

Operator's Manual



Oscillating Spindle SANDER

Model No.
351.215000



CAUTION: Read and follow all Safety Rules and Operating Instructions before First Use of this Product. Keep this manual with tool.

Sears, Roebuck and Co., Hoffman Estates, IL 60179 U.S.A.

www.sears.com/craftsman

25759.00 Draft (01/22/08)

SAFETY

ASSEMBLY

OPERATION

MAINTENANCE

PARTS LIST

ESPAÑOL

TABLE OF CONTENTS

Warranty	2
Safety Rules	2-3
Unpacking	3
Assembly	3-4
Installation	4-5
Operation	5-6
Maintenance	6
Troubleshooting	7
Parts Illustration and List	8-9
Español	12-19

WARRANTY

ONE-YEAR FULL WARRANTY ON CRAFTSMAN TOOL

If this Craftsman tool fails due to a defect in material or workmanship within one year from the date of purchase, call 1-800-4-MY-HOME® TO ARRANGE FOR FREE REPAIR (or replacement if repair proves impossible). This warranty does not include expendable parts, such as lamps, batteries, bits or blades.

If this tool is ever used for commercial or rental purposes, this warranty will apply for only 90 days from the date of purchase.

This warranty gives you specific legal rights and you may also have other rights which vary from state to state.

Sears, Roebuck and Co., Hoffman Estates, IL 60179

SAFETY RULES

WARNING: For your own safety, read all of the instructions and precautions before operating tool.

WARNING: Some dust created by power sanding, sawing, grinding, drilling and other construction activities contains chemicals known to cause cancer, birth defects or other reproductive harm.

Some examples of these chemicals are:

- Lead from lead-based paints.
- Crystalline silica from bricks and cement and other masonry products.
- Arsenic and chromium from chemically-treated lumber.

Your risk from these exposures vary, depending on how often you do this type of work. To reduce your exposure to these chemicals: work in a well ventilated area and work with approved safety equipment. Always wear **OSHA/NIOSH** approved, properly fitting face mask or respirator when using such tools.

CAUTION: Always follow proper operating procedures as defined in this manual even if you are familiar with use of this or similar tools. Remember that being careless for even a fraction of a second can result in severe personal injury.

BE PREPARED FOR JOB

- Wear proper apparel. Do not wear loose clothing, gloves, neckties, rings, bracelets or other jewelry which may get caught in moving parts of machine.
- Wear protective hair covering to contain long hair.
- Wear safety shoes with non-slip soles.

- Wear safety glasses complying with United States ANSI Z87.1. Everyday glasses have only impact resistant lenses. They are **NOT** safety glasses.
- Wear face mask or dust mask if operation is dusty.
- Be alert and think clearly. Never operate power tools when tired, intoxicated or when taking medications that cause drowsiness.

PREPARE WORK AREA FOR JOB

- Keep work area clean. Cluttered work areas invite accidents.
- Do not use power tools in dangerous environments. Do not use power tools in damp or wet locations. Do not expose power tools to rain.
- Work area should be properly lighted.
- Proper electrical receptacle should be available for tool. Three-prong plug should be plugged directly into properly grounded, three-prong receptacle.
- Extension cords should have a grounding prong and the three wires of the extension cord should be of the correct gauge.
- Keep visitors at a safe distance from work area.
- Keep children out of workplace. Make workshop childproof. Use padlocks, master switches or remove switch keys to prevent any unintentional use of power tools.

TOOL SHOULD BE MAINTAINED

- Always unplug tool prior to inspection.
- Consult manual for specific maintaining and adjusting procedures.
- Keep tool lubricated and clean for safest operation.
- Remove adjusting tools. Form habit of checking to see that adjusting tools are removed before switching machine on.
- Keep all parts in working order. Check to determine that the guard or other parts will operate properly and perform their intended function.
- Check for damaged parts. Check for alignment of moving parts, binding, breakage, mounting and any other condition that may affect a tool's operation.
- A guard or other part that is damaged should be properly repaired or replaced. Do not perform makeshift repairs. (Use parts list provided to order replacement parts.)

KNOW HOW TO USE TOOL

- Use right tool for job. Do not force tool or attachment to do a job for which it was not designed.
- Disconnect tool when changing sanding drum.
- Avoid accidental start-up. Make sure that the tool is in the "OFF" position before plugging in.
- Do not force tool. It will work most efficiently at the rate for which it was designed.
- Keep hands away from moving parts and sanding surfaces.
- Never leave tool running unattended. Turn the power off and do not leave tool until it comes to a complete stop.
- Do not overreach. Keep proper footing and balance.
- Never stand on tool. Serious injury could occur if tool is tipped or if belt or disc are unintentionally contacted.
- Know your tool. Learn the tool's operation, application and specific limitations.
- Use recommended accessories (refer to page 9). Use of improper accessories may cause risk of injury to persons.
- Handle the workpiece correctly. Protect hands from possible injury.

- Turn machine off if it jams.
- Support workpiece with work table.

CAUTION: Think safety! Safety is a combination of operator common sense and alertness at all times when tool is being used.

WARNING: Do not attempt to operate tool until it is completely assembled according to the instructions.

UNPACKING

Refer to Figure 1.

Check for shipping damage. If damage has occurred, a claim must be filled with carrier. Check for completeness. Immediately report missing parts to dealer.

The sander comes assembled as one unit. Additional parts should be located and accounted for before assembling.

- A Table Inserts (6), ($\frac{1}{2}$ " , $\frac{3}{4}$ " , 1" , 1 $\frac{1}{2}$ " , 2" and 3")
- B Spindle Knob
- C Drum Washers (5), ($\frac{3}{4}$ " , 1" , 1 $\frac{1}{2}$ " , 2" and 3")
- D Spindle Drums (5), ($\frac{3}{4}$ " , 1" , 1 $\frac{1}{2}$ " , 2" and 3")
- E Abrasive Sleeves (6), ($\frac{1}{2}$ " , $\frac{3}{4}$ " , 1" , 1 $\frac{1}{2}$ " , 2" and 3")

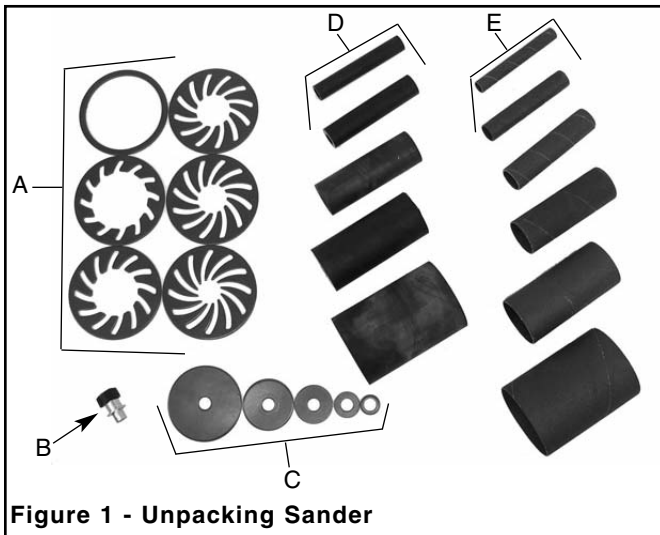


Figure 1 - Unpacking Sander

ASSEMBLY

Refer to Figures 2 - 5.

CAUTION: Do not attempt assembly if parts are missing. Use this manual to order replacement parts.

WARNING: Do not operate machine until completely assembled. Do not operate machine until you have completely read and understood this manual.

MOUNT SANDER

Refer to Figure 2.

Choose a suitable location to mount the sander. The sander must be installed in a place with ample lighting and correct power supply. To install sander:

- The sander must be bolted to a firm, level surface.
- Make sure there is plenty of room for moving the workpiece. There must be enough room that neither operators nor bystanders will have to stand in line with the wood while using the tool.

- Sander can be installed on a workbench or a tool stand (see Recommended Accessories, page 9) using bolts, lock washers and hex nuts.
- Figure 2 shows the base dimensions and mounting holes.

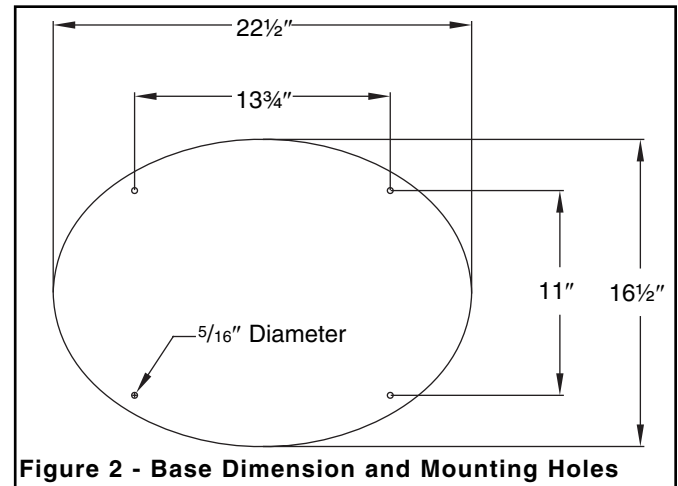


Figure 2 - Base Dimension and Mounting Holes

ATTACH ABRASIVE SLEEVES

Refer to Figures 3 and 4, pages 3 and 4.

TO ATTACH $\frac{1}{2}$ " ABRASIVE SLEEVE:

- Place the $\frac{1}{2}$ " table insert over spindle and onto the table. The top side of the insert has directional arrows stamped into the insert.
- Slide sleeve over the spindle.
- Secure sleeve in position with knob.

NOTE: Knob has left hand thread – turn counterclockwise to tighten, clockwise to loosen. Knob must seat on sleeve securely so that sleeve will not spin loose on spindle.

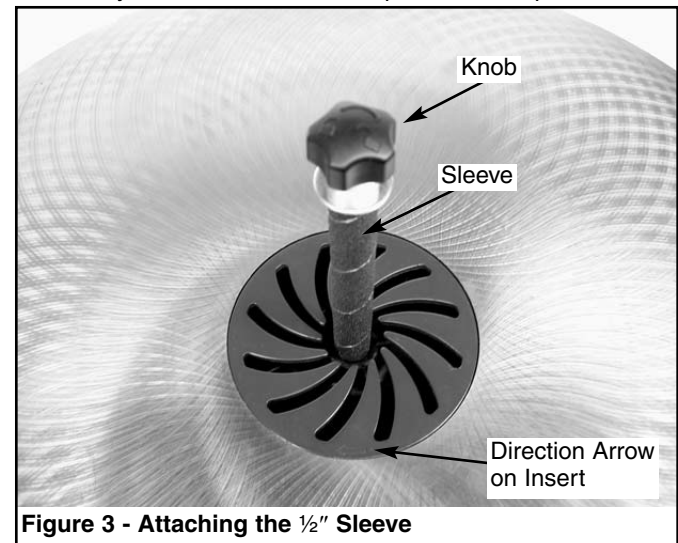


Figure 3 - Attaching the $\frac{1}{2}$ " Sleeve

TO ATTACH $\frac{3}{4}$ " – 3" ABRASIVE SLEEVES:

Example: 2"

- Place the 2" table insert over spindle and onto the table. The top side of the insert has directional arrows stamped into the insert.
- Slide 2" sleeve over the 2" drum.
- Slide drum with sleeve onto spindle. Place 2" drum washer on drum and secure drum in position with knob. Knob and washer must hold drum firmly so that it does not spin loose on spindle.

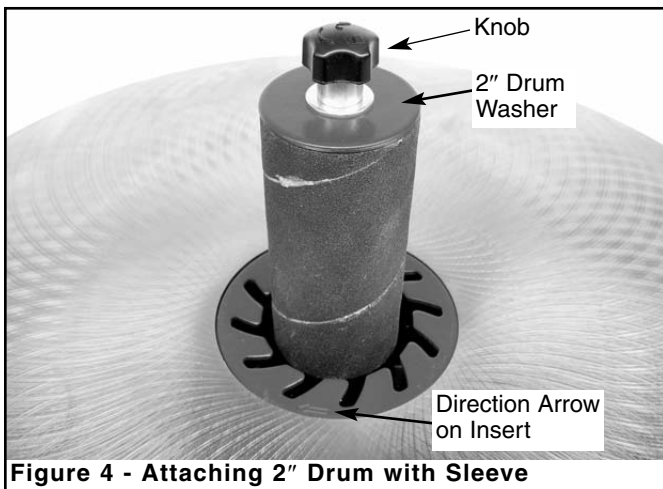


Figure 4 - Attaching 2" Drum with Sleeve

ONBOARD STORAGE

Onboard storage is provided for all drums, inserts and washers.

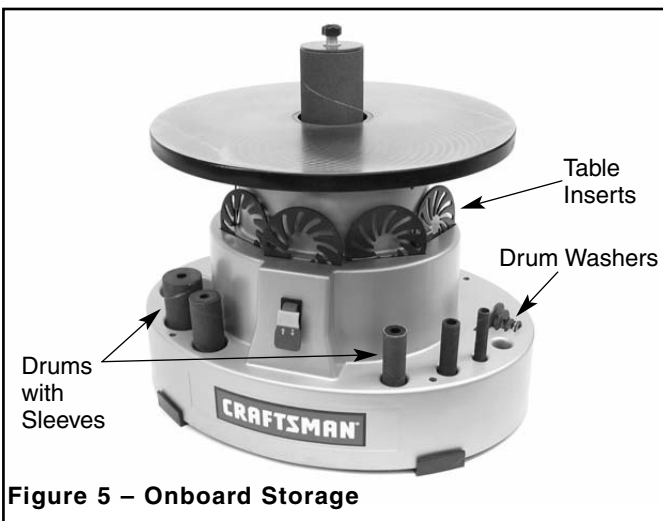


Figure 5 - Onboard Storage

INSTALLATION

Refer to Figures 6, 7 and 8, pages 4 and 5.

POWER SOURCE

WARNING: Do not connect sander to the power source until all assembly steps have been completed.

The motor is designed for operation on the voltage and frequency specified. Normal loads will be handled safely on voltages not more than 10% above or below specified voltage. Running the unit on voltages which are not within range may cause overheating and motor burn-out. Heavy loads require that voltage at motor terminals be no less than the voltage specified on nameplate.

- Power supply to the motor is controlled by a single pole locking rocker switch. Remove the key to prevent unauthorized use.

GROUNDING INSTRUCTIONS

WARNING: Improper connection of equipment grounding conductor can result in the risk of electrical shock. Equipment should be grounded while in use to protect operator from electrical shock.

- Check with a qualified electrician if grounding instructions are not understood or if in doubt as to whether the tool is properly grounded.
- This tool is equipped with an approved 3-conductor cord rated at 150V and a 3-prong grounding type plug (Figure 6) for your protection against shock hazards.
- Grounding plug should be plugged directly into a properly installed and grounded 3-prong grounding-type receptacle, as shown (Figure 6).

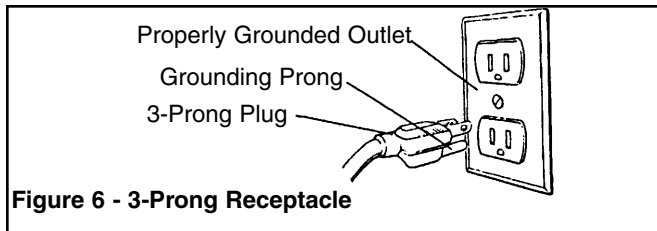


Figure 6 - 3-Prong Receptacle

- Do not remove or alter grounding prong in any manner. In the event of a malfunction or breakdown, grounding provides a path of least resistance for electrical shock.

WARNING: Do not permit fingers to touch the terminals of plug when installing or removing from outlet.

- Plug must be plugged into matching outlet that is properly installed and grounded in accordance with all local codes and ordinances. Do not modify plug provided. If it will not fit in outlet, have proper outlet installed by a qualified electrician.
- Inspect tool cords periodically, and if damaged, have repaired by an authorized service facility.
- Green (or green and yellow) conductor in cord is the grounding wire. If repair or replacement of the electric cord or plug is necessary, do not connect the green (or green and yellow) wire to a live terminal.
- Where a 2-prong wall receptacle is encountered, it must be replaced with a properly grounded 3-prong receptacle installed in accordance with National Electric Code and local codes and ordinances.

WARNING: This work should be performed by a qualified electrician.

A temporary 3-prong to 2-prong grounding adapter (see Figure 7) is available for connecting plugs to a two pole outlet if it is properly grounded.

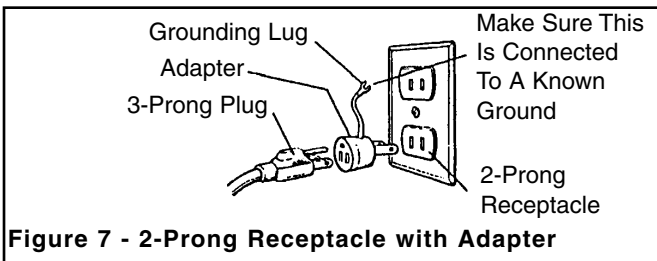


Figure 7 - 2-Prong Receptacle with Adapter

- Do not use a 3-prong to 2-prong grounding adapter unless permitted by local and national codes and ordinances.

(A 3-prong to 2-prong grounding adapter is not permitted in Canada.) Where permitted, the rigid green tab or terminal on the side of the adapter must be securely connected to a permanent electrical ground such as a properly grounded water pipe, a properly grounded outlet box or a properly grounded wire system.

- Many cover plate screws, water pipes and outlet boxes are not properly grounded. To ensure proper ground, grounding means must be tested by a qualified electrician.

EXTENSION CORDS

- The use of any extension cord will cause some drop in voltage and loss of power.
- Wires of the extension cord must be of sufficient size to carry the current and maintain adequate voltage.
- Use the table to determine the minimum wire size (A.W.G.) extension cord.
- Use only 3-wire extension cords having 3-prong grounding type plugs and 3-pole receptacles which accept the tool plug.
- If the extension cord is worn, cut, or damaged in any way, replace it immediately.

Extension Cord Length

Wire Size	A.W.G.
Up to 25 ft.	18
25 to 50 ft.	16

NOTE: Using extension cords over 50 ft. long is not recommended.

MOTOR

The sander is assembled with motor and wiring installed. The electrical wiring schematic is shown in Figure 8.

MOTOR SPECIFICATIONS:

Horsepower (Continuous Duty)	1/4
Voltage	120
Amp.	2.6
Hertz	60
Phase	Single
RPM	1725

ELECTRICAL CONNECTIONS

WARNING: All electrical connections must be performed by a qualified electrician. Make sure tool is off and disconnected from power source while motor is mounted, connected, reconnected or anytime wiring is inspected.

Motor and wires are installed as shown in wiring schematic (See Figure 8). Motor is assembled with approved, 3-conductor cord to be used at 120 volts.

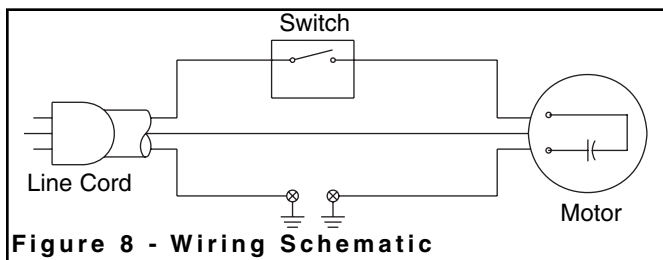


Figure 8 - Wiring Schematic

The power lines are inserted directly onto the switch. The green ground line must remain securely fastened to the frame to properly protect against electrical shock. The power supply to the motor is controlled by a single pole locking rocker switch.

- Remove the key to prevent unauthorized use.

OPERATION

Refer to Figures 9 and 10.

DESCRIPTION

The Craftsman Oscillating Spindle Sander makes sanding irregular shapes and curves in wood easy and convenient.

Sander features a large 18" cast iron table, dust port and onboard storage of drums, inserts and washers.

Six sizes of drums are included. Dust port is sized to fit Sears wet/dry vacuums.

SPECIFICATIONS

Spindle diameter	1/2"
Drum diameters	3/4", 1", 1 1/2", 2" and 3"
Drum length	4 1/2"
Spindle stroke	1"
Spindle oscillation	30 SPM
Spindle speed	1725 RPM
Table diameter	18"
Table height	14 1/2"
Dust port diameter	2.086"
Base dimensions	22 1/2 x 16 1/2"
Switch	SP, Locking rocker
Weight	52 lbs

WARNING: Operation of any power tool can result in foreign objects being thrown into the eyes, which can result in severe eye damage. Always wear safety goggles complying with United States ANSI Z87.1 (shown on package) before commencing power tool operation. Safety goggles are available at Sears retail stores or catalog.

CAUTION: Always observe following safety precautions.

SAFETY PRECAUTIONS

- Whenever adjusting or replacing any parts on the tool, turn switch OFF and remove the plug from power source.
- Make sure all guards are properly attached. All guards should be securely fastened.
- Make sure all moving parts are free and clear of any interference.
- Make sure all fasteners are tight and have not vibrated loose.
- With power disconnected, test operation by hand for clearance and adjust if necessary.
- Always wear eye protection or face shield.
- After turning switch on, always allow drum to come up to full speed before sanding.
- Be sure drum turns clockwise.
- Avoid kickback by sanding in accordance with the directional arrows.
- Keep your hands clear of abrasive sleeve and drum.
- For optimum performance, do not stall motor or reduce speed. Do not force the work into the abrasive.
- Always support workpiece with table.
- Never push a sharp corner of the workpiece rapidly against sleeve. Abrasive backing may tear.
- Replace abrasives when they become loaded (glazed) or frayed.
- Never use machine for wet sanding which can create hazard of electrical shock.

ON/OFF SWITCH

Refer to Figure 9, page 6.

The ON/OFF switch is located on the upper front right of the base. To turn the sander ON, pull the switch to the up position. To turn the sander OFF, push the switch to the down position.

The sander can be locked from unauthorized use by locking the switch. To lock the switch:

- Turn the switch to OFF position and disconnect sander from power source.
- Pull the key out. The switch cannot be turned on with the key removed.

NOTE: Should the key be removed from the switch at the ON position, the switch can be turned off but cannot be turned on again.

- To replace key, slide key into the slot on switch until it snaps.



Figure 9 – Locking Switch in OFF Position

BASIC SANDING OPERATION

NOTE: This tool is approved for sanding wood and wood products only.

- Select and install the desired sanding sleeve and drum for the particular application. Choose the size that is similar to the contour of your workpiece.

WARNING: Failure to use the correct size table insert with its matching sanding sleeve could result in fingers being pinched or the workpiece being pulled down between the table insert and sanding sleeve.

In general, coarse grit removes the most material and fine grit produces a better finish.

For best results, start with a coarse grit and sand until the surface is uniform. Medium grit may then be used to remove scratches left by the coarser grit and finer grit used for finishing of the surface. Always continue sanding with each grit until surface is uniform.

DUST COLLECTION

Refer to Figure 10.

A dust collection port has been provided; it is located beneath the work table on the rear side of the sander. The dust port is sized to fit the vacuum hose of Craftsman wet/dry vacuums.

The use of dust collection is highly recommended. Sawdust buildup beneath the table may prevent the spindle from oscillating completely, causing damage to the tool.

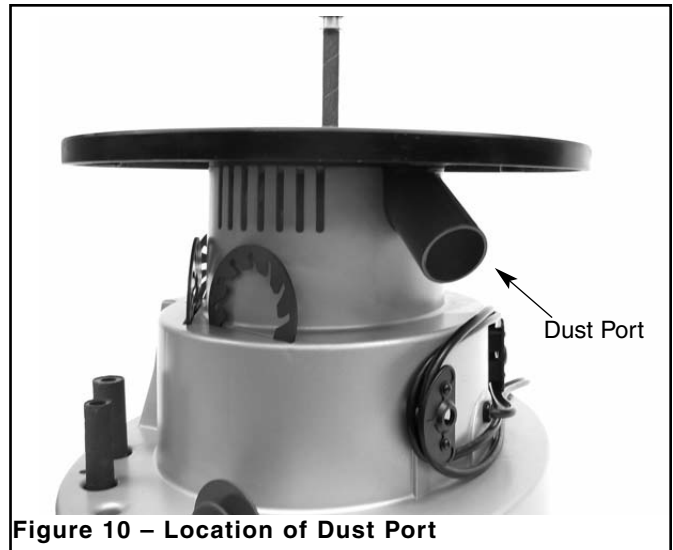


Figure 10 – Location of Dust Port

MAINTENANCE

WARNING: Make certain that the unit is disconnected from power source before attempting to service or remove any component.

CLEANING

Keep machine and workshop clean. Do not allow sawdust to accumulate on the tool. Keep the drums clean.

Be certain motor is kept clean and is frequently vacuumed free of dust.

Use soap and water to clean painted parts, rubber parts and plastic guards.

LUBRICATION

Refer to Figure 11.

The shielded ball bearings in this tool are permanently lubricated at the factory. They require no further lubrication.

- Apply a light coat of paste wax to the work table. This will make it easier to feed the work and also prevent rust.
- Periodically apply grease to the worm gear (Ref. No. 54).

KEEP TOOL IN REPAIR

- If power cord is worn, cut, or damaged in any way, have it replaced immediately.
- Replace worn abrasives when needed.
- Replace any damaged or missing parts. Use parts list to order parts.

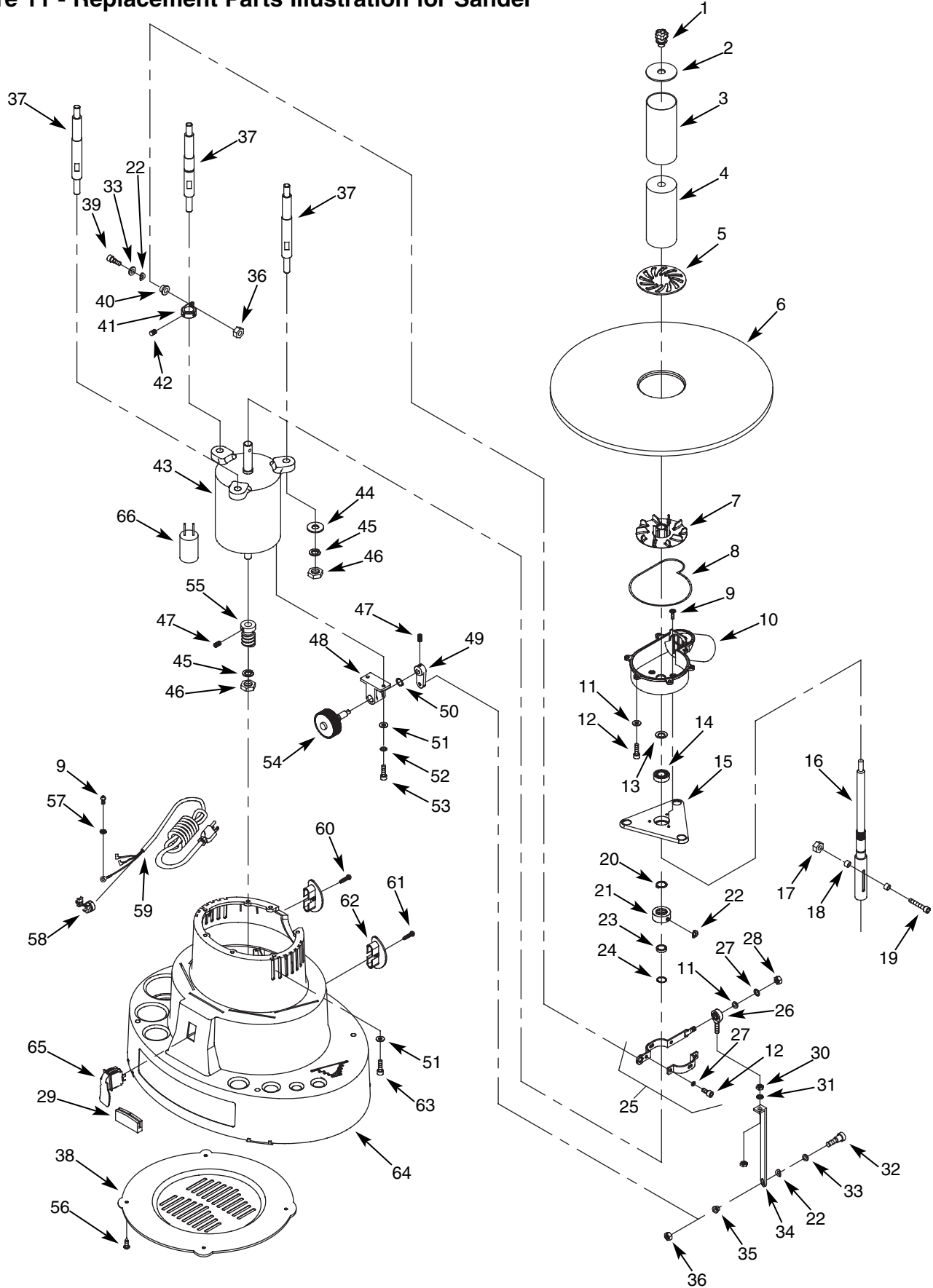
Any attempt to repair motor may create a hazard unless repair is done by a qualified service technician. Repair service is available at your nearest Sears store.

TROUBLESHOOTING

SYMPTOM	POSSIBLE CAUSE(S)	CORRECTIVE ACTION
Motor will not start	<ol style="list-style-type: none"> 1. Low voltage 2. Open circuit in motor or loose connections 3. Defective switch 4. Defective capacitor 	<ol style="list-style-type: none"> 1. Check power line for proper voltage 2. Inspect all lead connections on motor for loose or open connection 3. Replace switch 4. Replace capacitor
Motor will not start; fuses blown or circuit breakers are tripped	<ol style="list-style-type: none"> 1. Short circuit in line cord or plug 2. Short circuit in motor or loose connections 3. Incorrect fuses or circuit breakers in power line 	<ol style="list-style-type: none"> 1. Inspect line cord or plug for damaged insulation and shorted wires 2. Inspect all lead connections on motor for loose or shorted terminals or worn insulation on wires 3. Install correct fuses or circuit breakers
Motor fails to develop full power (power output of motor decreases rapidly with decrease in voltage at motor terminals)	<ol style="list-style-type: none"> 1. Power line overloaded with lights, appliances and other motors 2. Undersize wires or circuits too long 3. General overloading of power company's facilities 	<ol style="list-style-type: none"> 1. Reduce the load on the power line 2. Increase wire sizes, or reduce length of wiring 3. Request a voltage check from the power company
Motor overheats	Motor overloaded	Reduce load on motor
Motor stalls (resulting in blown fuses or tripped circuit breakers)	<ol style="list-style-type: none"> 1. Short circuit in motor or loose connections 2. Low voltage 3. Incorrect fuses or circuit breakers in power line 4. Motor overload 	<ol style="list-style-type: none"> 1. Inspect connections in motor for loose or shorted terminals or worn insulation on lead wires 2. Correct the low line voltage conditions 3. Install correct fuses or circuit breakers 4. Reduce load on motor
Machine slows down while operating or sandpaper slips on drum	<ol style="list-style-type: none"> 1. Applying too much pressure to workpiece 2. Spindle knob loose 	<ol style="list-style-type: none"> 1. Ease up on pressure 2. Tighten spindle knob
Wood burns while sanding; sandpaper not removing wood	Sandpaper glazed or loaded with sawdust	Replace sandpaper
Spindle does NOT travel completely through 1" stroke	<ol style="list-style-type: none"> 1. Sawdust build-up below table insert 2. Damaged or loose oscillating mechanism 	<ol style="list-style-type: none"> 1. Remove sawdust with vacuum 2. Inspect mechanism. Contact Sears Service Center if necessary
Excessive noise Note: Normally operating sander does make some noise	Spindle and motor not aligned properly	Adjust motor and spindle alignment

Model 351.215000

Figure 11 - Replacement Parts Illustration for Sander



REPLACEMENT PARTS LIST FOR SANDER

KEY NO.	PART NO.	DESCRIPTION	QTY.
1	26019.00	Knob	1
2	26020.00	Drum Washer (set of 5: ¾", 1", 1½", 2", 3")	1
3	26021.00	Abrasive Sleeve (set of 6: ½", ¾", 1", 1½", 2", 3")	1
4	26022.00	Rubber Drum (set of 5: ¾", 1", 1½", 2", 3")	1
5	26023.00	Table Inserts (set of 6: ½", ¾", 1", 1½", 2", 3")	1
6	N/A	Table	1
7	26024.00	Fan	1
8	26025.00	Gasket	1
9	02614.00	5-0.8 x 10mm Flat Head Screw	3
10	26026.00	Fan Housing	1
11	STD851005	5mm Flat Washer*	6
12	STD870512	5-0.8 x 12mm Socket Head Bolt*	6
13	26027.00	Seal	1
14	STD315535	6003ZZ Ball Bearing*	1
15	26028.00	Bearing Retainer	1
16	26029.00	Spindle	1
17	STD843508	5-0.8mm Fiber Hex Nut*	1
18	26030.00	Bushing (set of 2)	1
19	STD870540	5-0.8 x 40mm Socket Head Bolt*	1
20	00341.00	3AMI-17 Retaining Ring	1
21	26031.00	Collar	1
22	03826.00	8mm Wavy Washer	3
23	26032.00	61903ZZ Ball Bearing	1
24	01465.00	3AMI-30 Retaining Ring	1
25	26033.00	Bracket Assembly	1
26	26034.00	Rod End	1
27	STD852005	5mm Lock Washer*	1
28	STD840508	5-0.8mm Hex Nut*	1
29	26053.00	Foot	4
30	STD840812	8-1.25mm Hex Nut*	2
31	STD852008	8mm Lock Washer*	1
32	26036.00	Shoulder Screw	1
33	STD851008	8mm Flat Washer*	2

* Standard hardware item available locally

Δ Not shown

KEY NO.	PART NO.	DESCRIPTION	QTY.
34	26037.00	Link	1
35	26038.00	Bushing	1
36	STD843610	6-1.0mm Fiber Hex Nut*	2
37	26039.00	Motor Stud (set of 3)	1
38	26054.00	Base Cover	1
39	26041.00	Screw	1
40	26042.00	Bushing	1
41	26043.00	Pivot	1
42	01043.00	6-1.0 x 8mm Set Screw	2
43	26044.00	Motor	1
44	STD851010	10mm Flat Washer*	3
45	STD852010	10mm Lock Washer*	4
46	STD841015	10-1.5mm Hex Nut*	4
47	01516.00	5-0.8 x 8mm Set Screw	2
48	26045.00	Block	1
49	26046.00	Cam	1
50	00533.00	3AMI-15 Retaining Ring	1
51	STD851006	6mm Flat Washer*	9
52	STD852006	6mm Lock Washer*	2
53	STD870616	6-1.0 x 16mm Socket Head Bolt*	2
54	26047.00	Worm Gear	1
55	26048.00	Worm	1
56	22897.00	4.2-1.6 x 9.5mm Thread Forming Round Head Screw	4
57	01474.00	5mm Serrated Washer	1
58	20747.00	Strain Relief	1
59	26049.00	Line Cord	1
60	26050.00	4.8-1.6 x 32mm Thread Forming Round Head Screw	3
61	26051.00	4.8-1.6 x 25mm Thread Forming Round Head Screw	1
62	26052.00	Cord Wrap	2
63	STD870612	6-1.0 x 12mm Socket Head Bolt*	7
64	N/A	Base	1
65	26035.00	Switch	1
66	26040.00	Capacitor	1
Δ	25759.00	Operator's Manual	1

Recommended Accessories

Δ	¾" Abrasive Sleeves, 3 pc. (50, 80, & 120 grit)	9-24137
Δ	1" Abrasive Sleeves, 3 pc. (50, 80, & 120 grit)	9-24138
Δ	1½" Abrasive Sleeves, 3 pc. (50, 80, & 120 grit)	9-24139
Δ	2" Abrasive Sleeves, 3 pc. (50, 80, & 120 grit)	9-24140
Δ	3" Abrasive Sleeves, 3 pc. (50, 80, & 120 grit)	9-24142

Service Record

Craftsman Oscillating Spindle Sander

DATE	MAINTENANCE PERFORMED	REPLACEMENT PARTS REQUIRED

NOTES

Get it fixed, at your home or ours!

Your Home

For expert troubleshooting and home solutions advice:

manage  home

www.managemyhome.com

For repair – **in your home** – of **all** major brand appliances, lawn and garden equipment, or heating and cooling systems, **no matter who made it, no matter who sold it!**

For the replacement parts, accessories and owner's manuals that you need to do-it-yourself.

For Sears professional installation of home appliances and items like garage door openers and water heaters.

1-800-4-MY-HOME[®] (1-800-469-4663)

Call anytime, day or night (U.S.A. and Canada)

www.sears.com www.sears.ca

Our Home

For repair of carry-in items like vacuums, lawn equipment, and electronics, call anytime for the location of your nearest

Sears Parts & Repair Service Center

1-800-488-1222 (U.S.A.)

www.sears.com

1-800-469-4663 (Canada)

www.sears.ca

To purchase a protection agreement on a product serviced by Sears:

1-800-827-6655 (U.S.A.)

1-800-361-6665 (Canada)

Para pedir servicio de reparación a domicilio, y para ordenar piezas:

1-888-SU-HOGAR[®]

(1-888-784-6427)

Au Canada pour service en français:

1-800-LE-FOYER^{MC}

(1-800-533-6937)

www.sears.ca



© Registered Trademark / TM Trademark / SM Service Mark of Sears Brands, LLC

© Marca Registrada / TM Marca de Fábrica / SM Marca de Servicio de Sears Brands, LLC

^{MC} Marque de commerce / ^{MD} Marque déposée de Sears Brands, LLC

© Sears Brands, LLC

Free Manuals Download Website

<http://myh66.com>

<http://usermanuals.us>

<http://www.somanuals.com>

<http://www.4manuals.cc>

<http://www.manual-lib.com>

<http://www.404manual.com>

<http://www.luxmanual.com>

<http://aubethermostatmanual.com>

Golf course search by state

<http://golfingnear.com>

Email search by domain

<http://emailbydomain.com>

Auto manuals search

<http://auto.somanuals.com>

TV manuals search

<http://tv.somanuals.com>