

CRATE

BFX25 BFX50

BASS AMPLIFIER

WITH
DIGITAL SIGNAL
PROCESSING



OWNER'S MANUAL

Congratulations!

You are now the proud owner of the compact but powerful Crate BFX25/50 Bass Amplifier with Digital Signal Processing. This offers you a wide selection of digital effects designed especially for the bass guitar, each of which are easily accessed with a simple turn of a control knob. (No programmers degree required!) A four-band rotary EQ combined with Crate's variable Contour gives you complete control over a wide variety of sounds. In addition, the front panel headphone and extension speaker jacks make this amplifier equally suited for private practicing as well as performing in intimate surroundings.

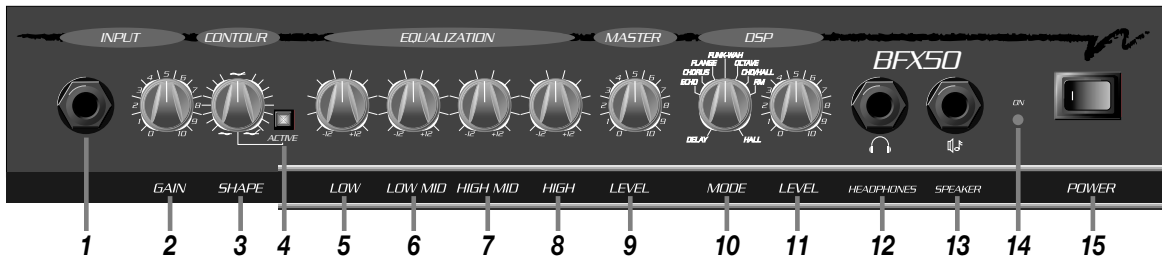
Like all Crate products, your BFX25/50 is designed by musicians and built using only the best components. Extensive testing at the hands (and ears) of skilled technicians and musicians insures you that this amplifier is the absolute best it can be.

In order to get the most out of your new bass amp, we recommend that you read this manual before you begin playing.

And ***thank you*** for choosing **CRATE**[®]

CRATE

BFX25/50 Bass Amplifier



The Front Panel:

1. INPUT: The signal output from an instrument (active or passive) or a line level signal may be connected here by means of a shielded instrument cable.

2. GAIN: This serves as the input signal level control for the amplifier, allowing you to set the amplifier for the best signal to noise ratio.

3. CONTOUR SHAPE: This control is only active when the Contour Active switch (#4) is depressed. The setting of this control shifts the frequency where the contour effect is centered, giving you a wide variety of tonal variations, from a studio "V"-shaped tone to a more "live", more present sound.

4. CONTOUR ACTIVE: This switch, when depressed, activates the Contour Shape control (#3).

5. LOW: This is the low frequency control which allows for a 19dB range of cut or boost at 60Hz.

6. LOW MID: This is the lower-midrange frequency control which allows for a 25dB range of cut or boost at 200Hz.

7. HIGH MID: This is the upper-midrange frequency control which allows for a 19dB range of cut or boost at 1kHz.

8. HIGH: This is the high frequency control which allows for a 38dB range of cut or boost at 10kHz.

9. MASTER LEVEL: This is the overall output level control for the amplifier.

10. DSP MODE: Select the type of digital effect(s) applied to the signal with this control. Each effect and its central location is called out by the markings around the control. The effects are described as follows:

- DELAY:** Slapback delay effect
- ECHO:** Long delay effect with regeneration
- CHORUS:** Chorus effect
- FLANGE:** Light flange effect

FUNK-WAH: Touch-sensitive wah-wah ("T-Wah") effect

OCTAVE: Adds secondary note one octave lower than original note

CHO/HALL: Chorus effect with large hall reverb effect

RM: Small room reverb effect

HALL: Large hall reverb effect

11. DSP LEVEL: This is the output level control for the selected DSP effect(s). For a dry signal (no effect), rotate the control full counter-clockwise. Rotating the control clockwise increases the magnitude of the DSP effect(s) applied to the signal.

12. HEADPHONES: For private listening, connect a pair of stereo headphones into this jack. The internal speaker is disconnected when headphones are plugged in. This jack may also be used to tap a line level signal from the amplifier, for connecting to a recording console, house sound board, amplifier, etc. (Remember that using this jack disconnects the internal speaker.)

13. SPEAKER: Use this jack to connect the amplifier to an external speaker cabinet with a minimum impedance rating of 4 ohms for the BFX25 and 8 ohms for the BFX50. The internal speaker is disconnected when this jack is used.

14. ON LED: This LED will illuminate when the amplifier is turned on.

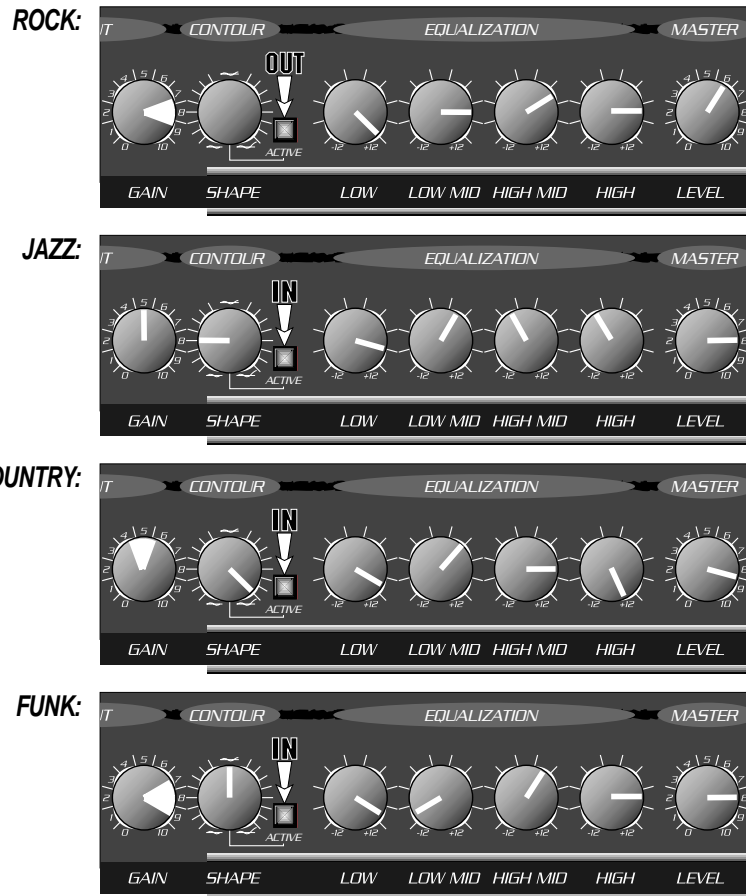
15. POWER: This switch applies AC power to the amplifier. The amplifier is ON when the side of the switch with the indicator ("I") is depressed.

16. AC LINE CORD (rear panel, not shown): Plug this cord into a properly wired, grounded, 120 volt, 60 cycle AC outlet. **DO NOT attempt to defeat the ground connection of this power cord!** If your amplifier was purchased outside of the United States, see the unit's rear panel labeling for its power rating, and follow the above guidelines.

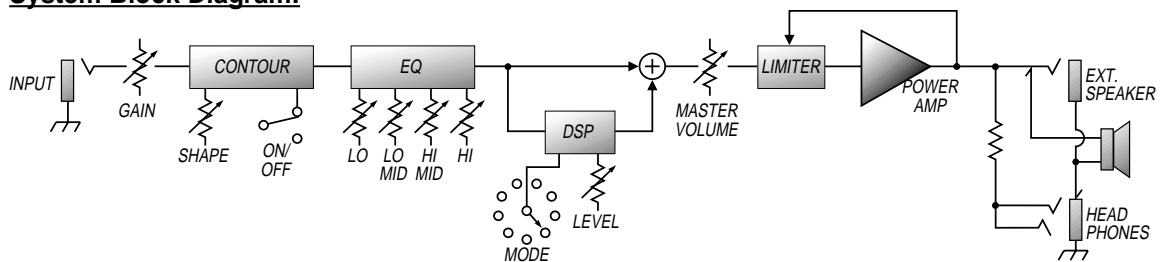
CRATE

BFX25/50 Bass Amplifier

Suggested Starting Tone Settings:



System Block Diagram:








CRATE BFX25/50 Bass Amplifier

BFX25/50 TECHNICAL SPECIFICATIONS:

	BFX25	BFX50
Output Power Rating	25W RMS 1%THD, 4Ω, 20Vrms	50W RMS 1%THD, 8Ω 20Vrms
Gain	42dB, tones at "5" @ 1kHz	48dB, tones at "5" @ 1kHz
Tone Range	Low 19dB range @ 60Hz Low Mid 25dB range @ 200Hz High Mid 19dB range @ 1kHz High 38dB range @ 10kHz	19dB range @ 60Hz 25dB range @ 200Hz 19dB range @ 1kHz 38dB range @ 10kHz
Signal to Noise Ratio	75dB	75dB
Input Impedance	220k ohms	220k ohm
Maximum Signal Accepted	15 volts, peak-to-peak	15 volts, peak-to-peak
Power Requirements	110VAC, 60Hz, 45VA 100/110VAC, 50/60Hz, 45VA 230VAC, 50/60Hz, 45VA	110VAC, 60Hz, 85VA 100/110VAC, 50/60Hz, 85VA 230VAC, 50/60Hz, 85VA
Internal Speaker	Size 10" Type Crate Custom Magnet 30 oz Voice Coil 1.0" RMS Rating 30 watts Impedance 4 ohms	12" Crate Custom 30 oz 1.5" 50 watts 8 ohms
Size	17" H x 15.75" W x 12" D	20.62" H x 17" W x 13.5" D
Weight	39 lbs (17.7kg)	47 lbs (21.3kg)

Specifications subject to change without notice.

 CAUTION RISK OF ELECTRIC SHOCK DO NOT OPEN	 PRECAUCION RIESGO DE CORRIENTAZO NO ABRA	 ATTENTION RISQUE D'ELECTROCUTION NE PAS OUVRI
WARNING: TO REDUCE THE RISK OF FIRE OR ELECTRIC SHOCK, DO NOT EXPOSE THIS APPARATUS TO RAIN OR MOISTURE. TO REDUCE THE RISK OF ELECTRIC SHOCK, DO NOT REMOVE COVER. NO USER-SERVICEABLE PARTS INSIDE. REFER SERVICING TO QUALIFIED SERVICE PERSONNEL.	PRECAUCION: PARA REDUCIR EL RIESGO DE INCENDIOS O DESCARGAS ELECTRICAS, NO PERMITA QUE ESTE APARATO QUEDE EXPUESTO A LA LLUVIA O LA HUMEDAD. PARA DISMINUIR EL RIESGO DE CORRIENTAZO, NO ABRA LA CUBIERTA. NO HAY PIEZAS ADEENTRO QUE EL USUARIO PUEDE REPARAR DEJE TODO MANTENIMIENTO A LOS TECNICOS CALIFICADOS.	ATTENTION: PROTÉGEZ CET APPAREIL DE LA PLUIE ET DE L'HUMIDITÉ AFIN D'ÉVITER TOUT RISQUE D'INCENDIE OU D'ÉLECTROCUTION. POUR RÉDUIRE D'ÉLECTROCUTION NE PAS ENLEVER LE COUVERCLE. AUCUNE PIÈCE INTERNE N'EST RÉPARABLE PAR L'UTILISATEUR. POUR TOUTE RÉPARATION, S'ADRESSER À UN TECHNICIEN QUALIFIÉ.
IMPORTANT SAFETY INSTRUCTIONS		
<ul style="list-style-type: none"> • READ, FOLLOW, HEED, AND KEEP ALL INSTRUCTIONS AND WARNINGS. • DO NOT OPERATE NEAR ANY HEAT SOURCE AND DO NOT BLOCK ANY VENTILATION OPENINGS ON THIS APPARATUS. FOR PROPER OPERATION, THIS UNIT REQUIRES 3" (75mm) OF WELL VENTILATED SPACE AROUND HEATSINKS AND OTHER AIR FLOW PROVISIONS IN THE CABINET. • DO NOT USE THIS APPARATUS NEAR SPLASHING, FALLING, SPRAYING, OR STANDING LIQUIDS. • CLEAN ONLY WITH LINT-FREE DAMP CLOTH AND DO NOT USE CLEANING AGENTS. • ONLY CONNECT POWER CORD TO A POLARIZED, SAFETY GROUNDED OUTLET WIRED TO CURRENT ELECTRICAL CODES AND COMPATIBLE WITH VOLTAGE, POWER, AND FREQUENCY REQUIREMENTS STATED ON THE REAR PANEL OF THE APPARATUS. • PROTECT THE POWER CORD FROM DAMAGE DUE TO BEING WALKED ON, PINCHED, OR STRAINED. • UNPLUG THE APPARATUS DURING LIGHTNING STORMS OR WHEN UNUSED FOR LONG PERIODS OF TIME. • ONLY USE ATTACHMENTS, ACCESSORIES, STANDS, OR BRACKETS SPECIFIED BY THE MANUFACTURER FOR SAFE OPERATION AND TO AVOID INJURY. • THIS APPARATUS DOES NOT OPERATE NORMALLY AND REQUIRES SERVICE WITH ANY PHYSICAL DAMAGE FROM IMPACT OR ANY EXPOSURE TO MOISTURE. • SERVICE MUST BE PERFORMED BY QUALIFIED PERSONNEL. • OUR AMPLIFIERS ARE CAPABLE OF PRODUCING HIGH SOUND PRESSURE LEVELS. CONTINUED EXPOSURE TO HIGH SOUND PRESSURE LEVELS CAN CAUSE PERMANENT HEARING IMPAIRMENT OR LOSS. USER CAUTION IS ADVISED AND EAR PROTECTION IS RECOMMENDED IF UNIT IS OPERATED AT HIGH VOLUME. 		
EXPLANATION OF GRAPHICAL SYMBOLS: EXPLICACION DE SIMBOLOS GRAFICOS: EXPLICATION DES SYMBOLES GRAPHIQUES:	 = "DANGEROUS VOLTAGE" "VOLTAJE PELIGROSO" "DANGER HAUTE TENSION"	 = "IT IS NECESSARY FOR THE USER TO REFER TO THE INSTRUCTION MANUAL" "ES NECESARIO QUE EL USUARIO SE REFIERA AL MANUAL DE INSTRUCCIONES." "REFERREZ-VOUS AU MANUAL D'UTILISATION"

The BFX25/50 is covered with a durable black Tolex material: wipe it clean with a lint-free cloth. Never spray cleaning agents onto the cabinet. Avoid abrasive cleansers which would damage the finish.

CRATE
www.crateamps.com



©2001 SLM ELECTRONICS, A DIVISION OF ST. LOUIS MUSIC, 1400 FERGUSON, ST. LOUIS, MO. 63133
P/N 47-356-01 • 07/01

Free Manuals Download Website

<http://myh66.com>

<http://usermanuals.us>

<http://www.somanuals.com>

<http://www.4manuals.cc>

<http://www.manual-lib.com>

<http://www.404manual.com>

<http://www.luxmanual.com>

<http://aubethermostatmanual.com>

Golf course search by state

<http://golfingnear.com>

Email search by domain

<http://emailbydomain.com>

Auto manuals search

<http://auto.somanuals.com>

TV manuals search

<http://tv.somanuals.com>