

CREATIVE

WEBCAM

NX Pro

User's Guide

User's Guide

Creative WebCam NX Pro

Information in this document is subject to change without notice and does not represent a commitment on the part of Creative Technology Ltd. No part of this manual may be reproduced or transmitted in any form or by any means, electronic or mechanical, including photocopying and recording, for any purpose without the written permission of Creative Technology Ltd. The software described in this document is furnished under a license agreement and may be used or copied only in accordance with the terms of the license agreement. It is against the law to copy the software on any other medium except as specifically allowed in the license agreement. The licensee may make one copy of the software for backup purposes.

Copyright © 1998-2003 Creative Technology Ltd. All rights reserved.

Version 1.0

April 2003

© Copyright 2003, Creative Technology Ltd. All Rights Reserved. The Creative logo, Sound Blaster and Blaster are registered trademark of Creative Technology Ltd. in the United States and/or other countries. Microsoft, MS-DOS, and Windows are registered trademarks of Micosoft Corporation. All other brand and product names listed are trademarks or registered trademarks of their respective holders.

CREATIVE



Contents

Contents

Introduction	
Before You Begin.....	i
Package Contents.....	i
README file.....	i
Minimum System Requirements.....	i
Technical Support and Warranty.....	ii
Product Registration.....	ii
Document Conventions.....	iii
1	Installing Creative WebCam NX Pro
About Creative WebCam NX Pro.....	1-1
Installing Creative WebCam NX Pro.....	1-2
In Windows 98/98SE /Me/2000/ XP.....	1-2
2	Using PC-CAM Center
Starting PC-CAM Center.....	2-1
Capturing Images and Video.....	2-2
Taking a Photo.....	2-2
Recording a Video.....	2-2
Viewing a Photo.....	2-3
Viewing a Video.....	2-3
Reactivating the Camera.....	2-3
Starting PC-CAM Center Help.....	2-4
3	Creative WebCam NX Pro Applications
Creative PC-CAM Center.....	3-1
Creative WebCam Monitor.....	3-1
Microsoft NetMeeting.....	3-1
Microsoft Internet Explorer.....	3-1



NX Pro

A	Technical Specifications	
B	Troubleshooting	
	Problems Using Creative WebCam NX Pro.....	B-1
	Problems in Windows XP	B-2
C	Note on USB Compatibility	

CREATIVE



Introduction

Introduction



Applications included on your Installation CD may vary depending on camera model and region of purchase.

Creative WebCam NX Pro is a digital video camera kit that gives you everything you need to capture 24-bit still images and video in 16.7 million colors. Not only that, it also allows you to communicate face-to-face with others on the Internet!

Creative WebCam NX Pro comes with the following software:

- Creative PC-CAM Center
- Creative WebCam Monitor
- Microsoft® NetMeeting
- Microsoft Internet Explorer

For more information, see "Creative WebCam NX Pro Applications" on page 3-1.

Before You Begin

Package Contents

Your Creative WebCam NX Pro package contains the following items:

- Creative WebCam NX Pro with USB cable attached
- Creative WebCam NX Pro installation CD
- Quick Start booklet

README file

The README file on the CD-ROM contains information not available at the time of printing. Read the file before you begin installing Creative WebCam NX Pro.

Minimum System Requirements

- 233 MHz Pentium® II or higher IBM® compatible PC
- 32 MB RAM
- 250 MB free hard disk space
- Available USB port or a USB hub with external power supply
- Microsoft Windows® 98/98SE, Windows Me, Windows 2000 or Windows XP
- 16-bit color display at a resolution of 1024 x 768 pixels
- CD-ROM drive installed

- Sound Blaster® or other Windows-compatible audio card. Sound Blaster 16 or higher required for simultaneous two-way conversation with full-duplex support.

For Videoconferencing

- Microphone
- Modem or LAN access to the Internet at 28.8Kbps or faster

**Technical Support and
Warranty**

For Technical Support information, go to **Start -> Programs -> Creative -> Technical Support**.

This information can also be found in the Installation CD. Go to **d:\Support\<language>\Support.pdf**.

For warranty information, go to **d:\Warranty\<region>\<language>\Warranty.pdf** (replace d:\ with the drive letter of your CD-ROM drive, <region> with the region you are in, and <language> with the language the document is in). Please keep your Proof of Purchase for the duration of the Warranty period.

Product Registration

Enjoy a host of benefits by registering your products during installation, or at www.creative.com/register.

Benefits include:

- Service and Product Support from Creative
- Exclusive updates on promotions and events!

Document Conventions



Tip. This tells you about short cuts or hints relating to a feature.



Note. This highlights additional or important information about a feature.



Caution! This highlights proper usage of your product. Use this information to avoid risky situations.



Warning! This warns you of possible hazards to yourself or your product, that may result in injury or damage.

CREATIVE



1

Installing Creative WebCam NX Pro

Installing Creative WebCam NX Pro

This chapter tells you how to quickly install Creative WebCam NX Pro.

About Creative WebCam NX Pro

Figure 1-1 highlights the features of Creative WebCam NX Pro.

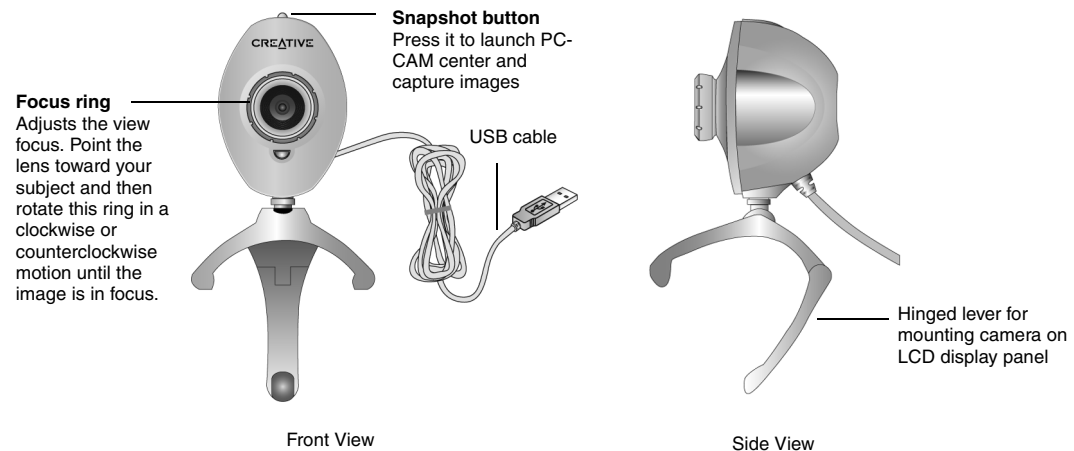


Figure 1-1: Creative WebCam NX Pro

Installing Creative WebCam NX Pro

Follow the installation procedures for your operating system.

In Windows 98/98SE / Me/2000/ XP



- You can install the WebCam with your computer turned on.
- The USB port(s) on your computer may be found on the front panel and/or the back panel.
- You can attach the WebCam to a USB hub with an external power supply.

1. Do not connect Creative WebCam NX Pro to your computer before installing the drivers. If you accidentally begin installation with Creative WebCam NX Pro connected, the **Add New Hardware Wizard** or **Found New Hardware Wizard** dialog box appears. Click the **Cancel** button.
2. Insert the Creative WebCam NX Pro Installation CD into your CD-ROM drive. If it does not run automatically, click **Start -> Run** and type **d:\ctrun\ctrun.exe** (replace d:\ with the drive letter of your CD-ROM drive).
3. Click the options for installing drivers and applications.
4. Follow the instructions on the screen to complete the installation. You may be asked, after an application is installed, if you want to restart your computer. Select **No** until all the drivers and applications are installed.



If you have a microphone, plug it into your computer's microphone connector. For further information, please read the documentation for your microphone connector.

5. Place your Creative WebCam NX Pro on top of your computer monitor or other flat surface. For LCD flat panel monitors or notebook computers, use the integrated hinged lever to balance the camera. See Figure 1-2.

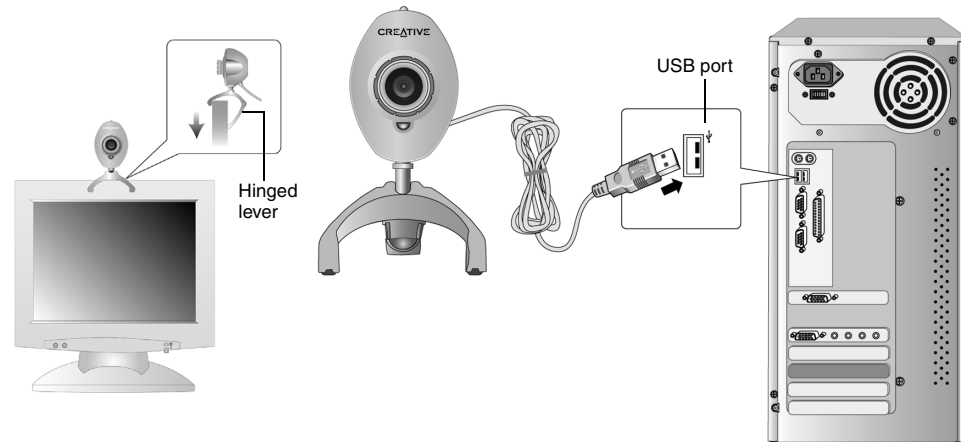


Figure 1-2: Connecting Creative WebCam NX Pro to your computer

For Windows 98/98SE and Windows Me only

1. Connect the Creative WebCam NX Pro's USB cable to an available USB port on your computer (Figure 1-2). Windows automatically detects the device.
 - i. If you are prompted to insert the Windows 98 or Windows Me CD, replace the Creative WebCam NX Pro Installation CD with the appropriate CD.

Note: Windows 98 is available in various editions. Be sure to use the correct edition for your system.
 - ii. In the **Insert Disk** dialog box, click the **OK** button.
 - iii. Follow the instructions on the screen.

2. Check the image in the **Video preview** pane of the **Creative WebCam NX Pro Camera Configuration** dialog box. If it flickers or displays a series of dark bands, click the **Cancel Flicker** button.
3. Click the **Finish** button, and then restart your computer if you are prompted to do so.

For Windows 2000 only

1. When a **Digital Signature Not Found** dialog box appears, telling you that **Creative WebCam NX Pro** has been detected, click the **Yes** button.
2. Check the image in the **Video preview** pane of the **Creative WebCam NX Pro Camera Configuration** dialog box. If it flickers or displays a series of dark bands, click the **Cancel Flicker** button.
3. Click the **Finish** button, and then restart your computer if you are prompted to do so.

For Windows XP only

After connecting your camera, Windows automatically detects the device.

1. When the **Found New Hardware Wizard** dialog box appears, select **Install the software automatically (Recommended)**, and then click the **Next** button.

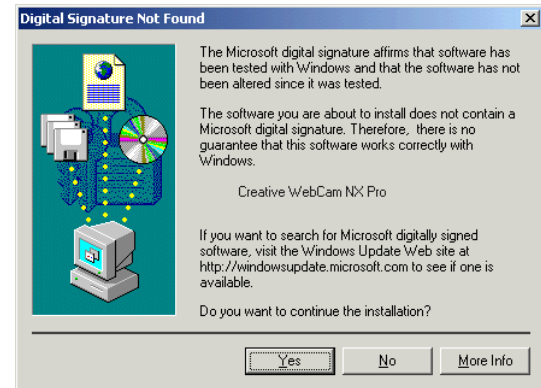


Figure 1-3: **Digital Signature Not Found** dialog box.

2. When a Hardware Installation Dialog box appears (Figure 1-4), ignore the message and click the **Continue Anyway** button. For more details on this warning message, see "Problems in Windows XP" on page B-2. Installation will be complete in a while.
3. Check the image in the **Video preview** pane of the **Creative WebCam NX Pro Camera Configuration** dialog box. If it flickers or displays a series of dark bands, click the **Cancel Flicker** button.
4. Click the **Finish** button, and then restart your computer if you are prompted to do so.

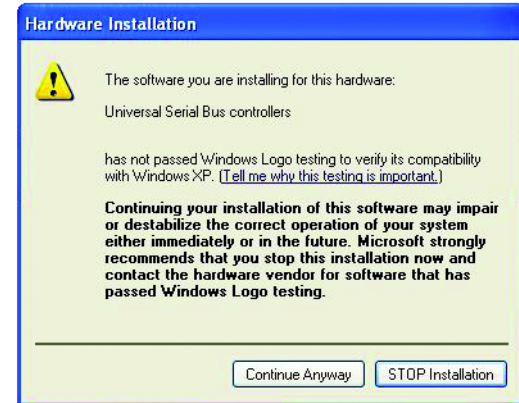


Figure 1-4: Hardware Installation dialog box

Verifying the installation in Windows 98/98SE and Windows Me

1. Right-click the **My Computer** icon on your desktop.
2. On the menu that appears, click **Properties**.
3. In the **System Properties** dialog box, click the **Device Manager** tab.
4. Click the plus (+) sign next to the **Imaging Device** icon. The entry "Creative WebCam NX Pro" should appear.

Verifying the installation in Windows 2000 & XP

1. Right-click on **My Computer**.
2. On the menu that appears, click **Properties**.
3. In the **System Properties** dialog box, click the **Hardware** tab.
4. Click the **Device Manager** button. A window appears.
5. Click the plus (+) sign next to the **Imaging Device** icon. The entry "Creative WebCam NX Pro" should appear.

CREATIVE



2

Using PC-CAM Center

Using PC-CAM Center

This chapter tells you how to quickly set up Creative WebCam NX Pro as a Web Camera using PC-CAM Center software.

For detailed information about the application's features and settings, refer to its Help file. (See "Starting PC-CAM Center Help" on page 2-4.)


Starting PC-CAM Center



- If PC-CAM Center does not recognize the camera correctly, see Appendix A, "Troubleshooting."
- PC-CAM Center automatically detects your installed model of Creative WebCam, and disables any unsupported features in the user interface.

PC-CAM Center is an easy to use application that enables you to take pictures and record videos with the Creative WebCam NX Pro. You can also view pictures and videos, and create and manage albums.

You can start PC-CAM Center in any of the following ways:

- Click **Start -> Programs -> Creative -> Creative WebCam -> Creative PC-CAM Center**.
- Double-click the Creative Cam Detector icon  in your taskbar. This icon appears if, during installation, you clicked the option for Creative Cam Detector to launch automatically at Windows startup.
- Plug your camera into the USB port and let Windows auto-detect it. You can choose to start PC-CAM Center in **Live Video** mode from a pop up window that appears.

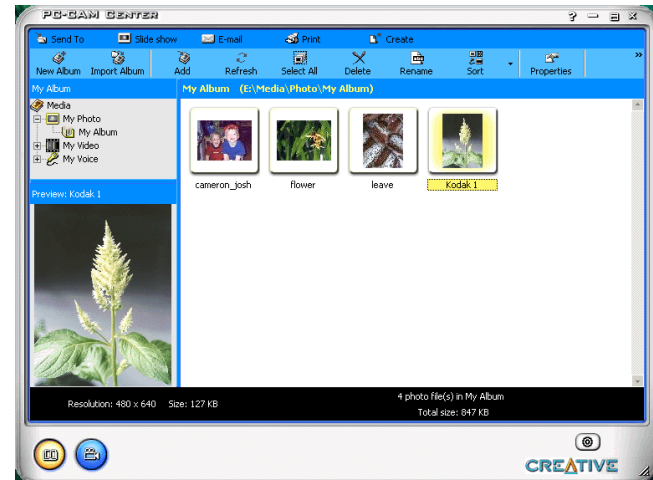


Figure 2-1: PC-CAM Center screen.

Capturing Images and Video

For more instructions on how to take a photo or record a video, refer to the PC-CAM Center Help file. To launch PC-CAM Center Help, see "Starting PC-CAM Center Help" on page 2-4

Taking a Photo



The **Save automatically** check box is selected, by default.

To take a photo:

1. In the **PC-CAM Center** window, click the **Live Video** button. The current camera view is displayed in the **Viewing** window.
2. In the **Save photo in** box, select the destination album for your photo.
3. To capture the image shown in the viewing window, click the **Snap an image** button at the bottom of the window. By default, the photo is saved automatically and added to the destination album.

To preview a photo:

1. Click the **Save automatically** check box to clear it, if you want to preview each photo before deciding whether to save it to the destination album.
2. Click the **Snap an image** button to take a photo. A preview of the photo is shown at the bottom-left corner of the **Live Video** window.
3. Click the **Save** button if you wish to store it in the destination album.

Recording a Video

To record a video:

1. In the **PC-CAM Center** window, click the **Live Video** button. The current camera view is displayed in the **Viewing** window.
2. In the **Video size** box, select a suitable resolution.
3. In the **Save video in** box, select a destination album for your video.
4. To start recording a video, click the **Record video** button. The button starts blinking to indicate that recording is now in progress.
5. To stop the recording, click the button again. The button stops blinking. By default, the video is saved automatically and added to the destination album.

To preview a video:

1. Click the **Save automatically** check box to clear it, if you want to preview each video before deciding whether to save it to the destination album.
2. Click the **Record video** button to start recording.
3. After you stop recording, click the **Play** button on the bottom left-hand corner of the **Live Video** window to preview the video.
4. If you wish to store it in the destination album, click the **Save** button after previewing the video.

Viewing a Photo

1. Click the **My Album** button. PC-CAM Center is now in **My Album** mode.
2. In the **My Album** box, click the **My Photo** folder and then click the album that contains the photos that you want to view.
Thumbnails of photos in the album are displayed in the **Thumbnails** window.
3. Double-click the thumbnail of the photo displayed in the **Thumbnails** window.
The photo, in its actual size, is displayed in the PC-CAM Center **Viewing** window.
If you are not satisfied with the result, you can select a higher resolution, and then capture the image again.

Viewing a Video

1. Click the **My Album** button. PC-CAM Center is now in **My Album** mode.
2. In the **My Album** box, click the **My Video** folder and then click the album that contains the video that you want to view.
Thumbnails of videos in the album are displayed in the **Thumbnails** window.
3. Double-click the thumbnail of the video you want to view.
The video plays in the **Viewing** window.
If you are not satisfied with the result, you can select a higher resolution, and then capture the video again.

Reactivating the Camera

If your computer goes into standby mode, your camera will go into suspend mode. You can reactivate the camera and computer by moving the mouse or pressing a key on the keyboard.



Starting PC-CAM Center Help

This Help file contains instructions on how to use PC-CAM Center to take photos and record videos. It also teaches you how to optimize settings to take high quality photos and videos.

To start the Help file:

1. Click the PC-Cam Center logo at the top left corner of PC-CAM Center's main window.
2. On the **PC-CAM Center** menu, click **Help**.

CREATIVE



3

Creative WebCam NX Pro Applications

Creative WebCam NX Pro Applications

The Creative WebCam NX Pro application CD includes the following:

- Creative PC-CAM Center
- Creative WebCam Monitor
- Microsoft NetMeeting
- Microsoft Internet Explorer

Creative PC-CAM Center

This powerful application lets you take pictures or record videos and store them in albums. You can also export pictures or videos to other programs, or send them as attachments in your e-mail message. There are various settings for you to adjust, allowing you to optimize the quality of your pictures and videos. For details, see "Using PC-CAM Center" on page 2-1.

Creative WebCam Monitor

Want to put a live snapshot of your office, coffee pot, or even your fishtank on your web page? Creative WebCam Monitor is the application to look at. Just point your camera at your subject and pick a time interval. WebCam Monitor does the rest, including uploading the snapshots to the Internet. WebCam Monitor also acts as a motion-detecting security system which automatically e-mails you when somebody comes near your PC while you are not present.

Microsoft NetMeeting

Microsoft NetMeeting is a voice communications client that includes support for international conferencing standards. It also provides true multi-user application sharing and data conferencing capabilities.

With its one-way or two-way video-conferencing features, your friends can see you even if they do not have a camera. Audio-only conversations and text chats are also supported. Two or more users can collaborate on a document, doodle on a whiteboard, or even share any Windows application in real-time over the Internet or on a corporate intranet.

Microsoft Internet Explorer

Microsoft Internet Explorer is an Internet browser that features ActiveX technology, so web pages can combine interactive ActiveX Controls, Java applets, and more, to create interactive content. ActiveMovie technology allows you to view multimedia content on the web, including MPEG audio and video.

CREATIVE



A

Technical Specifications

Technical Specifications

- | | |
|---------------------------------|--|
| Construction | <input type="checkbox"/> USB Port version: Remote camera head with a USB cable |
| Power | <input type="checkbox"/> From a USB port or USB hub with an external power supply |
| Sensor | <input type="checkbox"/> CMOS image sensor |
| Video Resolution | <input type="checkbox"/> Up to 640 x 480 pixels on a Minimum System |
| Picture Resolution - Still mode | <input type="checkbox"/> Up to 640 x 480 pixels
<input type="checkbox"/> With software interpolation: Up to 1024 x 768 pixels |
| Video formats | <input type="checkbox"/> RGB24
<input type="checkbox"/> I420 |
| Exposure control | <input type="checkbox"/> Automatic |
| Color balance | <input type="checkbox"/> Automatic |
| Field-of-view | <input type="checkbox"/> 40 degrees +/- 5% (horizontal) |
| Depth-of-field | <input type="checkbox"/> 15 centimeters (6 inches) to infinity |
| Port compatibility | <input type="checkbox"/> USB Port version: Universal Serial Bus port |



Software compatibility

- ❑ TWAIN, Video for Windows, WDM MiniDriver for DirectShow and Still Image driver (STI) that runs in Windows 98, Windows 98 SE, Windows 2000, Windows Me and Windows XP

CREATIVE



B

Troubleshooting

Troubleshooting

If you have a technical problem with this product, you may wish to consult our self-help tool “Knowledgebase” for online troubleshooting and solutions. Go to **www.creative.com** and select your region.

Problems Using Creative WebCam NX Pro

An application reports that the video driver is already in use, or that the camera cannot be found.

Do the following:

- The camera is not properly connected. To resolve this problem, ensure that the camera’s USB connector is inserted, and that the USB connector is enabled in the BIOS. Refer to your computer’s documentation for information on the BIOS.
- Reinstall the video capture drivers and restart your computer.

The camera’s Power LED does not light up, or in Windows 98/98 SE, Me and 2000, the computer restarts for no apparent reason.

You may have USB devices drawing too much power from your computer. This can happen especially when connecting USB devices to a passive or self-powered USB hub. In Windows XP, a dialog box similar to Figure B-1 appears.

Do the following:

- Connect the camera directly to your computer’s USB port.
- Use a USB hub with an external power supply.

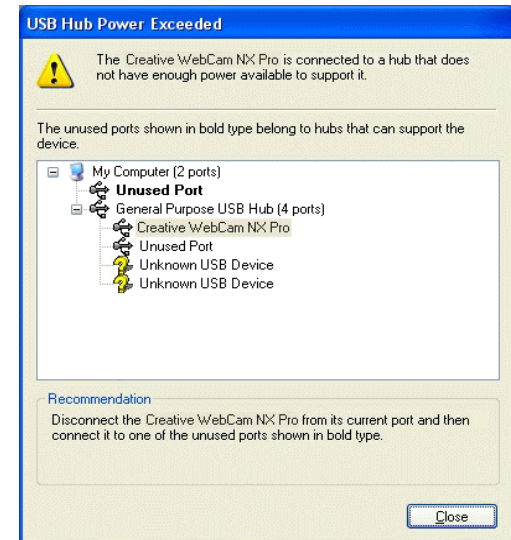


Figure B-1: **USB Hub Power Exceeded** dialog box

Insufficient system resources reserved for the USB port, causing the system to be unable to function.

There are too many devices in the system, causing IRQ problems with the system's USB controller.

Do the following:

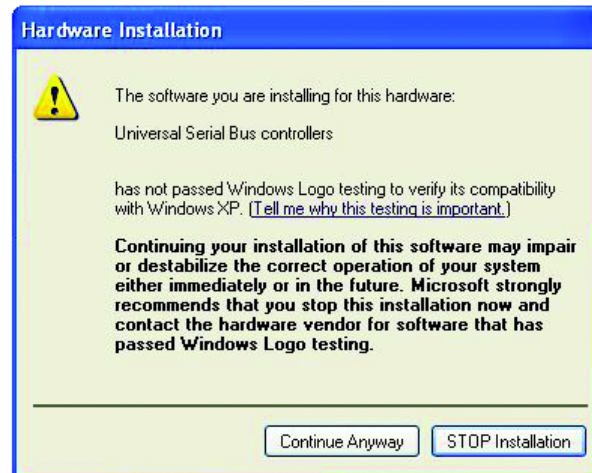
1. Remove some devices from the system.
2. Restart the system.

The system will rearrange the resources automatically.

Problems in Windows XP

A Hardware Installation error message appears on a Windows XP operating system when applications are being installed.

At the time of this product's release, Microsoft strongly encouraged companies to submit their hardware solutions for certification. If a hardware device driver is not submitted, or does not qualify, for Microsoft certification, a warning message similar to the one below appears.



You may see this message when installing a driver. If you do, you may choose to click the **Continue Anyway** button. Creative has tested the driver on Windows XP, and it does not impair or destabilize your computer.

CREATIVE



C

Note on USB Compatibility

Note on USB Compatibility



To look for a USB compatible product, you can visit the product search page at the official USB Web site: <http://www.usb.org/app/search/products>.

While testing Creative WebCam NX Pro on motherboards with integrated Universal Serial Bus (USB) ports, we encountered a small number of motherboards that do not meet the USB specification exactly. These and other non-USB-compliant motherboards may not operate correctly with Creative WebCam NX Pro. Fortunately, the manufacturers of some of these motherboards have released new versions of motherboards or BIOS to address the problem.

If the setup program warns you that your motherboard's USB port is incompatible with Creative WebCam NX Pro, or if the camera does not work on your system and you suspect that the problem may be related to your computer's USB port, the following is a list of available options:

1. Contact your computer vendor.
Your computer vendor may be able to upgrade your motherboard or its BIOS to a newer version that addresses USB incompatibilities.
2. Use a PCI host adapter that provides USB connectors.
If you are not able to upgrade your motherboard or its BIOS, we recommend this approach.
3. Attach the Creative WebCam NX Pro to a USB hub with an external power supply.
Some USB devices (such as monitors) also operate as USB hubs; you can also buy USB hubs which are to be attached to your computer's USB port. However, in some cases, attaching a USB hub to a non-USB-compliant USB motherboard connector will not solve the problem.

Free Manuals Download Website

<http://myh66.com>

<http://usermanuals.us>

<http://www.somanuals.com>

<http://www.4manuals.cc>

<http://www.manual-lib.com>

<http://www.404manual.com>

<http://www.luxmanual.com>

<http://aubethermostatmanual.com>

Golf course search by state

<http://golfingnear.com>

Email search by domain

<http://emailbydomain.com>

Auto manuals search

<http://auto.somanuals.com>

TV manuals search

<http://tv.somanuals.com>