

**CREATIVE**

**WEBCAM**

**PROeX**

# *User Manual*

---

## Creative WebCam Pro eX

Information in this document is subject to change without notice and does not represent a commitment on the part of Creative Technology Ltd. No part of this manual may be reproduced or transmitted in any form or by any means, electronic or mechanical, including photocopying and recording, for any purpose without the written permission of Creative Technology Ltd. The software described in this document is furnished under a license agreement and may be used or copied only in accordance with the terms of the license agreement. It is against the law to copy the software on any other medium except as specifically allowed in the license agreement. The licensee may make one copy of the software for backup purposes.

Copyright © 1998-2003 Creative Technology Ltd. All rights reserved.

Version 2.0

February 2003

Sound Blaster and Blaster are registered trademarks of Creative Technology Ltd. in the United States and/or other countries. Microsoft, MS-DOS, and Windows are registered trademarks of Microsoft Corporation. All rights reserved. All other products are trademarks or registered trademarks of their respective owners.

CREATIVE

CREATIVE®

WEBCAM

PROex

Contents

# Contents

## Introduction

Before You Begin.....	i
Package Contents .....	i
README file.....	i
System Requirements.....	ii
Document Conventions .....	ii

## I Installing Creative WebCam Pro eX

About Creative WebCam Pro eX.....	I-1
Installing Creative WebCam Pro eX.....	I-1
In Windows 98/98 SE/Me.....	I-2
In Windows 2000 .....	I-5
In Windows XP.....	I-7
Verifying the installation.....	I-8
In Windows 98/98 SE/Me/2000/XP .....	I-8

## 2 Using Creative WebCam Pro eX as a Web Camera

Starting PC-CAM Center.....	2-1
Capturing Images and Video .....	2-2
Taking a Photo in Preview Mode.....	2-2
Recording a Video in Preview Mode .....	2-3
Viewing a Photo .....	2-3
Viewing a Video.....	2-4

Reactivating the Camera .....	2-4
Starting PC-CAM Center Help .....	2-4

### **3 Creative WebCam Pro eX Applications**

Creative PC-CAM Center .....	3-1
Creative WebCam Monitor .....	3-1
Microsoft NetMeeting .....	3-1

## **Appendixes**

### **A Technical Specifications**

Construction .....	A-1
Camera housing .....	A-1
Power .....	A-1
Sensor .....	A-1
Resolution .....	A-1
Sensitivity .....	A-1
Video formats .....	A-2
Exposure control .....	A-2
Color balance .....	A-2
Color matrix .....	A-2
Port compatibility .....	A-2
Software compatibility .....	A-2

### **B Troubleshooting**

Problem Installing Software .....	B-1
Problems Using Creative WebCam Pro eX .....	B-1

Problems in Windows XP ..... B-3

**C Note on USB Compatibility**

CREATIVE

CREATIVE

WEBCAM

PROex

## Introduction

# Introduction

---

Creative WebCam Pro eX is a 24-bit, 16.7-million-color digital video camera kit that gives you everything you need to capture still images and full-color video. Not only that, it also allows you to communicate face-to-face with others on the Internet! Creative WebCam Pro eX is designed to be used on your computer as well as your laptop!

Creative WebCam Pro eX is supplied with the following software:

- Creative PC-CAM Center
- Creative WebCam Monitor
- Microsoft® NetMeeting®

For more information, see "Creative WebCam Pro eX Applications" on page 3-1.

## Before You Begin

### Package Contents

Your package includes the following items:

- Creative WebCam Pro eX
- Creative WebCam Pro eX installation CD
- Quick Start leaflet
- Hands-free microphone

### README file

The README file on the CD-ROM contains information not available at the time of printing. Read the file before you begin installing Creative WebCam Pro eX.



## System Requirements

- Intel® Pentium® II 233 MHz or higher IBM® compatible PC
- 64 MB RAM on motherboard
- 100 MB free hard disk space (for installation of all software titles)
- Available USB port or self-powered USB hub
- Microsoft Windows® 98, Windows 98 Second Edition (SE), Windows Millennium Edition (Me), Windows 2000 or Windows XP
- Display adapter that supports 16-bit color at a resolution of 800 x 600 pixels
- CD-ROM drive installed
- Sound Blaster® or other Windows-compatible audio card and microphone (required for videoconferencing)
- Modem or LAN access to the Internet (required for videoconferencing)

## Document Conventions

The following typographical conventions are used throughout this document:



Note. This highlights additional or important information about a feature.



Caution! This highlights proper usage of your product. Use this information to avoid risky situations.



Warning! This warns you of possible hazards to yourself or your product, that may result in injury or damage.

CREATIVE

CREATIVE

WEBCAM

PROex

1

Installing Creative WebCam Pro  
eX

# Installing Creative WebCam Pro eX

This chapter tells you how to quickly install Creative WebCam Pro eX and the software that comes with it.

## About Creative WebCam Pro eX

Figure 1-1 highlights the features of Creative WebCam Pro eX.

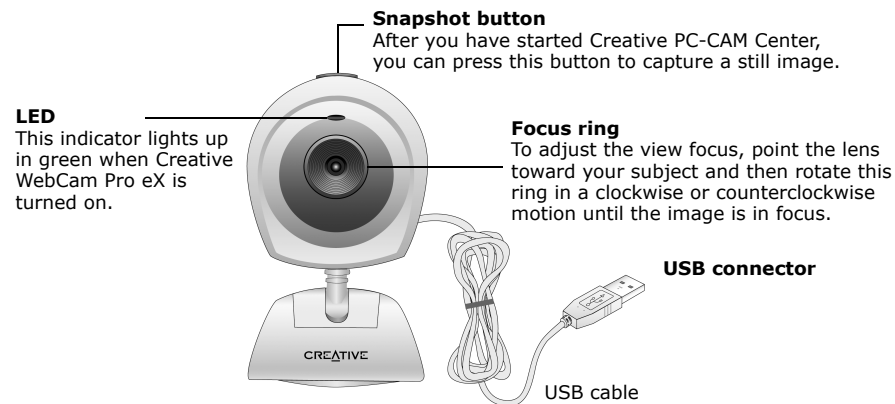


Figure 1-1: Creative WebCam Pro eX.

## Installing Creative WebCam Pro eX

Use the installation procedures for your operating system.

For users of Windows 98, Windows 98 SE and Windows Millennium, see "In Windows 98/98 SE/Me" in the section that follows.

For users of Windows 2000 and Windows XP, see "In Windows 2000" on page 1-5 and "In Windows XP" on page 1-7.



## In Windows 98/98 SE/Me

1. Do not connect Creative WebCam Pro eX to your computer before installing the drivers.  
If you accidentally begin installation with Creative WebCam Pro eX connected, the **Add New Hardware Wizard** dialog box appears. Click the **Cancel** button.
2. Insert the Creative WebCam Pro eX CD into your CD-ROM drive.
3. Click the names of the drivers and applications you want to install on your computer.
4. Follow the instructions on the screen to complete the installation.  
You may be asked, after an application is installed, if you want to restart your computer. Select **No** until all the drivers and applications are installed.



- You can safely install the Creative WebCam Pro eX with your computer turned on.
- The USB port(s) on your computer may be found on the front panel instead of the back panel.
- You can daisy-chain the Creative WebCam Pro eX through another USB device or attach the Creative WebCam Pro eX to a self-powered USB hub.
- If you have a microphone, connect it to your audio card. Most audio cards have an external microphone connector. Read your audio card's documentation for more information.

5. Connect Creative WebCam Pro eX's USB cable to an available USB port on your computer (Figure 1-2). Place Creative WebCam Pro eX on top of your computer monitor or another flat surface, or fix it to your laptop screen (Figure 1-3). Windows automatically detects the device.

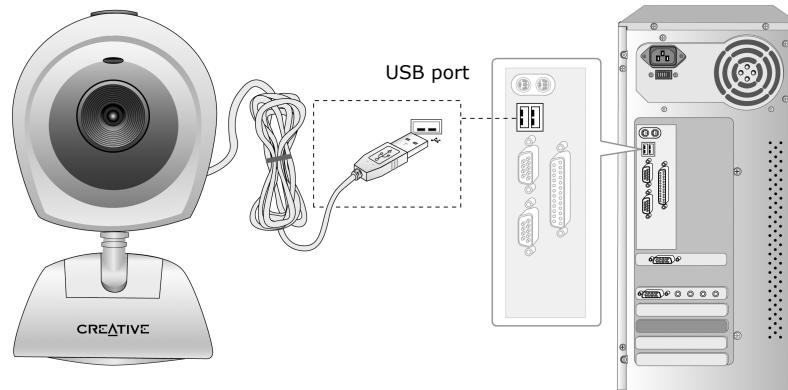


Figure 1-2: Connecting Creative WebCam Pro eX to your computer.



Figure 1-3: Connecting Creative WebCam Pro eX to your laptop.

- i. If you are prompted to insert the Windows 98/98 SE CD, replace the Creative WebCam Pro eX CD with the appropriate CD.  
**Note:** Windows 98 is available in various editions. Be sure to use the correct edition for your system.
- ii. In the **Insert Disk** dialog box, click the **OK** button.
- iii. Follow the instructions on the screen.
6. Check the image in the **Video preview** pane of the **Creative WebCam Pro eX Camera Configuration** dialog box. If it flickers or displays a series of dark bands, click the **Cancel Flicker** button.
7. Click the **Finish** button, and then restart your computer if you are prompted to do so.

## In Windows 2000

1. Do not connect Creative WebCam Pro eX to your computer before installing the drivers. If you accidentally begin installation with Creative WebCam Pro eX connected, the **Found New Hardware Wizard** dialog box appears. Click the **Cancel** button.
2. Insert the Creative WebCam Pro eX CD into your CD-ROM drive.
3. Click the names of the drivers and applications you want to install on your computer.
4. Follow the instructions on the screen to complete the installation. You may be asked, after an application is installed, if you want to restart your computer. Do not restart your computer until all the drivers and applications are installed.
5. Connect Creative WebCam Pro eX's USB cable to an available USB port on your computer (Figure 1-2). Place Creative WebCam Pro eX on top of your computer monitor or another flat surface, or fix it to your laptop screen (Figure 1-3). Windows automatically detects the device.
6. When the **Digital Signature Not Found** dialog box similar to Figure 1-4 appears, telling you that **Creative WebCam Pro eX (Video)** has been detected, ignore the message and click the **Yes** button.

When another **Digital Signature Not Found** dialog box similar to Figure 1-4 appears, telling you that **Creative WebCam Pro eX** has been detected, ignore the message and click the **Yes** button. Installation will be complete in a while.



Figure 1-4: **Digital Signature Not Found** dialog box.



7. Check the image in the **Video preview** pane of the **Creative WebCam Pro eX Camera Configuration** dialog box. If it flickers or displays a series of dark bands, click the **Cancel Flicker** button.
8. Click the **Finish** button, and then restart your computer if you are prompted to do so.



## In Windows XP



At the time of this product's release, Microsoft strongly encouraged companies to submit their hardware solutions for certification. If a hardware device driver is not submitted, or does not qualify, for Microsoft certification, a warning message appears.

You may see this message when installing this driver. If you do, you may choose to click the **Continue Anyway** button. Creative has tested this driver on Windows XP, and it does not impair or destabilize your computer.

If you need more XP-related information, go to the product web site's Help or speak with Creative Technical Support staff.

1. Do not connect Creative WebCam Pro eX to your computer before installing the drivers.  
If you accidentally begin installation with Creative WebCam Pro eX connected, the **Found New Hardware Wizard** dialog box appears. Click the **Cancel** button.
2. Insert the Creative WebCam Pro eX CD into your CD-ROM drive.
3. Click the names of the drivers and applications you want to install on your computer.
4. Follow the instructions on the screen to complete the installation. You may be asked, after an application is installed, if you want to restart your computer. Do not restart your computer until all the drivers and applications are installed.
5. Connect Creative WebCam Pro eX's USB cable to an available USB port on your computer (Figure 1-2). Place Creative WebCam Pro eX on top of your computer monitor or another flat surface.  
Windows automatically detects the device. Installation will be complete in a while.
6. If the **Found New Hardware Wizard** dialog box appears, select **Install the software automatically (Recommended)**, and then click the **Next** button.
7. If Microsoft warning dialog boxes appear, ignore the messages and click the **Continue Anyway** button.
8. Check the image in the **Video preview** pane of the **Creative WebCam Pro eX Camera Configuration** dialog box. If it flickers or displays a series of dark bands, click the **Cancel Flicker** button.
9. Click the **Finish** button, and then restart your computer if you are prompted to do so.

## Verifying the installation

### In Windows 98/98 SE/Me/2000/XP

1. Click **Start** -> **Settings** -> **Control Panel**.  
In Windows XP, click **Start** -> **Control Panel**.
2. Double-click the **System** icon.
3. In the **System Properties** dialog box, click the **Device Manager** tab.  
In Windows 2000/XP, click the **Hardware** tab, and then click the **Device Manager** button.
4. Click the plus (+) sign next to the **Imaging Device** icon.  
The entry "**Creative WebCam Pro eX (Video)**" should appear. If it does not, repeat the steps for the correct operating system: "In Windows 98/98 SE/Me" on page 1-2, "In Windows 2000" on page 1-5 or "In Windows XP" on page 1-7.
5. Click the plus (+) sign next to the **Universal Serial Bus controllers** icon.  
The entry "**Creative WebCam Pro eX (Composite)**" should appear. If it does not, repeat the steps for the correct operating system: "In Windows 98/98 SE/ Me" on page 1- 2, "In Windows 2000" on page 1- 5 or "In Windows XP" on page 1- 7.

CREATIVE

CREATIVE

WEBCAM

PROeX

2

Using Creative WebCam Pro eX as  
a Web Camera

# Using Creative WebCam Pro eX as a Web Camera

---

## Starting PC-CAM Center



If PC-CAM Center does not recognize the camera correctly, see Appendix A, "Troubleshooting".

PC-CAM Center is an easy-to-use application that enables you to take pictures and record short videos with the Creative WebCam Pro eX. You can also view pictures and videos, and create and manage albums.

To start PC-CAM Center, do one of the following:

- Click **Start** -> **Programs** -> **Creative** -> **Creative WebCam** -> **PC-CAM Center**.
- Press the **Snapshot** button on the camera.
- If, during installation, you clicked the option for PC-CAM Center to launch automatically at Windows startup, you will have an icon on your taskbar. Click this icon.
- You can start PC-CAM Center in **Live Video** mode from the menu that appears when your WebCam Pro eX is auto detected.

After PC-CAM Center is started, the PC-CAM Center screen similar to Figure 2-1 appears. The following sections describe the more commonly used operations. For more details on how to use PC-CAM Center, see the section “Starting PC-CAM Center Help” on page 2-4.



Figure 2-1: **PC-CAM Center** screen.

## Capturing Images and Video

With PC-CAM Center, you can take photos and record videos in two modes — with and without a preview. The preview mode is active by default.

For instructions on how to take a photo or record a video without a preview, refer to the PC-CAM Center Help file. To launch PC-CAM Center Help, see “Starting PC-CAM Center Help” on page 2-4.

### Taking a Photo in Preview Mode

To take a photo in the default preview mode:

1. In the **PC-CAM Center** window, click the **Live Video** button. The current camera view is displayed in the **Viewing** window.
2. In the **Save Photo in** box, select the destination album for your photo.
3. If the **Save automatically** check box is selected, click to clear it.

*Using Creative WebCam Pro eX as a Web Camera 2-2*

4. To capture the image in the viewing window, click the **Snap Photo** button at the bottom of the window.  
The image is captured but not saved. A preview of the photo is shown at the bottom-left corner of the **Live Video** window.
5. Click the **Save** button.  
The photo is added to the destination album.

## Recording a Video in Preview Mode

To record a video in the default preview mode:

1. In the **PC-CAM Center** window, click the **Live Video** button. The current camera view is displayed in the **Viewing** window.
2. In the **Video Size** box, select a suitable resolution.
3. In the **Save Video in** box, select the destination album for your photo.
4. If the **Save automatically** check box is selected, click to clear it.
5. To start recording a video, click the **Capture video** button.  
The button starts blinking to indicate that recording is now in progress.
6. To stop the recording, click the button again.  
The button stops blinking. The video is captured as an AVI file but is not saved.
7. To preview the video, click the **Play** button on the bottom-left corner of the **Live Video** window.  
After you have previewed the video, and have decided that you want to save the video, click the **Save** button.  
The video capture is added to the destination album.

## Viewing a Photo

To view a photo you have taken:

1. Click the **My Album** button. PC-CAM Center is now in **My Album** mode.
2. In the **My Album** box, click the **My Photo** folder and then click the album that contains the photos that you want to view.  
The album's thumbnails are displayed in the **Thumbnails** window.

3. Double-click the thumbnail of the image that is displayed in the **Thumbnails** window.  
The image, in its actual size, is displayed in the PC-CAM Center **Viewing** window.  
If you are not satisfied with the result, you can select a higher resolution, and then capture the image again.

## Viewing a Video

To view a video you have taken:

1. Click the **My Album** button. PC-CAM Center is now in **My Album** mode.
2. In the **My Album** box, click the **My Video** folder and then click the album that contains the video that you want to view.  
The album's thumbnails are displayed in the **Thumbnails** window.
3. Double-click the thumbnail of the video you want to view.  
The video will play in the **Viewing** window.  
If you are not satisfied with the result, you can select a higher resolution, and then capture the video again.

## Reactivating the Camera

If your computer goes into standby mode, your camera will go into suspend mode. You can reactivate the camera and computer using the following methods:

- Move the mouse or press any key on the keyboard.
- Press the camera's **Snapshot** button.

## Starting PC-CAM Center Help

This Help file contains instructions on how to use PC-CAM Center to take pictures and record short videos. It also teaches you how to change settings so as to achieve optimum quality for your pictures and videos.

To start the Help file:

1. Click the Creative logo at the top left corner of PC-CAM Center's main window.
2. On the **PC-CAM Center** menu, click **Help**.



CREATIVE

CREATIVE

WEBCAM

PROeX

3

Creative WebCam Pro eX  
Applications



# Creative WebCam Pro eX Applications

---

The Creative WebCam Pro eX application CD includes the following:

- Creative PC-CAM Center
- Creative WebCam Monitor
- Microsoft NetMeeting

## **Creative PC-CAM Center**

This powerful application lets you take pictures or record videos and store them in albums. You can also export pictures or videos to other programs, or send them as attachments in your e-mail message. There are various settings for you to adjust, allowing you to optimize the quality of your pictures and videos.

## **Creative WebCam Monitor**

If you are thinking of going “live” on the Internet, Creative WebCam Monitor is the application to look at. Just point your camera at your subject and pick a time interval. Creative WebCam Monitor does the rest, including uploading the snapshots to the Internet. Creative WebCam Monitor also acts as a motion-detecting security system which automatically e-mails you when somebody comes near your computer while you are not present.

## **Microsoft NetMeeting**

Microsoft NetMeeting is a voice communications client that includes support for international conferencing standards. It also provides true multi-user application sharing and data conferencing capabilities.

With its one-way or two-way videoconferencing features, your friends can see you even if they do not have a camera. Audio-only conversations and text chats are also supported. Two or more users can collaborate on a document, doodle on a whiteboard, or even share any Windows application in real-time over the Internet or on a corporate intranet.

CREATIVE

CREATIVE

WEBCAM

PROex

A

Technical Specifications

# Technical Specifications

---

Construction	Remote camera head with a USB cable
Camera housing	Base and flip-top lens housing with manual vertical tilt of 60 degrees and a horizontal tilt of 360 degrees
Power	From a USB port or self-powered USB hub (powered by an external power source)
Sensor	CCD image sensor
Resolution	<ul style="list-style-type: none"><li><input type="checkbox"/> Still Mode<ul style="list-style-type: none"><li>• 1024 x 768 (with software interpolation)</li><li>• 800 x 600 (with software interpolation)</li><li>• 640 x 480</li><li>• 352 x 288</li><li>• 320 x 240</li><li>• 176 x 144</li><li>• 160 x 120</li></ul></li><li><input type="checkbox"/> Video Mode<ul style="list-style-type: none"><li>• 640 x 480</li><li>• 352 x 288</li><li>• 320 x 240</li><li>• 176 x 144</li><li>• 160 x 120</li></ul></li></ul>
Sensitivity	6 lux

Video formats	<input type="checkbox"/> 24-bit RGB <input type="checkbox"/> I420
Exposure control	Automatic (optional manual control with software)
Color balance	Automatic (optional manual control with software)
Color matrix	Preset and integral to camera
Port compatibility	Universal Serial Bus port version 1.1
Software compatibility	TWAIN, Video for Windows, DirectShow, and Still Image driver that run in Windows 98, Windows 98 SE, Windows Me, Windows 2000 and Windows XP.

CREATIVE

CREATIVE

WEBCAM

PROex

**B**

**Troubleshooting**

# Troubleshooting

---

## Problem Installing Software

**The setup program for Creative WebCam Pro eX does not run automatically after you insert the installation CD into the drive.**

The AutoPlay feature in your Windows system may not be enabled.

*To install the software from the CD:*

1. Insert the installation CD in the CD-ROM drive.
2. Click **Start** -> **Run**.
3. In the **Run** dialog box, click **D:\CTRUN\SETUP.EXE** (where D: is your CD-ROM drive)
4. Follow the instructions on the screen to complete the installation.

## Problems Using Creative WebCam Pro eX

**There is no USB port available to connect the USB cable.**

*Do one of the following:*

- Unplug the device currently connected.
- Add a self-powered USB hub.
- Add a PCI USB card.

**The image is too bright.**

The amount of light entering the camera has exceeded the exposure control limit. There may be a very bright object in the camera's view.

Avoid pointing the camera at very bright objects (for example, sunlight, lights, or highly reflective surfaces).

**An application reports that the video driver is already in use, or that the camera cannot be found.**

*Do one of the following:*

- Ensure that the Creative WebCam Pro eX's USB connector is properly inserted, and that the USB port is enabled in the BIOS. Refer to your computer's documentation for information on the BIOS.
- Reinstall the video capture drivers and restart your computer.

**Insufficient system resources reserved for the USB port, causing the system to be unable to function.**

There are too many devices in the system, causing IRQ problems with the system's USB controller.

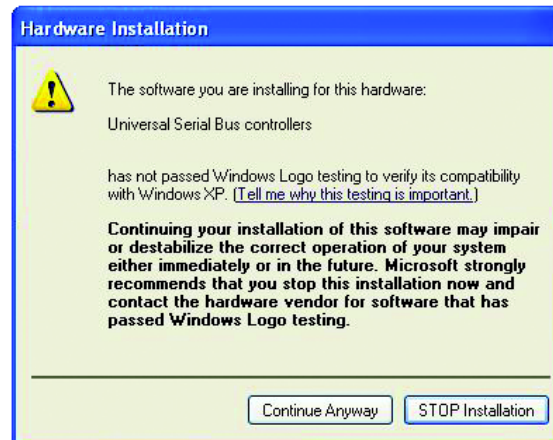
*Do the following:*

1. Remove some devices from the system.
2. Restart the system.  
The system will automatically rearrange the resources.

## Problems in Windows XP

### A Hardware Installation error message appears on a Windows XP operating system when applications are being installed.

At the time of this product's release, Microsoft strongly encouraged companies to submit their hardware solutions for certification. If a hardware device driver is not submitted, or does not qualify, for Microsoft certification, a warning message similar to the one below appears.



You may see this message when installing a Creative driver. If you do, you may choose to click the **Continue Anyway** button. Creative has tested the driver on Windows XP, and it does not impair or destabilize your computer.

If you need more XP-related information, please visit our website at [www.creative.com](http://www.creative.com).



CREATIVE

CREATIVE

WEBCAM

PROex

C

Note on USB Compatibility

# Note on USB Compatibility

---

While testing Creative WebCam Pro eX on PC motherboards with integrated Universal Serial Bus (USB) ports, we encountered a small number of motherboards that do not meet the USB specification exactly. These and other non-USB-compliant motherboards may not operate correctly with Creative WebCam Pro eX. Fortunately, the manufacturers of some of these motherboards have released new versions of motherboards or BIOS to address the problem.

If the setup program warns you that your motherboard's USB port is incompatible with Creative WebCam Pro eX, or if the camera does not work on your system and you suspect that the problem may be related to your PC's USB port, the following is a list of available options:

1. Contact your PC vendor.  
Your PC vendor may be able to upgrade your motherboard or its BIOS to a newer version that addresses USB incompatibilities.
2. Use a PCI host adapter that provides USB connectors.  
If you are not able to upgrade your motherboard or its BIOS, we recommend this approach.
3. Attach Creative WebCam Pro eX to a powered USB hub.  
Some USB devices (such as monitors) also operate as powered USB hubs; you can also buy dedicated powered USB hubs which are to be attached to your PC's USB port. However, in some cases, attaching a powered USB hub to a non-USB-compliant USB motherboard connector will not solve the problem.



To look for a USB compatible product, you can visit the product search page at the official USB Web site:  
**<http://www.usb.org/app/search/products>**.

## Free Manuals Download Website

<http://myh66.com>

<http://usermanuals.us>

<http://www.somanuals.com>

<http://www.4manuals.cc>

<http://www.manual-lib.com>

<http://www.404manual.com>

<http://www.luxmanual.com>

<http://aubethermostatmanual.com>

Golf course search by state

<http://golfingnear.com>

Email search by domain

<http://emailbydomain.com>

Auto manuals search

<http://auto.somanuals.com>

TV manuals search

<http://tv.somanuals.com>