

**NEWera**<sup>®</sup>  
a heating revolution from Creda

**Creda**

4F  
Sensair Automatic Fan  
Storage Heater

Model Nos: 70305S 70315S  
Cat. Nos: SFH18AW SFH24AW

## Owners Guide

### IMPORTANT INSTRUCTIONS

Retain these instructions for future reference, read them carefully and note also the information given on the heater.

### IMPORTANT SAFETY INFORMATION

#### WARNING - THE SURFACE OF THIS HEATER CAN BE HOT.

The surface temperatures of this heater are within the requirements of EN60-335 the European Standard covering the safety requirements of electric storage heating appliances, and momentary contact with any part of the heater should not cause injury. However, in order to be effective, heaters of any type do get hot, especially around the air outlet grille.

Therefore if aged/infirm persons or young children are likely to be left unsupervised in the vicinity of this heater, precautions should be taken to ensure that prolonged contact with the heater cannot occur. Under these circumstances we recommend that a guard is fitted around the heater. A range of guards for Creda storage heaters is available. For further information please contact Applied Energy Products Limited on (01733) 456 789.

- **DO NOT COVER** the heater with clothing etc. at any time, or position furniture close to or against the heater. Ensure clearances of at least 150mm between the heater and curtains.
- **DO NOT ATTEMPT TO MOVE OR REPOSITION THIS HEATER WITHOUT INITIALLY SEEKING EXPERT ADVICE.**
- **IF, DURING ANY REASSEMBLY OF THE HEATER, A PART OF THE THERMAL INSULATION SHOWS DAMAGE OR DETERIORATION WHICH MAY IMPAIR SAFETY, IT SHOULD BE REPLACED BY AN IDENTICAL PART.**
- **DO NOT SIT OR STAND ON THE HEATER.**
- **DO NOT SPILL LIQUIDS ONTO THE APPLIANCE. IF YOU DO, SWITCH THE HEATER OFF AND GET A QUALIFIED ELECTRICIAN TO CHECK IT.**
- **DO NOT POKE OBJECTS THROUGH THE GRILLE OR VENTILATION SLOTS.**
- **DO NOT USE POLISHES ON THE HEATER OR ON FURNITURE NEAR TO IT.** The hot interior of the heater can produce paraffin smells from polish vapours which may last for a number of hours.
- **DO NOT ATTEMPT TO REPAIR THE HEATER YOURSELF.** In case of breakdown or other failure, switch off the heater at the wall switches and consult your supplier, local electricity company or Applied Energy Products Ltd. Always ensure that the heater is switched off at both wall switches and the fuses removed before any repair is carried out.

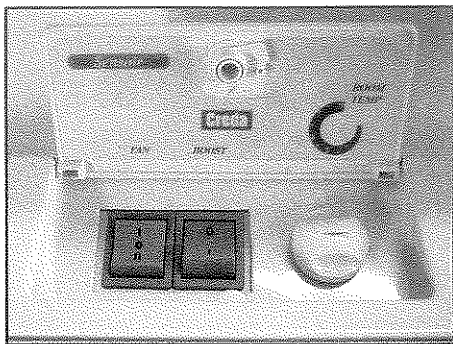
#### HOW IT WORKS:

This heater stores heat on the off peak tariff, and releases it on demand through the fan. In addition to the storage heater function, a BOOST element is available to produce instant heat when, for example, there is a sudden change in the weather or, in summer when the storage heater has been switched off, the fan heater can be used to provide heat on an occasional chilly day. Note that the fan heater uses normal price electricity and will therefore be more expensive to run than the storage heater alone.

#### FIRST HEATING OF A NEW HEATER:

A slight smell shall be produced by the heater during the first few days of operation. **ROOMS MUST BE WELL VENTILATED AND YOUNG CHILDREN, CAGED BIRDS, OR PERSONS WITH RESPIRATORY COMPLAINTS MUST NOT REMAIN IN CLOSE PROXIMITY TO THE HEATER DURING THE FIRST 48 HOURS OF THE COMMISSIONING PERIOD.**

## SETTING THE CONTROLS



The controls are located under the lockable flap at the right hand corner of the top panel.

### STORAGE INPUT:

The amount of heat stored each night is controlled automatically, taking into account any residual heat and the ambient room temperature.

### OUTPUT CONTROLS:

#### FUNCTION

1. The **FAN SWITCH** offers FAN OFF - (0), LOW FAN (I), and HIGH FAN (II).
2. The **BOOST SWITCH** offers BOOST OFF (0) and BOOST ON (I).
3. The **ROOM TEMP.** control is set by the user to give the comfort level required, number 1 being the lowest room temperature and can be used for frost protection.

#### OPERATION

The ROOM TEMP control overrides the use of the FAN and BOOST SWITCHES, i.e. if LOW FAN has been selected, the ROOM TEMP control will allow the fan to run until the required comfort level has been achieved. The fan will then automatically cycle ON and OFF to maintain this temperature. If the room feels too warm the ROOM TEMP control should be adjusted anticlockwise, conversely if the room feels too cool it should be adjusted clockwise.

LOW FAN should be adequate for normal use with HIGH FAN being available for exceptional conditions.

The BOOST option is only available when FAN has been selected. When the heater is fully charged, and the BOOST is switched ON, safety devices will allow only  $\frac{1}{2}$  the BOOST element to be activated when the core is partially depleted. When the core is almost fully depleted, the heater will automatically power the full BOOST element. If LOW FAN has been operating when the heater automatically powers the full BOOST, HIGH FAN shall be activated regardless of switch setting.

#### CLEANING:

To maintain the appearance of the heater, wipe occasionally with a dry cloth when the heater is cool. DO NOT USE abrasive powders or furniture polish.

**Applied Energy Products Limited**  
Morley Way  
Peterborough  
England  
PE2 9JJ

Telephone: (01733) 456 789

This appliance conforms to the following EEC Directives:  
Low Voltage Equipment 73/23/EEC  
93/68/EEC  
Electromagnetic Compatibility 89/336/EEC  
92/31/EEC  
93/68/EEC



Part No. 84703

Iss. No. 3 04/03

## Free Manuals Download Website

<http://myh66.com>

<http://usermanuals.us>

<http://www.somanuals.com>

<http://www.4manuals.cc>

<http://www.manual-lib.com>

<http://www.404manual.com>

<http://www.luxmanual.com>

<http://aubethermostatmanual.com>

Golf course search by state

<http://golfingnear.com>

Email search by domain

<http://emailbydomain.com>

Auto manuals search

<http://auto.somanuals.com>

TV manuals search

<http://tv.somanuals.com>