

### 1 Install/Configure CEN-RFGW-EX Gateway

The CEN-RFGW-EX gateway is an RF wireless transceiver designed for use with the MLX-2 infiNET EX™ LCD Handheld Remote. In order for the CEN-RFGW-EX and the MLX-2 to work together, they must go through the acquire process described here.

#### A. Apply Power

A choice of Cresnet® or PoE (Power-over-Ethernet) powers the CEN-RFGW-EX. The gateway model CEN-RFGW-EX-PWE includes a PoE Injector, which connects in line with the Ethernet cable connected to the gateway. Or, using Crestron's 5-port PoE switch CEN-SW-POE-5 (sold separately), up to four gateways and other PoE devices can be powered from a single location.

**NOTE:** Power should be supplied through either the **LAN PoE** port or the **NET** port, but not both.

#### B. Ethernet Configuration

The CEN-RFGW-EX is set up for automatic configuration using DHCP. It is necessary for a DHCP server to be on the same subnet as the CEN-RFGW-EX.

#### C. Activate Acquire Mode

Using a straightened paperclip or similar device, press the recessed **ACQUIRE** button on the gateway. The associated LED will light, indicating that the gateway is in the *Acquire* mode.

Only one gateway at your site can be in *Acquire* mode at any given time.

### 2 Install/Configure MLX-2 Remote

**NOTE:** There is no need to connect the MLX-2 to your PC via USB.

**A.** The MLX-2 ships from the factory with a fresh set of batteries packaged separately. Insert them into the compartment in the back of the remote. (The battery orientation is embossed in the battery compartment.)

**B.** Once the batteries are inserted, you should see the "Initializing" message for a few seconds on your screen, as shown in the next column, followed by the "Welcome" message.

INITIALIZING  
REMOTE  
CONTROL

Welcome to  
Crestron's  
MLX-2 remote.  
  
Please press  
the > key to  
enter the remote  
setup mode.

PAGE 1/1

**C.** To begin configuring the remote, follow the screen instruction and press the **>** key next to the **HOME** button to initiate the *Setup* mode.

**D.** When the "PROGRAM DEVICE" screen is displayed, press one of the buttons on either side of the **ACQUIRE** option to begin the acquire function.

The display provides navigation instructions that apply throughout the *Setup* mode process.

PROGRAM DEVICE  
BASIC SETUP  
VIEW TSID  
SET RFID  
RF CHANNEL  
ACQUIRE  
PAGE 1/1

Use < / > to  
navigate. At any  
time, press and  
hold HOME to  
exit. Press >  
to continue.

PAGE 1/1

**E.** As instructed, press the **>** button to continue. The following screens display the acquire sequence, which will add the remote to the network.

The process to  
add this node  
to your network  
may take up to  
90 seconds.  
Press > to  
Continue.

PAGE 1/1

Please wait for  
the add process  
to complete.

ADD ACTIVE

PAGE 1/1

Success!  
You have added  
this remote as  
a new node to  
Your RF network.

Press > to  
continue

PAGE 1/1

**F.** Press **HOME** twice to exit the *Setup* mode. The following screen appears on the remote. Be sure to make a record of the CEN-RFGW-EX IP address.

CRESTRON  
NO PROJECT  
LOADED

**GW IP INFO:**  
172.030.144.037

**G.** On the gateway, press the **ACQUIRE** button again to exit the *Acquire* mode. The associated LED goes out.

If you wish to reenter the *Setup* mode, press and hold the **CLR** and **ENT** buttons simultaneously.

Refer to the latest version of the MLX-2 Operations Guide (Doc. 6739) for additional setup options. The manual is available from the Crestron website ([www.crestron.com/manuals](http://www.crestron.com/manuals)).

### 3 Factory Reset Procedure

If it becomes necessary to perform a factory reset, such as when trying to acquire the MLX-2 to a different network, do the following:

1. Remove one of the batteries.
2. Press and release any button.
3. Reinsert the battery - "INITIALIZING REMOTE CONTROL" appears on the screen.
4. When the message goes away, simultaneously press and hold the **0** (zero) and **OK** buttons.
5. Once the "INITIALIZING REMOTE CONTROL" message appears again, release the buttons and wait for the setup screens.

The factory reset procedure resets all *Setup* mode options back to their default values.

### 4 Load the VisionTools® Pro-e Project for the MLX-2

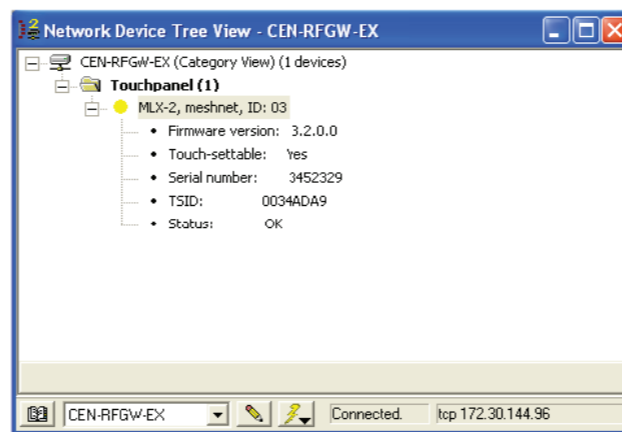
There are several methods that can be used to load the compiled output from VisionTools Pro-e (VT Pro-e) to the gateway. Two methods given here use Crestron Toolbox™. A third method uses VT Pro-e.

The project is stored in the gateway – the individual pages are sent to the remote as needed.

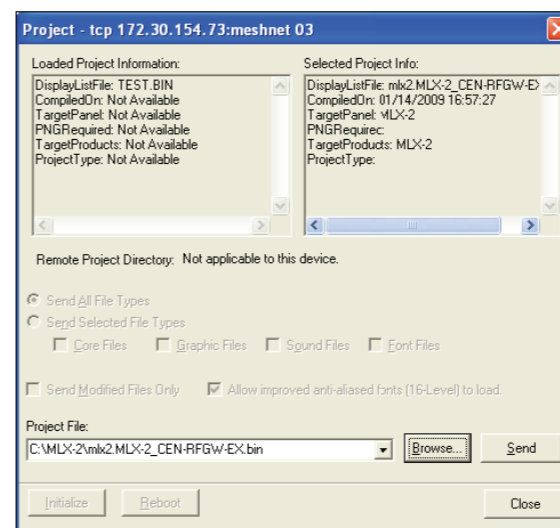
**NOTE:** If the gateway was turned off or otherwise lost power since acquiring the remote, make certain gateway power is on and press any button on the remote, once, to re-establish communication.

#### A. Method 1: Loading Projects via Network Tree

Open Toolbox, and from the **Tools** menu, select the **Network Device Tree View**. Enter the IP address of the gateway, noted in step 2 on page 1, to connect to the gateway. The resulting screen will be similar to the following illustration.



1. To load the project, right-click on the MLX-2 remote in the tree view, go to **Functions** and select **Project**. A screen similar to the one to the right is displayed.
2. Click on the **Browse** button to locate and select the project .BIN file.

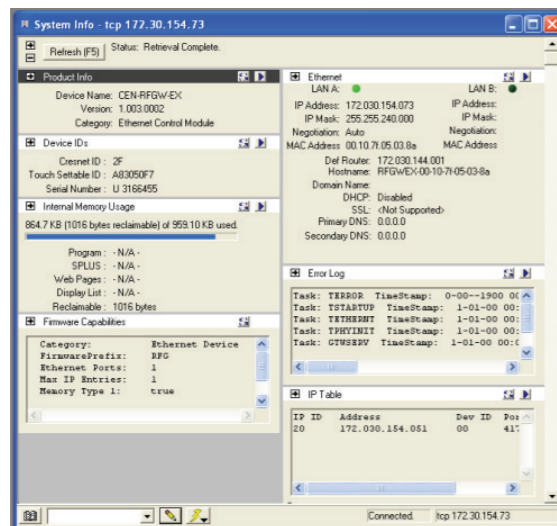


3. Select the file and press **Open**, then press **Send** in the “Project” window to load the file to the gateway and assign it to the remote.

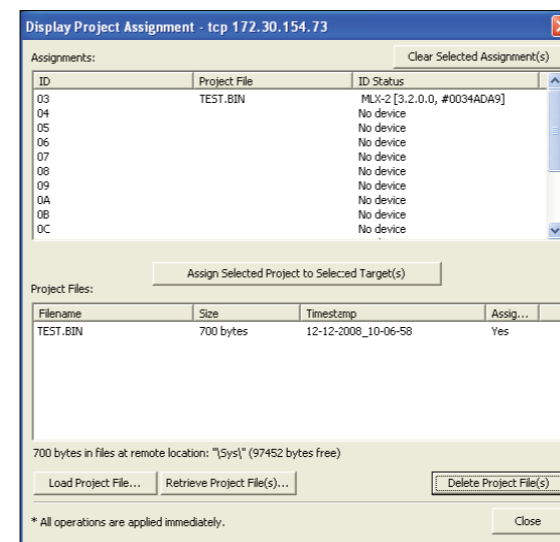
The project is now loaded. If desired, you may exit Toolbox.

#### B. Method 2: Loading Projects via System Info

Open Crestron Toolbox and from the **Tools** menu, select the **System Info** tool. (Refer to the illustration below.) Enter the IP address of the gateway, noted in step 2 on page 1, to connect to the gateway.



1. From the Toolbox **Functions** menu, select **Display Project Assignment**. (Refer to the illustration to the right).
2. Click on **Load Project File**, locate and select the project .BIN file, and click the **Open** button. This loads the project to the CEN-RFGW-EX.
3. Click on the loaded project in the **Project File** (bottom) window.
4. Click on the target ID in the **Assignments** (top) window.
5. Click on **Assign Selected Project to Selected Target(s)**.



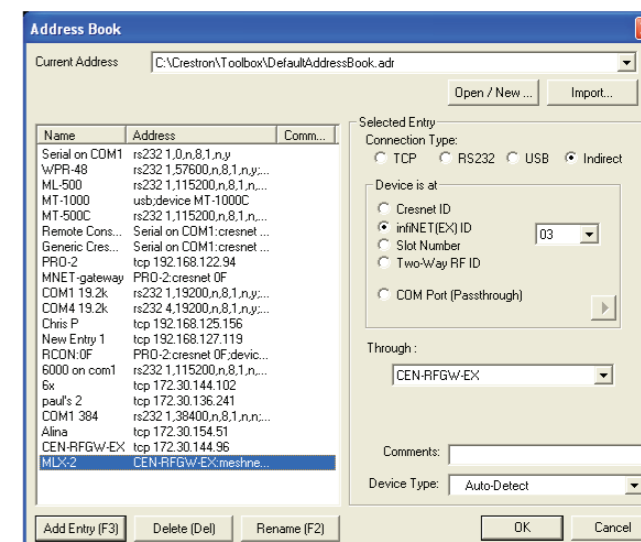
The project is now loaded and assigned to your remote. If desired, you may exit Toolbox.

#### C. Method 3: Loading Projects via VT Pro-e

In VT Pro-e, when the project is ready to be loaded to the CEN-RFGW-EX for the MLX-2, add an Address Book entry for the MLX-2.

1. For the **Connection Type** chose **Indirect**.
2. For **Device is at**, click **infiNET(EX) ID** and select the number from the drop-down list.
3. In the **Through** drop-down box, choose the **CEN-RFGW-EX** from your existing Address Book entries.

Using this new address, load the project in the usual manner.



## Free Manuals Download Website

<http://myh66.com>

<http://usermanuals.us>

<http://www.somanuals.com>

<http://www.4manuals.cc>

<http://www.manual-lib.com>

<http://www.404manual.com>

<http://www.luxmanual.com>

<http://aubethermostatmanual.com>

Golf course search by state

<http://golfingnear.com>

Email search by domain

<http://emailbydomain.com>

Auto manuals search

<http://auto.somanuals.com>

TV manuals search

<http://tv.somanuals.com>