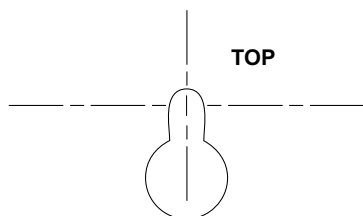
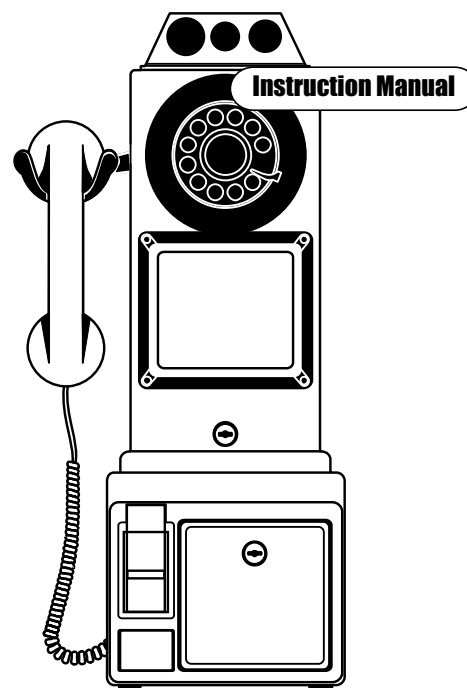
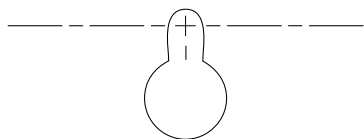


**CROSLLEY****CR56****1950's Classic Pay Phone****KEY HOLE A**

**USE THIS TEMPLATE  
TO DETERMINE THE POSITION OF  
TELEPHONE ON WALL,  
AND WHERE TO LOCATE  
SCREW HOLES.**

**REMOVE TEMPLATE FROM  
WALL BEFORE INSERTING  
PLASTIC ANCHORS OR SCREWS**

**USE ONLY FOR WALL  
INSTALLATION OF TELEPHONE SET**

**KEY HOLE B**

## IMPORTANT SAFETY INSTRUCTIONS

When using your telephone equipment, basic safety precautions, should always be followed to reduce the risk of fire, electric shock and injury to persons, including the following:

1. Read and understand all instructions.
2. Follow all warnings and instructions marked on the product.
3. Unplug this product from the wall outlet before cleaning. Do not use liquid cleaners or aerosol cleaners. Use a damp cloth for cleaning.
4. Do not use this product near water, for example, near a bathtub, wash bowl, kitchen sink, or laundry tub, in a wet basement, or near a swimming pool.
5. Do not place this product on an unstable cart, stand, or table. The product may fall, causing serious damage to the product.
6. Slots and openings in the cabinet and back or bottom are provided for ventilation, to protect it from overheating, these openings must not be blocked or covered. The openings should never be blocked by placing the product on the bed, sofa, rug, or other similar surface. This product should never be placed near or over a radiator or heat register. This product should not be placed in a built-in installation unless proper ventilation is provided.
7. This product should be operated only from the type of power source indicated on the marking label. If you are not sure of the type of power supply to your home, consult your dealer or local power company.
8. Do not allow anything to rest on the power cord. Do not place this product where the cord will be abused by persons walking on it.
9. Some telephones require AC power from the outlet. Do not overload wall outlets or extension cords as this can result in the risk of fire or electric shock.
10. Never push objects of any kind into the product through cabinet slots as they may touch dangerous voltage points or short out parts that could result in a risk of fire or electric shock. Never spill liquid of any kind on the product.
11. To reduce the risk of electric shock, do not disassemble this product, but take it to a qualified serviceman if service or repair work is required. Opening or removing covers may expose you to dangerous voltages or other risks. Incorrect reassembly can cause electric shock when the appliance is subsequently used.
12. Unplug this product from the wall outlet and refer servicing to qualified service personnel under the following conditions:
  - A. When the power supply cord or plug is damaged or frayed.
  - B. If liquid has been spilled on the product.
  - C. If the product has been exposed to rain or water.
  - D. If the product does not operate normally by following the operating Instructions, adjust only those controls that are covered by the operating instructions. Improper adjustment of other controls may result in damage and will often require extensive work by a qualify technician to restore the product to normal operation.
  - E. If the product has been dropped or the cabinet has been damaged.
  - F. If the product exhibits a distinct change in performance.
13. Avoid using a telephone (other than a cordless type) during an electrical storm. There may be a remote risk of electric shock from lightning.
14. Do not use the telephone to report a gas leak in the vicinity of the leak.

**SAVE THESE INSTRUCTIONS**

## WARRANTY

Crosley Radio Products are warranted against defects in material and workmanship for a period of 90 days beginning from the date of sale to the original purchaser.

Should the unit fail under normal usage during the 90 day warranty period, a request for RETURN AUTHORIZATION (R.A.) must be made by the original customer before returning the unit. Call Crosley Radio customer service for Return Authorization at (502) 583-4246 from 9 AM to 5 PM (EST) Monday to Friday.

Upon receiving the RETURN AUTHORIZATION number from the Customer Service Department, properly pack your unit in its original packaging. Include any adapters, parts, & accessories which were originally provided with the product, along with a check or money order for \$19.95 made out to Crosley Radio to cover the handling and return postage. Display the R.A. # on the outside of the carton and ship PREPAID via standard UPS or its equivalent.

**CROSLLEY  
RADIO**

ATTN: RETURNS DEPT  
2001 PRODUCTION DRIVE  
BAY 2 & 3  
LOUISVILLE, KY 40299

CROSLLEY RADIO assumes no responsibility for units sent without prior Return Authorization.

The purchaser's bill of sale is the only proof of warranty entitlement and must accompany the unit.

This warranty does not cover damage due to acts of nature, accident, misuse, abuse, negligence, commercial use or modification of, or to any part of the product. This warranty does not cover damage due to improper operation or maintenance, connection to improper voltage supply, or attempted repair by anyone other than a facility authorized by Crosley Radio to service the product. This warranty does not cover products sold AS IS or consumables (such as fuses or batteries). This warranty is valid only in the United States.

This warranty gives the purchaser specified legal rights in addition to any rights which may vary from state to state.

In accordance with the "Moss-Magnuson Warranty Act" of July 10, 1975, this is termed a "limited warranty" which in no way compromises Crosley Radio, high standards of Quality and Workmanship.

## SET UP DIAL MODE

Locate the DIAL MODE switch on the rear of the telephone body. Slide the switch to TONE unless you have Dial-Pulse (Rotary) telephone service in your area in which case, slide the switch to the PULSE position.

## RINGER CONTROL

The RINGER CONTROL switch on the rear of the telephone body allows you to turn the ringer OFF or set it to ring at either NORMAL or HIGH volume. You can still make or receive calls with the ringer in OFF position, however, you will not hear the incoming ring.

## RECEIVER VOLUME

The RECEIVER VOLUME CONTROL switch, located on the rear of the telephone body, allows you to adjust the volume of the receiver earphone from LO, MED and HI.

## HANDSET CORD

To assemble, insert the end of the handset cord into the HANDSET CORD JACK located on the left side of the telephone body.

## INSTALLATION

### MODULAR WALL JACK

To install the telephone directly on a modular wall jack :

1. Connect the 15 inch line cord to the LINE CORD jack on rear of telephone body.
2. Tuck the line cord into the channel on the back of the phone.
3. Peel and stick the rubber pads on the back side of the phone in the 4 corners.
4. Hold the telephone body up next to the modular jack and plug the line cord into this jack.
5. Tuck the excess line cord into the recess provided on the back of the phone.
6. Line up the mounting holes of the telephone body with the mounting studs (screw heads) on the modular jack or wall.
7. Push the telephone body against the wall jack and gently pull down.

### WALL

If you are not mounting directly onto a modular wall jack, proceed as follows :

1. Install the 7 foot line cord into the LINE CORD jack on the back of the telephone. If the desired location is farther than 7 foot from a wall jack, you will have to obtain a longer line cord available at most hardware stores.
2. Place the provided TEMPLATE against the wall in the position desired.
3. Mark the wall by poking either a pen or pencil through the indicated spots on the template.
4. If there is no stud at this location, it will be necessary to install the provided wall anchors. Drill a small pilot hole at the marked locations. Tap the anchors into the holes. Then insert screws, but DO NOT TIGHTEN. Leave the screw heads protruding about 1/4 inch.
5. If there is a stud at this location, simply install the two screws into the stud. REMEMBER, leave screw head protruding.
6. Telephone is then mounted according to procedure detailed in MOUNTING TO MODULAR PLUG.

**NOTE :** If you encounter difficulty fitting the telephone body onto the screws, or the telephone wobbles when installed, either tighten or loosen the screws to adjust.

### TABLE

1. Connect 7 foot line cord to LINE CORD jack on the rear of the telephone body.
2. Plug free end of line cord into nearest modular telephone jack.

### MAKING AND ANSWERING CALLS

To get a dial tone or answer an incoming call, lift the handset.  
To hang up, either replace the handset or simply press down the HANDSET CRADLE.

## REDIAL

The last number dialed is automatically stored in the phone. To redial the last number, lift the handset and press the REDIAL (coin release) button.

## COINBOX

Coins can be deposited into the COIN SLOTS located on the top of the telephone body. The coins will ring a bell and drop into the coin box. The coinbox may be opened by inserting the key and rotating.

## TROUBLESHOOTING

If you experience problems with your telephone, try the following suggestions:

### NO DIAL TONE

1. Make sure that all plugs are connected properly. Check the connections at the wall jack, the telephone body and the handset.
2. Try another modular jack within your home which you know to be working properly.

### CALLS CANNOT BE DIALED OR DIALED SLOWLY

Check to make sure that the DIAL MODE switch is in the correct position for the type of service available in your area.

### TELEPHONE DOES NOT RING

Check that RINGER CONTROL switch is not set to OFF.

If there are several telephones connected to the same line, try disconnecting some of the other telephones. Having too many telephones connected to the same line can cause low ringer volume or poor sound quality during calls.

### CARE AND MAINTENANCE

Avoid rough treatment to your telephone. Do not drop the handset and always replace it gently onto the cradle.

Clean only with a cloth slightly dampened with water only. Do not use detergents, waxes, solvents, sprays, alcohols or excessive water.

## PARTS INCLUDED

Your new telephone includes the following items:

- |                       |   |
|-----------------------|---|
| 1 - Telephone handset | 2 - Screws with wall anchors                      |
| 1 - Handset coil cord | 4 - Rubber spacer pads.                           |
| 1 - Telephone body    | 2 - Tapping screw                                 |
| 1 - 7 Foot line cord  | 1 - Template (See above picture and instructions) |
| 1 - 15 Inch line cord | 1 - Key   |

## TO INSTALL WALL ANCHORS

If the location you have chosen to mount your telephone is a hollow wall without any beams you will have to use the included wall anchors.

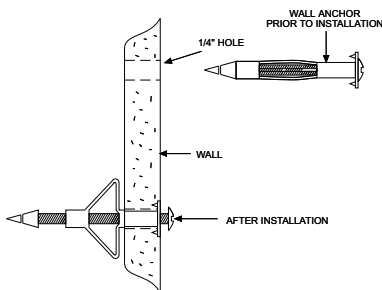
To install, place the template against the wall where you wish to place your telephone. Mark the wall at the location of the two + on the template by pushing a pen or pencil through the template. Drill a 1/4" hole at each mark.

With a Phillips screwdriver, begin tightening the screw by turning it clockwise. Stop turning when you feel firm resistance.

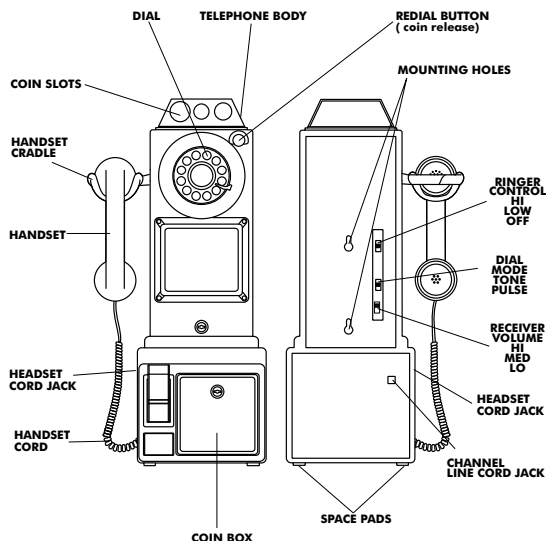
Turn the screw counter clockwise until the screw head is about 1/4" out of the wall.

Install the 7 foot line cord at back of the telephone. Adjust the switches to your preference. Position the line cord through the slot on the bottom of the cabinet. Line up the holes with the two screws. Place the telephone onto these two screws and gently pull down.

This may require a little fine tuning until the phone is seated securely.



## LOCATION OF PARTS



## Consumer Information:

- a) This equipment complies with Part 68 of the FCC rules and the requirements adopted by the ACTA. On the bottom of this equipment is a label that contains, among other information, a product identifier in the format US:KE4TE09B88. If requested, this number must be provided to the telephone company.
- b) applicable certification jacks Universal Service Order Codes (USOC) for the equipment is provided (i.e., RJ11C) in the packaging with each piece of approved terminal equipment.
- c) A plug and jack used to connect this equipment to the premises wiring and telephone network must comply with the applicable FCC Part 68 rules and requirements adopted by the ACTA. A crumpling telephone cord and modular plug is provided with this product. It is designed to be connected to a compatible modular jack that is also compliant. See installation instructions for details.
- d) The REN is used to determine the number of devices that may be connected to a telephone line. Excessive RENs on a telephone line may result in the devices not ringing in response to an incoming call. In most but not all areas, the sum of RENs should not exceed five (5.0). To be certain of the number of devices that may be connected to a line, as determined by the total RENs, contact the local telephone company. (For products approved after July 23, 2001, the REN for this product is part of the product identifier that has the format US:KE4TE09B88. The digits represented by ## are the REN without a decimal point (e.g., 03 is a REN of 0.3). For earlier products, the REN is separately shown on the label.)
- e) If this equipment **CRS6** causes harm to the telephone network, the telephone company will notify you in advance that temporary discontinuance of service may be required. But if advance notice isn't practical, the telephone company will notify the customer as soon as possible. Also, you will be advised of your right to file a complaint with the FCC if you believe it is necessary.
- f) The telephone company may make changes in its facilities, equipment, operations or procedures that could affect the operation of the equipment. If this happens the telephone company will provide advance notice in order for you make necessary modifications to maintain uninterrupted service.
- g) Should you experience trouble with this equipment, please contact **(Modern Marketing Concepts, 1220E Oak Street, Louisville, Kentucky 40204, Tel:502/583-4246)** for repair or warranty information. If the equipment is causing harm to the telephone network, the telephone company may request that you disconnect the equipment until the problem is resolved.
- h) Please follow instructions for repairing if any (e.g. battery replacement section); otherwise do not alternate or repair any parts of device except specified.
- i) Connection to party line service is subject to state tariffs. Contact the state public utility commission, public service commission or corporation commission for information.
- j) **NOTICE:** If your home has specially wired alarm equipment connected to the telephone line, ensure the installation of this (equipment ID) does not disable your alarm equipment. If you have questions about what will disable alarm equipment, consult your telephone company or a qualified installer.
- k) This equipment is hearing aid compatible.

**NOTICE:** According to telephone company reports, AC electrical surges, typically resulting from lightning strikes, are very destructive to telephone equipment connected to AC power source. To minimize damage from these types of surges, a surge arrester is recommended.

## INSTRUCTION TO USE FCC REGISTRATION INFORMATION

This equipment complies with Part 68 of the FCC rules. On the lower side of the equipment is a label that contains, among other information, the FCC registration number and the Ringer Equivalence Number (REN) for this equipment. If requested, provide this information to your telephone company.

The REN is useful to determine the quantity of devices you may connect to your telephone line. Excessive REN's on the telephone line may result in the devices not ringing in response to an incoming call. In most areas, but not all areas, the sum of the REN's should not exceed five (5.0). To be certain of the number of devices you may connect to you lines, as determined by the REN, you should call your local telephone company to determine the maximum REN for your calling area.

If your telephone equipment causes harm to the telephone network, the telephone company will notify you in advance that temporary discontinuance of service may be required. But if advance notice is not practical, the telephone company will notify the customer as soon as possible. Also you will be advised of your right to file a complaint with the FCC if you believe it is necessary.

## Free Manuals Download Website

<http://myh66.com>

<http://usermanuals.us>

<http://www.somanuals.com>

<http://www.4manuals.cc>

<http://www.manual-lib.com>

<http://www.404manual.com>

<http://www.luxmanual.com>

<http://aubethermostatmanual.com>

Golf course search by state

<http://golfingnear.com>

Email search by domain

<http://emailbydomain.com>

Auto manuals search

<http://auto.somanuals.com>

TV manuals search

<http://tv.somanuals.com>