

# Cuisinart® INSTRUCTION BOOKLET



Cuisinart® CleanWater™  
Countertop Filtration System

WCH-950C

For your safety and continued enjoyment of this product, always read the instruction book carefully before using.

Download from [Www.Somanuals.com](http://www.Somanuals.com). All Manuals Search And Download.

# IMPORTANT SAFEGUARDS

When using an electrical appliance, basic precautions should always be followed to reduce the risk of fire, electric shock, and personal injury, including the following:

1. Use this appliance only as described in this manual. Other uses not recommended may cause fire, electric shock or personal injury.
2. This product is intended for household use only.
3. To protect against electric shock, do not immerse unit, plug or cord in water or spray with liquids.
4. Close supervision is necessary when any appliance is used by or near children.
5. Unplug from the outlet when not in use or when moving from one location to another, and before cleaning.
6. To disconnect the appliance, grip the plug and pull it from the wall outlet. Never pull by the cord.
7. Do not operate the appliance in the presence of explosive and/or flammable fumes.
8. Do not place the appliance or any of its parts near an open flame, cooking or other heating appliance.
9. Do not operate the appliance with a damaged cord or plug, if the product malfunctions, or if it is dropped or damaged in any manner.
10. The use of attachments not recommended by the manufacturer may be hazardous.
11. Place the unit on a dry level surface.
12. Do not operate if the housing is removed or damaged.
13. A loose fit between the AC outlet (receptacle) and plug may cause overheating and a distortion of the plug. Contact a qualified electrician to replace loose or worn outlet.
14. This appliance is designed to be freestanding only, and should not be recessed or built in (fully recessed).
15. Locate the unit away from direct sunlight and sources of heat (stove, heater, radiator, etc.). Direct sunlight will affect/alter the outside colour of the appliance.
16. Do not use with water that is microbiologically unsafe or of unknown

quality without adequate disinfection before or after the system. Individuals requiring water of specific microbiological purity should consult their physician.

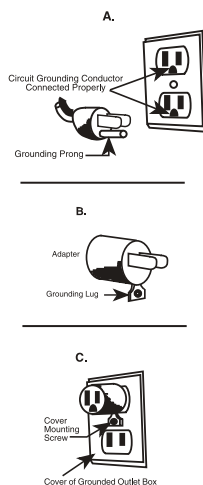
**NOTE:** The system and installation of this product needs to comply with state and local laws and regulations.

**WARNING:** To reduce the risk of fire, electric shock or personal injury, unplug or disconnect the appliance from the power supply before servicing.

## SAVE THESE INSTRUCTIONS FOR HOUSEHOLD USE ONLY

### SPECIAL CORD SET INSTRUCTIONS

For your protection, this unit is equipped with a 3-conductor cordset that has a molded 3-prong grounding-type plug, and should be used in combination with a properly connected grounding-type outlet as shown in figure A. If a grounding-type outlet is not available, an adapter, shown in Figure B, may be used with a 2-slot wall outlet can be used with a 3-prong plug. As shown in Figure C, the adapter must be grounded by attaching its grounding lug under the screw of the outlet cover plate.



**NOTE:** Do not remove the grounding prong.

**CAUTION:** Before using an adapter, it must be determined that the outlet cover plate screw is properly grounded. If in doubt, consult a licensed electrician. Never use an adapter unless you are sure it is properly grounded.

**NOTE:** Use of an adapter is not permitted in Canada.

# CONTENTS

Important Safeguards . . . . .	2
Special Cord Set Instructions . . . . .	2
Introduction . . . . .	3
Parts and Features . . . . .	3
Before First Use . . . . .	4
Operating Instructions . . . . .	4
Tips and Hints . . . . .	5
Cleaning and Care . . . . .	5
Storing the Unit . . . . .	6
Technical Specifications . . . . .	6
Performance Data Sheet . . . . .	7
Warranty . . . . .	8

## INTRODUCTION

Pour yourself a glass of fresh, clean, filtered water for a refreshing drink without opening the refrigerator or a bottle.

Your CleanWater™ Countertop Filtration System is Cuisinart at its most convenient. Drink healthy!

## PARTS AND FEATURES

- 12-Week Filter Timer**  
Lets you know when to change your water filter.
- Cover**  
Flip-top lid for easy filling.
- Unfiltered/Upper Water Tank**
- Filtered/Lower Water Tank**
- On/Off Power Button**  
Press to power on. This will activate the chilling and heating functions.
- Hot Water Button with Child Lock**  
Press to dispense hot water.
- Room/Ambient Water Button**  
Press to dispense room temperature water.
- Cold Water Button**  
Press to dispense chilled water.
- Temperature Indicator Lights**  
Red/Blue LEDs light up when water has reached hot/cold temperatures.

## 10. Spigots

### 11. Brushed Stainless Steel Base

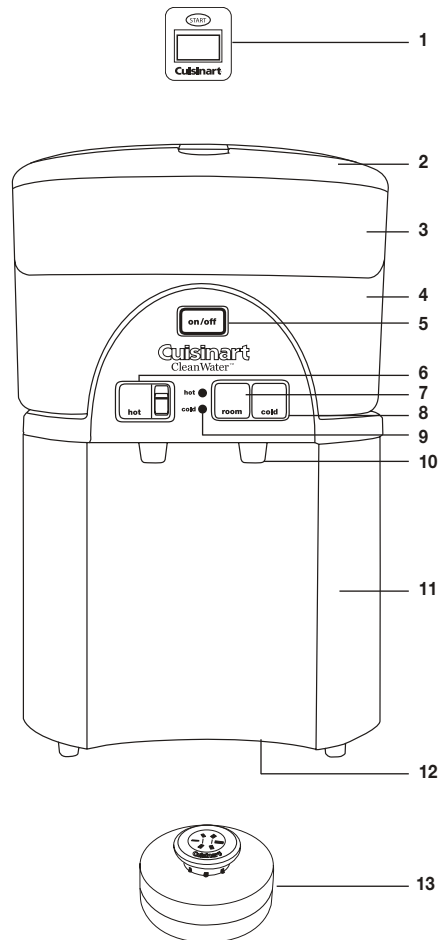
Durable stainless steel construction complements any décor.

### 12. Drainage Plugs (not shown)

Two removable white plastic plugs are located on bottom of unit.

### 13. Replacement Water Filter (Model GF-80C)

The Cuisinart water filter has an optimum filter life of 3 to 4 months or 80 gallons (302 L).



## BEFORE FIRST USE

Before using your Cuisinart® CleanWater™ Countertop Filtration System for the first time, it is recommended that the unit be flushed through with fresh water. Please be sure to read the following instructions before flushing your water dispenser.

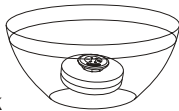
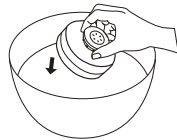
**NOTE:** Do NOT plug the unit in or install the filter yet.

1. Remove your Cuisinart® CleanWater™ Countertop Filtration System carefully from the box. You may wish to store the packaging for future use.
2. Position the unit on a stable flat surface, close to a main power outlet, not in direct sunlight and out of the reach of children.
3. Make sure that there is sufficient space around the water dispenser to allow the heat extracted during the chilling process to dissipate. Allow at least 3" (6 cm) of space around the sides and rear of the unit for air circulation.

## OPERATING INSTRUCTIONS

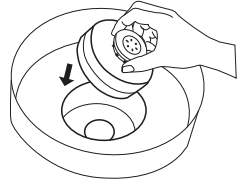
### Installing the Water Filter

1. Remove the water filter from its packaging (it is normal for the filter to appear moist during storage). **DO NOT WASH FILTER ELEMENT WITH SOAP AND WATER.**
2. Place water filter in bowl in upright position.
3. Add enough cold water to ensure that filter is fully submerged when pushed down. Hold filter upright, under water, and gently agitate it for 1 or 2 minutes or until you stop seeing bubbles rising to surface. Continue to soak filter for at least 15 minutes.  
**NOTE:** Filter may not completely sink to the bottom.
4. While the filter is soaking, remove the unfiltered/upper water tank and filtered/lower water tank. Wash both tanks and plastic lid in mild, soapy water, and rinse.

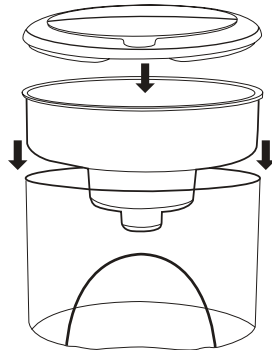


5. When filter is thoroughly soaked, lift it from bowl and allow water to drain.

**NOTE:** The filter contains a small amount of loose carbon dust, which may make water appear dark during soaking – once the preparation process is complete, dust will be rinsed out of filter.



6. Insert the water filter into the upper water tank and push firmly into place.
7. Hold the upper water tank with the filter in it under cold running tap water for 15 seconds to flush.
8. Let water drain from water tank.
9. Fit the unfiltered/upper water tank onto the filtered/lower water tank and place cover on top. **NOTE:** The indent on the upper water tank must face to the back of unit when in place.
10. Place the reassembled tanks on the base.



### Setting Up Your Cuisinart CleanWater™ Countertop Filtration System

1. Lift the flip top lid, and using a clean pitcher, pour cold tap water into the unfiltered/upper water tank until full.  
**NOTE:** Only cold tap water is to be poured into the unit.
2. Allow approximately 15 minutes for water to filter into the filtered/lower water tank.  
**NOTE:** Tank must be at least ½ full before proceeding to Step #3.

3. To allow internal hot and cold water tanks to fill, place glass under spigot and press and hold both Cold and Hot buttons until water flows steadily (about 1 minute). **NOTE:** Until air is fully displaced by water, water flow will be a little erratic.
4. Close the lid.
5. Plug the unit into an electrical outlet. Press the On/Off power switch on the control panel to turn on. The blue light around the power switch indicates the unit is on and the cold and hot features are activated.
6. Dispense 16 ounces (475 ml) of room temperature water to remove any unfiltered water.
7. After about 15 minutes the red hot water indicator will light up. After approximately 1 hour the blue cold water indicator will light up signaling the water has chilled. Your Cuisinart™ CleanWater™ Countertop Filtration System is now ready for use.

**NOTE:** On subsequent fill-ups, unit may take up to 30 minutes to chill and 10 minutes to heat.

### Using the Filter Timer

It is important to change your water filter regularly to enjoy the full benefits of good tasting filtered water. The filter timer automatically reminds you when your water filter needs to be changed. It has a life of 3 to 4 months, or 80 gallons (302 L).

Once the filter is in place and unit is assembled, start the filter timer as follows:

1. On the cover, there is a filter timer that lets you know when to replace the filter.
2. Tear off the slip that insulates the battery. Peel off "Filtering" sticker from filter timer screen.
3. Press and hold the Start button until the word "Filtering" is displayed (approximately 3 seconds).
4. In 12 weeks, the word "REPLACE" will appear. We recommend replacing the filter with a new Cuisinart® Water Filter within the following 2 weeks, depending on usage. **NOTE:** Only the Cuisinart Replacement Filter (see next page) can be used with this unit.

5. Once you replace the filter, reset the timer by pressing the Start button. **NOTE:** If you do not replace the filter and press and hold Start button for 3 seconds, the timer will automatically shut off for power save and no display will be shown. You can press and hold Start button for 3 seconds anytime to reset the timer if needed. If you press Start button for more than 5 seconds the timer will automatically shut off for power save.

## TIPS AND HINTS

- Drinking 4 to 8 glasses of water each day is healthy! Your countertop chiller makes it easy.
- Regular use of clean, filtered water in your automatic coffeemaker means less frequent decalcification treatments.
- Use filtered water in your iron to reduce mineral build-up.
- Treat your pets to clean, filtered water.
- Clean, filtered water makes tea and instant soup or coffee taste better.

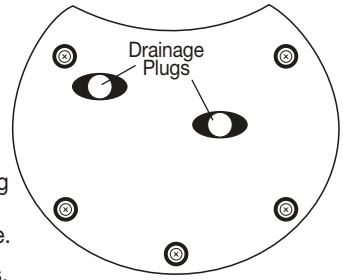
## CLEANING AND CARE

**CAUTION:** To prevent personal injury or electric shock, always unplug your Cuisinart® CleanWater™ Countertop Filtration System from outlet before cleaning. Do not immerse base in water or other liquid.

1. Turn the unit off and unplug it from outlet.
2. Remove the filter and place it in a bowl.
3. Lift upper water tank and let it drain into lower tank, and set it aside. Then lift lower tank off base and empty. Careful, a full tank can be very heavy!
4. Clean the water tanks and the cover with warm soapy water.
5. The base is not immersible. Simply wipe it clean with a damp cloth.
6. Dry thoroughly when clean.

## STORING THE UNIT

1. Turn the unit off and unplug it from outlet.
2. Remove empty water tanks, filter and cover.
3. Allow hot water to cool, then bring base to sink.
4. Drain internal reservoir by tilting unit slightly and removing the 2 white plastic drainage plugs. Plugs are tightly inserted and must be gently, but firmly, worked to remove.
5. When water has completely drained, replace plugs, tanks, filter and cover.
6. Your Cuisinart CleanWater™ Countertop Filtration System is ready to store.



## TECHNICAL SPECIFICATIONS

<b>Unit:</b> <b>WCH-950C</b>	1 Cuisinart® CleanWater™ Countertop Filtration System
	1 Cuisinart® Water Filter
<b>System Capacity</b>	up to 3-4 months/ 80 gallons/ 302 liters
<b>Maximum Temperature</b>	194°F (90°C)
<b>Minimum Temperature</b>	44.6°F (7°C)
<b>Rated Service Flow</b>	10 gallons / 37.85 liters per day (may vary according to water conditions)



System Tested and Certified by NSF International against NSF/ANSI Standard 53 for the reduction of Benzene, Cadmium, Copper, Mercury, Tetrachloroethylene, Toluene, and Standard 42 for the reduction of Chlorine Taste and Odour.

See Performance Data Sheet for specific test conditions and results.

Claims are calculated based on NSF accepted practice of average percent reduction. The contaminants or other substances removed or reduced by this water treatment device are not necessarily in all users' water. Do not use with water that is microbiologically unsafe or of unknown quality without adequate disinfection before or after the system. Individuals requiring water of specific microbiological purity should consult their physician.

The Cuisinart® CleanWater™ Countertop Filtration System processes approximately 80 gallons/ 302 liters. When the Cuisinart® Water Filter (GF-80C) exceeds filtering capacity, replacement is essential for the product to perform as represented. Replacement filters may be purchased at most retail outlets. The performance of the filter may vary based on local water conditions.

Hot water should not be used with the Cuisinart® Water Filter (GF-80C) as it will affect the filter's performance.

Refer to the Operating Instructions and Cleaning and Care for general unit operation and maintenance requirements. Testing was performed under standard laboratory conditions; actual performance may vary.

# PERFORMANCE DATA SHEET

## PERFORMANCE DATA SHEET FOR MODELS WCH-850C AND WCH-950C

### CONTAMINANT REMOVAL DATA IMPORTANT NOTICE:

Read this Performance Data Sheet and compare the capabilities of this unit with your actual water treatment needs. It is recommended that, before purchasing a water treatment unit, you have your water supply tested to determine your actual water treatment needs.

Performance testing conducted by NSF International. These systems have been tested according to NSF Standard 53 and 42 for reduction of the substances listed below. The concentration of the indicated substances in water entering the system was reduced to a concentration less than or equal to the permissible limit for the water leaving the system, as specified in NSF Standard 53 and Standard 42.

Testing was performed under standard laboratory conditions; actual performance may vary.

			Removal	Removal	Action Level	Hardness	Temp	Inlet	
Substance	Influent Water Avg. (ug/L)	Influent Challenge Concentration (mg/L)	Filter Effluent Max. (ug/L)	Percent Reduction (%)	Max. Permissible Product Water Concentration (mg/L)	CaCO <sub>3</sub> (ppm)	Testing Compart. (°C)	PH	Reduction Requirement
<b>NSF/ANSI Standard 42-Aesthetic Effects</b>									
Chlorine Taste and Odour Reduction	2.0	2.0+/-10%	N/A	97.5%	N.A.	N.A.	20	7.53	≥50
<b>NSF/ANSI Standard 53-Health Effects</b>									
Copper	3150	3.0+/-10%	870	85.0%	1.3	16	20	6.42	N/A
Copper	3100	3.0+/-10%	1000	85.4%	1.3	120	19	8.42	N/A
Mercury	6.2	0.006+/-10%	0.9	92.8%	0.002	22	19	6.45	N/A
Mercury	5.7	0.006+/-10%	1.2	89.9%	0.002	140	20	8.55	N/A
Cadmium	28.8	0.03+/-10%	2.2	96.6%	0.005	18	20	6.59	N/A
Cadmium	300	0.03+/-10%	4.0	92.5%	0.005	120	20	8.44	N/A
Benzene	15	0.015+/-10%	3.4	84.1%	0.005	130	20	7.58	N/A
Toluene	2900	3.0+/-10%	770	89.8%	1	320	20	7.54	N/A
Tetrachloroethylene	14	0.015+/-10%	3	92.5%	0.005	340	21	7.56	N/A

---

# WARRANTY

## LIMITED THREE-YEAR WARRANTY

This warranty supersedes all previous warranties on the Cuisinart® CleanWater™ Countertop Filtration System. This warranty is available to consumers only. You are a consumer if you own a Cuisinart® CleanWater™ Countertop Filtration System that was purchased at retail for personal, family or household use. This warranty is not available to retailers or other commercial purchasers or owners.

We warrant that your Cuisinart® CleanWater™ Countertop Filtration System will be free of defects in material or workmanship under normal home use for three years from the date of original purchase.

For warranty purposes, we would like to suggest that you register your product on-line at [www.cuisinart.ca](http://www.cuisinart.ca) to facilitate verification of the date of original purchase. However, should you not wish to register on-line we recommend the consumer to maintain original receipt indicating proof of purchase. In the event that you do not have proof of purchase date, the purchase date for purposes of this warranty will be the date of manufacture.

When calling our Authorized Service Centre for in warranty service please make reference to your model number and the manufacturing date code. This information can be found in the rating area on the body or underneath the base of your unit. The model number will follow the word Model: WCH950C. The manufacturing date code is a 4 or 5 digit number sometimes followed by a letter. Example, 70630K would designate year, month & day (2007, June 30th).

If your Countertop Filtration System should prove to be defective within the warranty period, we will repair it or, if we think it necessary, replace it. To obtain warranty service, please call our Consumer Service Centre toll-free at 1-800-472-7606 or write to:

Cuisinart Canada  
100 Conair Parkway  
Woodbridge, ON. L4H 0L2

To facilitate the speed and accuracy of your return, please also enclose \$10.00 for shipping and handling of the product. Please also be sure to include a return address, description of the product defect, product serial number, and any other information pertinent to the product's return. Please pay by cheque or money order.

**NOTE:** For added protection and secure handling of any Cuisinart® product that is being returned, we recommend you use a traceable, insured delivery service.

Cuisinart cannot be held responsible for in transit damage or for packages that are not delivered to us. Lost and/or damaged products are not covered under warranty.

Your Cuisinart® CleanWater™ Countertop Filtration System has been manufactured to strict specifications and has been designed for use with the Cuisinart® CleanWater™ Countertop Filtration System authorized accessories and replacement parts for your model.

These warranties expressly exclude any defects or damages caused by accessories, replacement parts or repair service other than those that have been authorized by Cuisinart. These warranties exclude all incidental or consequential damages.

## BEFORE RETURNING YOUR CUISINART® PRODUCT

**Important:** If the nonconforming product is to be serviced by someone other than Cuisinart's Authorized Service Centre, please remind the servicer to call our Consumer Service Centre to ensure that the problem is properly diagnosed, the product serviced with the correct parts, and to ensure that the product is still under warranty.



# Cuisinart®

SAVOR THE GOOD LIFE™



Coffeemakers



Food Processors



Stand Mixers



Rice Cookers



Blenders



Grills

Cuisinart offers an extensive assortment of top quality products to make life in the kitchen easier than ever. Try some of our other countertop appliances and cookware, and Savor the Good Life™.

**[www.cuisinart.ca](http://www.cuisinart.ca)**

©2007 Cuisinart  
Cuisinart® is a registered  
trademark of Cuisinart

100 Conair Parkway  
Woodbridge, ON L4H 0L2  
1-800-472-7607  
Printed in China

07CC25074

Any trademarks or service marks of third parties referred to herein are the trademarks or service marks of their respective owners.

IB-7514-CAN

## Free Manuals Download Website

<http://myh66.com>

<http://usermanuals.us>

<http://www.somanuals.com>

<http://www.4manuals.cc>

<http://www.manual-lib.com>

<http://www.404manual.com>

<http://www.luxmanual.com>

<http://aubethermostatmanual.com>

Golf course search by state

<http://golfingnear.com>

Email search by domain

<http://emailbydomain.com>

Auto manuals search

<http://auto.somanuals.com>

TV manuals search

<http://tv.somanuals.com>