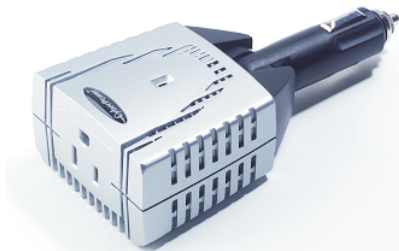




140 Watt AC Mobile Power Inverter User Guide



This guide contains important information that should be regarding safety, operation, maintenance and storage of this product. Before using, please read this guide and your vehicle's battery manufacturer guidelines thoroughly. Failure to do so could result in injury and/or property damage.

Table of Contents

Important Safety Information.....	03
Introduction.....	04
Package Contents.....	04
Product Features.....	05
Operation of Inverter.....	06
Operating and Storage Tips.....	07
Specification.....	08
Troubleshooting.....	08
DC Fuse Replacement.....	10
Product Limited Warranty.....	11

Important Safety Information

Before installing and using the CyberPower CPS140BI Mobile Power Inverter be please read and save these safety instructions.

- Do not operate the CPS140BI(inverter) near flammable materials, fumes or gases.
- Always use the inverter where there is adequate ventilation. Do not block ventilation slots.
- Never immerse the unit in water.
- Proper cooling is essential when operating the inverter. Refrain from placing the inverter near the vehicle's heat vent or in direct sunlight.
- Always turn off the inverter by removing it from the DC accessory socket when not in use.
- Check the warning labels on battery chargers or adapters before connecting them to the inverter. Do not connect battery chargers or adapters displaying or having dangerous voltage warnings.

3

Introduction

Thank you for choosing the CyberPower CPS140BI AC Mobile Power Inverter. To enjoy all the features and benefits of CPS140BI, please read and follow all instructions completely.

CyberPower CPS140BI AC Mobile Power Inverter is a true plug-and-play, cordless and portable source of 110/120 volt AC that converts DC battery power from your vehicle into standard household electricity, allowing you to power most notebook computers, cell phone charger, camcorder, and other household products drawing 140 watts or less of continuous AC power.

Package Contents

This package includes:

- 140 Watt AC Mobile Power Inverter
- Warranty Registration Card
- CPS140BI User Guide

4

Product Features (Model CPS140BI)

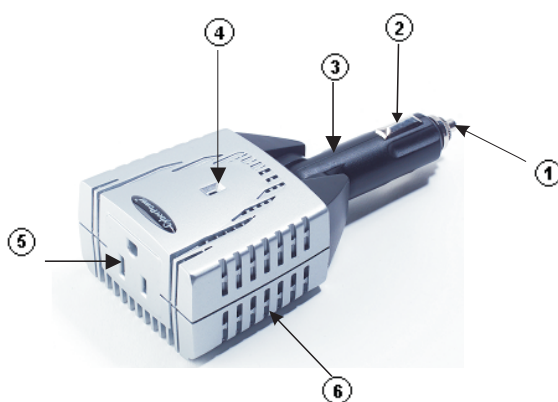


Figure 1. Product Feature

5

Product Features (Model CPS140BI) -continued

1. 12 volt positive (+) contact
2. 12 volt negative (-) spring contact
3. Swiveled power plug adjust to 180 degree
4. Green LED indicator light
5. 120 volt AC outlet accepts two or three prong plug
6. Ventilation slots

Operation of Inverter

1. In your automobile, remove the cigarette lighter from the automobile lighter socket and insert the CPS140BI into your vehicle's lighter socket.
2. Rotate the plug slightly to make sure there is good contact. Please make sure the unit plug is firmly plugged into your vehicle's lighter socket for proper operation.
3. A green LED light on indicates a proper operation and connection.
4. Plug in your AC powered equipment. Ensure your product draws 140 watts (12Vdc) or less of continuous AC power.
5. To avoid discharging the battery, always remove the CPS140BI plug from the lighter socket from your vehicle when not in use.

6





Operating and Storage Tips

Operating Tips

CPS140BI inverter should only be operated in following conditions:

- Dry- Do not allow water or other liquid to come into contact with the inverter.
- Temperature - Surrounding air temperature should be between 32°F-86°F (0°C-30°C) ideally. Keep the inverter away from direct sunlight if possible.
- Air Circulation - Keep inverter's surrounding clear to ensure free air circulation around the unit. Do not place any items on or over the inverter during operation. The unit will shut down if the internal temperature overheated.

Storage Tips

- Adequate storage temperature range is 32°F-104°F(0°C-40°C) Please store and use the inverter in a cool and dry place.
- Avoid Inverter to expose to heating units, direct sunlight, excessive humidity or dampness.

7

Specification

Output Power	140 Watts Continuous
Output Voltage	120 Volts +/- 10%
Output Frequency	60 Hz
Output Waveform	Simulated Sine Wave
Input Voltage	10.8 to 15.8 volts
Low Voltage Shutdown	10.5 volt

Troubleshooting

8

Problem	Possible Cause	Suggested Solutions
No AC output power (Power indicator is not illuminated)	Poor contact with lighter socket	Ensure the inverter adapter is securely plugged into vehicle's lighter socket. Replace the lighter socket if necessary.
	Automotive electrical systems requires ignition to be on.	Turn the vehicle ignition key to the "Accessory" position.
	Car's lighter socket fuse blown	Check the vehicle fuse panel and replace the damaged fuse.
	Over-heating	Allow inverter to cool down. Ensure that there is adequate ventilation around the unit and load is no more than 140 watts for continuous operation.
Short/Long Beep	Vehicle's battery below 10.8 volts.	Unplug the inverter and charge the vehicle battery.
	Your vehicle's battery input voltage is below than 10.8 volt.	Check vehicle's battery and ensure its capacity. Change vehicle's battery if necessary.
	Vehicle's battery input voltage is higher than 15.8 volt.	Check for your vehicle's battery manufacturer guideline.
	Inverter is overload.	Reduce load to 140 watts max to maintain regulation.

9

DC Fuse Replacement

CPS140BI contains a fuse inside in the Lighter Adapter (see Figure 2) to protect the unit against overloading. If the inverter draws more than 140 watts, the internal fuse may be blown to protect the inverter, vehicle battery and the connected equipment. To replace the fuse, please follow the instruction below:

1. Unplug the inverter from the power source.
2. Remove the Contact Screw from the Lighter Adapter.
3. Replace the 15 ampere fuse.
4. Reassemble the fuse, contact pin and contact screw carefully.
5. Ensure all pieces showed in Figure 2 are installed in the sequence shown.

*Note: For in-warranty units, the replacement fuse can be obtained from CyberPower Technical Support. For out-of-warranty units, the replacement 15 ampere fuse can be obtained from most electronic supply retailers.

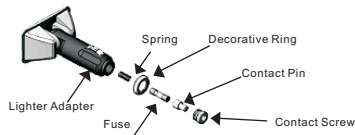


Figure 2. Fuse Replacement

10

Product Limited Warranty

CyberPower warrants this CPS140BI(the Inverter) to be free from defect in material or manufacture for two years. If a defect results in product failure during its normal use, CyberPower's sole responsibility is to repair or replace (as its sole option) the Inverter.

The foregoing Limited Warranty is the consumer's sole and exclusive remedy and excludes any incidental or consequential damages. Some states do not allow the exclusion or limitation of incidental and consequential damages, so certain of the above limitations or exclusions may not apply to you (the Consumer). This limited warranty gives the Consumer specific legal rights and the Consumer may have other rights, which vary from State to State.

To make a Limited Warranty claim:

1. Pack and ship the inverter to CyberPower at 5555 12th Ave. E., Suite 110, Shakopee, Mn55379.
2. Clearly indicate on the outside of the packaging that this is a "WARRANTY RETURN"
3. Clearly include your name and address (a) on the outside packaging and (b) on a sheet of paper enclosed in the box with the Inverter that is being returned.
4. You MUST prepay all shipping costs and you are responsible for packaging and shipment.

11

CyberPower™

Cyber Power Systems, Inc.

5555 12th Avenue East, Suite 110, Shakopee, MN 55379, U.S.A.

TEL: (952) 403-9500

FAX: (952) 403-0009

Toll-Free: (877) 297-6937

E-mail: sales@cyberpowersystems.com

Web: www.cyberpowersystems.com

Entire contents copyright ©2004 Cyber Power Systems, Inc.

All rights reserved. Reproduction in whole or in part without permission is prohibited

K01-BT14000



Free Manuals Download Website

<http://myh66.com>

<http://usermanuals.us>

<http://www.somanuals.com>

<http://www.4manuals.cc>

<http://www.manual-lib.com>

<http://www.404manual.com>

<http://www.luxmanual.com>

<http://aubethermostatmanual.com>

Golf course search by state

<http://golfingnear.com>

Email search by domain

<http://emailbydomain.com>

Auto manuals search

<http://auto.somanuals.com>

TV manuals search

<http://tv.somanuals.com>