

## Mobile Power Pack User Guide



Model No. CP-MBC

### Table of Contents

Introduction . . . . .	2
Package Contents . . . . .	2
Safety Precautions . . . . .	3
Specifications . . . . .	4
Product Components . . . . .	5
Charging the CP-MBC . . . . .	6
Powering Devices . . . . .	8
Troubleshooting . . . . .	10
Radio & TV Interference Statement . . . . .	11
Warranty . . . . .	12

Thank you for purchasing a CyberPower product. To enjoy all the features and benefits of this Mobile Power Pack, please read and follow all installation and operation instructions.

### Introduction

CyberPower Mobile Power Pack (CP-MBC) is a rechargeable Power Pack that is designed for powering mobile devices, iPods®, MP3 players, mobile phones, PDAs and portable gaming systems via the USB Mini-B Cable. CP-MBC is an ideal travel mate and backup battery that supports and powers devices on the go.

#### Features

- Recessed power button prevents accidental start up.
- Auto-shutdown feature protects the CP-MBC from draining.
- High energy-density Lithium-polymer battery.
- Long lasting rechargeable battery with up to 500 cycles.

#### Package Contents

1. Mobile Power Pack ( CP-MBC)
2. 100-240 Volt AC to 5V USB Transformer
3. USB 2.0 Device Cable
4. User Manual

### Safety Precautions

Before using the CP-MBC, please read the following warnings carefully. Use the product according to the procedures described in this manual. **Failure to follow these safety precautions may result in fire, explosion, electrical shock or other dangers.**

1. Do not disassemble this product, or any of its parts.
2. Store between -4 to 140°F (-20 to 60°C). Operate between 32 to 113°F (0 to 45°C).
3. Do not immerse this product in water or other liquids, as such use may result in fire or electrical shock. If water or other liquids enter the battery interior, unplug the product immediately from any attached power source or device.
4. Do not use this product with wet hands. Moisture in or on this product may result in electrical shock.
5. Do not expose this product to direct flame or leave it in an over-heated condition, as the battery may explode.
6. Store this product in a cool and dry environment when not in use.
7. Do not puncture this product. Puncturing the battery may cause the release of harmful substances.
8. It is normal for the CP-MBC to become warm during charging.
9. Keep this product out of the reach of children. Ensure that all users read these warnings and instructions before using.

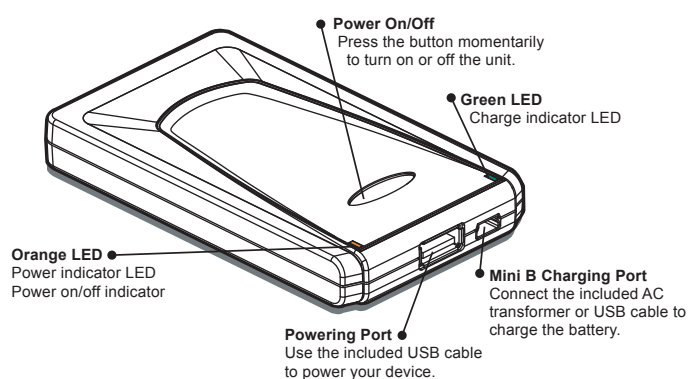
#### Prior to Use

NOTE: Charge the CP-MBC for a full eight (8) hours prior to using for the first time.

### Specifications

Item	Specification
DC Input	
Input Voltage Range	5V
Input Power Source	Charge using included AC transformer or upstream USB port.
DC Output	
On Battery Output Voltage Range	5V +/-5%
On Battery Output Maximum Current	1.2A
On PC USB Port Maximum Current	500mA
On AC Adapter Output Maximum Current	1A
Capacity	6 Watt-hours
Output Power	5 Watt Maximum Continuous Power 6 Watt Peak Power - Short Duration
Powering Indication	Orange LED
Capacity Indication	Green LED
Charge time	Recharges to 100% in 3.5 hours
Size	4.06 x 2.36 x 0.58 in
Weight	3.264 OZ
Environmental	Storage: -4 to 140°F (-20 to 60°C) Operation: 32 to 113°F (0 to 45°C)

### Product Components

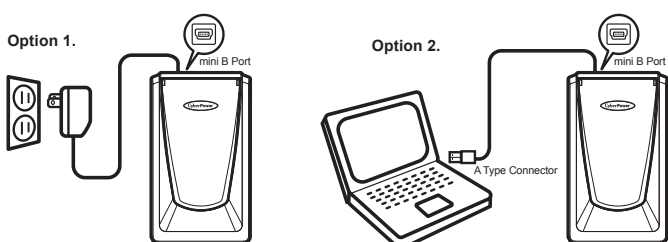


### Charging the CP-MBC

You can charge the CP-MBC using any of following methods:

Option 1- Using the AC Power Adapter: Use the included AC power adapter to charge the CP-MBC. Plug the adapter into a wall outlet and connect the Mini-B port to the CP-MBC.

Option 2- Using Your Notebook or PC: Charge the CP-MBC through your notebook or desktop PC. Use the included USB 2.0 Device cable, connect mini-B port to the CP-MBC and connect A-type port to a Notebook or PC.



### Checking the Charge Status

The charge status of PC-MBC is indicated by the green LED status indicator. If the green LED is flashing, this indicates that the power pack is being charged. See the table below for the level of battery status. Continue charging until the green LED lights up solid and does not flash. This indicates that the power pack is fully charged.

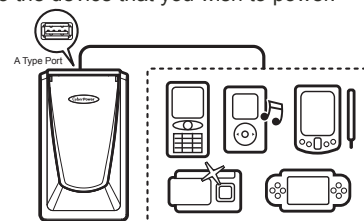
Green LED Status Indication	During Charging
Light	75 ~100%
Flashing 3 sec	50 ~75%
Flashing 2 sec	25 ~50%
Flashing Fast	Below 25%

#### Caution

1. Please charge your CP-MBC the first time for a full 8 hours before regular use.
2. When charging the CP-MBC using the AC Adapter or a PC, do not connect any devices to the type A USB power port. Powering a device while charging the internal battery will result in a longer charge time for the CP-MBC.
3. Do not charge CP-MBC through a USB hub. Other devices connected to the hub may reduce the available power and increase the time required to charge the CP-MBC.

### Powering Device

Use an appropriate USB cable to power devices such as iPods®, MP3 players, mobile phones, PDAs and portable gaming systems. Connect the USB cable to the type A USB powering port on the CP-MBC and the other end of the cable to the device that you wish to power.



#### Turning On the CP-MBC

Press the power on/off button for 1 second. The orange LED will light up indicating that the power pack is ready to power a device.

If the CP-MBC is not being used (charging or discharging) after 5 minutes, the orange LED will automatically turn off. The CP-MBC will switch to sleep mode. To turn the CP-MBC back on, just press the power on/off button again until the orange LED lights up.

### Checking the CP-MBC Power Status

The power status of the CP-MBC Power Pack's available power is indicated by the orange LED indicators. The level of available power is described in the following table:

Orange LED Status Indication	Available Power
Light	75 ~100%
Flashing 3 sec	50 ~75%
Flashing 2 sec	25 ~50%
Flashing Fast	Below 25%
LED off	Fully Depleted

#### Caution

When both orange & green LEDs light up, this indicates that the power consumption of the device is greater than 1.2A current. The CP-MBC is overloaded.

To turn the CP-MBC off, press and hold the power on/off button for 2 seconds.

### Troubleshooting

Problem	Possible Cause	Solution
CP-MBC does not power the device.	1. The CP-MBC may have switched to Auto Sleep Mode. 2. The power of device is over SPEC (5V, 1.2A). 3. The battery is out of power.	1. Press the power on/off button for 1 second to wake the CP-MBC. 2. Check the power specification of the device before charging with the CP-MBC. 3. Charge the CP-MBC using one of the two methods that are described under "Charging the CP-MBC" in this user's manual.
CP-MBC does not charge.	1. Incorrect connection between charger and CP-MBC product. 2. No power source from outlet.	1. Mini B port on the CP-MBC is for charging. 2. Checking the wall outlet.

### Radio & Interference Statement

This equipment has been tested and found to comply within the limits for a Class B digital device, pursuant of Part 15 of the FCC rules. The limits are designed to provide reasonable protection against harmful interference in a residential installation. This equipment generates, uses and can radiate radio frequency energy and if not installed and used in accordance with the instructions, may cause harmful interference to radio communications. There is no guarantee, however, that interference will not occur in a particular installation.

### Warranty

CyberPower warrants this CP-MBC to be free from defect in material or manufacture for 1 year. If a defect results in product failure during its normal use, CyberPower's sole responsibility is to repair or replace (at its sole option) the CP-MBC.

The foregoing 1 Year Limited Warranty is the consumer's sole and exclusive remedy and excludes any incidental or consequential damages. Some States do not allow the exclusion or limitation of incidental and consequential damages, so certain of the above limitations or exclusions may not apply to you (the Consumer). This 1 year limited warranty gives the Consumer specific legal rights and the Consumer may have other rights, which vary from State to State.

To make a 1 year Limited Warranty claim:

1. Pack and ship the CP-MBC with a dated Proof-of-Purchase receipt to CyberPower at 4241 12th Ave E, Suite 400, Shakopee, MN 55379;
2. Clearly indicate on the outside of the packaging that this is a WARRANTY RETURN;
3. Clearly include your name and address on the outside packaging and on a sheet of paper enclosed in the box with the CP-MBC that is being returned.
4. You MUST prepay all shipping costs and you are responsible for packaging and shipment.

CyberPower will inspect and examine the CP-MBC. If the CP-MBC is defective in material or workmanship, CyberPower will repair or replace it and return it to you at CyberPower's expense at the place you have indicated.

## Free Manuals Download Website

<http://myh66.com>

<http://usermanuals.us>

<http://www.somanuals.com>

<http://www.4manuals.cc>

<http://www.manual-lib.com>

<http://www.404manual.com>

<http://www.luxmanual.com>

<http://aubethermostatmanual.com>

Golf course search by state

<http://golfingnear.com>

Email search by domain

<http://emailbydomain.com>

Auto manuals search

<http://auto.somanuals.com>

TV manuals search

<http://tv.somanuals.com>