

# **D-Link DES-1526**

Web-Smart 26-Port Ethernet Switch with  
24 10/100Mbps 802.3af Power Over Ethernet Ports  
&  
2 10/100/1000Mbps Combo Gigabit Ethernet Ports

## **Manual**

First edition

**Building Networks for People**

### **FCC Warning**

This equipment has been tested and found to comply with the limits for a Class A digital device, pursuant to Part 15 of the FCC Rules. These limits are designed to provide reasonable protection against harmful interference when the equipment is operated in a commercial environment. This equipment generates, uses, and can radiate radio frequency energy and, if not installed and used in accordance with this manual, may cause harmful interference to radio communications. Operation of this equipment in a residential area is likely to cause harmful interference in which case the user will be required to correct the interference at his own expense.

### **CE Mark Warning**

This is a Class A product. In a domestic environment, this product may cause radio interference in which case the user may be required to take adequate measures.

### **Warnung!**

Dies ist ein Produkt der Klasse A. Im Wohnbereich kann dieses Produkt Funkstörungen verursachen. In diesem Fall kann vom Benutzer verlangt werden, angemessene Massnahmen zu ergreifen.

### **Precaución!**

Este es un producto de Clase A. En un entorno doméstico, puede causar interferencias de radio, en cuyo case, puede requerirse al usuario para que adopte las medidas adecuadas.

### **Attention!**

Ceci est un produit de classe A. Dans un environnement domestique, ce produit pourrait causer des interférences radio, auquel cas l'utilisateur devrait prendre les mesures adéquates.

### **Attenzione!**

Il presente prodotto appartiene alla classe A. Se utilizzato in ambiente domestico il prodotto può causare interferenze radio, nel cui caso è possibile che l'utente debba assumere provvedimenti adeguati.

### VCCI Warning

この装置は、クラスA情報技術装置です。この装置を家庭環境で使用すると電波妨害を引き起こすことがあります。この場合には使用者が適切な対策を講ずるよう要求されることがあります。

### **BSMI Warning**

#### 警告使用者

這是甲類的資訊產品,在居住的環境中使用時,可能會造成射頻干擾,在這種情況下使用者會被要求採取某些適當的對策

# ***TABLE OF CONTENTS***

---

Table of Contents .....	iii
About This Manual.....	1
Purpose .....	1
Terms/Usage .....	1
Introduction.....	2
Fast Ethernet Technology.....	2
Gigabit Ethernet Technology.....	3
Switching Technology.....	4
VLAN (Virtual Local Area Network).....	5
Power over Ethernet (PoE) .....	6
Features .....	6
Unpacking and Installation.....	8
Unpacking.....	8
Installation .....	8
Installing the Switch on a Desktop.....	9
Installing the Switch on a Rack .....	10
Connecting Network Cables .....	11
AC Power.....	12
Identifying External Components.....	14

Front Panel.....	14
LED Indicator:.....	14
10/100Mbps PoE Ports (Port 1~24):.....	14
1000BASE-T Gigabit Ethernet Ports (Port 25~26): .....	15
mini-GBIC Ports (Port 25F~26F):.....	15
Reset: .....	16
Rear Panel.....	16
Understanding LED Indicators.....	17
System LEDs .....	17
POWER:.....	17
Power Maximum (PWR MAX).....	17
CPU: Management Indicator.....	18
Fast Ethernet PoE Port Status LEDs (Port 1 ~ 24).....	18
Link/ACT: Link/Activity.....	18
100Mbps.....	18
PoE Status.....	18
Gigabit Ethernet Port Status LEDs .....	19
Link/ACT: Link/Activity.....	19
1000Mbps.....	19
100Mbps.....	19

mini-GBIC (Use Combo ports or SFP).....	19
Configuration .....	20
Installing the Web Management Utility.....	20
Discovery List.....	21
Monitor List.....	22
View Trap .....	23
Add Item.....	24
Delete Item .....	24
Device Setting.....	24
Configuration Setting.....	24
Password Change .....	25
Firmware Upgrade.....	26
Web Access .....	26
Toolbar.....	27
File TAB.....	27
View TAB.....	27
Option TAB .....	28
Help TAB .....	28
Configuring the Switch.....	28
Login.....	29

Setup Menu .....	31
Configuring Setup Setting.....	32
Port Settings .....	32
802.1Q VLAN Settings (Virtual Local Area Network).....	34
Trunk Setting .....	37
Mirror Setting .....	38
SNMP Setting.....	39
PoE Setting.....	47
Device Status.....	50
Statistics .....	52
System Setting.....	53
Trap Setting .....	55
Set Password .....	57
Backup Setting .....	58
Reset Setting.....	59
Logout .....	59
Technical Specifications.....	58

## ***ABOUT THIS MANUAL***

---

Congratulations on your purchase of the DES-1526. This Switch integrates 100Mbps Fast Ethernet and 10Mbps Ethernet network capabilities in a highly flexible package. Since this Switch's Port-1 to Port-24 are Power over Ethernet (PoE) ports, it will automatically detect the presence of IEEE 802.3af-compliant devices and will provide power through these PoE ports. The Switch provides up to 15.4Watts per port and can be connected to WLAN access points, IP phones, video cameras, and other PD devices. The Switch will automatically detect the network appliance's requirements, and the Switch will supply the required power current to each appliance.

---

### **Purpose**

---

This manual discusses how to install your DES-1526.

---

### **Terms/Usage**

---

In this manual, the term "Switch" (first letter upper case) refers to your DES-1526 and "switch" (first letter lower case) refers to other Ethernet switches.



## ***INTRODUCTION***

---

This chapter describes the features of the DES-1526 and some background information about Fast Ethernet, Gigabit Ethernet, Switching, VLAN, and Power over Ethernet technologies.

---

### **Fast Ethernet Technology**

---

The growing importance of LANs and the increasing complexity of desktop computing applications are fueling the need for high performance networks. A number of high-speed LAN technologies have been proposed to provide greater bandwidth and improve client/server response times. Among them, 100BASE-T (Fast Ethernet) provides a non-disruptive, smooth evolution from the current 10BASE-T technology. The non-disruptive and smooth evolution nature, and the dominating potential market base, virtually guarantees cost-effective and high performance Fast Ethernet solutions.

100Mbps Fast Ethernet is a standard specified by the IEEE 802.3 LAN committee. It is an extension of the 10Mbps Ethernet standard with the ability to transmit and receive data at 100Mbps, while maintaining the CSMA/CD Ethernet protocol. Since 100Mbps Fast Ethernet is compatible with all other 10Mbps Ethernet environments, it provides a straightforward upgrade and takes advantage of the existing investment in hardware, software, and personnel training.

---

## **Gigabit Ethernet Technology**

---

Gigabit Ethernet is an extension of IEEE 802.3 Ethernet utilizing the same packet structure, format, and support for CSMA/CD protocol, full-duplex, flow control, and management objects, but with a tenfold increase in theoretical throughput over 100Mbps Fast Ethernet and a one hundred-fold increase over 10Mbps Ethernet. Since it is compatible with all 10Mbps and 100Mbps Ethernet environments, Gigabit Ethernet provides a straightforward upgrade without wasting a company's existing investment in hardware, software, and trained personnel. The increased speed and extra bandwidth offered by Gigabit Ethernet are essential to coping with the network bottlenecks that frequently develop as computers and their busses get faster and more users use applications that generate more traffic. Upgrading key components, such as your backbone and servers to Gigabit Ethernet can greatly improve network response times as well as significantly speed up the traffic between your sub-networks. Gigabit Ethernet enables support for video conferencing, complex imaging, and similar data-intensive applications. Likewise, since data transfers occur 10 times faster than Fast Ethernet, servers outfitted with Gigabit Ethernet NIC's are able to perform 10 times the number of operations in the same amount of time. In addition, the phenomenal bandwidth delivered by Gigabit Ethernet is the most cost-effective method to take advantage of today and tomorrow's rapidly improving switching and routing internetworking technologies.

---

## Switching Technology

---

Another approach to pushing beyond the limits of Ethernet technology is the development of switching technology. A switch bridges Ethernet packets at the MAC address level of the Ethernet protocol transmitting among connected Ethernet or Fast Ethernet LAN segments.

Switching is a cost-effective way of increasing the total network capacity available to users on a local area network. A switch increases capacity and decreases network loading by dividing a local area network into different segments, which do not compete with each other for network transmission capacity.

The switch acts as a high-speed selective bridge between the individual segments. The switch, without interfering with any other segments, automatically forwards traffic that needs to go from one segment to another. By doing this the total network capacity is multiplied, while still maintaining the same network cabling and adapter cards.

Switching LAN technology is a marked improvement over the previous generation of network bridges, which were characterized by higher latencies. Routers have also been used to segment local area networks, but the cost of a router, the setup, and maintenance required make routers relatively impractical. Today switches are an ideal solution to most kinds of local area network congestion problems.

---

## VLAN (Virtual Local Area Network)

---

A VLAN is a group of end-stations that are not constrained by their physical location and can communicate as if a common broadcast domain, a LAN. The primary utility of using VLAN is to reduce latency and the need for routers, using faster switching instead. Other VLAN utility includes:

- ◆ **Security:** Security is increased with the reduction of opportunity in eavesdropping on a broadcast network because data will be switched to only those confidential users within the VLAN.
- ◆ **Cost Reduction:** A VLAN can be used to create multiple broadcast domains, thus eliminating the need of expensive routers.
- ◆ **802.1Q VLAN:** The VLAN tagging option is a standard set by the IEEE to facilitate the spanning of VLANs across multiple switches. (Reference: IEEE Std 802.1Q-1998 Virtual Bridged Local Area Networks.)

---

## Power over Ethernet (PoE)

---

Power over Ethernet (PoE) integrates power and data onto one single cabling infrastructure, eliminating the need to have AC power available at all locations.

Power and Data are integrated onto the same cable. Supporting category 5/5e up to 100 Meters, PoE will provide power to PoE compatible devices, such as IP telephones, wireless LAN access points, and IP security cameras.

PoE is already widely adopted in the market, saving up to 50% of overall installation costs by eliminating the need to install separate electrical wiring and power outlets.

---

## Features

---

- ◆ 24x10/100Mbps Auto-negotiation Fast Ethernet RJ-45 ports PoE enabled
- ◆ 2 x 1000BASE-T/mini-GBIC combo Gigabit Ethernet ports
- ◆ Compliant with 802.3af specification
- ◆ Supports PoE power up to 15.4W for each PoE port
- ◆ Supports PoE power maximum 170W for the device
- ◆ Supports PoE Powered Device (PD) classification identify
- ◆ Each port supports auto MDI/MDIX, so there is no need to use cross-over cables or an up-link port
- ◆ Full-duplex transfer mode for speed of 10Mbps, 100Mbps, and 1000Mbps
- ◆ Half-duplex transfer mode for speed of 10Mbps and 100Mbps
- ◆ Wire speed reception and transmission

- ◆ Store-and-Forward switching scheme capability to support rate adaptation and ensure data integrity
- ◆ Up to 4K unicast addresses entities per device, self-learning, and table aging
- ◆ 768KBytes packet buffer
- ◆ Supports IEEE 802.3x flow control for full-duplex mode ports
- ◆ Supports Back-pressure flow control for half-duplex mode ports
- ◆ Supports 802.1Q VLAN
- ◆ Supports Port-based Trunking
- ◆ Supports Port-mirroring
- ◆ Supports Port-setting for Speed/Disable, Flow control, and Port based QoS (Quality of Service)
- ◆ Easy configuration via Web Browser
- ◆ Easy setting via Web Management Utility
- ◆ Standard 19" Rack-mount size

# ***UNPACKING AND INSTALLATION***

---

This chapter provides unpacking and installation information for the Switch.

---

## **Unpacking**

---

Open the shipping cartons of the Switch and carefully unpacks its contents. The carton should contain the following items:

- ◆ One DES-1526
- ◆ One AC power cord, suitable for your area's electrical power connections
- ◆ Four rubber feet to be used for shock cushioning
- ◆ Screws and two mounting brackets
- ◆ CD-ROM with Web Management Utility and Manual

If any item is found missing or damaged, please contact your local reseller for replacement.

---

## **Installation**

---

The site where you install the Switch stack may greatly affect its performance. When installing, consider the following pointers:

- ◆ Install the Switch in a fairly cool and dry place. See ***Technical Specifications*** for the acceptable temperature and humidity operating ranges.
- ◆ Install the Switch in a site free from strong electromagnetic field generators (such as motors), vibration, dust, and direct exposure to sunlight.

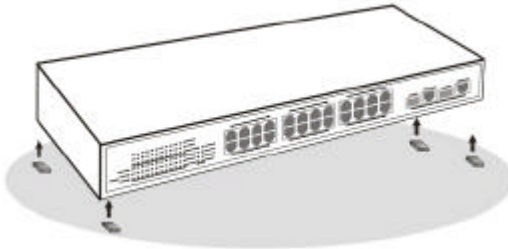
- ◆ Leave at least 10cm (4 in.) of space at the front and rear of the Switch for ventilation.
- ◆ Install the Switch on a sturdy, level surface that can support its weight, or in an EIA standard-size equipment rack. For information on rack installation, see the next section, titled Rack Mounting.
- ◆ When installing the Switch on a level surface, attach the rubber feet to the bottom of each device. The rubber feet cushion the Switch and protect the Switch case from scratching.

---

## Installing the Switch on a Desktop

---

When installing the Switch on a desktop or shelf, the rubber feet included with the Switch should first be attached. Attach these cushioning feet on the bottom at each corner of the device. Allow enough ventilation space between the Switch and any other objects in the vicinity.



**Figure 1. Installed on a Desktop**

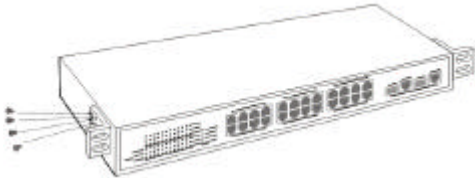


---

## Installing the Switch on a Rack

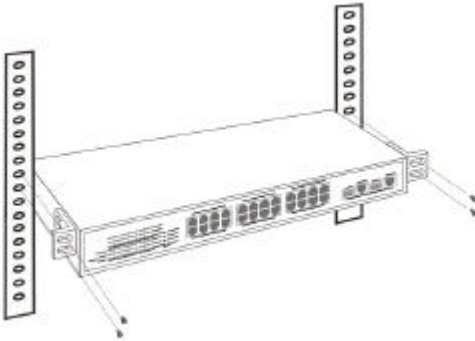
---

The Switch can be mounted in an EIA standard-size, 19-inch rack, which can be placed in a wiring closet with other equipment. Attach the mounting brackets at the Switch's front panel (one on each side), and secure them with the provided screws.



**Figure 2. Combine the Switch with the provided screws.**

Then, use screws provided with the equipment rack to mount each switch in the rack.



**Figure 3. Mount the Switch in the rack.**

---

## Connecting Network Cables

---

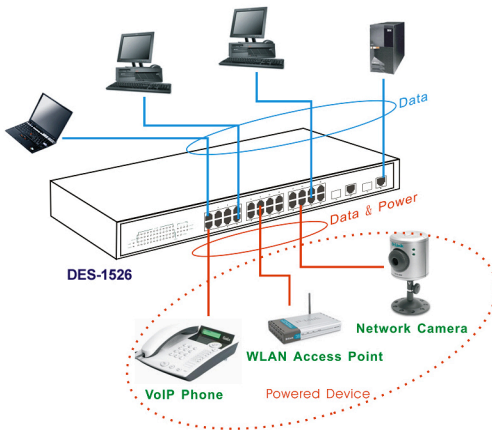
The Switch supports 24 10/100BASE-TX Fast Ethernet PoE enabled ports and 2 1000BASE-T/mini-GBIC combo ports. These 24 PoE ports will be automatically activated when a compatible terminal is identified. The Switch will supply power through the PoE port to the connected PD.

For Legacy devices that are not yet compatible, the PoE port will not offer the power to these devices. This feature allows users to freely and safely mix legacy and Power over Ethernet compatible devices on their network.

The Switch supports 10Mbps Ethernet or 100Mbps Fast Ethernet and it runs both in half- and full- duplex mode using two pairs of Category 5 cables.

The Switch also supports 2 1000BASE-T/mini-GBIC combo Gigabit Ethernet ports. When using the RJ-45 ports, it runs in Auto-negotiation mode with 10/100Mbps that runs in both half- and full-duplex mode and 1000Mbps that runs in full-duplex mode using four pair Category 5. When using the mini-GBIC ports, it runs in optional 1000BASE-SX/LX fiber connectivity with mini-GBIC transceiver module. The Combo Gigabit Ethernet port will run only one of the mini-GBIC ports or RJ-45 ports. The mini-GBIC port priority is higher than the RJ-45 port, therefore if both the mini-GBIC port and RJ-45 port are connected, then only the mini-GBIC will activate.

These RJ-45 ports are Auto-MDI type ports. The Switch can auto transform to MDI-II or MDI-X type, so you can just make an easy connection without worrying if you are using a standard or crossover RJ-45 cable.



**Figure 4. Connecting Network Cables**

---

## AC Power

---

The Switch uses the AC power supply 100-240V AC, 50-60 Hz. The power switch is located at the rear of the unit adjacent to the AC power connector and the system fan. The Switch's power supply will adjust to the local power source automatically and may

be turned on without having any or all LAN segment cables connected.

## ***IDENTIFYING EXTERNAL COMPONENTS***

---

This chapter describes the front panel, rear panel, and LED indicators of the Switch.

---

### **Front Panel**

---

The figure below shows the front panels of the Switch.



**Figure 5. Front panel view**

---

### **LED Indicator:**

---

Comprehensive LED indicators display the status of the Switch and the network (see the LED Indicators chapter below).

---

### **10/100Mbps PoE Ports (Port 1~24):**

---

These ports are PoE enable ports. These PoE ports will be automatically activated when a compatible terminal is identified, and the PoE port will supply power to the connected PoE device.

The Switch PoE function supports PoE ports priority management. When there is a system power shortage with the PD, the Switch will enforce the PoE port priority management; the lower port number will have the higher priority than the higher port number, Port 1 > Port 2 > ... > Port 24.

---

For legacy devices that are not yet compatible, the PoE port will not offer the power to these devices. This feature allows users to freely and safely mix legacy and Power over Ethernet compatible devices on their network.

These ports support network speeds of either 10Mbps or 100Mbps, and can operate in half- and full-duplex transfer modes. These ports also support the automatic MDI/MDIX crossover detection function, providing true “plug and play” capability. Just plug-in the network cable to the Switch directly and regardless if the end node is a NIC (Network Interface Card) or switch and Switch.

---

### **1000BASE-T Gigabit Ethernet Ports (Port 25~26):**

---

The Switch is equipped with two Gigabit twisted pair ports, supported auto negotiable 10/100/1000Mbps and auto MDI/MDIX crossover detection function. These two ports can operate in half-duplex mode for 10/100Mbps and full-duplex mode for 10/100/1000Mbps.

***Note: When the port is set to “Forced Mode”, the Auto MDI/MDIX will be disabled.***

---

### **mini-GBIC Ports (Port 25F~26F):**

---

The Switch is equipped with two mini-GBIC ports, which supports optional 1000BASE-SX/LX mini-GBIC modules.

***Note: Port 25 and 26 are the same ports with the mini-GBIC Port 25F and 26F ports, when plug in the mini-GBIC module, the device will activate mini-GBIC, and the RJ-45 port will be disabled.***

---

**Reset:**

---

The Reset button is to reset all settings back to the factory defaults.

*Note: Be sure that you record the settings of your device, or else all settings will be erased when pressing the “Reset” button.*

---

**Rear Panel**

---



**Figure 6. Rear panel of the Switch**

**AC Power Connector:**

This is a three-pronged connector that supports the power cord. Plug in the female connector of the provided power cord into this connector, and the male into a power outlet. Supported input voltages range from 100-240V AC at 50-60Hz.

# UNDERSTANDING LED INDICATORS

The front panel LEDs provide instant status feedback, and helps monitor and troubleshoot when needed.

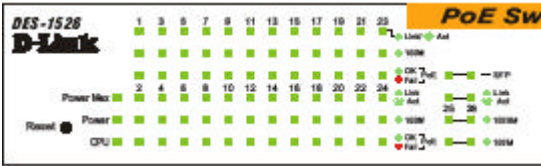


Figure 7. LED indicators of the Switch

## System LEDs

### POWER:

<b>On</b>	:	When the Power LED lights on, the Switch is receiving power.
<b>Off</b>	:	When the Power turns off or the power cord has improper connection.

### Power Maximum (PWR MAX)

<b>On</b>	:	When the system power resource remain $\leq 15.4W$ (the system power consumption $\geq 155W$ ), the LED will be on, the system will not provide power to the additional POE PD inserted.
<b>Off</b>	:	When the system has enough power more then 15.4W (the system power consumption $< 155W$ ).



---

### CPU: Management Indicator

---

<b>Blinking</b> :	When the CPU is working, the CPU LED is blinking.
-------------------	---

<b>On/Off</b> :	The CPU is not working.
-----------------	-------------------------

---

### Fast Ethernet PoE Port Status LEDs (Port 1 ~ 24)

---

#### Link/ACT: Link/Activity

---

<b>On</b> :	When the Link/ACT LED lights on, the respective port is successfully connected to an Ethernet network.
-------------	--

<b>Blinking</b> :	When the Link/ACT LED is blinking, the port is transmitting or receiving data on the Ethernet network.
-------------------	--

<b>Off</b> :	There is no link.
--------------	-------------------

---

#### 100Mbps

---

<b>On</b> :	When the 100Mbps LED lights on, the respective port is connected to a 100Mbps Fast Ethernet network.
-------------	--

<b>Off</b> :	When the respective port is connected to a 10Mbps Ethernet network.
--------------	---

---

#### PoE Status

---

<b>Green</b> :	When the PoE powered device (PD) is connected and the port supplies power normally.
----------------	---

<b>Red</b> :	When the PoE port have the following failure happens: <ul style="list-style-type: none"><li>● PoE power circuit shortage.</li><li>● Power over current: over the power current of PD's classification.</li><li>● Out of PoE voltage of 44 ~ 57 VDC output.</li><li>● Cost fail.</li></ul>
--------------	---

<b>Off</b> :	No PoE powered device (PD) connected or unplugged the PoE
--------------	---

---

	output port.
--	--------------

---

## Gigabit Ethernet Port Status LEDs

---

---

### Link/ACT: Link/Activity

---

<b>On</b> :	When the Link/ACT LED lights on, the respective port is successfully connected to an Ethernet network.
<b>Blinking</b> :	When the Link/ACT LED is blinking, the port is transmitting or receiving data on the Ethernet network.
<b>Off</b> :	There is no link.

---

### 1000Mbps

---

<b>On</b> :	When the 1000Mbps LED lights on, the respective port is connected to a 1000Mbps Gigabit Ethernet network.
<b>Off</b> :	When the respective port is connected to a 10Mbps Ethernet or 100Mbps Fast Ethernet network.

---

### 100Mbps

---

<b>On</b> :	When the 100Mbps LED lights on, the respective port is connected to a 100Mbps Fast Ethernet network.
<b>Off</b> :	When the respective port is connected to a 10Mbps Ethernet or 1000Mbps Gigabit Ethernet network.

---

### mini-GBIC (Use Combo ports or SFP)

---

<b>On</b> :	When the mini-GBIC module is installed and connected to a network, the mini-GBIC LED lights on.
<b>Off</b> :	No mini-GBIC module installed.

## *CONFIGURATION*

---

Through the Web browser you can configure Switch functions such as VLAN, Trunking, and QoS... etc.

With the attached Web Management Utility, you can easily discover all the Web Management Switches, assign the IP Address, changing the password, and upgrade new firmware.

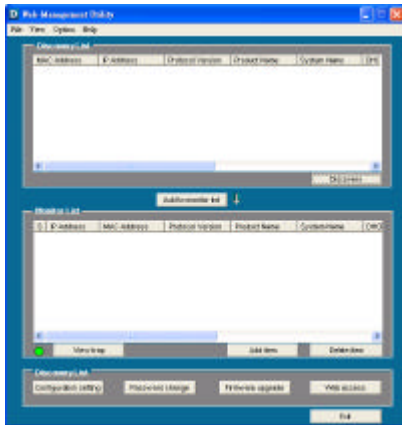
---

### **Installing the Web Management Utility**

---

The following instructions guide you through the installation of the Web Management utility.

1. Insert the Utility CD in the CD-ROM Drive.
2. From the **Start** menu on the Windows desktop, choose **Run**.
3. In the **Run** dialog box, type D:\Web Management Utility\setup.exe (D:\ depends where your CD-ROM drive is located) and click **OK**.
4. Follow the on-screen instructions to install the utility.
5. Upon completion, go to **Program Files** -> **web\_management\_utility** and execute the Web Management utility. (Figure 6.)



**Figure 8. Web Management Utility**

The Web Management Utility is divided into four parts, ***Discovery List***, ***Monitor List***, ***Device Setting***, and ***Toolbar function***, for detailed instructions, follow the section below.

---

## Discovery List

---

This is the list where you can discover all the Web management devices in the entire network.

By pressing the ***“Discovery”*** button, you can list all the Web Management devices in the discovery list.

Double click or press the ***“Add to monitor list”*** button to select a device from the Discovery List to the Monitor List.

### System word definitions in the Discovery List:

- ◆ **MAC Address:** Shows the device MAC Address.
- ◆ **IP Address:** Shows the current IP address of the device.
- ◆ **Protocol version:** Shows the version of the Utility protocol.
- ◆ **Product Name:** Shows the device product name.
- ◆ **System Name:** Shows the appointed device system name.
- ◆ **Location:** Shows where the device is located.
- ◆ **Trap IP:** Shows the IP where the Trap is to be sent.
- ◆ **Subnet Mask:** Shows the Subnet Mask set of the device.
- ◆ **Gateway:** Shows the Gateway set of the device.


---

## Monitor List

---

All the Web Smart Devices in the Monitor List can be monitored. You can also receive the trap and show the status of the devices.

### System word definitions in the Monitor List:

- ◆ **S:** Shows the system symbol of the Web-Smart device,  represents a device system that is not alive.
- ◆ **IP Address:** Shows the current IP address of the device.
- ◆ **MAC Address:** Shows the device MAC Address.
- ◆ **Protocol version:** Shows the version of the Utility protocol.
- ◆ **Product Name:** Shows the device product name.
- ◆ **System Name:** Shows the appointed device system name.
- ◆ **Location:** Shows where the device is located.
- ◆ **Trap IP:** Shows the IP where the Trap is to be sent.
- ◆ **Subnet Mask:** Shows the Subnet Mask set of the device.

- ◆ **Gateway:** Shows the Gateway set of the device.

---

## View Trap

---

The Trap function can receive the events that happen on the Web Management Switch in the Monitor List.

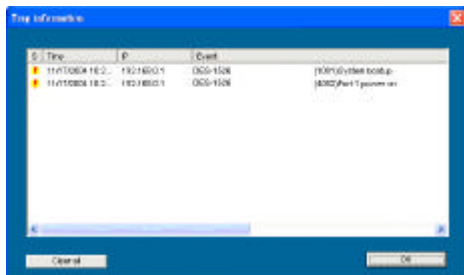
There is a light indicator behind the “**View Trap**” button. When the light is green, it means that there is no trap transmitted, and when it is red, it means that a new trap has been transmitted, reminding us to view the trap. (Figure 9)



**Figure 9. View trap button**

When the “**View Trap**” button is clicked, a Trap Information window will pop up. It will display the trap information including the Symbol, Time, Device IP, and the Event occurred. (Figure 10)

The symbol “**!**” represents the trap signal. This symbol will disappear after you review and click on the event record.



**Figure 10. Trap information**

*Note: In order to receive Trap information, the Switch has to be configured with Trap IP and Trap Events in the Web browser. These settings are available in the Trap Setting Menu.*

---

### **Add Item**

---

To add a device to the Monitor List manually, enter the IP Address of the device that you want to monitor.

---

### **Delete Item**

---

To delete the device in the Monitor List.

---

### **Device Setting**

---

You can set the device by using the function key in the Device Setting Dialog box.

---

### **Configuration Setting**

---

In this Configuration Setting, you can set the IP Address, Subnet Mask, Gateway, Set Trap to (Trap IP Address), System name, Location, and DHCP setting.

In factory default, the IP address of the DES-1526 will be automatically assigned from a DHCP server (*DHCP enabled*). If your network has no DHCP server, the DES-1526 will fail to get an IP address, and the DES-1526 will be assigned the default IP address of 192.168.0.1 with a netmask of 255.255.255.0.

Select the device in the Discovery list or Monitor List and press this button; then the Configuration Setting window will pop up (Figure 11). After filling in the data that you want to change, you

must fill in the password and press the “Set” button to process the data change immediately.



**Figure 11. Configuration Setting**

---

## Password Change

---

You can use this when you need to change the password. Fill in the required passwords in the dialog boxes and press the “Set” button to process the password change immediately.



**Figure 12. Password Change**



---

## Firmware Upgrade

---

When the device has a new function, there will be a new firmware to update the device; use this function to upgrade the firmware.

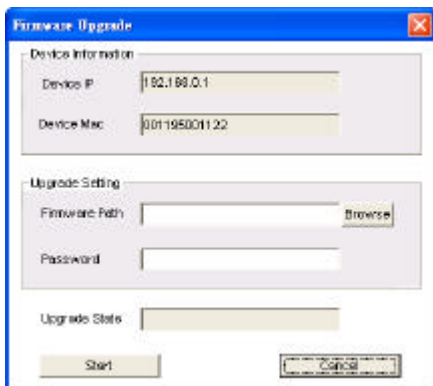


Figure 13. Firmware upgrade

---

## Web Access

---

Double click the device in the Monitor List or select a device in the Monitor List and press the “**Web Access**” button to access the device in a Web browser.

---

## Toolbar

---

The toolbar in the Web Management Utility has four main tabs: File, View, Options, and Help.

---

### File TAB

---

In the “**File TAB**”, there is Monitor Save, Monitor Save As, Monitor Load, and Exit.

**Monitor Save:** To record the settings of the Monitor List to the default settings so that when you open the Web Management Utility the next time, it will automatically load the default recorded setting.

**Monitor Save As:** To record the setting of the Monitor List to an appointed filename and file path.

**Monitor Load:** To manually load the setting file of the Monitor List.

**Exit:** To exit the Web Management Utility.

---

### View TAB

---

In the “**View TAB**”, there are the view log and clear log functions, the view log function will help you display trap settings.

**View Log:** To display the event of the Web Management Utility and the device.

**Clear Log:** To clear the log.

---

## Option TAB

---

In the “*Option TAB*”, there is the Refresh Time function. This function helps you to refresh the time for monitoring the device. Choose *15 secs, 30 secs, 1 min, 2 min, and 5 min* to select the time for monitoring.

---

## Help TAB

---

In the “*Help TAB*”, there is the About function; it displays the version of the Web Management Utility.

---

## Configuring the Switch

---

The DES-1526 has a Web GUI interface for smart switch configuration. The Switch can be configured through the Web browser. A network administrator can manage, control, and monitor the Switch from the local LAN. This section indicates how to configure the Switch to enable its smart functions including: *Port Settings, VLAN Settings, Trunk Settings, Port Mirroring, SNMP Settings, PoE Settings, Status, Statistics, System Settings, Trap Settings, Password Settings, Backup Settings, and Reset Settings.*

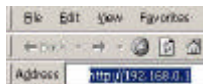
---

## Login

---

Before you configure this device, note that when the Web Smart Switch is configured through an Ethernet connection, make sure the manager PC must be set on same the **IP network**. For example, when the default IP address of the Web Smart Switch is **192.168.0.1**, then the manager PC should be set at 192.168.0.x (where x is a number between 2 and 254), and the default subnet mask is 255.255.255.0.

Open the Web browser program and Enter IP address ***http://192.168.0.1*** (the factory-default IP address setting) to the address location.



**Figure 14.**

Or through the Web Management Utility, you do not need to remember the IP Address, select the device shown in the Monitor List of the Web Management Utility to settle the device on the Web browser.

When the following dialog page appears, enter the default password "***admin***" and press Login to enter the main configuration window.

**Login**

System Name :  
 Location Name :  
 IP Address : 192.168.8.1  
 MAC Address : 00-08-00-49-60-87

Password

**Figure 15**

After entering the password, the main page appears, and the screen will display the device status.

**D-Link** *Building Networks for Everyone* **Express EtherNetwork**

**Switch Status**

Product Name	DSS-1028
Firmware Version	1.01.04
Hardware Version	2.001.002
SNMP	Enabled
IP Address	172.16.1.2
Subnet mask	255.255.255.0
Default gateway	172.16.1.254
Vlan IP	0.0.0.0
MAC address	00-11-40-00-00-00
System Name	
Location Name	
Login Timeout (minutes)	0
System Uptime	0:00:07.000 (25:00:00:00:00:00)

**PORT Status**

10/100 Mbps									
ID	Speed	Flow Control	QoS	Link Status	ID	Speed	Flow Control	QoS	Link Status
01	Auto	Enable	Normal	Down	11	Auto	Enable	Normal	Down
02	Auto	Enable	Normal	Down	12	Auto	Enable	Normal	Down
03	Auto	Enable	Normal	Down	13	Auto	Enable	Normal	Down
04	Auto	Enable	Normal	Down	14	Auto	Enable	Normal	Down

**Figure 16**

---

## Setup Menu

---

When the main page appears, the *Setup menu* is on the left side of the screen (Figure 17). Click on the setup item that you want to configure. There are eleven options: *Port Settings*, *VLAN Settings*, *Trunk Settings*, *Mirror Settings*, *SNMP Settings*, *PoE Settings*, *Device Status*, *Statistics*, *System Settings*, *Trap Settings*, *Password Settings*, *Backup Settings*, and *Reset Settings* as shown in the Main Menu screen.



Figure 17. Setup menu

---

## Configuring Setup Setting

---

There are six items, including Port Settings, VLAN Settings, Trunk Settings, Mirror Settings, SNMP Settings, and PoE Settings in Setup menu.

---

### Port Settings

---

In the Port Settings menu (Figure 18), this page will display each port's status. Press the ID parameter to set each port's *Speed*, *Flow Control*, *QoS* and *Link Status*. When you need to renew the posted information, press the "Refresh" button.

The *Link Status* in the screen will display the connection speed and duplex mode; otherwise this dialog box will display **down** when the port is disconnected.

PORT Setting Admin

10/100 Mbps									
ID	Speed	Flow Control	QoS	Link Status	ID	Speed	Flow Control	QoS	Link Status
01	Auto	Enable	Normal	Down	12	Auto	Enable	Normal	Down
02	Auto	Enable	Normal	Down	11	Auto	Enable	Normal	100M Half
03	Auto	Enable	Normal	Down	15	Auto	Enable	Normal	Down
04	Auto	Enable	Normal	Down	16	Auto	Enable	Normal	Down
05	Auto	Enable	Normal	Down	17	Auto	Enable	Normal	Down
06	Auto	Enable	Normal	Down	18	Auto	Enable	Normal	Down
07	Auto	Enable	Normal	Down	19	Auto	Enable	Normal	Down
08	Auto	Enable	Normal	Down	20	Auto	Enable	Normal	Down
09	Auto	Enable	Normal	Down	21	Auto	Enable	Normal	Down
10	Auto	Enable	Normal	Down	22	Auto	Enable	Normal	Down
11	Auto	Enable	Normal	Down	23	Auto	Enable	Normal	Down
12	Auto	Enable	Normal	Down	24	Auto	Enable	Normal	Down

10/100/1000 Mbps									
ID	Speed	Flow Control	QoS	Link Status	ID	Speed	Flow Control	QoS	Link Status
25	Auto	Enable	Normal	Down	26	Auto	Enable	Normal	Down

Fiber 1000 Mbps									
ID	Speed	Flow Control	QoS	Link Status	ID	Speed	Flow Control	QoS	Link Status
28	Auto	Enable	Normal	Down	29	Auto	Enable	Normal	Down

Figure 18. Port Configuration

To change the port setting, click on the ID parameter to enter the selected port to configure its Speed/Disable and Flow control.

#### PORT Settings

Please be aware that speed must set as same as link partner. Otherwise, packet loss or link error might occur.

ID	Speed	Flow Control	QoS
01	Auto	Enable	Normal

Apply

Figure 19. Port Settings.



### **Speed/Disable:**

This setting has six modes—*100M Full*, *100M Half*, *10M Full*, *10M Half*, *Auto*, and *Disable*—for speed or port disable selections.

### **Flow Control:**

This setting determines whether or not the Switch will be handling flow control. Set *FlowCtrl* to *Enable* for avoiding data transfer overflow. If it is set to *Disable*, there is either no flow control or other hardware/software management.

When the 10/100M port is set to *full-duplex mode*, then the flow control will be automatically set to *disable*; and if the 10/100M port is set to *half-duplex mode*, the flow control will be automatically set to *enable*.

### **QoS:**

In some ports that need to have a high priority to manage the data transfer, QoS should be changed. Set the port's QoS to high to determine the port will always transfer their data first.

---

## **802.1Q VLAN Settings (Virtual Local Area Network)**

---

A VLAN is a collection of switch ports that make up a single broadcast domain. You can configure a VLAN for a single switch, or for multiple switches. When you create a VLAN, you can control traffic flow and ease the administration of moves, adds, and changes on the network, by eliminating the need to change physical cabling.

On VLAN settings, there are two main settings, VID Table Setting and Port VLAN Setting.

**VID:** Select the VID group that you set.

When you select VID Table Setting, press “Add new VID” to create new VID group, from port 01 ~ port 26 (26F), select Untag Port, Tag Port, or Not Member for each port. To save the VID group, press the “Apply” button. To remove the selected VID group, select the VID group and press “Remove the VID” button. To modify the VID group setting, select the VID group and change the setting, and press the “Apply” button to save the settings.

The screenshot shows a web interface for VLAN settings. At the top, it displays "IEEE 802.1Q VLAN" and "VID Table Setting". Below this, there is a dropdown menu for "VID" set to "1" and an "Apply" button. The main part of the interface is a table with 26 columns representing ports from 01 to 26F. The rows are labeled "Egress Rule", "Untag Port", "Tag Port", and "Not Member". Each cell in the table contains a radio button. Below the table, there are two buttons: "Remove the VID" and "Add new VID".

Egress Rule	01	02	03	04	05	06	07	08	09	10	11	12	13	14	15	16	17	18	19	20	21	22	23	24	25	26	26F
Untag Port	<input checked="" type="radio"/>	<input checked="" type="radio"/>	<input checked="" type="radio"/>	<input checked="" type="radio"/>	<input checked="" type="radio"/>	<input checked="" type="radio"/>	<input checked="" type="radio"/>	<input checked="" type="radio"/>	<input checked="" type="radio"/>	<input checked="" type="radio"/>	<input checked="" type="radio"/>	<input checked="" type="radio"/>	<input checked="" type="radio"/>	<input checked="" type="radio"/>	<input checked="" type="radio"/>	<input checked="" type="radio"/>	<input checked="" type="radio"/>	<input checked="" type="radio"/>	<input checked="" type="radio"/>	<input checked="" type="radio"/>	<input checked="" type="radio"/>	<input checked="" type="radio"/>	<input checked="" type="radio"/>	<input checked="" type="radio"/>	<input checked="" type="radio"/>	<input checked="" type="radio"/>	<input checked="" type="radio"/>
Tag Port	<input type="radio"/>	<input type="radio"/>	<input type="radio"/>	<input type="radio"/>	<input type="radio"/>	<input type="radio"/>	<input type="radio"/>	<input type="radio"/>	<input type="radio"/>	<input type="radio"/>	<input type="radio"/>	<input type="radio"/>	<input type="radio"/>	<input type="radio"/>	<input type="radio"/>	<input type="radio"/>	<input type="radio"/>	<input type="radio"/>	<input type="radio"/>	<input type="radio"/>	<input type="radio"/>	<input type="radio"/>	<input type="radio"/>	<input type="radio"/>	<input type="radio"/>	<input type="radio"/>	<input type="radio"/>
Not Member	<input type="radio"/>	<input type="radio"/>	<input type="radio"/>	<input type="radio"/>	<input type="radio"/>	<input type="radio"/>	<input type="radio"/>	<input type="radio"/>	<input type="radio"/>	<input type="radio"/>	<input type="radio"/>	<input type="radio"/>	<input type="radio"/>	<input type="radio"/>	<input type="radio"/>	<input type="radio"/>	<input type="radio"/>	<input type="radio"/>	<input type="radio"/>	<input type="radio"/>	<input type="radio"/>	<input type="radio"/>	<input type="radio"/>	<input type="radio"/>	<input type="radio"/>	<input type="radio"/>	<input type="radio"/>

**Figure 20. VLAN Settings**

When you select Port VLAN setting, fill in each port's PVID value between 1 and 4094.

IEEE 802.1Q VLAN

Port VID Setting

Port	PVID	Port	PVID	Port	PVID	Port	PVID
01	<input type="text" value="1"/>	02	<input type="text" value="1"/>	03	<input type="text" value="1"/>	04	<input type="text" value="1"/>
05	<input type="text" value="1"/>	06	<input type="text" value="1"/>	07	<input type="text" value="1"/>	08	<input type="text" value="1"/>
09	<input type="text" value="1"/>	10	<input type="text" value="1"/>	11	<input type="text" value="1"/>	12	<input type="text" value="1"/>
13	<input type="text" value="1"/>	14	<input type="text" value="1"/>	15	<input type="text" value="1"/>	16	<input type="text" value="1"/>
17	<input type="text" value="1"/>	18	<input type="text" value="1"/>	19	<input type="text" value="1"/>	20	<input type="text" value="1"/>
21	<input type="text" value="1"/>	22	<input type="text" value="1"/>	23	<input type="text" value="1"/>	24	<input type="text" value="1"/>
25	<input type="text" value="1"/>	26	<input type="text" value="1"/>	25F	<input type="text" value="1"/>	26F	<input type="text" value="1"/>

Apply

Figure 21.

---

## Trunk Setting

---

The Trunk function enables you to cascade two or more devices with larger bandwidths.

There are four Trunking groups to be set; and there are default ports in each member. Checked “Enable” to use the trunk function, select the ports in each member to be trunk, and click “Apply” to activate the selected trunk group.

### Trunk Setting

The selected trunk port setting must set to the same VLAN Group.

ID	Enable	Member
01	<input type="checkbox"/>	01 02 03 04 05 06 07 08 <input type="checkbox"/> <input type="checkbox"/> <input type="checkbox"/> <input type="checkbox"/> <input type="checkbox"/> <input type="checkbox"/> <input type="checkbox"/> <input type="checkbox"/>
02	<input type="checkbox"/>	09 10 11 12 13 14 15 16 <input type="checkbox"/> <input type="checkbox"/> <input type="checkbox"/> <input type="checkbox"/> <input type="checkbox"/> <input type="checkbox"/> <input type="checkbox"/> <input type="checkbox"/>
03	<input type="checkbox"/>	17 18 19 20 21 22 23 24 <input type="checkbox"/> <input type="checkbox"/> <input type="checkbox"/> <input type="checkbox"/> <input type="checkbox"/> <input type="checkbox"/> <input type="checkbox"/> <input type="checkbox"/>
04	<input type="checkbox"/>	25 26 <input type="checkbox"/> <input type="checkbox"/>

**Figure 22. Trunk Settings**

Be sure that the selected trunk setting port is connected to the device with a same VLAN group.

---

## Mirror Setting

---

Port Mirroring is a method of monitoring network traffic that forwards a copy of each incoming and/or outgoing packet from one port of a network switch to another port where the packet can be studied. It enables the manager to keep close track of switch performance and alter it if necessary.

Configuring the port mirroring by assigning a source port from which to copy all packets and a sniffer port where those packets will be sent.

The selections of the sniffer mode are as follows:

**TX (transmit) mode:** This mode will duplicate the data transmitted from the source port and forward it to the sniffer port.

**RX (receive) mode:** This mode will duplicate the data sent to the source and forward it to the sniffer port.

**Both (transmit and receive) mode:** This mode will duplicate both the data transmitted from and data sent to the source port, and then it will forward the data to the sniffer port.

Mirror Setting

ID	01
Sniffer Mode	Disable <input type="button" value="v"/>
Sniffer Port	<input type="button" value="v"/>
Source Port	01 02 03 04 05 06 07 08 09 10 11 12
	<input type="checkbox"/> <input type="checkbox"/> <input type="checkbox"/> <input type="checkbox"/> <input type="checkbox"/> <input type="checkbox"/> <input type="checkbox"/> <input type="checkbox"/> <input type="checkbox"/> <input type="checkbox"/> <input type="checkbox"/> <input type="checkbox"/>
	13 14 15 16 17 18 19 20 21 22 23 24
	<input type="checkbox"/> <input type="checkbox"/> <input type="checkbox"/> <input type="checkbox"/> <input type="checkbox"/> <input type="checkbox"/> <input type="checkbox"/> <input type="checkbox"/> <input type="checkbox"/> <input type="checkbox"/> <input type="checkbox"/> <input type="checkbox"/>
25 26 25F 26F	
<input type="checkbox"/> <input type="checkbox"/> <input type="checkbox"/> <input type="checkbox"/>	

**Figure 23. Mirror Setting.**

---

## **SNMP Setting**

---

Simple Network Management Protocol (SNMP) is an OSI Layer 7 (Application Layer) designed specifically for managing and monitoring network devices. SNMP enables network management stations to read and modify the settings of gateways, routers, switches, and other network devices. Use SNMP to configure system features for proper operation, monitor performance and detect potential problems in the Switch, switch group, or network.

Managed devices that support SNMP include software (referred to as an agent), which runs locally on the device. A defined set of variables (managed objects) is maintained by the SNMP agent and used to manage the device. These objects are defined in a Management Information Base (MIB), which provides a standard presentation of the information controlled by the on-board SNMP agent. SNMP defines both the format of the MIB specifications and the protocol used to access this information over the network.

The DES-1526 supports the SNMP versions 1. In SNMP v.1, user authentication is accomplished using 'community strings', which function like passwords. The remote user SNMP application and the Switch SNMP must use the same community string. SNMP packets from any station that has not been authenticated are ignored (dropped).

The default community strings for the Switch used for SNMP v.1 management access are:

**public** - Allows authorized management stations to retrieve MIB objects.

**private** - Allows authorized management stations to retrieve and modify MIB objects.

## Traps

Traps are messages that alert network personnel of events that occur on the Switch. The events can be as serious as a reboot (someone accidentally turned OFF the Switch), or less serious like a port status change. The Switch generates traps and sends them to the trap recipient (or network manager). Typical traps include trap messages for Device boot up, Authentication Failure, Port status change, and Abnormal transmit/receive data packet error.

## MIBs

Management and counter information are stored by the Midspan in the Management Information Base (MIB). The DES-1526 uses the standard MIB-II Management Information Base module and Power over Ethernet MIB (RFC3621). Consequently, values for MIB objects can be retrieved from any SNMP-based network management software. In addition, the DES-1526 also supports its own proprietary enterprise MIB as an extended Management Information Base. The proprietary MIB may also be retrieved by specifying the MIB Object Identifier. MIB values can be either read-only or read-write.

**Enabled / Disabled:** To enable or disable the SNMP function on the Switch.

**SNMP Community / Trap:** To configure the SNMP Community or SNMP Trap configuration.

## Configure SNMP Community:



SNMP Setting Enabled

SNMP: Community

ID	State	Community Name
01	RO	public
02	RW	private

Delete Group Add Group

Figure 24. SNMP Community Setting

**Add Group:** To add a SNMP Community group, press the “*Add Group*” button. The Add SNMP Community configuration window will pop up. Fill in the community name and assign the community enable read\_only or read\_write. Press the “Apply” button to execute the setting.



SNMP Community Set

Community Name:

Community Enable:  ReadOnly (RO)  ReadWrite (RW)

Apply

Figure 25. Add SNMP Community group



**Delete Group:** To delete previously defined SNMP Community group, press the **“Delete Group”** button. The Delete SNMP Community configuration window will pop up; check the delete dialog box. Press **“Apply”** to delete the selected SNMP Community Group.



**Figure 26. Delete SNMP Community group**

**Modify Group:** To modify a previously defined SNMP Community group, click on the **ID** parameter to enter to the selected SNMP Community Group to configure its community name and community enable. Press **“Apply”** to save change of the SNMP Community Group.



**Figure 27. Modify SNMP Community group**

## Configure SNMP Trap:

SNMP Setting: Enabled

SNMP: Trap

Trap authentication fail       power on/power off & power threshold above/below

ID	Trap Name	IP	VID	Event
11	public	0.0.0.0	0	None

Delete Trap      Add Trap

Figure 28. Configure SNMP Trap Setting

**Trap authentication fail:** When checked, the dialog box of the *Trap authentication fail*. A trap when authentication fails, the Switch will trap the authentication failure even to the SNMP host.

**Power on/power off & threshold above/below:** When checked the dialog box of the *power on/power off & power threshold above/below*. A trap when the PoE port's power turned on/turned off ; or radio of the system power supply larger than or smaller than the System power Threshold setting.

**Add Trap:** To create a recipient of SNMP traps generated by the Switch's SNMP agent, press the "**Add Trap**" button, and the SNMP Trap Set window will pop up. You can fill in the community name and trap IP address of the remote management station that will serve as the SNMP host for the Switch and check the events selection to enabled selected event traps.

### SNMP Trap Set.

Trap Community Name	<input type="text"/>
Trap IP	<input type="text" value="0"/> <input type="text" value="0"/> <input type="text" value="0"/> <input type="text" value="0"/> Vid: <input type="text" value="1"/>
System Events	<input type="checkbox"/> device bootstrap
Fiber Port Events	<input type="checkbox"/> link up / link down <input type="checkbox"/> abnormal receive error <input type="checkbox"/> abnormal transmit error
Twisted Pair Port Events	<input type="checkbox"/> link up / link down <input type="checkbox"/> abnormal receive error <input type="checkbox"/> abnormal transmit error
PoE Events	<input type="checkbox"/> poe power fail <input type="checkbox"/> power over current <input type="checkbox"/> power short circuit

Figure 29. Add SNMP Trap

**System Events:** Monitoring the Switch status.

**Device bootup:** A trap when the Switch Bootup was successful.

**Fiber Port Events:** Monitoring the Fiber port status.

**Link Up/Link Down:** A trap when there is linking status in the fiber port.

**Abnormal\* Receive Error:** A trap when there is a receive data error in the fiber port.

**Abnormal\* Transmit Error:** A trap when there is a transmit data error in the fiber port.

**Twisted Pair Port Events:** Monitoring the twisted pair port status.

**Link Up/Link Down:** A trap when there is linking status in the twisted pair port.

**Abnormal\* Receive Error:** A trap when there is a receive data error in the twisted pair port.

**Abnormal\* Transmit Error:** A trap when there is a transmit data error in the twisted pair port.

**Abnormal\*:** 50 error packet count within 10 seconds.

**PoE Events:** Monitoring the PoE ports status.

**PoE Power fail:** A trap when the port's power source fails or the PD64012 fails.

**Power over current:** A trap when the PoE port's power is over current.

**Power short circuit:** A trap when the PoE port's power circuit was short.

**Delete Trap:** To delete previously defined SNMP Trap, press the **"Delete Trap"** button. The Delete SNMP Trap Delete configuration window will pop up; check the delete dialog box. Press **"Apply"** to delete the selected SNMP Trap setting.

SNMP Trap Delete.

Delete	ID	Trap Name	IP	VID	Event
<input type="checkbox"/>	01	public	0.0.0.0	0	None
<input checked="" type="checkbox"/>	02	public	172.16.4.28	1	B1, F2, F3, F4, T1, T2, T3, p1, p2, p3, p4, p5.

Apply

**Figure 30. Delete SNMP Trap**

**Modify Trap:** To modify a previously defined SNMP Trap, click on the **ID** parameter to enter to the selected SNMP Trap to configure its community name, IP address, and events. Press **"Apply"** to save changes of the SNMP Trap.

### SNMP Trap Set

Trap Community Name	<input type="text" value="public"/>
Trap ID	<input type="text" value="172"/> <input type="text" value="15"/> <input type="text" value="4"/> <input type="text" value="28"/> OID: <input type="text" value="1.3"/>
System Events	<input checked="" type="checkbox"/> device bootup
Fiber Port Events	<input type="checkbox"/> link up / link down <input type="checkbox"/> abnormal receive error <input type="checkbox"/> abnormal transmit error
Terminated Port Events	<input checked="" type="checkbox"/> link up / link down <input checked="" type="checkbox"/> abnormal receive error <input checked="" type="checkbox"/> abnormal transmit error
Power Events	<input checked="" type="checkbox"/> gpo power fail <input checked="" type="checkbox"/> power overcurrent <input checked="" type="checkbox"/> power shortcircuit

Figure 31. Modify SNMP Trap

## PoE Setting

When you click on the PoE Setting, the PoE Status will appear on the screen. It will display the PoE status including, Port Enable, Power limit, Power (W), Voltage(V), Current (mA), Classification, Port status, System Budget Power, Support Total Power, Remainder Power, and The ratio of system power supply.

**Note: The PoE Status information of Power current, Power Voltage, and Current is the power usage information of the connected PD; please “Refresh” to renew the information.**

PoE Status

Refresh

PoE Port Status

ID	Port Enable	power limit	Power (W)	Voltage (V)	Current (mA)	Classification	Status
01	Enable	Auto	0.00	0.00	0.00	+	Normal
02	Enable	Auto	0.00	0.00	0.00	+	Normal
03	Enable	Auto	0.00	0.00	0.00	+	Normal
04	Enable	Auto	0.00	0.00	0.00	+	Normal
05	Enable	Auto	0.00	0.00	0.00	+	Normal
06	Enable	Auto	0.00	0.00	0.00	+	Normal
07	Enable	Auto	0.00	0.00	0.00	+	Normal
08	Enable	Auto	0.00	0.00	0.00	+	Normal
09	Enable	Auto	0.00	0.00	0.00	+	Normal
10	Enable	Auto	0.00	0.00	0.00	+	Normal
11	Enable	Auto	0.00	0.00	0.00	+	Normal
12	Enable	Auto	0.00	0.00	0.00	+	Normal
13	Enable	Auto	0.00	0.00	0.00	+	Normal
14	Enable	Auto	0.00	0.00	0.00	+	Normal
15	Enable	Auto	0.00	0.00	0.00	+	Normal
16	Enable	Auto	0.00	0.00	0.00	+	Normal
17	Enable	Auto	0.00	0.00	0.00	+	Normal
18	Enable	Auto	0.00	0.00	0.00	+	Normal
19	Enable	Auto	0.00	0.00	0.00	+	Normal
20	Enable	Auto	0.00	0.00	0.00	+	Normal
21	Enable	Auto	0.00	0.00	0.00	+	Normal
22	Enable	Auto	0.00	0.00	0.00	+	Normal
23	Enable	Auto	0.00	0.00	0.00	+	Normal
24	Enable	Auto	0.00	0.00	0.00	+	Normal
25	Enable	Auto	0.00	0.00	0.00	+	Normal

System Power Status

System Budget Power	170.00 W
Support Total Power	8.00 W
Remainder Power	170.00 W
The ratio of system power supply	8.00 %

Info:

1.The Class 1 PD work case (100W),The Class 2 PD is 100W,The Class 3 PD is 100W,The Class 0 and 4 PD are 300W.

**Figure 32. PoE Status**

### **POE Port Status:**

Selected “POE Port Status” to configure the PoE Port setting.

To configure the settings, click on the ID parameter to enter the selected port.



**Figure 33. PoE Port Setting**

**Poe Enable:** Select to enable or disable the PoE function.

**Power limit:** This function allows you to manually set the port power current limitation to be given to the PD. To protect the DWL-P1526 and the connected device, the power limit function will disable the PoE function of the port when the power is overloaded. Select “<5W”, “<10W”, “<14W” and “Auto” for the power limit. “Auto” will follow the classification from the PD power current.

### **POE System Setting:**

Selected “POE System Setting” to configure the PoE System setting.



**Figure 34. PoE System Setting**



**System power Threshold:** When the ratio of the system power supply is large than or smaller than the *System power Threshold setting*, the Switch will send trap event to the Management Station.

**Note:** When there is a system power shortage with the PD, the Switch will enforce the PoE port priority management. The lower port number will have the higher priority than the higher port number, Port 1 > Port 2 > ... > Port 24.

## Device Status

Click on the “**Status**” button to display the device status on this screen. It will display the System Status, Port Status, VLAN Status, Trunk Status, Mirror Status, and PoE Status.

Press “**Refresh**” when you need to renew the posted information.

Switch Status

Product Name	D69-1526
Firmware Version	1.83.84
Protocol Version	2.831.832
DHCP	Enable
IP Address	172.16.4.5
Subnet mask	255.255.0.0
Default gateway	172.16.1.254
Trap IP	172.16.4.28
MAC address	00-11-25-aa-aa-ab
System Name	
Location Name	
Locks Timeout (minutes)	5
System Uptime	0 days 1 hour 3 min 33 sec 0 ms

PORT Status

10/100 Mbps									
ID	Speed	Flow control	QoS	Link status	ID	Speed	Flow control	QoS	Link status
E1	Auto	Enable	Normal	Down	E3	Auto	Enable	Normal	Down
E2	Auto	Enable	Normal	Down	E4	Auto	Enable	Normal	Down
E3	Auto	Enable	Normal	Down	E5	Auto	Enable	Normal	Down
E4	Auto	Enable	Normal	Down	E6	Auto	Enable	Normal	Down

### **Figure 35. System Status**

---

## Statistics

---

The Statistics Menu screen will display the status of each port packet count.

ID	Tx OK	Tx Err	Tx Disc	Tx Error	ID	Rx OK	Rx Err	Rx Disc	Rx Error
<b>10100 Mbps</b>									
01	0	0	0	0	11	0	0	0	0
02	280	4	0	0	10	17956	14388	0	323
03	0	0	0	0	12	0	0	0	0
04	0	0	0	0	13	0	0	0	0
05	0	0	0	0	14	0	0	0	0
06	0	0	0	0	15	0	0	0	0
07	0	0	0	0	16	0	0	0	0
08	0	0	0	0	17	0	0	0	0
09	0	0	0	0	18	0	0	0	0
10	0	0	0	0	19	0	0	0	0
11	0	0	0	0	20	0	0	0	0
12	0	0	0	0	21	0	0	0	0
<b>101001000 Mbps</b>									
01	0	0	0	0	22	0	0	0	0
<b>Fiber 1000 Mbps</b>									
01	0	0	0	0	23	0	0	0	0

**Figure 36. Statistic**

For detailed packet information, click on the ID parameter as Figure 26.

Port	ID		
<b>TX</b>			
Bytes	4340841		
UnicastPkts	2142	DropPkts	0
MulticastPkts	7402	PausePkts	0
BroadcastPkts	13	ReceiveDisc	0
DeferredTransmit	552	Collisions	115
LateCollisions	0	SuccessiveCollisions	0
<b>RX</b>			
Bytes	6725348		
UnicastPkts	18575	DropPkts	0
MulticastPkts	5208	PausePkts	0
BroadcastPkts	2041	SuccessiveDisc	0
HeaderSizePkts	0	OverSizePkts	18
JumboPkts	0	Fragment	36
FEC Errors	0	ShortFrames	15275
64 ByteErrors	425	60 to 127 ByteErrors	31413
128 to 255 ByteErrors	4848	128 to 191 ByteErrors	5347
512 to 1023 ByteErrors	1876	192 to 1522 ByteErrors	2808

**Figure 37. Port Statistics**

---

## System Setting

---

The System Setting includes the System name, Location name, Login Timeout, IP Address, Subnet Mask, and Gateway. Through the Web Management Utility, you can easily recognize the device by using the System Name and the Location Name.

The Login Timeout is to set the idle time-out for security issues, When there is no action when running the Web Smart Utility and the time is up, you must re-login to Web Smart Utility before you set the Utility.

Fill in the IP address, Subnet mask, and Gateway for the device or enable DHCP get IP address from DHCP server.

**System Setting**

Web Server Port

System Name

Location Name

Login Timeout  
(3 - 30 minutes)

**IP Address**

Get Dynamic IP from DHCP Server

DHCP server ID

Static IP Address

IP address

Subnet mask

Gateway

**Figure 38.**



---

## Trap Setting

---

The Trap Setting enables the device to monitor the Trap through the Web Management Utility. Set the Trap IP Address of the manager where the trap is to be sent.

Trap Setting

Trap IP	<input type="text" value="192"/> <input type="text" value="168"/> <input type="text" value="0"/> <input type="text" value="24"/>
	VID: <input type="text" value="1"/> <input type="button" value="v"/>
System Events	<input type="checkbox"/> device bootup <input type="checkbox"/> illegal login
Fiber Port Events	<input type="checkbox"/> link up / link down <input type="checkbox"/> abnormal receive error <input type="checkbox"/> abnormal transmit error
Twisted Pair Port Events	<input type="checkbox"/> abnormal receive error <input type="checkbox"/> abnormal transmit error
PoE Events	<input type="checkbox"/> poe power fail <input type="checkbox"/> power on power off <input type="checkbox"/> power overcurrent <input type="checkbox"/> power shortcircuit <input type="checkbox"/> power threshold on/off

Figure 39. Trap Setting

**System Events:** Monitoring the system's trap.

**Device Bootup:** A trap when booting up the system.

**Illegal Login:** A trap when there is an incorrect password login. It will record the IP that attempted to login.

**Fiber Port Events:** Monitoring the Fiber port status.

**Link Up/Link Down:** A trap when there is linking status in the fiber port.

**Abnormal\* Receive Error:** A trap when there is a receive data error in the fiber port.

**Abnormal\* Transmit Error:** A trap when there is a transmit data error in the fiber port.

**Twisted Pair Port Events:** Monitoring the twisted pair port status.

**Abnormal\* Receive Error:** A trap when there is a receive data error in the twisted pair port.

**Abnormal\* Transmit Error:** A trap when there is a transmit data error in the twisted pair port.

***Abnormal\*: 50 error packet count within 10 seconds.***

**PoE Events:** Monitoring the PoE ports status.

**PoE Power fail:** A trap when the port's power source fails or the PD64012 fails.

**Power on/Power off:** A trap when the PoE port's power is on and off.

**Power over current:** A trap when the PoE port's power is over current.

**Power short circuit:** A trap when the PoE port's power circuit was short.

**Power threshold on/off:** A trap when the ratio of the system power supply larger than or smaller than the System power Threshold setting.

---

## Set Password

---

Password is the invaluable tool for the manager to secure the Web Management Switch. You can use this function to change the password.

If you forget the password, press the “Reset” button in the rear panel of the Switch. The current setting includes VLAN, Port Setting... etc. will be lost and the Switch will be restored to the default setting.

### Password Setting

The maximum length is 20 and is case-sensitive.

Old Password	<input type="text"/>
New Password	<input type="text"/>
Re-type New Password	<input type="text"/>

**Figure 40.Set Password**



---

## Backup Setting

---

The backup tools help you to backup the current setting of the Switch. Once you need to backup the setting, press the “**Backup**” button to save the setting.

To restore a current setting file to the device, you must specify the backup file and press the “**Restore**” button to process the setting of the recorded file.

### Backup Setting

Please be aware that the device will reboot after config restore successfully.

Backup current setting to file :

Restore saved setting from file :

Figure 41. Backup Setting

*Note: When restoring a recorded file, the current password will not be erased.*

---

## Reset Setting

---

The Factory Reset button helps you to reset the device back to the default setting from the factory. Be aware that the entire configuration will be reset, the IP address of the device will be retrieved from DHCP server (factory default is DHCP enabled) or the default IP address of 192.168.0.1 will be used when the device fails to retrieve the IP address from DHCP server.

### Factory Reset

Please be aware that all configuration will reset to default value.

A rectangular button with a light blue background and a thin border, containing the text "Factory Reset" in a dark blue font.


**Figure 42. Reset Setting**

---

## Logout

---

When you select this function, the Web configuration will log out and return to first Login page.

A screenshot of a web-based login form. The form has a blue header with the word "Login" in white. Below the header, there is a light blue area containing system information: "System Name :", "Location Name :", "IP Address : 172.16.2.128", and "MAC Address : 00-0D-88-40-58-8B". At the bottom of the form, there is a "Password" label, a white text input field, and a blue "Login" button.

**Figure 43. Logout**

## TECHNICAL SPECIFICATIONS

---

General	
<b>Standards</b>	IEEE 802.3 10BASE-T Ethernet IEEE 802.3u 100BASE-TX Fast Ethernet IEEE 802.3ab 1000BASE-T Gigabit Ethernet IEEE 802.3x Full Duplex Flow Control IEEE 802.3af compliant
<b>Protocol</b>	CSMA/CD
<b>Data Transfer Rate</b>	Ethernet: 10Mbps (half-duplex), 20Mbps (full-duplex) Fast Ethernet: 100Mbps (half-duplex), 200Mbps (full-duplex) Gigabit Ethernet: 2000Mbps (full-duplex)
<b>Topology</b>	Star
<b>Network Cables</b>	10BASE-T: 2-pair UTP Cat. 3, 4, 5; up to 100m 100BASE-TX: 2-pair UTP Cat. 5; up to 100m 1000BASE-T: 4-pair UTP Cat. 5; up to 100m PoE: 4-pair UTP Cat. 5; up to 100m
<b>Number of Ports</b>	24 x 100BASE-TX PoE Ethernet ports 2 x 1000BASE-T Gigabit Ethernet ports 2 x mini-GBIC ports (shared)

<b>Power over Ethernet</b>	
<b>Standard</b>	IEEE 802.3af
<b>Power current</b>	Up to 15.4W per port Maximum 170W per device
<b>PD Classification</b>	Auto PD classification identify
<b>PoE pin assignment</b>	Power(+): pin 3 & pin 6 in RJ-45 Power(-): pin 1 & pin 2 in RJ-45
<b>Safety protection</b>	Over current protect Circuit shortage protect

<b>Physical and Environmental</b>	
<b>AC inputs</b>	100-240V AC, 50-60 Hz internal universal power supply
<b>Power Consumption</b>	9Watts (max. no PD Device connected) 180Watts (max. with 11 x 15.4 w PoE Device connected)
<b>Temperature</b>	Operating: 0° ~ 40° C (32° ~ 104° F), Storage: -10° ~ 70° C (14° ~ 158° F)
<b>Humidity</b>	Operating: 10% ~ 90%, Storage: 5% ~ 90%
<b>Dimensions</b>	440 x 310 x 44 mm
<b>EMI:</b>	FCC Class A, CE Mark Class A, VCCI Class A
<b>Safety:</b>	cUL(UL60950), CB(IEC60950)

<b>Performance</b>	
<b>Transmits Method:</b>	Store-and-forward
<b>Filtering Address Table:</b>	4K entries per device
<b>Packet Filtering/Forwarding Rate:</b>	10Mbps Ethernet: 14,880/pps 100Mbps Fast Ethernet: 148,800/pps 1000Mbps Gigabit Ethernet: 1,488,000/pps
<b>MAC Address Learning:</b>	Automatic update
<b>Transmits Method:</b>	Store-and-forward
<b>RAM Buffer:</b>	768K bytes per device

# Warranty and Registration Information

## (All countries and regions excluding USA and Europe)

### Wichtige Sicherheitshinweise

1. Bitte lesen Sie sich diese Hinweise sorgfältig durch.
2. Heben Sie diese Anleitung für den spätern Gebrauch auf.
3. Vor jedem Reinigen ist das Gerät vom Stromnetz zu trennen. Verwenden Sie keine Flüssig- oder Aerosolreiniger. Am besten dient ein angefeuchtetes Tuch zur Reinigung.
4. Um eine Beschädigung des Gerätes zu vermeiden sollten Sie nur Zubehöerteile verwenden, die vom Hersteller zugelassen sind.
5. Das Gerät ist vor Feuchtigkeit zu schützen.
6. Bei der Aufstellung des Gerätes ist auf sichern Stand zu achten. Ein Kippen oder Fallen könnte Verletzungen hervorrufen. Verwenden Sie nur sichere Standorte und beachten Sie die Aufstellhinweise des Herstellers.
7. Die Belüftungsöffnungen dienen zur Luftzirkulation die das Gerät vor Überhitzung schützt. Sorgen Sie dafür, daß diese Öffnungen nicht abgedeckt werden.
8. Beachten Sie beim Anschluß an das Stromnetz die Anschlußwerte.
9. Die Netzanschlußsteckdose muß aus Gründen der elektrischen Sicherheit einen Schutzleiterkontakt haben.
10. Verlegen Sie die Netzanschlußleitung so, daß niemand darüber fallen kann. Es sollte auch nichts auf der Leitung abgestellt werden.
11. Alle Hinweise und Warnungen die sich am Geräten befinden sind zu beachten.
12. Wird das Gerät über einen längeren Zeitraum nicht benutzt, sollten Sie es vom Stromnetz trennen. Somit wird im Falle einer Überspannung eine Beschädigung vermieden.
13. Durch die Lüftungsöffnungen dürfen niemals Gegenstände oder Flüssigkeiten in das Gerät gelangen. Dies könnte einen Brand bzw. Elektrischen Schlag auslösen.
14. Öffnen Sie niemals das Gerät. Das Gerät darf aus Gründen der elektrischen Sicherheit nur von autorisiertem Servicepersonal geöffnet werden.
15. Wenn folgende Situationen auftreten ist das Gerät vom Stromnetz zu trennen und von einer qualifizierten Servicestelle zu überprüfen:
  - a. Netzkabel oder Netzstecker sind beschädigt.
  - b. Flüssigkeit ist in das Gerät eingedrungen.
  - c. Das Gerät war Feuchtigkeit ausgesetzt.
  - d. Wenn das Gerät nicht der Bedienungsanleitung entsprechend funktioniert oder Sie mit Hilfe dieser Anleitung keine Verbesserung erzielen.

- e. Das Gerät ist gefallen und/oder das Gehäuse ist beschädigt.
  - f. Wenn das Gerät deutliche Anzeichen eines Defektes aufweist.
16. Bei Reparaturen dürfen nur Originalersatzteile bzw. den Originalteilen entsprechende Teile verwendet werden. Der Einsatz von ungeeigneten Ersatzteilen kann eine weitere Beschädigung hervorrufen.
17. Wenden Sie sich mit allen Fragen die Service und Reparatur betreffen an Ihren Servicepartner. Somit stellen Sie die Betriebssicherheit des Gerätes sicher.
18. Zum Netzanschluß dieses Gerätes ist eine geprüfte Leitung zu verwenden, Für einen Nennstrom bis 6A und einem Gerätegewicht größer 3kg ist eine Leitung nicht leichter als H05VV-F, 3G, 0.75mm<sup>2</sup> einzusetzen.

## **WARRANTIES EXCLUSIVE**

IF THE D-LINK PRODUCT DOES NOT OPERATE AS WARRANTED ABOVE, THE CUSTOMER'S SOLE REMEDY SHALL BE, AT D-LINK'S OPTION, REPAIR OR REPLACEMENT. THE FOREGOING WARRANTIES AND REMEDIES ARE EXCLUSIVE AND ARE IN LIEU OF ALL OTHER WARRANTIES, EXPRESSED OR IMPLIED, EITHER IN FACT OR BY OPERATION OF LAW, STATUTORY OR OTHERWISE, INCLUDING WARRANTIES OF MERCHANTABILITY AND FITNESS FOR A PARTICULAR PURPOSE. D-LINK NEITHER ASSUMES NOR AUTHORIZES ANY OTHER PERSON TO ASSUME FOR IT ANY OTHER LIABILITY IN CONNECTION WITH THE SALE, INSTALLATION MAINTENANCE OR USE OF D-LINK'S PRODUCTS.

D-LINK SHALL NOT BE LIABLE UNDER THIS WARRANTY IF ITS TESTING AND EXAMINATION DISCLOSE THAT THE ALLEGED DEFECT IN THE PRODUCT DOES NOT EXIST OR WAS CAUSED BY THE CUSTOMER'S OR ANY THIRD PERSON'S MISUSE, NEGLIGENCE, IMPROPER INSTALLATION OR TESTING, UNAUTHORIZED ATTEMPTS TO REPAIR, OR ANY OTHER CAUSE BEYOND THE RANGE OF THE INTENDED USE, OR BY ACCIDENT, FIRE, LIGHTNING OR OTHER HAZARD.

## **LIMITATION OF LIABILITY**

IN NO EVENT WILL D-LINK BE LIABLE FOR ANY DAMAGES, INCLUDING LOSS OF DATA, LOSS OF PROFITS, COST OF COVER OR OTHER INCIDENTAL, CONSEQUENTIAL OR INDIRECT DAMAGES ARISING OUT THE INSTALLATION, MAINTENANCE, USE, PERFORMANCE, FAILURE OR INTERRUPTION OF A D- LINK PRODUCT, HOWEVER CAUSED AND ON ANY THEORY OF LIABILITY. THIS LIMITATION WILL APPLY EVEN IF D-LINK HAS BEEN ADVISED OF THE POSSIBILITY OF SUCH DAMAGE.

IF YOU PURCHASED A D-LINK PRODUCT IN THE UNITED STATES, SOME STATES DO NOT ALLOW THE LIMITATION OR EXCLUSION OF LIABILITY FOR INCIDENTAL OR CONSEQUENTIAL DAMAGES, SO THE ABOVE LIMITATION MAY NOT APPLY TO YOU.

## **Limited Warranty**

### **Hardware:**

D-Link warrants each of its hardware products to be free from defects in workmanship and materials under normal use and service for a period commencing on the date of purchase from D-Link or its Authorized Reseller and extending for the length of time stipulated by the Authorized Reseller or D-Link Branch Office nearest to the place of purchase.

This Warranty applies on the condition that the product Registration Card is filled out and returned to a D-Link office within ninety (90) days of purchase. A list of D-Link offices is provided at the back of this manual, together with a copy of the Registration Card.

If the product proves defective within the applicable warranty period, D-Link will provide repair or replacement of the product. D-Link shall have the sole discretion whether to repair or replace, and replacement product may be new or reconditioned. Replacement product shall be of equivalent or better specifications, relative to the defective product, but need not be identical. Any product or part repaired by D-Link pursuant to this warranty shall have a warranty period of not less than 90 days, from date of such repair, irrespective of any earlier expiration of original warranty period. When D-Link provides replacement, then the defective product becomes the property of D-Link.

Warranty service may be obtained by contacting a D-Link office within the applicable warranty period, and requesting a Return Material Authorization (RMA) number. If a Registration Card for the product in question has not been returned to D-Link, then a proof of purchase (such as a copy of the dated purchase invoice) must be provided. If Purchaser's circumstances require special handling of warranty correction, then at the time of requesting RMA number, Purchaser may also propose special procedure as may be suitable to the case.

After an RMA number is issued, the defective product must be packaged securely in the original or other suitable shipping package to ensure that it will not be damaged in transit, and the RMA number must be prominently marked on the outside of the package. The package must be mailed or otherwise shipped to D-Link with all costs of mailing/shipping/insurance prepaid. D-Link shall never be responsible for any software, firmware, information, or memory data of Purchaser contained in, stored on, or integrated with any product returned to D-Link pursuant to this warranty.

Any package returned to D-Link without an RMA number will be rejected and shipped back to Purchaser at Purchaser's expense, and D-Link reserves the right in such a case to levy a reasonable handling charge in addition mailing or shipping costs.

#### **Software:**

Warranty service for software products may be obtained by contacting a D-Link office within the applicable warranty period. A list of D-Link offices is provided at the back of this manual, together with a copy of the Registration Card. If a Registration Card for the product in question has not been returned to a D-Link office, then a proof of purchase (such as a copy of the dated purchase invoice) must be provided when requesting warranty service. The term "purchase" in this software warranty refers to the purchase transaction and resulting license to use such software.

D-Link warrants that its software products will perform in substantial conformance with the applicable product documentation provided by D-Link with such software product, for a period of ninety (90) days from the date of purchase from D-Link or its Authorized Reseller. D-Link warrants the magnetic media, on which D-Link provides its software product, against failure during the same warranty period. This warranty applies to purchased software, and to replacement software provided by D-Link pursuant to this warranty, but shall not apply to any update or replacement which may be provided for download via the Internet, or to any update which may otherwise be provided free of charge.

D-Link's sole obligation under this software warranty shall be to replace any defective software product with product which substantially conforms to D-Link's applicable product documentation. Purchaser assumes responsibility for the selection of appropriate application and system/platform software and associated reference materials. D-Link makes no warranty that its software products will work in combination with any hardware, or any application or system/platform software product provided by any third party, excepting only such products as are expressly represented, in D-Link's applicable product documentation as being compatible. D-Link's obligation under this warranty shall be a reasonable effort to provide compatibility, but D-Link shall have no obligation to provide compatibility when there is fault in the third-party hardware or software. D-Link makes no warranty that operation of its software products will be uninterrupted or absolutely error-free, and no warranty that all defects in the software product, within or without the scope of D-Link's applicable product documentation, will be corrected.



Subject to the terms and conditions set forth herein, D-Link Systems, Inc. ("D-Link") provides this Limited Warranty:

- Only to the person or entity that originally purchased the product from D-Link or its authorized reseller or distributor, and
- Only for products purchased and delivered within the fifty states of the United States, the District of Columbia, U.S. Possessions or Protectorates, U.S. Military Installations, or addresses with an APO or FPO.

**Limited Warranty:** D-Link warrants that the hardware portion of the D-Link product described below ("Hardware") will be free from material defects in workmanship and materials under normal use from the date of original retail purchase of the product, for the period set forth below ("Warranty Period"), except as otherwise stated herein.

- Hardware (excluding power supplies and fans): Five (5) Years
- Power supplies and fans: One (1) Year
- Spare parts and spare kits: Ninety (90) days

The customer's sole and exclusive remedy and the entire liability of D-Link and its suppliers under this Limited Warranty will be, at D-Link's option, to repair or replace the defective Hardware during the Warranty Period at no charge to the original owner or to refund the actual purchase price paid. Any repair or replacement will be rendered by D-Link at an Authorized D-Link Service Office. The replacement hardware need not be new or have an identical make, model or part. D-Link may, at its option, replace the defective Hardware or any part thereof with any reconditioned product that D-Link reasonably determines is substantially equivalent (or superior) in all material respects to the defective Hardware. Repaired or replacement hardware will be warranted for the remainder of the original Warranty Period or ninety (90) days, whichever is longer, and is subject to the same limitations and exclusions. If a material defect is incapable of correction, or if D-Link determines that it is not practical to repair or replace the defective Hardware, the actual price paid by the original purchaser for the defective Hardware will be refunded by D-Link upon return to D-Link of the defective Hardware. All Hardware or part thereof that is replaced by D-Link, or for which the purchase price is refunded, shall become the property of D-Link upon replacement or refund.

**Limited Software Warranty:** D-Link warrants that the software portion of the product ("Software") will substantially conform to D-Link's then current functional specifications for the Software, as set forth in the applicable documentation, from the date of original retail purchase of the Software for a period of ninety (90) days ("Software Warranty Period"), provided that the Software is properly installed on approved hardware and operated as contemplated in its documentation. D-Link further warrants that, during the Software Warranty Period, the magnetic media on which D-Link delivers the Software will be free of physical defects. The customer's sole and exclusive remedy and the entire liability of D-Link and its suppliers under this Limited Warranty will be, at D-Link's option, to replace the non-conforming Software (or defective media) with software that substantially conforms to D-Link's

functional specifications for the Software or to refund the portion of the actual purchase price paid that is attributable to the Software. Except as otherwise agreed by D-Link in writing, the replacement Software is provided only to the original licensee, and is subject to the terms and conditions of the license granted by D-Link for the Software. Replacement Software will be warranted for the remainder of the original Warranty Period and is subject to the same limitations and exclusions. If a material non-conformance is incapable of correction, or if D-Link determines in its sole discretion that it is not practical to replace the non-conforming Software, the price paid by the original licensee for the non-conforming Software will be refunded by D-Link; provided that the non-conforming Software (and all copies thereof) is first returned to D-Link. The license granted respecting any Software for which a refund is given automatically terminates.

**Non-Applicability of Warranty:** The Limited Warranty provided hereunder for Hardware and Software portions of D-Link's products will not be applied to and does not cover any refurbished product and any product purchased through the inventory clearance or liquidation sale or other sales in which D-Link, the sellers, or the liquidators expressly disclaim their warranty obligation pertaining to the product and in that case, the product is being sold "As-Is" without any warranty whatsoever including, without limitation, the Limited Warranty as described herein, notwithstanding anything stated herein to the contrary.

**Submitting A Claim:** The customer shall return the product to the original purchase point based on its return policy. In case the return policy period has expired and the product is within warranty, the customer shall submit a claim to D-Link as outlined below:

- The customer must submit with the product as part of the claim a written description of the Hardware defect or Software nonconformance in sufficient detail to allow D-Link to confirm the same, along with proof of purchase of the product (such as a copy of the dated purchase invoice for the product) if the product is not registered.
- The customer must obtain a Case ID Number from D-Link Technical Support at 1-877-453-5465, who will attempt to assist the customer in resolving any suspected defects with the product. If the product is considered defective, the customer must obtain a Return Material Authorization ("RMA") number by completing the RMA form and entering the assigned Case ID Number at <https://rma.dlink.com/>.
- After an RMA number is issued, the defective product must be packaged securely in the original or other suitable shipping package to ensure that it will not be damaged in transit, and the RMA number must be prominently marked on the outside of the package. Do not include any manuals or accessories in the shipping package. D-Link will only replace the defective portion of the product and will not ship back any accessories.
- The customer is responsible for all in-bound shipping charges to D-Link. No Cash on Delivery ("COD") is allowed. Products sent COD will either be rejected by D-Link or become the property of D-Link. Products shall be fully insured by the customer and shipped to **D-Link Systems, Inc., 17595 Mt. Herrmann, Fountain Valley, CA 92708**. D-Link will not be held responsible for any packages that are lost in transit to D-Link. The repaired or replaced packages will be shipped to the customer via UPS Ground or any common carrier selected by D-Link. Return shipping charges shall be prepaid by D-Link if you use

an address in the United States, otherwise we will ship the product to you freight collect. Expedited shipping is available upon request and provided shipping charges are prepaid by the customer.

D-Link may reject or return any product that is not packaged and shipped in strict compliance with the foregoing requirements, or for which an RMA number is not visible from the outside of the package. The product owner agrees to pay D-Link's reasonable handling and return shipping charges for any product that is not packaged and shipped in accordance with the foregoing requirements, or that is determined by D-Link not to be defective or non-conforming.

**What Is Not Covered:** The Limited Warranty provided herein by D-Link does not cover: Products that, in D-Link's judgment, have been subjected to abuse, accident, alteration, modification, tampering, negligence, misuse, faulty installation, lack of reasonable care, repair or service in any way that is not contemplated in the documentation for the product, or if the model or serial number has been altered, tampered with, defaced or removed; Initial installation, installation and removal of the product for repair, and shipping costs; Operational adjustments covered in the operating manual for the product, and normal maintenance; Damage that occurs in shipment, due to act of God, failures due to power surge, and cosmetic damage; Any hardware, software, firmware or other products or services provided by anyone other than D-Link; and Products that have been purchased from inventory clearance or liquidation sales or other sales in which D-Link, the sellers, or the liquidators expressly disclaim their warranty obligation pertaining to the product. While necessary maintenance or repairs on your Product can be performed by any company, we recommend that you use only an Authorized D-Link Service Office. Improper or incorrectly performed maintenance or repair voids this Limited Warranty.

**Disclaimer of Other Warranties:** EXCEPT FOR THE LIMITED WARRANTY SPECIFIED HEREIN, THE PRODUCT IS PROVIDED "AS-IS" WITHOUT ANY WARRANTY OF ANY KIND WHATSOEVER INCLUDING, WITHOUT LIMITATION, ANY WARRANTY OF MERCHANTABILITY, FITNESS FOR A PARTICULAR PURPOSE AND NON-INFRINGEMENT. IF ANY IMPLIED WARRANTY CANNOT BE DISCLAIMED IN ANY TERRITORY WHERE A PRODUCT IS SOLD, THE DURATION OF SUCH IMPLIED WARRANTY SHALL BE LIMITED TO THE DURATION OF THE APPLICABLE WARRANTY PERIOD SET FORTH ABOVE. EXCEPT AS EXPRESSLY COVERED UNDER THE LIMITED WARRANTY PROVIDED HEREIN, THE ENTIRE RISK AS TO THE QUALITY, SELECTION AND PERFORMANCE OF THE PRODUCT IS WITH THE PURCHASER OF THE PRODUCT.

**Limitation of Liability:** TO THE MAXIMUM EXTENT PERMITTED BY LAW, D-LINK IS NOT LIABLE UNDER ANY CONTRACT, NEGLIGENCE, STRICT LIABILITY OR OTHER LEGAL OR EQUITABLE THEORY FOR ANY LOSS OF USE OF THE PRODUCT, INCONVENIENCE OR DAMAGES OF ANY CHARACTER, WHETHER DIRECT, SPECIAL, INCIDENTAL OR CONSEQUENTIAL (INCLUDING, BUT NOT LIMITED TO, DAMAGES FOR LOSS OF GOODWILL, LOSS OF REVENUE OR PROFIT, WORK STOPPAGE, COMPUTER FAILURE OR MALFUNCTION, FAILURE OF OTHER EQUIPMENT OR COMPUTER PROGRAMS TO WHICH D-LINK'S PRODUCT IS CONNECTED WITH, LOSS OF INFORMATION OR DATA CONTAINED IN, STORED ON, OR INTEGRATED WITH ANY PRODUCT RETURNED TO D-LINK FOR WARRANTY SERVICE) RESULTING FROM THE USE OF THE PRODUCT, RELATING TO WARRANTY SERVICE, OR ARISING OUT OF ANY BREACH OF THIS LIMITED WARRANTY, EVEN IF D-LINK HAS BEEN ADVISED OF THE POSSIBILITY OF SUCH DAMAGES. THE SOLE REMEDY FOR A BREACH OF THE FOREGOING LIMITED WARRANTY IS REPAIR, REPLACEMENT OR REFUND OF THE DEFECTIVE OR NON-CONFORMING PRODUCT. THE MAXIMUM LIABILITY OF D-LINK UNDER THIS WARRANTY IS LIMITED TO THE PURCHASE PRICE OF THE PRODUCT COVERED BY THE WARRANTY. THE FOREGOING EXPRESS WRITTEN

WARRANTIES AND REMEDIES ARE EXCLUSIVE AND ARE IN LIEU OF ANY OTHER WARRANTIES OR REMEDIES, EXPRESS, IMPLIED OR STATUTORY.

**Governing Law:** This Limited Warranty shall be governed by the laws of the State of California. Some states do not allow exclusion or limitation of incidental or consequential damages, or limitations on how long an implied warranty lasts, so the foregoing limitations and exclusions may not apply. This Limited Warranty provides specific legal rights and you may also have other rights which vary from state to state.

**Trademarks:** D-Link is a registered trademark of D-Link Systems, Inc. Other trademarks or registered trademarks are the property of their respective owners.

**Copyright Statement:** No part of this publication or documentation accompanying this product may be reproduced in any form or by any means or used to make any derivative such as translation, transformation, or adaptation without permission from D-Link Corporation/D-Link Systems, Inc., as stipulated by the United States Copyright Act of 1976 and any amendments thereto. Contents are subject to change without prior notice. Copyright 2004 by D-Link Corporation/D-Link Systems, Inc. All rights reserved.

**CE Mark Warning:** This is a Class A product. In a residential environment, this product may cause radio interference, in which case the user may be required to take adequate measures.

**FCC Statement:** This equipment has been tested and found to comply with the limits for a Class A digital device, pursuant to part 15 of the FCC Rules. These limits are designed to provide reasonable protection against harmful interference in a commercial installation. This equipment generates, uses, and can radiate radio frequency energy and, if not installed and used in accordance with the instructions, may cause harmful interference to radio communication. However, there is no guarantee that interference will not occur in a particular installation. Operation of this equipment in a residential environment is likely to cause harmful interference to radio or television reception. If this equipment does cause harmful interference to radio or television reception, which can be determined by turning the equipment off and on, the user is encouraged to try to correct the interference by one or more of the following measures:

- Reorient or relocate the receiving antenna.
- Increase the separation between the equipment and receiver.
- Connect the equipment into an outlet on a circuit different from that to which the receiver is connected.
- Consult the dealer or an experienced radio/TV technician for help.

**For detailed warranty information applicable to products purchased outside the United States, please contact the corresponding local D-Link office.**

## *Product Registration*

Register online your D-Link product at <http://support.dlink.com/register/>

**Product registration is entirely voluntary and failure to complete or return this form will not diminish your warranty rights.**

- Trademarks

Copyright 2002 DLink Corporation. Contents subject to change without prior notice. DLink is a registered trademark of D-Link Corporation/ D-Link Systems Inc. All other trademarks belong to their respective proprietors.

- Copyright statement

No part of this publication may be reproduced in any form or by any means or used to make an derivative such as translation, transformation, or adaptation without permission from DLink Corporation/ DLink Systems Inc as stipulated by the United States Copyright Act of 1976.

CE EMI class A warning

This is a Class A product. In a domestic environment, this product may cause radio interference, in which case the user may be required to take adequate measures.

## D-Link Europe Limited Product Warranty

### General Terms

The Limited Product Warranty set forth below is given by D-LINK (Europe) Ltd. (herein referred to as "D-LINK"). This Limited Product Warranty is only effective upon presentation of the proof of purchase. Upon further request by D-LINK, this warranty card has to be presented, too.

EXCEPT AS EXPRESSLY SET FORTH IN THIS LIMITED WARRANTY, D-LINK MAKES NO OTHER WARRANTIES, EXPRESS OR IMPLIED, INCLUDING ANY IMPLIED WARRANTIES OF MERCHANTABILITY AND FITNESS FOR A PARTICULAR PURPOSE. D-LINK EXPRESSLY DISCLAIMS ALL WARRANTIES NOT STATED IN THIS LIMITED WARRANTY. ANY IMPLIED WARRANTIES THAT MAY BE IMPOSED BY LAW ARE LIMITED IN DURATION TO THE LIMITED WARRANTY PERIOD. SOME STATES OR COUNTRIES DO NOT ALLOW A LIMITATION ON HOW LONG AN IMPLIED WARRANTY LASTS OR THE EXCLUSION OR LIMITATION OF INCIDENTAL OR CONSEQUENTIAL DAMAGES FOR CONSUMER PRODUCTS. IN SUCH STATES OR COUNTRIES, SOME EXCLUSIONS OR LIMITATIONS OF THIS LIMITED WARRANTY MAY NOT APPLY TO YOU. THIS LIMITED WARRANTY GIVES YOU SPECIFIC LEGAL RIGHTS. YOU MAY ALSO HAVE OTHER RIGHTS THAT MAY VARY FROM STATE TO STATE OR FROM COUNTRY TO COUNTRY. YOU ARE ADVISED TO CONSULT APPLICABLE STATE OR COUNTRY LAWS FOR

A FULL DETERMINATION OF YOUR RIGHTS.

This limited warranty applies to D-LINK branded hardware products (collectively referred to in this limited warranty as "D-LINK Hardware Products") sold by from D-LINK (Europe) Ltd., its worldwide subsidiaries, affiliates, authorized resellers, or country distributors (collectively referred to in this limited warranty as "D-LINK") with this limited warranty. The Term "D-LINK Hardware Product" is limited to the hardware components and all its internal components including firmware. The term "D-LINK Hardware Product" DOES NOT include any software applications or programs.

## Geographical Scope of the Limited Product Warranty

This Limited Product Warranty is applicable in all European Countries as listed in the addendum "European Countries for D-LINK Limited Product Warranty". The term "European Countries" in this D-LINK Limited Product Warranty only include the countries as listed in this addendum. The Limited Product Warranty will be honored in any country where D-LINK or its authorized service providers offer warranty service subject to the terms and conditions set forth in this Limited Product Warranty. However, warranty service availability and response times may vary from country to country and may also be subject to registration requirements.

## Limitation of Product Warranty

D-LINK warrants that the products described below under normal use are free from material defects in materials and workmanship during the Limited Product Warranty Period set forth below ("Limited Product Warranty Period"), if the product is used and serviced in accordance with the user manual and other documentation provided to the purchaser at the time of purchase (or as amended from time to time). D-LINK does not warrant that the products will operate uninterrupted or error-free or that all deficiencies, errors, defects or non-conformities will be corrected.

This warranty shall not apply to problems resulting from: (a) unauthorised alterations or attachments; (b) negligence, abuse or misuse, including failure to operate the product in accordance with specifications or interface requirements; (c) improper handling; (d) failure of goods or services not obtained from D-LINK or not subject to a then-effective D-LINK warranty or maintenance agreement; (e) improper use or storage; or (f) fire, water, acts of God or other catastrophic events. This warranty shall also not apply to any particular product if any D-LINK serial number has been removed or defaced in any way.

D-LINK IS NOT RESPONSIBLE FOR DAMAGE THAT OCCURS AS A RESULT OF YOUR FAILURE TO FOLLOW THE INSTRUCTIONS FOR THE D-LINK HARDWARE PRODUCT.

## Limited Product Warranty Period

The Limited Product Warranty Period starts on the date of purchase from D-LINK. Your dated sales or delivery receipt, showing the date of purchase of the product, is your proof of the purchase date. You may be required to provide proof of purchase as a condition of receiving warranty service. You are entitled to warranty service according to the terms and conditions of this document if a repair to your D-LINK branded hardware is required within the Limited Product Warranty Period.

This Limited Product Warranty extends only to the original end-user purchaser of this D-LINK Hardware Product and is not transferable to anyone who obtains ownership of the D-LINK Hardware Product from the original end-user purchaser.

Product Type	Product Warranty Period
Managed Switches (i.e. switches with built in SNMP agent)(including modules and management software)	Five (5) years
All other products	Two (2) years
Spare parts (i.e. External Power Adapters, Fans)	One (1) year

The warranty periods listed above are effective in respect of all D-LINK products sold in European Countries by D-LINK or one of its authorized resellers or distributors from 1st of January 2004. All products sold in European Countries by DLINK or one of its authorized resellers or distributors before 1st January 2004 carry 5 years warranty, except power supplies, fans and accessories that are provided with 2 year warranty.

The warranty period stated in this card supersedes and replaces the warranty period as stated in the user's manual or in the purchase contract for the relevant products. For the avoidance of doubt, if you have purchased the relevant D-LINK product as a consumer your statutory rights remain unaffected.

## Performance of the Limited Product Warranty

If a product defect occurs, D-LINK's sole obligation shall be to repair or replace any defective product free of charge to the original purchaser provided it is returned to an Authorized D-LINK Service Center during the warranty period. Such repair or replacement will be rendered by D-LINK at an Authorized D-LINK Service Center. All component parts or hardware products removed under this limited warranty become the property of D-LINK. The replacement part or product takes on the remaining limited warranty status of the removed part or product. The replacement product need not be new or of an identical make, model or part; D-LINK may in its discretion replace the defective product (or any part thereof) with any reconditioned equivalent (or superior) product in all material respects to the defective product. Proof of purchase may be required by D-LINK.

## Warrantor

D-Link (Europe) Ltd.  
4th Floor, Merit House  
Edgware Road  
Colindale  
London NW9 5 AB  
United Kingdom



Telephone: +44-020-8731-5555

Facsimile: +44-020-8731-5511

[www.dlink.co.uk](http://www.dlink.co.uk)

## D-Link Europe Limited Produktgarantie

### Allgemeine Bedingungen

Die hierin beschriebene eingeschränkte Garantie wird durch D-LINK (Europe) Ltd. gewährt (im Folgenden: „D-LINK“). Diese eingeschränkte Garantie setzt voraus, dass der Kauf des Produkts nachgewiesen wird. Auf Verlangen von D-LINK muss auch dieser Garantieschein vorgelegt werden.

AUSSER IN DEM HIER AUSDRÜCKLICH BESCHRIEBENEN UMFANG GEWÄHRT D-LINK KEINE WEITEREN GARANTIEEN, WEDER AUSDRÜCKLICH NOCH STILLSCHWEIGEND. INSBESONDERE WIRD NICHT STILLSCHWEIGEND EINE GARANTIE FÜR DIE ALLGEMEINE GEBRAUCHSTAUGLICHKEIT ODER DIE EIGNUNG FÜR EINEN BESTIMMTEN ZWECK ERKLÄRT. D-LINK LEHNT AUSDRÜCKLICH JEDE GARANTIE AB, DIE ÜBER DIESE EINGESCHRÄNKTE GARANTIE HINAUSGEHT. JEDE GESETZLICH ANGEORDNETE GARANTIE IST AUF DIE LAUFZEIT DER EINGESCHRÄNKTEN GARANTIE BESCHRÄNKT. IN EINIGEN STAATEN ODER LÄNDERN IST DIE ZEITLICHE BESCHRÄNKUNG EINER STILLSCHWEIGEND ERKLÄRTEN GARANTIE SOWIE AUSSCHLUSS ODER BESCHRÄNKUNG VON SCHADENERSATZ FÜR NEBEN- ODER FOLGESCHÄDEN BEIM VERBRAUCHSGÜTERKAUF UNTERSAGT. SOWEIT SIE IN SOLCHEN STAATEN ODER LÄNDERN LEBEN, ENTFALTEN MÖGLICHERWEISE EINIGE AUSSCHLÜSSE ODER EINSCHRÄNKUNGEN DIESER EINGESCHRÄNKTEN GARANTIE GEGENÜBER IHNEN KEINE WIRKUNG. DIESE EINGESCHRÄNKTE GARANTIE GEWÄHRT IHNEN SPEZIFISCHE RECHTE. DARÜBER HINAUS STEHEN IHNEN MÖGLICHERWEISE NOCH WEITERE RECHTE ZU, DIE SICH JEDOCH VON STAAT ZU STAAT ODER VON LAND ZU LAND UNTERSCHIEDEN KÖNNEN. UM DEN UMFANG IHRER RECHTE ZU BESTIMMEN, WIRD IHNEN EMPFOHLEN, DIE ANWENDBAREN GESETZE DES JEWEILIGEN STAATES ODER LANDES ZU RATE ZU ZIEHEN.

Diese eingeschränkte Garantie ist auf Hardware-Produkte der Marke D-LINK (insgesamt im Folgenden: „D-LINK Hardware-Produkte“) anwendbar, die von D-LINK (Europe) Ltd. oder dessen weltweiten Filialen, Tochtergesellschaften, Fachhändlern oder Länderdistributoren (insgesamt im Folgenden: „D-LINK“) mit dieser eingeschränkten Garantie verkauft wurden. Der Begriff „D-LINK Hardware-Produkte“ beinhaltet nur Hardwarekomponenten und deren Bestandteile einschließlich Firmware. Der Begriff „D-LINK Hardware-Produkte“ umfasst KEINE Software-Anwendungen oder -programme.

### Räumlicher Geltungsbereich der eingeschränkten Garantie

Diese eingeschränkte Garantie gilt für alle genannten europäischen Staaten gemäß dem Anhang „Eingeschränkte Garantie von D-LINK in europäischen Staaten“. Im Rahmen dieser eingeschränkten Garantie sind mit dem Begriff „europäische Staaten“ nur die im Anhang genannten Staaten gemeint. Die eingeschränkte Garantie findet überall Anwendung, wo D-LINK oder dessen autorisierte Servicepartner Garantiedienste gemäß den Bestimmungen dieser eingeschränkten Garantie erbringen. Gleichwohl kann sich die Verfügbarkeit von Garantiediensten und die Bearbeitungszeit von Land zu Land unterscheiden und von Registrierungsanforderungen abhängig sein.

### Einschränkung der Garantie

D-LINK gewährleistet, dass die nachstehend aufgeführten Produkte bei gewöhnlicher Verwendung für die unten angegebene Laufzeit der eingeschränkten Garantie („Garanzilaufzeit“) frei von wesentlichen Verarbeitungs- und Materialfehlern sind. Voraussetzung hierfür ist jedoch, dass das Produkt entsprechend dem Benutzerhandbuch und den weiteren Dokumentationen, die der Benutzer beim Kauf (oder später) erhalten hat, genutzt und gewartet wird. D-LINK garantiert nicht, dass die Produkte störungs- oder fehlerfrei arbeiteten oder dass alle Mängel, Fehler, Defekte oder Kompatibilitätsstörungen beseitigt werden können.

Diese Garantie gilt nicht für Probleme wegen: (a) unerlaubter Veränderung oder Hinzufügung, (b) Fahrlässigkeit, Missbrauch oder Zweckentfremdung, einschließlich des Gebrauchs des Produkts entgegen den Spezifikationen oder den durch Schnittstellen gegebenen Vorgaben, (c) fehlerhafter Bedienung, (d) Versagen von Produkten oder Diensten, die nicht von D-LINK stammen oder nicht Gegenstand einer zum maßgeblichen Zeitpunkt gültigen Garantie- oder Wartungsvereinbarung sind, (e) Fehlgebrauch oder fehlerhafter Lagerung oder (f) Feuer, Wasser, höherer Gewalt oder anderer Katastrophen. Diese Garantie gilt ebenfalls nicht für Produkte, bei denen eine D-LINK-Seriennummer entfernt oder auf sonstige Weise unkenntlich gemacht wurde.

D-LINK STEHT NICHT FÜR SCHÄDEN EIN, DIE DADURCH ENTSTEHEN, DASS DIE ANLEITUNG FÜR DAS D-LINK HARDWARE-PRODUKT NICHT BEFOLGT WIRD.

## Laufzeit der eingeschränkten Garantie

Die Laufzeit der eingeschränkten Garantie beginnt mit dem Zeitpunkt, zu dem das Produkt von D-LINK gekauft wurde. Als Nachweis für den Zeitpunkt des Kaufs gilt der datierte Kauf- oder Lieferbeleg. Es kann von Ihnen verlangt werden, dass Sie zur Inanspruchnahme von Garantiediensten den Kauf des Produkts nachweisen. Wenn Ihre Hardware-Produkte der Marke D-LINK innerhalb der Laufzeit der eingeschränkten Garantie eine Reparatur benötigen, so sind Sie berechtigt, gemäß den Bedingungen dieser eingeschränkten Garantie Garantiedienste in Anspruch zu nehmen.

Diese eingeschränkte Garantie gilt nur für denjenigen, der das D-LINK Hardware-Produkt ursprünglich als originärer Endbenutzer gekauft hat. Sie ist nicht auf Dritte übertragbar, die das D-LINK-Produkt von dem ursprünglichen originären Endbenutzer erworben haben.

Produkttyp	Gewährleistungslaufzeit
Verwaltete Switches (d. h. Switches mit eingebauten SNMP-Agents) (einschließlich Modulen und Verwaltungssoftware)	Fünf (5) Jahre
Alle weiteren Produkte	Zwei (2) Jahre
Ersatzteile (z.B. externe Netzteile, Lüfter)	Ein (1) Jahr

Die oben aufgeführten Garantielaufzeiten gelten für alle D-LINK-Produkte, die in europäischen Staaten ab dem 1. Januar 2004 von D-LINK oder einem autorisierten Fachhändler oder Distributor verkauft werden. Alle vor dem 1. Januar 2004 von D-LINK oder einem autorisierten Vertragshändler oder Distributor verkauften Produkte haben eine Gewährleistung von 5 Jahren; ausgenommen sind Netzteile, Lüfter und Zubehör, diese haben eine Garantie von 2 Jahren.

Die durch diesen Garantieschein festgelegte Garantielaufzeit tritt an die Stelle der im Benutzerhandbuch oder im Kaufvertrag für das jeweilige Produkt angegebenen Laufzeit. Sollten Sie das betreffende D-LINK-Produkt als Verbraucher erworben haben, so sei klargestellt, dass Ihre gesetzlichen Rechte hiervon unberührt bleiben.

## Leistungsumfang der eingeschränkten Garantie

Bei Auftreten eines Produktfehlers besteht die einzige Verpflichtung von D-LINK darin, dem ursprünglichen Käufer das defekte Produkt kostenlos zu reparieren oder es auszutauschen. Voraussetzung hierfür ist, dass das Produkt während der Garantielaufzeit einem autorisierten BLINK-Servicecenter übergeben wird. Reparatur oder Austausch werden von BLINK durch ein autorisiertes BLINK-Servicecenter durchgeführt. Bauteile oder Hardware-Produkte, die gemäß dieser eingeschränkten Garantie entfernt werden, gehen in das Eigentum von D-LINK über. Die verbliebene eingeschränkte Garantie des entfernten Teils oder Produkts wird auf das Ersatzteil oder -produkt übertragen. Das Austauschprodukt muss weder neu sein noch dem defekten Produkt ganz oder in Teilen entsprechen. D-LINK darf dieses nach eigenem Ermessen gegen ein entsprechendes wiederaufbereitetes Produkt austauschen, welches dem defekten Produkt im Wesentlichen entspricht (oder höherwertig ist). D-LINK kann verlangen, dass der Kauf des Produkts nachgewiesen wird.

DIE VORSTEHENDE GARANTIE WURDE IN DIE DEUTSCHE SPRACHE AUS DEM ENGLISCHEN ÜBERSETZT. BEI ABWEICHUNGEN ZWISCHEN DER ENGLISCHEN VERSION UND DER DEUTSCHEN ÜBERSETZUNG GELTEN DIE BESTIMMUNGEN DER ENGLISCHEN VERSION.

## Garantiegeber

D-Link (Europe) Ltd.  
4th Floor, Merit House  
Edgware Road  
Colindale  
London NW9 5 AB  
Vereinigtes Königreich

Telefon: +44-020-8731-5555

Fax: +44-020-8731-5511

[www.dlink.com](http://www.dlink.com)

# D-Link Europe a limité la garantie des produits

## Conditions Générales

La Garantie Produit Limitée énoncée ci-dessous émane de D-LINK (Europe) Ltd. (ci-après « D-LINK »). Cette Garantie Produit Limitée n'est valable que sur présentation de la preuve d'achat. D-LINK peut également exiger la présentation du présent bon de garantie.

SAUF INDICATION EXPLICITE DES PRESENTES, D-LINK NE FOURNIT AUCUNE AUTRE GARANTIE, EXPLICITE OU IMPLICITE, Y COMPRIS UNE GARANTIE IMPLICITE DE VALEUR MARCHANDE OU D'ADAPTATION DU PRODUIT A UN USAGE PRECIS. D-LINK DECLINE EXPLICITEMENT TOUTE GARANTIE NON ENONCEE DANS LES PRESENTES. TOUTE GARANTIE IMPLICITE IMPOSEE PAR LA LOI, LE CAS ECHEANT, EST LIMITEE DANS SA DUREE A CELLE DE LA GARANTIE LIMITEE. CERTAINS ETATS OU PAYS NE PERMETTENT PAS DE LIMITER LA DUREE DE LA GARANTIE IMPLICITE OU INTERDISENT D'EXCLURE OU DE LIMITER LA COUVERTURE DES DOMMAGES DIRECTS OU INDIRECTS OCCASIONNES AUX PRODUITS GRAND PUBLIC. DANS LES ETATS OU PAYS EN QUESTION, CERTAINES EXCLUSIONS OU LIMITATIONS DE LA PRESENTE GARANTIE PEUVENT NE PAS S'APPLIQUER A VOTRE CAS. LA PRESENTE GARANTIE LIMITEE VOUS OCTROIE CERTAINS DROITS LEGAUX SPECIFIQUES. VOUS POUVEZ EGALEMENT BENEFICIER D'AUTRES DROITS VARIABLES D'UN ETAT OU D'UN PAYS A L'AUTRE. NOUS VOUS RECOMMANDONS DE CONSULTER LA LEGISLATION EN VIGUEUR DANS VOTRE LIEU DE RESIDENCE POUR CONNAITRE L'ETENDUE DE VOS DROITS.

La présente garantie limitée s'applique aux produits matériels commercialisés sous la marque **D-LINK** (collectivement ici « les Produits Matériels D-LINK ») vendus par D-LINK (Europe) Ltd., ses filiales, sociétés affiliées, revendeurs agréés ou distributeurs locaux à travers le monde (collectivement ici « D-LINK ») avec la présente garantie limitée. Le terme de « Produit Matériel D-LINK » se limite aux composants matériels et à l'ensemble de leurs composants internes, notamment le firmware. Le terme de « Produit Matériel D-LINK » N'englobe PAS les applications ou programmes logiciels.

## Etendue géographique de la Garantie Produit Limitée

La présente Garantie Produit Limitée s'applique à tous les pays européens figurant dans l'annexe « Pays européens où s'applique la Garantie Produit Limitée D-LINK ». Le terme de « pays européens » utilisé dans la présente Garantie Produit Limitée D-LINK englobe uniquement les pays figurant dans la liste en annexe. La Garantie Produit Limitée sera honorée dans tout pays où D-LINK ou ses prestataires agréés proposent le service de garantie, sous réserve des modalités énoncées dans la présente Garantie Produit Limitée. Cependant, la disponibilité du service de garantie et les temps de réponse varient d'un pays à l'autre et peuvent également être assujettis à un enregistrement.

## Limitation de la Garantie Produit

D-LINK garantit que les produits décrits ci-dessous, dans le cadre d'une utilisation normale, sont dénués de défauts conséquents, tant au niveau de leurs composants matériels que de leur fabrication, et ce pendant toute la Période de Garantie Produit Limitée indiquée ci-dessous (« Période de Garantie Produit Limitée »), sous réserve

qu'ils soient utilisés et entretenus conformément au manuel utilisateur et aux autres documents remis au client lors de l'achat (ou amendés de temps à autre). D-LINK ne garantit pas le fonctionnement ininterrompu ou sans erreur de ses produits. D-LINK ne s'engage pas non plus à corriger tous les défauts, erreurs ou non conformités.

La présente garantie ne s'applique pas aux problèmes qui sont la conséquence : (a) d'altérations ou d'ajouts non autorisés ; (b) d'une négligence, d'un abus ou d'une mauvaise utilisation, notamment une utilisation du produit non conforme à ses spécifications ou aux interfaces requises ; (c) d'une mauvaise manipulation ; (d) d'une panne de biens ou de services acquis auprès d'une société tierce (non D-LINK) ou qui ne font pas l'objet d'un contrat D-LINK de garantie ou de maintenance en bonne et due forme ; (e) d'une mauvaise utilisation ou d'un rangement dans des conditions inadéquates ; ou (f) du feu, de l'eau, d'une catastrophe naturelle ou autre. La présente garantie ne s'applique pas non plus à un produit dont le numéro de série D-LINK aurait été retiré ou altéré de quelque manière que ce soit.

**D-LINK N'EST NULLEMENT RESPONSABLE DE DOMMAGES RESULTANT DE VOTRE INOBSERVATION DES INSTRUCTIONS FOURNIES POUR L'UTILISATION DE SON PRODUIT MATERIEL.**

## Période de Garantie Produit Limitée

La Période de Garantie Produit Limitée court à compter de la date d'achat auprès de D-LINK. La date de votre reçu ou bon de livraison correspond à la date d'achat du produit et constitue la date de votre preuve d'achat. Il est possible que le service de garantie ne vous soit accordé que sur production de votre preuve d'achat. Vous avez droit à un service de garantie conforme aux modalités énoncées dans les présentes dès lors que votre matériel de marque D-LINK nécessite une réparation pendant la Période de Garantie Produit Limitée.

La présente Garantie Produit Limitée s'applique uniquement à l'acheteur utilisateur final initial du Produit Matériel D-LINK. Elle est non cessible à quiconque se procure le Produit Matériel D-LINK auprès de l'acheteur utilisateur final initial.

Type de produit	Période de Garantie
Switches gérés (switches comportant un agent SNMP intégré)(y compris modules et logiciels de gestion)	Cinq (5) ans
Tous autres produits	Deux (2) ans
Pièces détachées (adaptateurs d'alimentation externes, ventilateurs)	Un (1) an

Les périodes de garantie indiquées ci-dessus s'appliquent à tous les produits D-LINK vendus depuis le 1er janvier 2004 dans les pays européens par D-LINK ou l'un de ses revendeurs ou distributeurs agréés. Tous les produits vendus avant le 1er janvier 2004 dans les pays européens par D-LINK ou l'un de ses revendeurs ou distributeurs agréés bénéficient d'une garantie de 5 ans, excepté les fournitures électriques, ventilateurs et accessoires, qui sont couverts par une garantie de 2 ans.

La période de garantie indiquée sur ce bon annule et remplace celle qui figure dans le manuel utilisateur ou dans le contrat d'achat des produits considérés. Pour éviter le doute, si vous avez acheté votre produit D-LINK en tant que consommateur, vos droits légaux demeurent inchangés.

## Exécution de la Garantie Produit Limitée

En cas de défaut ou d'erreur d'un produit, l'unique obligation de D-LINK se limite à la réparation ou au remplacement gratuit du produit défectueux, au bénéfice de l'acheteur initial, sous réserve que le produit soit rapporté à un Centre de Service Agréé D-LINK pendant la période de garantie. D-LINK assure la réparation ou le remplacement dans un Centre de Service Agréé D-LINK. Les composants, pièces ou produits retirés dans le cadre de cette garantie limitée deviennent propriété de D-LINK. La pièce ou le produit de remplacement est couvert par la garantie limitée de la pièce ou du produit d'origine pendant la période restante. Le produit de remplacement n'est pas nécessairement neuf, ni d'une marque ou d'un modèle identique ; D-LINK peut décider, de manière discrétionnaire, de remplacer le produit défectueux (ou ses pièces) par un équivalent (ou un article supérieur) reconditionné ayant toutes les fonctionnalités du produit défectueux. D-LINK peut exiger la preuve d'achat.

## Garant

D-Link (Europe) Ltd.  
4th Floor, Merit House  
Edgware Road  
Colindale  
London NW9 5 AB  
Royaume-Uni

Tél : +44-020-8731-5555

Fax : +44-020-8731-5511

[www.dlink.co.uk](http://www.dlink.co.uk)

# Garantía limitada del producto D-LINK Europa

## Condiciones generales

Esta garantía a la ofrece D-LINK (Europe) Ltd. (en este documento, "D-LINK"). La garantía limitada del producto sólo es válida si se acompaña del comprobante de la compra. También deberá presentarse la tarjeta de garantía a si D-LINK lo solicita.

EXCEPTO EN LO EXPRESAMENTE INDICADO EN ESTA GARANTÍA LIMITADA, D-LINK NO CONCEDE OTRAS GARANTÍAS, NI EXPLÍCITAS NI IMPLÍCITAS, INCLUIDAS LAS GARANTÍAS IMPLÍCITAS DE COMERCIALIDAD Y APTITUD A UN FIN DETERMINADO. D-LINK RECHAZA EXPLÍCITAMENTE CUALQUIER GARANTÍA A QUE NO FIGURE EN ESTA GARANTÍA LIMITADA. LA DURACIÓN DE CUALQUIER GARANTÍA IMPLÍCITA QUE PUEDA SER IMPUESTA POR LEY QUEDA LIMITADA AL PERÍODO DE LA GARANTÍA LIMITADA. ALGUNOS ESTADOS O PAÍSES NO PERMITEN QUE EN LA GARANTÍA LIMITADA DE PRODUCTOS DE CONSUMO SE RESTRINJA LA DURACIÓN TEMPORAL, NI QUE SE EXCLUYAN O LIMITEN LOS DAÑOS INCIDENTALES O RESULTANTES PARA EL CONSUMIDOR DE LOS PRODUCTOS. EN ESTOS ESTADOS O PAÍSES, A USTED NO LE PUEDEN APLICAR ALGUNAS EXCLUSIONES O LIMITACIONES DE LA GARANTÍA LIMITADA. ESTA GARANTÍA LIMITADA LE CONCEDE DETERMINADOS DERECHOS. PUEDE, TAMBIÉN, TENER OTROS DERECHOS, QUE PUEDEN SER DISTINTOS DE UN ESTADO A OTRO O DE UN PAÍS A OTRO. SE RECOMIENDA QUE CONSULTE LAS LEYES PERTINENTES DE UN ESTADO O PAÍS A FIN DE QUE CONOZCA SUS DERECHOS.

Esta garantía limitada se aplica a los productos de hardware de la marca D-LINK (llamados en esta guía a "Productos de hardware D-LINK") comprados a D-LINK (Europe) Ltd., a sus filiales en el mundo, a sus proveedores autorizados o a sus distribuidores locales (llamados en este documento "D-LINK") con esta garantía limitada. El término "producto de hardware D-LINK" se restringe a los componentes de hardware y a los componentes internos de estos, incluyendo el firmware. El término "producto de hardware D-LINK" NO incluye ni las aplicaciones ni los programas de software.

## Cobertura geográfica de la garantía a limitada del producto

Esta garantía limitada del producto es válida en todos los países europeos que figuran en el apéndice "Países europeos de la garantía a limitada del producto D-LINK". En esta garantía a limitada del producto D-LINK, el término "países europeos" sólo incluye los países que figuran en el apéndice. La garantía a limitada del producto será válida en cualquier país en el que D-LINK o sus proveedores autorizados de servicios ofrezcan un servicio de garantía a sujeto a los términos y condiciones recogidos en esta garantía a limitada del producto. Sin embargo, la disponibilidad del servicio de garantía a, así como el tiempo de respuesta, pueden variar de un país a otro y pueden estar sujetos a requisitos de registro.

## Limitación de la garantía a del producto



D-LINK garantiza que los productos descritos más adelante están libres de defectos de fabricación y materiales, en condiciones normales de uso, a lo largo del período de la garantía limitada del producto que se indica en este documento ("período de la garantía limitada del producto"), si el producto se ha utilizado y mantenido conforme a lo recogido en el manual del usuario o en otra documentación que se haya proporcionado al comprador en el momento de la compra (o que se haya corregido). D-LINK no garantiza que los productos funcionarán sin interrupciones o sin errores, ni que se corregirán todas las deficiencias, errores, defectos o disconformidades.

Esta garantía a no cubre problemas derivados de: (a) modificaciones o conexiones no autorizadas; (b) negligencia, abuso o mal uso, incluyendo el incumplimiento de las especificaciones y de los requisitos de la interfaz en el funcionamiento del producto; (c) manejo incorrecto; (d) errores en artículos o servicios ajenos a D-LINK o no sujetos a una garantía o un contrato de mantenimiento vigentes de D-LINK; (e) uso o almacenamiento incorrecto; o (f) fuego, agua, casos fortuitos u otros hechos catastróficos. Esta garantía a tampoco es válida para aquellos productos a los que se haya eliminado o alterado de algún modo el número de serie D-LINK.

**D-LINK NO SE RESPONSABILIZA DE LOS DAÑOS CAUSADOS COMO CONSECUENCIA DEL INCUMPLIMIENTO DE LAS INSTRUCCIONES DEL PRODUCTO DE HARDWARE D-LINK.**

## Período de la garantía a limitada del producto

El período de la garantía a limitada del producto se inicia en la fecha en que se realizó la compra a D-LINK. Para el comprador, el comprobante de la fecha de la compra es el recibo de la venta o de la entrega, en el que figura la fecha de la compra del producto. Puede ser necesario tener que presentar el comprobante de la compra a fin de que se preste el servicio de garantía a. El comprador tiene derecho al servicio de garantía a conforme a los términos y condiciones de este documento, si requiere una reparación del hardware de la marca D-LINK dentro del período de garantía a limitada del producto.

Esta garantía a limitada del producto cubre sólo al originario comprador-usuario final de este producto de hardware D-LINK, y no es transferible a otras personas que reciban el producto de hardware D-LINK del originario comprador-usuario final.

Tipo de producto	Período de garantía a del producto
Conmutadores gestionados (p. ej., conmutadores con agente SNMP integrado) (incluyendo módulos y software de gestión)	Cinco (5) años
Resto de productos	Dos (2) años
Piezas de repuesto (p. ej., adaptadores de alimentación externos, ventiladores)	Un (1) año

Estos períodos de garantía a están en vigor para todos los productos D-LINK que hayan sido comprados en países europeos a D-LINK o a alguno de sus proveedores o distribuidores autorizados a partir del 1 de enero del 2004.

Todos los productos comprados en países europeos a D-LINK o a uno de sus proveedores o distribuidores autorizados antes del 1 de enero del 2004 cuentan con 5 años de garantía, excepto las fuentes de alimentación, los ventiladores y los accesorios, que cuentan con 2 años de garantía.

El período de garantía a que figura en esta tarjeta sustituye y reemplaza al período de garantía a que consta en el manual del usuario o en el contrato de compra de los productos correspondientes. Para evitar dudas: si usted ha comprado el producto D-LINK correspondiente como consumidor, sus derechos legales no se ven afectados.

## Uso de la garantía limitada del producto

Si un producto presenta algún defecto, la obligación exclusiva de D-LINK será reparar o reemplazar, sin coste alguno para el comprador originario, cualquier producto defectuoso siempre y cuando éste sea entregado en un centro autorizado de servicio D-LINK durante el período de garantía. D-LINK realizará la reparación o sustitución para un centro autorizado de servicio D-LINK. Todos los productos de hardware o componentes que se eliminen bajo esta garantía limitada serán propiedad de D-LINK. La parte o el producto de repuesto adquiere, para el resto de la garantía limitada, el estatus de parte o producto eliminado. El producto de repuesto no ha de ser nuevo o de la misma marca, modelo o parte; D-LINK puede sustituir a discreción el producto defectuoso (o cualquier parte) con un producto equivalente reacondicionado (o superior) en cualquier material respecto al producto defectuoso. D-LINK puede pedir el comprobante de compra.

## Garante

D-Link (Europe) Ltd.  
4th Floor, Merit House  
Edgware Road  
Colindale  
London NW9 5 AB  
United Kingdom

Teléfono: +44-020-8731-5555

Fax: +44-020-8731-5511

[www.dlink.co.uk](http://www.dlink.co.uk)

# D-Link Europe Termini di Garanzia dei Prodotti

## Generalità

La presente Garanzia viene fornita da D-LINK (Europe) Ltd. (di seguito denominata "D-LINK"). Essa viene riconosciuta solo se accompagnata dalla prova di acquisto. D-LINK può richiedere anche l'esibizione della presente cartolina di garanzia.

**SALVO QUANTO ESPRESSAMENTE STABILITO NELLA PRESENTE GARANZIA LIMITATA, D-LINK NON FORNISCE NESSUN'ALTRA GARANZIA NE' ESPRESSA NE' IMPLICITA, COMPRESSE EVENTUALI GARANZIE DI COMMERCIALIZZABILITÀ O DI IDONEITÀ PER UN PARTICOLARE SCOPO. D-LINK NEGA ESPRESSAMENTE QUALUNQUE ALTRA GARANZIA CHE NON RIENTRI NELLA PRESENTE GARANZIA LIMITATA. QUALSIASI GARANZIA IMPLICITA, CHE DOVESSE ESSERE IMPOSTA PER LEGGE, SARÀ CIRCOSCRITTA ALLA DURATA DELLA PRESENTE GARANZIA. ALCUNI PAESI VIETANO QUALSIASI LIMITAZIONE DEL PERIODO DI VALIDITÀ DELLE GARANZIE IMPLICITE OPPURE L'ESCLUSIONE O LA LIMITAZIONE DEI DANNI INCIDENTALI O CONSEGUENZIALI PER I PRODOTTI. IN TALI PAESI, EVENTUALI ESCLUSIONI O LIMITAZIONI DELLA PRESENTE GARANZIA NON POTRANNO APPLICARSI AL VOSTRO CASO. LA PRESENTE GARANZIA VI CONFERISCE DIRITTI LEGALI SPECIFICI. INOLTRE POTRETE GODERE DI ULTERIORI DIRITTI CHE POSSONO VARIARE A SECONDA DEL PAESE. SIETE INVITATI A CONSULTARE LE LEGGI APPLICABILI DEL VOSTRO PAESE AL FINE DI DETERMINARE CON PRECISIONE I VOSTRI DIRITTI.**

La presente garanzia trova applicazione su tutti i prodotti hardware recanti il marchio D-LINK (di seguito denominati collettivamente "Prodotti hardware D-LINK") venduti da D-LINK (Europe) Ltd., dalle sue controllate, dalle sue affiliate, dai rivenditori autorizzati o dai distributori nazionali (di seguito denominati collettivamente "D-LINK"), accompagnati dalla presente garanzia limitata. Il termine "Prodotto hardware D-LINK" si riferisce esclusivamente ai componenti hardware e a tutte le parti interne compreso il firmware. Il termine "Prodotto hardware D-LINK" NON comprende eventuali applicazioni o programmi software.

## Ambito geografico della Garanzia limitata

La presente Garanzia è estesa a tutti i Paesi europei elencati nell'appendice "Paesi europei - Garanzia limitata dei prodotti D-LINK". Il termine "Paesi europei" si riferisce esclusivamente ai paesi nominati in questa appendice. La Garanzia verrà riconosciuta in tutti i paesi nei quali D-LINK o i suoi Centri di Assistenza autorizzati offrono assistenza conformemente alle condizioni e ai termini stabiliti nella presente Garanzia. Tuttavia, la disponibilità all'assistenza e i tempi di intervento variano da paese a paese e possono essere soggetti a eventuali requisiti di registrazione.

## Limitazione della Garanzia

D-LINK garantisce che i prodotti sotto descritti in condizioni di normale utilizzo non presentano difetti di fabbricazione o vizi di materiale durante il Periodo di garanzia sotto specificato ("Periodo di garanzia"), a condizione che vengano utilizzati e sottoposti a manutenzione in conformità con il manuale d'uso e con ogni altra documentazione fornita all'acquirente all'atto dell'acquisto (e relativi emendamenti). D-LINK non garantisce che il

funzionamento del prodotto sarà ininterrotto o esente da errori né tanto meno che tutti gli eventuali errori, carenze, difetti o non conformità potranno essere corretti.

La presente garanzia non copre eventuali problemi derivanti da: (a) alterazioni o aggiunte non autorizzate; (b) negligenza, abuso o utilizzo improprio, compresa l'incapacità di far funzionare il prodotto in conformità con le specifiche e i requisiti di connessione; (c) movimentazione impropria; (d) guasto di prodotti o servizi non forniti da D-LINK o non soggetti a una garanzia successiva di D-LINK o a un accordo di manutenzione; (e) impiego o conservazione impropri; (f) incendio, inondazione, cause di forza maggiore o altro evento catastrofico accidentale. La presente garanzia non si applica altresì ad alcun prodotto particolare qualora il numero di serie di D-LINK sia stato rimosso o reso illeggibile in altro modo.

D-LINK DECLINA OGNI RESPONSABILITÀ PER EVENTUALI DANNI RISULTANTI DAL MANCATO RISPETTO DELLE ISTRUZIONI RELATIVE AL PRODOTTO HARDWARE D-LINK.

## Periodo di garanzia

Il Periodo di garanzia ha decorrenza dalla data dell'acquisto presso D-LINK. Prova della data di acquisto è il documento fiscale (scontrino fiscale o ricevuta) recante la data di acquisto del prodotto. Per avere diritto alla garanzia può esservi richiesto di esibire la prova di acquisto. Potete beneficiare delle prestazioni di assistenza previste dalla garanzia in conformità con i termini e le condizioni di cui sotto nel momento in cui il Vostro prodotto hardware D-LINK necessita di una riparazione durante il Periodo di garanzia.

La presente Garanzia si applica esclusivamente al primo acquirente del Prodotto hardware D-LINK e non può essere trasferita a terzi che abbiano ottenuto la proprietà del Prodotto hardware D-LINK dal primo acquirente.

Tipo di prodotto	Periodo di garanzia
Switch (solo switch dotati di agente SNMP incorporato) (inclusi moduli e software di gestione)	5 (cinque) anni
Tutti gli altri prodotti	2 (due) anni
Pezzi di ricambio (es. adattatori esterni di potenza, alimentatori esterni, ventole)	1 (un) anno

Il periodo di garanzia sopra specificato relativamente a tutti i prodotti D-LINK venduti nei Paesi europei da D-LINK o da qualsiasi suo rivenditore o distributore autorizzato decorre dal 1° gennaio 2004. Tutti i prodotti venduti nei Paesi europei da D-LINK o da uno qualsiasi dei suoi rivenditori o distributori autorizzati prima del 1° gennaio 2004 sono coperti da una garanzia di 5 anni fatto salvo per alimentatori, ventole e accessori che hanno 2 anni di garanzia.

Il periodo di garanzia qui menzionato sostituisce qualsiasi altro periodo di garanzia definito nel manuale d'uso o nel contratto di acquisto del prodotto. Se avete acquistato un prodotto D-LINK in qualità di consumatore i Vostri diritti rimangono invariati.

## Prestazioni della Garanzia limitata

Qualora comparisse un difetto o una non conformità, D-LINK avrà l'unico obbligo di riparare o sostituire il prodotto non conforme senza alcun costo per l'acquirente a condizione che il prodotto venga restituito a un Centro di Assistenza autorizzato D-LINK entro il periodo di garanzia. La riparazione o la sostituzione verranno eseguite da D-LINK presso un Centro di Assistenza autorizzato D-LINK. Tutti i componenti o i prodotti hardware rimossi conformemente ai termini e alle condizioni della presente garanzia divengono di proprietà di D-LINK. Il pezzo o il prodotto in sostituzione beneficerà della garanzia per il tempo residuo della parte o del prodotto originale. Il prodotto in sostituzione non deve necessariamente essere nuovo o di identica fattura, modello o composizione; D-LINK può a sua discrezione sostituire il prodotto non conforme (o qualsiasi parte di esso) con un prodotto che risulti essere equivalente (o di valore superiore) al prodotto non conforme. D-LINK può richiedere che venga esibita la prova di acquisto.

## Garante

D-Link (Europe) Ltd.  
4th Floor, Merit House  
Edgware Road  
Colindale  
Londra NW9 5 AB  
Regno Unito

Telefono: +44-020-8731-5555

Fax: +44-020-8731-5511

[www.dlink.co.uk](http://www.dlink.co.uk)

## Free Manuals Download Website

<http://myh66.com>

<http://usermanuals.us>

<http://www.somanuals.com>

<http://www.4manuals.cc>

<http://www.manual-lib.com>

<http://www.404manual.com>

<http://www.luxmanual.com>

<http://aubethermostatmanual.com>

Golf course search by state

<http://golfingnear.com>

Email search by domain

<http://emailbydomain.com>

Auto manuals search

<http://auto.somanuals.com>

TV manuals search

<http://tv.somanuals.com>