



DSL-100D
ADSL PCI Modem
User's Guide

First Edition Version 2 (April 2001)

6DSL100D..02

TABLE OF CONTENTS

| | |
|--|-----------|
| ABOUT THIS GUIDE | II |
| PURPOSE..... | II |
| BEFORE YOU BEGIN..... | II |
| INTRODUCTION | 1 |
| FEATURES..... | 1 |
| <i>System Requirements</i> | 1 |
| <i>Operating Systems:</i> | 2 |
| GATHER INFORMATION | 2 |
| <i>Determine Your Operating System</i> | 2 |
| <i>Internet Service Protocol</i> | 3 |
| <i>Connection Address and Configuration</i> | 3 |
| <i>Configuration Form</i> | 4 |
| STEP 1..... | 5 |
| HARDWARE INSTALLATION | 5 |
| STEP 2..... | 6 |
| SOFTWARE INSTALLATION AND CONFIGURATION | 6 |
| INSTALL SOFTWARE DRIVER | 6 |
| <i>Windows 98/98SE Driver Installation</i> | 7 |
| <i>Windows 95 Driver Installation</i> | 10 |
| <i>Windows 2000 Driver Installation</i> | 12 |
| <i>Windows ME Driver Installation</i> | 16 |
| <i>Windows NT 4.0 Driver Installation</i> | 19 |
| CONFIGURE MODEM..... | 23 |
| <i>Configure Modem for Windows 95/98/98SE, Windows ME and Windows NT 4.0</i> | 23 |
| <i>Configure Modem for Windows 2000</i> | 25 |
| STEP 3..... | 28 |
| CONNECT TO INTERNET | 28 |
| RFC 2364 PPPOA USERS | 28 |
| FOR RFC 1483 AND RFC 1577 USERS..... | 30 |
| <i>Windows 95 and Windows 98 (RFC 1483/RFC 1577)</i> | 30 |
| <i>Windows 2000 (RFC 1483/RFC 1577)</i> | 31 |
| CONTACTING TECHNICAL SUPPORT | 32 |
| MODEM INDICATORS..... | 35 |
| DIAGNOSTIC ICON FUNCTION..... | 35 |
| <i>LED Indicators</i> | 35 |
| UNINSTALL THE MODEM..... | 35 |
| TECHNICAL SPECIFICATIONS..... | 36 |
| LIMITED WARRANTY..... | 38 |

About This Guide

Congratulations on your purchase of the ADSL PCI Modem Card for Windows® 95, 98, 2000 Me and NT 4.0. This internal modem card connects to a telephone line using a standard RJ-11 connector and follows all the latest PC industry guidelines, including Plug and Play.

Purpose

The purpose of this manual is to discuss the installation and use of your ADSL PCI Modem Card.

Before you Begin

This manual has all the information you need to install and configure the PCI Modem card and it will walk you through the steps. However, it is very important that you follow each step and gather the information you will need before you begin. This will make the installation smoother and easier. Be sure to read each instruction before you begin.

Introduction

This section describes the ADSL PCI modem card, its features, and system requirements.

Features

The ADSL PCI Modem Card is an internal PCI device designed for use with Windows 95, 98, 2000, Me and NT 4.0. This modem card connects to an ADSL/telephone line using a standard RJ-11 connector and follows all the latest PC industry guidelines, including Plug 'n Play. For added convenience, an additional RJ-11 receptacle provides an outlet for a standard telephone or fax machine. To insure interoperability with service provider DSL systems your ADSL modem card supports DMT (Discrete Multi-Tone) modulation.

Performance features:

- Remote bridging with RFC 1483 encapsulation, both LLC-SNAP and VC multiplexing options
- Classical IP over ATM per RFC 1577
- PPP (Point-to-Point Protocol) over ATM per RFC 2364
- Full LCP: NBCP, IPCP, and IPXCP
- Authentication: PAP, CHAP, SPAP, and Microsoft(r) password encryption extensions
- TAPI style interface
- Van Jacobsen IP header compression
- Software frame compression LED indicators:
 - Link – indicates a valid ADSL connection
 - Data – indicates data is currently being transferred via the ADSL connection

System Requirements

D-Link recommends that your PC system meet the following minimum requirements to be able to use the ADSL PCI Modem Card:

- An IBM PC or compatible computer with a Pentium 100Mhz or faster processor
- 30 megabytes of free hard disk space
- 32 megabytes or more of main memory (RAM)
- A 8x or faster CD-ROM drive
- Microsoft Windows 95, 95 OSR2, 98, 98 Second Edition, 2000, Windows Millennium Edition or NT 4.x (Service Pack 3 or above)

Operating Systems:

- Windows 95, 95 OSR2
- Windows 98, 98 Second Edition
- Windows 2000
- Windows Me
- Windows NT 4.0

NOTE: You will need the original Windows operating system installation CD-ROM to complete the installation.

The installation procedure varies according to the operating system you are using. It is critical that you use the correct installation procedure for your operating system.

Gather Information

To make connecting and configuring your modem as easy and straightforward as possible, gather the information listed on the form that follows. Fill out the appropriate sections of the form for your operating system and ISP. Refer to the information during the installation and store the form in case you need to update the information at a later date.

If you are using Windows 95, you must upgrade your Dial-Up Networking (DUN) application to version 1.3 or above. Do this by running “MSDUN13.EXE” located on the Driver CD. The Microsoft DUN is also available for download from Microsoft at www.microsoft.com.

Determine Your Operating System

You must use the correct installation procedure for your operating system. If you are not sure exactly which operating system you are using, follow the instructions and write down the information on the form provided.

Follow these steps to determine your operating system:

1. Go to the Windows desktop. Right click on My Computer and select Properties.
2. Click on the General tab. The version number of your operating system is displayed. Refer to the table for more detailed information.

| SYSTEM DESCRIPTION | VERSION | RELEASE NAME |
|--------------------|-------------|------------------------------------|
| Win 95A | 4.00.950 | Windows 95 |
| Win 95B | 4.00.950 B | Windows 95 OSR2 |
| Win 98 | 4.10.1998 | Windows 98 |
| Win 98SE | 4.10.2222 A | Windows 98 2 nd Edition |
| Win 2000 | 5.00.2195 | Windows 2000 |
| Win Me | 4.90.3000 | Windows Millennium Edition |
| Win NT | 4.00.1381 | Windows NT 4.0 |

Internet Service Protocol

Your Internet Service Provider (ISP) uses one of the protocols listed below. Look over the information provided by your ISP or call their technical support if you are not sure which protocol they are using.

- RFC 2364 Point-to-Point Protocol over ATM
- RFC 1483 Multi-protocol Encapsulation over ATM, a.k.a. “Bridged Ethernet”
- RFC 1577 Classical Internet Protocol over ATM

Connection Address and Configuration

You need to know the connection address and configuration information for your ISP.

Configuration Form

Before beginning the installation, photocopy or print this page and fill out the form provided. Refer to this form when you reach the Service Options panel and enter the proper configurations.

| ADSL COMMUNICATION SETTINGS: | |
|-------------------------------------|---|
| Protocol: | RFC 1483 Multi-protocol Encapsulation over ATM RFC 2364 Point-to-Point Protocol over ATM RFC 1577 Classical Internet Protocol over ATM |
| VPI value: | |
| VCI value: | |
| Framing: | LLC/SNAP VC MUX |
| ADSL Mode: | ANSI T1.413 Issue 2 ITU G.992.2 Annex A (G.lite) ITU G.992.1 Annex A (G.dmt) |

| NETWORK CONFIGURATION FOR RFC 1483 (MULTI-PROTOCOL ENCAPSULATION OVER ATM) AND RFC 1577 (CLASSICAL IP OVER ATM): |
|---|
| IP Address: |
| Subnet Mask: |
| Gateway: |
| DNS Host Name: |
| DNS Domain: |
| DNS Server: |

| ACCOUNT INFORMATION FOR RFC 2364 POINT-TO-POINT PROTOCOL OVER ATM |
|--|
| User Name: |
| Password: |

Step 1

Hardware Installation

The card must be installed on the computer's motherboard. Since this is an electrical device, safety is important. First, properly shutdown the computer and unplug the computer's power cord. Touch an unpainted screw on the back of the power supply with the tip of your screwdriver to discharge any static electricity and prevent possible damage to the card and computer components. Open the computer's case.

Insert the card into an open PCI slot. Insert the card straight in and gently push straight down until it seats firmly and has good connection. Screw the bracket on the back of the card to the case so the card is firmly held in place.

Put the case back on the computer and plug the power cord back in. The physical installation of the card is now complete.

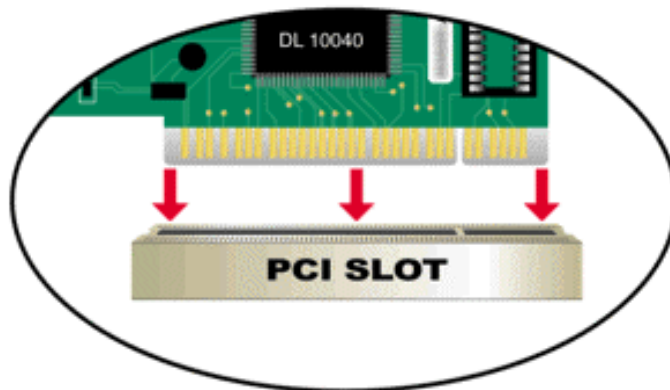


Figure 1: Insert the into the PCI slot.

Step 2

Software Installation and Configuration

Windows will automatically detect new hardware when it is added to the computer. The Add New Hardware Wizard will appear to guide you through the Software Installation.

In order for the Modem to work you must configure it properly. The following sections show you the steps. You must enter the proper configurations for the DSLAM. You will enter one of the following:

- VPI
- VCI
- Framing Method
- ADSL Mode

The Digital Subscriber Line Access Multiplexer (DSLAM) is a machine at the phone company's central office that links many DSL connections to a single high speed Internet connection. Please refer to your DSL provider's documentation for information on the settings you should use. If you have questions about these settings, contact your DSL provider. Your DSL provider can tell you the specific configurations that you need.

Install Software Driver

For Windows 95, 98/98SE, 2000 and ME users, the device will be detected when you restart the PC. The Plug-and-Play installation will walk you through the entire process. Follow the installation steps in this guide for the operating system you are using. Windows NT 4.0 does not support the Plug-and-Play feature but you can use the step-by-step instructions in this installation guide.

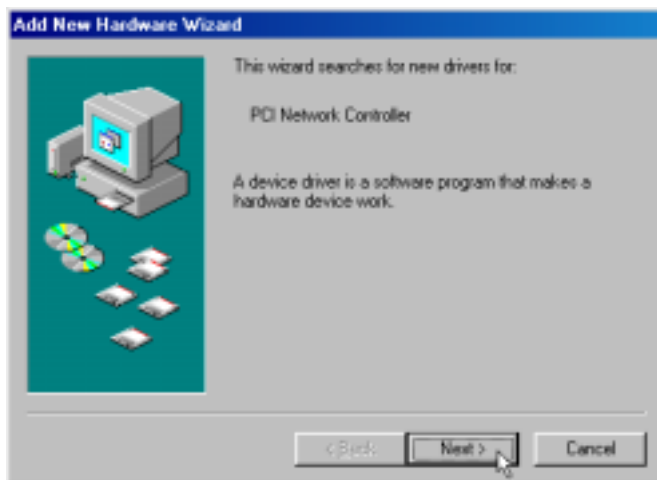
The drivers for the device are specific to the Windows operating system with which they are used. The following table lists the names of the driver folders each operating system and protocol.

| WINDOWS OS | RFC 1483 (MPoA) | RFC 1577 (IPoA) | RFC 2364 (PPPoA) |
|---------------|-----------------|-----------------|------------------|
| Win 95/95OSR2 | 1483W95 | 1577W95 | 2364W95 |
| Win 98/98SE | 1483W98 | 1577W98 | 2364W98 |
| Win NT 4.0 | 1483NT4 | 1577NT4 | 2364NT4 |
| Win 2000 | 1483W2K | 1577W2K | 2364W2K |
| Win Me | 1483WME | 1577WME | 2364WME |

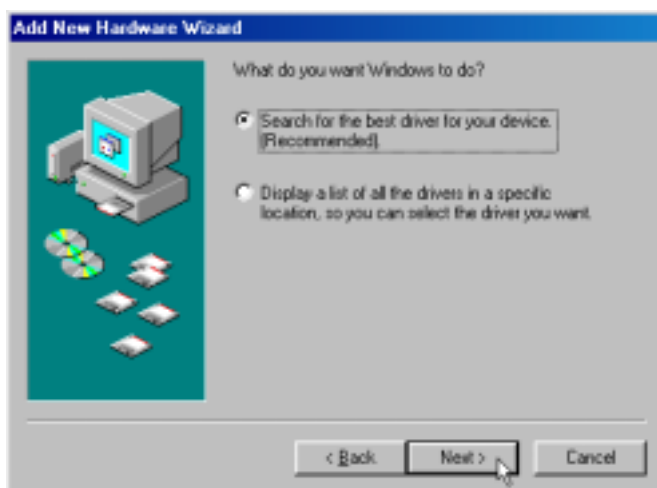
Follow the instructions appropriate to your system after you have installed the PCI Modem and restarted the PC.

Windows 98/98SE Driver Installation

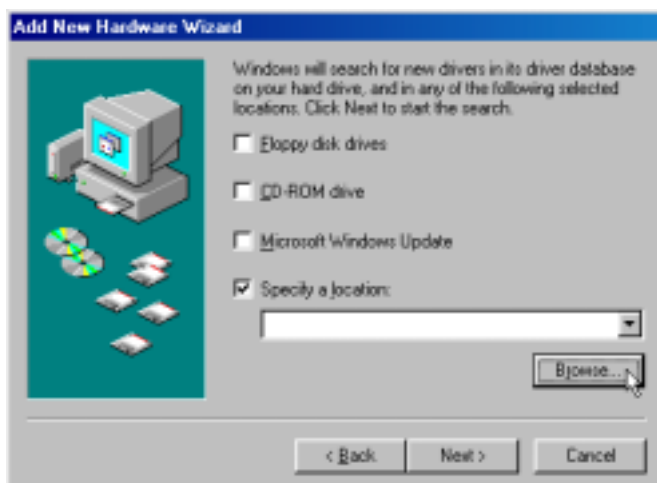
1. The **Add New Hardware Wizard** window automatically appears and indicates that the new PCI Network Controller (PCI Modem) has been found. Click **Next**.



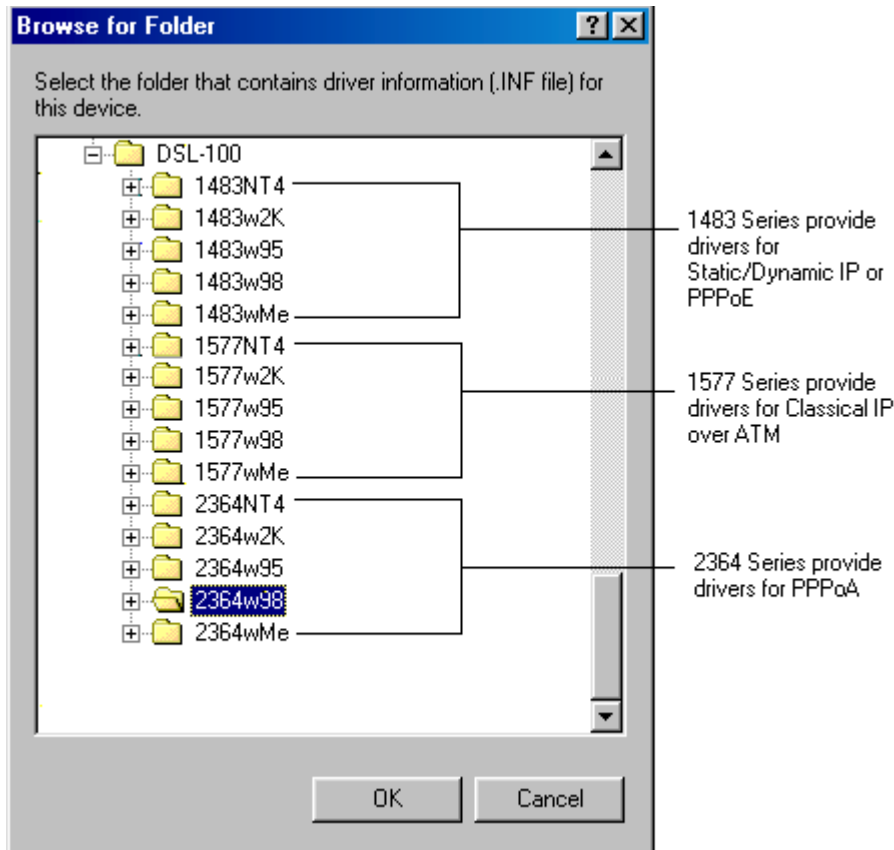
2. Still in the **Add New Hardware** window, you will be asked 'What do you want Windows to do?' Select 'Search for the best driver for your device,' then click **Next**.



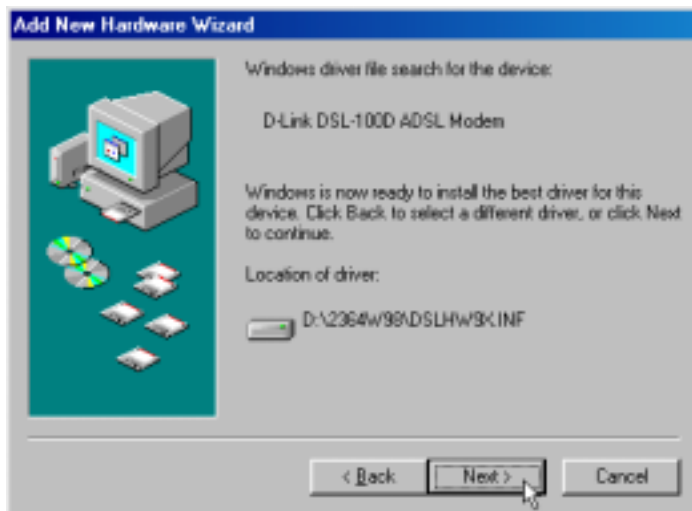
3. Insert the driver CD.
4. Choose "Specify a location" and click **Browse**.



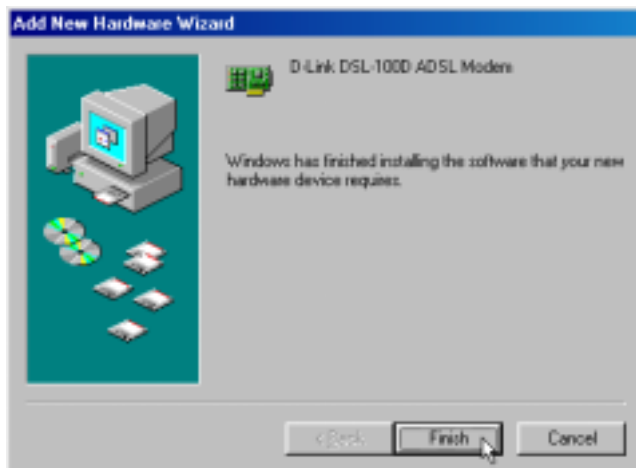
5. Find the folder 1483w98, 1577w98, or 2364w98 (according to the protocol used by your ISP) on the CD-ROM drive and click **OK**.



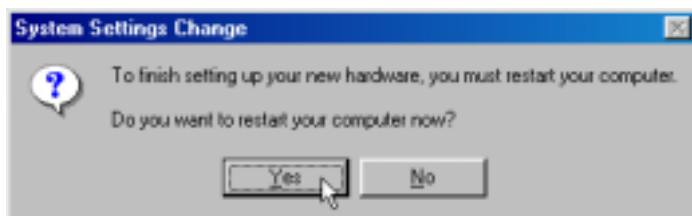
6. Again the **Add New Hardware Wizard** window appears indicating the location of the driver. Click **Next** to install the driver.



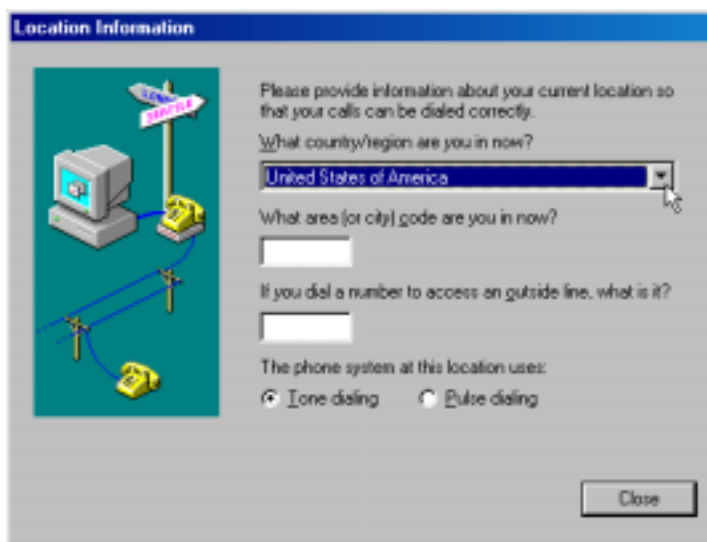
7. After the driver has finished installing, click **Finish**.



8. You must restart the computer to finish the installation. You can do that now if you wish.



9. If you install the RFC2364 (PPPoA) driver, after you restart, the **Location Information** window appears automatically. Choose the country and enter the area code where you are located. Click **Close** when you are finished. You next need to configure the device. Proceed to the section on Configuration.



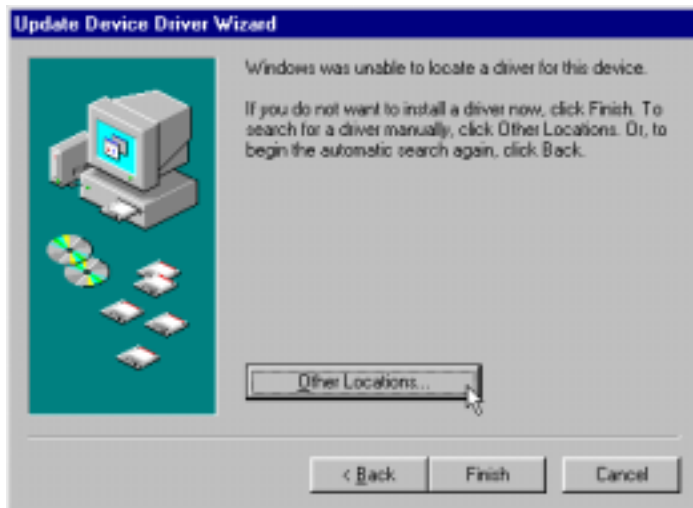
Windows 95 Driver Installation

If you want to install the RFC2364 (PPPoA) driver, you must upgrade the Dial-Up Networking Application. The self-executing file is located on the Driver CD. The file name is 'MSDUN13.EXE'. Double-click on this file to update Dial-up Networking. You will be prompted to restart your computer after running the application. After you install the modem, start the computer and the follow these instructions.

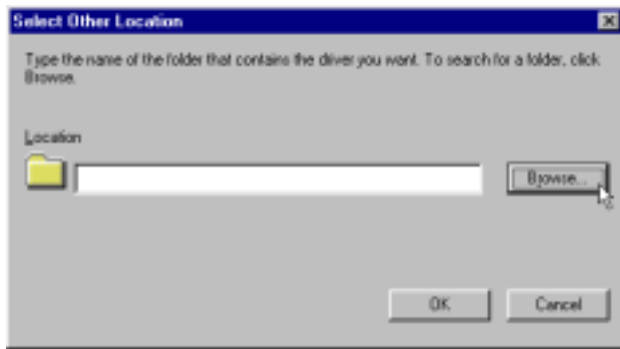
1. The **Update Device Driver Wizard** prompts you to begin the installation of the PCI Network Controller (PCI Modem). Insert the driver CD and click **Next**.



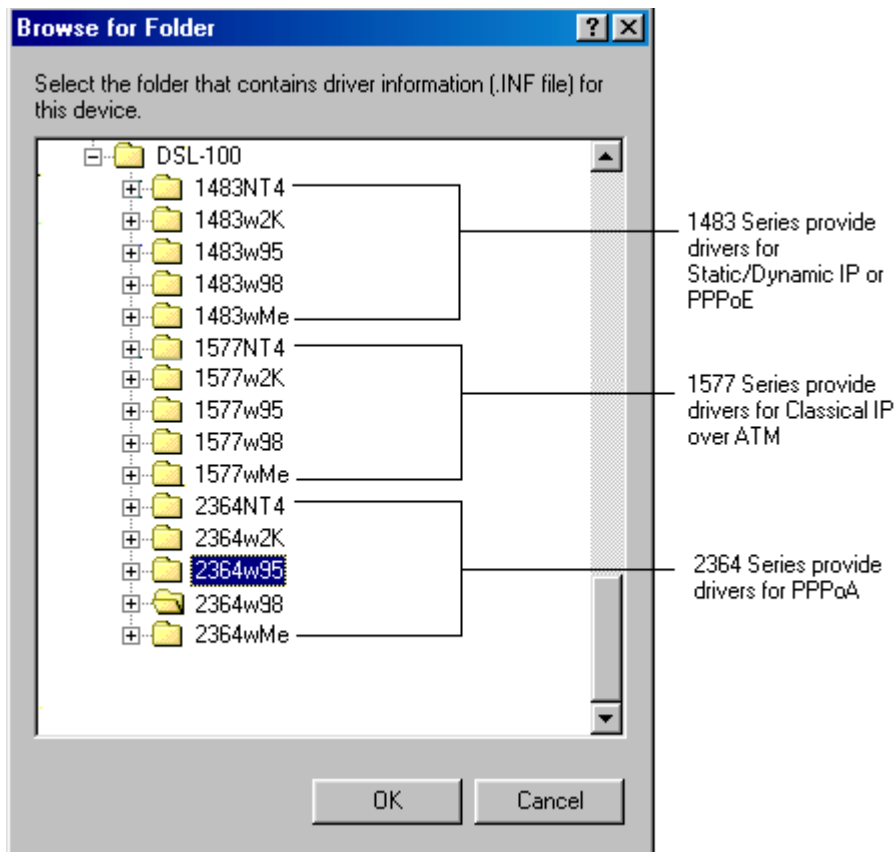
2. You will need to search for the driver. Click **Other Locations...** to continue.



3. In the **Select Other Location** window, click **Browse** to search for the driver on your CD-ROM drive.

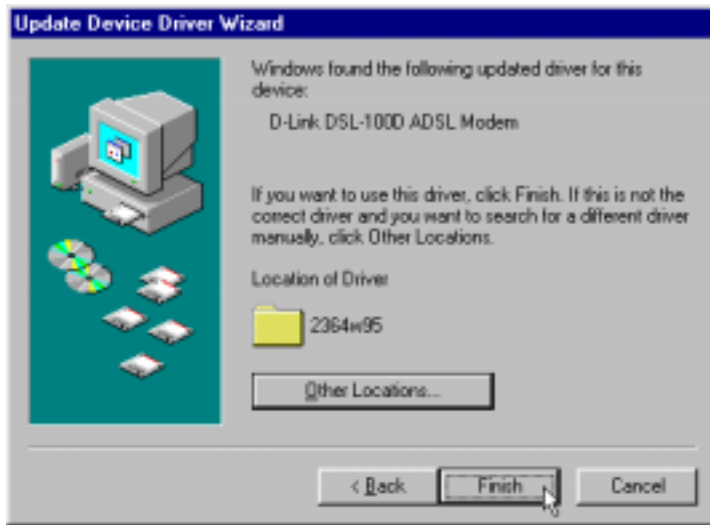


4. Find the folder 1483w95, 1577w95, or 2364w95 (according to the protocol used by your ISP) on the CD-ROM drive.

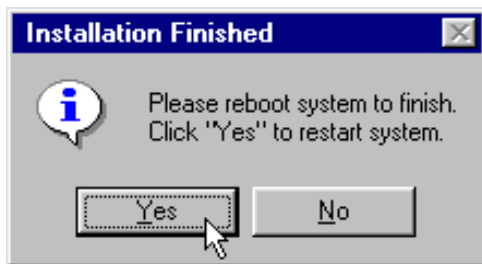


Click **OK**.

5. The driver is now ready to be installed. Click **Finish** to install it.



6. You must restart the computer to finish the installation. After you have restarted, you will next need to configure the device. Proceed to the section on Configuration.



Windows 2000 Driver Installation

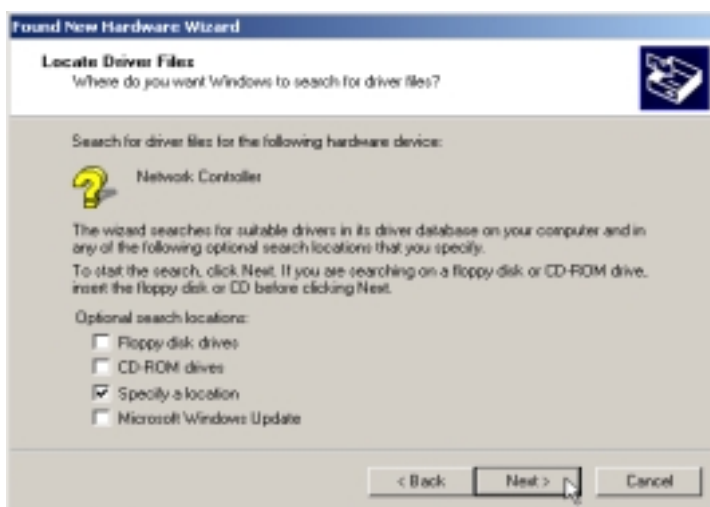
1. The **Found New Hardware Wizard** window will automatically appear. Click **Next**.



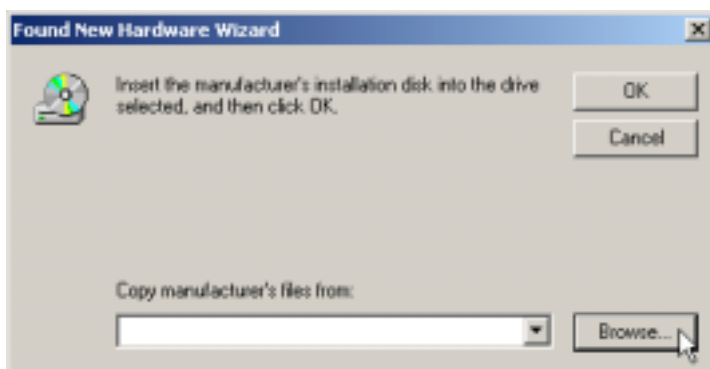
2. The **Found New Hardware Wizard** explains that it can install the driver for the Network Controller (PCI Modem). Select “Search for a suitable driver...” and click **Next** to proceed.



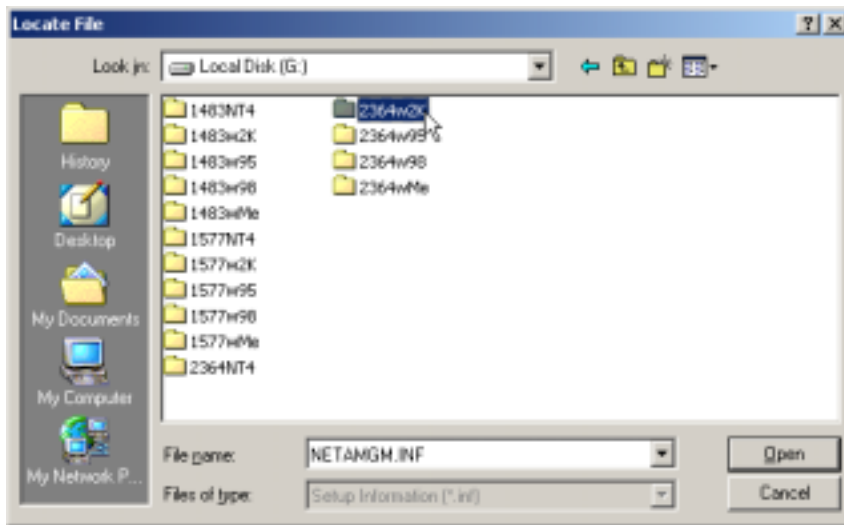
3. You will be asked where you want the computer to search for the driver. Select the “Specify a location...” option. Insert the Driver CD and click **Next**.



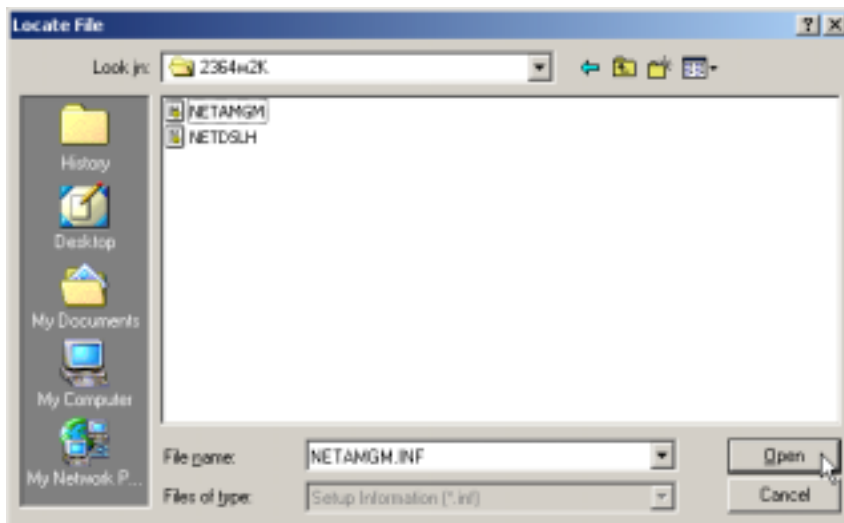
4. Click **Browse** to search the CD for the driver folder.



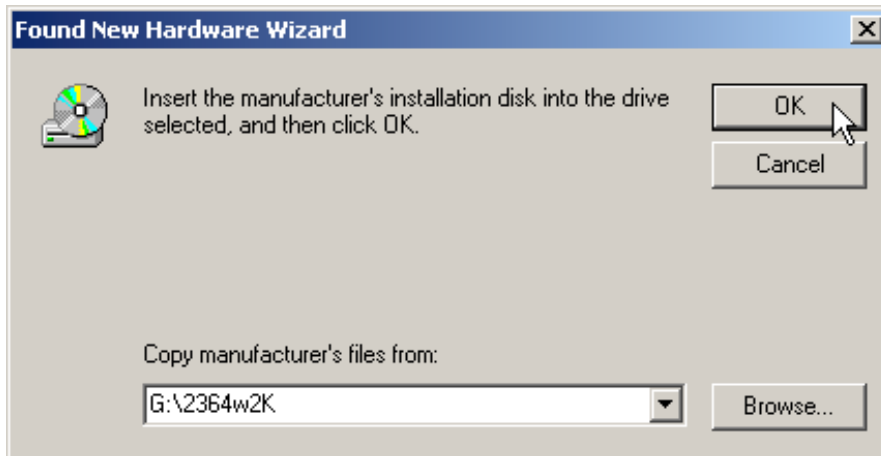
5. Find the folder 1483w2k, 1577w2k, or 2364w2k (according to the protocol used by your ISP) and double-click on it to open it. Or highlight it and click **Open**.



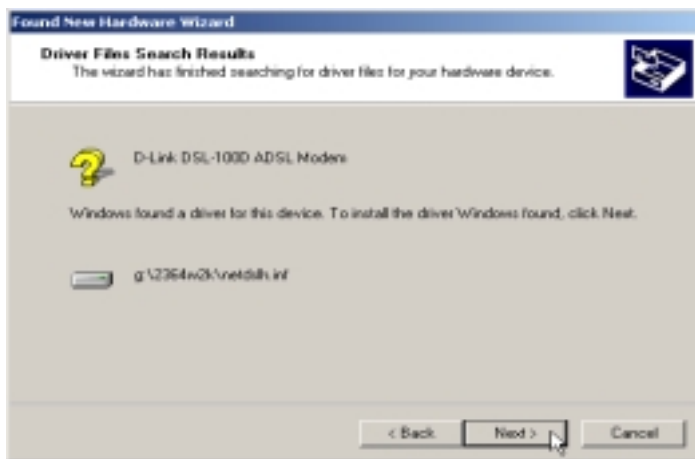
6. Click **Open** to proceed to the next window.



- The driver folder location will now appear in the Found New Hardware Wizard window. Click **OK**.



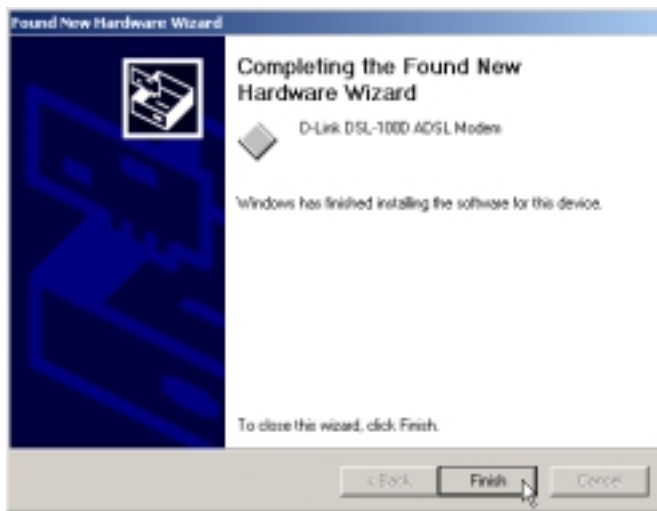
- The driver is now ready to be installed. Check to be sure the driver file path is correct and click **Next**.



- A warning appears telling you the Microsoft digital signature has not been found. D-Link has thoroughly tested the driver for Windows 2000. Click **Yes** to continue.

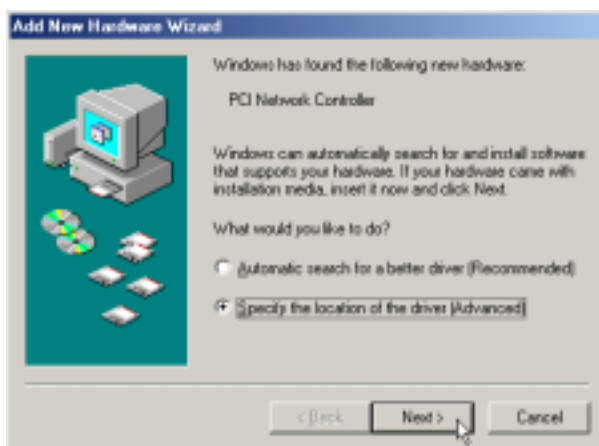


10. Windows has completed the driver installation. Click **Finish** and proceed to the Configuration section of this guide.

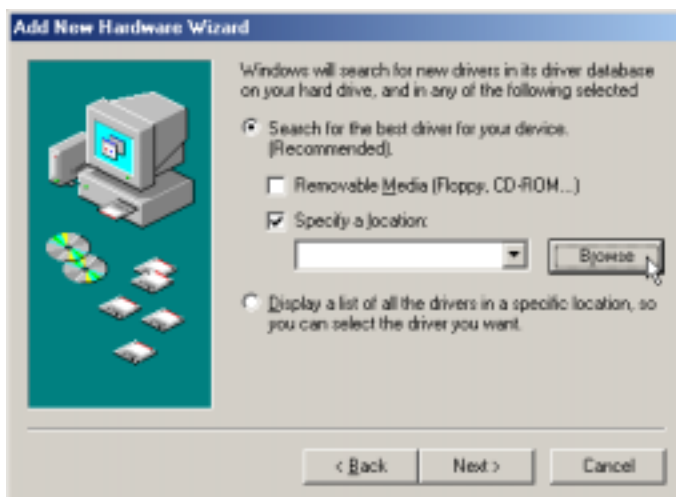


Windows ME Driver Installation

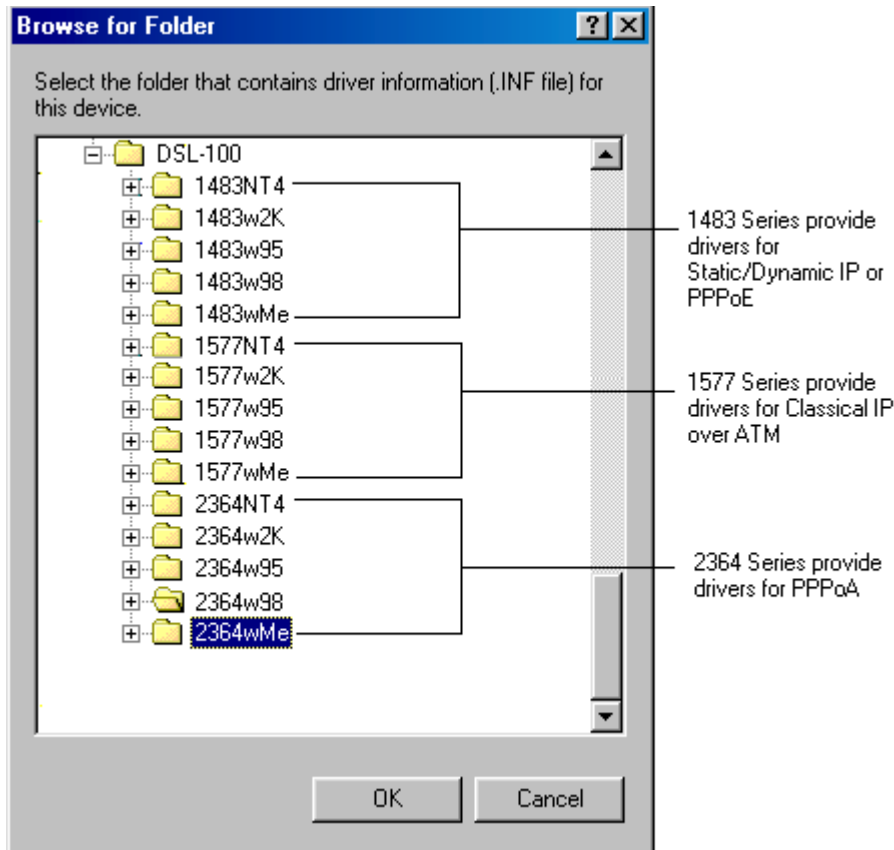
1. The **Add New Hardware Wizard** window will automatically appear and indicate that the new PCI Network Controller (PCI Modem) has been found. Click **Next**. Insert the driver CD into the CD-ROM drive.



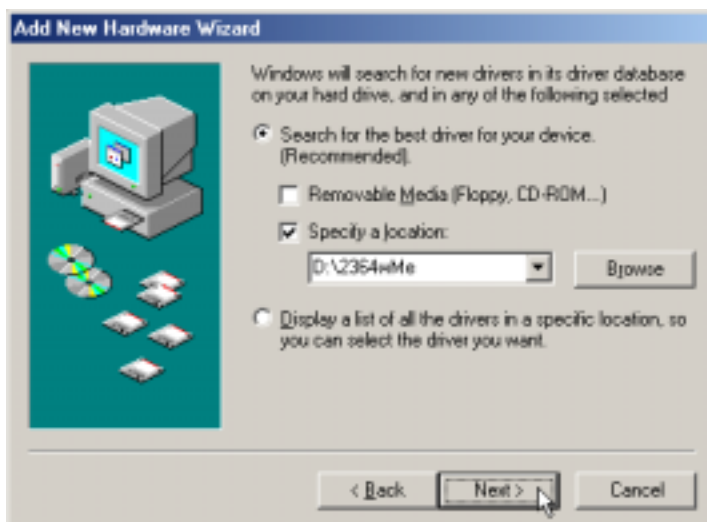
2. Still in the **Add New Hardware** window, select "Search for the best driver for the device" option", then choose "Specify a location:" and click **Browse**.



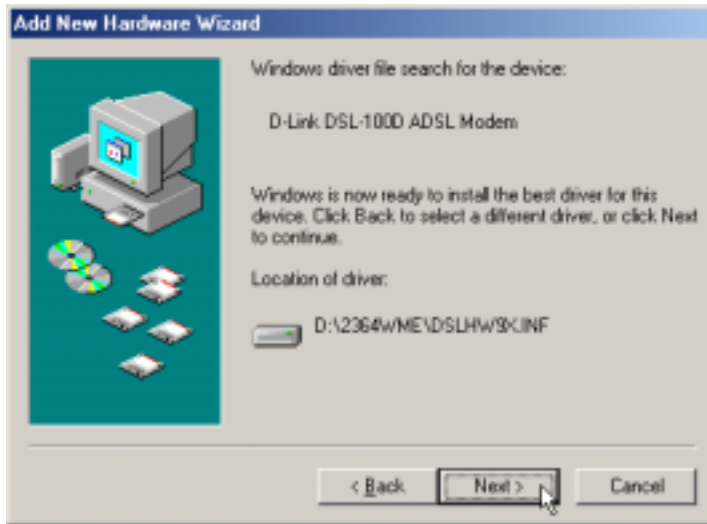
3. Find the folder 1483wMe, 1577wMe, or 2364wMe (according to the protocol used by your ISP) and highlight it. Click **OK**.



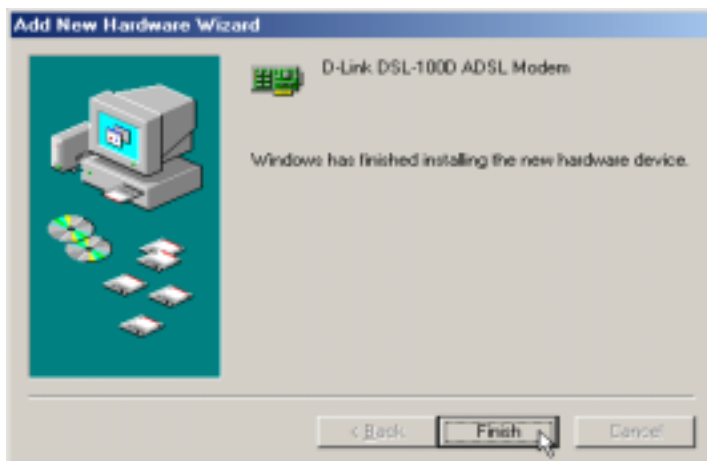
4. The location of the driver is now listed. Click **Next**.



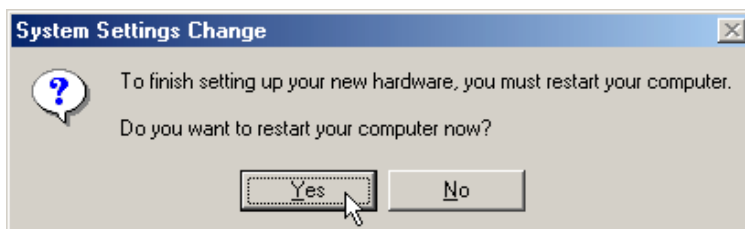
5. The **Add New Hardware Wizard** window appears indicating the location of the driver. Click **Next** to install the driver.



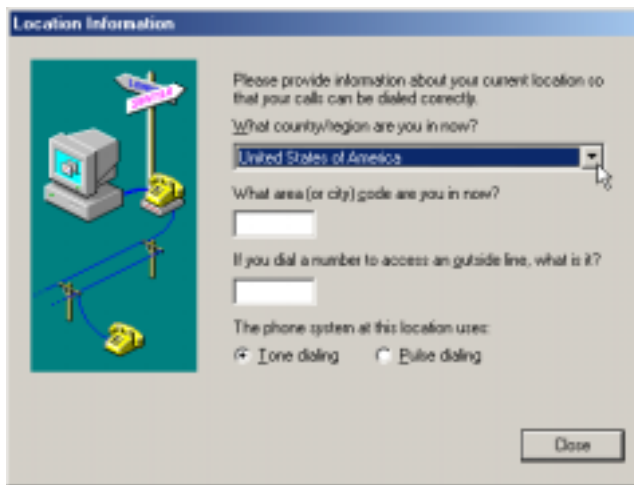
6. After the driver has finished installing, click **Finish**.



7. You must restart the computer to finish the installation. You can do that now if you wish.



8. If you install the RFC2364 (PPPoA) driver, after you restart the **Location Information** window appears automatically. Choose the country and enter the area code where you are located. Click Close when you are finished. You next need to configure the device. Proceed to the section on Configuration.

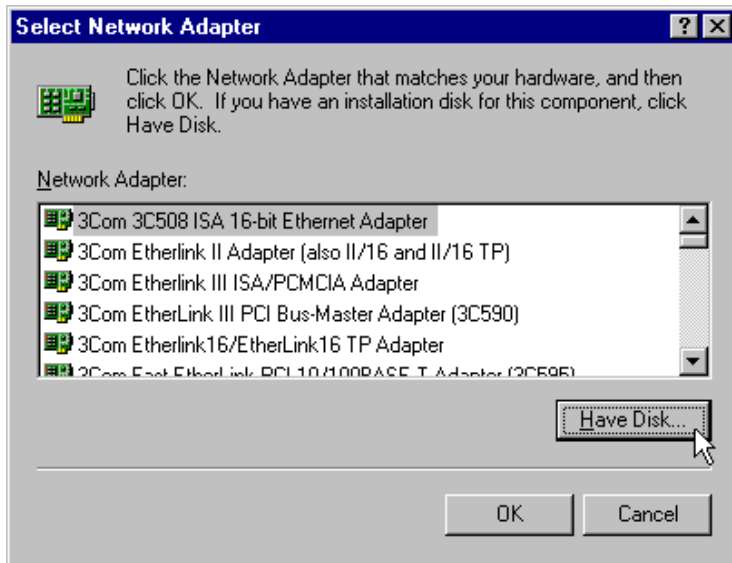


Windows NT 4.0 Driver Installation

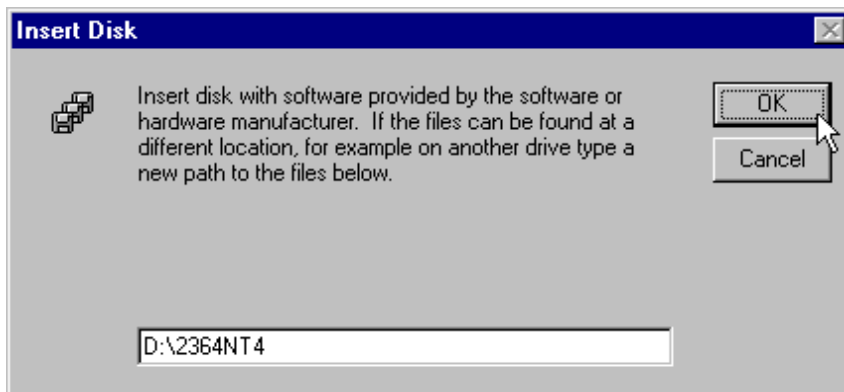
1. From the **Start** menu, go to **Settings** and open the **Control Panel** folder.
2. Double-click the **Network** icon.
3. Select the **Adapters** tab. Click **Add** to add the new hardware.



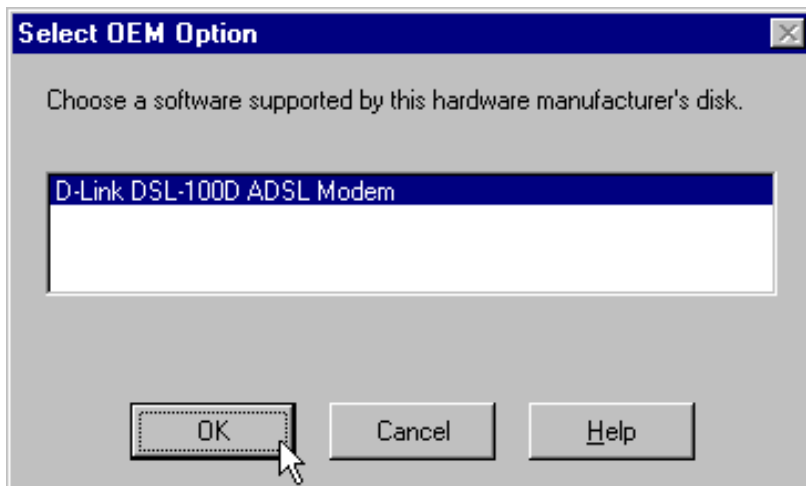
4. Click the **Have Disk** button to search for the driver.



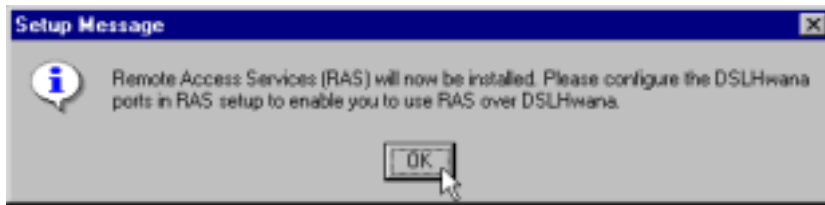
5. Insert the driver CD and click **OK**. Assuming your CD-ROM drive is labeled the “D” drive you would type **D:\1483NT4**, **D:\1577NT4** or **D:\2364NT4** (according to the protocol used by your ISP) and click **OK**.



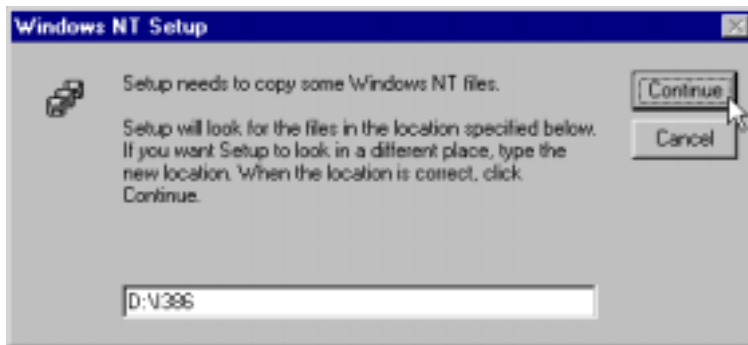
6. The **Select OEM Option** window appears. The DSL-100D ADSL Modem will be listed if you typed in the correct path in the previous window, click **OK**.



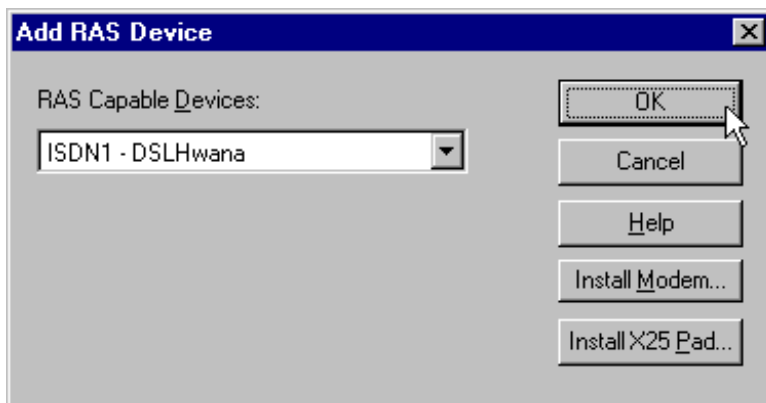
7. The **Setup Message** window tells you that Remote Access Services will be installed. Click **OK**.



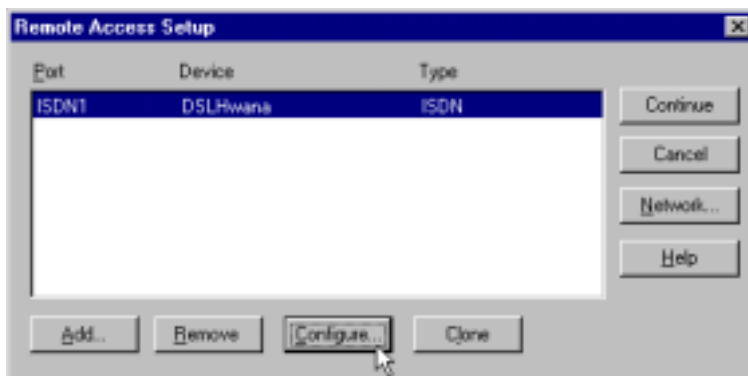
8. Replace the driver CD with the NT 4.0 CD. Type in the directory name and click **Continue**. For example, if your CD-ROM drive is labeled as the D drive, type **D:\I386**.



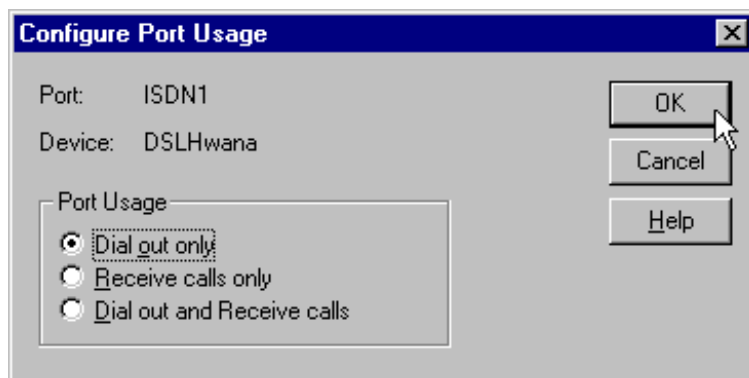
9. If you install the RFC2364 (PPPoA) driver, the **Add RAS Device** window will appear. The RAS Capable Device listed will be "ISDN1 - DSLHwana". Click **OK**.



10. The **Remote Access Setup** window confirms your selection. Click **Configure**.



11. In the **Configure Port Usage** window, select 'Dial out only' and click **OK**.



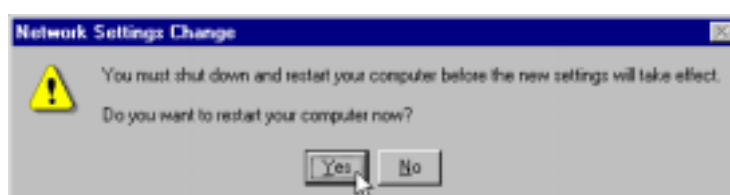
12. You are again asked to confirm the selection. Click **Continue**.



13. Finally the **Network** window again appears. You will see the PCI Modem has been added to the list of network adapters. Click **Close**.



14. You need to restart the computer to save the settings changes, click **Yes**.



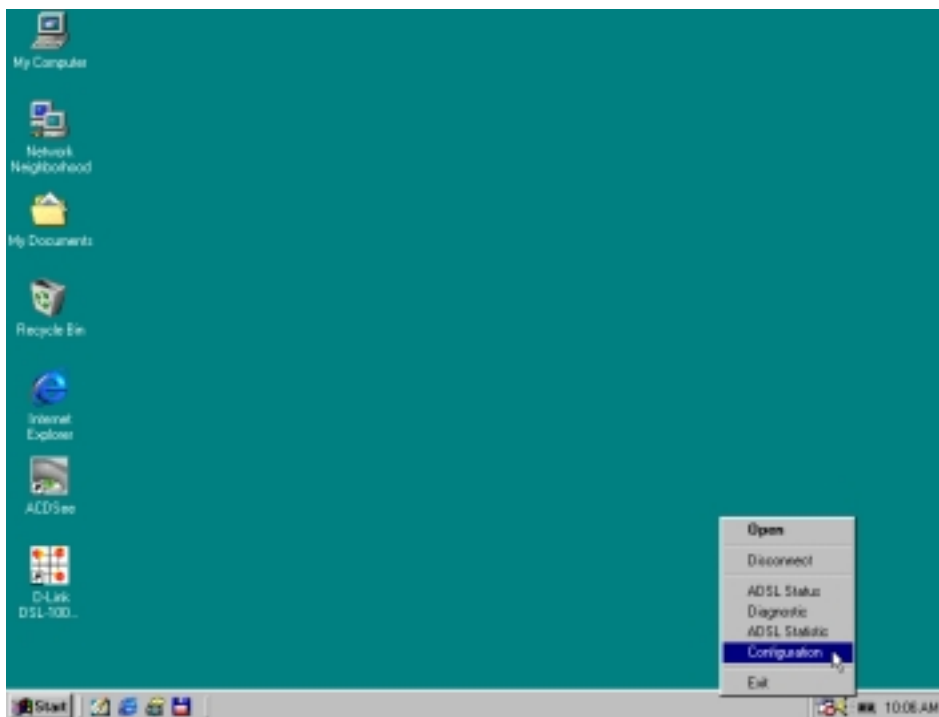
Configure Modem

The third step of the installation procedure is to configure the Modem. The configuration process is identical for all Windows operating systems except Windows 2000. This section describes both configuration processes.

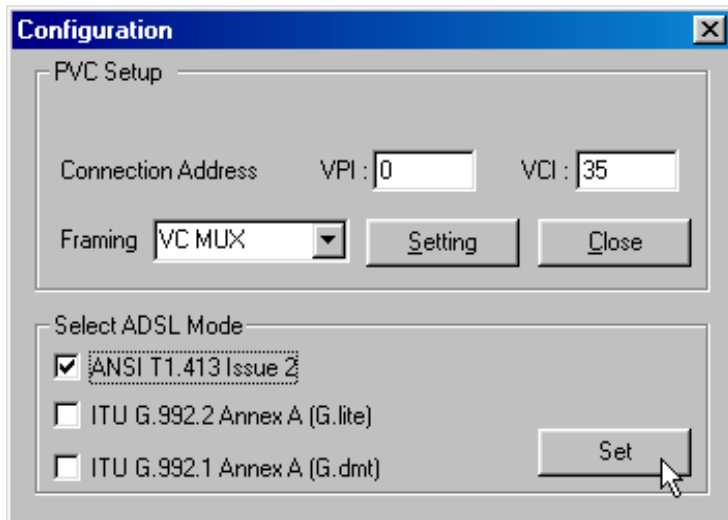
Configure Modem for Windows 95/98/98SE, Windows ME and Windows NT 4.0

Follow these steps to configure the Modem on a PC running Windows 95/98/98SE, Windows ME or Windows NT 4.0:

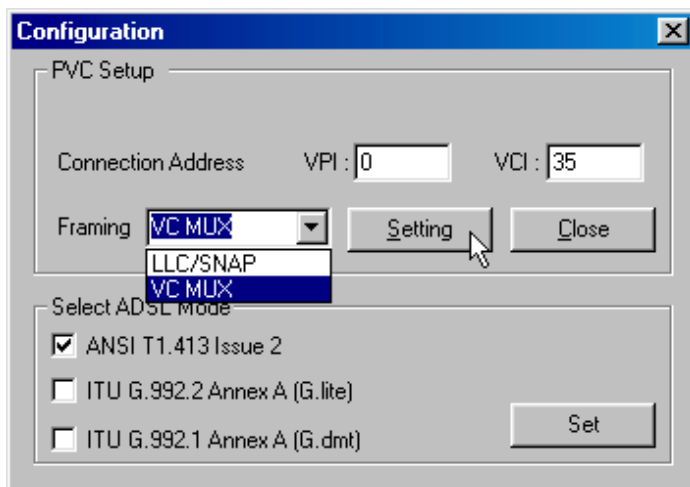
1. After you have installed the driver, a new icon will appear in the system tray of your PC display on the right side. This icon mirrors the LED indicators located on the PCI modem. Right-click on the icon and a pop-up menu will appear. Select the **Configuration** option.



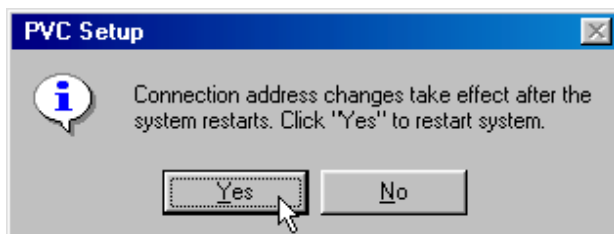
2. In the Configuration menu, you will need to choose the ADSL connection mode as instructed by your ADSL service provider. Select **ANSI T1.413 Issue 2**, **ITU G992.2 Annex A (G.lite)**, or **ITU G992.2 Annex A** in the Select ADSL Mode field by checking the box to the left of the mode. If you are unsure which mode to select you can select all three, the correct one will be detected automatically. Click **Set** when finished.



3. In the same window, you must define the data framing method used in the Framing pull-down menu. If your ADSL service provider doesn't instruct you which framing method to use, choose VC MUX for RFC 2364 (PPPoA), LLC/SNAP for RFC 1483 (MPoA) and RFC 1577 (IPoA). You must also enter the VPI and VCI values assigned to you. Click **Setting** when finished.



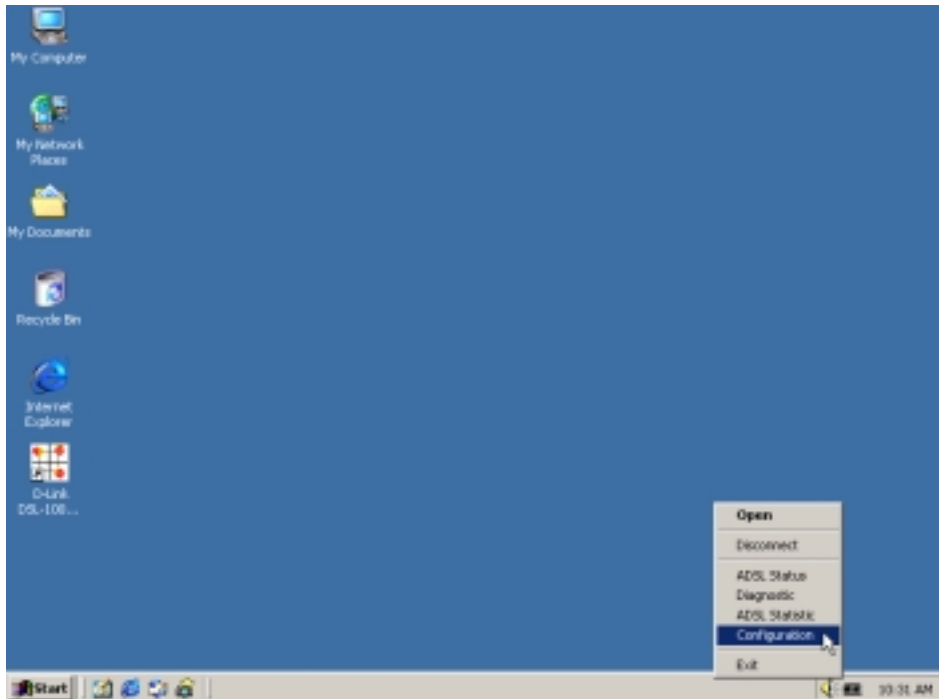
1. You must restart for the settings to take effect. Click **Yes**.



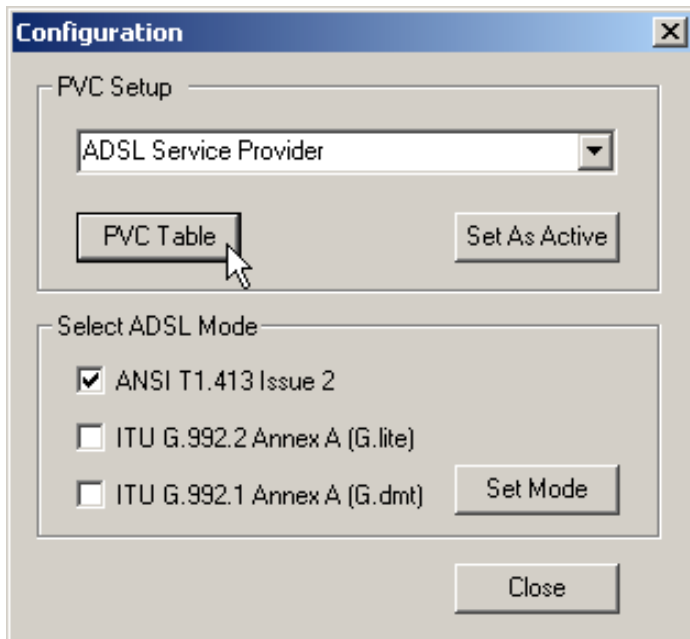
Configure Modem for Windows 2000

To configure the Modem for the Windows 2000 environment, follow these steps:

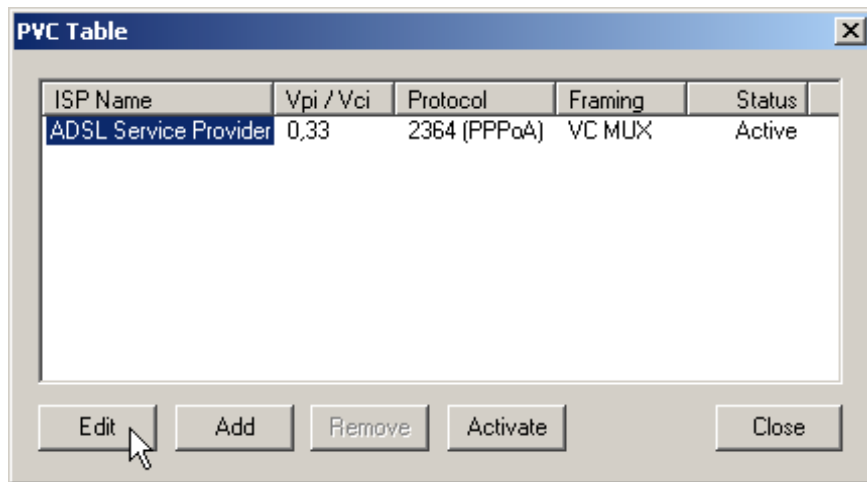
1. After you have installed the driver, a new icon will appear in the system tray of your PC display on the right side. This icon mirrors the LED indicators located on the PCI modem. Right-click on the icon and a pop-up menu will appear. Select the **Configuration** option.



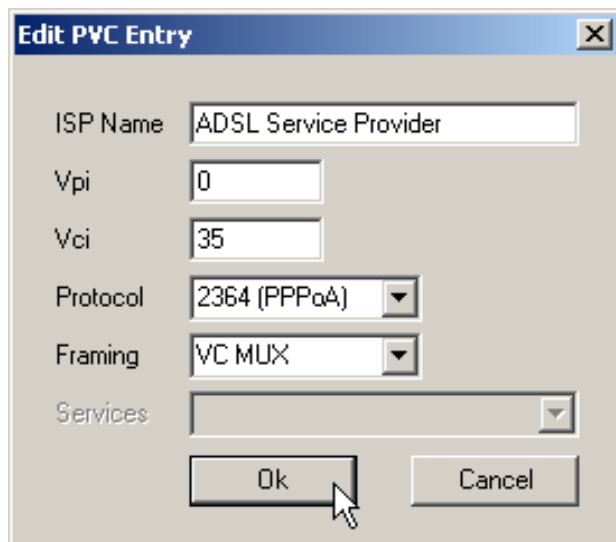
2. In the Configuration window you will see the name of your ADSL service provider listed in the PVC Setup field. Click the **PVC Table** button to view and edit the PVC settings.



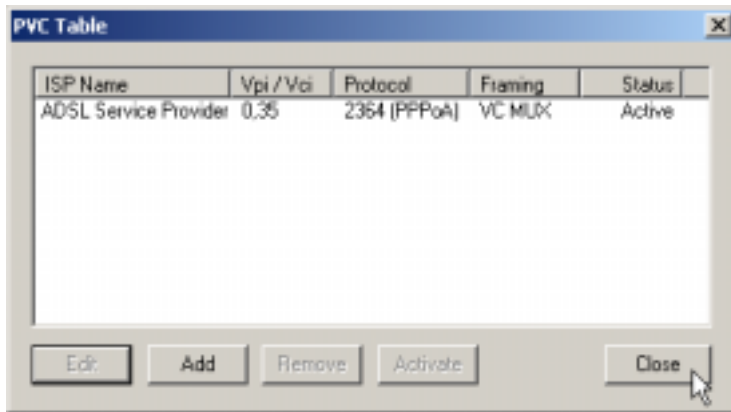
3. In the PVC Table window you will see your ADSL service provider listed as well as the default VPI/VCI settings, the ADSL protocol (RFC 2364 PPP over ATM), the framing method used (Virtual Circuit Multiplexing) and the status of the ADSL link (Active). Highlight the 'ADSL Service Provider' and click **Edit** or double-click the 'ADSL Service Provider' to change the settings.



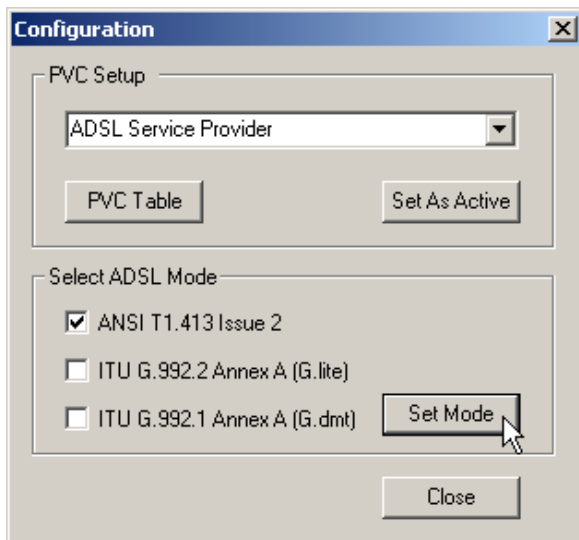
4. In the Edit PVC Entry window you can change the VPI, VCI values as well as the ADSL protocol used and the framing method. Choose the protocol and framing method according to the instructions provided by your ADSL service provider. If your ADSL service provider doesn't instruct you which framing method to use, choose VC MUX for RFC2364 (PPPoA), LLC/SNAP for RFC 1483 (MPoA) and RFC 1577 (IPoA). In addition to this information, your service provider should have assigned a VPI and VCI value to use for your connection. Enter those values here as well. Click **OK** when you are satisfied with the PVC settings you have specified.



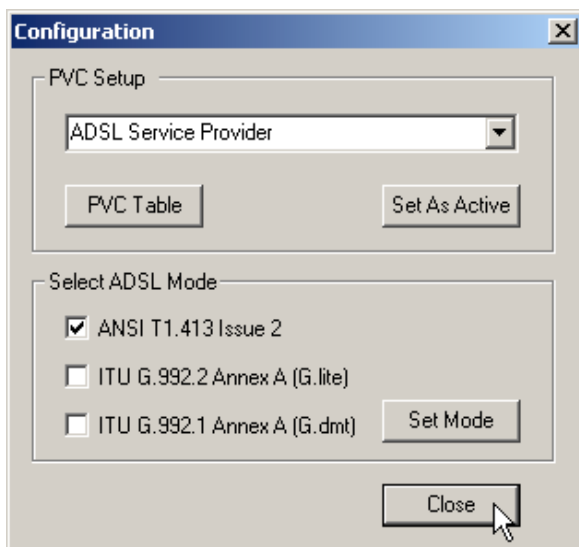
5. The PVC Table will again appear with a summary of the PVC settings. Check them again to be certain they are correct and click **Close** to exit this menu.



6. The Configuration window will appear one more time. Select the ADSL Mode according to the instruction of your ADSL service provider. If you are unsure which mode to select you can select all three, the correct one will be detected automatically. Click **Set Mode** to finalize this setting.



7. You may now close the Configuration window. Click **Close** to end the configuration process.



Step 3

Connect to Internet

How you connect to the Internet using ADSL is effected by which protocol is used to establish that connection. The instructions here are given according to the connection method used. For ADSL connections using RFC 2364 (Point-to-Point Protocol over ATM), follow the instructions below.

The procedure for establishing Internet connection using RFC 1483 (Multi-protocol Encapsulation over ATM) and RFC 1577 (Classical IP over ATM) requires you to enter information given to you by your ISP or ADSL service provider. The procedures for the different Windows OS environments differ slightly and are presented in separate sections. Follow the instruction appropriate for your operating system.

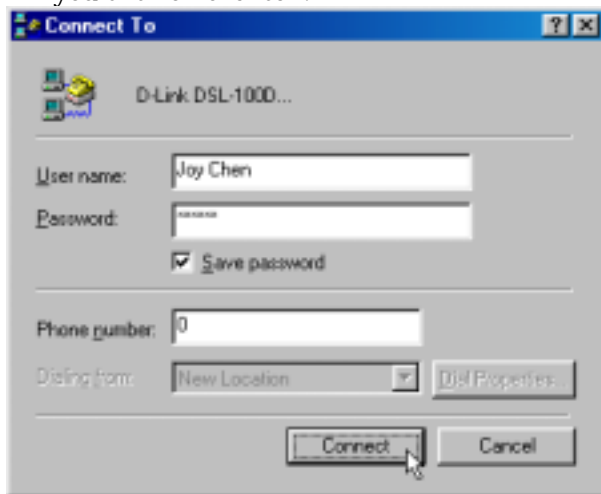
RFC 2364 PPPoA Users

If you have configured the modem for the RFC 2364 PPPoA, the final step in the setup process is to establish the actual connection. The Modem uses the same system software as an analog modem to make the connection. However there is no actual dial-up. The ADSL connection is completely separate from regular voice telephone service.

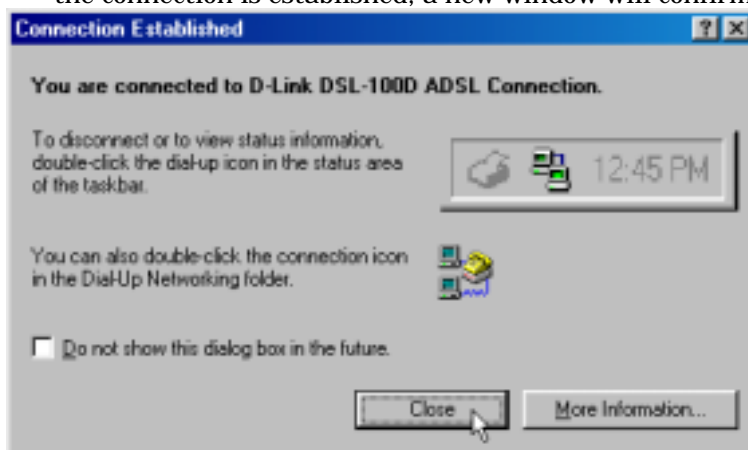
1. To complete the ADSL connection (using RFC 2364), double-click the **DSL-100D ADSL Connection** icon that now appears on your desktop.



2. You now need only to provide a **User Name** and **Password**, no other information is required. The sample window pictured below appears on a PC running Windows 95 or 98/98SE after you click on the icon.



3. Enter the User Name and Password here and click on **Connect**. You do not need to enter a phone number or in the case of Windows NT 4.0, you do not need to enter the domain information. Windows 2000 users will click on **Dial** to connect. Windows NT 4.0 users click on **OK** to connect.
4. A few seconds may be required for the negotiation phase of the connection procedure. Once the connection is established, a new window will confirm the connection.



5. Click on **Close** and you are done.

For RFC 1483 and RFC 1577 Users

If your ADSL connection uses either the RFC 1483 or the RFC 1577 protocol, you must set your own TCP/IP configuration. The following information should be provided by your ISP or ADSL service provider:

- ◆ IP Address,
- ◆ Subnet Mask,
- ◆ Gateway
- ◆ DNS Host Name
- ◆ DNS Domain
- ◆ DNS Server

Windows 95 and Windows 98 (RFC 1483/RFC 1577)

Follow these steps if you are using the RFC 1483 or RFC 1577 protocol on a computer running Windows 95 or Windows 98.

1. From the **Start** menu, select **Settings, Control Panel**, and then double-click on the **Network** icon.
2. The **Network** window will appear. Select the **Configuration** tab, scroll down the installed network components list and click on **TCP/IP→ D-Link DSL-100D ADSL Modem**
3. Click the **Properties** button.
4. The **TCP/IP Properties** window will appear. Select the **IP Address** tab and then select the **Select an IP address** option. Enter the **IP Address** and **Subnet Mask** settings given to you by your ISP or ADSL service provider.
5. Select the **Gateway** tab and enter the IP settings in the **New gateway** field. Click **Add**.
6. Select the **DNS Configuration** tab. Select the **Enable DNS** option.
7. Type in your host name in the **Host:** field.
8. Type in your domain name in the **Domain:** field.
9. Enter the **DNS** settings in the **DNS Server Search Order** field and click **Add**. If you have more than one DNS IP address, repeat this step. You can have up to 3 DNS servers listed here.
10. After all the TCP/IP information has been entered, click **OK**.
11. The **Network** window again appears, click **OK**.
12. The **System Settings Change** window appears. You need to restart your computer for the changes to go into effect. Click **Yes**.

Windows 2000 (RFC 1483/RFC 1577)

1. Double-click on the **My Computer** icon, then the **Control Panel** icon, and then the **Network and Dial-up Connections** icon.
2. The **Network and Dial-up Connections** window will appear. Right click on the **Local Area Connection** for the **D-Link DSL-100D ADSL PCI Modem**.
3. The **Local Area Connection** window will appear. Click on **Internet Protocol (TCP/IP)**, then click on **Properties**.
4. The **Internet Protocol (TCP/IP)** window will appear. Under the **General** tab, select **Use the following IP address**. Enter the **IP address**, **Subnet Mask**, and **Default Gateway** given to you by your ISP or ADSL service provider. Click **OK**.
5. The **General** tab will again appear. Click **OK**.
6. The **Network and Dial-up Connection** window will appear. Close this window to complete the connection.

Contacting Technical Support

D-Link provides free technical support for customers within the United States.

U.S. customers can contact D-Link technical support through our web site, e-mail, or by phone.

United States technical support is available Monday through Friday from 6:00 a.m. to 6:00 p.m. (PST).

Web:

<http://www.dlink.com>

Email:

support@dlink.com

Phone:

949-788-0805 (option #4)

If you are a customer residing outside of the United States, please refer to the list of D-Link locations that is included in this manual.

Thank you for purchasing this product. We like to receive feedback from our customers concerning our products. Please take a moment to visit our web site. You can register your purchase on-line, learn more about the newest networking products, and let us know the things your new network has empowered you to do.

D-Link[®] Offices

- AUSTRALIA D-LINK AUSTRALASIA**
Unit 16, 390 Eastern Valley Way, Roseville, NSW 2069, Australia
TEL: 61-2-9417-7100 FAX: 61-2-9417-1077
TOLL FREE: 1800-177-100 (Australia), 0800-900900 (New Zealand)
URL: www.dlink.com.au
E-MAIL: support@dlink.com.au, info@dlink.com.au
- CANADA D-LINK CANADA**
2180 Winston Park Drive, Oakville, Ontario L6H 5W1 Canada
TEL: 1-905-829-5033 FAX: 1-905-829-5223 BBS: 1-965-279-8732
FREE CALL: 1-800-354-6522
URL: www.dlink.ca
FTP: [ftp.dlinknet.com](ftp://ftp.dlinknet.com)
E-MAIL: techsup@dlink.ca
- CHILE D-LINK SOUTH AMERICA**
Isidora Goyenechea #2934 of.702, Las Condes, Santiago, Chile
TEL: 56-2-232-3185 FAX: 56-2-2320923
URL: www.dlink.cl
E-MAIL: ccasassu@dlink.cl, tsilva@dlink.cl
- DENMARK D-LINK DENMARK**
Naverland 2, DK-2600 Glostrup, Copenhagen, Denmark
TEL:45-43-969040 FAX:45-43-424347
URL: www.dlink.dk
E-MAIL: info@dlink.dk
- EGYPT D-LINK MIDDLE EAST**
7 Assem Ebn Sabet Street, Heliopolis Cairo, Egypt
TEL: 202-2456176 FAX: 202-2456192
URL: www.dlink-me.com
E-MAIL: support@dlink-me.com, fateen@dlink-me.com
- FRANCE D-LINK FRANCE**
Le Florilege #2, Allee de la Fresnerie
78330 Fontenay Le Fleury France
TEL: 33-1-30238688 FAX: 33-1-3023-8689
URL: www.dlink-france.fr
E-MAIL: info@dlink-france.fr
- GERMANY D-LINK CENTRAL EUROPE/D-LINK DEUSTSCHLAND GMBH**
Schwalbacher Strasse 74, 65760 Eschborn Germany
TEL: 49-(0) 6196-7799-0 FAX: 49-(0) 6196-7799-300
URL: www.dlink.de
E-MAIL: mbischoff@dlink.de, mboerner@dlink.de
- INDIA D-LINK INDIA**
Plot No.5, Kurla-Bandra Complex Road,
Off Cst Road, Santacruz (E), Bombay - 400 098 India
TEL: 91-22-652-6696 FAX: 91-22-652-8914
URL: www.dlink-india.com
E-MAIL: service@dlink.india.com
- ITALY D-LINK ITALY**
Via Nino Bonnet No. 6/b, 20154 Milano, Italy
TEL: 39-02-2900-0676
FAX: 39-02-2900-1723
E-MAIL: info@dlink.it
URL: www.dlink.it

- JAPAN** **D-LINK JAPAN**
10F, 8-8-15 Nishi-Gotanda, Shinagawa-ku, Tokyo 141 Japan
TEL: 81-3-5434-9678
FAX: 81-3-5434-9868
URL: www.d-link.co.jp
E-MAIL: kida@d-link.co.jp
- RUSSIA** **D-LINK RUSSIA**
Michurinski Prospekt 49, 117607 Moscow, Russia
TEL: 7-095-737-3389, 7-095-737-3492 FAX: 7-095-737-3390
E-MAIL: vl@dlink.ru
- SINGAPORE** **D-LINK INTERNATIONAL**
1 International Business Park, #03-12 The Synergy, Singapore 609917
TEL: 65-774-6233 FAX: 65-774-6322
URL: www.dlink-intl.com
E-MAIL: info@dlink.com.sg
- S. AFRICA** **D-LINK SOUTH AFRICA**
Unit 2, Parkside 86 Oak Avenue
Highveld Technopark Centurion, Gauteng, Republic of South Africa
TEL: 27(0)126652165 FAX: 27(0)126652186
CELL NO: 0826010806 (Bertus Moller)
CELL NO: 0826060013 (Attie Pienaar)
E-MAIL: bertus@d-link.co.za, attie@d-link.co.za
- SWEDEN** **D-LINK SWEDEN**
P.O. Box 15036, S-167 15 Bromma Sweden
TEL: 46-(0)8564-61900
FAX: 46-(0)8564-61901
E-MAIL: info@dlink.se
URL: www.dlink.se
- TAIWAN** **D-LINK TAIWAN**
2F, No. 119 Pao-Chung Road, Hsin-Tien, Taipei, Taiwan
TEL: 886-2-2910-2626
FAX: 886-2-2910-1515
URL: www.dlinktw.com.tw
E-MAIL: dssqa@tsc.dlinktw.com.tw
- U.K.** **D-LINK EUROPE**
D-Link (Europe) Ltd. 4th Floor Merit House,
Edgware Road, Colindale, London NW95AB U.K.
TEL: 44-20-8731-5555 FAX: 44-20-8731-5511
URL: www.dlink.co.uk
E-MAIL: info@dlink.co.uk
- U.S.A** **D-LINK U.S.A.**
53 Discovery Drive, Irvine, CA 92618 USA
TEL: 1-949-788-0805 FAX: 1-949-753-7033
INFO LINE: 1-800-326-1688
BBS: 1-949-455-1779, 1-949-455-9616
URL: www.dlink.com
E-MAIL: tech@dlink.com, support@dlink.com

Modem Indicators

Diagnostic Icon Function

Once you have installed the software driver a new **Diagnostic Tool** icon will appear in the lower right corner of your desktop in the system tray. This icon serves to help you monitor some of the characteristics of the ADSL connection. It can also be used to access the Configuration menu (see the next section). The table below summarizes the icon display function.

| COLOR | STATUS DESCRIPTION |
|---------------------------|---|
| RED RED | No connection. Check your cable |
| BLACK YELLOW | Handshake process in progress |
| BLACK BLACK | Connection established, line is idle |
| BLACK GREEN | Connection established, data being received |
| GREEN BLACK | Connection established, data being transmitted |
| GREEN GREEN | Data being transmitted and received |
| Icon with Ø symbol | PCI Modem is disconnected or there is a problem with the driver |

LED Indicators

There are two LED indicators on the PCI Modem. The **Link** indicator will light green when an ADSL link has been established. The **Act** indicator will blink green when there is activity on the ADSL line.

Uninstall the Modem

To uninstall this PCI ADSL Modem, follow these steps

1. Click on “Start”,
2. Go to “Program”,
3. Select “D-Link DSL-100D”
4. Click “Un-Installer” and follow the instructions when prompted

Appendix A

TECHNICAL SPECIFICATIONS

Interfaces: Edge connector for PCI bus; two RJ-11 jacks (ADSL connection and telephone connection).

Standards Compliance:

- ANSI T1.413 issue 2 (full-rate DMT over analog POTS)
- ITU G.992.1 (G.dmt)
- ITU G.992.2 (G.lite)

Data Rate:

DMT full rate: Downstream data rate to 8 Mbps, upstream data rate to 800 Kbps.

G.lite ADSL: Downstream data rate to 1.5 Mbps, upstream data rate to 800 Kbps.

Dimensions (H x W x D): 168.5 x 95 x 18 mm.

Operating temperature: 0° to 55° C.

Operating humidity: 5% to 95% (non-condensing).

EMI: CE class B, FCC class B

Safety: UL, CSA

Trademarks

Copyright ©2000 D-Link Corporation.

Contents subject to change without prior notice.

D-Link is a registered trademark of D-Link Corporation/D-Link Systems, Inc.

All other trademarks belong to their respective proprietors.

Copyright Statement

No part of this publication may be reproduced in any form or by any means or used to make any derivative such as translation, transformation, or adaptation without permission from D-Link Corporation/D-Link Systems Inc., as stipulated by the United States Copyright Act of 1976

FCC Warning

This device complies with part 15 of the FCC Rules. Operation is subject to the following two conditions: (1) This device may not cause harmful interference, and (2) this device must accept any interference received, including interference that may cause undesired operation.

This equipment has been tested and found to comply with the limits for a Class B digital device, pursuant to part 15 of the FCC Rules. These limits are designed to provide reasonable protection against harmful interference in a residential installation. This equipment generates, uses and can radiate radio frequency energy and, if not installed and used in accordance with the instructions, may cause harmful interference to radio communications. However, there is no guarantee that interference will not occur in a particular installation. If this equipment does cause harmful interference to radio or television reception, which can be determined by turning equipment off and on, the user is encouraged to try to correct the interference by one or more of the following measures:

- Reorient or relocate the receiving antenna.
- Increase the separation between the equipment and receiver.
- Connect the equipment into an outlet on a circuit different from that to which the receiver is connected.
- Consult the dealer or an experienced radio/TV technician for help.

CE Mark Warning

This is a Class B product. In a domestic environment, this product may cause radio interference in which case the user may be required to take adequate measures.

VCCI Class B Warning

この装置は、情報処理装置等電波障害自主規制協議会(VCCI)の基準に基づくクラスB 情報技術装置です。この装置は、家庭環境で使用することを目的としていますが、この装置がラジオやテレビジョン受信機に近接して使用されると、受信障害を引き起こすことがあります。

取扱説明書に従って正しい取り扱いをして下さい。

BSMI Warning

警告 使用者

這是甲類的資訊產品,在居住的環境中使用時,可能會造成射頻干擾,在這種情況下使用者會被要求採取某些適當的對策.

Limited Warranty

Hardware:

D-LINK WARRANTS EACH OF ITS HARDWARE PRODUCTS TO BE FREE FROM DEFECTS IN WORKMANSHIP AND MATERIALS UNDER NORMAL USE AND SERVICE FOR A PERIOD COMMENCING ON THE DATE OF PURCHASE FROM D-LINK OR ITS AUTHORIZED RESELLER AND EXTENDING FOR THE LENGTH OF TIME STIPULATED BY THE AUTHORIZED RESELLER OR D-LINK BRANCH OFFICE NEAREST TO THE PLACE OF PURCHASE.

THIS WARRANTY APPLIES ON THE CONDITION THAT THE PRODUCT REGISTRATION CARD IS FILLED OUT AND RETURNED TO A D-LINK OFFICE WITHIN NINETY (90) DAYS OF PURCHASE. A LIST OF D-LINK OFFICES IS PROVIDED AT THE BACK OF THIS MANUAL, TOGETHER WITH A COPY OF THE REGISTRATION CARD.

IF THE PRODUCT PROVES DEFECTIVE WITHIN THE APPLICABLE WARRANTY PERIOD, D-LINK WILL PROVIDE REPAIR OR REPLACEMENT OF THE PRODUCT. D-LINK SHALL HAVE THE SOLE DISCRETION WHETHER TO REPAIR OR REPLACE, AND REPLACEMENT PRODUCT MAY BE NEW OR RECONDITIONED. REPLACEMENT PRODUCT SHALL BE OF EQUIVALENT OR BETTER SPECIFICATIONS, RELATIVE TO THE DEFECTIVE PRODUCT, BUT NEED NOT BE IDENTICAL. ANY PRODUCT OR PART REPAIRED BY D-LINK PURSUANT TO THIS WARRANTY SHALL HAVE A WARRANTY PERIOD OF NOT LESS THAN 90 DAYS, FROM DATE OF SUCH REPAIR, IRRESPECTIVE OF ANY EARLIER EXPIRATION OF ORIGINAL WARRANTY PERIOD. WHEN D-LINK PROVIDES REPLACEMENT, THEN THE DEFECTIVE PRODUCT BECOMES THE PROPERTY OF D-LINK.

WARRANTY SERVICE MAY BE OBTAINED BY CONTACTING A D-LINK OFFICE WITHIN THE APPLICABLE WARRANTY PERIOD, AND REQUESTING A RETURN MATERIAL AUTHORIZATION (RMA) NUMBER. IF A REGISTRATION CARD FOR THE PRODUCT IN QUESTION HAS NOT BEEN RETURNED TO D-LINK, THEN A PROOF OF PURCHASE (SUCH AS A COPY OF THE DATED PURCHASE INVOICE) MUST BE PROVIDED. IF PURCHASER'S CIRCUMSTANCES REQUIRE SPECIAL HANDLING OF WARRANTY CORRECTION, THEN AT THE TIME OF REQUESTING RMA NUMBER, PURCHASER MAY ALSO PROPOSE SPECIAL PROCEDURE AS MAY BE SUITABLE TO THE CASE.

AFTER AN RMA NUMBER IS ISSUED, THE DEFECTIVE PRODUCT MUST BE PACKAGED SECURELY IN THE ORIGINAL OR OTHER SUITABLE SHIPPING PACKAGE TO ENSURE THAT IT WILL NOT BE DAMAGED IN TRANSIT, AND THE RMA NUMBER MUST BE PROMINENTLY MARKED ON THE OUTSIDE OF THE PACKAGE. THE PACKAGE MUST BE MAILED OR OTHERWISE SHIPPED TO D-LINK WITH ALL COSTS OF MAILING/SHIPPING/INSURANCE PREPAID. D-LINK SHALL NEVER BE RESPONSIBLE FOR ANY SOFTWARE, FIRMWARE, INFORMATION, OR MEMORY DATA OF PURCHASER CONTAINED IN, STORED ON, OR INTEGRATED WITH ANY PRODUCT RETURNED TO D-LINK PURSUANT TO THIS WARRANTY.

ANY PACKAGE RETURNED TO D-LINK WITHOUT AN RMA NUMBER WILL BE REJECTED AND SHIPPED BACK TO PURCHASER AT PURCHASER'S EXPENSE, AND D-LINK RESERVES THE RIGHT IN SUCH A CASE TO LEVY A REASONABLE HANDLING CHARGE IN ADDITION MAILING OR SHIPPING COSTS.

Software:

WARRANTY SERVICE FOR SOFTWARE PRODUCTS MAY BE OBTAINED BY CONTACTING A D-LINK OFFICE WITHIN THE APPLICABLE WARRANTY PERIOD. A LIST OF D-LINK OFFICES IS PROVIDED AT THE BACK OF THIS MANUAL,

TOGETHER WITH A COPY OF THE REGISTRATION CARD. IF A REGISTRATION CARD FOR THE PRODUCT IN QUESTION HAS NOT BEEN RETURNED TO A D-LINK OFFICE, THEN A PROOF OF PURCHASE (SUCH AS A COPY OF THE DATED PURCHASE INVOICE) MUST BE PROVIDED WHEN REQUESTING WARRANTY SERVICE. THE TERM "PURCHASE" IN THIS SOFTWARE WARRANTY REFERS TO THE PURCHASE TRANSACTION AND RESULTING LICENSE TO USE SUCH SOFTWARE.

D-LINK WARRANTS THAT ITS SOFTWARE PRODUCTS WILL PERFORM IN SUBSTANTIAL CONFORMANCE WITH THE APPLICABLE PRODUCT DOCUMENTATION PROVIDED BY D-LINK WITH SUCH SOFTWARE PRODUCT, FOR A PERIOD OF NINETY (90) DAYS FROM THE DATE OF PURCHASE FROM D-LINK OR ITS AUTHORIZED RESELLER. D-LINK WARRANTS THE MAGNETIC MEDIA, ON WHICH D-LINK PROVIDES ITS SOFTWARE PRODUCT, AGAINST FAILURE DURING THE SAME WARRANTY PERIOD. THIS WARRANTY APPLIES TO PURCHASED SOFTWARE, AND TO REPLACEMENT SOFTWARE PROVIDED BY D-LINK PURSUANT TO THIS WARRANTY, BUT SHALL NOT APPLY TO ANY UPDATE OR REPLACEMENT WHICH MAY BE PROVIDED FOR DOWNLOAD VIA THE INTERNET, OR TO ANY UPDATE WHICH MAY OTHERWISE BE PROVIDED FREE OF CHARGE.

D-LINK'S SOLE OBLIGATION UNDER THIS SOFTWARE WARRANTY SHALL BE TO REPLACE ANY DEFECTIVE SOFTWARE PRODUCT WITH PRODUCT WHICH SUBSTANTIALLY CONFORMS TO D-LINK'S APPLICABLE PRODUCT DOCUMENTATION. PURCHASER ASSUMES RESPONSIBILITY FOR THE SELECTION OF APPROPRIATE APPLICATION AND SYSTEM/PLATFORM SOFTWARE AND ASSOCIATED REFERENCE MATERIALS. D-LINK MAKES NO WARRANTY THAT ITS SOFTWARE PRODUCTS WILL WORK IN COMBINATION WITH ANY HARDWARE, OR ANY APPLICATION OR SYSTEM/PLATFORM SOFTWARE PRODUCT PROVIDED BY ANY THIRD PARTY, EXCEPTING ONLY SUCH PRODUCTS AS ARE EXPRESSLY REPRESENTED, IN D-LINK'S APPLICABLE PRODUCT DOCUMENTATION AS BEING COMPATIBLE. D-LINK'S OBLIGATION UNDER THIS WARRANTY SHALL BE A REASONABLE EFFORT TO PROVIDE COMPATIBILITY, BUT D-LINK SHALL HAVE NO OBLIGATION TO PROVIDE COMPATIBILITY WHEN THERE IS FAULT IN THE THIRD-PARTY HARDWARE OR SOFTWARE. D-LINK MAKES NO WARRANTY THAT OPERATION OF ITS SOFTWARE PRODUCTS WILL BE UNINTERRUPTED OR ABSOLUTELY ERROR-FREE, AND NO WARRANTY THAT ALL DEFECTS IN THE SOFTWARE PRODUCT, WITHIN OR WITHOUT THE SCOPE OF D-LINK'S APPLICABLE PRODUCT DOCUMENTATION, WILL BE CORRECTED.

Warranty Period

FOR WARRANTY IN YOUR REGION, PLEASE CHECK WITH YOUR LOCAL D-LINK OFFICE AND AUTHORIZED AGENTS AS WARRANTY PERIODS MAY VARY FROM REGION TO REGION.

THE WARRANTY FOR POWER SUPPLIES AND POWER ADAPTERS IS ONE YEAR.

D-Link Offices for Registration and Warranty Service

THE PRODUCT'S REGISTRATION CARD, PROVIDED AT THE BACK OF THIS MANUAL, MUST BE SENT TO A D-LINK OFFICE. TO OBTAIN AN RMA NUMBER FOR WARRANTY SERVICE AS TO A HARDWARE PRODUCT, OR TO OBTAIN WARRANTY SERVICE AS TO A SOFTWARE PRODUCT, CONTACT THE D-LINK OFFICE NEAREST YOU. AN ADDRESS/TELEPHONE/FAX/E-MAIL/WEB SITE LIST OF D-LINK OFFICES IS PROVIDED IN THE BACK OF THIS MANUAL.

LIMITATION OF WARRANTIES

IF THE D-LINK PRODUCT DOES NOT OPERATE AS WARRANTED ABOVE, THE CUSTOMER'S SOLE REMEDY SHALL BE, AT D-LINK'S OPTION, REPAIR OR REPLACEMENT. THE FOREGOING WARRANTIES AND REMEDIES ARE EXCLUSIVE AND ARE IN LIEU OF ALL OTHER WARRANTIES, EXPRESSED OR IMPLIED, EITHER IN FACT OR BY OPERATION OF LAW, STATUTORY OR OTHERWISE, INCLUDING WARRANTIES OF MERCHANTABILITY AND FITNESS FOR A PARTICULAR PURPOSE. D-LINK NEITHER ASSUMES NOR AUTHORIZES ANY OTHER PERSON TO ASSUME FOR IT ANY OTHER LIABILITY IN CONNECTION WITH THE SALE, INSTALLATION MAINTENANCE OR USE OF D-LINK'S PRODUCTS

D-LINK SHALL NOT BE LIABLE UNDER THIS WARRANTY IF ITS TESTING AND EXAMINATION DISCLOSE THAT THE ALLEGED DEFECT IN THE PRODUCT DOES NOT EXIST OR WAS CAUSED BY THE CUSTOMER'S OR ANY THIRD PERSON'S MISUSE, NEGLIGENCE, IMPROPER INSTALLATION OR TESTING, UNAUTHORIZED ATTEMPTS TO REPAIR, OR ANY OTHER CAUSE BEYOND THE RANGE OF THE INTENDED USE, OR BY ACCIDENT, FIRE, LIGHTNING OR OTHER HAZARD.

LIMITATION OF LIABILITY

IN NO EVENT WILL D-LINK BE LIABLE FOR ANY DAMAGES, INCLUDING LOSS OF DATA, LOSS OF PROFITS, COST OF COVER OR OTHER INCIDENTAL, CONSEQUENTIAL OR INDIRECT DAMAGES ARISING OUT OF THE INSTALLATION, MAINTENANCE, USE, PERFORMANCE, FAILURE OR INTERRUPTION OF A D-LINK PRODUCT, HOWEVER CAUSED AND ON ANY THEORY OF LIABILITY. THIS LIMITATION WILL APPLY EVEN IF D-LINK HAS BEEN ADVISED OF THE POSSIBILITY OF SUCH DAMAGE.

IF YOU PURCHASED A D-LINK PRODUCT IN THE UNITED STATES, SOME STATES DO NOT ALLOW THE LIMITATION OR EXCLUSION OF LIABILITY FOR INCIDENTAL OR CONSEQUENTIAL DAMAGES, SO THE ABOVE LIMITATION MAY NOT APPLY TO YOU.

Registration Card

Print, type or use block letters.

Your name: Mr./Ms _____

Organization: _____ Dept. _____

Your title at organization: _____

Telephone: _____ Fax: _____

Organization's full address: _____

Country: _____

Date of purchase (Month/Day/Year): _____

| Product Model | Product Serial No. | * Product installed in type of computer (e.g., Compaq 486) | * Product installed in computer serial No. |
|---------------|--------------------|--|--|
| | | | |
| | | | |
| | | | |
| | | | |
| | | | |

(* Applies to adapters only)

Product was purchased from:

Reseller's name: _____

Telephone: _____ Fax: _____

Reseller's full address: _____

Answers to the following questions help us to support your product:

1. Where and how will the product primarily be used?

Home Office Travel Company Business Home Business Personal Use

2. How many employees work at installation site?

1 employee 2-9 10-49 50-99 100-499 500-999 1000 or more

3. What network protocol(s) does your organization use ?

XNS/IPX TCP/IP DECnet Others _____

4. What network operating system(s) does your organization use ?

D-Link LANsmart Novell NetWare NetWare Lite SCO Unix/Xenix PC NFS 3Com 3+Open

Banyan Vines DECnet Pathwork Windows NT Windows NTAS Windows '95

Others _____

5. What network management program does your organization use ?

D-View HP OpenView/Windows HP OpenView/Unix SunNet Manager Novell NMS

NetView 6000 Others _____

6. What network medium/media does your organization use ?

Fiber-optics Thick coax Ethernet Thin coax Ethernet 10BASE-T UTP/STP

100BASE-TX 100BASE-T4 100VGAnyLAN Others _____

7. What applications are used on your network?

Desktop publishing Spreadsheet Word processing CAD/CAM

Database management Accounting Others _____

8. What category best describes your company?

Aerospace Engineering Education Finance Hospital Legal Insurance/Real Estate Manufacturing

Retail/Chainstore/Wholesale Government Transportation/Utilities/Communication VAR

System house/company Other _____

9. Would you recommend your D-Link product to a friend?

Yes No Don't know yet

10. Your comments on this product? _____

PLEASE
PLACE STAMP
HERE

TO:

Three vertical lines for recipient address.

D-Link®

Free Manuals Download Website

<http://myh66.com>

<http://usermanuals.us>

<http://www.somanuals.com>

<http://www.4manuals.cc>

<http://www.manual-lib.com>

<http://www.404manual.com>

<http://www.luxmanual.com>

<http://aubethermostatmanual.com>

Golf course search by state

<http://golfingnear.com>

Email search by domain

<http://emailbydomain.com>

Auto manuals search

<http://auto.somanuals.com>

TV manuals search

<http://tv.somanuals.com>