

# D-Link Quick Installation Guide

This product can be set up using any current web browser, i.e., Internet Explorer, Netscape Navigator.



**DSL-302G**  
ADSL USB/Ethernet  
Modem

## Read This First!

This Quick Installation Guide introduces you to your new DSL modem and walks you step-by-step through the process of installing the modem on your computer. Please make sure to follow each step carefully. For more detailed information on the functions and features of the DSL modem, please refer to the User's Manual located on the included CD-ROM.



Before continuing, you will need to know the VPI/VCI numbers and the encapsulation method (LLC or VC Mux) used for the ADSL connection. If you do not know these information, please contact your ISP.

## Check Your Package Contents



**DSL-302G ADSL USB/Ethernet Modem**



**CD-ROM (containing Manual, Drivers and Warranty)**



**Ethernet (CAT5 UTP) Cable (blue)**



**RJ-11 Telephone Cord (black)**



**USB Cable (transparent)**



**Device Feet (one pair)**



**9V DC, 1A Power Adapter**

If any of the above items are missing, please contact your reseller.



Using a power supply with a different voltage rating will damage and void the warranty for this product.

# 1 Pre-Installation

This section explains how to physically connect the DSL-302G to your computer. Before you begin, visually inspect the rear of your computer and make sure it has either a USB or Ethernet port as shown below. If you are uncertain as to the different type of ports, please consult the manuals that came with your computer. If your computer does not have one of the two ports, you need to purchase and install a USB or Ethernet adapter before proceeding with the installation.

## Requirements:

### For USB:

- Your computer has a functional USB port.
- Only for Microsoft Windows 98SE/Me/2K/XP Operating Systems.



USB Port

### For Ethernet:

- Your computer has pre-installed or built-in Ethernet adapter.
- Can be used for all Operating Systems.



Ethernet Port

Make sure that your ADSL service is enabled. If you are not sure, please contact your ISP to verify. Since both ADSL and your telephone service uses the same telephone line wire, you are susceptible to noise and interference. To eliminate these noise, you must use a micro-filter with all other telephony devices such as your telephone, fax machine, and answering machine. Please refer to the Appendix at the end of this guide for more information.

For USB Installation, please continue to step **2**  
For Ethernet Installation, please continue to step **3**

# 2 USB Installation (for Windows 98SE/Me/2K/XP)

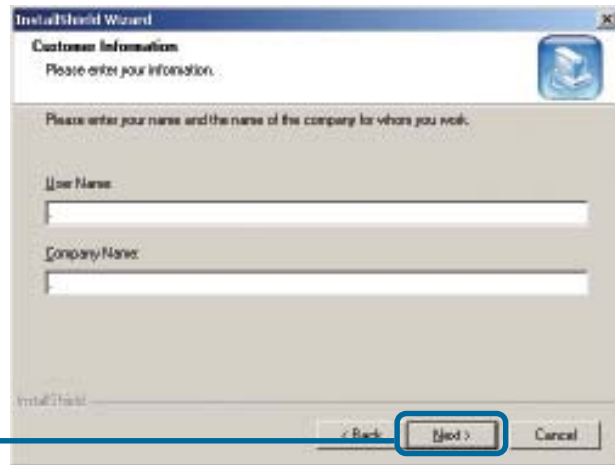
Insert the DSL-302G CD-ROM into the computer. The following auto-run screen will appear:

Click on **Install Drivers & Utility**



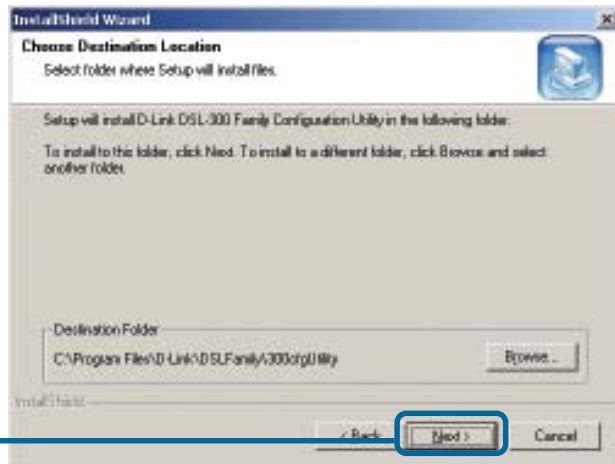


Click **Next**



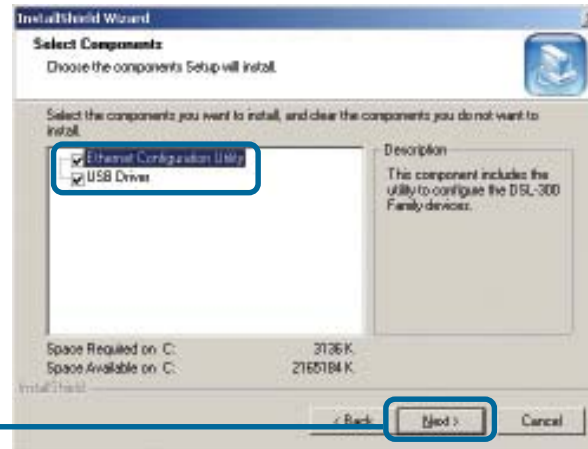
Enter in a **User Name** and **Company** name.

Click **Next**

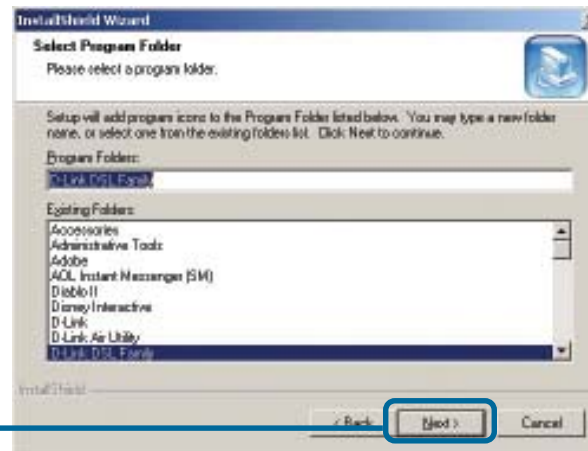


Click **Next**

Make sure both boxes are checked.



Click **Next**



Click **Next**

Follow the on-screen instructions to physically connect the modem before moving further.



Click **Next**



Click **Finish** to reboot the computer

After the computer restarts, the USB drivers should now be installed. Please proceed to step **4** to configure the DSL-302G.

### **3** Ethernet Installation (for all Operating Systems)

Connect the DSL-302G to a suitable power source.

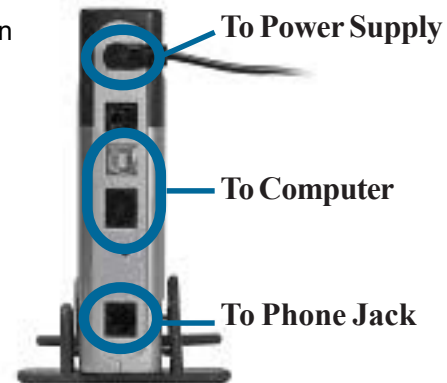


Once the unit is powered on, insert one end of the included Ethernet cable into the Ethernet port, and the other end into the Ethernet port of the NIC card installed on your computer. Make sure your computer is turned on.

**Note:** If the cable connection is good, a green LED on the front of the device labeled Ethernet/Link will glow steadily.

Now connect the telephone cable to the ADSL port on the back of the device. Connect the other end of the cable to the telephone wall jack.

**Note:** If the ADSL Link LED does not glow green within three minutes of it being connected, check all your cable connections to make sure they are correct and securely installed.



Please proceed to step **4** to configure the DSL-302G.

## **4** ADSL Configuration

The Configuration Utility allows you to change the VPI/VCI settings of the DSL-302G to connect to your ISP and also displays ADSL connection information. The DSL-302G comes with a default VPI of "0" and a VCI of "35". If your DSL service provider uses different numbers, change these numbers on the modem to match those of your provider. If you are unsure of the VPI/VCI numbers, check all documentation provided by your DSL provider or contact them to get this necessary information. The DSL modem will not work unless the VPI and VCI numbers exactly match those of your DSL provider. Follow the steps below to change the VPI/VCI if necessary.

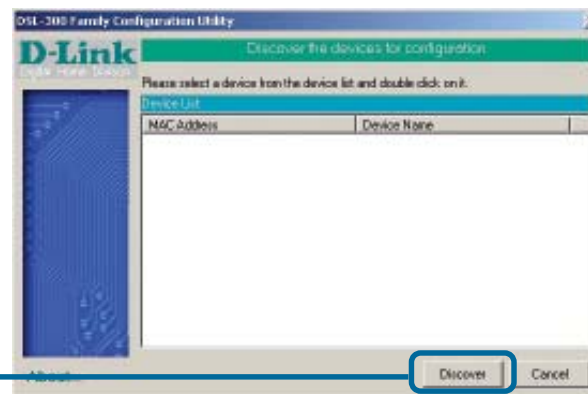
There should be a DSL-300 Family Configuration Utility icon on your desktop. (Alternatively, you can go to Start>Programs>D-Link DSL Family>DSL-300 Family Configuration Utility) If it is not installed, please refer back to step 2 to install the **Ethernet Configuration Utility**.



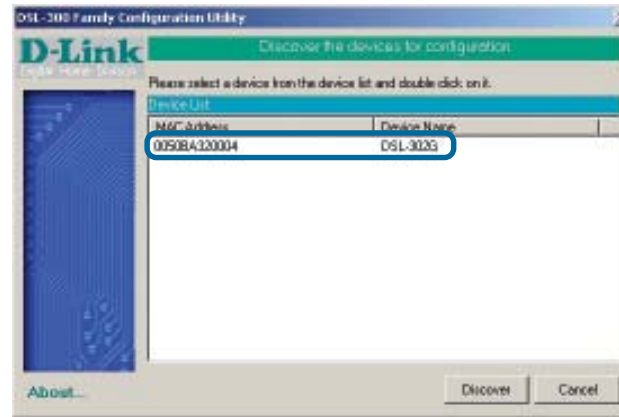
Double-Click on the icon.

When the utility is launched, it will search for any DSL-302G on the network and display them in the table. If the modem does not appear in a few seconds, click the **Discover** button.

Click



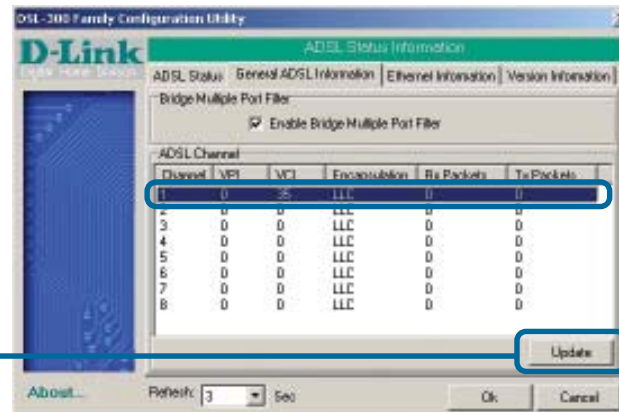
Double-click on the MAC address of the DSL-302G or highlight it and press the **Enter** or **Return** key.



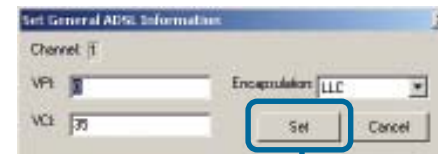
You should now be prompted for the password. The default password is “**admin**”.



Click on the **General ADSL Information** tab. The new menu lists 8 channels available for configuration. You need to change settings for only one channel in order to use the ADSL modem. Click on the first channel listed to highlight it, this is the default channel used by the modem.



In the new menu screen you must enter new values for the VPI and VCI settings. You also must choose the Encapsulation method used (LLC or VC Mux) from the pull-down menu. Your service provider will supply this information.

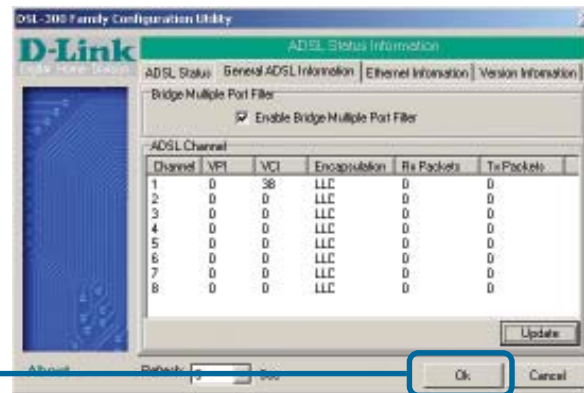


Click **Set**

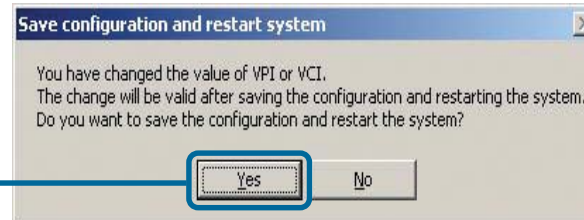
**Note:** The default settings for the modem are VPI of “0” and a VCI of “35”. The default encapsulation method used is LLC.



You will be returned to the **General ADSL Information** screen.

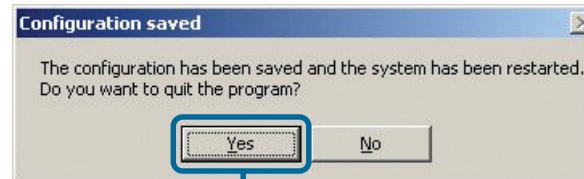


Click **Ok**



Click **Yes**

The modem will save the new settings and automatically restart.



Click **Yes**

**Note:** Do not manually restart the modem. It will automatically restart by itself. When the DSL-302G has been fully restarted, then it will be ready for use.

The power LED, status LED, ADSL LED, and Ethernet or USB LED should now remain solid green.

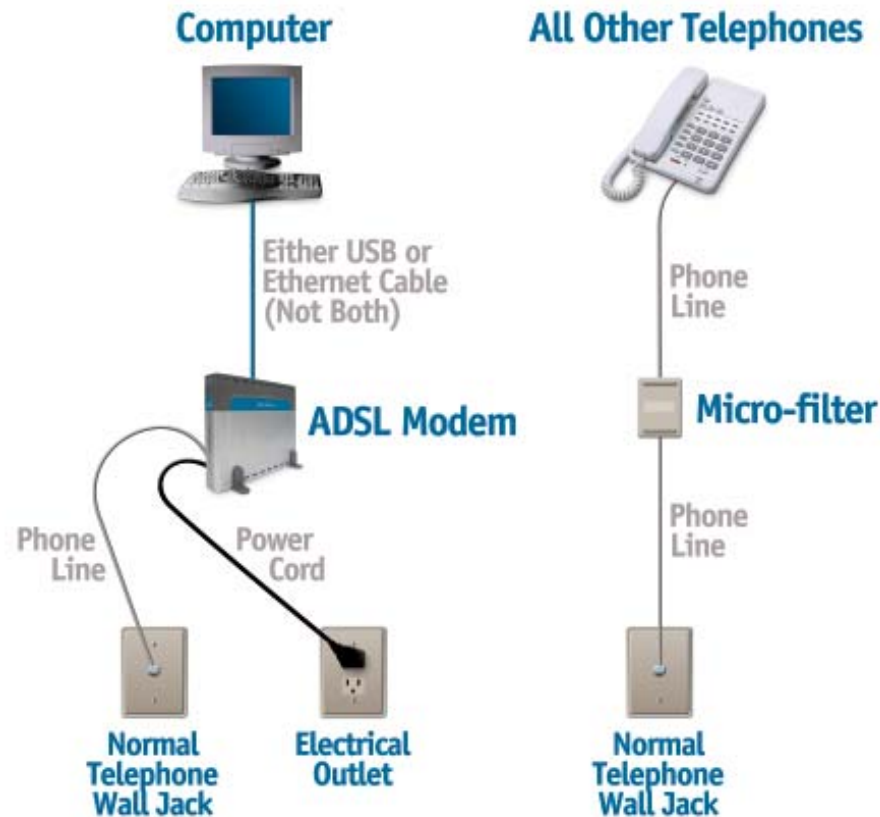


# 5 Your Setup is Complete!

You have now installed and configured the DSL-302G modem.

Your ISP may require you to install other software such as a PPPoE client. If so, please do that now.

Your connection may look similar to this:



# Appendix

## Installing Micro-filters

Micro-filters are obtained from your DSL provider and must be installed on every normal telephone in the house, apartment or office where you are installing the DSL modem. Micro-filters ensure that the new DSL data signal and the normal voice signal do not interfere with each other as they travel on the same telephone line.

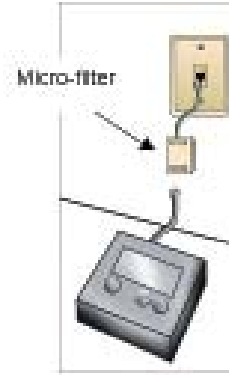
Install a micro-filter on every telephone other than the one used for the DSL modem. If it's not a DSL modem, it needs a micro-filter.



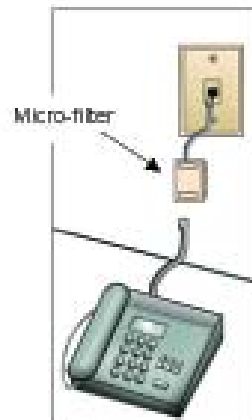
Normal phones



Answering machines



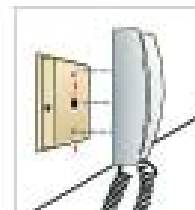
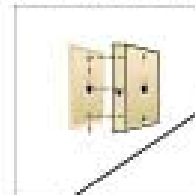
Caller ID boxes



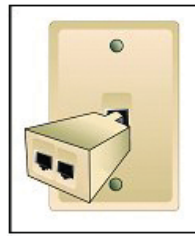
1. Plug a micro-filter between all telephone devices and the wall jacks (as shown on this page) for every device except the DSL modem

2. For wall-mounted phones, use the special wall-mounted micro-filter as shown on the right.

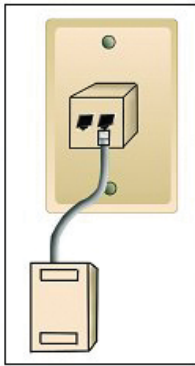
Wall-mounted Phones



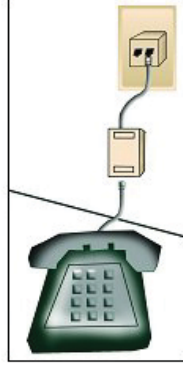
3. If there is only one telephone wall jack close to your computer and you wish to share this jack with a normal telephone, install a 2-way splitter and attach a micro-filter for the normal phone. The unused splitter jack can be used for the DSL modem as shown on this page.



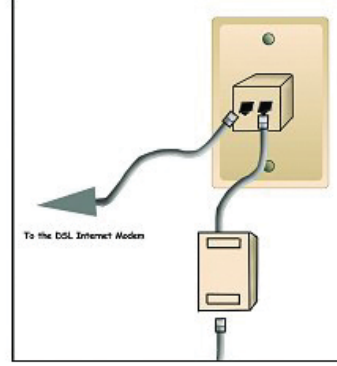
3a. Attach a 2-way splitter to the telephone wall jack.



3b. Connect a micro-filter to one side of the 2-way splitter.



3c. Connect a normal telephone, fax machine, etc. to the micro-filter.



3d. Use the other receptacle in the 2-way splitter for the DSL modem. The DSL connection cannot use a micro-filter.

All phones, faxes, answering machines, etc. must have micro-filters installed before you can use the DSL modem. If you do not have enough micro-filters and wish to begin using the DSL modem, unplug the devices that do not have a micro-filter and leave them unplugged until you can obtain more micro-filters.



## Free Manuals Download Website

<http://myh66.com>

<http://usermanuals.us>

<http://www.somanuals.com>

<http://www.4manuals.cc>

<http://www.manual-lib.com>

<http://www.404manual.com>

<http://www.luxmanual.com>

<http://aubethermostatmanual.com>

Golf course search by state

<http://golfingnear.com>

Email search by domain

<http://emailbydomain.com>

Auto manuals search

<http://auto.somanuals.com>

TV manuals search

<http://tv.somanuals.com>