

## Contents of Package:

- DFE-528TX Ethernet PCI Adapter
- Printed Quick Installation Guide
- CD with Manual and Drivers

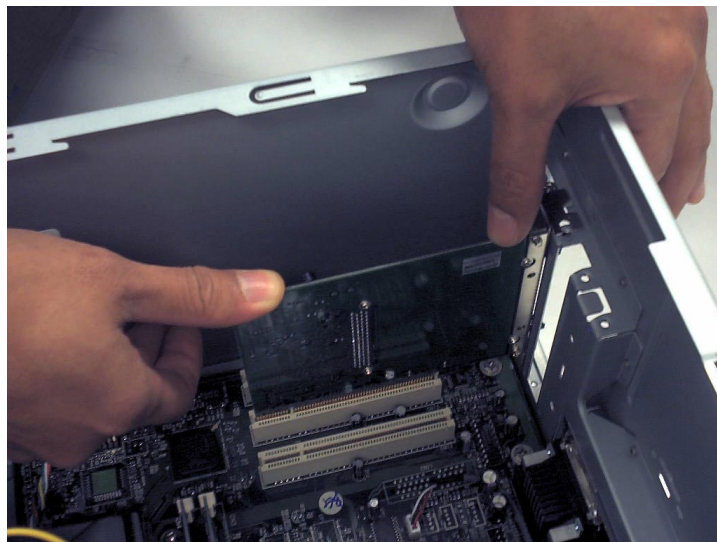
*If any of the above items are missing, please contact your reseller.*

# 1

## Installing the DFE-528TX

**Before you start, make sure to turn off your computer and unplug the power cord.**

*Note: To avoid damage caused by static electricity, make sure to properly ground yourself by first touching a metal part of your computer to discharge any static electricity before working with the DFE-528TX 10/100 Mb Ethernet PCI Adapter.*

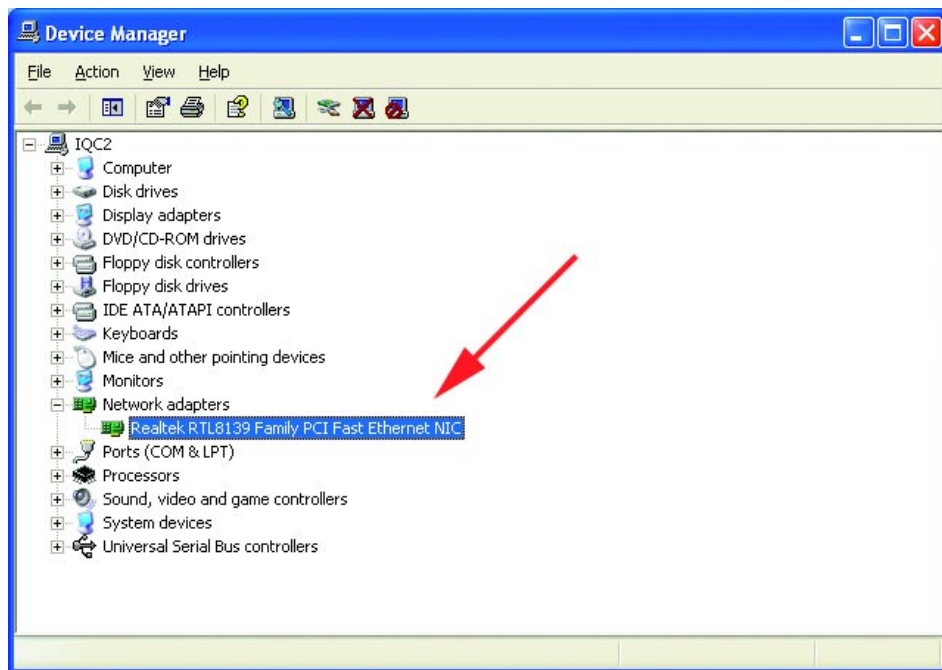


- **Remove** the back cover of the computer.
- **Install** the DFE-528TX carefully and firmly into an available PCI slot which is usually “white” or “cream” colored
- **Secure** the DFE-528TX with a screw.
- **Replace** the computer’s cover.

# 2

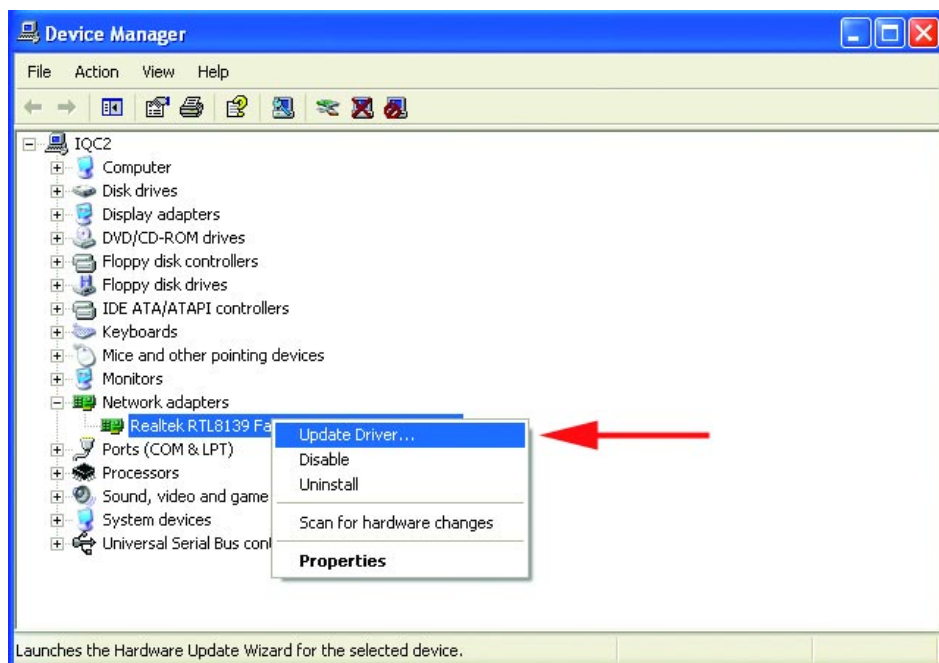
## Installing the Drivers

**PLUG IN THE POWER CORD AND TURN ON YOUR COMPUTER.**



Go to **START>SETTINGS>CONTROL PANEL>SYSTEM>HARDWARE>DEVICE MANAGER.** Scroll down to **“Network Adapters.”**

For most installations, Windows XP will automatically load **“Realtek”** drivers as shown at left.



Right-click on **“Realtek.”** Click **“Update Driver.”** The driver installation is complete.

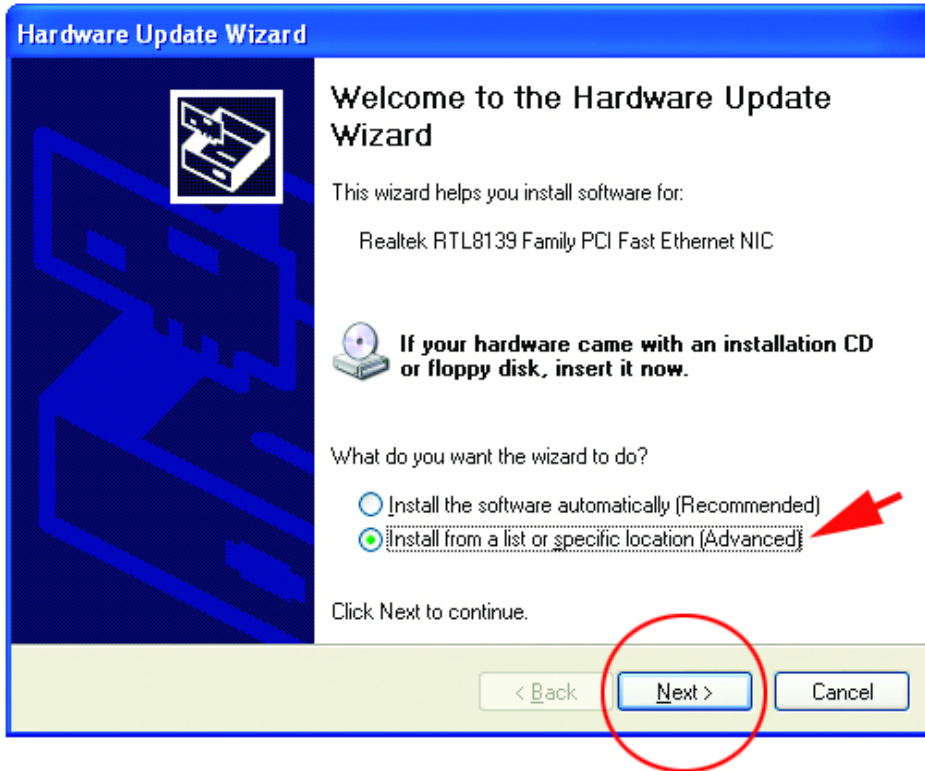
If the **“Realtek”** driver does not appear under **“Network adapters,”** go to **START>CONTROL PANEL.** Switch to **“Classic View.”** Double-click on **“Add Hardware.”** The **“Hardware Update**

**Wizard”** will appear. Follow the **“Hardware Update Wizard”** to complete the driver installation. (Please see Step 3.)

# 3

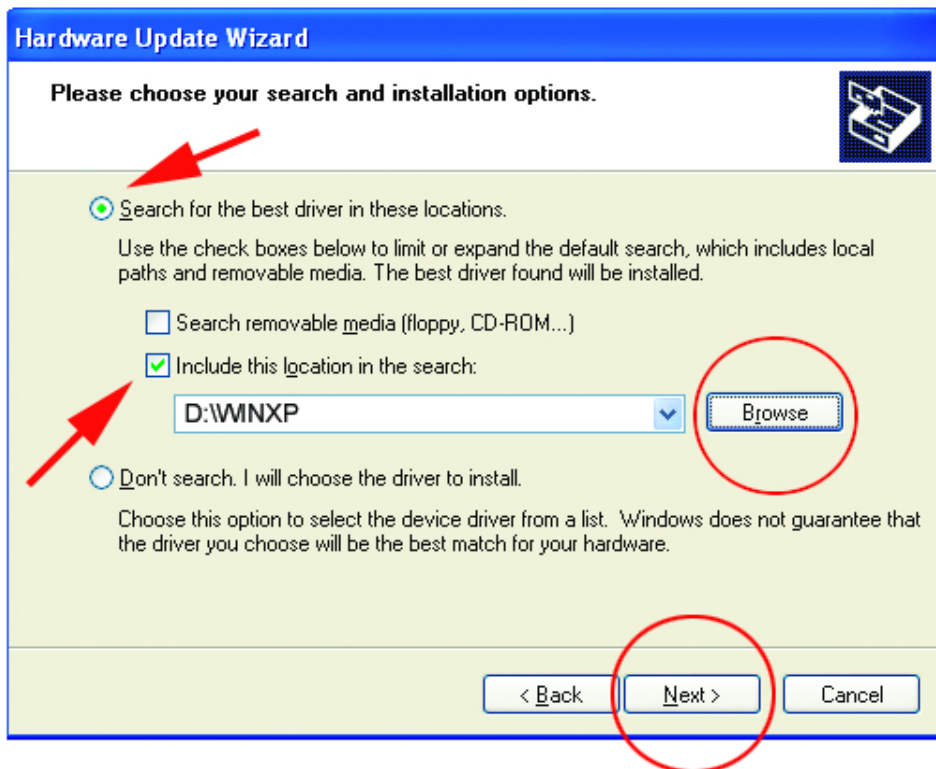
## Using the Hardware Update Wizard

**INSERT THE DFE-528TX DRIVER CD INTO THE CD-ROM DRIVE.**



This “Welcome” screen will appear. Select “Install from a list or specific location.”

Click “Next.”



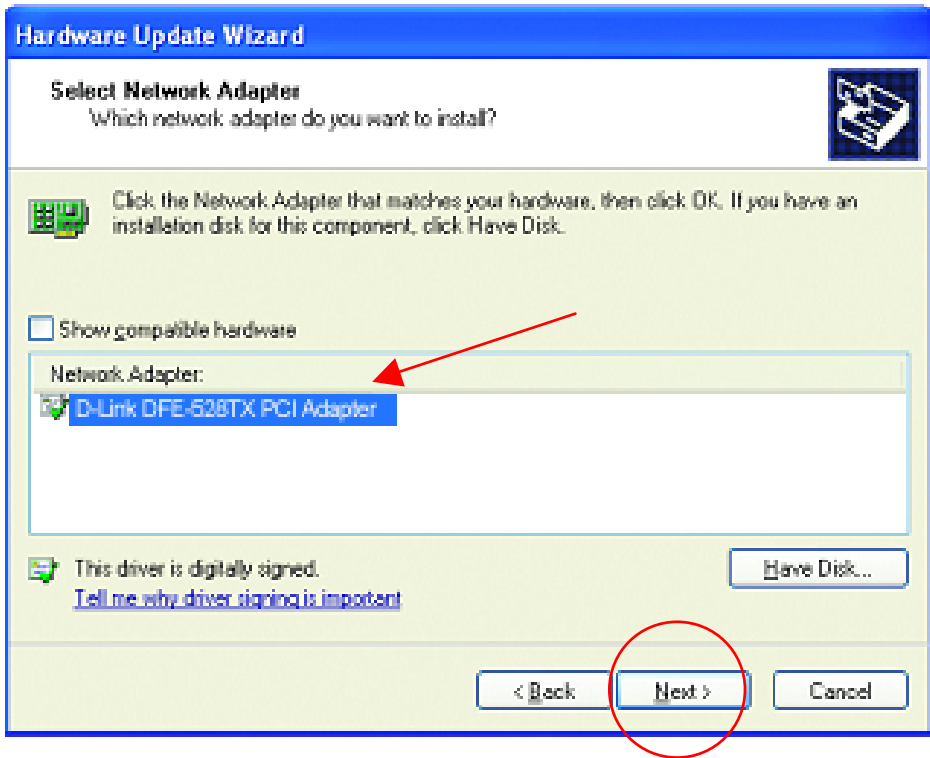
Select “Search for the best drivers in these locations.”

“Browse” for the drivers on the driver CD. (i.e., D:\WINXP, where “D” refers to the CD-ROM drive.)

Click “Next.”

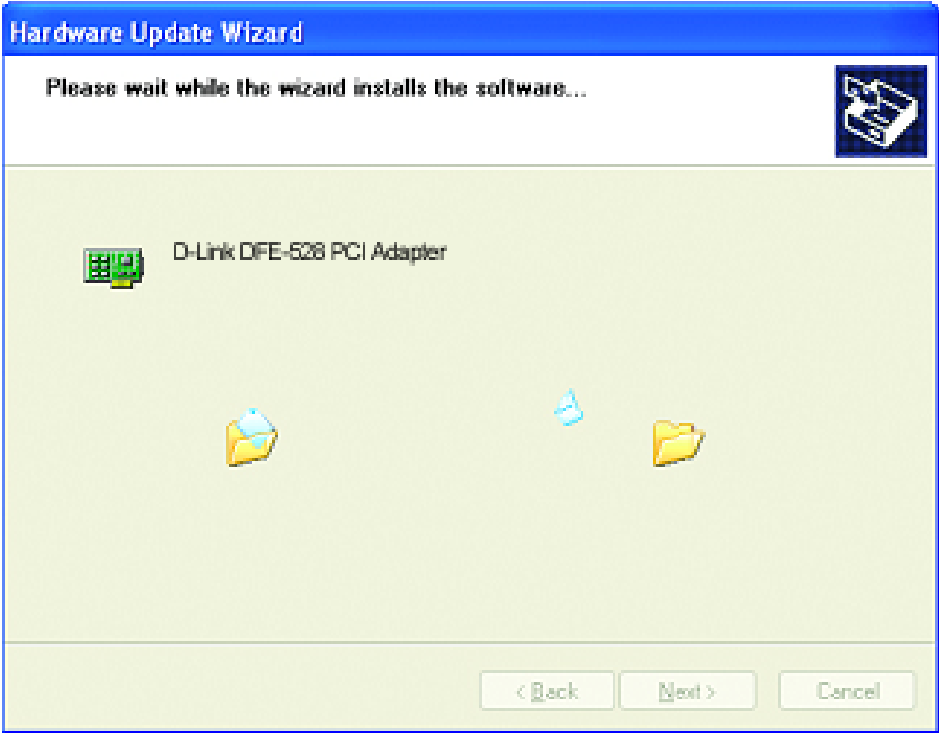
# 3

## Using the Add Hardware Wizard (continued)



Click on “**D-Link DFE-528TX PCI Adapter**” as shown.

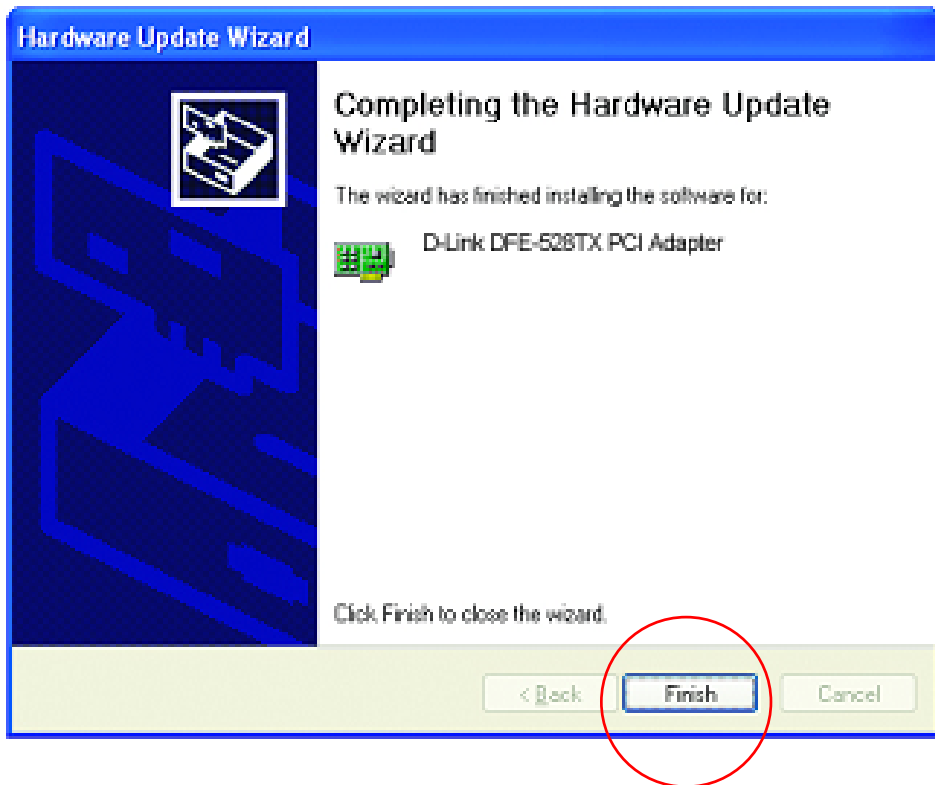
Click “**Next.**”



Windows XP will load the drivers and required system files.

# 3

## Using the Add Hardware Wizard (continued)

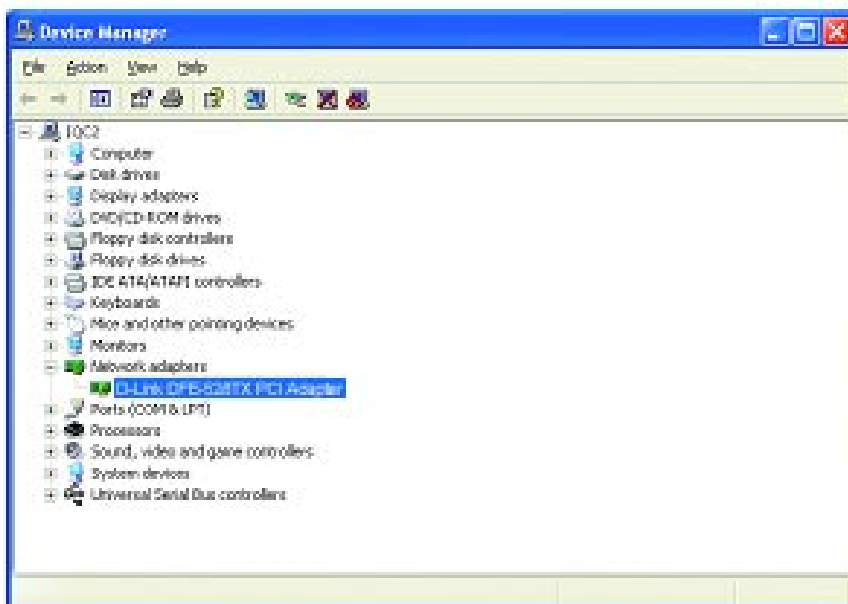


The DFE-528TX driver installation is complete.

Click “Finish.”

# 4

## Checking the Installation



Go to: START>SETTINGS>CONTROL PANEL>SYSTEM>HARDWARE>DEVICE MANAGER.

To check that the installation of the **DFE-528TX** was successful, scroll down and click on “**Network adapters.**” You have a successful installation when “**D-link DFE-528TX**” appears (with no errors) as shown at left.

# D-Link®

Quick Install Guide  
for Windows 98, ME, 2000

**DFE-528TX**  
Fast Ethernet Adapter

## Contents of Package:

DFE-528TX Fast Ethernet Adapter  
Quick Install Guide  
CD-ROM, which includes driver software

*If any of the above items are missing, please contact your reseller.*

**DO NOT insert the DFE-528TX into the computer's PCI slot before installing the drivers.**

## Pre-installation Procedures:

If you have already installed the DFE-528TX into a PCI slot, advanced users may utilize the "Add New Hardware Wizard" to manually specify the location of the driver on the CD-ROM. **Otherwise, we strongly recommend canceling the "Add New Hardware Wizard" and instead using the "Install Drivers" program in the CD-ROM.**

Here is **quick summary** of the proper installation procedure:

- **Run** the driver installation from the DFE-528TX CD-ROM.
- **Turn Off** the computer and **install the DFE-528TX** into the PCI slot.
- **Restart** the computer to complete the installation.

1

## Installing the DFE-528TX Drivers

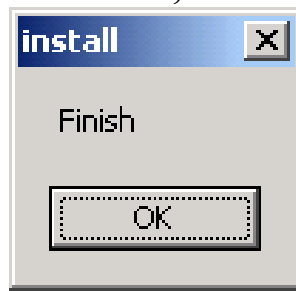
- Turn **ON** the computer.
- Insert the **driver CD**, which is included with the DFE-528TX, into the CD-ROM drive.

The following window will appear.



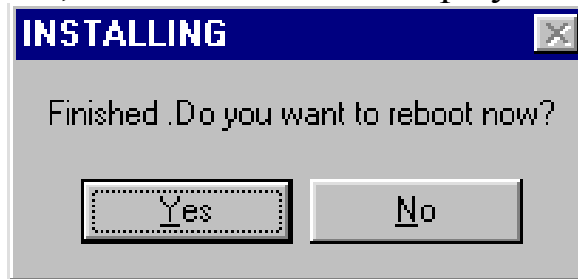
Click on "Install Drivers."

For **Windows 2000 and Windows ME** users, the following screen will appear.



Click OK

For **Windows 98/98SE** users, this screen will be displayed.

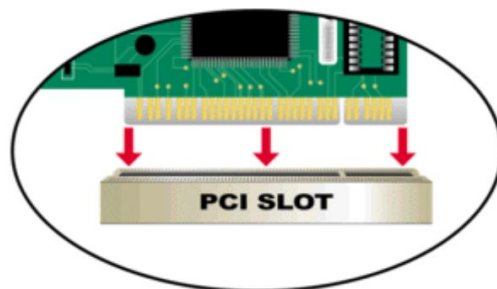


Click Yes

**Next, TURN OFF the computer and unplug the power cord.**

**2**

## **Installing the DFE-528TX into the computer's PCI slot**



*Note: To avoid static electric charges, please touch an unpainted screw on the outside of the power supply before installing or working with the DFE-528-TX.*

- Turn off your computer and **unplug** the power cord.
- **Remove** the back cover of your computer. (Refer to your computer's manual if needed.)
- **Locate** an available PCI slot. PCI slots are usually white or cream colored.

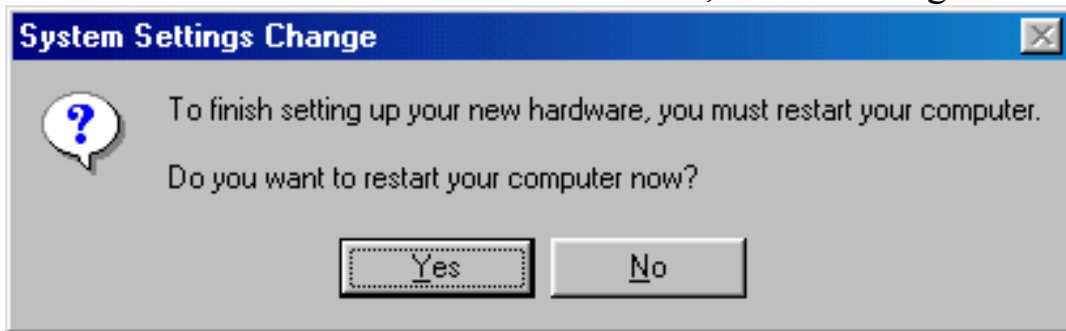
- **Remove** the backplate (the small piece of metal that covers the opening for the PCI card on the back cover that you just removed.)
- **Insert** the DFE-528TX carefully and firmly into the PCI slot.
- **Secure** the DFE-528TX with the screw from the backplate.
- **Replace** your computer's cover.

# 3

## Finishing the Installation

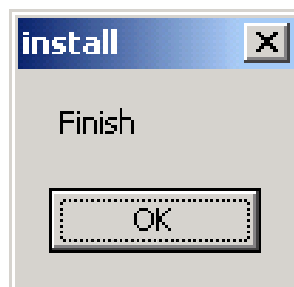
- **TURN ON** the computer.

For **Windows 98/98SE and Windows ME** users, the following screen will appear.



**Click Yes,** to restart the computer.

For **Windows 2000** users, this screen will be displayed.



**Click O.K.,** to complete the installation.

*(Note: Windows 2000 will not require a restart.)*



# 4

## Checking the Installation

- Go to START>RUN.
- Type “winipcfg.” (In Win2000, type “ipconfig/all.”) In some cases it may be necessary to “Release and Renew” the IP address. Make sure to select the DFE-528TX as the specified adapter in the pull down menu.
- If the IP address belongs to the same IP range and subnet mask as the local network, then open the web browser and test the Internet connection.

## Free Manuals Download Website

<http://myh66.com>

<http://usermanuals.us>

<http://www.somanuals.com>

<http://www.4manuals.cc>

<http://www.manual-lib.com>

<http://www.404manual.com>

<http://www.luxmanual.com>

<http://aubethermostatmanual.com>

Golf course search by state

<http://golfingnear.com>

Email search by domain

<http://emailbydomain.com>

Auto manuals search

<http://auto.somanuals.com>

TV manuals search

<http://tv.somanuals.com>