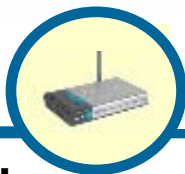


D-Link

Quick Installation Guide

This product can be set up using any current web browser, i.e., Internet Explorer 6 or Netscape Navigator 6.2.3.



DVG-G1402S

Wireless VoIP Router

Before You Begin

1. If you purchased this Router to share your high-speed Internet connection with other computers, you must have an established Internet account from an Internet Service Provider (ISP).
2. It's best to use the same computer that is connected to your router for configuring the DVG-G1402S Wireless VoIP Router. The DVG-G1402S acts as a DHCP server and will assign all the necessary IP address information on your network. See the Quick Installation Guide or the Manual on the CD-ROM for setting each network adapter to automatically obtain an IP address.

Check Your Package Contents



- **DVG-G1402S**
shown with antenna



- **CD-ROM**
containing Manual and Warranty



- **Ethernet Cable**
(CAT5 UTP Straight-Through)



- **12V, 1.2A**
Power Adapter



Using a power adapter with a different voltage rating will damage and void the warranty for this product.

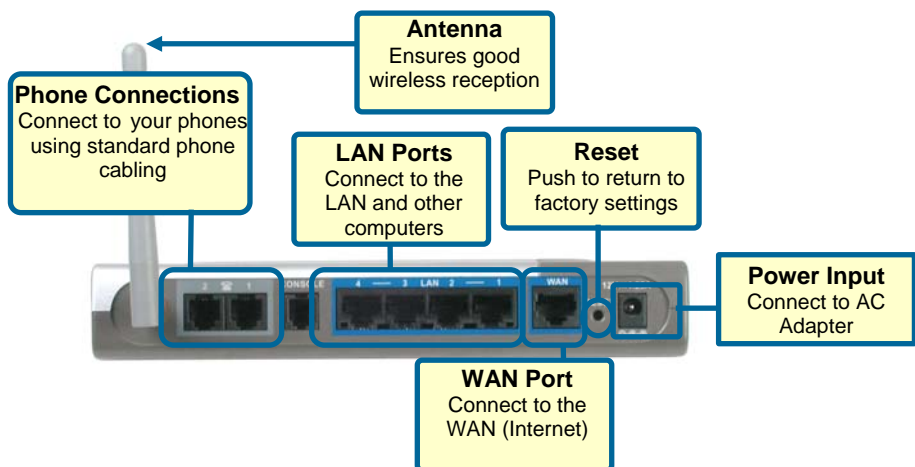
If any of the above items is missing, please contact your reseller.

©2005 D-Link Systems, Inc. All rights reserved. Trademarks or registered trademarks are the property of their respective holders. Software and specifications subject to change without notice. DVG-G1402S Wireless VoIP Router

Download from Www.Somanuals.com. All Manuals Search And Download.

1

Connecting the Router to your Computer



- A.** First, connect the power adapter to the power input at the back panel of the DVG-G1402S and then plug the other end of the power adapter to a wall outlet or power strip. On the front of the device, the Power LED will turn ON to indicate proper operation.
- B.** Insert one end of the Ethernet cable into an Ethernet (LAN) port on the back panel of the DVG-G1402S and the other end of the cable to an Ethernet Adapter or available Ethernet port on your computer.
- C.** Insert one end of the Ethernet Cable (blue) to the LAN or Ethernet port on your Cable or DSL modem, and then connect the other end of the cable to the WAN port of the DVG-G1402S.
- D.** Check the LED display on the front of the Router to confirm that the connections have been made.

2

Configure IP Settings

To connect to the network, make sure the network adapter in your computer is configured properly. Here's how to configure the network adapter to obtain an IP address automatically for the DVG-G1402S Wireless VoIP Router.

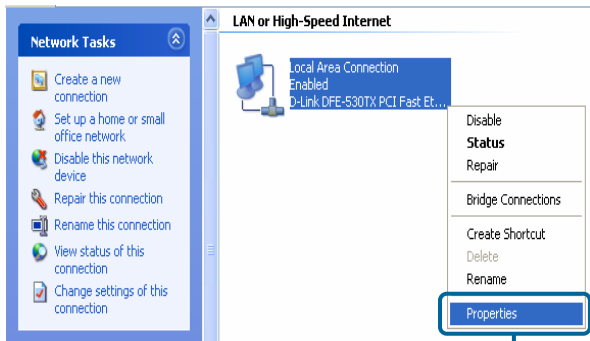
For Microsoft Windows XP

Go to **Start** > select **Settings** > click **Control Panel** > **Double-click** on the **Network Connections** icon



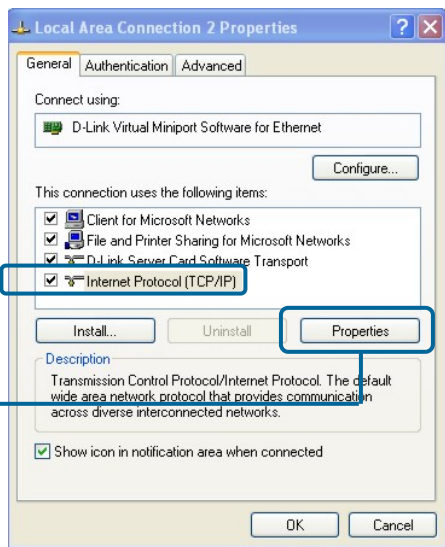
Double-click on **Network Connections**

Right-click the **Local Area Connection** icon, and then select **Properties**.



Select **Properties**

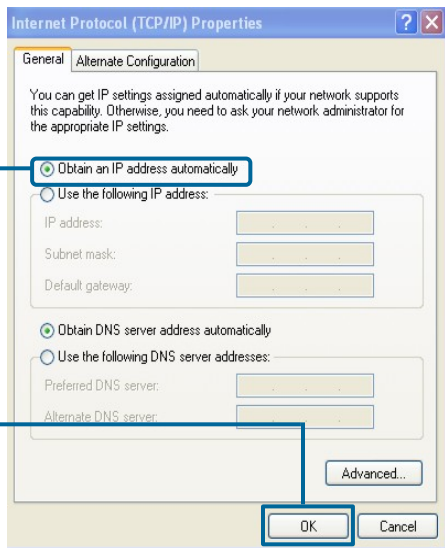
The dialog box displays a list of currently installed network items.



Click **Internet Protocol (TCP/IP)**

Click **Properties**

Make the choice to get the IP settings assigned automatically.



Select **Obtain an IP address automatically**

Click **OK**

3 Connecting Additional Computers to the DVG-G1402S Wireless VoIP Router

Using additional Ethernet (CAT5 UTP) cables, connect your Ethernet-equipped computers to the LAN ports on the back panel of the DVG-G1402S.

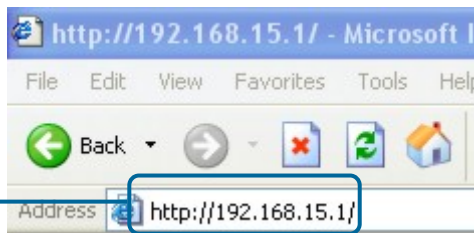
When you have completed the steps in this **Quick Installation Guide**, your connected network should look similar to this:



4

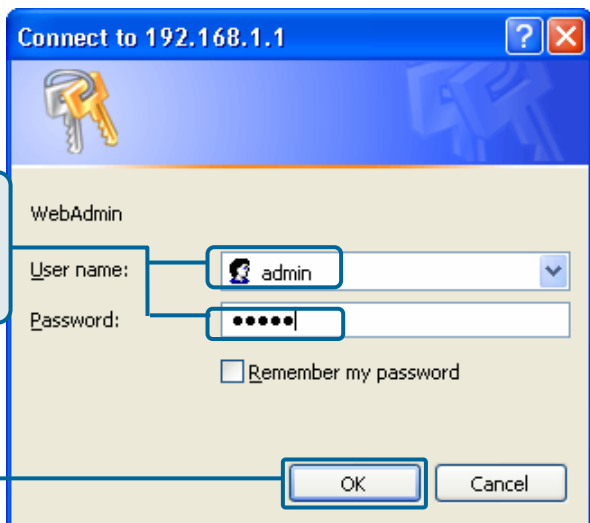
Initial Web Configuration

Open your Web browser and type **http://192.168.15.1** into the URL address box. Press **Enter** or **Return**.



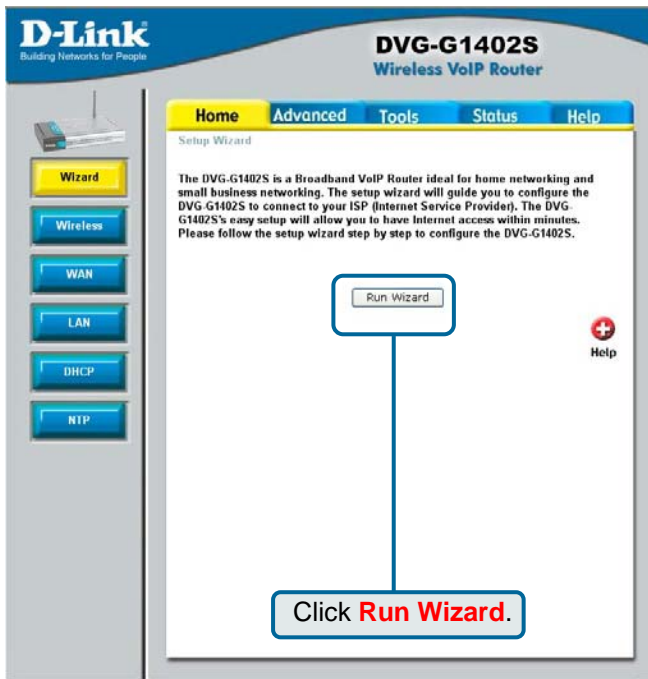
The login dialog box appears:

When you first log in, the User name is **admin** and the Password is also **admin**. These may be changed later.



Click **OK**.

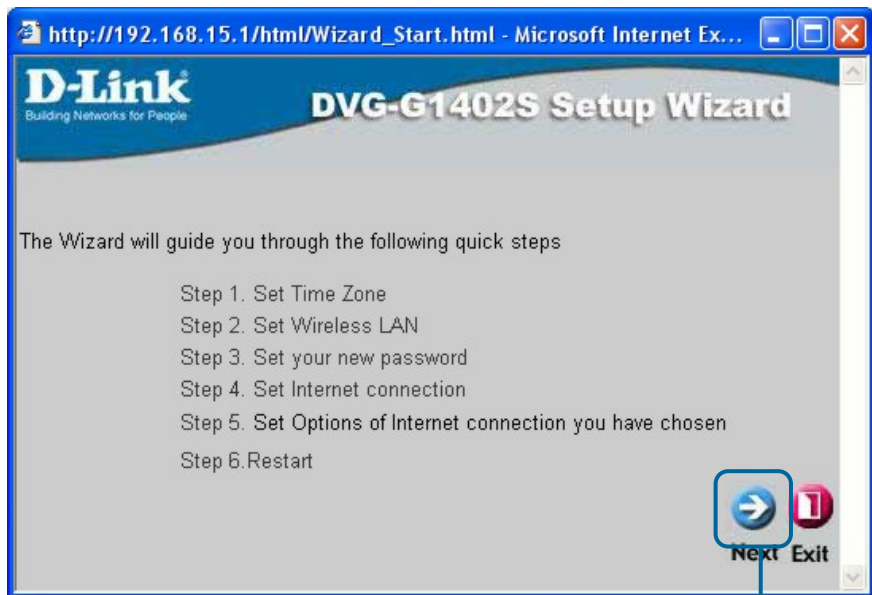
The **Home** window appears:



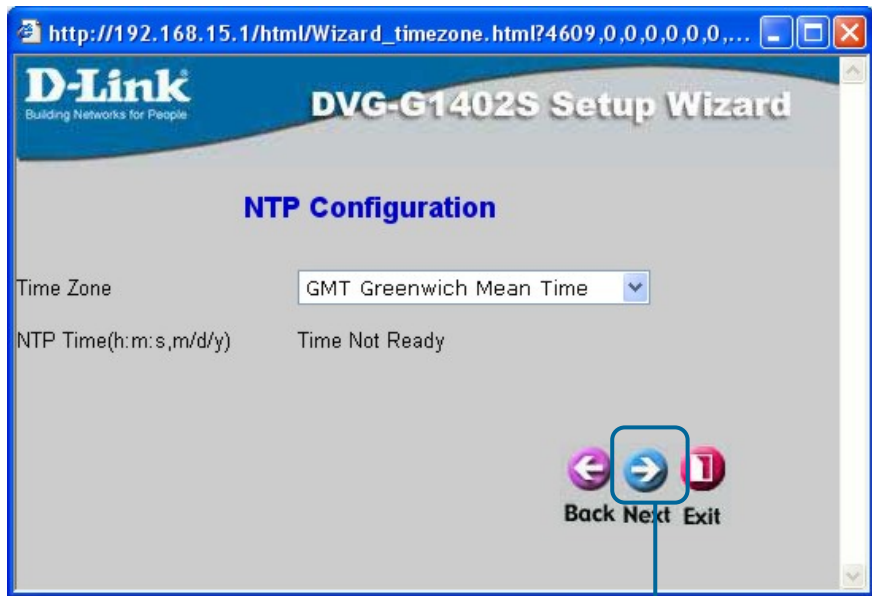
Clicking a hyperlink on the menu on the upper left side of the window brings up a detailed configuration window (see the next section for a brief description of three typical WAN connection examples).

5 Configuring the Router using the Setup Wizard

The following screens are displayed when you click **Run Wizard** from the Web configuration **Home** page, as shown above. Included are typical WAN (Internet) connection examples for **Dynamic IP Address** (DHCP), **Static IP Address**, or **PPPoE** connections. Click **Run Wizard** on the menu above to view the following **Wizard** window:



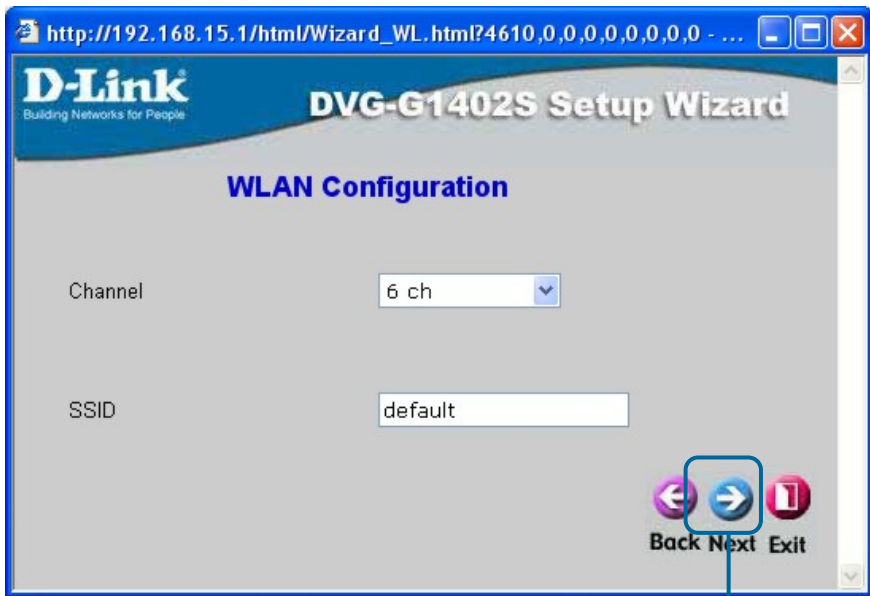
Click the **Next** button.



Click the **Next** button.

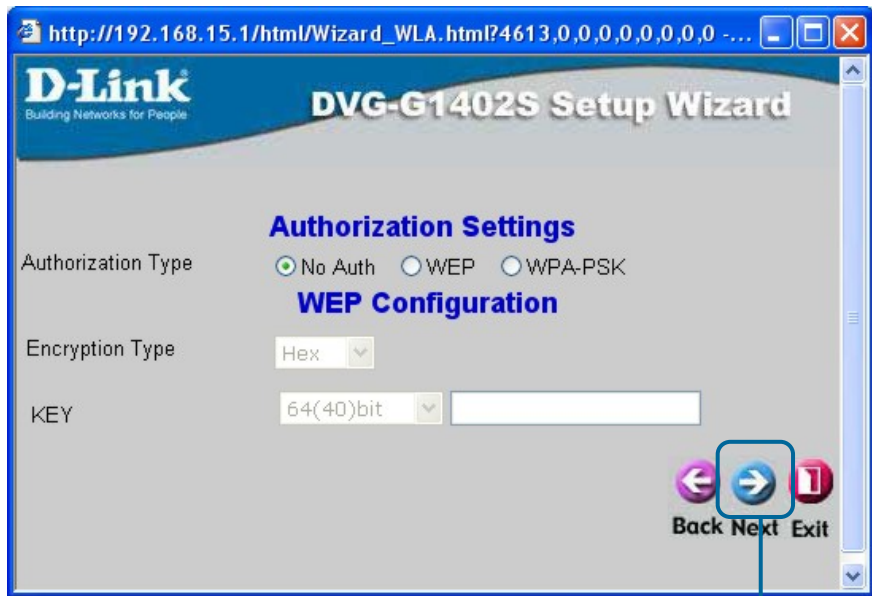
Enter the Time Zone that corresponds to your location on the planet.

Click **Next** to continue.



Enter the WLAN channel and SSID you want to use for your WLAN network. Initially, you can accept the default values and change the router's configuration later.

Click **Next** to continue.



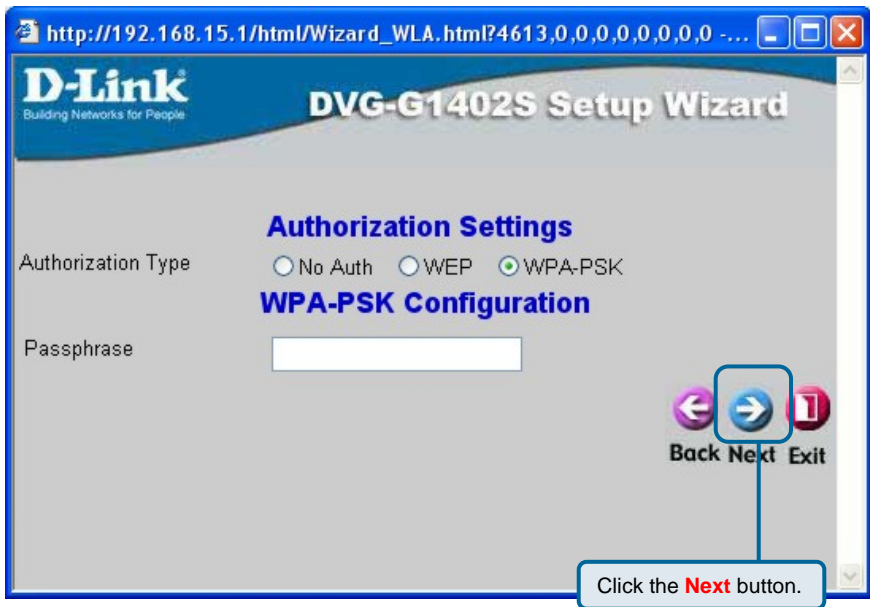
Click the **Next** button.

Enter the **Authorization Settings** you want to use for your WLAN network. Initially, you can accept the default value (**No Auth**) and change the router's configuration later. If you choose use Wireless encryption, click the **WEP** or **WPA-PSK** radio button to open the following screen.

No Auth disables Wireless LAN authentication.

Remember that each PC on your Wireless network will have to have identical Authorization Settings as the router to connect.

Click **Next** to continue.



WPA-PSK (Pre-Shared Key) uses the same encryption as WPA but is implemented differently. All devices on the wireless network share the same key (a Passphrase). Enter the Passphrase in the field above.

Remember that each PC on your Wireless network will have to have identical Authorization Settings as the router to connect.

Click **Next** to continue.

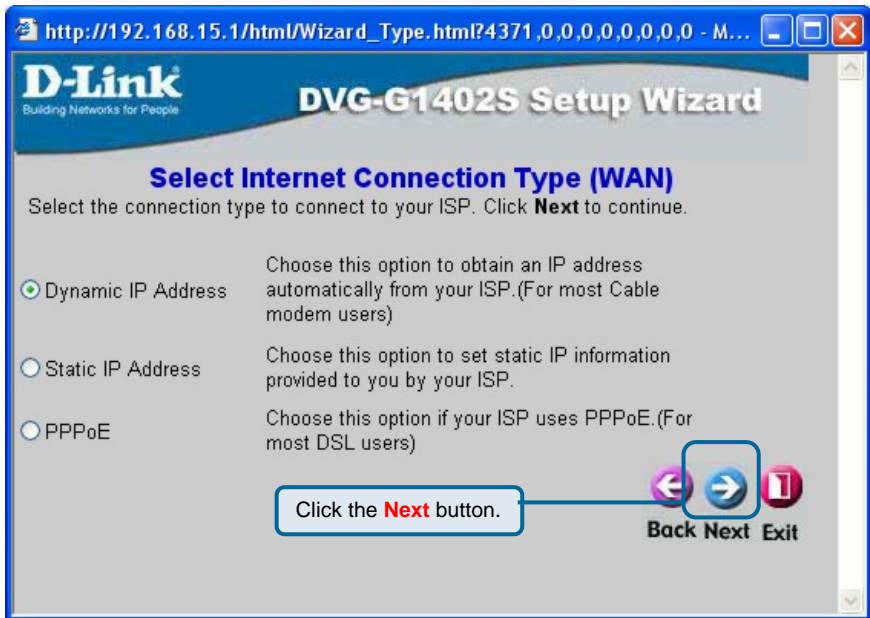


Click the **Next** button.

Enter a new password for the DVG-G1402S in the **Password** field.

Confirm the new password by entering it again into the **Verify Password** field.

Click the **Next** button to continue.



The window above allows you to select between the three most common ways to connect to your ISP's WAN (Internet).

Select **Dynamic IP Address** if your ISP automatically assigns you an IP address. This is the most common way of connecting the DVG-G1402S to another modem, such as a Cable modem.

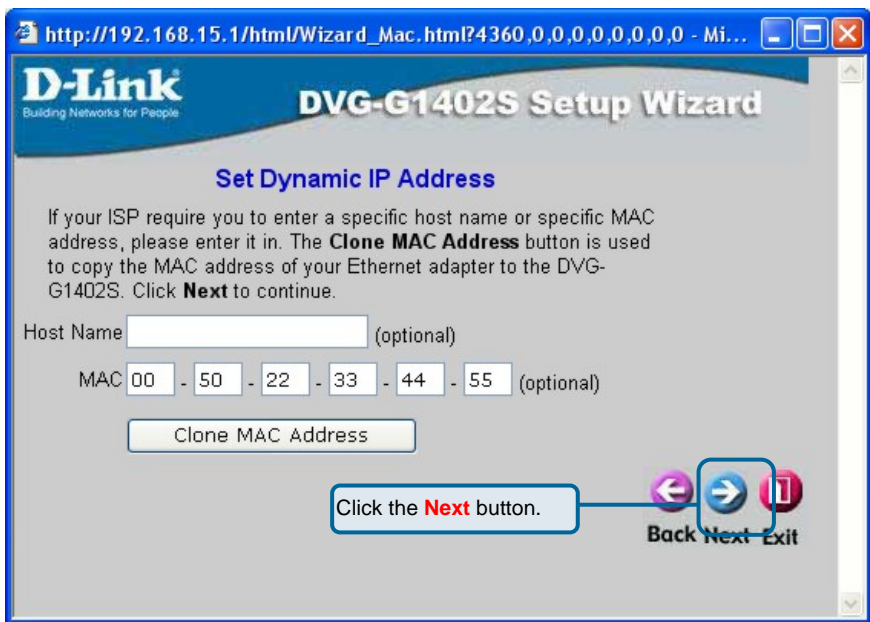
Select **Static IP Address** if your ISP provided you with IP address information that will not change.

Select **PPPoE** if your ISP uses the Point-to-Point over Ethernet (PPPoE) protocol to make the connection. This is the most common connection type for DSL users.

Click the **Next** button to continue.

Dynamic IP Address

Select **Dynamic IP Address** if your ISP automatically assigns you an IP address. This is the most common way of connecting the DVG-G1402S to another modem, such as a Cable modem.



Enter the host name, if required, in the **Host Name** field.

If you are using a Cable modem to make the connection to your ISP's WAN (Internet), click the **Clone MAC Address** button. This will copy the MAC address of your PC's network adapter to the DVG-G1402S. The Cable modem will then recognize the DVG-G1402S and make a valid connection.

Click the **Next** button to continue.



Click the **Restart** button.

Click the **Restart** button to save the settings and restart the router.

Static IP Address

Select **Static IP Address** if your ISP provided you with IP address information that will not change.



Click the **Next** button to continue.



Click the **Restart** button.

Click the **Restart** button to save the settings and restart the router.

PPPoE

Select **PPPoE** if your ISP uses the Point-to-Point over Ethernet (PPPoE) protocol to make the connection. This is the most common connection type for DSL users.



Click the **Next** button to continue.

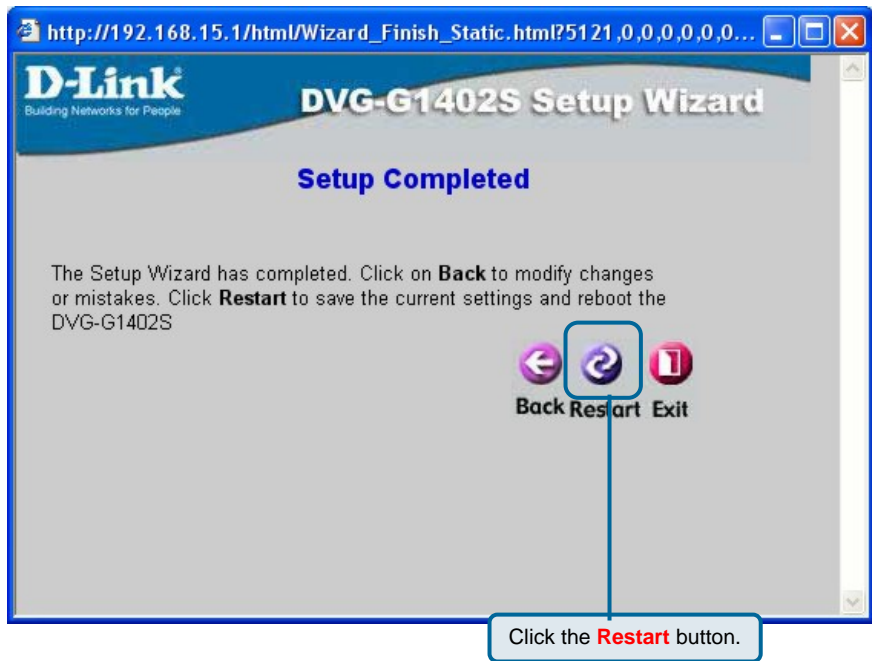


Enter the User Name for your account in the **User Name** field.

Enter the Password for your account in the **Password** field.

Confirm the Password by entering it again in the **Retype Password** field.

Click the **Next** button to continue.



Click the **Restart** button to save the settings and restart the router.

Technical Support

You can find software updates and user documentation on the D-Link website.

Tech Support for customers within the Europe

D-Link Europe (United Kingdom) Ltd

4th Floor, Merit House, Edgware Road, Colindale, London
NW9 5AB United Kingdom

TEL: 44-020-8731-5555 SALES: 44-020-8731-5550

FAX: 44-020-8731-5511 SALES: 44-020-8731-5551

BBS: 44 (0) 181-235-5511

URL: www.dlink.co.uk E-MAIL: info@dlink.co.uk

<http://support.dlink.co.uk>
[email:support@dlink.co.uk](mailto:support@dlink.co.uk)



ISL2G620BLB1
Ver:1.00

Free Manuals Download Website

<http://myh66.com>

<http://usermanuals.us>

<http://www.somanuals.com>

<http://www.4manuals.cc>

<http://www.manual-lib.com>

<http://www.404manual.com>

<http://www.luxmanual.com>

<http://aubethermostatmanual.com>

Golf course search by state

<http://golfingnear.com>

Email search by domain

<http://emailbydomain.com>

Auto manuals search

<http://auto.somanuals.com>

TV manuals search

<http://tv.somanuals.com>