



## Quick Install Guide

### DAP-2565 *AirPremier*® N Dual Band PoE Access Point

powered by  
*CloudCommand*™



Business Class Networking

## System Requirements

**Important: Before connecting, you must register your Access Point online.**

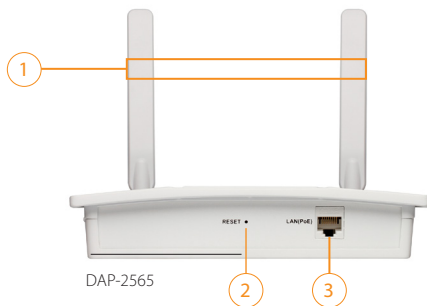
To properly configure your Access Point, you need:

- Internet connectivity
- Computer with a Windows®, Macintosh®, or Linux-based operating system
- Browser with Firefox 3.6, Chrome 5.0, Safari 4.0, Internet Explorer 8.0, or later versions
- Note: your Access Point includes a one-year subscription to the CloudCommand™ online service. After one year, the service requires an annual subscription.

## Package Contents

If any of following items are missing, please contact your reseller:

- D-Link DAP-2565 AirPremier N Access Point powered by CloudCommand™
- Power Adapter
- Power Cord
- CAT5 Ethernet Cable
- Power over Ethernet Base Unit
- Mounting Plate



### ① Antennas

Used to broadcast wireless network and receive connections from clients

### ② Reset Button

Resets the Access Point to factory defaults

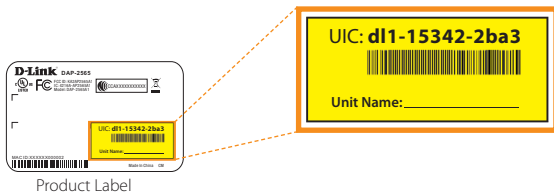
### ③ LAN Port

Connects DAP-2565 to the network via Ethernet cable

Welcome to D-Link's line of cloud-managed wireless Access Points. Leverage the product's online interface to configure, deploy, secure and manage your entire wireless network.

## Registering Your Access Point Online

**Step 1:** Before you can use the Access Point, you must register it online. Locate the Unit Identification Code (UIC) on the yellow label placed on the underside of your Access Point.



**Step 2:** Go to <http://dlink.cloudcommand.com> on a compatible browser (Firefox 3.6, Chrome 5.0, Safari 4.0, Internet Explorer 8.0, or later versions).

**Step 3 :** Choose the appropriate registration scenario.

**New Customer:** If you don't have an existing CloudCommand™ account, create one by following the instructions in our simple step-by-step wizard. The wizard will guide you through the initial setup of your entire wireless network.

**Existing Customer:** If you already have a CloudCommand™ account, please log in. In the left menu bar on your dashboard, click "New Access Point" and follow the instructions.



CloudCommand™ Dashboard

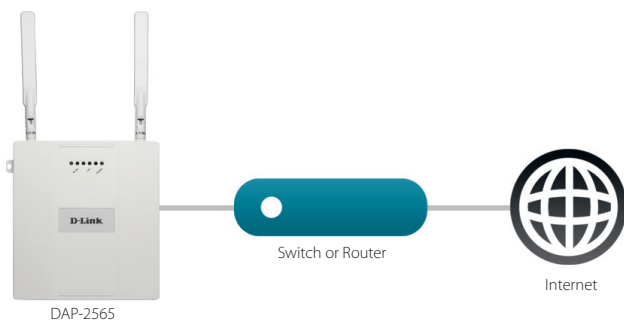
## Option 1: Deploying Your Access Point **with** Dynamic IP Addressing

---

If your network **automatically assigns IP addresses** (DHCP service), connect the Access Point directly to the network by plugging an Ethernet cable into the LAN port on its rear panel. Insert the cable's other end into your existing switch or router with Internet connectivity.

No additional configuration is required. Within a few minutes the Access Point will self configure and become ready to use. You have the option of later reconfiguring your Access Point to a static IP address using the CloudCommand™ interface.

The DAP-2565 is PoE (Power over Ethernet) compliant. You can power it either by using a PoE switch or the included power adapter. Once powered, the green power LED will turn ON to indicate proper operation.



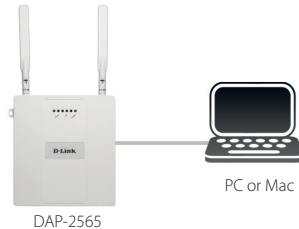
## Option 2:

### Deploying Your Access Point **without** Dynamic IP Addressing

If your network **does not automatically assign IP addresses** (No DHCP service), follow these steps to properly configure your Access Point:

#### Configure APs

**Step 1:** Connect the Access Point directly to your computer using an Ethernet cable.



**Step 2:** Configure the Ethernet connection of your computer as follows:

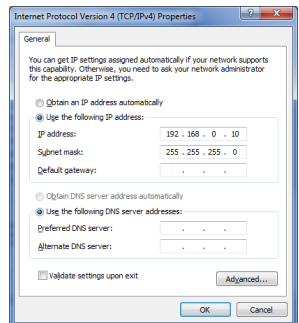
- **Windows® 7** - Click on Start > Control Panel > Network and Internet > Network and Sharing Center > Change Adapter Setting.

**Windows Vista®** - Click on Start > Control Panel > Network and Internet > Network and Sharing Center > Manage Network Connections.

**Windows® XP** - Click on Start > Control Panel > Network Connections.

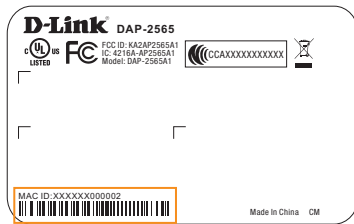
**Windows® 2000** - Right-click My Network Places > Properties.

- Right-click on the Local Area Connection which represents your network adapter and select **Properties**. Highlight **Internet Protocol (TCP/IP)** and click **Properties**.



- Click **Use the following IP address** and enter an IP address that is on the same subnet as your network or the LAN IP address on your new DAP-2565.
- Click **OK** twice to save your settings.

**Step 3:** Launch a web browser and type either the IP address of the access point (default - 192.168.0.50) or the default device name of the access point (http://dlinkapxxxx where xxxx are the last 4 numbers of the MAC address). The MAC Address is on the lower-left corner of the device label (highlighted below).

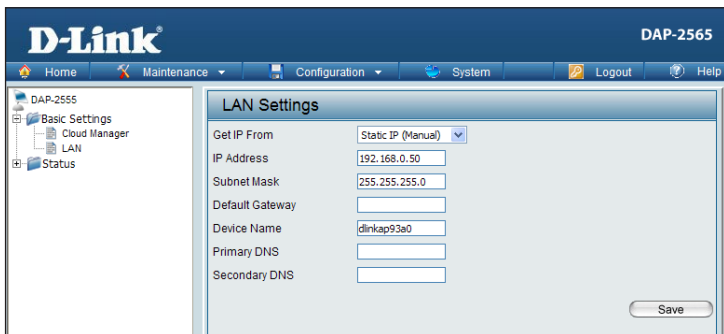


**Step 4:** Once you enter the IP address or device name, the login screen will appear.

The image shows a web-based login interface. At the top is a blue header with the word 'LOGIN' in white. Below the header, the text 'Login to the Access Point:' is displayed. There are two input fields: 'User Name' and 'Password'. The 'User Name' field contains the text 'admin'. The 'Password' field is empty. To the right of the 'Password' field is a button labeled 'Login'.

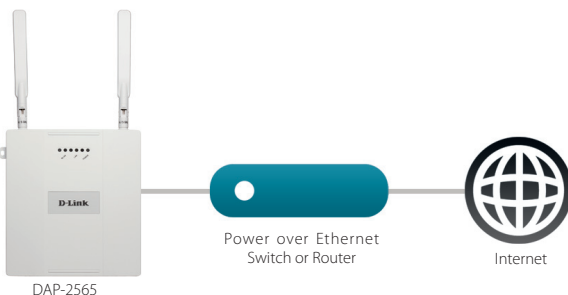
- Type "**admin**" in the User Name field.
- Leave the Password field **blank**.
- Click the **Login** button.

**Step 5:** Once logged in, you will be able to change the Access Point's IP address and DNS information to match your existing network configuration.



**Step 6:** No additional configuration is required. Within a few minutes the Access Point will self configure and become ready to use. You have the option of later reconfiguring your Access Point to a new static IP address using the CloudCommand™ interface.

The DAP-2565 is PoE (Power over Ethernet) compliant. You can power it either by using a PoE switch or the included power adapter. Once powered, the green power LED will turn ON to indicate proper operation.



**Step 7:** Restore setting change in Step 2.

## CloudCommand™ Dashboard

To view your CloudCommand™ dashboard, please log in at <http://dlink.cloudcommand.com>. The dashboard is your starting point to monitor network activity, troubleshoot problems, authorize and disconnect individual devices, or make configuration changes to your Access Point(s).

The screenshot shows the D-Link CloudCommand™ dashboard interface. The top navigation bar includes 'Dashboard', 'Network Manager', 'Alerts & Events', 'Reports', and 'Admin'. The main content area is divided into several sections: 'Status' (2 Alerts), 'Connect' (New Device, New Access Point), 'Manage' (Devices, Access Points, Settings, Admin, Firmware Update), and 'Support' (FAQs, Contact). The central 'Access Point Traffic' section displays three pie charts for Upload, Download, and Total traffic, with a legend for LOBBY and CONF RM 1. Below this are three tables: 'Access Points (1)', 'Primary Network (0 connected devices)', and 'Guest Network (0 connected devices)'. The 'Access Points' table lists CONF RM 1, LOBBY, and AP OFFICE. The 'Primary Network' table lists mywireless with APs PH: Laptop, Jeanne: Desktop, LOBBY, and CONF RM 1. The 'Guest Network' table lists myguest with APs Mark, Deanna, LOBBY, and CONF RM 1. Numbered callouts (1-12) point to: 1. Alerts & Events; 2. Alerts; 3. Reports; 4. Admin; 5. Access Point Traffic; 6. Guest Network table; 7. Primary Network table; 8. Access Points table; 9. Support/FAQs; 10. Connect/New Access Point; 11. Connect/New Device; 12. Status/Alerts.

- 1 Manage Access Points and connected devices
- 2 View alerts and events, and set up alert notifications
- 3 Display detailed activity reports for users and Access Points
- 4 Change configurations, Wi-Fi network names, security, and passwords
- 5 View activity graphs
- 6 View devices connected to your guest network
- 7 View devices connected to your primary wireless network
- 8 View Access Points in your network
- 9 Read FAQs
- 10 Register new Access Points
- 11 Authorize a new device to connect to your wireless network
- 12 Monitor alerts in real time









## Technical Support

---

D-Link's website contains the latest user documentation and software updates for D-Link products.

U.S. and Canadian customers can contact D-Link Technical Support through our website or by phone.

### **United States**

Telephone  
877.354.6555

### **World Wide Web**

<http://support.dlink.com>

### **Canada**

Telephone  
877.354.6560

### **World Wide Web**

<http://support.dlink.ca>

# **D-Link<sup>®</sup>**

Version 1.0  
June 13, 2011

Copyright ©2011 D-Link Corporation/D-Link Systems, Inc. All rights reserved. D-Link and the D-Link logo are registered trademarks of D-Link Corporation or its subsidiaries in the United States and other countries. CloudCommand™ is a trademark of PowerCloud™ Systems, Inc. All rights reserved. Other trademarks are the property of their respective owners. Product specifications, size and shape are subject to change without notice, and actual product appearance may differ from that depicted herein.

## Free Manuals Download Website

<http://myh66.com>

<http://usermanuals.us>

<http://www.somanuals.com>

<http://www.4manuals.cc>

<http://www.manual-lib.com>

<http://www.404manual.com>

<http://www.luxmanual.com>

<http://aubethermostatmanual.com>

Golf course search by state

<http://golfingnear.com>

Email search by domain

<http://emailbydomain.com>

Auto manuals search

<http://auto.somanuals.com>

TV manuals search

<http://tv.somanuals.com>