

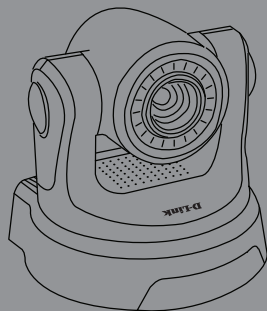


Quick Install Guide

Wireless N /Wired PTZ H.264 Network Camera

This document will guide you through the basic installation process for your new D-Link Network Camera.

DCS-5605/5635



Documentation also available on CD
and via the D-Link Website

DCS-5605/5635 Quick Install Guide

This installation guide provides basic instructions for installing the DCS-5605/5635 Network Camera on your network. For additional information about how to use the camera, please refer to the User Manual which is located on the CD or from the D-Link support website.

Installation Steps

1. Verify the package contents against the list below
2. Hardware Overview
3. Hardware Installation
4. Configuration with the Setup Wizard

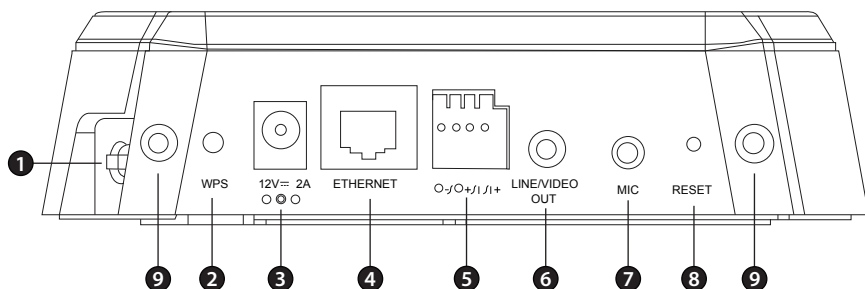
Package Contents

- DCS-5605/5635 Network Camera
- CD-ROM (Software and User Manual)
- CAT5 Ethernet Cable
- Power Adapter
- Two Antennas (DCS-5635 only)
- A/V Cable
- Plate
- Mounting Screws

If any of the above items are missing, please contact your reseller.

Hardware Overview

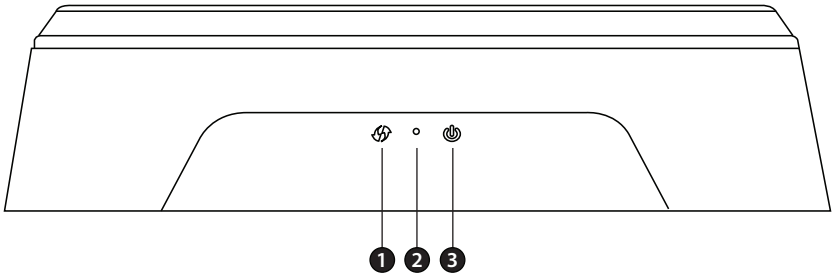
Rear Panel



1	Micro SD Port	Insert a Micro SD memory card to save data from the camera.
2	WPS (DCS-5635 Only)	Press the WPS button to automatically connect to a WPS-enabled wireless router or access point and establish connectivity.
3	Power Receptor	Plug in the supplied power adapter to an outlet.
4	Ethernet Port	Connect an Ethernet cable to a router, switch, or computer. The Ethernet port can also be used to power the camera using a Power over Ethernet (PoE) switch or router (DCS-5605 only).
5	I/O Connector	The camera provides a terminal block with two pairs of connectors situated on the back panel. One pair is for input and the other is for output. The I/O connectors provide the physical interface to send and receive digital signals to a variety of external alarm devices. Please refer to the I/O Connector section in the manual for detailed information.
6	Video/Audio Line-Out Port	Plug the included A/V cable into the A/V out connector to use the camera with a television or VCR, or connect to speakers.
7	External Microphone Port	Insert an external microphone to record audio.
8	Reset Button	Press and hold for 10 seconds to reset the camera back to the default settings.
9	Antennas (DCS-5635 Only)	Locate the antennas included with your DCS-5635, and attach them to the antenna connectors located on the back of DCS-5635.

Hardware Overview

Front Panel

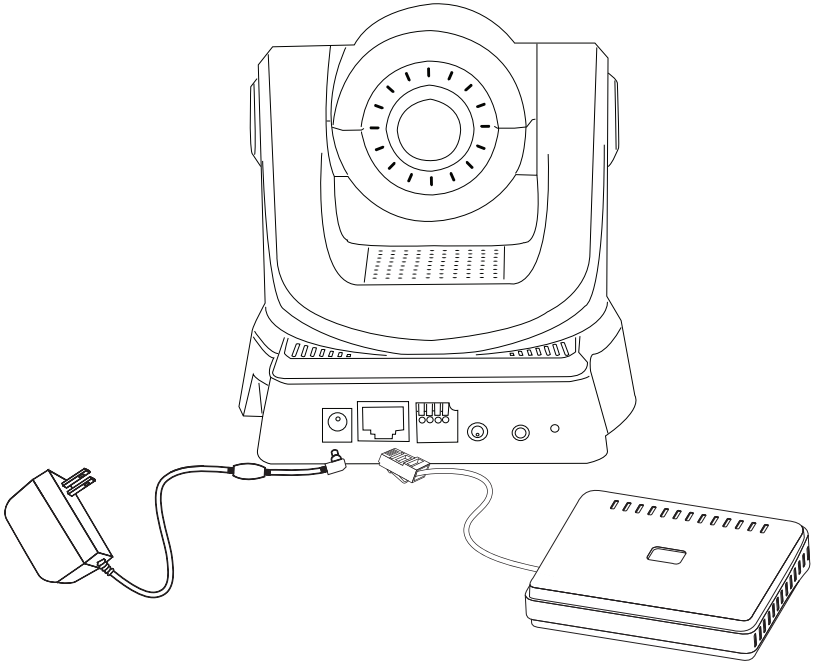


1	WPS/Link LED	The WPS LED will blink blue when initializing a connection, and illuminate with solid blue once the connection has been established (DCS-5635 only). The Link LED will illuminate green once a connection has been established.
2	Microphone	The built-in microphone can be used to capture audio from sources nearby the camera.
3	Power LED	The Power LED will illuminate red when the camera is receiving power.

Hardware Installation

Basic Connection

Connect the camera to your switch or router via Ethernet cable and then connect the supplied power cable from the camera to a power outlet.



Note: Once power has been established, the Power LED will turn red. When the device has obtained an IP address and is accessible, the Link LED will turn green.

Configuration

Insert the DCS-5605/5635 CD into your computer's CD-ROM drive to begin the installation. If the Autorun function on your computer is disabled, or if the D-Link Launcher fails to start automatically, click **Start > Run**. Type **D:\autorun.exe**, where D: represents the drive letter of your CD-ROM drive.

1. Click **Installation Wizard** to begin the installation. Install the Setup Wizard SE and execute the program.



2. The Setup Wizard will appear and display the MAC address and IP address of your camera(s). If you have a DHCP server on your network, a valid IP Address will be displayed. If your network does not use a DHCP server, the camera's default static IP **192.168.0.20** will be displayed.



Click the **Wizard** button to continue.

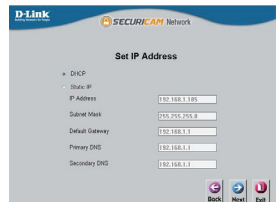
3. Enter the Admin ID and password. When logging in for the first time, the default Admin ID is **admin** with the password left blank.

Click **Next** to proceed to the next page.

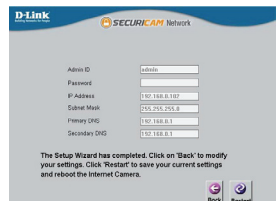


4. Select DHCP if your camera obtains an IP address automatically when it boots up. Select static IP if the camera will use the same IP address each time it is started.

Click **Next** to proceed to the next page.

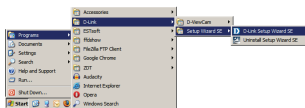


5. Take a moment to confirm your settings and click **Restart** to reboot the camera.

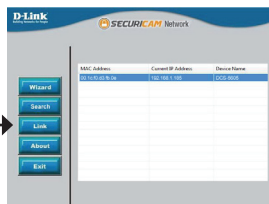


Viewing Camera via Web Browser

1. Click on the **D-Link Setup Wizard SE** icon that was created in your Windows Start menu. Go to **Start > D-Link > Setup Wizard SE**.

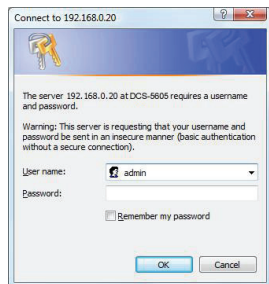


2. Select the camera and click the **Link** button to access the web configuration. The Setup Wizard will automatically open your web browser to the IP address of the camera.



3. Enter **admin** as the default username and leave the password blank.

Click **OK** to continue.



4. This section shows your camera's live video. You can select your video profile and view or operate the camera. For additional information about web configuration, please refer to the user manual included on the CD-ROM or the D-Link website.



Technical Support

D-Link's website contains the latest user documentation and software updates for D-Link products. U.S. and Canadian customers can contact D-Link Technical Support through our website or by phone.

United States

Telephone

(877) 354-6555

World Wide Web

<http://support.dlink.com>

Canada

Telephone

(877) 354-6560

World Wide Web

<http://support.dlink.ca>

D-Link[®]

Version 1.1

October 11, 2010

6DCS5635Q.02G

Copyright ©2010 D-Link Corporation/D-Link Systems, Inc. All rights reserved. D-Link and the D-Link logo are registered trademarks of D-Link Corporation or its subsidiaries in the United States and other countries. Other trademarks are the property of their respective owners. Actual data throughput will vary. Network conditions and environmental factors, including volume of network traffic, building materials and construction, and network overhead lower actual data throughput rate. Product specifications, size and shape are subject to change without notice, and actual product appearance may differ from that depicted on the packaging. Visit www.dlink.com for more details.

Free Manuals Download Website

<http://myh66.com>

<http://usermanuals.us>

<http://www.somanuals.com>

<http://www.4manuals.cc>

<http://www.manual-lib.com>

<http://www.404manual.com>

<http://www.luxmanual.com>

<http://aubethermostatmanual.com>

Golf course search by state

<http://golfingnear.com>

Email search by domain

<http://emailbydomain.com>

Auto manuals search

<http://auto.somanuals.com>

TV manuals search

<http://tv.somanuals.com>