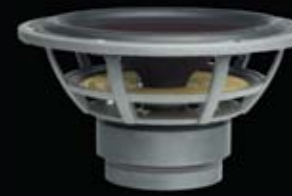


"AN IKON® IS SO MUCH MORE THAN THE SUM OF ITS PARTS"

[HYBRID TWEETER MODULE]

Our proprietary IKON high-frequency module is a direct descendant of our exclusive EUPHONIA and HELICON series. The oversized, yet lightweight soft dome tweeter has exceptional dynamic headroom capabilities. In perfect synergy with our 17x45 mm smooth ribbon tweeter, the module is a match made in audio heaven, delivering high power handling, wide horizontal dispersion, and ultra-detailed high frequency reproduction reaching well beyond the audible range.



[DRIVER]

Custom-made like all DALI drivers, the low-loss IKON drivers feature a massive dual-magnet motor with a highly focused magnetic flux, bonded and bolted onto the rigid, die-cast aluminum basket. The drilled and chamfered pole piece allows air to flow freely under the dust cap, ensuring optimum cooling of the long-throw voice-coil. The stiff, lightweight paper/wood-composite fiber cone has great structural damping, and moves unhindered, thanks to the specially developed low-loss suspension.

[CABINET]

To ensure minimal coloration, two layers of MDF (Medium Density Fiberboard) are bonded with a thick vibration- and resonance-dissipating adhesive. An airtight seal between the woofer/gasket and the rim is achieved by maximizing surface area around the seven screw attachment points, and milling away everything else, in order to allow unhindered airflow. The bracing inside the cabinet is carefully tuned to lower the resonance and further stiffen the rigid cabinet, while preserving unimpeded airflow.



[CROSSOVER]

A shorter signal path is a better signal path. Consequently, we mount our point-to-point hardwired crossover directly to the terminals, minimizing potential signal loss from terminal to crossover. The wood fiberboard absorbs mechanically transferred vibrations, and the bi-plane layout maximizes inductor separation and minimizes electromagnetic interference between the meticulously selected crossover components.



[TERMINAL]

Our IKON terminal features sturdy, gold-plated bi-wiring terminals and includes a heavy power bridge for mono-wiring. It accepts bananas and spades as well as bare cable-ends, and conveniently allows secure tightening by hand.



FEATURES

- Wide Dispersion
- 3D Audio
- Low Resonance Cabinets
- Time Coherence
- Hand Crafted
- Amplifier Optimized

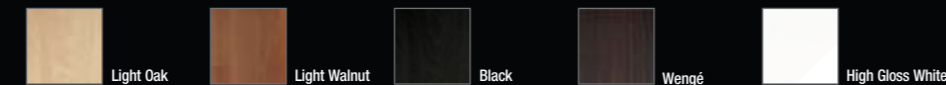
Item No. 953017-4-00

**IKON®
PREPARE TO WANT**



	IKON® [1]	IKON® [2]	IKON® [5]	IKON® [6]	IKON® [7]	IKON® [8]	IKON® [VOKAL 1]	IKON® [VOKAL 2]	IKON® [ON-WALL]	IKON® [SUB]
Frequency range [Hz, +/- 3 dB]	43-30,000	42-30,000	39-30,000	37-30,000	36-30,000	35-30,000	78-26,000	55-30,000	57-30,000	26-200
Sensitivity [dB, 1 W @ 1 m]	87	88	88	91.5	92	91	87.5	89	89.5	-
Nominal impedance [ohm]	8	8	8	6	6	6	8	8	8	30K (L/R), 20K (LFE)
Maximum SPL [dB]	106	108	109	111	112	113	107	110	108	113
Crossover frequencies										
- Low [Hz]	-	-	600	800	600	700	-	-	-	-
- Mid [Hz]	2,900	3,000	2,700	3,200	2,900	3,000	3,000	2,500	2,500	-
- High [Hz]	14,000	14,000	14,000	14,000	14,000	14,000	-	14,000	14,000	-
Bass reflex tuning frequency [Hz]	47	41	37	36	35	28	70	44.5	-	29
Enclosure type	Bass reflex Shelf/Wall	Bass reflex Stand	Bass reflex Floor	Bass reflex Floor	Bass reflex Floor	Bass reflex Floor	Bass reflex Below / above TV screen	Bass reflex Below / above TV screen	Closed Wall	Bass reflex Floor
Placement	[bracket incl.]								[brackets incl.]	
Dome tweeter [mm, diameter]	28	28	28	28	28	28	28	28	28	-
Ribbon [mm, HxW]	45x17	45x17	45x17	45x17	45x17	45x17	45x17	45x17	45x17	-
Driver[s]	1 x 6.5"	2 x 6.5"	2 x 5"	2 x 6.5"	3 x 6.5"	2 x 8" + 1 x 6.5"	2 x 4"	2 x 5"	1 x 6.5"	1x12" [long stroke]
Dimensions [mm, HxWxD]	350x150x260	440x190x300	810x150x260	1000x190x330	1140x200x340	1160x245x393	120x420x210	150x510x260	380x290x190	440x410x450
[inches, HxWxD]	13.8x5.9x10.1	17.3x7.4x11.7	31.9x5.9x10.2	39.4x7.5x13.0	44.9x7.9x13.5	45.7x9.6x15.5	4.5x16.5x8.4	5.9x20.1x10.1	14.9x10.9x7.4	17.4x16.1x17.7
Max. amplifier power output [Watt RMS]	-	-	-	-	-	-	-	-	-	325
Continuous IEC power output [Watt RMS]	-	-	-	-	-	-	-	-	-	250
Connection inputs	Mono-wiring	Bi-wiring	Bi-wiring	Bi-wiring	Bi-wiring	Bi-wiring	Mono-wiring	Bi-wiring	Mono-wiring	RCA unbalanced Volume (gain), Phase Crossover frequency
Controls	-	-	-	-	-	-	-	-	-	-
Weight [kg/lb]	5.2 / 11.5	9.0 / 19.8	11.8 / 26.0	18.6 / 41.0	22.9 / 50.5	33.3 / 73.4	5.6 / 12.4	7.7 / 17.0	7.1 / 15.7	29.0 / 63.9
		*Is not available in High Gloss White			*Is not available in Light Oak and High Gloss White	*Is not available in Light Oak and High Gloss White	*Is not available in Light Oak and High Gloss White	*Is not available in White, Wengé and High Gloss White	*Is also available in White, Wengé and High Gloss White	*Is not available in Wengé and High Gloss White

All technical specifications are subject to change without notification



Designed in Denmark - www.dali.dk · www.dali-usa.com · www.dali-deutschland.de · www.dali-uk.co.uk

IN ADMIRATION OF MUSIC

IKON® /aikon/

- A [An object mediating between man and the ideal]
- B [A symbol having the capacity to excite or objectify a response]



MEGALINE
EUPHONIA
HELICON MK2
MENTOR
• IKON®
CONCEPT
SUBWOOFER



IN ADMIRATION OF MUSIC

IN ADMIRATION OF MUSIC

SUPER NATURAL EXPERIENCE



IKON® [1]
Hybrid tweeter module | 5" driver | Mono-wiring terminal
43-30,000 Hz | H350 x W150 x D260 mm | 5.2 kg

GREATNESS IN A SMALL BOX

Small in size. Big on performance. The forward-firing dual bass reflex ports of the IKON 1 allow for discrete placement on a bookshelf or wall (brackets included) without muffling bass output. This little jewel also has an amazing ability to make itself virtually disappear – leaving just you and the music.



IKON® [2]
Hybrid tweeter module | 6.5" driver | Bi-wiring terminal
42-30,000 Hz | H440 x W190 x D300 mm | 9.0 kg

TAKE A STAND

The modest dimensions of the IKON 2's make them ideal for smaller rooms. Best placed on a good speaker stand, the IKON 2 will show absolutely no compromises in performance, delivering an unprecedented 3D Audio experience. If you are looking for a discrete speaker system, capable of delivering large scale performance, try supplementing a pair of IKON 2's with an IKON Sub.

"The overall picture is composed, well integrated and musical, with big spoonfuls of drive and superb tempo management – "we couldn't help to tap our feet to every piece of music played"

"We're careful not to let Award-winners' glory to reflect on their siblings, but in the case of the IKON 2s we've no need for caution: these standmounters are every bit as capable as their bigger brother"

WHAT HI-FI



MEGALINE
EUPHONIA
HELICON MK2
MENTOR
• IKON®
CONCEPT
SUBWOOFER



IKON® [6]
Hybrid tweeter module | 2 x 6.5" driver | Bi-wiring terminal
37-30,000 Hz | H1000 x W190 x D330 mm | 18.6 kg

SUPER NATURAL WINNER

"DALI IKON 6s are a prime example of just how good well designed large-cabinet speakers can sound."

"We've yet to come across a rival that can match the IKON 6's combination of full bodied midrange, treble sparkle and crisp timing."

WHAT HI-FI

"Conclusion: A loudspeaker of exceptional resolve for the money, the IKON 6 will show what has been recorded in exquisite detail and with pin-sharp precision."

Alvin Gold | HI-FI CHOICE



IKON® [5]
Hybrid tweeter module | 2 x 5" driver | Bi-wiring terminal
39-30,000 Hz | H810 x W150 x D260 mm | 11.8 kg

LOVE ME SLENDER

Our hybrid tweeter module in combination with our lightning-fast dual 5" drivers gives the ultra-quick IKON 5 full-range sonic capabilities from a very tiny footprint. Their undiluted clarity and stunning ability to make themselves disappear entirely from the soundstage frees the music to flow into the room like liquid air.



IKON® [VOKAL 1]
28 mm soft dome tweeter | 2 x 4" driver | Mono-wiring terminal
78-26,000 Hz | H120 x W420 x D210 mm | 5.6 kg

SLIM, BUT NOT SHADY

To truly bring movies to life in your home, you need a "voice" as powerful and articulate as VOKAL 1. The Vokal 1 center channel is designed to fit the VCR-space under your television. The small and elegant Vokal 1 has been carefully timbre-matched to the sonic properties of the rest of the IKON range.

[REFLEX PORT]

The primary task of the bass reflex port is to supplement the bass driver, enabling the entire low frequency system to deliver flawless and stressless bass reproduction. To ensure a tight fit, the port is screwed to the baffle in the same way as the drivers. The port is also equipped with a rear gasket, in order to prevent unwanted air leakage and port turbulence.



IKON® [7]
Hybrid tweeter module | 3 x 6.5" driver | Bi-wiring terminal
36-30,000 Hz | H1140 x W200 x D340 mm | 22.9 kg

IF SIZE MATTERS

The astonishing power handling and extended bass response of the triple 6.5" equipped IKON 7's make them the best solution for larger rooms, where full-range reproduction of all music types at higher sound pressure levels is in demand. No matter how much you are willing to spend, it doesn't get much better than this.

"One could say this IKON 7 offers a very healthy proportion of the (DALI HELICORN) 400's performance at a very much lower cost."

"...from a value for money perspective, the IKON 7 is an obvious front-runner."

Hi-Fi Choice



IKON® [VOKAL 2]
Hybrid tweeter module | 2 x 5" driver | Bi-wiring terminal
55-30,000 Hz | H150 x W510 x D260 mm | 7.7 kg

CENTER OF ATTENTION

Using the exact same drivers as the IKON 5, VOKAL 2 is capable of tremendous dynamic contrast, extended power delivery and lightning-fast bass performance. It is a great companion to all the IKON speakers, and an ideal match for the larger speakers in the range.



IKON® [8]
Hybrid tweeter module | 1 x 6½" midrange | 2 x 8" woofers
Bi-wiring terminal | 35 - 30,000 Hz | H1160 x W245 x D393 mm
33.3 kg

TOP MODEL

Essentially, IKON 8 is a three-way bass reflex speaker with 2 x 8" bass drivers, a 6.5" midrange driver and DALI's proprietary ribbon/soft dome hybrid tweeter module.

The astonishing power handling and extended bass response of the two 8" woofers make them the best solution for larger rooms, where full-range reproduction of all music types at higher sound pressure levels is in demand. IKON 8 will deliver punch and depth like nothing else - without losing tonality and clarity in the mid and high frequencies.

IKON® [ON-WALL]
Hybrid tweeter module | 6.5" driver | Mono-wiring terminal
57-30,000 Hz | H380 x W280 x D190 mm | 7.1 kg

IF WALLS HAD EARS

Drop yourself straight into the middle of the action with a pair of IKON ON-WALL speakers acting as surround channels in a full-blown IKON multi-channel system. Equipped with drivers identical to those found in IKON 2, ON-WALL will perform brilliantly as stand-alone speakers in a wall-hung stereo configuration as well. Wall brackets are included.



[DECOUPLING]

Die-cast aluminum feet allow for the mounting of black chrome steel spikes or soft, vibration-absorbing feet. Both types are included. Mounting tools too...

*"MEASUREMENTS DO NOT LIE,
NOR DO THEY TELL THE TRUTH.
TO TRULY SEE, YOU NEED TO LISTEN"*



IKON® [SUB]
12" long stroke | 250 W amplifier | RCA unbalanced inputs
26-200 Hz | H440 x W410 x D450 mm | 29.0 kg

MAKE YOUR HEART GO BOOM

Time to bring out the big guns? If a stereo or home-cinema system of truly heroic proportions is your style, IKON SUB will deliver the substance. The built-in 250 W power amplifier, fully adjustable gain, crossover frequency and phase controls make tuning your multi-channel setup a stroll in the park – or a walk across a full-scale battlefield, depending on your sonic preferences.



Free Manuals Download Website

<http://myh66.com>

<http://usermanuals.us>

<http://www.somanuals.com>

<http://www.4manuals.cc>

<http://www.manual-lib.com>

<http://www.404manual.com>

<http://www.luxmanual.com>

<http://aubethermostatmanual.com>

Golf course search by state

<http://golfingnear.com>

Email search by domain

<http://emailbydomain.com>

Auto manuals search

<http://auto.somanuals.com>

TV manuals search

<http://tv.somanuals.com>