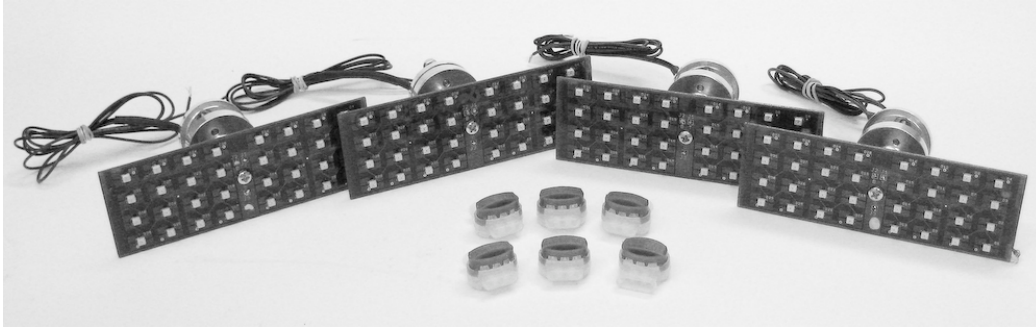
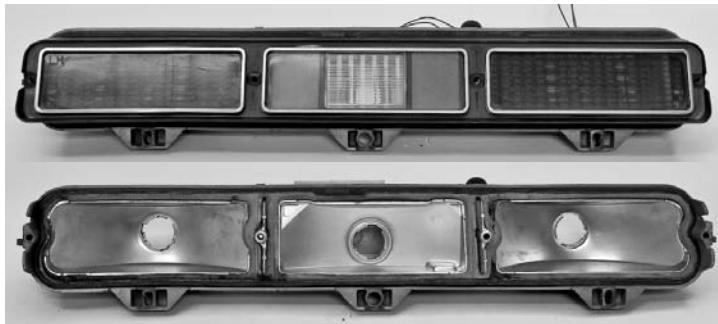


Kit Includes:

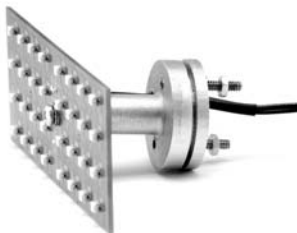


Installation:

1. Remove the tail light housing from the vehicle.
2. Remove the tail light lens.
3. Remove the light bulb.
4. Remove the original bulb connector from the back side of the housing.



5. Now is a good time to clean the lens and housing. If lenses are in bad shape a new set is recommended.
6. Remove the nuts and back plate from the back of the new LED assembly.



7. Insert the new LED assembly into the hole where the original bulb and connector were located. Use caution when feeding the wires through the socket opening to avoid damaging the wire insulation.



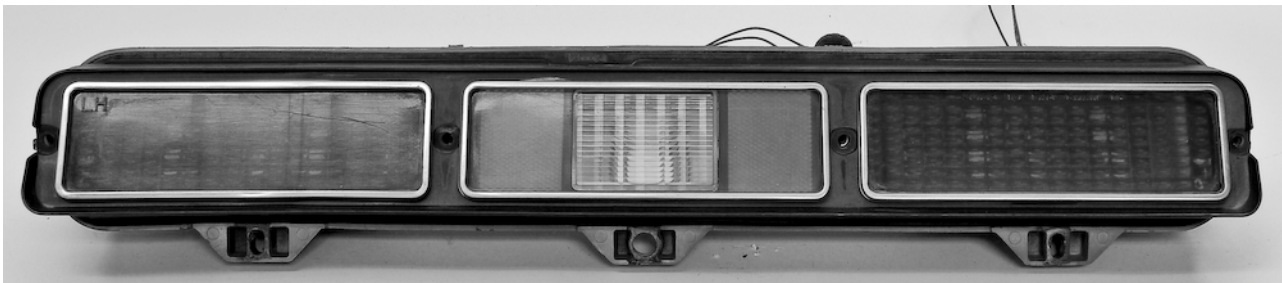
8. Feed the wires through the large hole in the back plate. Guide the back plate onto the back side of the housing. The flat side of the mounting disk should be toward the outside and the side with the slight raised center should go in towards the housing. This will align the mount in the original housing.



9. Secure the back plate with the supplied #6 nuts.



10. Install the lens and reassemble the housing, insuring all gaskets are intact and in place.

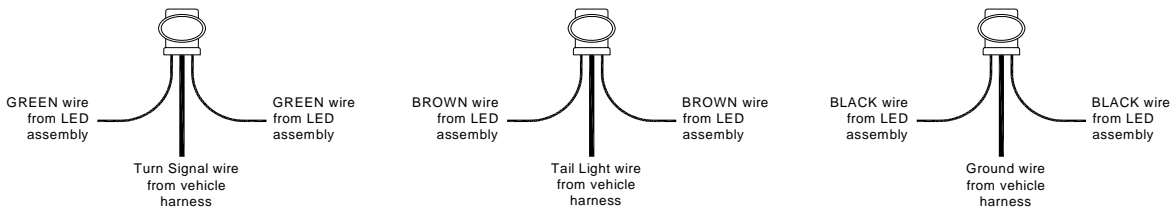


11. Cut off the existing light socket as it will not be used. Do not strip the wires. Trim the wires from LED assembly to appropriate length once mounted, making sure wires are routed cleanly and securely.
12. Use the supplied moisture resistant pigtail connectors* to attach the wires from the new LED assembly to the existing vehicle harness. Insert appropriate wire from vehicle harness and mating LED assembly wire into a connector and crimp following instructions below.

*For the best connection, soldering is recommended. But to simplify installation, the supplied connectors will provide a fast weather resistant connection.

The correct crimp method for the supplied connectors is:

- 1.) Insert **UNSTRIPPED** wires into the connector and ensure they are all they way in by observing the clear bottom of the connector to see the wires are touching the end.
- 2.) Use pliers to push the blue cap down flush with the edge of the clear body, completing the connection. The connection will only be correct if pressed firmly down with pliers.



	LED wires	Vehicle harness
Tail light	Brown	Brown or Black
Driver's Turn	Green	Green or Pink
Passenger's Turn	Green	Yellow or Purple
Ground	Black	Chassis or body

13. Repeat for the other side.
14. Test the tail lights, brake lights, and turn signals. If the turn signals do not flash you will need to upgrade your flasher. If you are replacing only the rear turn signals you should be able to use a heavy duty electronic flasher from your local parts store. If you are replacing both front and rear or do not have front bulbs you will need a no-load flasher, Dakota Digital part number LAT-NLF.

SERVICE AND REPAIR

DAKOTA DIGITAL offers complete service and repair of its product line. In addition, technical consultation is available to help you work through any questions or problems you may be having installing one of our units. Should you ever need to send the unit back for repairs, please package the product in a good quality box along with plenty of packing material. Ship the product by UPS or insured Parcel Post. Be sure to include a complete description of the problem, your full name and address (street address preferred), and a telephone number where you can be reached during the day. An authorization number for products being returned for repair is needed. We will contact you if any repair charges exist. Any returns for warranty work must include a copy of the dated invoice or bill of sale.

LED LIGHTING LIMITED LIFETIME WARRANTY

DAKOTA DIGITAL (the Company) warrants to the ORIGINAL PURCHASER of this LED Lighting product under normal use and condition, be proven defective in material or workmanship DURING THE LIFETIME OF THE CAR IN WHICH IT WAS ORIGINALLY INSTALLED, such defect(s) will be repaired or replaced (at the Company's option) without charge for parts or labor directly related to repairs of the defect(s).

To obtain repair or replacement within the terms of this Warranty, the product is to be delivered with proof of warranty coverage (e.g. dated bill of sale), specification of defects, transportation prepaid, to the factory. This Warranty is valid for the original purchaser only and may not be transferred.

This warranty does not cover damage to vehicle electrical system. This Warranty does not apply to any product or part thereof which in the opinion of the Company has been damaged through alteration, improper installation, mishandling, misuse, neglect, or accident.

This Warranty is in lieu of all other express warranties or liabilities. ANY IMPLIED WARRANTIES, INCLUDING ANY IMPLIED WARRANTY OF MERCHANTABILITY, SHALL BE LIMITED TO THE DURATION OF THIS WRITTEN WARRANTY. ANY ACTION FOR BREACH OF ANY WARRANTY HEREUNDER INCLUDING ANY IMPLIED WARRANTY OF MERCHANTABILITY MUST BE BROUGHT WITHIN A PERIOD OF 30 MONTHS FROM DATE OF ORIGINAL PURCHASE. IN NO CASE SHALL THE COMPANY BE LIABLE FOR ANY CONSEQUENTIAL OR INCIDENTAL DAMAGES FOR BREACH OF THIS OR ANY OTHER WARRANTY, EXPRESSED OR IMPLIED, WHATSOEVER. No person or representative is authorized to assume for the Company any liability other than that expressed herein in connection with the sale of this product.

FOR SERVICE SEND TO: DAKOTA DIGITAL, 4510 W. 61st ST N., SIOUX FALLS, SD 57107 USA (800) 852-3228
 Email us at techsupport@dakotadigital.com

Free Manuals Download Website

<http://myh66.com>

<http://usermanuals.us>

<http://www.somanuals.com>

<http://www.4manuals.cc>

<http://www.manual-lib.com>

<http://www.404manual.com>

<http://www.luxmanual.com>

<http://aubethermostatmanual.com>

Golf course search by state

<http://golfingnear.com>

Email search by domain

<http://emailbydomain.com>

Auto manuals search

<http://auto.somanuals.com>

TV manuals search

<http://tv.somanuals.com>