

## Compact Hand-Held Mobile Computer

### HIGHLIGHTS

• **ERGONOMIC AND RELIABLE**  
The Datalogic Skorpio™ is a rugged mobile computer particularly suitable for mobile commerce solutions in the retail environment both on store shelves and in the stock room. Thanks to one of the best ergonomics ever seen on the market, Datalogic Skorpio™ reduces operator fatigue with no compromise in terms of reliability and robustness, resisting harsh environments, multiple drops, strong shocks and repetitive tumbles.

• **WIRELESS COMMUNICATION**  
Its wireless communication capabilities (Bluetooth®, Wi-Fi® certified 802.11b/g) enable fast transactions and complete interaction with information systems including the newest RF security protocols such as WPA™ and WPA2™. Moreover, Cisco Compatible Extensions CCX V4 certification, permits all the advantages offered by the Cisco WLAN infrastructure to be exploited.

• **“GREEN SPOT” FEEDBACK**  
The Datalogic Skorpio™ offers the unique feature of integrated data capture technology combined with “green spot” feedback (Datalogic patent), providing a “good read” green dot directly on the code, where the operator usually tends to be looking.

• **USER-FRIENDLY**  
The Datalogic Skorpio™ large high visibility color graphic display with touch screen helps users work more efficiently, while the practical 38-key “alpha & numeric” keypad allows data, codes and descriptions to be input very quickly.



### FEATURES

- High performance laser with Datalogic “Green spot” (patented)
- Compact, lightweight and robust
- Microsoft Windows CE 5.0 operating system
- Bluetooth® and 802.11 b/g CCX V4 certified communication options
- 1.5 m (5 ft) drop resistance
- IP64 protection class
- Large high visibility color graphic display with touch screen

### APPLICATIONS

- Inventory
- Shelf replenishment
- Price management
- Order entry
- Assisted sales
- Line busting

## Specifications

### PHYSICAL CHARACTERISTICS

DIMENSIONS	196 x 77 x 33 mm (7.7 x 3.0 x 1.3 in) min.
WEIGHT	310 - 360 g (10.9 - 12.7 oz) incl. battery
DISPLAY	Reflective TFT daylight readable color display, 240 x 320 pixels, 71 mm (2.8 in) diagonal, 65 K colors, backlight, touch screen
KEYBOARD	38 rubber keys
OPERATING TEMPERATURE	-10 ° to +50 °C (14 ° to 122 °F)
STORAGE TEMPERATURE	-20 °C +70 °C (-4 ° to 158 °F)
DROP RESISTANCE	Withstands drops from 1.5 m (5 ft) onto concrete
ENVIRONMENTAL SEALING	IP64 standard for water and dust resistance

### SYSTEM

OPERATING SYSTEM	Microsoft Windows CE 5.0 Core/Professional
MICROPROCESSOR	Intel® XScale PXA270 @ 312/520 MHz
SYSTEM RAM MEMORY	128 MB
SYSTEM FLASH MEMORY	128 MB (including Backup directory for user data & programs permanent storage)
EXPANSION SLOTS	Mini Secure Digital and Compact Flash slots
POWER SUPPLY	Removable battery pack with rechargeable Li-Ion batteries; 3.7 V 2,100 mAh (7.8 Watt-hours); Local connection for fast battery charging

### COMMUNICATIONS

INTERFACES	Electrical: 3-pin RS232 up to 115.2 Kbps via Transceiver/Charger USB: high speed USB (USB 1.1) via Transceiver/Charger or through Mini USB connector
LOCAL AREA NETWORK (WLAN)	IEEE 802.11b/g CCX V4 certified Frequency range: Country dependent, typically 2.4 - 2.5 GHz Integrated module
PERSONAL AREA NETWORK (PAN)	IEEE 802.15 Bluetooth® (optional) Integrated module

### READING OPTIONS

<b>LASER CHARACTERISTICS</b>	
SCANNING RATE	104 ± 12 scan/sec
MINIMUM RESOLUTION	0.10 mm (4 mils)
DEPTH OF FIELD	5 to 90 cm (2 to 35 in), depending on bar code density
BAR CODES	EAN/UPC, Code 39, 2/5 Codes, Plessey, Codabar, Code 128, EAN128, MSI, Code 93, Code 11
LASER CLASSIFICATION	VLD - Class II EN 60825-1/CDHR

### SOFTWARE

<b>DEVELOPMENT</b>	<b>CONFIGURATION &amp; MAINTENANCE</b>
Windows CE SDK™	Wavelink® Avalanche™
DL Mobility Developer Assistant™	Datalogic Firmware Utility
MCL-Collection™	Datalogic Desktop Utility
	Datalogic Configuration Utility
<b>EMULATION TERMINAL</b>	<b>UTILITAIRES</b>
Wavelink® Terminal Emulation	Wavelink® Remote Control
	Wavelink® TermProxy

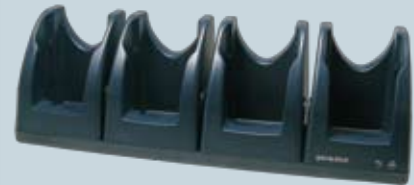


Caution: Laser Radiation - do not stare into beam

Please refer to user manual available at [www.mobile.datalogic.com/manuals](http://www.mobile.datalogic.com/manuals) for information on product use limitation.

For more information and software downloads see: [www.mobile.datalogic.com/skorpio](http://www.mobile.datalogic.com/skorpio)

## Accessories



Single and Multiple Cradles



Multiple Battery Charger



Functional Case

## Free Manuals Download Website

<http://myh66.com>

<http://usermanuals.us>

<http://www.somanuals.com>

<http://www.4manuals.cc>

<http://www.manual-lib.com>

<http://www.404manual.com>

<http://www.luxmanual.com>

<http://aubethermostatmanual.com>

Golf course search by state

<http://golfingnear.com>

Email search by domain

<http://emailbydomain.com>

Auto manuals search

<http://auto.somanuals.com>

TV manuals search

<http://tv.somanuals.com>