

F725-E F725-E/RF

Professional Pistol Grip Terminal



Mobile Computers

General Description

To improve the efficiency of many crucial activities in your company, such as goods shipping/receiving, inventory and picking, the right choice is to select the Formula 725-E, a lightweight, compact-sized and fully programmable hand-held laser terminal available both in batch and wireless configuration.

The F725-E batch version offers typical features and functions of high-end products, such as the "overspeed" capability to boost software performance, big RAM memory (2MB) for managing large databases and 512 KB Flash memory to store application programs of large dimensions.

The F725-E long-range model can read bar codes located in difficult-to-reach places, even up to 1.5m away, while the reading capacity of the standard model is the best you can desire with the high performance and high visibility laser engine.

The wide backlit LCD display, with 4 lines and 16 characters, clearly shows much information while the practical 20-key alphanumeric keyboard allows data to be input very quickly, especially in case the code is unreadable because it is damaged, badly printed or not present at all.

By using the optional EasyGen™ Application Generator or the DS for Formula™ software packages, developers can easily customize applications according to the end user specific needs, while F725-E/RF operators can take advantage of the new STAR & Play™ pre-loaded software utility to be immediately operative on the field.

The F725-E/RF terminal is 100% compatible with Datalogic STAR-System™, the RF narrow band solution for mobile applications. The high capacity Ni-MH long life batteries and the Protecting/Functional case make the F725-E/RF the ideal solution for many applications in warehousing/back office environments as well as for intensive use in industrial areas.

If you want to maximise the success of a profitable data capture project and speed up the return on investment, the Formula 725-E is the solution you are looking for!

Features

- > Extremely compact and sturdy
- > Very light weight (240 g)
- > Large data / program memory capacity and "Overspeed" capability
- > High Performance and Long Range models
- > 100% compatible with STAR-System™
- > Conformance with the European ETSI standard EN 300 220-3
- > Excellent price/performance ratio

Applications

- > Goods shipping/receiving
- > Inventory
- > Picking
- > Warehouse management
- > Shop Floor
- > Shelf replenishment and price verification

Specifications

PHYSICAL CHARACTERISTICS

DIMENSIONS	110 x 56 x 147 mm (4.3 x 2.2 x 5.8 in)
WEIGHT	Batch models: 240 g (8.5 oz) RF models: 255 g (9.01 oz)
DISPLAY	Graphic high-contrast LCD with backlight
SCREEN FORMAT	4 lines x 16 characters
OPERATING TEMP.	0 to 50 °C (32 to 122 °F)
STORAGE TEMP.	-20 to +70 °C (-4 to +158 °F)
RELATIVE HUMIDITY	95% without condensation
DROP RESISTANCE	Resists several drops onto concrete
ENVIRONMENTAL PROTECTION	Industrial, protected against dust and water

PERFORMANCE

OPERATIVE SYSTEM	Datalogic proprietary
PROCESSOR	8 bit CMOS
PROGRAMME MEMORY	512 KB Flash dedicated to the application program
DATA MEMORY	Batch models: 2048 KB RAM for data RF models: 512 KB RAM for data
KEYBOARD	Alphanumeric with 20 silicon rubber keys
SIGNAL TO OPERATOR	Bicolour LED; Piezoelectric buzzer; programmable frequency and duration
CLOCK/CALENDAR	Quartz controlled RTC; programmable date and time

RF COMMUNICATION

RADIO FREQUENCY	433.92 MHz
RADIO POWER OUTPUT	< 10 mW
RADIO RANGE*	50 m (164 ft)
DATA TRANSFER RATE	Up to 19,200 baud
CONFORMITY	European ETSI standard EN 300 220-3

SERIAL COMMUNICATION

DATA TRANSFER	Infrared (via optocoupler) between F725-E and F925 or F925/4 RS232 or RS485 between F925 or F925/4 and PC or Host Transmission speed: Up to 115 Kbit/sec
---------------	--

POWER MANAGEMENT

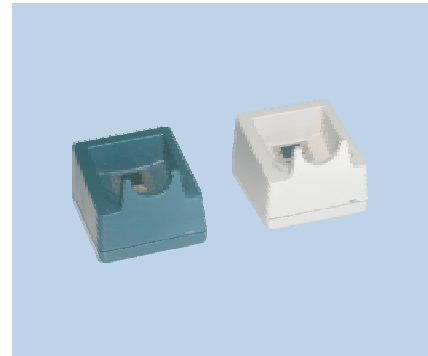
POWER SOURCE	Batch models: 250 mA/h Ni-CD rechargeable batteries RF models: 600 mA/h Ni-MH rechargeable batteries
AUTONOMY	24 h, with reading every 45"
BATTERY CHARGING	Via Formula 925 single slot Transceiver/Charger or Formula 925/4 multiple slot Transceiver/Charger

SCANNER AND BARCODE CHARACTERISTICS

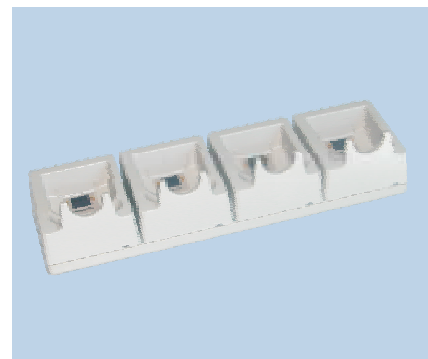
SCANNING RATE	35 ± 5 scans/sec
MINIMUM RESOLUTION	0.15 mm (6 mils)
DEPTH OF FIELD	Standard models: 3 to 70 cm (1.2 to 27.6 in) Long range models: 10 to 150 cm (3.9 to 59.1 in) (depending on bar code thickness)
SCAN ANGLE	42° ± 2
BAR CODES	EAN 8, EAN 13, UPC/A-E, 2/5 family, Code 128, Code 93, Code 2/7, Code 3/5, 3/9 family, MSI, DELTA A IBM
LASER CLASSIFICATION	VLD - Class II

*Radio range depends on environmental characteristics

Accessories



Single cradles



4 slot transceiver/charger



Functional Case



Product and Company names and logos referenced may be either trademarks or registered trademarks of their respective companies. We reserve the right to make modifications and improvements.



Free Manuals Download Website

<http://myh66.com>

<http://usermanuals.us>

<http://www.somanuals.com>

<http://www.4manuals.cc>

<http://www.manual-lib.com>

<http://www.404manual.com>

<http://www.luxmanual.com>

<http://aubethermostatmanual.com>

Golf course search by state

<http://golfingnear.com>

Email search by domain

<http://emailbydomain.com>

Auto manuals search

<http://auto.somanuals.com>

TV manuals search

<http://tv.somanuals.com>