

*Definitive Technology*<sup>®</sup>  
*The Leader in High-Performance Loudspeakers*<sup>®</sup>

Thank you for choosing the Definitive Technology CS Series Center Loudspeaker. The CS Series is a compact high-definition loudspeaker system. Because of its wide range, high-power handling and articulate clarity, it is ideal for use as a center channel in a high-performing home theater system.

Our engineers have spent many years in developing this product. In order to ensure that you experience the finest performance possible, we encourage you to take a moment to fully read this owner's manual and familiarize yourself with the proper installation and setup procedures for your CS speaker.

**[www.DefinitiveTech.com](http://www.DefinitiveTech.com)**

## Unpacking Your CS8040HD

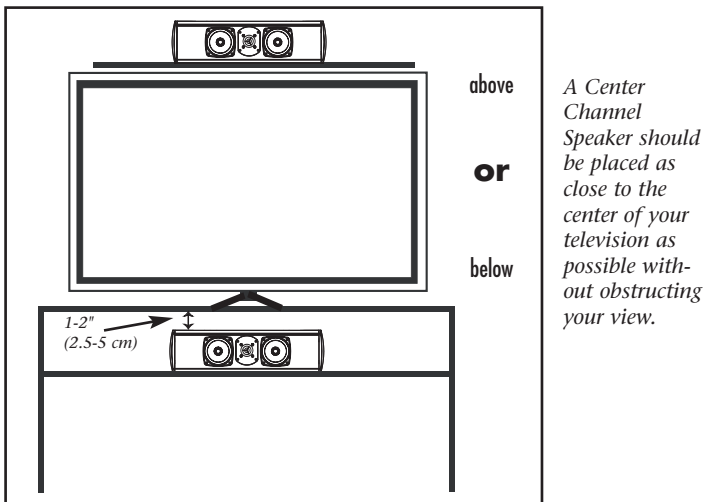
### Please Inspect For Shipping Damage

Each loudspeaker leaves our plant in perfect condition. Any visible or concealed damage most likely occurred in handling after it left our plant and should be reported at once to your Definitive dealer or the delivery company that delivered your loudspeaker. Please unpack your system carefully. Save all cartons and packing materials in case you move or need to ship your system. Record the serial number found on the back of the Center Channel in the Notes section of this owner's manual.

## Positioning Your Speakers

Your new CS Series speaker is designed to add clarity and focus to the vocal range and extend the musical image of your home theater. To optimize its performance, please follow these simple guidelines. Although the following recommendations will usually yield the best results, whatever sounds best to you is correct.

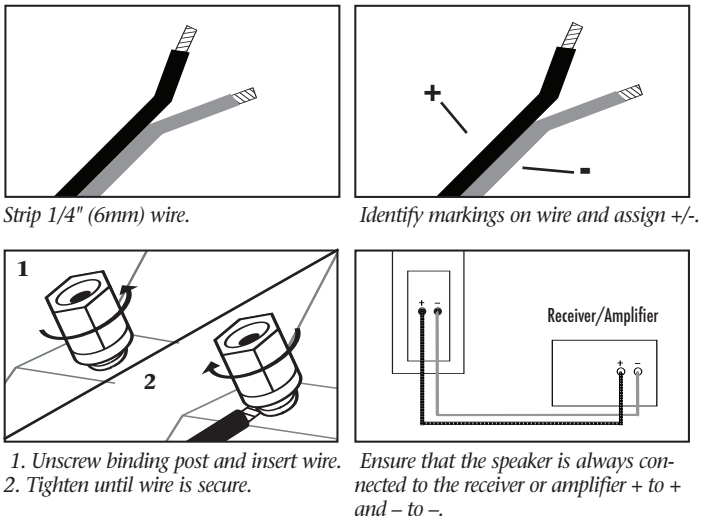
**Figure 1 – Positioning CS Series Center Channel**



To receive the full benefit of the bass radiators built into your CS Speaker leave at least 1-2" (2.5-5 cm) of space between the top of the speaker and any surface.

## Connecting Your Loudspeakers

**Figure 2 – Wiring and Polarity**

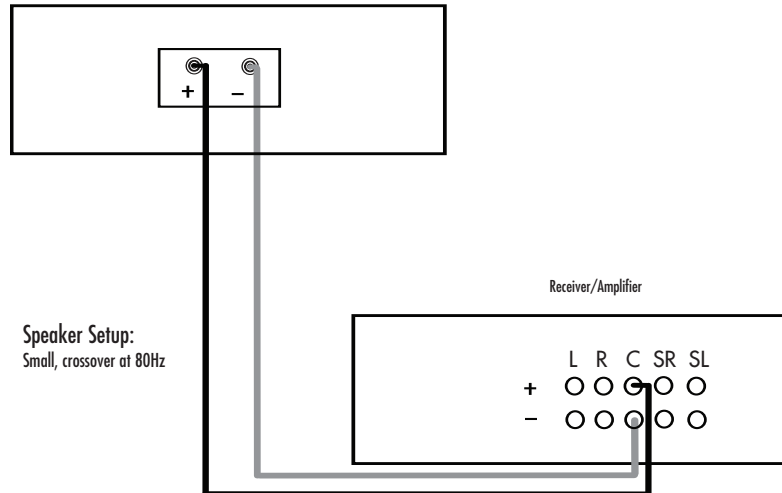


1. Unscrew binding post and insert wire.  
2. Tighten until wire is secure.

Ensure that the speaker is always connected to the receiver or amplifier + to + and - to -.

Use the manual speaker setup functions in your receiver to set speaker configuration, speaker distance and channel balance. Consult your receiver's or processor's manual to learn how to access and use the setup menus. Set center speaker to "small" with the crossover point set at 80Hz.

**Figure 3 – Connecting Speaker to Amplifier**



All Dolby/DTS multi-channel receiver/amplifiers feature a dedicated channel for a center speaker. Consult your receiver's owner's manual for the appropriate connection procedure.

## Troubleshooting

If you experience any difficulties with your CS Series Speaker, try the suggestions below. If you still have problems, contact your Definitive Technology Authorized Dealer for assistance.

1. **Audible distortion** when the speakers are playing at loud levels is caused by driving (turning up) your receiver or amplifier louder than the receiver or the speakers are capable of playing. Most receivers and amplifiers put out their full-rated power well before the volume control is turned all the way up, so the position of the volume control is a poor indicator of its power limit. If your speakers distort when you play them loud, turn the volume down!
2. If you experience a **lack of bass**, it is likely that one speaker is out of phase (polarity) with the other speakers in the system and needs to be rewired paying closer attention to connect positive to positive; negative to negative on both channels. Most speaker wire has some indicator (such as color-coding, ribbing or writing) on one of the two conductors to help you maintain consistency. It is essential to connect both speakers to the amplifier in the same way (in phase).
3. Make sure all your system interconnects and power cords are solidly connected.
4. Check that no foreign objects or liquid has entered the speaker cabinet.

## Technical Assistance

It is our pleasure to offer assistance if you have any questions regarding your Center Channel or its setup, please contact your nearest Definitive Technology dealer or call us directly at (800) 228-7148 (US & Canada), 01 (410) 363-7148 (all other countries) or e-mail info@definitivetech.com. **Technical support is offered in English only.**

### Definitive Technology Offices

11433 Cronridge Drive, Owings Mills, Maryland 21117  
 Phone: (800) 228-7148 (US & Canada),  
 01 (410) 363-7148 (all other countries)

## Service

Service and warranty work on your Definitive loudspeakers will normally be performed by your local Definitive Technology dealer. If, however, you wish to return the speaker to us, please contact us first, describing the problem and requesting authorization as well as the location of the nearest factory service center. **Please note that the address given in this booklet is the address of our offices only. Under no circumstances should loudspeakers be shipped to our offices or returned without contacting us first and obtaining return authorization.**

	<b>CS8040HD</b>
<i>Performance Specifications</i>	
Overall Frequency Response	40Hz - 30kHz
Sensitivity	92
Nominal Impedance	8 Ohms
Recommended Associated Amplifier Power	20-200w
Built-In Subwoofer Amplifier Power	n/a
<i>Dimensions</i>	
Height	6-1/16" (15.4 cm)
Width	21-1/8" (53.86 cm)
Depth	12" (30.4 cm)
<i>Speaker Complement</i>	
Bass Radiator Quantity	1
Bass Radiator Dimensions	5"x10" (12.7x 25.4 cm)
Midrange Driver Quantity	2
Midrange Diameter	4 1/2" (11.43 cm)
Tweeter Quantity	1
Tweeter Diameter	1" (2.54 cm)

## Notes

## Limited Warranty: 5-Years for Drivers and Cabinets, 3-Years for Electronic Components

DEI Sales Co., dba Definitive Technology (herein "Definitive") warrants to the original retail purchaser only that this Definitive loudspeaker product (the "Product") will be free from defects in material and workmanship for a period of five (5) years covering the drivers and cabinets, and three (3) years for the electronic components from the date of the original purchase from a Definitive Authorized Dealer. If the Product is defective in material or workmanship, Definitive or its Authorized Dealer will, at its option, repair or replace the warranted product at no additional charge, except as set forth below. All replaced parts and Product(s) become the property of Definitive. Product that is repaired or replaced under this warranty will be returned to you, within a reasonable time, freight collect. This warranty is non-transferrable and is automatically void if the original purchaser sells or otherwise transfers the Product to any other party.

*This Warranty does not include service or parts to repair damage caused by accident, misuse, abuse, negligence, inadequate packing or shipping procedures, commercial use, voltage in excess of the rated maximum of the unit, cosmetic appearance of cabinetry not directly attributable to defects in material or workmanship. This warranty does not cover the elimination of externally generated static or noise, or the correction of antenna problems or weak reception. This warranty does not cover labor costs or damage to the Product caused by installation or removal of the Product. Definitive Technology makes no warranty with respect to its products purchased from dealers or outlets other than Definitive Technology Authorized Dealer:*

**THE WARRANTY IS AUTOMATICALLY VOID IF:**

- 1) The product has been damaged, altered in any way, mishandled during transportation, or tampered with.
- 2) The product is damaged due to accident, fire, flood, unreasonable use, misuse, abuse, customer applied cleaners, failure to observe manufacturers warnings, neglect or related events.
- 3) Repair or modification of the Product has not been made or authorized by Definitive Technology.
- 4) The product has been improperly installed or used.

Product must be returned (insured and prepaid), together with the original dated proof of purchase to the Authorized

Dealer from whom the Product was purchased, or to the nearest Definitive factory service center. Product must be shipped in the original shipping container or its equivalent. Definitive is not responsible or liable for loss or damage to Product in transit.

THIS LIMITED WARRANTY IS THE ONLY EXPRESS WARRANTY THAT APPLIES TO YOUR PRODUCT. DEFINITIVE NEITHER ASSUMES NOR AUTHORIZES ANY PERSON OR ENTITY TO ASSUME FOR IT ANY OTHER OBLIGATION OR LIABILITY IN CONNECTION WITH YOUR PRODUCT OR THIS WARRANTY. ALL OTHER WARRANTIES, INCLUDING BUT NOT LIMITED TO EXPRESS, IMPLIED, WARRANTY OF MERCHANTABILITY OR FITNESS FOR A PARTICULAR PURPOSE, ARE EXPRESSLY EXCLUDED AND DISCLAIMED TO THE MAXIMUM EXTENT ALLOWED BY LAW. ALL IMPLIED WARRANTIES ON PRODUCT ARE LIMITED TO THE DURATION OF THIS EXPRESSED WARRANTY. DEFINITIVE HAS NO LIABILITY FOR ACTS OF THIRD PARTIES. DEFINITIVE'S LIABILITY, WHETHER BASED ON CONTRACT, TORT, STRICT LIABILITY, OR ANY OTHER THEORY, SHALL NOT EXCEED THE PURCHASE PRICE OF THE PRODUCT FOR WHICH A CLAIM HAS BEEN MADE. UNDER NO CIRCUMSTANCE WILL DEFINITIVE BEAR ANY LIABILITY FOR INCIDENTAL, CONSEQUENTIAL OR SPECIAL DAMAGES. THE CONSUMER AGREES AND CONSENTS THAT ALL DISPUTES BETWEEN THE CONSUMER AND DEFINITIVE SHALL BE RESOLVED IN ACCORDANCE WITH CALIFORNIA LAWS IN SAN DIEGO COUNTY, CALIFORNIA. DEFINITIVE RESERVES THE RIGHT TO MODIFY THIS WARRANTY STATEMENT AT ANY TIME.

Some states do not allow the exclusion or limitation of consequential or incidental damages, or implied warranties, so the above limitations may not apply to you. This warranty gives you specific legal rights, and you may also have other rights which vary from state to state.

©2009 DEI Sales Co.

All rights reserved.



## Free Manuals Download Website

<http://myh66.com>

<http://usermanuals.us>

<http://www.somanuals.com>

<http://www.4manuals.cc>

<http://www.manual-lib.com>

<http://www.404manual.com>

<http://www.luxmanual.com>

<http://aubethermostatmanual.com>

Golf course search by state

<http://golfingnear.com>

Email search by domain

<http://emailbydomain.com>

Auto manuals search

<http://auto.somanuals.com>

TV manuals search

<http://tv.somanuals.com>