



DTL139
DTL140
DTL141
DTL142

You can rely on Defy. To simplify.

TOP LOADER Automatic Washing Machine

Users Manual

Record in the space below the listed information for future reference.

SERIAL NUMBER.....

DATE OF PURCHASE.....

PURCHASED FROM.....

.....

The manufacturer strives for continuous improvement. For this reason, the text and illustrations in this manual are subject to change without notice.

Contents

Introduction	3
Important safety Instructions	4
Know your washing machine	6
Accessories	6
Installation	7
Control Panel	9
Initial Use	10
Normal Usage	11
How to use Function and Program	12
Various functions	13
Preset	13
Remember	13
Blanket	13
Two Step	14
Child lock	14
Multiple Water Power	14
Delete End of Buzzer	14
Water Level	14
Drain Residual Water	14
Using Detergents, Softeners, & Bleach	15
Trouble Shooting	16
Care & maintenance	17
Technical Specifications	17
Owners responsibility	18
Things to be done for Energy saving	18
Disposing of the old washing machine	18
Service Centres	19
Warranty	20

1 Introduction

Dear customer,

Your new Defy Top Loader washing machine was manufactured in a state of the art facility and has passed the strictest quality control procedures.

Please read this manual carefully before using your washing machine for the first time and then store it within easy reach for future reference.

This manual will provide you with information on how to operate and care for your washing machine to gain the maximum benefit from it.

We trust you will enjoy years of trouble free use.

EXPLANATION OF SYMBOLS



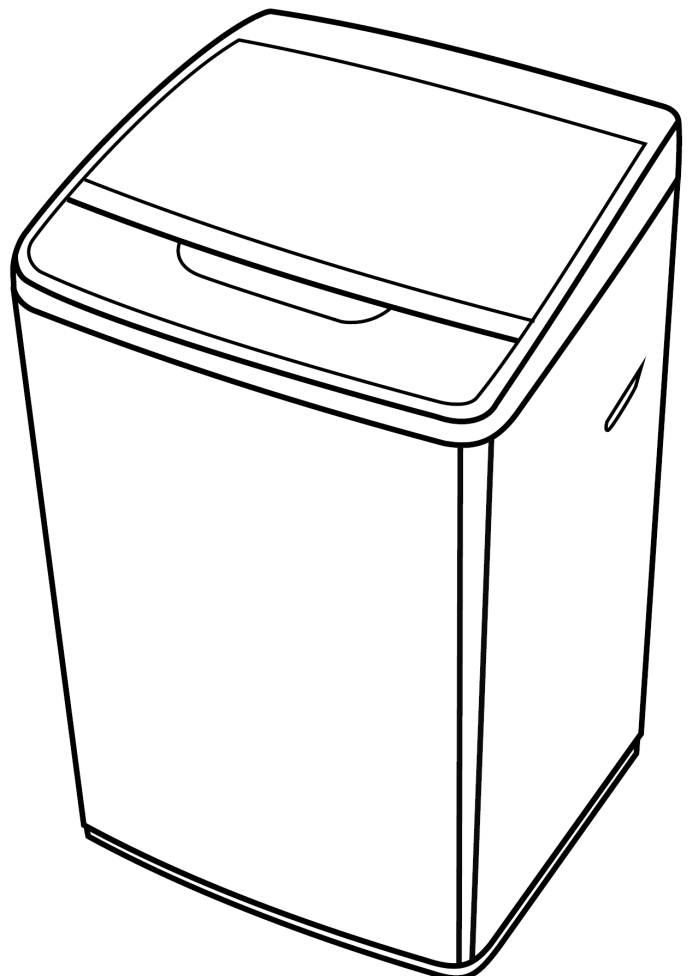
Important information



Warning—Hazardous situations



Warning—Electric shock



PLEASE REGISTER YOUR PRODUCT AT

www.defy.co.za

DEFY APPLIANCES (PTY) LTD

P.O.BOX 12004

JACOBS

DURBAN

4026

SOUTH AFRICA

2 Important safety instructions



General safety

- **This washing machine is not intended for use by persons (including children) with reduced physical, sensory or mental capabilities or lack of experience and knowledge unless they have been given supervision or instruction concerning the use of the washing machine by a person responsible for their safety.**
- **Children should be supervised to ensure that they do not play with the washing machine.**
- Never place the washing machine on a carpeted floor. Lack of airflow beneath the machine could cause overheating.
- In case of a malfunction or maintenance work, disconnect the washing machine from the electrical mains immediately. Repairs must only be made by a qualified technician.
- Before washing, check all clothes for loose buttons and tears. Check pockets for coins, pins or other small articles. Close zips and fasteners. Wash small articles inside a pillow case.
- Do not wash clothes stained with or soaked in petrol, thinners, kerosene, vegetable oil or any other flammable liquids. Nor should any of these liquids be added to the wash water as they constitute a fire hazard or there may be a risk of an explosion.
- Only use the machine for washing fabrics. Do not attempt to wash plastic leather or fibreglass. Sort and separate clothes by fabric, colour and degree of dirt.
- Use detergents, softeners and supplements suitable for top loading automatic washing machines only.
- Always unplug the machine from the wall socket when it requires cleaning or service. Only permit qualified persons to repair or install parts in the washer.
- **Do not use water which is hotter than 50 degrees Celsius as this may deform plastic parts of the machine, which could result in injury, electric shock or water leakage.**
- The water supply and draining hoses must be securely fastened and remain undamaged to prevent water leakage.
- Check the water supply hose connection by turning on the water before washing and ensure there is no water leakage.
- Follow the instructions on the textile tags and on the detergent package.
- Installation and repairing procedures must be carried out by an Authorized Service Agent. Repairs carried out by incompetent persons create a user risk: There may be a risk of accidental fire. If the washer operates abnormally, it may cause an injury. The Manufacturer shall not be held liable for damages that may arise from procedures carried out by unauthorized persons.
- **Do not expose the machine to any type of flame or put cigarettes or any volatile substances on the machine top.** The machine may catch fire or the machine may be deformed due to its large number of plastic components.
- **Do not install the machine in a bathroom or very humid place.** Doing so may cause a malfunction or result in a short circuit and there is a risk of an electric shock.
- **Never wash the machine by spreading or pouring water onto it!** Avoid spraying water on to the control panel and back of the machine. There is the risk of an electric shock, and it may cause the machine to malfunction.

	Warning! Never reach into or put your hands into the wash/spin tub whilst the machine is operating. If you reach into the wash/spin tub serious injury could result. Wait until all motion stops.
	Warning! If the wash/spin tub does not stop within 15 seconds after the washer lid is opened, turn off the washer immediately and call an authorised service person.
	Warning! The machine must be unplugged during installation, maintenance, cleaning and repairing procedures to avoid the risk of an electric shock.

- **Do not wash, rinse or spin water proof fabrics such as sleeping bags, raincoats, car covers etc.** Washing these types of materials may lead to injury through abnormal vibration during spinning or damage may result to the washing machine, wall, floor and clothes.
- Keep hands and feet away from the bottom of the washing machine when it is in use to avoid the risk of injury.
- Do not stand on the washing machine or place weight on the washing machine. Damage to the washing machine may result and there is a risk of personal injury.
- Turn off the water supply at the tap when the washing machine is not in use to minimise the risk of damage that could arise from water leakage. Unplug the washing machine if it is not going to be used for a long period of time.

Intended use

- The washing machine must only be used domestically and for the purposes for which it was designed.

Children's safety

- Electrical products are dangerous for children. Keep children away from the washing machine when it is in use. Use child lock to prevent children from tampering with the washing machine controls.
- Store all detergents and additives in a safe place away from the reach of the children by closing the cover of the detergent container or sealing the detergent package.
- Do not allow children to play on or in the machine. If a child accidentally falls into the wash/spin tub, serious injury could occur. Close the lid when leaving the room where the machine is located.
- Keep children away from the washing machine and keep boxes or steps well away from the washing machine to prevent children from stepping up and accessing the controls, lid and wash tub of the washing machine.

Transportation of the machine

1. Unplug the machine before transporting it.
2. Remove water drain hose and water supply hose connections.

3. Drain all remaining water from the machine.

Unpacking

- Remove all packaging and dispose of it in a responsible manner. Plastic bags should be cut up to prevent children playing with them and accidentally suffocating.
- Open the wash-tub lid and remove all the accessories stored in the wash tub.
- Do not attempt to operate the machine while any of the packaging is still in place.

Electrical connection

- The washing machine must be earthed and the manufacturer and seller do not accept responsibility for any damage due to incorrect electrical connection.
- Connection must comply with national regulations.
- The washing machine should be plugged into a 16 Amp, 230-240V~50Hz earthed 3 pin wall socket. If the current value of the fuse or breaker in the house is less than 16 Amps, have a qualified electrician install a 16 Amp fuse.

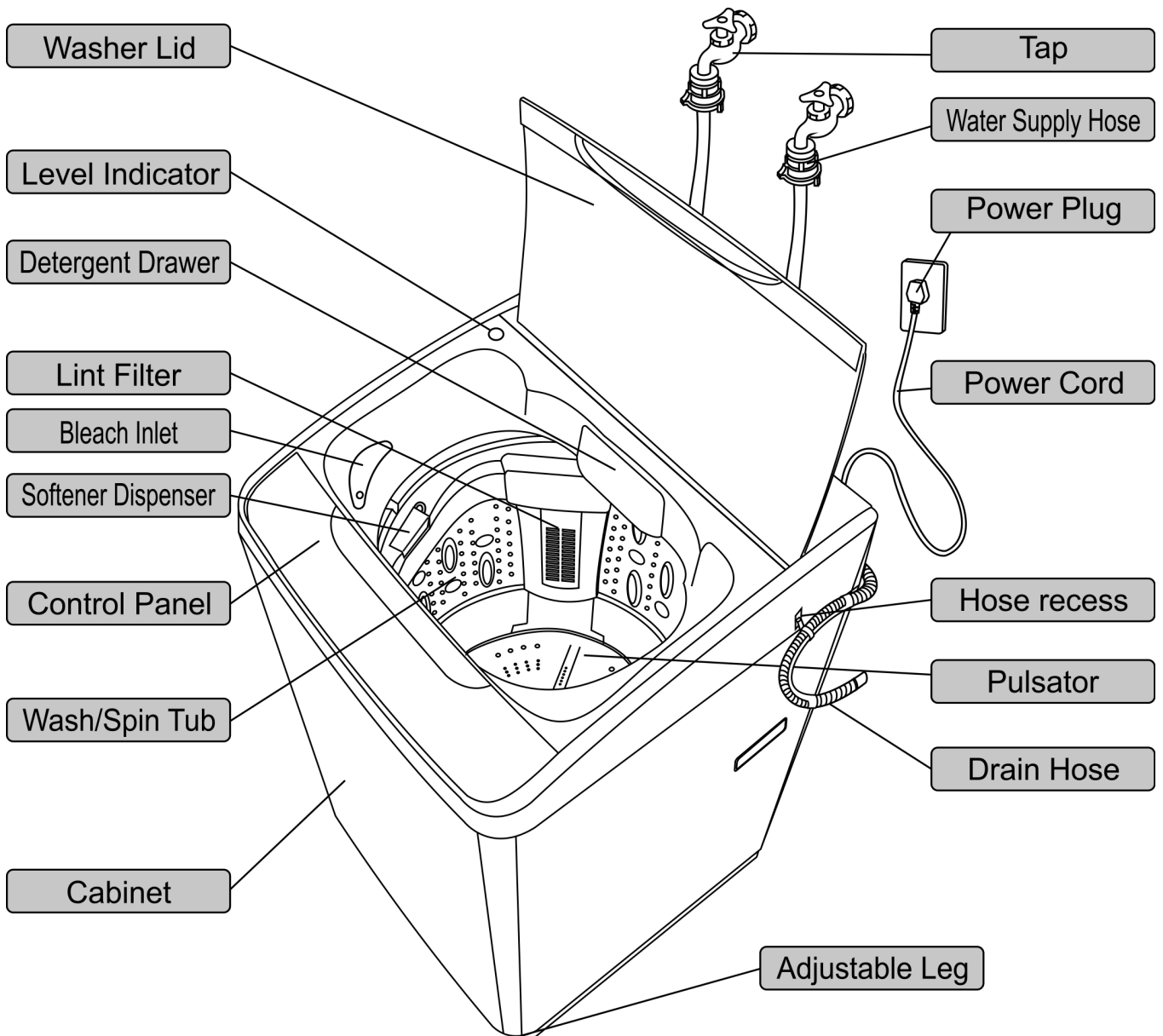
Ensure that the power plug and power cord are properly connected.

- Never touch the plug with wet hands!
- Never unplug by pulling on the cable, always pull out by grabbing the plug.
- Do not operate a damaged washing machine. Consult with your nearest DEFY service centre should you have any concerns.
- If the power cable is damaged, it must be replaced by the manufacturer, after sales service or a similarly qualified person.
- Never plug the washing machine into the wall socket during installation. Death or serious injury may result.
- For safety reasons, the wall socket and the plug should be accessible after installation.
- Do not make connections via extension cables or multi-plugs.



Warning: Installation and electrical connections of the machine must be carried out by an Authorized Service Agent. The Manufacturer shall not be held liable for damages that may arise.

3 Know your washing machine







Accessories

Instruction manual	Cold water Supply Hose	Hot water Supply Hose	Drain Hose OPTION FOR UP DRAIN STYLE	Bottom Cover	Screw
			 Hose Band		

	The manufacturer strives for continuous improvement. For this reason, technical specifications, text and illustrations in this manual are subject to change without notice.
	Figures in this manual are schematic and may not match your machine exactly.
	Values stated on the machine labels or in the documentation accompanying it are obtained in laboratory conditions in accordance with the relevant standards. Depending on operational and environmental conditions of the machine, these values may vary.

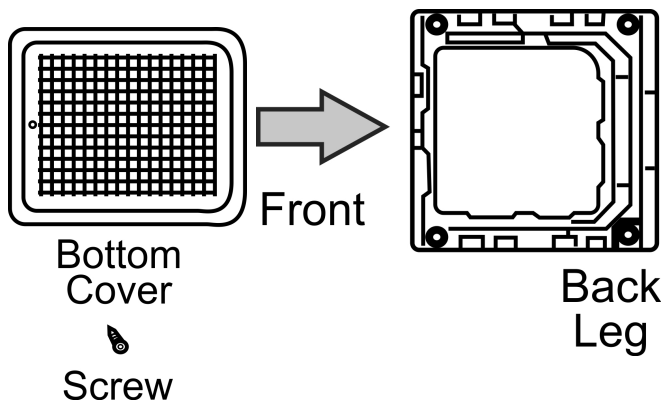
4 Installation

Installation and electrical connections of the machine must be carried out by an Authorized Service Agent. Review information in the user manual and ensure that the electricity, water supply and water drainage systems are appropriate before calling an Authorized Service Agent. If they are not, call a qualified technician and plumber to have any necessary arrangements carried out.

	Preparation of location, electrical, tap water and waste water installations of the machine are the customer's responsibility.
	Warning: Installation and electrical connections of the machine must be carried out by an Authorized Service Agent. The Manufacturer shall not be held liable for damages that may arise.
	Warning: Prior to installation, visually check if the machine has any defects on it. If so, do not have it installed. A damaged machine is a safety risk.
	Ensure that the water inlet, discharge hoses and power cable are not folded, pinched or crushed, during or after installation or cleaning procedures.

Installing the bottom cover

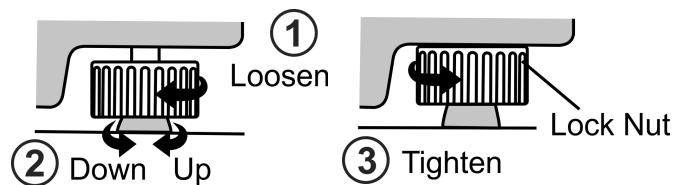
1. Unplug the power cord of the machine.
2. Carefully lay the front side of the machine on a soft mat or cushion. (Be careful not to dent the frame)
3. Slide the bottom cover into the retainers and push the cover all the way in.
4. Fasten the bottom cover with the supplied screw.
5. Carefully move the machine back into the upright position.





Appropriate installation location

- Place the machine on a rigid floor that has sufficient load carrying capacity.
- Choose a well ventilated dry location out of direct sunlight.
- Do not place the machine on the power cable.
- Do not install the machine at places where the temperature may fall below 0°C.
- Place the machine at least 10 mm away from the edges of other furniture.
- Hot and cold water taps should be located within 1 metre of the inlet valves.

Adjust the adjustable leg of the machine if necessary to ensure that the machine is level. The maximum permissible inclination of the ground surface is 2 degrees. A machine that is not levelled and is unstable will vibrate and generate excessive noise.

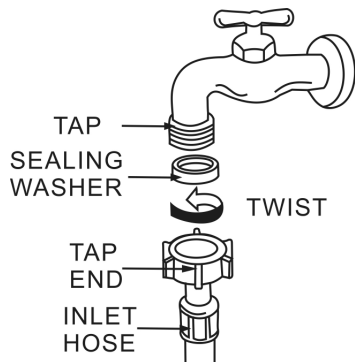


	Warning: Do not place the machine on a rug or carpeted floor as this may restrict ventilation openings at the bottom of the machine.
	Warning: Do not use old or used water inlet hoses on the new machine. It may cause stains on your laundry.

Connecting the water supply

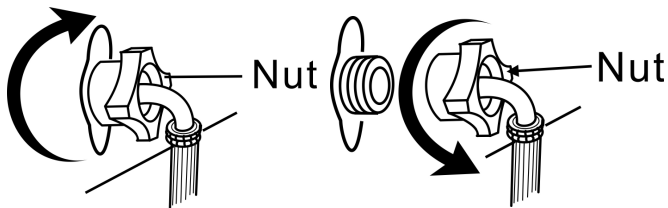
1. Check that the sealing washers are correctly seated.
2. Attach the curved end of the water supply hose to the inlet valve of the machine, tighten the coupling nuts by hand. Never use a tool when tightening the nuts.
3. Attach the straight end of the hose to the tap. Tighten the coupling nuts by hand.
4. Open the taps fully after completing the hose connection and check for water leaks. If there are any leaks, turn off the tap and remove the nut. Retighten the nut carefully after checking the seal. To prevent water leakages and damages caused by them, keep the taps closed when the machine is not in use.

	Warning: Ensure that the cold and hot water connections are made correctly when installing the machine.
	Warning: Do not use water that is hotter than 50°C

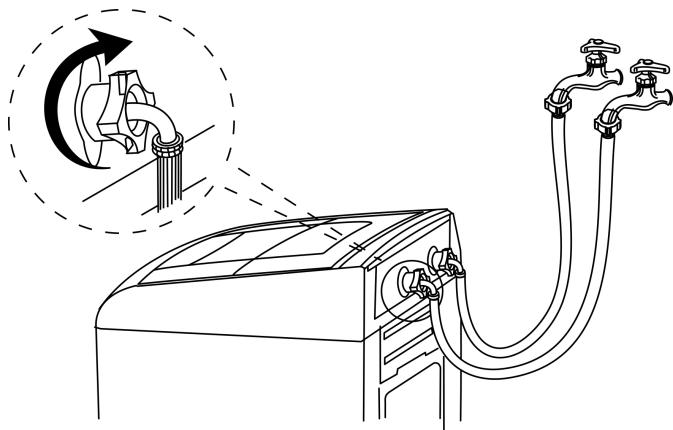


Fitting the water supply hose to the washing machine:

Hold the hose and turn the nut clockwise. Firmly hand tighten the nut.

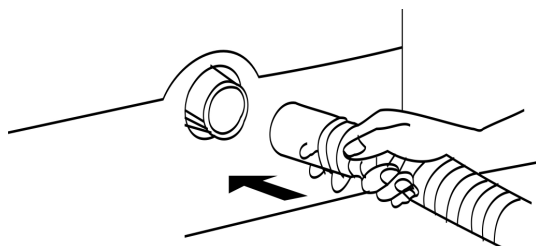


To remove the hose, switch off the tap and then turn the nut counter clockwise.

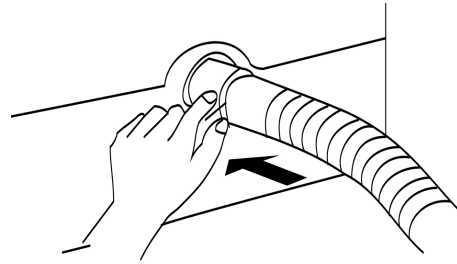


Fitting the drain hose

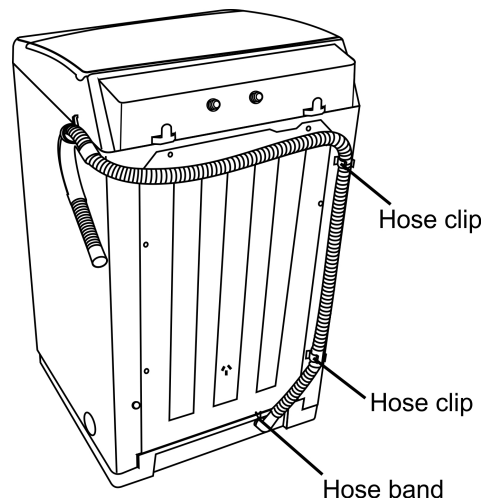
1. Compress the two ears of the drain hose clamp with your hands and connect the drain hose to the pump outlet. Fix the clamp in place.



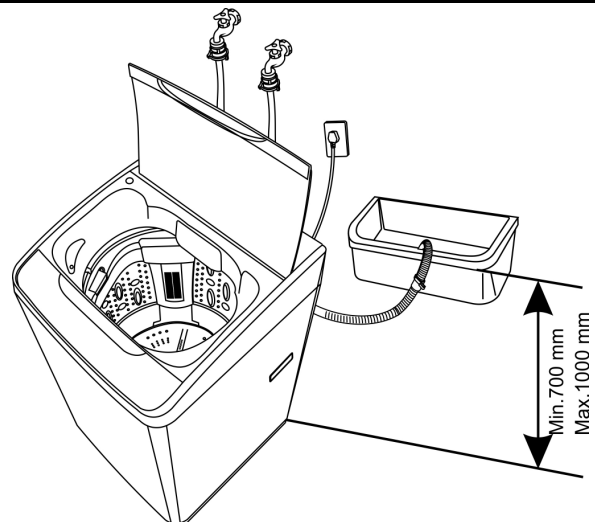
The hose should not be twisted, bent or squeezed shut and must not be stepped on.



2. Pull the outlet end of the drain hose upwards and fix it with the hose clamp on the rear of the washing machine cabinet.
3. When the machine is not in use, hang the drain hose on the recess on the right side of the machine cabinet. When the machine is in operation, place the outlet end of the drain hose into the sink or a dedicated drainage outlet.



CAUTION: Ensure the height of drain hose is not less than 700 mm. The machine will not operate properly if the hose is less than 700 mm high.



Warning: The drain hose must be securely fitted for good water flow and to avoid risk of flooding or injury.

5 Control panel

DETERGENT Indicators

- Detergent scoop volume indicators.

Note: Values may differ depending on your model. Please refer to detergent charts on page 11.

TIMER And PRESET Indicators

- This indicator shows the remaining time during washing. (E.g.) Remaining time is 20 minutes
- This indicator shows when the washing is finished during presetting. (E.g.) Finish washing 2 hours later
- When abnormal conditions occur, the indicator displays a warning. (E.g.) Water does not flow

TEMPERATURE Button

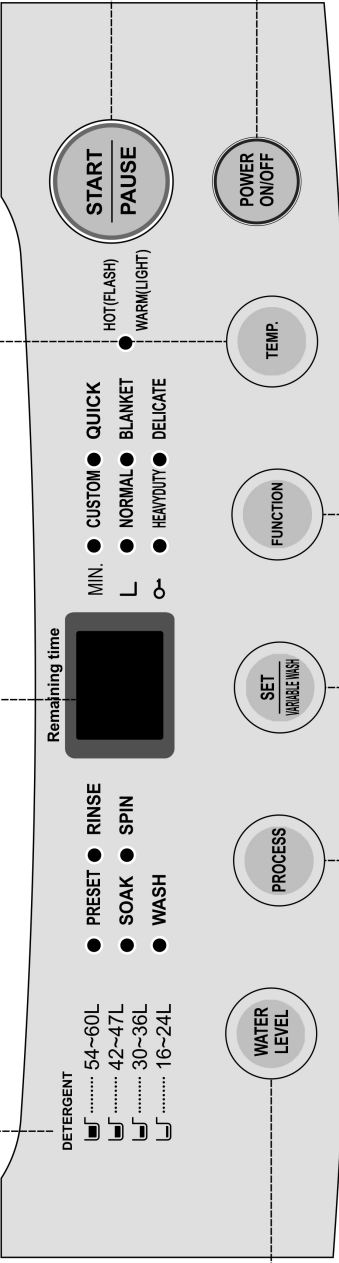
- In order to choose the water temperature Press the TEMP button.

START/PAUSE Button

- This button can be used for starting the washer operation.
- This button can also be used to temporarily stop the washer operation.
- To restart the washer operation, press the START/PAUSE button again.

WATER LEVEL Button

- Choose the appropriate water level relative to the load size.
- Various water levels for washing and rinsing can be selected.



PROCESS Button

- The PROCESS button is used to select the PRESET, SOAK, WASH, SPIN and RINSE processes.

VARIABLE WASH Button

- Press the VARIABLE WASH button to adjust water power during washing or rinsing.
- The FUZZY function will not be effective when this function is selected.
- These functions will not be effective for the DELICATE or BLANKET function.

SET Button

- The SET button can be used to select PRESET, SOAK, WASH time, RINSE time, and SPIN time.

FUNCTION Button

To choose the washing function, press FUNCTION button.

NOTE: If you choose the NORMAL, HEAVY DUTY, CUSTOM functions, the washer will automatically begin the FUZZY operation. (When the machine starts, the motor rotates and senses the weight of the clothing and appropriate program settings are calculated).

POWER ON/OFF Button

To turn the power on, press the POWER ON/OFF button. To turn the power off, press the POWER ON/OFF button again.

When the washing cycle has completed, the machine will automatically power off after 5 seconds have elapsed.

NOTES:

- To change the wash program, press the POWER ON/OFF button and then press it again.
- If the machine is switched on and no program is selected, the machine will automatically power off after 10 minutes have elapsed.

6 Initial use

Before first use of the machine, ensure that all preparations are made in accordance with the instructions in sections “Important safety instructions” and “Installation”.

To prepare the machine for washing laundry for the first time, perform a drum cleaning (maintenance wash) procedure as outlined in the care and maintenance section on page 17 of this manual.

PREPARATION

- Close all zippers, snaps and hooks to prevent them from snagging other articles.
- Remove pins, and other hard items to prevent them from scratching the machine.
- Empty all pockets, remove all items in pockets such as coins, pens and paper clips, and turn pockets inside out and brush pockets. Such objects may damage the machine and cause noise.
- Put small size clothes such as infant's socks and nylon stockings in a laundry bag or pillow case.
- Place curtains in the wash tub without compressing them. Remove curtain attachment items.
- Turn down cuffs and turn synthetic knits inside out.
- Tie strings and sashes so they will not tangle.
- Treat spots and stains before washing.
- Tough stains must be treated properly before washing. If unsure, check with a dry cleaner.
- Use only dyes/colour changers and limescale removers suitable for machine wash. Always follow package instructions.
- Wash trousers and delicate laundry turned inside out.
- Keep laundry items made of Angora wool in the freezer for a few hours before washing. This will reduce pilling.
- Laundry that has been soiled with flour, lime dust, milk powder, etc. must be shaken off before placing into the machine. Dusts and powders on the laundry may build up on the inner parts of the machine in time and can cause damage.

SORTING





Mix large and small items in each load.
Separate heavily soiled items from lightly soiled ones.
Separate dark colours from light colours.
Separate colourfast items from non colourfast ones.
Separate robust fabrics from delicate.
Separate whites from coloured fabrics.

LOADING

Lift the washer lid.
Arrange the articles to be washed loosely round the perimeter of the tub.
Load evenly as an off balance load may cause unnecessary vibrations.
Use a large load programme when washing permanent press garments. These items need more space to move than heavy items such as jeans and towels.
Do not overload the machine as this will result in poor cleaning, increased creasing and excessive lint formation.

Correct load capacity

The maximum load capacity depends on the type of laundry, the degree of soiling and the washing program desired.

	Warning: If loading of the laundry has been incorrectly done, noise and vibration problems may occur in the machine.
	Some water may have remained in the machine due to the quality control processes in the production of the machine. It is not harmful for the machine.
	Warning: Use only detergents manufactured specifically for top loader washing machines.
	When using detergent, softener, starch, fabric dye, bleach or limescale remover, read the manufacturer's instructions on the package carefully and follow the dosage values. Use a measuring cup if available.

7 Normal usage

1. Preparation

- Connect the Drain hose. Connect the water supply hose to the tap and open the tap. Plug the Power Cord into the wall socket. load the laundry into the washer.

2. Press the **POWER ON/OFF** button.

3. Press the **START / PAUSE** button.

- The sensor tests the clothes weight automatically. (For **NORMAL/CUSTOM/HEAVY DUTY**)

The proper water power, water level, wash/spin time and rinse times are automatically applied.

4. Use the recommended amount of detergent specific to your model as indicated in the charts below.

5. Close the washer lid

- If the washer lid is not closed before spinning commences, the washer buzzer will emit an alarm and the washing machine will stop working.

Too much detergent results in poor rinsing and too little detergent results in poor washing.

Recommended amount of detergent: DTL139/DTL140

DETERGENT CHART. DTL139/DTL140								
Water Level	15	20	24	28	32	38	45	50
Water Volume (Approx. L)	15	20	24	28	32	38	45	50
Detergent Indicators								
Powdered detergent volume (g)	12~20		20~28		28~36		36~45	
Alternate detergent volume	Adjust the detergent volume according to the type of detergent. Follow recommendations on detergent package.							

Recommended amount of detergent: DTL141/DTL142

DETERGENT CHART. DTL141/DTL142								
Water Level	16	24	30	36	42	47	54	60
Water Volume (Approx. L)	16	24	30	36	42	47	54	60
Detergent Indicators								
Powdered detergent volume (g)	12~25		25~35		35~50		50~70	
Alternate detergent volume	Adjust the detergent volume according to the type of detergent. Follow recommendations on detergent package.							

8 How to use Function and Program

Preparation:

1. Fit the drain hose, open the water supply tap. Plug the power cable into the wall socket, place clothes inside the wash tub.
2. Press the **POWER ON/OFF** button.
3. Press the **FUNCTION** button and choose the function most suited to the clothing to be washed. Please refer to the chart below on **FUNCTION & CHOOSING A PROGRAM GUIDE**.

4. Press the **SELECT** button and choose the cycle you require. The light will move rightwards.

SOAK→**WASH**→**RINSE**→**SPIN**→**PRESET**



5. Press the **SET** button to choose the **SOAK**, **WASH**, **SPIN** times and **RINSE** type and **RINSE** times.

- **SOAK** time indicates: 0→5→10→.....→35→40 minutes



(This function is not available for the **DELICATE/BLANKET** functions).

- **WASH** time indicates: 0→1→2→.....→19 →20 minutes..



- Number of **RINSE** times indicates: 0→1→2→3→4 (Number of rinse times).



- **SPIN** time indicates: 0→1→2→.....→8→9 minutes. (Except for the **DELICATE** function).



0→1→2→3 minutes (For the **DELICATE** function).



6. Press the **WATER LEVEL** button, choose the appropriate water level and then add the detergent into the detergent dispenser or add the detergent into the wash tub. (Do not allow the detergent to come into contact with the clothes).

7. Press the **START/PAUSE** button.

8. Close the washer lid.

- To change **FUNCTION** or **SELECT** during operation, please switch off the power, switch the power back on and choose the function required.

FUNCTION & CHOOSING A PROGRAM GUIDE

FUNCTION	Suitable clothes	Programme operation status		
		Washing time (minutes)	Rinsing Type	Spinning Time (minutes)
CUSTOM	All types of clothes	10 min.	Rinse 2 Times	5
NORMAL	Normal clothes	5-12 min.	Rinse 2 Times	5-6
HEAVY DUTY	Dirty clothes	7-14 min.	Rinse 2 Times	7-8
QUICK	Lightly soiled clothes	15 min.	Rinse 1 Time	3
BLANKET	Blanket or bulky	12 min.	Rinse 2 Times	8
DELICATE	Underwear and articles with embroidery	6	Rinse 2 Times	2

9 Various Functions

PRESET

1. Open the tap and load the laundry into the wash tub, ensure that the drain hose has been correctly fitted.
2. Press the **POWER On/OFF** button.
3. Select the required **FUNCTION**, **SELECT** and **WATER LEVEL**.
4. Press the **PROCESS** button until the **PRESET** light flashes, press **SET** to select the required **PRESET** time (the time washing will be finished).

- **PRESET** indication:

6→7→8→.....24→0→1.....5 hours



5. Press the **START/PAUSE** button.
6. Add the detergent into the detergent dispenser or add the detergent into the wash tub. (Do not allow the detergent to come into contact with the clothes). Close the washer lid.

- All the lights except **PRESET** will switch off after approximately one minute has elapsed.
- **PRESET** confirm: Press the **SET** button to indicate the programs selected, these will light up for approximately 5 seconds as a reminder of the programs chosen.
- **PRESET** cancel or to change: **PRESET** is cancelled automatically when the machine is powered off; Switch the power on and set **PRESET** again to change it.
- This function is not available for the **DELICATE** function.

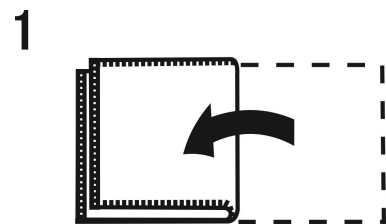
REMEMBER FUNCTION

When selecting **NORMAL**, **CUSTOM** or **HEAVY DUTY**, 30 seconds after starting, the machine will remember these programs and will start with these programs the next time the machine is powered on.

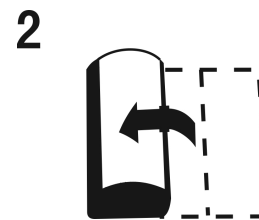
- This function is not available for the **DELICATE** or **BLANKET** function.
- **PRESET** and **WATER LEVEL** will not be remembered.
- **WASH**, **RINSE** and **SPIN** for the **CUSTOM** program will be remembered.
- The memory will be lost if plug is removed.

BLANKET

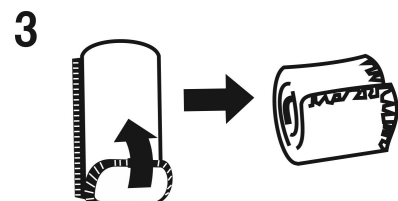
1. Press the **POWER/ON OFF** on and ensure that the drain hose has been correctly fitted.
2. Open the tap and press the **FUNCTION** button until the **BLANKET** light flashes.
3. Dissolve the detergent with around 5L warm water (approximately 30°C) and pour into the wash tub of the washing machine.
4. Fold up the blanket as per the illustrations and place it into the wash tub.



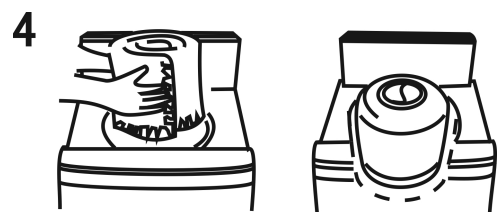
Fold the blanket lengthways in two.



Fold four times in the same direction.



Roll up the blanket.



Place the blanket into the wash tub with the edges of the blanket facing downwards.

5. Press the **START/PAUSE** button.
6. Close the washer lid.

TWO STEP

The water inlet is controlled in 2 steps:

The first step (1) is with a lesser amount of water, thus the density of the detergent is higher than normal. After washing for a period of time, the second step is activated (2) and the machine allows the rest of the water in.

For example, the water level was set at 5, the machine may give level 2, for step (1), then the rest of the water level 3, for step (2).

- This function will not be activated when selecting water level 1 or 2, and the **DELICATE** or **BLANKET** function.
- When **SOAK** is selected, this function will not be activated after soaking.

CHILD LOCK

Press the **POWER ON/OFF** button to switch on the power, and press the **WATER LEVEL** button for 4 seconds until a sound from the buzzer emits.

To restore, repeat the above or pull out the plug. When **CHILD LOCK** is set, **CHILD LOCK** on the control panel lights up indicating **E5**. If the washer lid is opened during washing the alarm will buzz for approximately 5 seconds.

MULTIPLE WATER POWER

Press the **WATER POWER** button to adjust the water current during washing or rinsing.

Press it once again, the digital display indicates **H0** (standard water power), **H1**, **H2**, **H3**, **H4**, (stronger, **H4** being the strongest); **L1**, **L2**, **L3**, **L4** (weaker, **L4** being the weakest).

Note: This function cannot be set for the **DELICATE** or **BLANKET** modes.

DELETE END OF BUZZER

Press the **POWER ON/OFF** button to power on the machine.

Press and hold down the **START/PAUSE** button for 4 seconds until a sound emits from the buzzer. To restore the **End Buzzer** sound repeat the above steps.

WATER LEVEL

This button allows you to choose the required water level during the **WASH/RINSE** process.

How to set the water level:

Press **SELECT** until the **WASH** light flashes,

Press the **WATER LEVEL** button to choose the required water level,

Press the **SET** button to set the wash time.

Press the **SELECT** button until the **RINSE** light flashes,

Press the **WATER LEVEL** button to choose the required water level,

Press the **SET** button to set the **RINSE** times and **RINSE** type.

Press the **SELECT** button until the **SPIN** light flashes,

Press the **SET** button to set the **SPIN** time.

Finally press the **START/PAUSE** button

The machine will start operating according to the set wash water level and rinse water level.

DRAIN RESIDUAL WATER

With this function selected, the drain valve will be opened to drain the residual water 9 minutes after the program has finished.

How to drain residual water:

Press **POWER ON/OFF** to switch the washer on, hold the **PROCESS** button for more than 4 seconds until the buzzer sounds.

10 Using Detergents, Softener & Bleach

Detergent

- Add a measured amount of detergent to the detergent drawer.
- Use only detergent specifically recommended for top loading washers and follow the manufacturer's instructions.

Choosing the detergent type

- The type of detergent to be used depends on the type and colour of the fabric.
- Use different detergents for coloured and white laundry.
- Wash delicate clothes with special detergents only.
- When washing dark coloured clothes and quilts, use a liquid detergent.
- Wash woollens with special detergent made specifically for woollens.

liquid detergent


- Add liquid detergent into the detergent drawer before washing. If the liquid detergent has lost its "fluidity", dilute it with water before pouring it into the detergent drawer.
- Note: in order to avoid residual detergent build up, clean the detergent drawer every 2-3 months.

Adjusting detergent amount

- The amount of detergent to be used depends on the amount of laundry, the degree of soiling and water hardness.
- Do not use amounts exceeding the dosage quantities recommended on the detergent package to avoid problems of excessive foam and poor rinsing.
- Use less detergent for small amounts or lightly soiled clothes.

Using gel and tablet detergent

- If the gel detergent thickness is not fluidal or it is a capsule liquid tablet, place it directly into the wash tub before washing.
- Place tablet detergents into the detergent drawer or directly into the wash tub before washing.

	Tablet detergents may leave residues in the detergent compartment. If this should occur, place the tablet detergent in amongst the laundry near the lower part of the wash tub for future washes.
---	---

Using softener

- Add softener into the softener dispenser before washing. The softener will flow into the inner drum in all standard programs except the delicate program.
- Avoid spilling undiluted softener onto the clothes in the wash tub as it may damage them.
- If the softener has lost its "fluidity", dilute it with water before pouring it into the softener dispenser.

Note: in order to avoid residual softener build up, clean the softener dispenser every 2-3 months.

How to use bleach

If required, add a measure of liquid chlorine bleach to the bleach inlet. Avoid spilling bleach onto the clothes in the machine as undiluted bleach may damage them.



1. Dilute bleach with twice the volume of water. Use only a little amount of bleach and rinse clothes well to avoid skin irritation. Do not pour bleach onto clothes.
2. Read and carefully follow the directions and warnings regarding the use of bleach.
3. Do not use bleach for coloured fabrics.
4. Do not use bleach and detergents by mixing them.

Using starch

- Add liquid starch, powder starch or fabric dye into the softener compartment.
- Do not use softener and starch together in a washing cycle.
- Wipe the inside of the machine with a damp and clean cloth after using starch.

Using limescale remover

- When required, use limescale removers manufactured specifically for washing machines only.

	When using detergent, softener, starch, fabric dye, bleach or limescale remover read the manufacturer's instructions on the package carefully and follow the dosage values. Use a measuring cup if available.
	Important: Use only detergents manufactured specifically for top loader washing machines.

11 Trouble shooting

Problem	Problem indicator	Where to Check
The machine does not work at all.		<p>Check the POWER ON/OFF button.</p> <p>Check the START/PAUSE button.</p> <p>Check whether in the PRESET mode.</p> <p>Check that the power cord is securely plugged in.</p> <p>Check whether there has been a power failure.</p> <p>Check whether there is blown fuse or tripped circuit breaker.</p>
Water does not flow into the wash/spin tub.	E1	<p>Check whether the tap is open.</p> <p>Check to see if the water supply has been cut off.</p> <p>Check whether the metal filter in the inlet filter is clogged.</p> <p>Check to see that the water pressure is not too low.</p> <p>Check that the height of the drain hose is above 700 mm.</p>
Water does not drain.	E2	<p>Check that the height of the drain hose is not above 1000 mm.</p> <p>Check that the drain hose is not kinked or obstructed.</p> <p>Check to see if the drain hose is too high off the ground.</p> <p>Check to see if the water outlet is clogged.</p>
The machine does not spin.	E3	<p>Check to see that the laundry is evenly distributed and that it has not clumped on one side of the wash/spin tub.</p> <p>Check whether the washer is on a level surface.</p>
	E4	<p>Close the washer lid. Ensure the lid is not being obstructed from closing.</p>
Machine does not wash.	E5	<p>Check whether the CHILD LOCK is on.</p> <p>Close the washer lid.</p>
Other problems.	ER	<p>Press the POWER ON/OFF button to turn off the power.</p> <p>Please call your nearest DEFY service agent or your dealer.</p>
	EC	
<p>NOTE: The problem indicators can be cleared by pressing the START/PAUSE button once. To clear the emergency stop press the START/PAUSE button again to restart the operation.</p>		


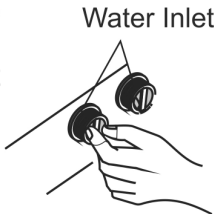
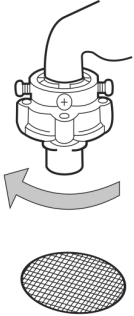
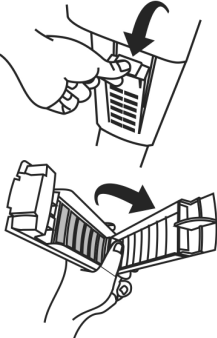


Warning: If the problem cannot be eliminated, even after the instructions have been followed, consult with your dealer or Authorized Service Agent. Never try to repair a non functional machine yourself.

The following conditions are normal to the operation of the washer and are not faults:

1. During washing or rinsing there is water inlet into the wash tub. This is due to a water level decrease, the machine will compensate by automatically adding water in this case.
2. The spin tub stops and starts at the beginning of the spinning cycle. This is intermittent spinning for more effectual spinning.
3. Water inlet and rinsing occur during spinning. This is due to the automatic lean correction that compensates for uneven distribution of clothing in the wash tub.
4. There is a sound like water flowing after spinning. This is due to the balancing liquid in the balance ring which helps reduce vibration during the spinning process.
5. The control panel remains warm after the machine has been powered off. This is due to the "Remember" function circuitry operating.
6. A power failure during a washing cycle: The machine could not complete the cycle. Please reset the washing cycle.

12 Care and maintenance

<p>Cleaning the washing machine Use a soft cloth to wipe off water or dirt from the surface of the machine.</p> <ul style="list-style-type: none"> • Do not spray water directly onto the machine body. • Do not use detergent, propellant and other chemicals for cleaning the machine as these may damage the machine. 	<p>Cleaning the water inlet valve Clean the water inlet valves every 6 months.</p> <ul style="list-style-type: none"> • Over time, the water inlet mesh bag may be blocked with dirt. • Remove the water inlet hose, take out the water inlet valve, clean the mesh bag then refit the mesh bag in the valve and refit the hose. 
<p>Cleaning the Hose Filter Clean the hose filter every 6 months.</p> <ul style="list-style-type: none"> • Turn the nut of the water supply hose counterclockwise, remove the water hose. • Clean out the dirt on the filter with a toothbrush. • Refit the water hose. 	<p>Cleaning the lint filter Clean the lint filter once every 7 days</p> <ul style="list-style-type: none"> • Remove the lint filter. • Pull out the debris and wash the lint filter in water. • Refit the filter. Ensure that it is correctly seated. 

Maintenance wash

It is advisable to do a maintenance wash or "boil out" once a month if you use your machine frequently.

If you use your machine less frequently then a maintenance wash 3 to 4 times a year should be sufficient. Please proceed as follows:

1) Dose your machine with a standard dose of detergent, or use 100 grams of Dishwasher detergent, NOT WASHING SODA

2) Programme the machine to the longest, hottest wash.

3) Without loading any washing, allow the machine to run through the full cycle.

Technical specifications				
Model No.	DTL139	DTL140	DTL141	DTL142
Dimension WxDxH (mm)	520x545x907	520x545x907	570x585x950	570x585x950
Net weight	31kg	31kg	37kg	37kg
Power output	330W	330W	400W	400W
Spin Speed (rpm)	850	850	850	850
Water Capacity (High)	50 Litres	50 Litres	60 Litres	60 Litres
Water consumption	120L/cycle	120L/cycle	148L/cycle	148L/cycle
Required water pressure	0.03~0.8MPa	0.03~0.8MPa	0.03~0.8MPa	0.03~0.8MPa
Electricity consumption	0.102kWh/cycle	0.102kWh/cycle	0.127kWh/cycle	0.127kWh/cycle
Rated voltage	230-240V~50Hz	230-240V~50Hz	230-240V~50Hz	230-240V~50Hz
Inner Tub	Stainless Steel	Stainless Steel	Stainless Steel	Stainless Steel
Inner Tub dimensions (Diameter/H)	318x424 mm	318x424 mm	335x460 mm	335x460 mm
Display	LED Display	LED Display	LED Display	LED Display
Delay Start	0~24h	0~24h	0~24h	0~24h
Wash noise	58db	58db	58db	58db
Spin noise	62db	62db	62db	62db
Colour	White	Metallic	White	Metallic

13 Owners Responsibility

SINCE THE FOLLOWING ARE NOT FACTORY FAULTS, THEY ARE THE OWNER'S RESPONSIBILITY

- Damage to the exterior finish, breakage of components, damage through improper use or installation of the washing machine or damage caused by moving the washing machine.

Before calling a Service technician or your dealer, please check the following:

- Is the machine plugged into the wall socket? Is the house circuit breaker on?
- Is the machine switched on? Has the washer lid been closed properly?
- Is the detergent dose correct? Is the filter clean? Is the tap open?
- Is there a water supply to the home? Have any of the hoses been twisted or kinked?

Things to be done for energy saving





- Always follow the instructions on the detergent packaging.
- Wash slightly soiled laundry at low temperatures.
- Use faster programmes for small quantities of lightly soiled laundry.

Disposing of the washing machine

- This washing machine has been manufactured with high quality parts and materials which can be reused and are suitable for recycling.
- **Do not dispose of the machine with normal domestic waste at the end of its service life.**

Please consult with your local authorities.

- **Should you at any time in the future scrap the washing machine, cut the power cord and take measures to render the door inoperative thereby preventing children, when playing, getting trapped inside.**

	Ensure parts and accessories are Installed according to the directions given in this instruction manual.
	The manufacturer strives for continuous improvement. For this reason, technical specifications, text and illustrations in this manual are subject to change without notice.
	Figures in this manual are schematic and may not match your machine exactly.
	Values stated on the machine labels or in the documentation accompanying it are obtained in laboratory conditions in accordance with the relevant standards. Depending on operational and environmental conditions of the machine, these values may vary.

14 Service Centres

BLOEMFONTEIN	160 Long Street, Hilton, Bloemfontein 9301. Tel. 051 400 3900 Bloemfontein.Service@defy.co.za
CAPE TOWN	5A Marconi Rd. Montague Gardens, 7441. Tel. 021 528 3000 CapeTown.Service@defy.co.za
DURBAN	35 Intersite Avenue, Umgeni Business Park, Durban 4051. Tel. 031 268 3300 Durban.Service@defy.co.za
EAST LONDON	16 Bowls Rd. Arcadia, East London 5201. Tel. 043 743 7100 EastLondon.Service@defy.co.za
JOHANNESBURG Commercial Head Office, Administration, Distribution, National Groups, Tel. Sales, Contracts and Credit.	Cnr. Mimetes & Kruger Sts. Denver ext.12 Johannesburg. 2094. Tel. 011 621 0200 or 011 621 0300 Gauteng.Service@defy.co.za
POLOKWANE	87 Nelson Mandela Drive. Superbia 0699. Tel. 0152 92 1166 / 7 / 8 / 9. Polokwane.Service@defy.co.za
PORT ELIZABETH	112 Patterson Road, North End, Port Elizabeth 6001. Tel. 041 401 6400 PortElizabeth.Service@defy.co.za
PRETORIA.	Block A1 Old Mutual Industrial Park. Cnr. D.F.Malan Drive & Moot Str. Hermanstad. 0082. Tel. 012 377 8300 Pretoria.Service@defy.co.za

OTHER AREAS ARE SERVICED BY OVER 200 AUTHORISED AGENTS. FOR FURTHER DETAILS PLEASE CONSULT THE NEAREST REGIONAL DEFY TECHNICAL SUPPORT CENTRE

15 Warranty

This certificate is issued by DEFY APPLIANCES LIMITED manufacturers of Defy and Ocean products, hereinafter the Company, to the original purchaser only, of the appliance described on the certificate and shall constitute the only warranty given in respect of this appliance.

The Company warrants to the original purchaser that for a period of TWO YEARS from date of purchase the appliance is free from defect under normal domestic use, both in workmanship and material, subject to the following conditions.

1. Repair or replacement of any part of this appliance, found by the Company to be defective, shall be at the election of the Company. The Company reserves the right to effect such service through any of its Service Divisions or Authorised Service Dealers. The cost of such service shall be borne by the Company in full, provided that the appliance is located no further than 50km from a Company Service Centre or an Authorised Service Dealer. Where the appliance is located beyond the 50km radius, the purchaser shall be liable for the standard travelling charges, as determined by the Company.
2. Vitreous enamelware, fuses and lamps are specifically excluded from these warranties. It is an express condition of these warranties that the purchaser takes due care and attention in the use and maintenance of the appliance. Abuse, misuse in conflict with operating instructions, connection to incorrect voltages and subjection to commercial use shall release the Company from its obligations.
3. This warranty shall become void and cease to operate if the appliance is dismantled by, or any repairs to the appliance are effected by any persons not duly authorised by the Company, or if substitute parts not approved by the Company are used in the appliance, or if the serial number of the appliance is removed.
4. The Company shall not be responsible for damages resulting from fire, flood, civil disturbances or any Act of God. The Company shall not, in terms of these warranties be responsible nor held liable for any consequential loss or damage of any kind caused by or due to the failure or malfunction of the appliance.
5. The Company shall not be responsible for transportation or other costs other than those incurred within the provisions of Point 1 of this Certificate.
6. These warranties shall not apply to the appliance if it is purchased or used beyond the borders of the Republic of South Africa, Namibia, Botswana, Swaziland and Lesotho.
7. Where service is requested under warranty and no fault or defect can be found by the Company, all costs incurred will be for the purchaser's account.
8. This Certificate as well as your invoice will serve as proof of purchase. For the purpose of warranty, it will be essential to produce this Certificate and invoice. Failure to do so, will render the purchaser liable for service costs.

**KEEP THIS CERTIFICATE AND SALES INVOICE AS
PROOF OF PURCHASE FOR WARRANTY PURPOSES.**

Free Manuals Download Website

<http://myh66.com>

<http://usermanuals.us>

<http://www.somanuals.com>

<http://www.4manuals.cc>

<http://www.manual-lib.com>

<http://www.404manual.com>

<http://www.luxmanual.com>

<http://aubethermostatmanual.com>

Golf course search by state

<http://golfingnear.com>

Email search by domain

<http://emailbydomain.com>

Auto manuals search

<http://auto.somanuals.com>

TV manuals search

<http://tv.somanuals.com>