



De'Longhi Appliances  
via Seitz, 47  
31100 Treviso Italia

5713216671/06.11



Instructions for use | **EC250**  
COFFEE MAKER



## Electrical connection (uk only)

Before using this appliance ensure that the voltage indicated on the product corresponds with the main voltage in your home, if you are in any doubt about your supply contact your local electricity company.

The flexible mains lead is supplied connected to a B.S. 1363 fused plug having a fuse of 13 amp capacity.

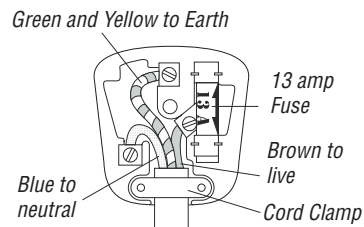
Should this plug not fit the socket outlets in your home, it should be cut off and replaced with a suitable plug, following the procedure outlined below.

Note: Such a plug cannot be used for any other appliance and should therefore be properly disposed of and not left where children might find it and plug it into a supply socket - with the obvious consequent danger.


Please note: We recommend the use of good quality plugs and wall sockets that can be switched off when the machine is not in use.

**IMPORTANT:** The wires in the mains lead fitted to this appliance are coloured in accordance with the following code:

GREEN AND YELLOW	EARTH
BLUE	NEUTRAL
BROWN	LIVE



As the colours of the wires in the mains lead of this appliance may not correspond with the coloured markings identifying the terminals in your plug, proceed as follows:

- The wire which is coloured green and yellow must be connected to the terminal in the plug which is marked with the letter E or by the earth symbol  or coloured green or green and yellow.
- The wire which is coloured blue must be connected to the terminal which is marked with the letter N or coloured black.
- The wire which is coloured brown must be connected to the terminal which is marked with the letter L or coloured red.

When wiring the plug, ensure that all strands of wire are securely retained in each terminal. Do not forget to tighten the mains lead clamp on the plug. If your electricity supply point has only two pin socket outlets, or if you are in doubt, consult a qualified electrician.

Should the mains lead ever require replacement, it is essential that this operation be carried out by a qualified electrician and should only be replaced with a flexible cord of the same size.

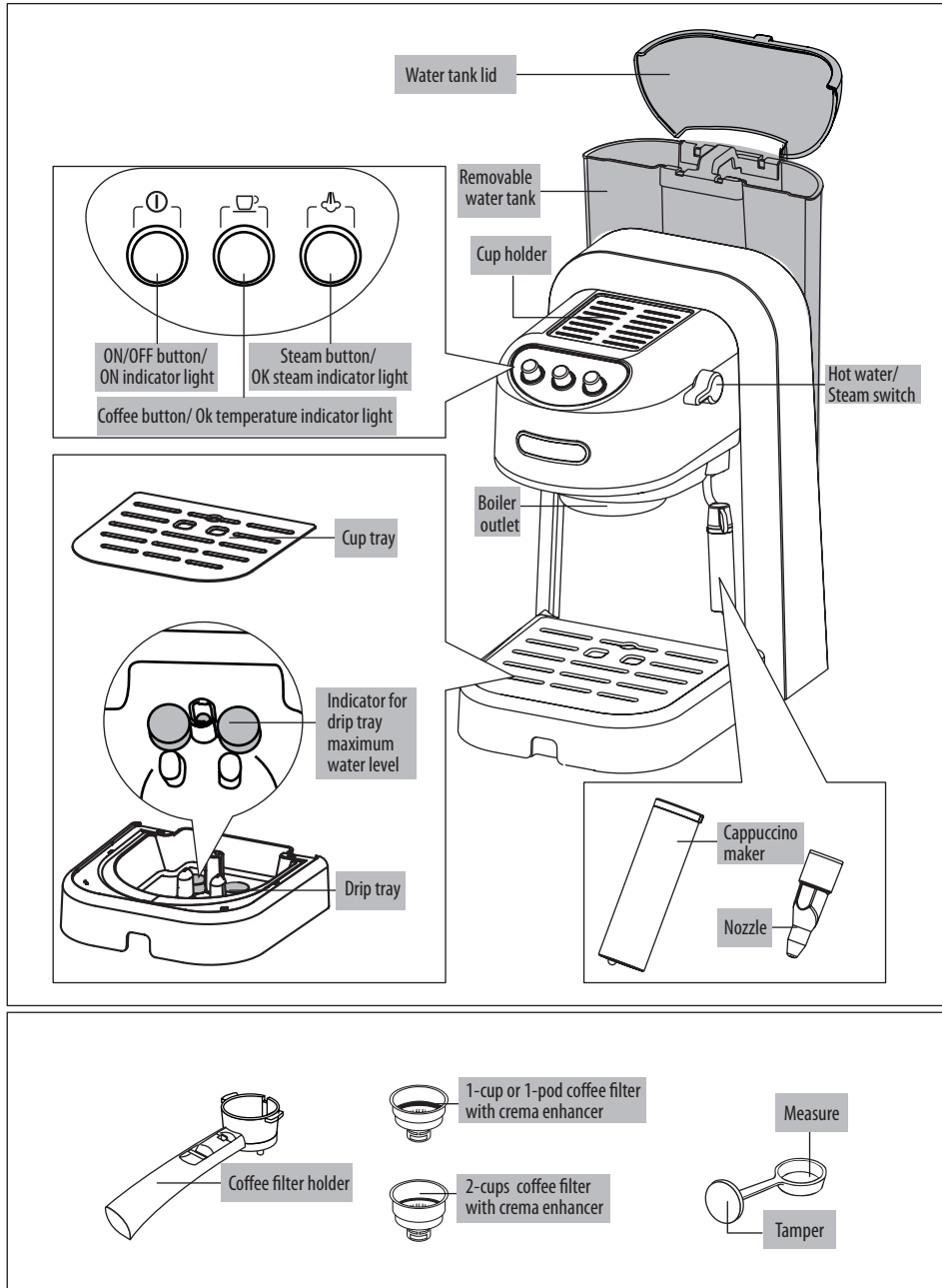
After replacement of a fuse in the plug, the fuse cover must be refitted. If the fuse cover is lost, the plug must not be used until a replacement cover is obtained. The colour of the correct replacement fuse cover is that of the coloured insert in the base of the fuse recess or elsewhere on the plug. Always state this colour when ordering a replacement fuse cover.

Only 13amp replacement fuses which are approved to B.S. 1362 should be fitted.




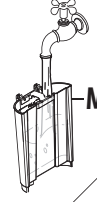

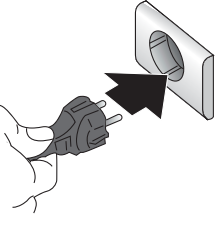
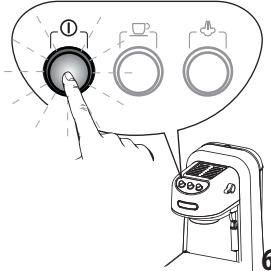

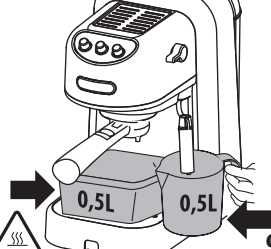
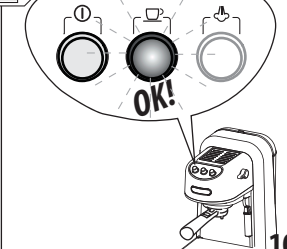
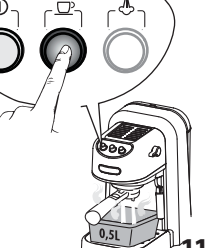
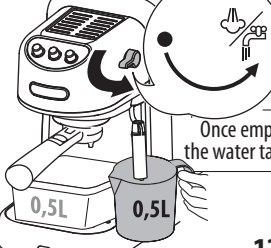
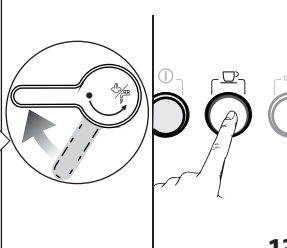
This appliance conforms to the Norms EN 55014 regarding the suppression of radio interference.

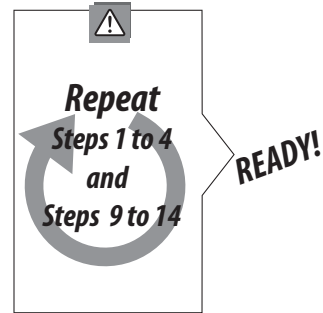
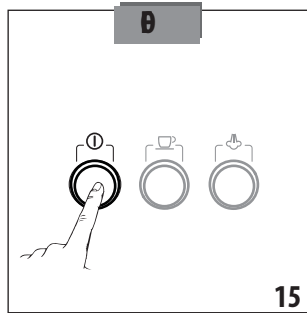
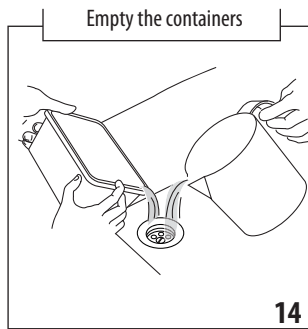
**Warning - this appliance must be earthed**

# Description

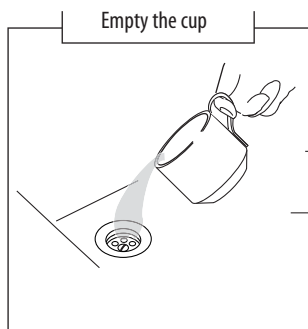
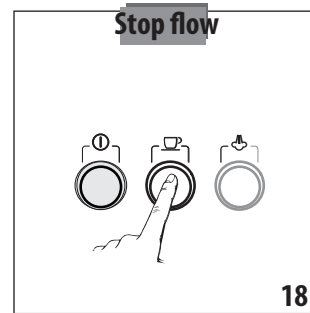
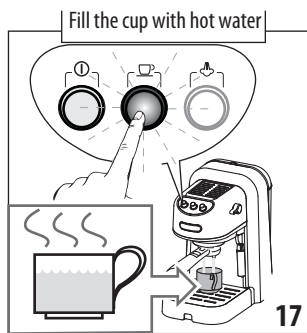


# First use

	Open the lid and remove the water tank		Fill the tank (do not pass the MAX level)	
	 <p>1</p>	 <p>2</p>	 <p>3</p>	 <p>4</p> <p>Reposition the tank</p>
<b>O N / O F F</b>	Plug the appliance in		Switch the appliance on	
	 <p>5</p>	 <p>6</p>	Insert the empty filter	
	Attach the filter holder	Place 2 empty containers		Wait until light comes on
 <p>8</p>	 <p>9</p>	 <p>10</p>		
Push the button		Turn the switch		<b>STOP</b>
 <p>11</p>		 <p>12</p> <p>Once emptied the water tank...</p>		 <p>13</p>



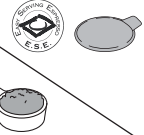





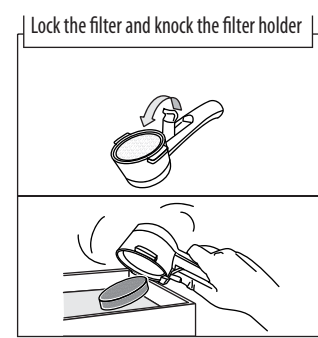
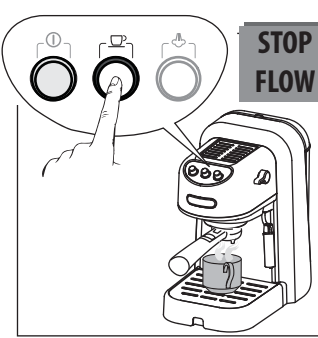
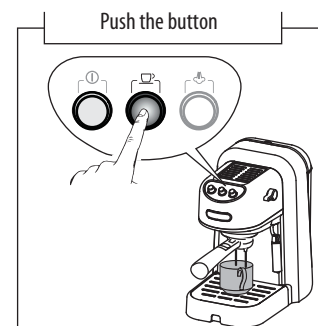
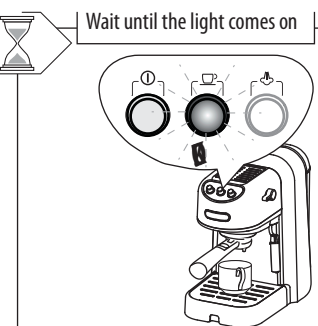
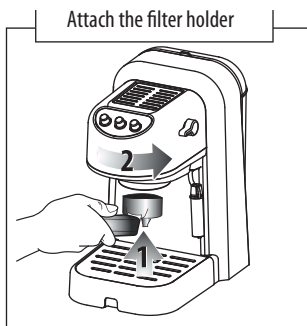
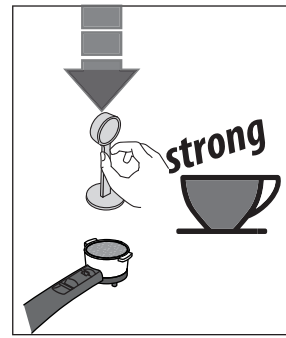
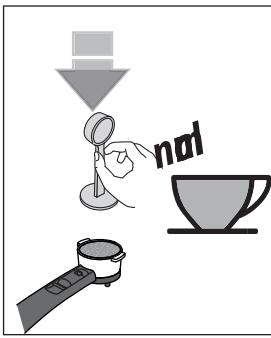
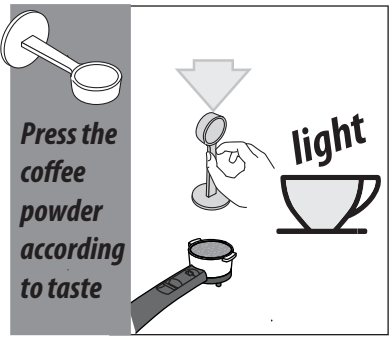
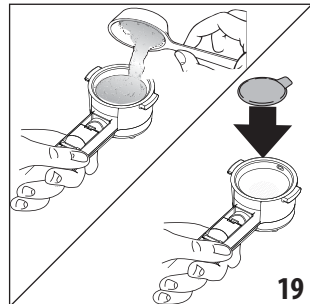
## Pre-heating the coffee machine and cup



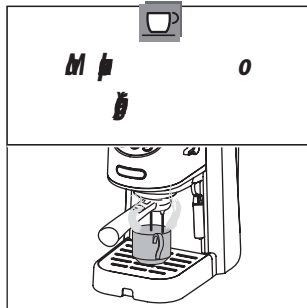
Place the required filter in the filter holder, then proceed with making an espresso (page 6)

# Espresso

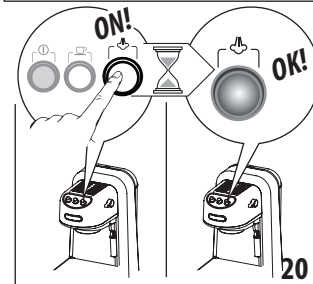
If you want	filter to use	coffee quantity
<b>1 Espresso</b> 	1-cup/ 1-pod coffee filter 	
<b>Espresso s</b> 	2-cups coffee filter 	 x2



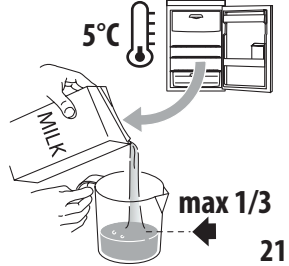
# Cappuccino



Push the button and wait for the light to come on

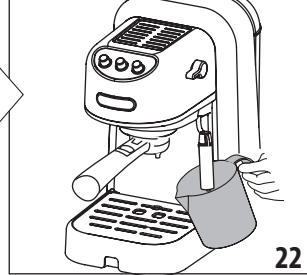


It is recommended to use semi-skimmed milk at refrigerator temperature.

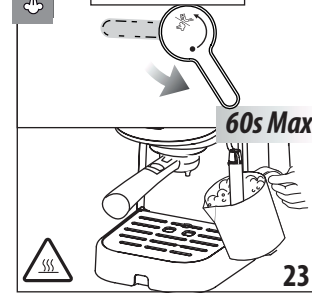


Use about 100 grams of milk for every cappuccino to be prepared. When choosing the container bear in mind that the volume of the milk will increase by 2 or 3 times.

Position the container under the cappuccino nozzle

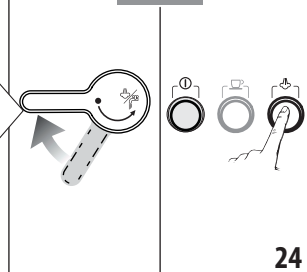


Open the steam switch



To obtain a creamier froth, dip the cappuccino nozzle into the milk and turn the container with slow movements from the bottom upwards. When the volume of the milk has doubled, dip the cappuccino nozzle deep down and continue to heat the milk.

**STOP**



Pour the frothed milk into the cups containing the previously prepared espresso coffee.



**Cappuccino Ready!**



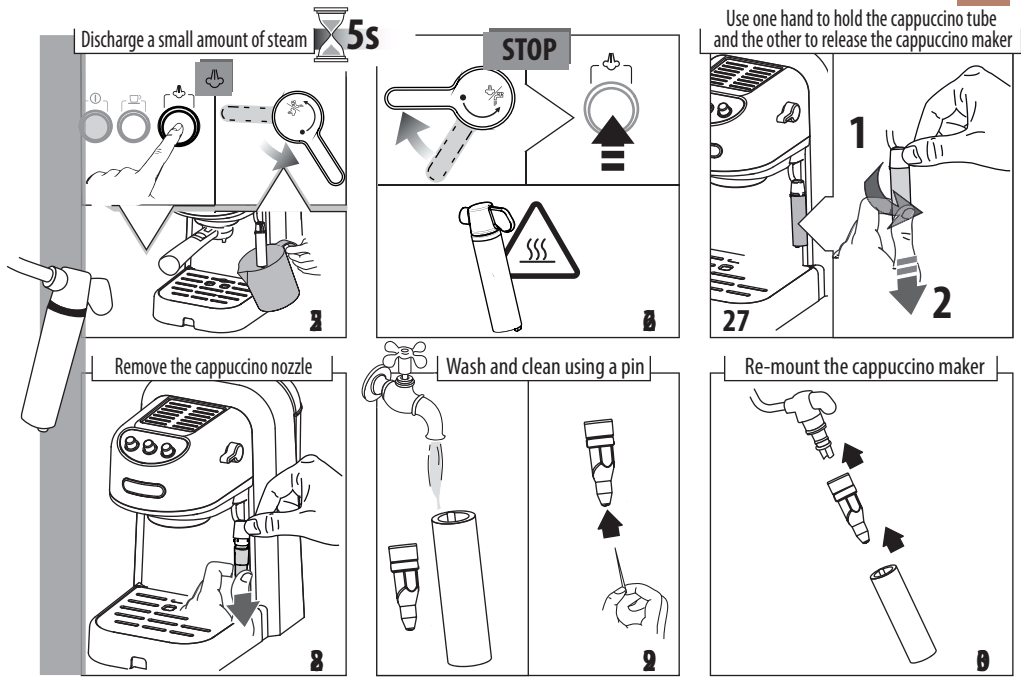
For hygiene purposes always clean the cappuccino nozzle after each use



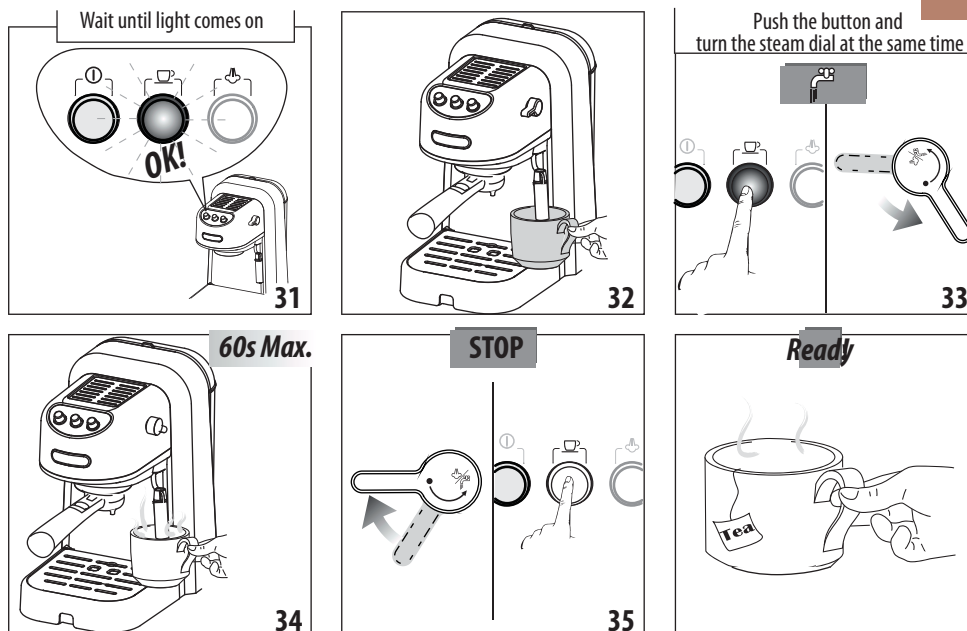
**Cleaning (page 8)**



## Cleaning after making a Cappuccino



## Hot Water



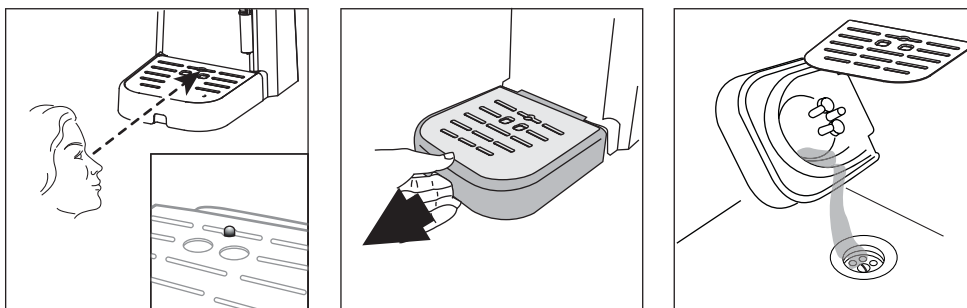
# Cleaning



During cleaning, never immerse the machine in water: it is an electrical appliance.  
Before performing any cleaning operations to the external parts of the appliance, switch the machine off, remove the plug from the socket and let the machine cool down.

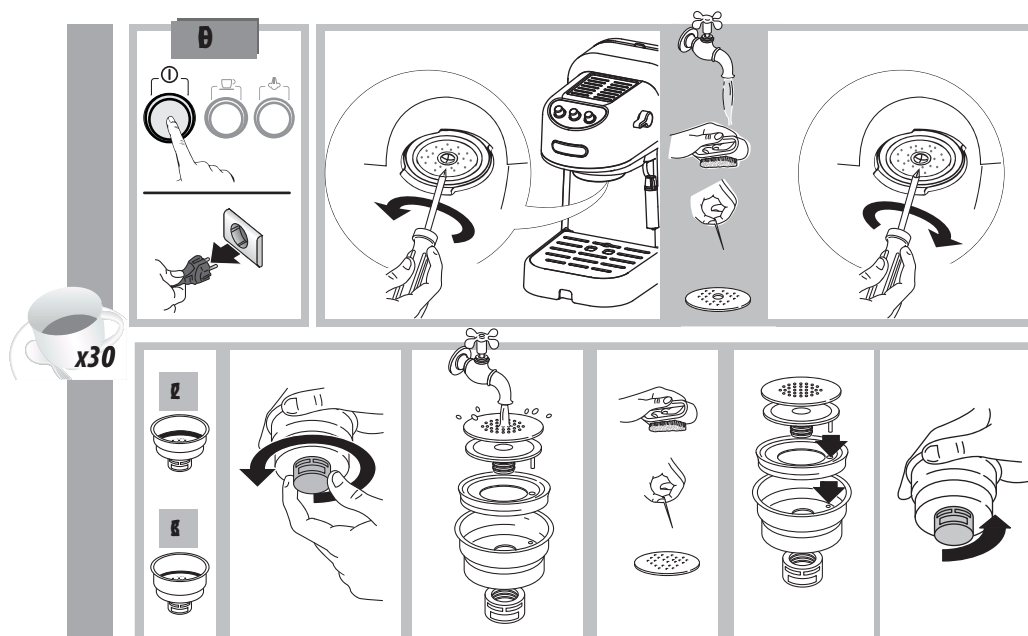
## Emptying the drip tray

The drip tray is fitted with a level indicator showing the level of water it contains.  
Before the indicator protrudes from the cup tray, the drip tray must be emptied and cleaned.

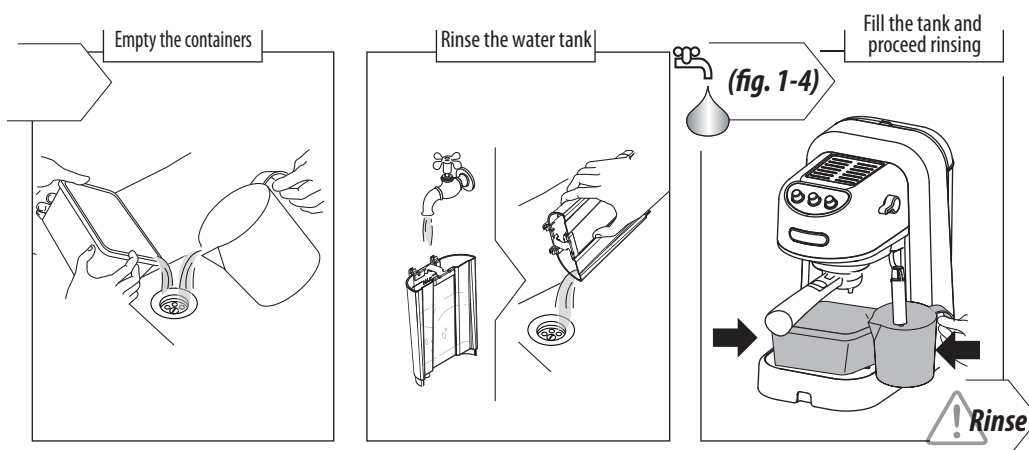
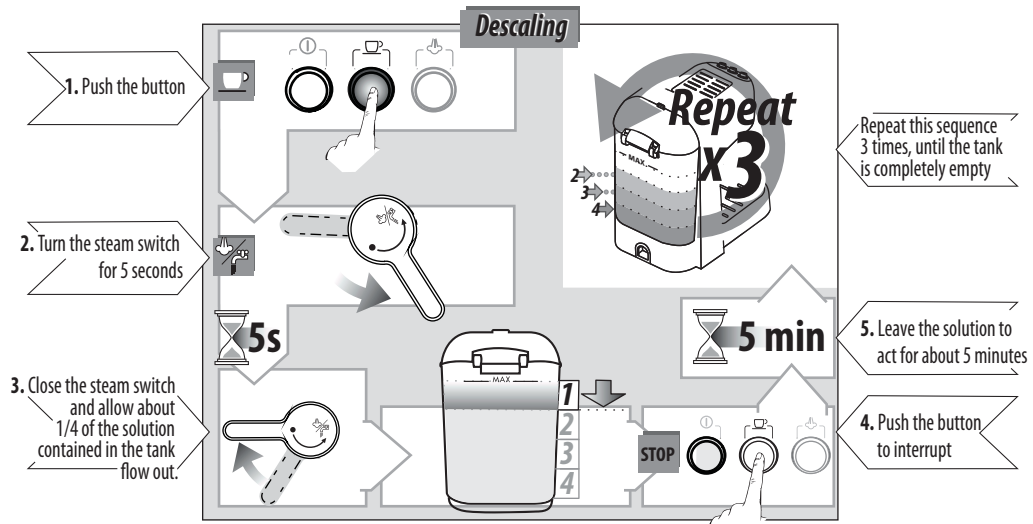
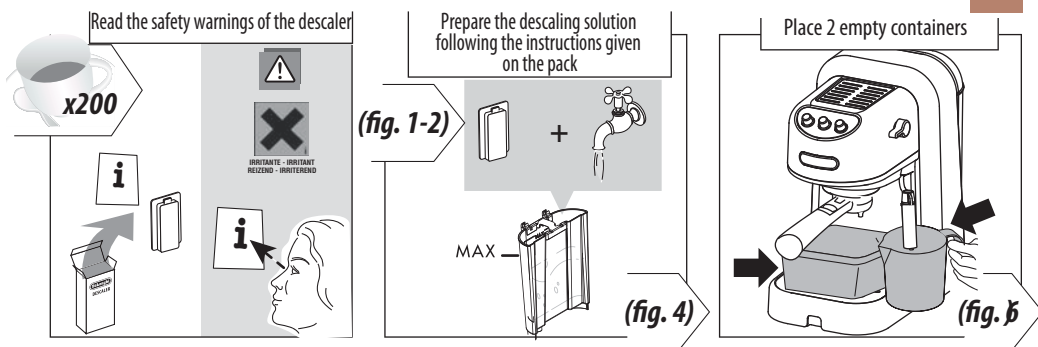


## Cleaning filters and boiler outlet

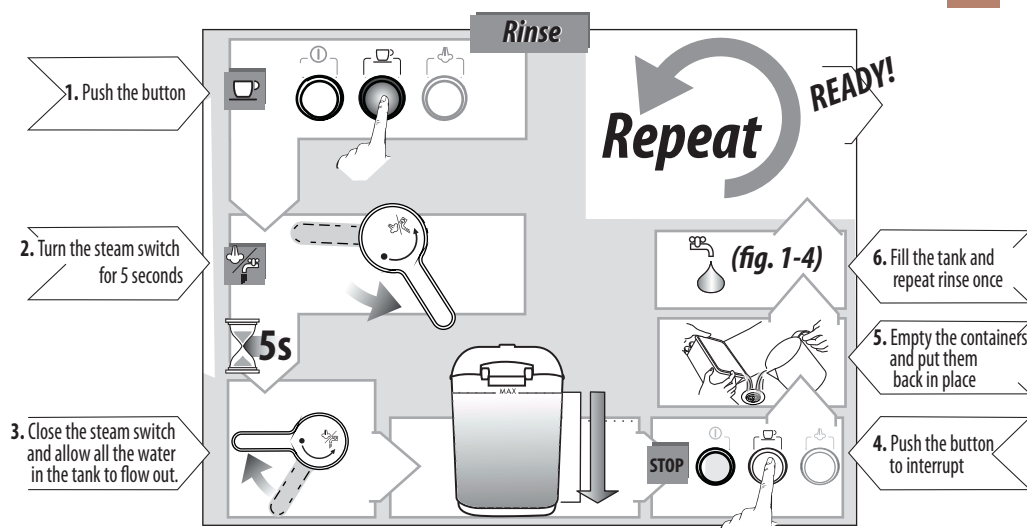
Clean the filter-holder, ground coffee filter and boiler outlet about every 300 coffees or if the coffee drips through the filter-holder and does not flow unrestricted.



## Descaling and Rinse



## Descaling and Rinse



## Technical data - Disposal

### Technical data

Mains voltage:	220-240V-50/60Hz
Absorbed power:	1100W
Sizes LxHxD:	208x325x305 (380) mm
Pressure:	15 bar
Water tank capacity:	1 L
Power supply cable length:	1.2 m
Weight:	3.8 kg



The appliance is in compliance with the following CE Directives:

- Stand-by Directive 1275/2008
- Low voltage Directive 2006/95/CE and successive amendments;
- EMC Directive 2004/108/CE and successive amendments;
- The materials and items intended for contact with food comply with the requirements of European Regulation 1935/2004.

### Disposal



Recommendations for the correct disposal of the product in compliance with the 2002/96/EC European Directive and Legislative Decree n. 151 dated 25 July 2005. The product must not be disposed of as urban waste at the end of its working life. It must be taken to appropriate local authority separate waste collection centres or to dealers providing this service. Disposing of a household appliance separately avoids possible negative consequences for the environment and health deriving from unsuitable disposal and allows to recover the materials of which it is made in order to make significant savings of energy and resources. The product has the crossed-out wheeled bin mark as a reminder of the obligation to dispose of household appliances separately. The illegal disposal of the product by the user entails the application of administrative sanctions envisioned by the Standard in force.

## Troubleshooting

Problem	Possible causes	Solution
Espresso coffee does not flow out	There is no water in the tank	Fill the water tank
	The holes in the filter-holder are blocked	Clean the holes in the filter-holder spouts
	The espresso boiler outlet is blocked	Clean as indicated in the "Cleaning" paragraph
Espresso coffee drips from the edges of the filter-holder instead of through the holes	The filter-holder is not correctly inserted or is dirty	Attach the filter-holder correctly and turn it fully until it is firmly engaged
	The espresso boiler gasket has lost elasticity or it is dirty	Contact De'Longhi Customer Experience in order to replace the espresso boiler gasket
	The holes in the filter-holder spout are blocked	Clean the holes in the filter-holder spouts
Loud pump noise	At first use there is air in the system	Carry out the "first use" cycle (see page 4)
	The water tank is empty	Fill the tank
	The tank is inserted incorrectly and the valve on the bottom is not open	Press the tank lightly to open the valve on the bottom
The coffee crema is dark (coffee flows slowly from the spout)	The ground coffee is pressed too tightly	Tamper the coffee less
	There is too much ground coffee	Reduce the amount of ground coffee
	The espresso boiler outlet is blocked	Clean as indicated in the "Cleaning" paragraph
	The filter is blocked	Clean as indicated in the "Cleaning" paragraph
	The coffee is ground too finely	Only use coffee specifically ground for espresso coffee machines
	The ground coffee is too fine or is moist	Only use coffee specifically ground for espresso coffee machines. The coffee should not be moist
The coffee has an acidic flavour	Coffee is too strong	See notes above
	Rinsing after descaling was not sufficient	Repeat rinsing (see page 11)
The espresso coffee is cold	The ☐ light is not on when the button is pressed	Wait for the light to switch on
	Pre-heating has not been carried out	See page 5.
The milk does not froth when making a cappuccino	The milk is not cold enough	Always use milk at fridge temperature
	The cappuccino maker is dirty	Thoroughly clean the holes of the cappuccino maker

## Safety warnings

### Symbols used in these instructions

The important recommendations have these symbols. These recommendations must be followed.



#### **Danger!**

Failure to comply can be or is the cause of injury due to life-threatening electric shocks.



#### **Important!**

Failure to comply can be or is cause of injury or damage to the appliance.



#### **Scalding hazard!**

Failure to comply can be or is the cause of scalding or burns.



#### **Please note:**

This symbol highlights recommendations and important information for the user.

### Fundamental recommendations regarding safety



#### **Danger!**

As the appliance operates using electricity, electric shocks can not be excluded.

Therefore, follow the safety recommendations given:

- Do not touch the appliance when you have wet hands or feet.
- Do not touch the plug with wet hands.
- Make sure that the socket used can always be easily reached, so that the plug can be removed when required.
- Remove the plug from the socket by acting directly on the plug itself. Do not pull the cable as damage could be caused.
- Remove the plug from the socket to disconnect the appliance completely.
- Do not attempt to repair the appliance if it should breakdown. Turn it off, unplug from the mains socket and contact the Technical Assistance service.
- If the plug or power supply cable are damaged, have them replaced exclusively by the De'Longhi After-Sales Service, in order to prevent risks
- During cleaning, never immerse the machine in water: it is an electrical appliance.
- Before performing any cleaning operations of the external parts of the appliance, switch the machine off, remove the plug from the socket and let the machine cool down.



#### **Important:**

Keep the packaging material (plastic bags, expanded polystyrene) out of the reach of children.



#### **Important:**

Do not allow the appliance to be used by persons (also children) with reduced psycho-physical-sensorial capacities or that have insufficient experience and knowledge, unless they are carefully monitored and trained by a person responsible for their safety. Watch children, do not let them play with the appliance.



#### **Scalding hazard!**

This appliance produces hot water and steam may form when it is operating.

Pay attention not to come into contact with hot water sprays or steam.

Do not touch the cup holder, the frothing tube, or the boiler outlet when the appliance is on because it is hot.

### Use in compliance with intended use

This appliance is designed and made to prepare coffee and heat drinks. All other use is considered improper. This appliance is not suitable for commercial use. The manufacturer is not liable for damage deriving from improper use of the appliance. This is an household appliance only. It is not intended to be used in:

- staff kitchen areas in shops, offices and other working environments;
- farm houses;
- by clients in hotels, motels and other residential type environments;
- bed and breakfast type environments.

Use in this manner will invalidate the manufacturers warranty.

### Instructions for use

Read these instructions carefully before using the appliances. Failure to comply with these instructions can lead to injury to persons and damage to the machine.

The manufacturer is not liable for damage deriving from the failure to comply with the user instructions.



#### **Please note:**

Keep these instructions carefully. If the appliance should be transferred to other persons, these instructions must accompany it.



#### **Please note: first use**

Upon first use, rinse the internal ducts of the device, and operate the device like one would to make coffee until at least one water tank has been emptied; then proceed with making coffee.

## Free Manuals Download Website

<http://myh66.com>

<http://usermanuals.us>

<http://www.somanuals.com>

<http://www.4manuals.cc>

<http://www.manual-lib.com>

<http://www.404manual.com>

<http://www.luxmanual.com>

<http://aubethermostatmanual.com>

Golf course search by state

<http://golfingnear.com>

Email search by domain

<http://emailbydomain.com>

Auto manuals search

<http://auto.somanuals.com>

TV manuals search

<http://tv.somanuals.com>