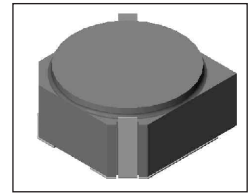


SMT Power Inductor

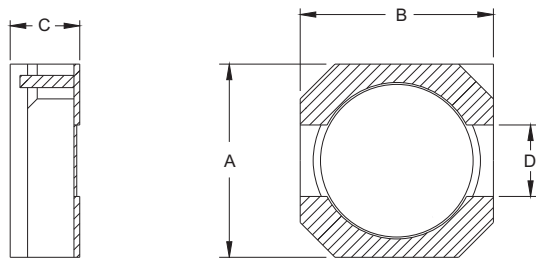
SIL730 Type

Features

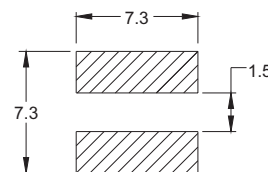
- RoHS compliant.
- Small size (6.6mm*6.6mm), Low profile (3.0mm max. height) SMD type.
- Magnetically shielded, suitable for high density mounting.
- High energy storage and low DCR.
- Provided with embossed carrier tape packing.
- Ideal for power source circuits, DC-DC converter, DC-AC inverters inductor application.
- In addition to the standard versions shown here, customized inductors are available to meet your exact requirements.



Mechanical Dimension:



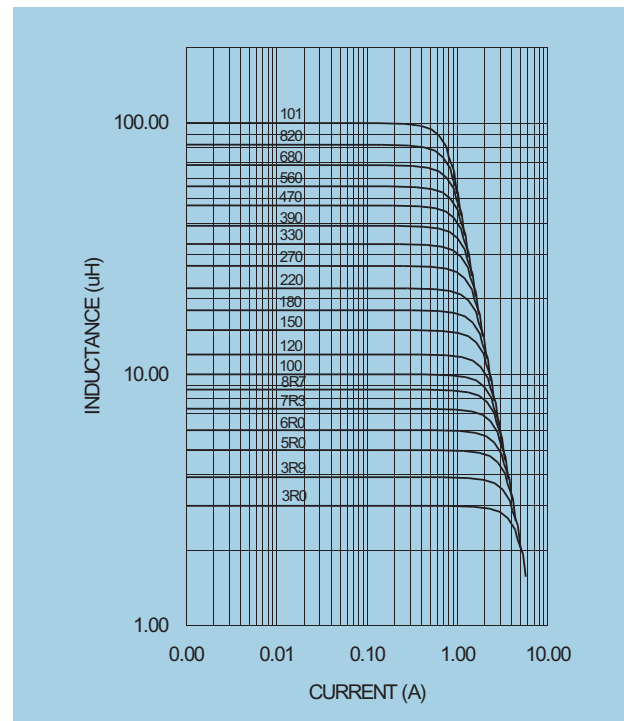
RECOMMENDED PAD PATTERNS



UNIT:mm/inch
 A = 7.0 / 0.276 Max.
 B = 7.0 / 0.276 Max.
 C = 3.0 / 0.118 Max.
 D = 2.0±0.1 / 0.079±0.004

Electrical Characteristics: 25°C: 100KHz, 0.1V

PART NO.	L ¹ (μH)	DCR (Ω) MAX	I _{rated} ² (A dc)
SIL730 - 1R0	1.0	0.010	5.60
SIL730A - 1R0	1.0	0.010	6.00
SIL730 - 1R5	1.5	0.018	4.20
SIL730A - 2R2	2.2	0.028	5.00
SIL730 - 3R0	3.0	0.024	3.00
SIL730C - 3R3	3.3	0.038	4.80
SIL730A - 3R6	3.6	0.028	4.00
SIL730 - 3R9	3.9	0.027	2.60
SIL730A - 4R7	4.7	0.040	3.60
SIL730C - 4R7	4.7	0.043	4.00
SIL730 - 5R0	5.0	0.031	2.40
SIL730 - 6R0	6.0	0.035	2.25
SIL730A - 6R6	6.6	0.054	3.00
SIL730 - 7R3	7.3	0.054	2.10
SIL730 - 8R6	8.6	0.058	1.85
SIL730 - 100	10.0	0.065	1.70
SIL730 - 120	12.0	0.070	1.55
SIL730 - 150	15.0	0.084	1.40
SIL730 - 180	18.0	0.095	1.32
SIL730 - 220	22.0	0.128	1.20
SIL730 - 270	27.0	0.142	1.05
SIL730 - 330	33.0	0.165	0.97
SIL730A - 330	33.0	0.172	1.30
SIL730 - 390	39.0	0.210	0.86
SIL730 - 470	47.0	0.238	0.80
SIL730A - 470	47.0	0.280	1.10
SIL730 - 560	56.0	0.277	0.73
SIL730 - 680	68.0	0.304	0.65
SIL730 - 820	82.0	0.390	0.60
SIL730 - 101	100.0	0.535	0.54



1. Tolerance of inductance : ± 30%.
2. I_{rated} is the DC current which cause the inductance drop less than 35% of its nominal inductance without current and the surface temperature of the part increase less than 45°C.
3. Operating temperature: -20°C to 105°C (including self-temperature rise).



DELTA ELECTRONICS, INC.

(TAOYUAN PLANT CPBG) 252, SAN YING ROAD, KUEISAN INDUSTRIAL ZONE, TAOYUAN SHIEN, 333, TAIWAN, R.O.C.

TEL: 886-3-3591968; FAX: 886-3-3591991

<http://www.deltawww.com>

Free Manuals Download Website

<http://myh66.com>

<http://usermanuals.us>

<http://www.somanuals.com>

<http://www.4manuals.cc>

<http://www.manual-lib.com>

<http://www.404manual.com>

<http://www.luxmanual.com>

<http://aubethermostatmanual.com>

Golf course search by state

<http://golfingnear.com>

Email search by domain

<http://emailbydomain.com>

Auto manuals search

<http://auto.somanuals.com>

TV manuals search

<http://tv.somanuals.com>