



DIAMOND

D3

AMPLIFIER INSTALLATION MANUAL

D3 400.2 | D3 500.4 | D3 600.1 | D3 1100.1

Congratulations!

Thank you for choosing a Diamond Audio Technologies D3 Series amplifier. We sincerely believe that DAT products offer you outstanding performance and value. DAT products are engineered and produced with the highest quality materials and incorporate the latest technology. We think you will find your new DAT amplifier meets or exceeds your expectations and provides excellent value.

Properly installed, your new DAT D3 Series amplifier will provide years of high quality sonic reproduction. Before installing the DAT amplifier in your vehicle, please read the entire manual carefully. It is required reading for the protection of your vehicle and for the maximum performance of your mobile audio system. All DAT amplifiers have been extensively tested and "burned-in" for maximum reliability. If after reading this manual, you still have questions regarding this product, we recommend that you contact your authorized DAT dealer for expert installation assistance.

If you need assistance with repair or warranty, detailed warranty and return/repair information is listed in the back of this manual. Be sure you record your serial number, model number and date of purchase for your DAT amplifier as this will be necessary for any returns.

Please Practice Safe Sound!

Continuous exposure to sound pressure levels over 100 dB may cause permanent hearing loss. High powered mobile audio systems may produce sound pressure levels well over 130dB. Use common sense and practice safe sound.

All Diamond Audio D3 Series Amplifiers Feature:

- Pulse Width Modulated (PWM) MOSFET Switching Power Supply
 - Extruded Aluminum Heatsink
 - Double sided PC boards
 - Nickel Plated RCA Low Level Audio Inputs
- Nickel plated, low resistance power and speaker connector blocks
 - Power ON and Protection LED Lighting for Easy Diagnostics
- Thermal, Short Circuit, and Overload (Low Impedance) Protection
 - 12 dB bass boost
 - Chassis mounted ATC/ATO type automotive fuses
 - Proudly Designed and Engineered in the USA

D3 400.2 / D3 500.4 Features

- Class AB Amplifier Topology
 - Bridgeable Output Capability (4 Ohms)
- Stereo/Mono Mix Capability (Hybrid 3rd channel from 2 channels)
 - Stable into 2 Ohm Stereo Loads
- Internal 12dB/Octave High Pass or Low Pass Filter (40-400Hz)
 - Pass-Thru Line Output for Daisy Chaining Amplifiers
 - Versatile for either full range or subwoofers

D3 600.1 / D3 1100.1 Features

- Class D Mono Amplifier Topology- D3 1100.1
- Class AB Amplifier Topology - D3 600.1
- High Current Output Capability (2 or 1 Ohm)
- Internal 12dB/Octave Low Pass Filter (D3 1100.1 50-250Hz; D3 600.1 30-250Hz)
 - Bass Boost EQ (0 to +12dB) at 50Hz
- Remote Level Control for Dash Mounting
 - Intended for use on subwoofers

Frequency Response: 20Hz to 20KHz +/-3 dB
Signal to Noise Ratio: >95dBA (20 to 20kHz)
Channel Separation: 50dB
THD+N(Total Harmonic Distortion + Noise) <0.2% (Output-1W 4 Ohms)
RCA Input Sensitivity: 150mV to 4V
RCA Input Impedance: >20K Ohms
Min to Max Voltage requirements: 10.2V to 15.5V DC
High/Low Pass Crossover: 12dB/Oct, 30-500Hz Variable
Crossover Configuration: Switchable (OFF/HP/LP)
Bass EQ: 0 to 12dB @ 50Hz (Variable)

D3 400.2 2-Channel Amplifier

400 Watts RMS Output Power
(All Channels Driven):

(Into 4 Ohms) 100w x 2
(Into 2 Ohms) 200w x 2
(Bridged into 4 Ohms) 400w x 1

Frequency Response: 20Hz to 20KHz +/-3 dB
Signal to Noise Ratio: >90dBA (20 to 20kHz)
Channel Separation: 50dB
THD+N(Total Harmonic Distortion + Noise) <0.2% (Output-1W 4 Ohms)
RCA Input Sensitivity: 150mV to 4V
RCA Input Impedance: >20K Ohms
Min to Max Voltage requirements: 10.2V to 15.5V DC
High/Low Pass Crossover: 12dB/Oct, 40-400 Variable
Crossover Configuration: Switchable (OFF/HP/LP)
Bass EQ: 0 or 12dB @ 50Hz (Selectable)

D3 500.4 4-Channel Amplifier

500 Watts RMS Output Power
(All Channels Driven):

(Into 4 Ohms) 75w x 4
(Into 2 Ohms) 125w x 4
(Bridged into 4 Ohms) 250w x 2

Frequency Response: 20Hz to 20KHz +/-3 dB
Signal to Noise Ratio: >90dBA (20 to 20kHz)
Channel Separation: 50dB
THD+N(Total Harmonic Distortion + Noise) <0.2% (Output-1W 4 Ohms)
RCA Input Sensitivity: 150mV to 4V
RCA Input Impedance: >20K Ohms
Min to Max Voltage requirements: 10.2V to 15.5V DC
Low Pass Crossover: 12dB/Oct, 30-250Hz Variable
Crossover Configuration: Low Pass only
Bass EQ: 0 to 12dB @ 50Hz (Variable)

D3 600.1 Mono Amplifier

600 Watts RMS Output Power
(Single Channel Driven):

(Into 4 Ohms) 250w x 1
(Into 2 Ohms) 400w x 1
(Bridged into 1 Ohms) 600w x 1

Frequency Response: 40Hz to 250Hz +/-3 dB
Signal to Noise Ratio: >70dBA (40 to 250Hz)
THD+N(Total Harmonic Distortion + Noise) <0.2% (Output-1W 4 Ohms)
RCA Input Sensitivity: 150mV to 4V
RCA Input Impedance: >20K Ohms
Min to Max Voltage requirements: 11V to 15.5V DC
Low Pass Crossover: 12dB/Oct, 50-250Hz Variable
Crossover Configuration: Low Pass
Bass EQ: 0 to 12dB @ 50Hz (Variable)

D3 1100.1 Mono Amplifier

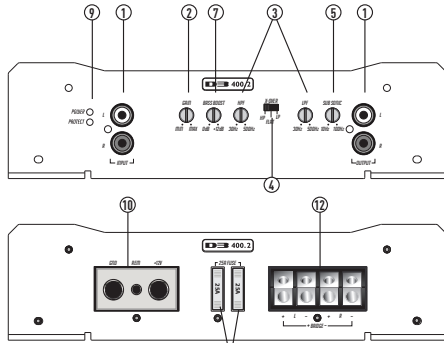
1100 Watts RMS Output Power
(Single Channel Driven):

(Into 4 Ohms) 450w x 1
(Into 2 Ohms) 800w x 1
(Bridged into 1 Ohms) 1100w x 1

Connections and Controls

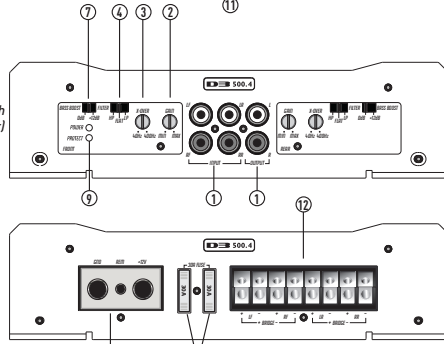
This section describes how all of the terminals and adjustments of DAT D3 Series amplifiers function.

D3 400.2
2-Channel Amplifier

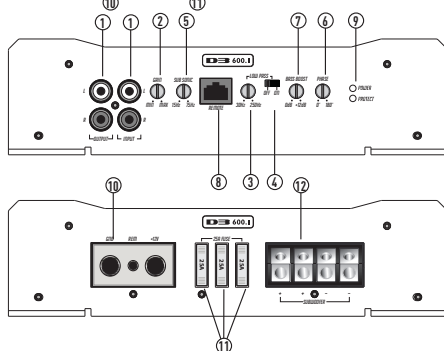


These Functions are Identical for Each Pair of Channels (Front and Rear)

D3 500.4
4-Channel Amplifier

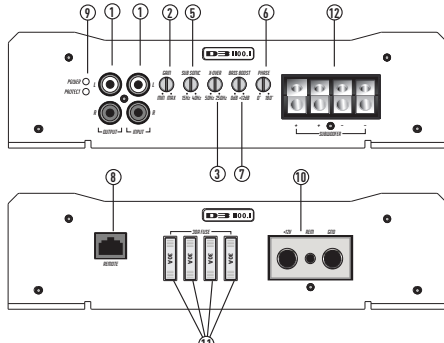


D3 600.1
Mono Amplifier



4 gauge power and ground wiring is recommended for all D3 amplifiers

D3 1100.1
Mono Amplifier



- ① **RCA Input and Pass-Thru Output** - These RCA jacks allow for a normal Left and Right channel signal input. Simply connect to the source unit using RCA type audio cables, keeping them away from power wiring wherever possible. On the 4 channel amplifiers (D3 500.4) "Front" and "Rear" input jacks are present as well as a "Pass-Thru" output allows the signal to pass on to other amplifiers. The Pass-Thru output is unaffected by the onboard crossover.
- ② **Input Gain Adjustment** - This control matches the preamp stage of the DAT amplifier to your source unit. This is NOT a volume control. The range is between 150mV and 4V.
- ③ **Crossover Adjustment**- Use this adjustment to select the crossover point. Remember that your choice will be directed to High Pass or Low Pass depending upon the position of the adjacent switch. The range of adjustment is limited between 30-500 Hz (D3 400.2), 40-400 Hz (D3 500.4) and 30-250Hz(D3 600.1) , 50-250Hz (D3 1100.1)
- ④ **Crossover Selection Switch** - This switch allows you to select the crossover. Use High Pass for midrange or high frequency speakers. Use Low Pass for subwoofers. In the OFF position, the crossover adjustment knob has no effect. The D3 600.1 and the D3 1100.1 are only available as Low Pass.
- ⑤ **Sub-Sonic Adjustment** - This control allows you to adjust the "pass-band" for a true 3 way speaker system. This helps solve "standing wave" problems in-car (boomy bass), AND protects midrange/mid-bass drivers at the same time. The D3 400.2 is 10-100 Hz, D3 600.1 is 15-75Hz and the D3 1100.1 has an adjustment from 15-40Hz
- ⑥ **Phase Adjustment (D3 600.1/D3 1100.1 Only)** - This control allows you to adjust the "phase" so as to align the subwoofer in "time" to the mids and tweeters. 0 to 180 degrees of adjustment capability. This is EXTREMELY useful to get the best and MOST bass out of your system.
- ⑦ **Bass Boost** - This control adds 0 to +12dB of boost at 50Hz. Be cautious when adding boost to some subwoofer systems as they may not be able to handle the additional low frequency boost. In the OFF position, no bass boost is added.
- ⑧ **Remote Level Adjustment (D3 600.1/D3 1100.1 Only)** - This port is for the remote level control (included). The control is intended to allow the user to control the level of gain up to the maximum adjustment level set on the amplifier. The control does not add additional boost, it only attenuates the setting that is fixed at the amplifier's control panel.
- ⑨ **Status LED's** - These lights indicate when the amplifier is powered up normally and when there is a protection fault. See the "Troubleshooting" section for details on what these useful indicators can tell you if there's a problem.
- ⑩ **Power Input Connections** - These connections are for input power, chassis ground, and remote turn-on. Use a minimum of 4 gauge wiring for power and ground connections. The terminals will handle up to 4 gauge wiring with no problem whatsoever. Be sure any wiring that passes through metal has a grommet!
- ⑪ **Power Fuses** - Standard automotive type ATC/ATO fuses are used on DAT D3 Series Amplifiers. Always replace with the correct fuse size. Never insert fuses of higher values. Doing so will void the warranty of your DAT amplifier. Also include a main fuse at the connection to the vehicle battery within 18 inches (45.7 mm) of the positive battery post. It is also important to upgrade the connection between the negative battery post and the chassis of the vehicle. This greatly reduces possibilities of weak electrical "links" in the circuit.
- ⑫ **Speaker Output Terminals** - Connect your speakers to these terminals. Stereo connections are connected as labeled. Bridged connections use the LEFT + and RIGHT - as the two connections. The 2 and 4 channel amplifiers will perform into 2 Ohm stereo loads or 4 Ohm bridged loads. DO NOT run 2 Ohm bridged loads on these amplifiers! The D3 600.1 and the D3 1100.1 are the only amplifier's in the D3 Series capable of less than a 2 Ohm load (D3 600.1/D3 1100.1 are capable of driving a load as low as 1 Ohm.)

Installation Guidelines

Tools and Supplies

Listed below are the tools and supplies needed to complete this installation:

- Volt/Ohm Meter
- Wire strippers and wire cutters
- #2 Phillips screwdriver
- Battery post wrench
- Hand held drill w/assorted bits
- High quality electrical tape or heatshrink tubing
- Soldering iron and solder or assorted crimp connectors
- Adequate Length— Power Wire (minimum 4 gauge recommended)
- Adequate Length— Ground Wire (minimum 4 gauge recommended)
- Adequate Length—Remote Turn-on Wire (minimum 22 gauge)

The Importance of Pre-Planning

This section focuses on some of the considerations for installing your new D3 amplifier. Pre-planning your audio system layout and best wiring routes will save installation time. When deciding on the layout of your new components, be sure that each component will be easily accessible for making adjustments.

CAUTION: If you feel unsure about installing this system yourself, have it installed by a qualified technician.

CAUTION: Before installation, disconnect the negative [-] battery terminal to prevent damage to the unit, fire and/or possible injury.

Before beginning any installation, follow these sensible guidelines:

- 1) Be sure to carefully read and understand the instructions before attempting to install the amplifier. The instructions can only help you make the installation successful.
- 2) For safety, disconnect the negative lead from the battery prior to beginning the installation. It will keep any unintended short circuits from damaging vehicle electronics during installation of the amplifier.
- 3) For easier assembly, run all wires prior to mounting your amplifier in place.
- 4) Route all of the RCA cables close together and away from any high current wires or vehicle computers. This will greatly minimize the chances of unwanted noise.
- 5) Use high quality connectors for a reliable installation and to minimize signal or power loss.
- 6) Think before you drill! Be careful not to cut or drill into gas tanks, fuel lines, brake or hydraulic lines, vacuum lines, or electrical wiring when working on any vehicle.
- 7) Never run wires underneath the vehicle. Running the wires inside the vehicle provides the best protection.
- 8) Avoid running wires over or through sharp edges. ALWAYS use rubber or plastic grommets to protect any wires routed through metal, especially the firewall.
- 9) ALWAYS protect the battery and electrical system from damage with proper fusing. Install the appropriate fuse holder and fuse on the +12V power wire within 18 inches (45.7 mm) of the positive battery terminal. This is for protection of the wire running through the vehicle.
- 10) When grounding to the chassis of the vehicle, scrape all paint from the metal to ensure a good, clean ground connection. Grounding connections should be as short as possible, yet be adequately connected to metal that is welded to the main body, or chassis of the vehicle. Do not use seat bolts, trunk hinges, or poorly joined metal for grounding points.

Mounting Locations

Engine Compartment

Never mount this unit in the engine compartment. Mounting the unit in the engine compartment will void your warranty.

Trunk Mounting

Mounting the amplifier vertically will provide adequate cooling of the amplifier. If you will be mounting it to an existing panel, be sure it's not prone to excessive vibration (such as mounting to the back of a subwoofer enclosure). Excess vibration is not recommended for electronic products, amplifiers included. Mounting the amplifier flat on the floor of the trunk will provide the best cooling, however be cautious not to deposit baggage and other items over the top of the amplifier. Mounting the amplifier upside down to the rear deck of the trunk will NOT provide adequate heat dissipation and will severely affect the performance of the amplifier and is not recommended.

Passenger Compartment Mounting

Mounting the amplifier in the passenger compartment will work as long as you provide a sufficient amount of air for the amplifier to cool itself. If you are going to mount the amplifier under the seat of the vehicle, you must have at least 1 inch (2.54cm) of air gap around the amplifier's heatsink. Mounting the amplifier with less than 1 inch (2.54cm) of air gap around the amplifier's heatsink in the passenger compartment will not provide proper cooling and will severely affect the performance of the amplifier and is not recommended.

Vehicle Electrical System Requirements

Amplifiers (regardless of brand name) will put an increased load on the vehicle's battery and charging system. DAT recommends checking your alternator and battery condition to ensure that the electrical system has enough capacity to handle the increased load of your stereo system. Original equipment electrical systems which are in good condition should be able to handle the extra load of any DAT amplifier without problems, although battery and alternator life can be reduced depending on your individual listening habits. To maximize the performance of your amplifier, we suggest the use of a reserve power "Stiffening" capacitor.

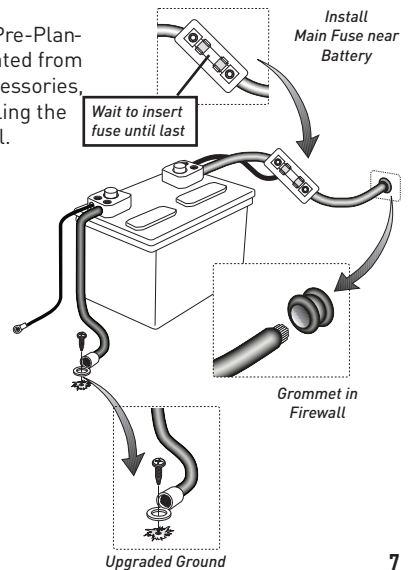
Wiring the Amplifier

CAUTION: Avoid running power wires near the low level input cables, antenna, power leads, sensitive equipment or harnesses. The power wires carry substantial current and could radiate noise into the audio system through the audio cables.

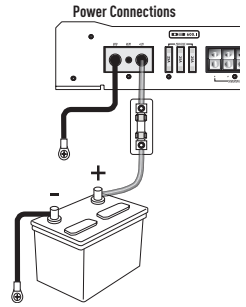
- 1) Plan the wire routing as described in the "Importance of Pre-Planning" section. Keep RCA cables close together but isolated from the amplifier's power cables and any high power auto accessories, especially electric motors. This is done to prevent coupling the noise from radiated electrical fields into the audio signal. When feeding the wires through the firewall or any metal barrier, protect them with plastic or rubber grommets to prevent short circuits. Leave the wires long at this point to adjust for a precise fit at a later time.

- 2) Prepare the power wire for attachment to the amplifier by stripping 5/8 inch (15.9mm) of insulation from the end of the wire. Insert the bare wire into the B+ terminal and tighten the set screw to secure the cable in place.

NOTE: The B+ cable MUST be fused 18" or less from the vehicle's positive battery post. Choose a location to install a waterproof fuseholder under the hood and ensure connections are water tight. If you do not use the appropriate fuseholder, the connection will eventually suffer corrosion from moisture and heat.



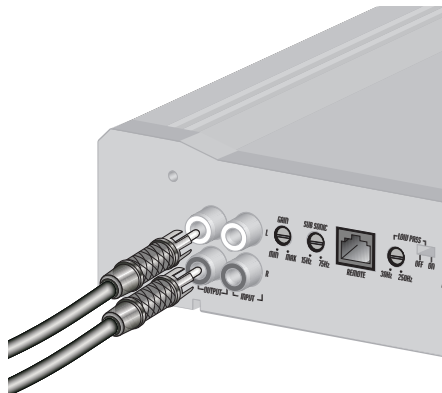
- 3) Trim the power cable within 18 inches (45.7mm) of the positive battery post and splice in a in-line fuse holder. DO NOT install the fuse at this time.
- 4) Strip 1/2 inch (12.7mm) from the battery end of the power cable and crimp a large ring terminal to the cable. Connect the ring terminal to the positive (+) battery post.
- 5) Prepare the ground wire for attachment to the amplifier by stripping 5/8" of insulation from the end of the wire, Insert the bare wire into the GND terminal and tighten the set screw to secure the cable in place. Prepare the chassis ground by scraping any paint from the metal surface and thoroughly clean the area of all dirt and grease. Strip the other end of the wire and attach a ring connector. Fasten the cable to the chassis using a non-anodized screw and a star washer.



NOTE: It is important to upgrade the ground connection between the negative (-) battery post and the vehicle body or chassis to achieve optimum electrical performance.

- 6) Prepare the REM turn-on wire for attachment to the amplifier by stripping 5/8 inch (15.9mm) of insulation from the end of the wire. Insert the bare wire into the REM terminal and tighten the set screw to secure the wire in place. Connect the other end of the REM wire to a switched 12 volt positive source. The switched voltage is usually taken from the source unit's remote amp on lead. If the source unit does not have this output available, the recommended solution is to wire a mechanical switch in line with a 12 volt source to activate the amplifier.
- 7) Securely mount the amplifier to the vehicle or amp rack. Be careful not to mount the amplifier on cardboard or plastic panels. Doing so may enable the screws to pull out from the panel due to road vibration or sudden vehicle stops.
- 8) Connect from source signal by connecting the RCA audio cables to the input jacks at the amplifier or by connecting speaker level signal to RCA audio cables and/or RCA jacks.
- 9) Connect the car speakers. Speakers should be 4 Ohms. If connecting one speaker per channel as shown in the diagrams (except where noted on D3 600.1/D3 1100.1). Strip the speaker wires 1/2" (12.7mm) and insert into the speaker terminal block, then tighten the set screw to secure into place. Be sure to maintain proper speaker polarity. DO NOT chassis ground any of the speaker leads as unstable operation or damage to the amplifier and/or speaker may result.

Audio Input Connections

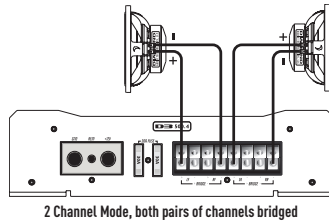
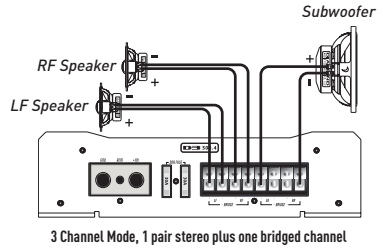
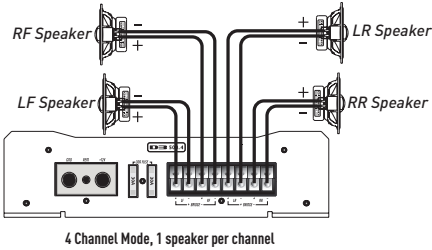


Source Unit Audio Cables Connected to the RCA Inputs

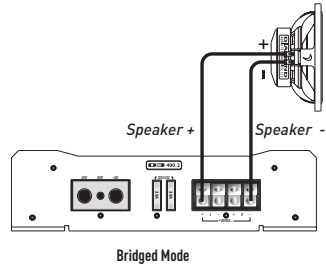
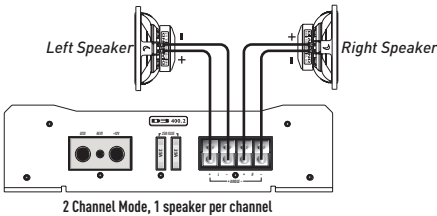
Connecting Multiple Speakers

If you must connect more than one speaker per channel, there are two methods in which to do so: Series or Parallel. Parallel connections are harder on the amplifier than series connections, as the total impedance is lower compared to driving a single speaker, and the amplifier must produce more current to drive them. The following diagrams show "bridged" connections from the amplifier. For more in depth information on series and parallel speaker connections, please visit the DAT website at www.diamondaudio.com

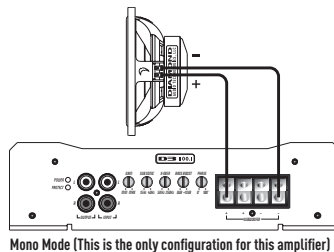
D3 500.4 4-Channel Amplifier



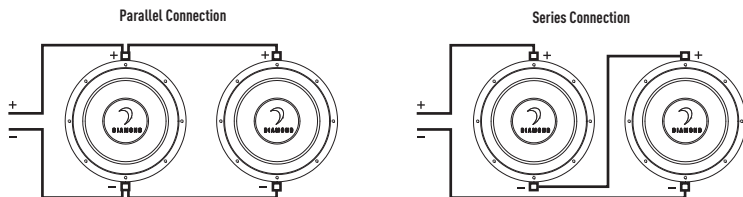
D3 400.2 2-Channel Amplifier



D3 600.1/D3 1100.1 Mono Amplifiers



If you are connecting more than one speaker per channel, please see the next section.

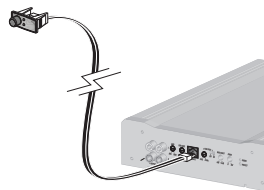


For more wiring options, see the Support section at www.diamondaudio.com.

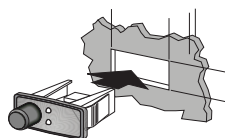
Installing the Remote Level Controller

The D3 600.1 and the D3 1100.1 come packaged with a remote level control. This allows you to control the level by attenuating the amplitude or increasing (up to the maximum set-point) of the amplifier's input gain control. This control does not add additional bass boost, it simply allows you to control the level to suit your tastes.

- 1) Locate a position in the front of the vehicle where this will be easy to reach. Common locations are on, in, or under the dash, in the center console, or in the glove box.
- 2) If you will "surface mount" the unit, attach the bracket using the supplied hardware to your chosen location (See illustration). Proceed to step 4
- 3) If you will be "flush mounting" the unit, you must remove the knob and fascia assembly from the housing first. Then proceed to cut an opening measuring 2" wide (5cm) x 5/8" high (2.2cm). You will need to allow about 1 inch (2.5 cm) of clearance behind the opening for installation and cable access. (See illustration)
- 4) Route the telephone style data cable back to the amplifier location and connect into the remote level port. Test to make sure the operation is functioning.



Connection to Amplifier



In-dash Mount

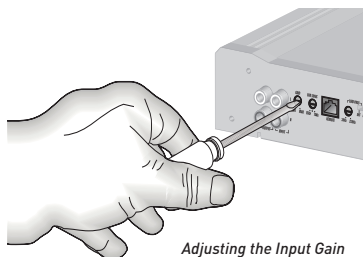
Get Ready to Listen!

Perform a final check of the completed system wiring to ensure that all connections are accurate. Check all power and ground connections for frayed wires and loose connections which could cause problems. Install in-line fuse near battery connection at this time. Prepare to make some adjustments to fine tune your audio system for optimum performance.

Adjustment of Input Gain

To adjust the gain setting, turn the amplifier gains all the way down (counterclockwise). Turn the source unit volume up until distortion is audible and then turn it down a bit until the distortion is inaudible. This will be NEARLY full volume on most source units, perhaps one or two "clicks" down from maximum volume. Next, increase the amplifier gain setting until adequate volume is achieved.

NOTE: Ideal signal to noise and dynamic range are achieved with the gain at minimum. Most users find adequate gain and volume is achieved at about halfway in the adjustment range. Avoid setting the amplifier gain very high as noise and distortion will increase significantly. For a more in depth level setting (gain adjustment) procedure, visit the DAT website at www.diamondaudio.com



Adjusting the Input Gain

Adjustment of Built-In Crossover (All Models)

Placing the switch in the **HP** position sets the amplifier to the **High Pass** mode, enabling frequencies **above** the cutoff point to pass.

Placing the switch in the **LP** position sets the amplifier to the **Low Pass** mode, enabling frequencies **below** the cutoff point to pass.

Placing the switch in the **OFF** position sets the amplifier to **Full Range**, preventing any crossover adjustment. This setting allows ALL frequencies to pass to the speakers. (Not available on D3 600.1/D3 1100.1).

Turn the crossover adjustment knob all the way down. With the system playing, turn the crossover adjustment knob up slowly until the desired crossover point is achieved.

Adjustment of the Bass EQ (Bass Boost) on D3 600.1/D3 1100.1

After setting the input gain adjustment and crossover, you may choose to add a **small amount of “boost”** in the low frequency region. This bass boost adjustment is **FIXED at 45HZ**. Remember that the Bass Boost feature will not fix a poorly designed subwoofer enclosure or subwoofers that didn't sound good to begin with.

- 1] Make sure any **bass boost or low frequency equalization** from the source unit is set to **OFF** or **FLAT**. If you have other outboard signal processors with equalization, you should use those to add boost first and leave the amplifier's bass boost alone.
- 2] While playing the same musical selections used during the gain setting process, slowly increase the level of the Bass EQ. You should be able to notice a demonstrable change between 0 and +6dB. If you do not notice much difference, then it will not serve any benefit to increase the boost further.
- 3] If the boost has audible benefits without adding appreciable distortion, **find a level that suits your taste**. Remember: it's much easier to construct the right subwoofer enclosure for your listening preferences than relying on a bass boost control to do the job!

Remember that the Bass EQ feature has an optional dash mounted control included with the amplifier that will function as an attenuator between the maximum level set at the amplifier and 0dB of attenuation. It will not add boost beyond the level you choose at the amplifier.

Troubleshooting

It's imperative that you read the manual fully to eliminate the possibility of mistakes made from assumptions about how you “think” the amplifier might work versus how it's recommended to be installed. If the amplifier does not appear to be working, check obvious things first such as blown fuses, incorrect wiring configurations, poor or loose connections, crossover, Bass EQ, and gain controls set incorrectly, etc. These elements are the most common cause of initial problems, so take your time and double check all of your work before assuming there's a serious problem.

Diamond Audio Warranty

Diamond Audio Technologies, (DAT) warrants this product to be free from defects in material and workmanship for a period of one (1) year from the original date of purchase provided it was purchased from an authorized DAT retailer within the United States. However, if this product was installed by an authorized DAT retailer, the warranty period will be extended to three (3) years.

This warranty is valid only to the original purchaser and is not extended to owners of the product subsequent to the original purchaser. Any applicable implied warranties are limited in duration to a period of the express warranty as provided herein beginning with the date of the original purchase at retail, and no warranties, whether expressed implied, shall apply to this product thereafter. Some states do not allow limitations on implied warranties; therefore these exclusions may not apply to you.

This warranty gives you specific legal rights; however you may have other rights that vary from state to state. If your DAT amplifier needs service, defective merchandise must be returned to your local Authorized DAT dealer for warranty. Non-defective items received will be returned freight collect. Freight damage and returns are not covered under warranty. Include proof-of-purchase. Warranty expiration on items returned without proof-of-purchase will be determined from the manufacturing date code. You can confirm that a dealer is authorized for service by the display of a current authorized dealer window decal. Any questions can be directed to the Warranty Department at (480) 820-2075 This warranty is valid only if the product is used for the purpose for which it was designed. It does not cover:

- The cost of shipping this product to DAT's Service Department
- Damage through negligence, misuse, abuse or accident
- Damage caused by exposure to water and/or excessive heat
- Items scratched, dented, or physically damaged due to abuse
- Items returned from unauthorized individuals or dealers
- Items previously repaired by any unauthorized repair facility

International customers: please contact your International DAT dealer or distributor concerning specific procedures for your country's warranty policies. If you are not able to locate your local distributor, please contact DAT for assistance at +1(480) 820-2075.

Specifications subject to change without notice.



DIAMOND
AUDIO TECHNOLOGIES, LLC

6915 West Frye Road
Chandler, AZ 85226
480 820 2075 480 813 6210 Fax
www.diamondaudio.com

092608

Free Manuals Download Website

<http://myh66.com>

<http://usermanuals.us>

<http://www.somanuals.com>

<http://www.4manuals.cc>

<http://www.manual-lib.com>

<http://www.404manual.com>

<http://www.luxmanual.com>

<http://aubethermostatmanual.com>

Golf course search by state

<http://golfingnear.com>

Email search by domain

<http://emailbydomain.com>

Auto manuals search

<http://auto.somanuals.com>

TV manuals search

<http://tv.somanuals.com>