

Michelangelo SHDSL



DESCRIPTION

Michelangelo SHDSL is a **Bridge/Router** with **SHDSL technology** for connections **up to 4.6 Mbps** (4 wires connection), or **up to 2.3 Mbps** (2 wires connection).

The **SHDSL technology**, so as the HDSL, carries out symmetric connections, that is the downstream and the upstream are the same. This is its main feature if compared with the ADSL technology that carries out asymmetric connections (the upstream is lower than the downstream).

These two xDSL technologies (symmetric and asymmetric) allow to choose the best solution for the application to be carried out or for the service to be offered.

With the Michelangelo product line, digicom satisfies any kind of application.

The typical application of Michelangelo SHDSL is the **point-to-point Bridge** that allows the connection of two LANs over the leased line or through a VPN via Internet.

Michelangelo SHDSL uses the traditional twisted pair (metallic continuity is needed). In case of **campus applications** (inside a private estate) it is not necessary to buy leased lines (CDA), but you can use proprietary lines.

Code: 8E4338

ROUTER SHDSL

- ITU-T G.991.2 standard
- Symmetric speed up to 2.3/4.6 Mbps
- Autoadaptive connection speed

ATM and PPP Protocols

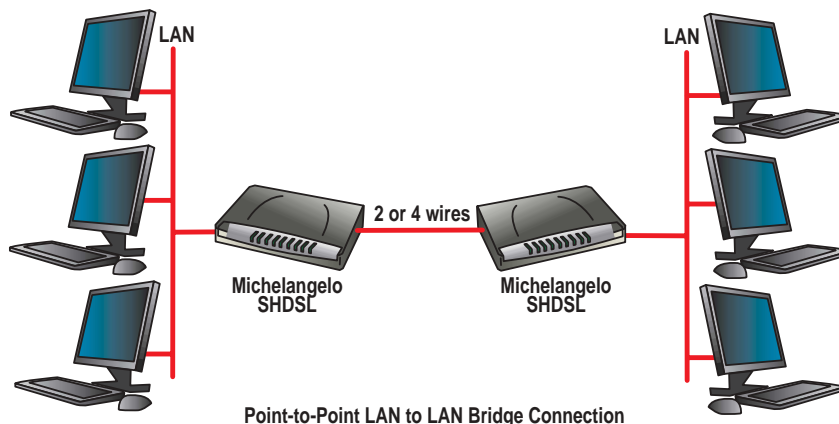
- ATM Adaptation Layer Type 5 (AAL5)
- Multiple Protocol over AAL5 (RFC 2648, formerly RFC 1483)
- Bridged or router Ethernet encapsulation
- VC and LLC based multiplexing
- PPP over Ethernet (PPPoE)
- PPP over ATM (RFC 2364)
- Classical IP over ATM (RFC 1577)
- MAC Encapsulated Routing (RFC 1483 MER)
- OAM F4/F5

Protocols & Network Functionalities

- Nat, static routing and RIP 1/2
- Dynamic Domain Name System (DDNS)
- Virtual Server and DMZ
- SNTP, DNS relay and IGMP proxy
- QoS support

Firewall

- Stateful Packet Inspection (SPI)
- Prevent DoS, Packet filtering, URL blocking



Michelangelo SHDSL

Michelangelo SHDSL is the ideal solution also for the telecom operators that offer **Internet connections with symmetric speed**.

With a simple configuration it is possible to setup Michelangelo SHDSL to be used over 2 and 4 wires connections. Furthermore the connection speed is automatically setup for the maximum performance also in critical connection conditions.

The data security is guaranteed by a **built-in Stateful Packet Inspection Firewall**.

Also the following **VPN protocols are supported** for a secure connection between one or more sites: PPTP Client/Server, IPSec(*) (IKE, 3DES and AES) and L2TP with IPSec.

() Michelangelo SHDSL hasn't got the VPN hardware acceleration module and doesn't guarantee high performances in the connections with IPSec protocol.*

Virtual Private Network (VPN)

- Embedded IPSec & PPTP Client/Server
- Ike Key management
- DES, 3DES and AES encryption for IPSec functions
- MPPE encryption for PPTP
- L2TP within IPSec
- L2TP/PPTP/IPSec passthrough

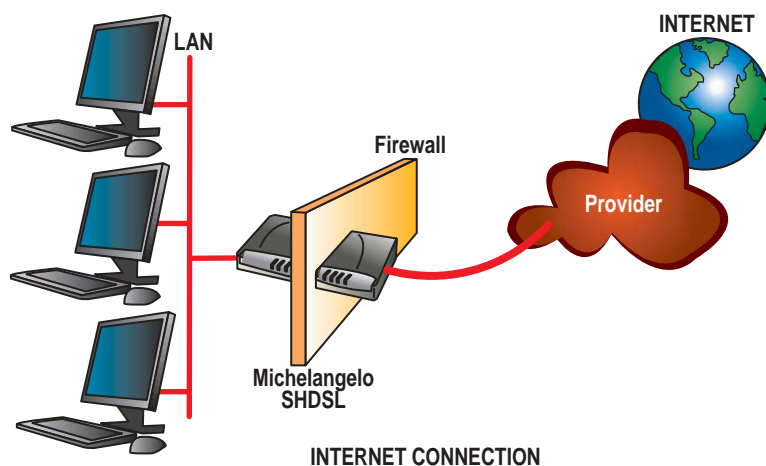
Management

- Local and Remote WEB based configuration
- WEB based firmware update
- EmbSNMP v3, MIB-I and MIB-II support
- DHCP Server/Client/Relay support

Hardware

- WAN: SHDSL port
- LAN: 10/100M 4 ports switch (MDI/MDI-X)
- Factory default reset button
- Power jack
- Power switch
- Input: 12V DC, 1A

- Operating temperature: 0 - 40°C
- Humidity: 20 - 95% non condensing



Free Manuals Download Website

<http://myh66.com>

<http://usermanuals.us>

<http://www.somanuals.com>

<http://www.4manuals.cc>

<http://www.manual-lib.com>

<http://www.404manual.com>

<http://www.luxmanual.com>

<http://aubethermostatmanual.com>

Golf course search by state

<http://golfingnear.com>

Email search by domain

<http://emailbydomain.com>

Auto manuals search

<http://auto.somanuals.com>

TV manuals search

<http://tv.somanuals.com>