


EPSON PRODUCT SUPPORT BULLETIN

Date:	3/14/2002	Originator:	GC/DA
PSB #:	PSB.2002.04.005	Authorization:	
Reference:	TE00-162B	Total Pages:	2
Product(s):	Stylus COLOR 670/ 740/ 760/ 860/ 880/ 900/ 980/ 1160, Stylus C40/ C60/ C80, Stylus Photo 750/ 820/ 870/ 890/ 1200/ 1270/ 1280/ 2000P		
Subject:	Apple USB Printer Sharing		

This bulletin was created to inform you of the steps to configure Apple USB printer sharing.

Check List:

- Both computers must be running Mac OS 9.x
- You must be using TCP/IP as well as AppleTalk
- USB native printers must be connected to Macintosh computers with built in USB ports
- Apple USB printer sharing must be installed on both computers
- EPSON printer driver must be installed on both host and client side computers

Configuration:

1. Verify both computers are running Mac OS 9.x, have Apple USB Printer Sharing installed and are visible to each other on the same network
2. Connect the printer to the host computer and follow instructions for installing the software
3. Install the EPSON printer driver on the client computer
4. On the host computer, open USB Printer Sharing in the Control Panel under the Apple menu
 - a. Click on the Start button to turn sharing on (see Figure 1 below)
 - b. Open the 'My Printers' tab and select the printer you wish to share (see Figure 2 below)
5. On the client computer, open USB Printer Sharing in the Control Panel under the Apple menu
 - a. Open the 'Start/Stop' tab
 - b. Click on the Start button
 - c. Open the 'Network Printers' tab
 - d. Click on the Add button to view the network and available printers on the network (see Figure 3 below)
 - e. Make sure you can see the printer listed that you want to print to and select it (see Figure 4 below)
 - f. Click on Choose
6. Close the USB Printer Sharing window
7. On the client computer, select the printer in the Chooser. The USB option should now be available to select and you should be able to print. (Figure 5)



Figure 1

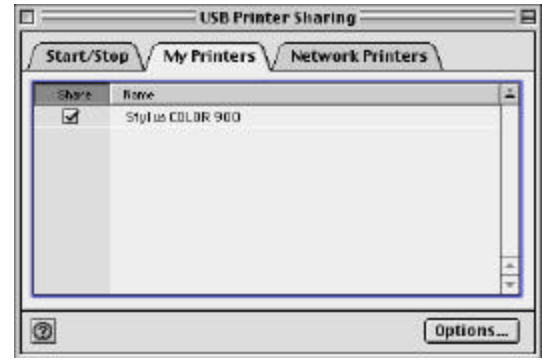


Figure 2

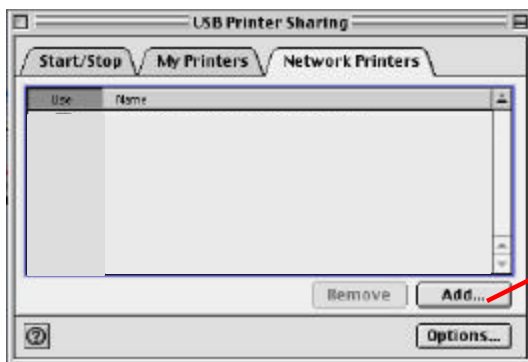


Figure 3

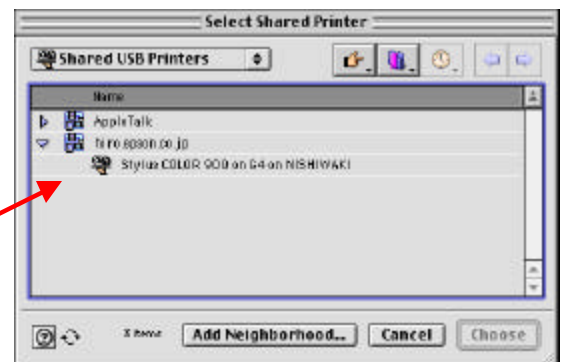


Figure 4

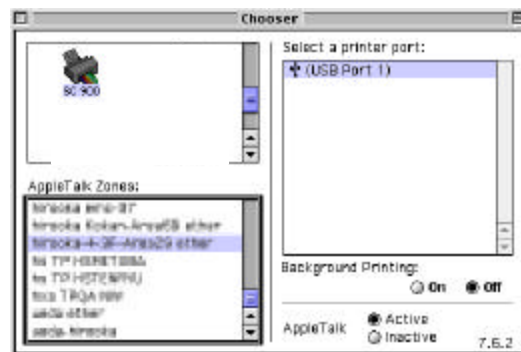



Figure 5

EPSON PRODUCT SUPPORT BULLETIN

Date:	11/29/2001	Originator:	GC/DA
PSB #:	PSB.2001.12.001	Authorization:	
Reference:	TE01-256	Total Pages:	1
Product(s):	Stylus COLOR 670/ 740/ 777/ 860/ 880/ 900/ 980, Stylus C40/ C60/ C80, Stylus Photo 780/ 785EPX/ 820/ 870/ 875DC/ 890/ 1270/ 1280/ 2000P		
Subject:	Available options for connecting your EPSON printer to Mac OS X 10.0		

This bulletin was created to inform you of the currently available options for connecting your EPSON printer to Mac OS X 10.0.

		Choice in Directory Services				
Available from :	Model	USB	EPSON USB	EPSON AppleTalk External(1)	EPSON AppleTalk Internal(2)	EPSON Firewire(3)
Core Driver version 1.0 Installed with Apple Mac OS X 10.0 CD-ROM and later	Stylus COLOR 670	OK				
	Stylus COLOR 740	OK				
	Stylus COLOR 777	OK				
	Stylus COLOR 860	OK				
	Stylus COLOR 880	OK				
Core Driver version 1.1 Available via download from http://support.epson.com/	Stylus COLOR 900		OK		OK	OK
	Stylus COLOR 980		OK		OK	OK
	Stylus Photo 780		OK			
	Stylus Photo 785EPX		OK			
	Stylus Photo 870		OK	OK		
	Stylus Photo 875DC		OK			
	Stylus Photo 890		OK	OK		
	Stylus Photo 1270		OK	OK		
	Stylus Photo 1280		OK	OK		
	Stylus Photo 2000P		OK	OK		
	Stylus C40UX		OK			
	Stylus C60		OK			
	Stylus C80		OK	OK		
Stylus Photo 820		OK				

(1) Refers to EpsonNet 10/100 Base TX External Print Server - C82378*

(2) Refers to EPSON Type-B Ethernet options

(3) Refers to EPSON Type-B Firewire option - C82372*

Free Manuals Download Website

<http://myh66.com>

<http://usermanuals.us>

<http://www.somanuals.com>

<http://www.4manuals.cc>

<http://www.manual-lib.com>

<http://www.404manual.com>

<http://www.luxmanual.com>

<http://aubethermostatmanual.com>

Golf course search by state

<http://golfingnear.com>

Email search by domain

<http://emailbydomain.com>

Auto manuals search

<http://auto.somanuals.com>

TV manuals search

<http://tv.somanuals.com>