

nintendo
Wi-Fi
connection

for
gamer.

NINTENDO DS™

NTR-CFPE-USA

Disney

Phineas and FERB



Download from www.Somanuals.com. All Manuals Search And Download.

INSTRUCTION BOOKLET

PLEASE CAREFULLY READ THE SEPARATE HEALTH AND SAFETY PRECAUTIONS BOOKLET INCLUDED WITH THIS PRODUCT BEFORE USING YOUR NINTENDO® HARDWARE SYSTEM, GAME CARD OR ACCESSORY. THIS BOOKLET CONTAINS IMPORTANT HEALTH AND SAFETY INFORMATION.

IMPORTANT SAFETY INFORMATION: READ THE FOLLOWING WARNINGS BEFORE YOU OR YOUR CHILD PLAY VIDEO GAMES.

⚠ WARNING - Seizures

- Some people (about 1 in 4000) may have seizures or blackouts triggered by light flashes or patterns, and this may occur while they are watching TV or playing video games, even if they have never had a seizure before.
- Anyone who has had a seizure, loss of awareness, or other symptom linked to an epileptic condition should consult a doctor before playing a video game.
- Parents should watch their children play video games. Stop playing and consult a doctor if you or your child has any of the following symptoms:

Convulsions
Altered vision

Eye or muscle twitching
Involuntary movements

Loss of awareness
Disorientation

- To reduce the likelihood of a seizure when playing video games:
 1. Sit or stand as far from the screen as possible.
 2. Play video games on the smallest available television screen.
 3. Do not play if you are tired or need sleep.
 4. Play in a well-lit room.
 5. Take a 10 to 15 minute break every hour.

⚠ WARNING - Radio Frequency Interference

The Nintendo DS can emit radio waves that can affect the operation of nearby electronics, including cardiac pacemakers.

- Do not operate the Nintendo DS within 9 inches of a pacemaker while using the wireless feature.
- If you have a pacemaker or other implanted medical device, do not use the wireless feature of the Nintendo DS without first consulting your doctor or the manufacturer of your medical device.
- Observe and follow all regulations and rules regarding use of wireless devices in locations such as hospitals, airports, and on board aircraft. Operation in those locations may interfere with or cause malfunctions of equipment, with resulting injuries to persons or damage to property.

⚠ WARNING - Repetitive Motion Injuries and Eyestrain

Playing video games can make your muscles, joints, skin or eyes hurt. Follow these instructions to avoid problems such as tendinitis, carpal tunnel syndrome, skin irritation or eyestrain:

- Avoid excessive play. Parents should monitor their children for appropriate play.
- Take a 10 to 15 minute break every hour, even if you don't think you need it.
- If your hands, wrists, arms or eyes become tired or sore while playing, or if you feel symptoms such as tingling, numbness, burning or stiffness, stop and rest for several hours before playing again.
- If you continue to have any of the above symptoms or other discomfort during or after play, stop playing and see a doctor.

⚠ WARNING - Battery Leakage

The Nintendo DS contains a rechargeable lithium ion battery pack. Leakage of ingredients contained within the battery pack, or the combustion products of the ingredients, can cause personal injury as well as damage to your Nintendo DS.

If battery leakage occurs, avoid contact with skin. If contact occurs, immediately wash thoroughly with soap and water. If liquid leaking from a battery pack comes into contact with your eyes, immediately flush thoroughly with water and see a doctor.

To avoid battery leakage:

- Do not expose battery to excessive physical shock, vibration, or liquids.
- Do not disassemble, attempt to repair or deform the battery.
- Do not dispose of battery pack in a fire.
- Do not touch the terminals of the battery, or cause a short between the terminals with a metal object.
- Do not peel or damage the battery label.

Important Legal Information

This Nintendo game is not designed for use with any unauthorized device. Use of any such device will invalidate your Nintendo product warranty. Copying of any Nintendo game is illegal and is strictly prohibited by domestic and international intellectual property laws. "Back-up" or "archival" copies are not authorized and are not necessary to protect your software. Violators will be prosecuted.

REV-E

The official seal is your assurance that this product is licensed or manufactured by Nintendo. Always look for this seal when buying video game systems, accessories, games and related products.



Nintendo does not license the sale or use of products without the Official Nintendo Seal.

THIS GAME CARD WILL WORK ONLY WITH THE NINTENDO DS™ VIDEO GAME SYSTEM.

⚠ CAUTION - Stylus Use

To avoid fatigue and discomfort when using the stylus, do not grip it tightly or press it hard against the screen. Keep your fingers, hand, wrist and arm relaxed. Long, steady, gentle strokes work just as well as many short, hard strokes.



The Terms of Use Agreement which governs Nintendo Wi-Fi Connection game play is available in the Nintendo Wi-Fi Connection Instruction Booklet or online at www.nintendowifi.com/terms.

To protect your privacy, do not give out personal information such as last name, phone number, birth date, age, e-mail or home address when communicating with others.

Licensed by



NINTENDO, NINTENDO DS AND THE OFFICIAL SEAL ARE TRADEMARKS OF NINTENDO. © 2006 NINTENDO.

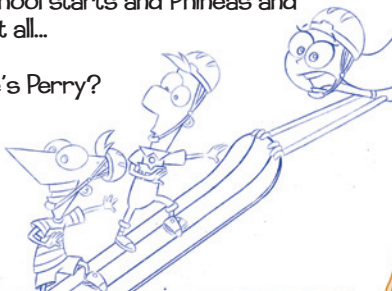
CONTENTS

Phineas and Ferb	6
Getting Started.....	7
Controls.....	8
Menu Controls.....	9
Game Controls.....	10
Game Menu	11
Main Menu.....	12
What'cha Doin'?'.....	13
Hey! Where's Perry?.....	24
Customer Support	26
Limited Warranty	27

PHINEAS AND FERB

School is out and Phineas and Ferb are ready to start an all-new summer adventure! Build the coolest inventions and most unbelievable rides as Phineas and Ferb. Find missing parts and gadgets to finish your projects. Build a giant roller coaster through the city, ride a monster truck race course, and dive into a fun water slide on a speed boat. There's a lot of stuff to do before school starts and Phineas and Ferb plan to do it all...

And, hey! Where's Perry?

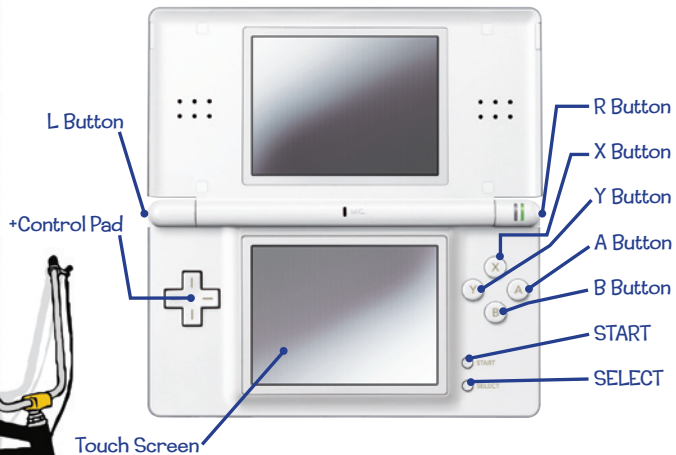


GETTING STARTED

1. Make sure the POWER switch is OFF.
2. Insert the **Disney Phineas and Ferb** Game Card in the Nintendo DS™ slot.
3. Turn the POWER switch ON.
NOTE: the **Disney Phineas and Ferb** Game Card is designed for the Nintendo DS™ system.
4. Please read and accept the Health and Safety screen by touching the bottom screen.
5. If the game does not automatically launch, select the **Disney Phineas and Ferb** game icon from the DS launch screen.



CONTROLS



MENU CONTROLS

Use the DS **Touch Screen** and **stylus** to select and choose items on the menus. You can also use the **+Control Pad** and the **A** and **B Buttons** to get around the menus.

MENU CONTROLS

Touch Screen	Select with your stylus
+Control Pad	Highlight menu options
A Button	Select
B Button	Cancel and go back to the previous menu



GAME CONTROLS

GAME CONTROLS

Touch Screen	Use the stylus to make discoveries and interact with objects and people
+Control Pad	Move
A Button	Jump
B Button	Run
X Button	Use an item (or tap Touch Screen Item icon)
Y Button	Use an item (or tap Touch Screen Item icon)
START	View your Backpack inventory
SELECT	Pause and select Continue or Quit game

GAME MENU

Select Play Game to go to the backyard or select DGamer to visit Disney's DGamer™, the coolest place online for Disney games and Disney gamers!

DGamer

Choose DGamer to enter the new online community exclusively for Disney gamers. Once inside, check out the cool achievements you've unlocked, send gifts and chat with friends, create a 3D avatar and more. (See the DGamer Quick Start Guide or visit www.DGamer.com for more details.) Plus, while in LCD Off Mode you can plug in your headphones, close your DS and listen to the music from DGamer.



MAIN MENU

Use the **stylus** on the **Touch Screen** to select New Game, Load Game, Results, or Options.

New Game

Summer vacation has just begun! Click here to start a brand new adventure.

Load Game

Select this option to continue your adventure from a previously saved game.

Results

Check out your fastest race times on each of your wild courses.

Options

Adjust fun summertime settings like special effects and volume.



WHAT'CHA DOIN'?

Phineas and Ferb's Backyard

PERRY

Interact with Perry to save the game.

DOORS

Each door opens to a different part of your summer adventure. Open up the other doors as you build new vehicles and complete each race course.

SUMMER FUN TENT

View vehicle and course blueprints by tapping any of the vehicles shown. After you collect all of the missing parts from each world, return to the Summer Fun Tent to build the machines.

WORKSHOP

Use collected pieces to build and upgrade gadgets.



Action Screen

Busted Bar

See how close you are to getting busted by Candace.

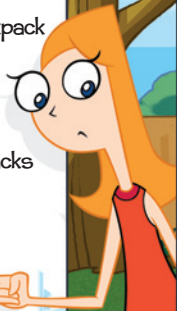
Screws

Collect screws in every level to upgrade your gadgets.



Power Ups

Tap the backpack to select a Power Up. Drop it into one of the small backpacks to activate.



Team Up Icon

Tap the icon on the bottom right corner for Phineas and Ferb to team up. You can jump (press the **A Button**), climb ladders, push giant buttons, and much more. Tap the icon again to separate them.

CHARACTER SELECTION

Tap the **L Button** or the character icon to switch between Phineas and Ferb. Each character has special skills, abilities, and gadgets to use.

PHINEAS

Phineas is the imaginative, talkative one. He is good at searching through scrap piles to collect parts.

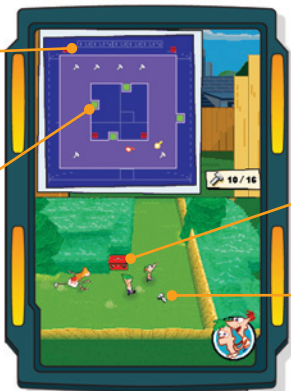
FERB

Ferb may not have the gift of gab, but he does have a talent for repairing objects. He can also move heavy objects to open hidden areas.

Candace Minigame

Don't let Candace catch you! If you successfully avoid her while trying to pick up screws, you will earn a Shortcake to use later.

Mini Map



Hide Spot

Team up so you can fit into these narrow hiding places.

Treasure Chest

Open treasure chests to find useful items to avoid Candace in the maze.

Loose Screws

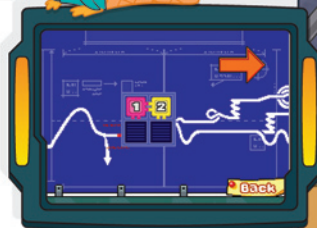
Your screws have been scattered across the yard. Collect them all while avoiding Candace.

Building Courses

Check the Course Blueprints to find missing course sections. Solve four minigame puzzles to complete your project.

Puzzle Minigame

Use the **stylus** to drag puzzle pieces into the picture frame. If a piece does not fit correctly, try rotating it with the gear mechanism on the left.



Building Vehicles

Review the Vehicle Blueprints to see missing parts. After you have collected the right parts, visit the Summer Fun Tent to construct the vehicle.

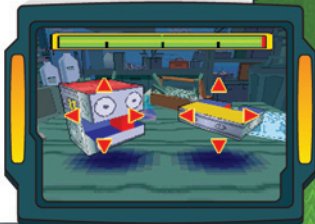
UPGRADING VEHICLES

Tap the Upgrade icon after you complete a vehicle. Upgraded vehicles can reach new course sections to find more stars.

BUILD IT MINIGAME

To build a part from two of your collected pieces, rotate the two pieces shown on the **Touch Screen**.

- Tap the arrow buttons to align the pieces.
- Touch the **Touch Screen** to change the camera angle.
- Tap the Build icon to join aligned pieces.



Course Racing

The Top Screen for each course is where you race!



VEHICLE CONTROLS

+Control Pad Right	Accelerate
+Control Pad Left	Brake
+Control Pad Up/Down	Choose upper or lower track
A Button	Jump
X Button	Windshield wipers
R Button	Turbo Boost

STARS

Collect stars while racing to complete a course and unlock the next world.

COURSE POWER UPS

Speed Up items give your vehicle a temporary boost of speed. The Glass Cleaners remove paint splatches on your screen.

BONUS STAGE

Racing a fully upgraded vehicle launches you into outer space where Agent P and Dr. Doofenshmirtz battle head-to-head. Tap the matching icons on your **Touch Screen** to dodge falling debris and earn a perfect bonus.



Tips and Tricks

Here are a few more tricks on how to play the game.

SPECIAL ITEMS

To activate special items, open the Pause Menu or tap the Backpack icon on the **Touch Screen**.

Shortcake

Shortcake calms Candace down and lowers her Busted Bar.

Invisibility Potion

This potion makes Phineas and Ferb invisible for a few moments so that Candace can't see them.



GADGETS

Some gadgets are for Phineas and others are for Ferb.

Basketball Shoes

Lace up and jump higher in the neighborhood when you equip yourself with these special shoes.

Roller Skates

When teamed up, roller skates allow you to move around faster.

Vacuum

As Ferb, use the vacuum to scoop up items hidden in walls and other hard to reach places.

Backpack Inventory

Your backpack can hold a lot of stuff! Tap an icon (Items, Gadgets, Scraps, etc.) to see what you have.

ITEMS TAB

This is your full list of collected items, gadgets, scraps, and recipes. Tap up to two items to use (**X** or **Y Button** or Item icon).

GADGETS TAB

Here are all the special tools you can use. Tap a gadget and drop it into your Backpack.

SCRAPS TAB

This shows you all the items found in scrap piles from each world.

RECIPES TAB

Here you can build your gadgets and vehicle parts. Tap an item to find out which pieces you need.

COURSES BLUEPRINT TAB

Access the course blueprints to remind you how many more pieces you need. Once you've found all the parts, hurry back to the Summer Fun Tent to put that course together.

BLUEPRINTS TAB

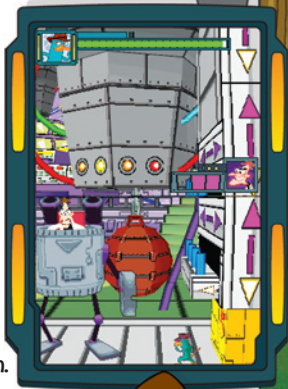
This is another helpful way to access the Vehicle Blueprints.

HEY! WHERE'S PERRY?

Phineas and Ferb's pet platypus, Perry, leads a double life as "Agent P". Once again, Agent P has been assigned to foil yet another one of Dr. Doofenshmirtz's evil plans to ruin the world!

On the **Touch Screen** use the **stylus** to move Agent P. Tap Agent P with the **stylus** to jump.

- Get Dr. Doofenshmirtz out of his robot contraption!
- Get close to a switch and follow the icons exactly as they are shown.
- Once he's out, make your move to short circuit his invention and escape!



Free Manuals Download Website

<http://myh66.com>

<http://usermanuals.us>

<http://www.somanuals.com>

<http://www.4manuals.cc>

<http://www.manual-lib.com>

<http://www.404manual.com>

<http://www.luxmanual.com>

<http://aubethermostatmanual.com>

Golf course search by state

<http://golfingnear.com>

Email search by domain

<http://emailbydomain.com>

Auto manuals search

<http://auto.somanuals.com>

TV manuals search

<http://tv.somanuals.com>