

WALT DISNEY PICTURES AND WALDEN MEDIA PRESENT

NTR-YONE-USA

THE CHRONICLES OF NARNIA

PRINCE CASPIAN

NINTENDO DS™



Download From www.Softpedia.com All Manuals Search And Download.

INSTRUCTION BOOKLET

PLEASE CAREFULLY READ THE SEPARATE HEALTH AND SAFETY PRECAUTIONS BOOKLET INCLUDED WITH THIS PRODUCT BEFORE USING YOUR NINTENDO® HARDWARE SYSTEM, GAME CARD OR ACCESSORY. THIS BOOKLET CONTAINS IMPORTANT HEALTH AND SAFETY INFORMATION.

IMPORTANT SAFETY INFORMATION: READ THE FOLLOWING WARNINGS BEFORE YOU OR YOUR CHILD PLAY VIDEO GAMES.

⚠ WARNING - Seizures

- Some people (about 1 in 4000) may have seizures or blackouts triggered by light flashes or patterns, such as while watching TV or playing video games, even if they have never had a seizure before.
- Anyone who has had a seizure, loss of awareness, or other symptom linked to an epileptic condition should consult a doctor before playing a video game.
- Parents should watch when their children play video games. Stop playing and consult a doctor if you or your child have any of the following symptoms:

**Convulsions
Altered vision**

**Eye or muscle twitching
Involuntary movements**

**Loss of awareness
Disorientation**

- To reduce the likelihood of a seizure when playing video games:
 1. Sit or stand as far from the screen as possible.
 2. Play video games on the smallest available television screen.
 3. Do not play if you are tired or need sleep.
 4. Play in a well-lit room.
 5. Take a 10 to 15 minute break every hour.

⚠ WARNING - Radio Frequency Interference

The Nintendo DS can emit radio waves that can affect the operation of nearby electronics, including cardiac pacemakers.

- Do not operate the Nintendo DS within 9 inches of a pacemaker while using the wireless feature.
- If you have a pacemaker or other implanted medical device, do not use the wireless feature of the Nintendo DS without first consulting your doctor or the manufacturer of your medical device.
- Observe and follow all regulations and rules regarding use of wireless devices in locations such as hospitals, airports, and on board aircraft. Operation in those locations may interfere with or cause malfunctions of equipment, with resulting injuries to persons or damage to property.

⚠ WARNING - Repetitive Motion Injuries and Eyestrain

Playing video games can make your muscles, joints, skin or eyes hurt after a few hours. Follow these instructions to avoid problems such as tendinitis, carpal tunnel syndrome, skin irritation or eyestrain:

- Avoid excessive play. It is recommended that parents monitor their children for appropriate play.
- Take a 10 to 15 minute break every hour, even if you don't think you need it.
- When using the stylus, you do not need to grip it tightly or press it hard against the screen. Doing so may cause fatigue or discomfort.
- If your hands, wrists, arms or eyes become tired or sore while playing, stop and rest them for several hours before playing again.
- If you continue to have sore hands, wrists, arms or eyes during or after play, stop playing and see a doctor.

⚠ WARNING - Battery Leakage

The Nintendo DS contains a rechargeable lithium ion battery pack. Leakage of ingredients contained within the battery pack, or the combustion products of the ingredients, can cause personal injury as well as damage to your Nintendo DS.

If battery leakage occurs, avoid contact with skin. If contact occurs, immediately wash thoroughly with soap and water. If liquid leaking from a battery pack comes into contact with your eyes, immediately flush thoroughly with water and see a doctor.

To avoid battery leakage:

- Do not expose battery to excessive physical shock, vibration, or liquids.
- Do not disassemble, attempt to repair or deform the battery.
- Do not dispose of battery pack in a fire.
- Do not touch the terminals of the battery, or cause a short between the terminals with a metal object.
- Do not peel or damage the battery label.

Important Legal Information

REV-E

This Nintendo game is not designed for use with any unauthorized device. Use of any such device will invalidate your Nintendo product warranty. Copying of any Nintendo game is illegal and is strictly prohibited by domestic and international intellectual property laws. "Back-up" or "archival" copies are not authorized and are not necessary to protect your software. Violators will be prosecuted.

The official seal is your assurance that this product is licensed or manufactured by Nintendo. Always look for this seal when buying video game systems, accessories, games and related products.



Nintendo does not license the sale or use of products without the Official Nintendo Seal.

THIS GAME CARD WILL WORK ONLY WITH THE NINTENDO DS™ VIDEO GAME SYSTEM.

⚠ CAUTION - Stylus Use

To avoid fatigue and discomfort when using the stylus, do not grip it tightly or press it hard against the screen. Keep your fingers, hand, wrist and arm relaxed. Long, steady, gentle strokes work just as well as many short, hard strokes.



LICENSED BY



NINTENDO, NINTENDO DS AND THE OFFICIAL SEAL ARE TRADEMARKS OF NINTENDO.

© 2006 NINTENDO. ALL RIGHTS RESERVED.

Download from www.somanuals.com

WALT DISNEY PICTURES AND WALDEN MEDIA PRESENT
-THE CHRONICLES OF-
NARNIA
PRINCE CASPIAN

TABLE OF CONTENTS

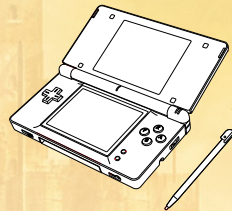
Introduction	04
Getting Started	05
Main Menu	06
Basic Controls	07
Navigation	08
Combat	09
Battle Moves	10
Character Setup Menus	13
Options	17
Customer Support Information	20
Limited Warranty	21

INTRODUCTION

The characters of C.S. Lewis's timeless fantasy come to life once again in this newest installment of The Chronicles of Narnia series. One year after the incredible events of *The Lion, the Witch and the Wardrobe*, Peter, Susan, Edmund and Lucy find themselves back in that faraway wondrous realm, only to discover that more than 1300 years have passed in Narnian time. During their absence, the Golden Age of Narnia has come to an end; Narnia has been conquered by the Telmarines and is now under the control of the evil King Miraz. The four children meet Narnia's rightful heir to the throne, the young Prince Caspian, who has been forced into hiding by Miraz. With the help of a large number of characters from Old Narnia, they embark on a remarkable quest to rescue the Narnians from tyranny, and restore magic and glory to the land.

Now in *The Chronicles of Narnia: Prince Caspian* you control not only the Pevensie children but this special group of Narnians and you must use all of their combined skills and abilities to fight against Miraz's countless hordes. Ultimately, you must help to restore Prince Caspian to the throne. This is your quest.

GETTING STARTED



1. Make sure the POWER switch is **OFF**.
2. Insert *The Chronicles of Narnia: Prince Caspian* Game Card in the Nintendo DS™ slot.
3. Turn the POWER switch **ON**.

NOTE: *The Chronicles of Narnia: Prince Caspian* Game Card is designed for the Nintendo DS™ system.

4. Please read and accept the Health and Safety screen by touching the bottom screen.
5. If the game does not automatically launch, select *The Chronicles of Narnia: Prince Caspian* game icon from the DS launch screen.

CREATING A PROFILE

Select Profile

First select a slot to save your profile by touching the word **New**.

Delete Profile

Select **DELETE PROFILE** to erase all data from the selected profile.

MAIN MENU

Start New Game

Select Enter Narnia if you are beginning a new adventure.

Continue

Select CONTINUE to begin your game where you left off.

Options

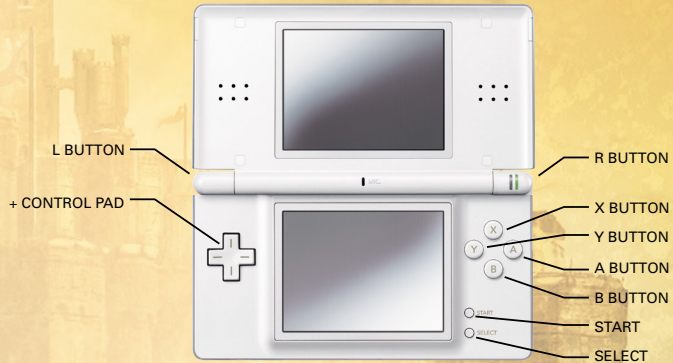
Choose OPTIONS to go to the Options menu where you can adjust the audio volume, text speed, game language and view the credits.

DGamer™

Choose DGamer to enter the new online community exclusively for Disney gamers. Once inside, check out all of the cool achievements you've unlocked, send gifts and chat with friends, create a 3D avatar and more. (See the DGamer Quick Start Guide for more details.) Plus, while in LCD Off Mode you can plug in your headphones, close your DS and listen to the music from *DGamer*.



BASIC CONTROLS



Basic Game Controls

Touch Screen or +Control Pad	Navigate character and menus
SELECT	Activate Character Setup Menus
START	Access Exit Menu

NAVIGATION

Objective Marker
You are here
Mini-Map



Character Setup Menus
Treasure Chest
Player
Enemy



TOUCH SCREEN Use the **Touch Screen** to navigate your character around the overworld. (Alternate Control: **+Control Pad** also moves your character around the overworld.)

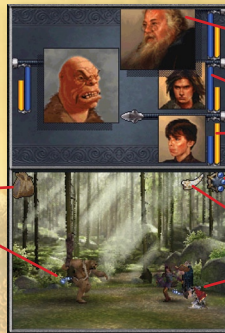
SELECT Bring up Character Setup Menus.

START Access Exit Menu.

Simply move your character to an enemy to initiate combat, or move your character close to an object and touch it with the **stylus** to interact with it. Use the Mini-Map on the top screen to find objectives and to see where you currently are in the game world.

COMBAT

Item Bag
Enemy



Currently Selected Hero
Fatigue Meter
Health Meter
Team-Up Indicator
Horn to Exit
Heroes

INITIATE COMBAT

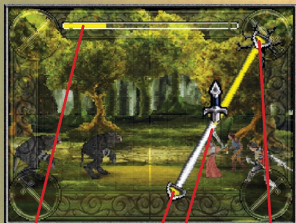
1. To initiate combat, first select a Hero (on the right side of the screen.)
(Note: Watch for your hero to rise to their feet before selecting.)
2. Next, select an enemy to attack. The Battle Move for your selected hero will come up. Successfully complete each Battle Move to attack the enemy. *(Note: You must wait for your Fatigue Meter to fully replenish before you can select that Hero to attack again.)*

Team-Up Some Heroes are able to Team-Up with other Heroes (*See the Party Select Screen (page 13) for how to identify which characters can Team-Up*). Successfully perform several attacks to light up the Team-Up, and the Heroes will do a special, intense battle move!

Flee Battle Press the **stylus** to the horn, and then blow into the DS microphone to flee from battle.

BATTLE MOVES:

There are 6 different types of Battle Moves, depending upon the character chosen. Try different characters and see what Battles Moves you can master!

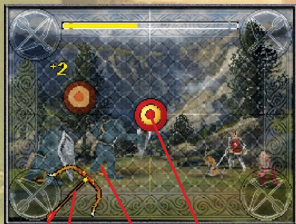


Timer
Finish Start
Path

SWORD SLASH BATTLE MOVE

Use your **stylus** to trace the path from start to finish. Be careful to not go too far off the path or the Battle Move will end.

TIP: Trace the path quickly for maximum damage!



Bow
Pull Back Targets
Direction of Fire

BOW BATTLE MOVE

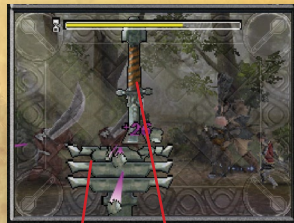
When the bow appears touch the middle of the bow, then pull back to notch an arrow. Aim the arrow towards the targets by rotating around the bow. Lift the **stylus** off the screen to release an arrow in the direction of fire.

TIP: Hit the targets in the center for maximum damage!

BASH BATTLE MOVE

When the Club appears grab it with your **stylus**. When the target appears directly below your club, quickly flick the Club down, smashing the club into the target.

TIP: Flick the club down quickly for more damage!

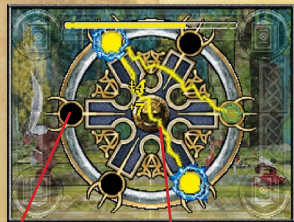


Pillar Club

MAGIC BATTLE MOVE

Watch the sequence of Magic Points around the symbol. Wait for the points to finish their sequence. Remember the order the points light up. When it's your turn, touch the first point, then drag your **stylus** to the next point. When all points have been touched, quickly draw clockwise circles with your stylus to spin the symbol and cast the spell.

TIP: Spin the symbol quickly for maximum damage!



Magic Points Magic Line

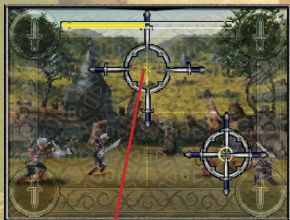


Target Sword

HEAVY SWORD SLASH BATTLE MOVE

When the swords appear, quickly rub the **stylus** back and forth along the length of the swords until they engage the target. Rub each sword until all swords are engaged with the target. If any sword moves off the screen, the Battle Move ends.

TIP: On harder Battle Moves you will have to engage up to eight swords.



Target





JAB BATTLE MOVE

When the jab targets appear watch the dagggers as they move towards the center. Tap each jab target when the dagggers are touching in the center of the target. Tap each target until all targets are complete. Be sure to hit the targets before they disappear.

TIP: Touch the target at the exact moment the dagggers meet for maximum damage!


CHARACTER SETUP MENUS

Selecting the Character Setup Menu (by pressing the top left icon during adventure mode or pressing **SELECT**) brings up menus where you can:

-  Party's item bag
-  Collected items
-  Quit the game
-  Quest log
-  Change Heroes

CHARACTER SELECT

Use this screen to drag different available Heroes into your party. You can have up to 3 Heroes in your party at a time.

Notice each Hero's stats on the top screen, and also notice which other Heroes you can perform Team-ups with (*marked with this symbol* 

You can touch one of up to 3 helper characters to assist you in battle. Try different characters to see how they can change the tide of battle!



TIP: Try different combinations of Heroes to discover all the different Team-Ups.

ITEM BAG:

Use this screen to drag items from your inventory into your bag. Once in your bag, items may be used by selecting the item's icon while in combat.

TIP: In battle, items with a red border are used against enemies. Items with a blue border are used to help your characters.



Item description

Items available to be placed in item bag

of items available

Scroll arrow

Items currently in item bag

FORGE INVENTORY

Use this screen to check out how many items you've collected in your adventures. Quest Items help you complete quests. Forge items can be taken to the Forge and turned into new equipment for your characters.

TIP: Perform side quests, search for treasure chests and defeat enemies to collect Forge Items.



Item Description

Forge Items

Quest Items

FORGE

You gain access to the Forge when you find the seven brothers. The Forge gives you access to equipment to upgrade your Battle Moves.



Items required

Characters to upgrade

Upgrade select

TIP: You'll do more damage in combat if you upgrade your Battle Moves.

PAUSE



Return to Game
Quit to Main Screen

You go to this screen when you pause the game. You can choose to go back to your adventure or quit to the main title screen.

TIP: Your progress will be saved only from the last screen change.

OPTIONS



Text Speed Slider
Drag the Slider to change the speed that text appears in-game.

Faster Text
Slower Text

Go to: www.princecaspianthegame.com
for hints, tips and more information.

Free Manuals Download Website

<http://myh66.com>

<http://usermanuals.us>

<http://www.somanuals.com>

<http://www.4manuals.cc>

<http://www.manual-lib.com>

<http://www.404manual.com>

<http://www.luxmanual.com>

<http://aubethermostatmanual.com>

Golf course search by state

<http://golfingnear.com>

Email search by domain

<http://emailbydomain.com>

Auto manuals search

<http://auto.somanuals.com>

TV manuals search

<http://tv.somanuals.com>