



# SPECIFICATIONS BH2312

## FEATURES

- Low frequency array loudspeaker
- Three horn-loaded 12 inch woofers
- Beamwidth at upper frequency limit matches MQ2343D
- For permanent installation only
- Digital signal processor required for specified performance

## DESCRIPTION

The BH2312 uses three horn loaded 12 inch cones mounted in a trapezoidal enclosure. Its frequency response has been optimized for use as a dedicated low frequency system when used with a companion MQ mid/high loudspeaker. Each 500 watt, 8 ohm driver has its own connections on the input panel. This allows the drivers to be connected in parallel to one amplifier channel or connected individually to separate amplifier channels. The enclosure features a comprehensive system of 3/8-16 threaded suspension points.

## APPLICATION

The BH2312 is designed to work with the high "Q" MQ2343D mid/high loudspeaker to create a full range audio system capable of tremendous output. The three horn-loaded 12 inch drivers provide maximum impact from 45 Hz to 300 Hz over great distances. Use in multiples of three will optimize LF response and smoothness. The BH2312 is also compatible with any MQ2300 Series mid/high product.

## PERFORMANCE

<b>Frequency Response (Array of three BH2312)</b>	
±3 dB	55 Hz to 300 Hz
-10 dB	34 Hz
<b>Axial Sensitivity (dB SPL, 1 W @ 1 m)</b>	
LF	112
<b>Impedance (Ohms)</b>	
LF1/LF2/LF3	8/8/8
LF Paralleled	2.67
<b>Power Handling, (Watts, continuous)</b>	
LF1/LF2/LF3	500/500/500
LF Paralleled	1500
<b>Calculated Maximum Output (dB SPL)</b>	
LF Peak	149.8
LF Long Term	143.8



## Nominal Coverage Angle/-6 dB points (degrees)

Horizontal	120 @ 250 Hz
Vertical 1/2/3 boxes	80/32/22 @ 250 Hz

## Recommended High-Pass Frequency

24 dB/Octave	45 Hz
--------------	-------

## PHYSICAL

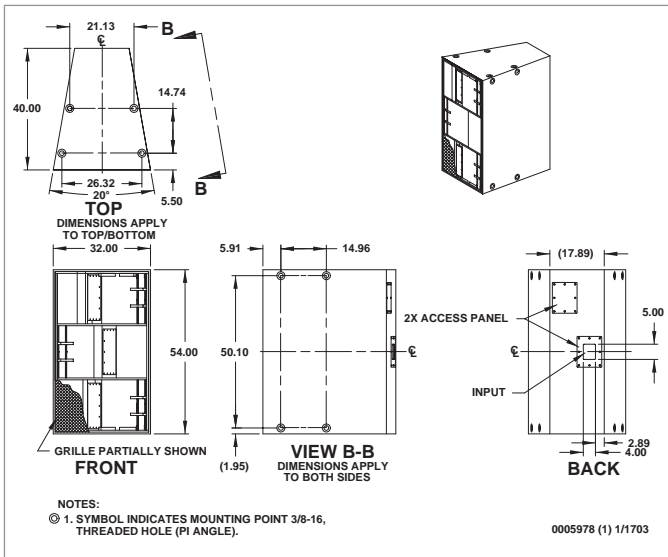
Configuration	Dedicated LF loudspeaker	
LF Subsystem	3x 12 in woofers, horn loaded	
Enclosure Material	Exterior grade Baltic birch plywood	
Finish	Wear resistant textured black paint	
Connectors	2x 6-contact barrier strip	
Suspension Hardware	16x 3/8"-16 threaded mounting/suspension points (4 each top, bottom and sides)	
Grille	Powder coated perforated steel	
<b>Dimensions</b>	<b>inches</b>	<b>millimeters</b>
	Height	54.00 1372
	Width (front)	32.00 813
	Width (rear)	17.89 454
	Depth	40.00 1016
Trapezoid Angle	10° per side	
<b>Weights</b>	<b>pounds</b>	<b>kilograms</b>
	Net Weight	310 140.9
	Shipping Weight	335 152.3





# SPECIFICATIONS BH2312

## DIMENSIONAL DRAWING



Manufacturing tolerances are +/- 0.13 and +/- 1°

PRELIMINARY



## Free Manuals Download Website

<http://myh66.com>

<http://usermanuals.us>

<http://www.somanuals.com>

<http://www.4manuals.cc>

<http://www.manual-lib.com>

<http://www.404manual.com>

<http://www.luxmanual.com>

<http://aubethermostatmanual.com>

Golf course search by state

<http://golfingnear.com>

Email search by domain

<http://emailbydomain.com>

Auto manuals search

<http://auto.somanuals.com>

TV manuals search

<http://tv.somanuals.com>