



SPECIFICATIONS DCS2

FEATURES

- Advanced EAW horn technology provides prodigious output in a relatively small enclosure
- Enhanced performance when used in multiples
- Dual heavy-duty 12-in woofers

DESCRIPTION

The DCS2 bent horn subwoofer is engineered for use in permanent installations. The system loads purpose-designed dual 12-in drivers on an advanced bent bass horn, matching path length to cone area. This technique maximizes driver efficiency and provides greater output than traditional direct-radiating dual 18-in subwoofers.

APPLICATION

The DCS may be used for both high energy dance clubs and live performance clubs. Multiple units can be configured in a variety of ways to maximize effective horn size and low frequency coupling. Horn-loading produces the very high levels of sub bass reinforcement required in modern clubs.

The DCS2 enclosure features exceptionally rugged construction. Like all EAW products, it can be special ordered in virtually any color to match a specific décor. Six year warranty.

PERFORMANCE

Frequency Response	
±3 dB	45 Hz to 250 Hz
-10 dB	35 Hz
Axial Sensitivity (dB SPL, 1 watt @ 1 m)	
Sub Bass	107
Nominal Input Impedance (ohms)	
Sub Bass	4
Power Handling (watts, continuous)	
Sub Bass	1000
Calculated Output Limit (dB SPL @ 1 m)	
Sub Bass Peak	143
Sub Bass Long Term	137



PHYSICAL

Product Group	Avalon	
Configuration	Dedicated subwoofer	
Sub Bass Subsystem	2x 12-in woofers, horn-loaded	
Enclosure Material	Exterior-grade Baltic birch plywood	
Finish	Wear-resistant textured black paint	
Connectors	2x Neutrik NL4 Speakon	
Grille	Zinc coated perforated steel	
Dimensions	inches	millimeters
	Height	36.0 914
	Width	36.0 914
	Depth	36.0 914
Weights	pounds	kilograms
	Net Weight	246 111.4
	Shipping Weight	266 120.4

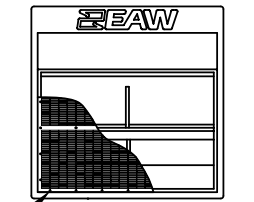




SPECIFICATIONS DCS2

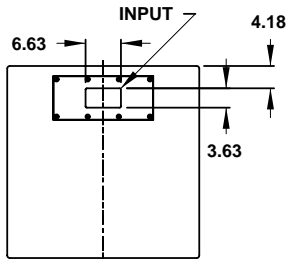
DIMENSIONAL DRAWINGS

INDICATES CENTER OF BALANCE.

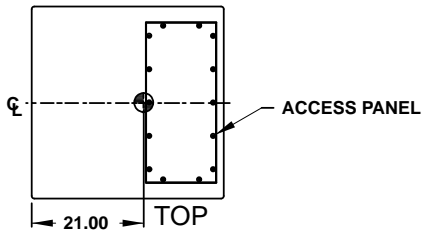


GRILL PARTIALLY SHOWN

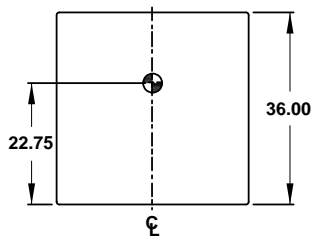
FRONT



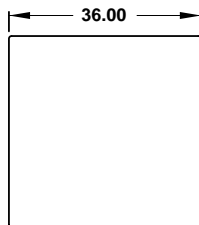
BACK



TOP

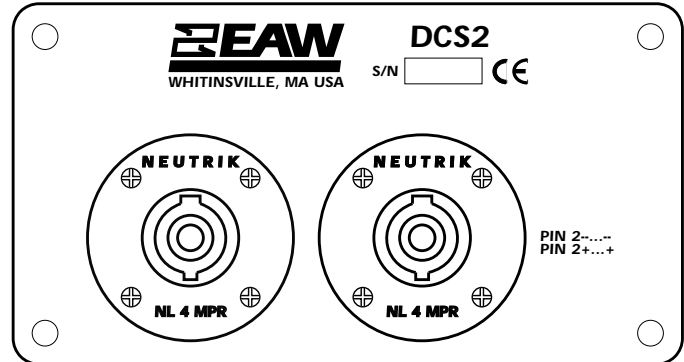


RIGHT SIDE
DIMENSIONS APPLY
TO BOTH SIDES



BOTTOM

INPUT PANEL



510963 (A)
8/24/99

Manufacturing tolerances are +/- 0.13 and +/- 1°



Free Manuals Download Website

<http://myh66.com>

<http://usermanuals.us>

<http://www.somanuals.com>

<http://www.4manuals.cc>

<http://www.manual-lib.com>

<http://www.404manual.com>

<http://www.luxmanual.com>

<http://aubethermostatmanual.com>

Golf course search by state

<http://golfingnear.com>

Email search by domain

<http://emailbydomain.com>

Auto manuals search

<http://auto.somanuals.com>

TV manuals search

<http://tv.somanuals.com>