


Earlex[®]

Autofeed **CORDLESS PAINTING SYSTEM**

PR9

OPERATING INSTRUCTIONS



Thank you for purchasing the Earlex PR9 Autofeed Paint Roller.
BEFORE USE - PLEASE READ THE SAFETY & OPERATING
INSTRUCTIONS.

Please retain for future reference

SAFETY OPERATING INSTRUCTIONS

PLEASE READ BEFORE USE

- ALWAYS CHECK PAINT MANUFACTURERS THINNING INSTRUCTIONS BEFORE PROCEEDING.
- ALWAYS CHECK PAINT MANUFACTURER'S INSTRUCTIONS FOR SURFACE PREPARATION.
- ENSURE PAINT IS STIRRED THOROUGHLY BEFORE USE.
- Never use corroded or damaged batteries, do not mix old and new batteries.
- Do not overfill the paint reservoir.
- NEVER use any liquids other than those specified.
- Always ensure motor housing is firmly clipped to container before commencing work.
- Ensure strap is secure before commencing work.
- NEVER strain, kink or block the delivery tube in anyway - even when stored.
- Keep upright at all times.
- Do not remove the lid containing the motor and pump when in operation.

- Do not operate when paint container is empty.
- During breaks in painting never allow the roller to be placed on a surface lower than the paint level in the container as this could cause the paint to siphon out.
- Always wear protective clothing and as with all decorating, cover furnishings, carpets etc.

HAVING FINISHED...

- Ensure all parts are thoroughly cleaned as instructed in the cleaning guide, and when replacing roller cover use only the PRA2 supplied by Earlex.
- Do not allow the motor housing to become immersed in water as this can seriously damage the electrical components. This will VOID your guarantee.
- Always remove the batteries if the unit is to be stored or not used for a while.
- Always use genuine Earlex replacement parts.

PLEASE NOTE

We have done all we can to ensure that used correctly and according to these instructions, the Earlex PR9 Autofeed Paint Roller will give long trouble free service. We accept no responsibility for damage caused by the use of incorrect or unsuitable substances, paint or fluids which have not been thinned correctly or are unsuitable for the surfaces to which they

are applied, health hazards arising from lack of ventilation when working in confined spaces, or failure of the equipment due to inadequate cleaning of components after use. If in doubt, always test a small inconspicuous area first. Always read the paint manufacturer's instructions first. Neither our guarantee nor the above statement affect your statutory rights.

ABOUT THE PR9

The PR9 Autofeed Paint Roller is designed to paint emulsions and water based paints by providing a continuous feed of paint to the roller head from the paint container. It is easy to use and will save you time when painting. It has a two speed motor to allow you to control the amount of paint being fed to the roller. The battery operated system means complete portability when painting your walls or ceilings. The kit includes the following:

Motor housing with 3 litre container, 2.4m

delivery tube, paint roller and handle, resting tray for roller, spares pack, shoulder strap and tap connector.

The container holds enough paint to cover four walls of an average size room 3.7m (12') x 2.7m (9'), without requiring to be refilled.

The PR9 requires four (4) x 1.5 volt (D size) ordinary or alkaline batteries. Ordinary batteries will provide you with up to approximately 12 hours use and alkaline batteries will provide you with up to approximately 60 hours use.

IMPORTANT

It is essential to clean the PR9 thoroughly when you have finished using it. Failure to do

so will result in blockages occurring and void the guarantee. Also remove the batteries when not using for long periods of time.

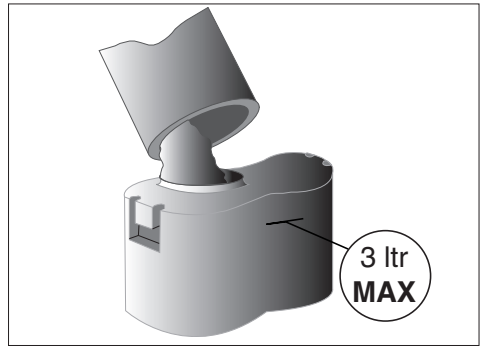
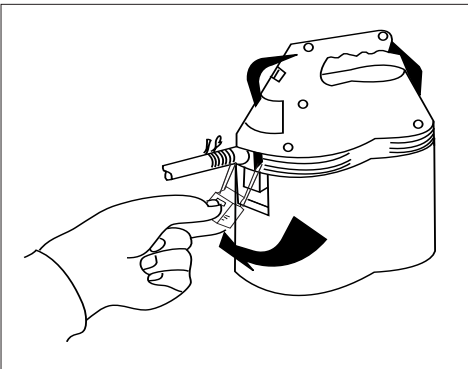
OPERATING INSTRUCTIONS

PAINT

Most water based paints and emulsions are able to be used direct from the can. However check the paint manufacturers instructions regarding thinning first. If the paint requires thinning, dilute with water (usually around 10%) and stir well. Paints will need to be stirred thoroughly before use in the PR9. However check the paint manufacturer's instructions on stirring first. The paint needs to be stirred thoroughly to mix the thicker paint which can settle to the bottom of the can (during transport and storage) and ensure an even consistency for the entire contents of the can. A couple of turns with a screwdriver is not enough to fully mix the paint, a paint stirrer long enough to reach the bottom of the paint can, must be used. The paint should be stirred thoroughly before any is used for cutting in corners or edges of the area to be painted. If the paint cannot be poured from the can immediately when the can is tipped then the paint will require thinning. **SOLID "GEL" TYPE PAINTS CANNOT BE USED IN THE PR9.** If you have tried to operate the unit with paint that is too thick, in addition to thinning the paint, you will need to remove the filter and clean this thoroughly before the pump will operate correctly.

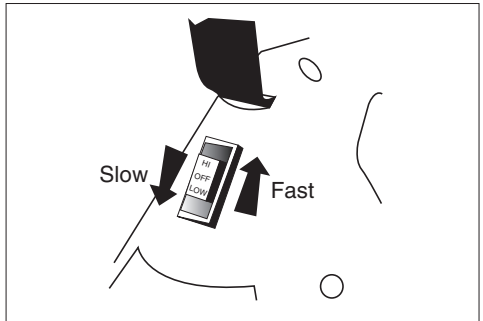
FILLING

Unclip top motor housing and pour the paint into the container, fill to a MAXIMUM of 3 litres. Refit the motor housing making sure that both clips are fully engaged.



CONNECTING

Connect the end of the delivery tube with the spring guard on it to the outlet spout of the paint unit and the other end to the base of the roller handle. Ensure both ends are firmly secured with the hose clips provided. Feed the shoulder strap through the handle ensuring that it will not release itself in operation, adjust strap as required. Insert 4 batteries into the battery compartment in the motor housing, ensuring the correct polarities.



SWITCHING ON

Moisten the roller with water and select "high" on the switch which will ensure the paint is pumped to the roller head in approximately five (5) minutes. Once paint has reached the head, adjust the setting to suit your speed of painting and the thickness of the paint. Apply the paint evenly with a smooth rolling action. If the lowest setting is still too fast to keep up with, occasionally slide the speed control to the "off" position, to allow you to disperse any excess paint. If using with the extension pole (optional accessory) always have the power setting on "high".

TAKING A BREAK

If you wish to take a short break, switch to the "off" position and place the roller into the resting tray supplied. Ensure the roller is not lower than the level of the paint in the paint container to avoid siphoning.

For breaks of up to 24 hours, slide the switch to the OFF position, place a plastic bag over the roller head, tying around the bag to ensure this is airtight. The roller must be kept above the level of the paint container.

CLEANING

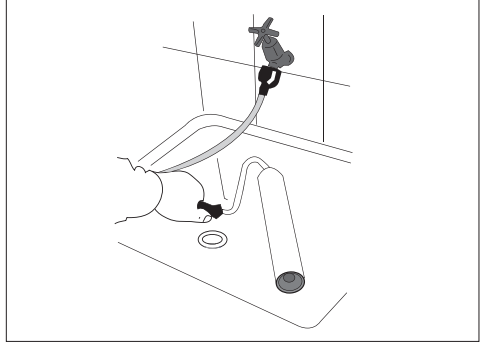
To consistently obtain the best results from your paint roller, it is essential that all the components are cleaned thoroughly once painting is completed. When cleaning the PR9 care must be taken to ensure that the tap adaptor is held in position to prevent spillage. As tap designs and water pressure may vary considerably, it is advisable to turn on the tap gently and gradually build up the pressure when using the tap connector to prevent it being forced off of the tap. Using warm water, washing up liquid and a brush will speed up the cleaning of the roller head, paint container and pump parts by breaking down the paint.

Unclip the top motor housing from the paint container and empty any remaining paint from the container back into the paint can. To recover the unused paint in the hose remove the hose from the top motor housing and the roller head. Connect the tap connector to one end of the hose, ensuring that it is firmly held in place with one of the hose clips. Hang the other end of the hose over the paint can, and push the tap connector onto a tap. Turn on the tap gently and gradually increase the water pressure to flush the paint from the hose. Do not turn the tap to full pressure immediately as this could force the tap connector off of the tap. Immediately turn off the tap when the hose is clear of paint. Once the hose is clean it can be used to rinse out the paint connector and the outside of the filter. The end of the hose can be pinched or partly blocked with a finger or thumb to create a jet of water which will speed up cleaning of the interior of the paint container.

When the paint container is clean, fill it with 3 litres of water and clip the top motor housing on. Position the unit so that the outlet is over a

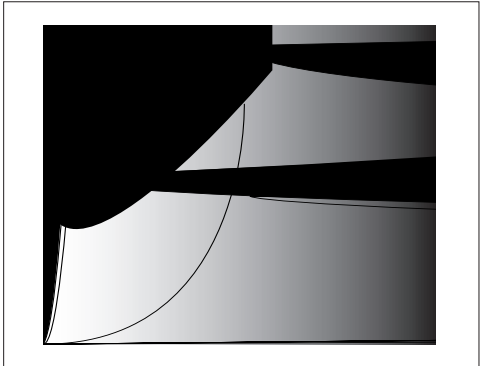
sink or drain and turn the unit on to high speed, the water pumping through will rinse out the pump mechanism.

Whilst the water is being pumped through the motor unit, re-connect the hose to the roller head, remove the tap connector from the tap and add some washing up liquid into the water in the hose. Re-connect the tap connector to the tap and gently turn on the tap gradually increasing the pressure to flush the washing up liquid through the roller head. Allow the tap to



run for a few minutes to clear as much paint as possible from the roller head.

Turn off the tap, remove the roller head from the hose and dismantle by undoing the screw in the end of the roller. Remove the roller from the handle and then remove the end plugs from the roller cover and remove the roller

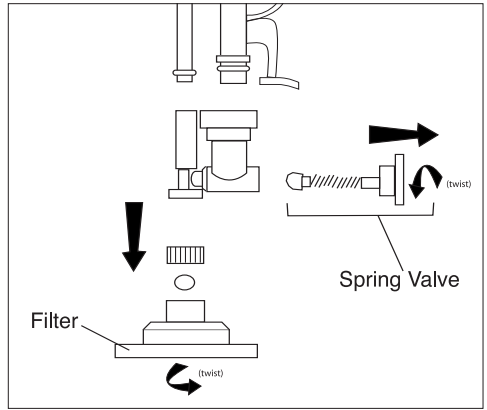


core. Wash any remaining paint from the roller parts in warm soapy water.

Finally when all the water has been pumped through the motor unit, unclip the top motor housing from the paint container.

To prevent dried paint from blocking the unit, unclip the filter strainer and outlet valve assembly. Then remove the filter strainer and outlet valve by first rotating them approximately 45 degrees anti-clockwise and then pulling.

The filter houses a small ball which is held in position by a plastic bridge. To access the ball remove the bridge by using a pair of long nose pliers, tweezers or similar tool for pulling. After removing the bridge the ball can now be tapped out for cleaning. Be careful not to loose the ball. A spare ball is supplied in the spares pack.



TROUBLE SHOOTING

SYMPTOM

Motor does not run:

REMEDY

Check the batteries are the right way round.
Check the batteries are not flat.

No paint is being fed to the roller:

Check that there is sufficient paint in the paint container. (The container can appear to be full from the outside when it is actually empty)
Check that there are no kinks or blockages in the delivery tube or roller.
Check that the unit has been thoroughly cleaned after last use.
Check that the filter is not blocked with particles of dried paint or dirt.
Check that the filter and outlet valve are fitted.
Check that the suction ball is fitted in the top of the filter.
Check that the suction ball and outlet valve are not blocked with dried paint.
Check that the paint has been stirred thoroughly and is not too thick.
Check that the unit is set to high speed. It can help to pump a small amount of water through the pump and delivery tube (not the roller, which should be damp) to speed up paint flow.

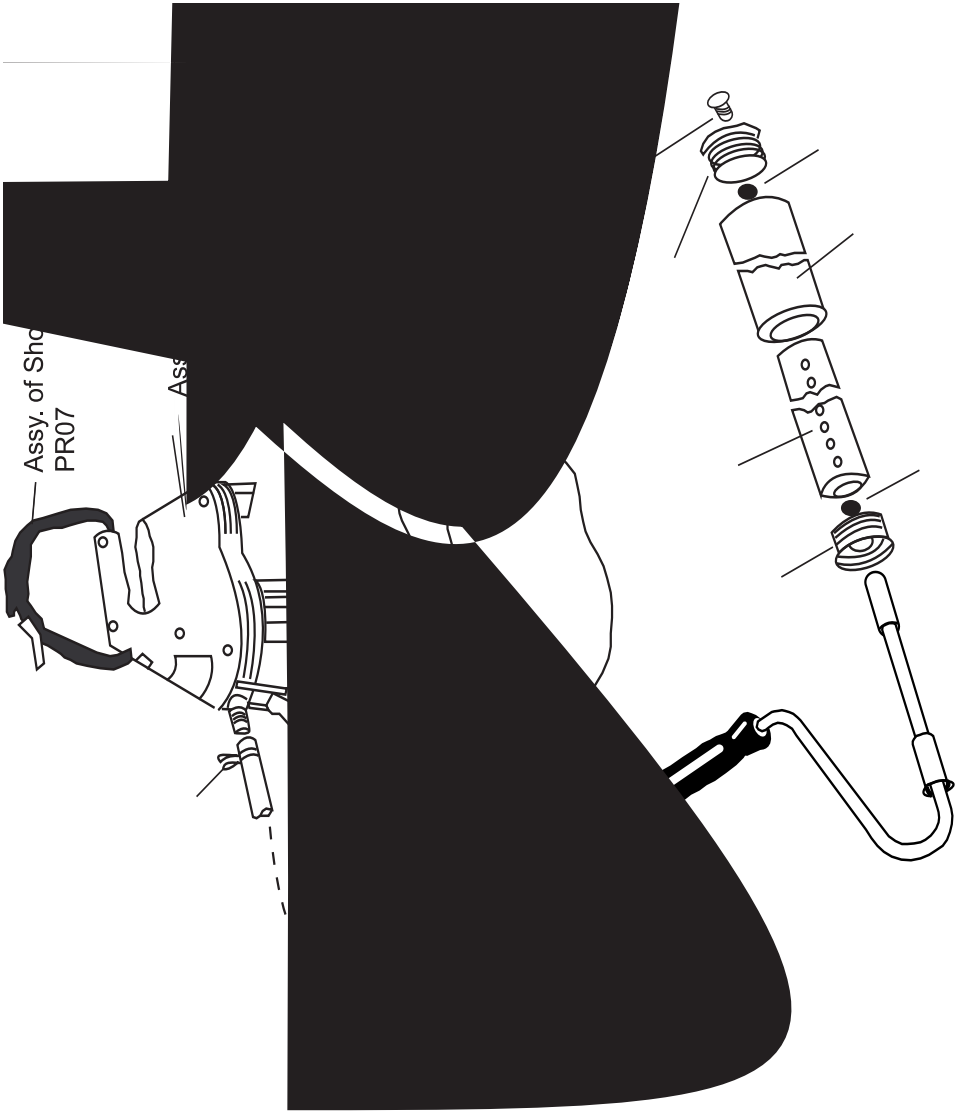
Unit will not run on High speed:

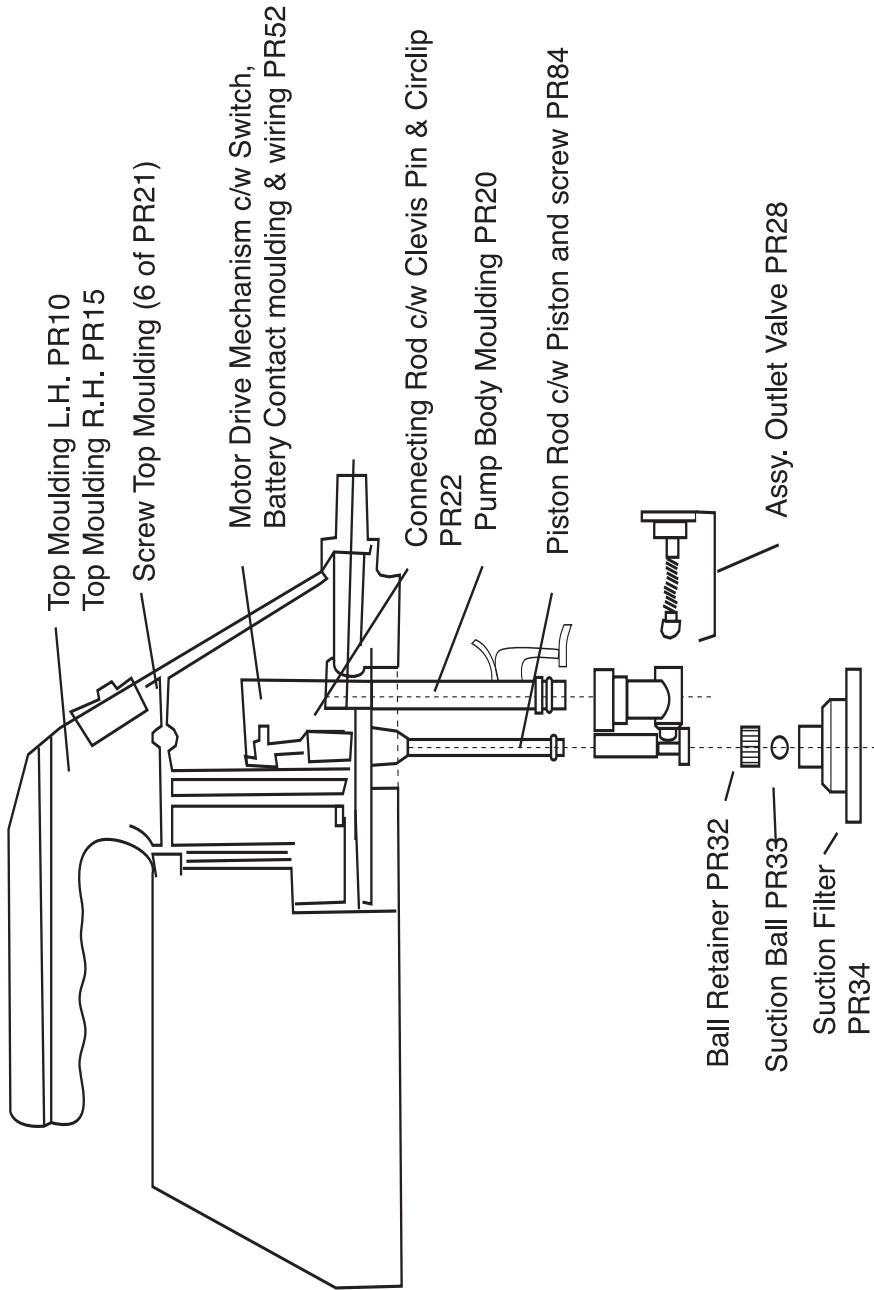
Check that the batteries are correctly installed.
Check that the batteries are not corroded or damaged.
Check that the batteries are not flat.

SPARES

A spares pack is supplied consisting of:
1 x PR28 Assembly outlet valve
1 x PR33 Suction ball
2 x PR40 Foam seal

If you need to replace a part, please refer to parts explosion diagram for fitting. If you require assistance or further spare parts please ring our helpline No. 01483 454666





EC Declaration of Conformity

We declare that the unit: PR9 conform to: 89/336/EEC, EN50082-1



Tim Hopper - Technical Director

OPTIONAL ACCESSORIES

PRA1 - A 1.4mtr extension pole which is ideal for painting hard to reach areas and ceilings.

PRA2 - Spare roller cover.

A range of steam cleaning accessories are also available to be used in conjunction with the steam wallpaper strippers. The accessories can be used to clean and rejuvenate carpets, floor tiles, unblock sinks or waste outlets, clean work surfaces, defrost fridges and freezers, clean windows and tiles, remove soiling from upholstery and curtains.

OTHER PRODUCTS FROM EARLEX

Earlex also manufacture a wide range of steam wallpaper strippers. Designed to remove all types of wallpaper, multi-layered painted papers and artex.

SS100 - 2300W 4.5 ltr steam wallpaper stripper

SS50 - 2000W 4.5 ltr steam wallpaper stripper

Alternatively the **Steama-Plus** combines the versatility of the steam wallpaper stripper with a selected range of the accessories providing you with a complete steam cleaning kit and wallpaper stripper.

SC165 - 1500W 4.5 ltr steam cleaning kit, incl. floor cleaner, window/tile cleaner, jet nozzle cleaner, upholstery cleaner/small steemplate, large wallpaper stripping plate.

ASG55 - The Super Sprayer electric spray gun is ideal for spraying wood preservatives, varnishes, water and oil based paints, enamels and wood stains.

GUARANTEE

This product is guarantee for a period of 24 months against faulty manufacture or materials. It is not guaranteed for industrial or hire purposes. This guarantee does not affect your statutory rights. In the event of any problem occurring please contact us on our Helpline no.01483 454666

HELPLINE NUMBER: 01483 454666



Earlex Limited ,
Moorfield Road, Slyfield Industrial Estate,
Guildford, Surrey, GU1 1RU, UK

Tel: +44 (0) 1483 454666.

Fax: +44 (0) 1483 454548

website: www.earlex.co.uk email: enquiries@earlex.co.uk

Free Manuals Download Website

<http://myh66.com>

<http://usermanuals.us>

<http://www.somanuals.com>

<http://www.4manuals.cc>

<http://www.manual-lib.com>

<http://www.404manual.com>

<http://www.luxmanual.com>

<http://aubethermostatmanual.com>

Golf course search by state

<http://golfingnear.com>

Email search by domain

<http://emailbydomain.com>

Auto manuals search

<http://auto.somanuals.com>

TV manuals search

<http://tv.somanuals.com>