

Earlex[®] **Pure Steam**[™] *Steam Cleaning Kit*

SAFETY & OPERATING INSTRUCTIONS



Thank you for purchasing the Earlex Pure Steam Cleaner. In order to obtain the best results, please read the instructions before commencing any work.

RETAIN FOR FUTURE REFERENCE

SAFETY RULES

- Keep equipment away from children and pets.
- Ensure boiler is placed on a flat level surface, and should the boiler become tilted in use - level again immediately. Failure to do so can result in severe over heating, complete element failure and void your guarantee.
- Block boiler unit securely if using on stairs.
- The boiler becomes hot in use. Move only by using the carrying handle.
- Steam is produced at 100°C. Be careful, wear protective clothing and protect your hands with heat resistant gloves or mitts.
- Never point hose or accessories at anyone.
- Never remove filler cap or detach hose whilst unit is operating.
- Never block the safety valve.
- Never use outside when raining.
- Switch off and wait for 2 minutes before removing filler cap to refill boiler.
- Do not overflow.
- Allow to cool completely before emptying boiler.
- Do not stand on boiler or hose.
- Do not drag or try to move boiler by pulling the mains lead.
- Do not allow water or steam to enter light switches and power points.
- Do not leave the unit unattended.
- Use only standard tap water. Never add detergents or chemicals.
- Extreme care must be taken if the unit is used in bathrooms. Always be aware of danger of electrocution from stored water in baths and sinks.
- Never change the accessories when the unit is operating.
- Always store upright.
- It is recommended that a RCD (residual current device) rated at 30mA is fitted into the mains supply socket for added protection against electric shock.
- Use only genuine Earlex replacement parts

PROTECT YOUR HOME!

The heat generated by the boiler unit can mark carpets, soft furnishings, table tops, cabinets etc. To prevent this we recommend placing the unit on a wooden board, tray or other barrier - making sure it will not slip off one side or tilt during use. Dust sheets or newspapers are not suitable heat protectors for delicate surfaces.

IMPORTANT NOTE

Always check the suitability of materials before steam cleaning and **do not use this product on Draylon® or similar materials**. Some carpets have stain-resistant treatments which can break down so always test a small area first to make sure that there are no unusual effects. Do not soak materials being cleaned. Only light application of steam is required.

The boiler has been designed for safe use but the user must be acutely aware that at all times steam is being produced, and steam is hot, so be careful, wear protective clothing and protect your hands with heat resistant gloves or mitts.

Pure Steam will clean most types of surfaces with the power of steam. The individual tools are specifically designed for different applications. These tools are illustrated on page 3.

Pure Steam does not require detergents, chemicals or other cleaners, it cleans naturally with the action of steam. This powerful action also removes any traces of powder or liquid cleaners or detergents that have been previously used.

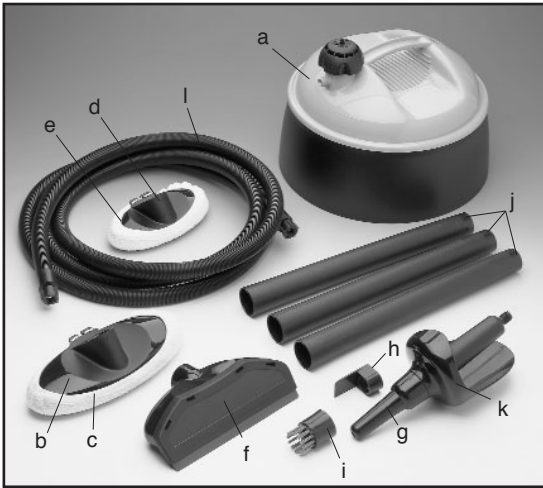
SAFETY CUT- OUT

A safety cut-out is fitted to prevent overheating of the element if water boils below the min. level. If unit stops boiling during use this may be the cause. Wait for 2 minutes before removing filler cap then re-fill with water. The cut-out will self reset and steam be produced again within 19 minutes. **The cut-out will not protect the element if a part filled unit is tilted during use in a way which enables part of the element to be out of the water for longer than 15-20 seconds.**

CHANGING TOOLS

Never remove the hose or change tools when the unit is plugged in. Wait 2 minutes after unplugging before changing tools. Screw the nut, which is on the end of the steam hose, onto the outlet of the tool - **hand tight only**.

COMPONENT LIST



| | |
|--------------------------------------|-------|
| a. Boiler | F78 |
| b Floor Cleaning Tool | AC254 |
| c Towel for Floor Cleaning Tool | AC275 |
| d Upholstery Cleaning Tool | AC250 |
| e Towel for Upholstery Cleaning Tool | AC276 |
| f Window/Tile Cleaner | AC258 |
| g Jet Nozzle | AC262 |
| h Scraper | AC21 |
| i Brush | AC25 |
| j Long Handle (3 tubes) | AC01 |
| k Universal Handle | AC302 |
| l 3.65 metre Steam Hose | ST94 |
| m Castors (not shown) | F17 |
| n 3 Metre Cord Set (not shown) | B17 |

CASTORS

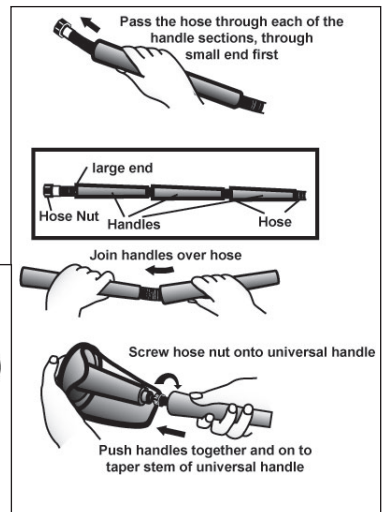
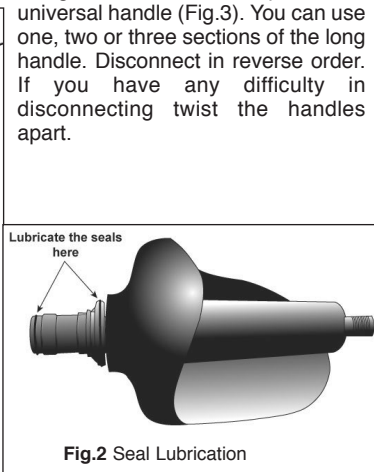
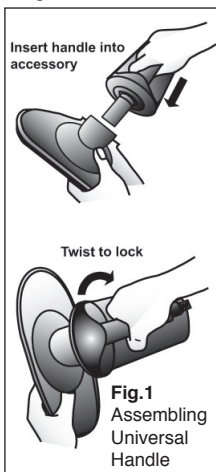
The castors are packed separately. Turn the boiler upside down and insert the 3 castors. These should be pushed in hard until they stop. Once installed these remain in place permanently.

ASSEMBLING THE ACCESSORIES

The Universal Handle is used in conjunction with the Floor Cleaner, Upholstery Cleaner, Window / Tile Cleaner and Jet Nozzle. Align the outline triangle on the handle with the triangle on the accessory. Push the handle into the accessory and twist so that the solid triangles on the handle and accessory are aligned (Fig.1).

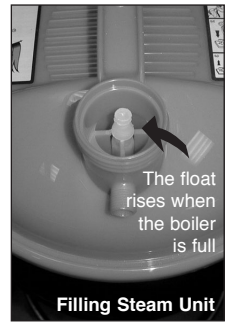
Over time, you may find that your steam cleaning accessories become awkward to assemble to the universal handle. This is due to the steam reducing the lubrication properties of the 'O' ring seals. In this event, simply lubricate the 'O' ring seals as illustrated (Fig.2) using washing-up liquid or furniture polish.

The Long Handle Attachment is designed to be used when cleaning floors or hard to reach areas. To assemble, pass hose through each of the long handle sections, in at the small end out at the large end. Screw the hose nut onto the universal handle and push the long handle tube sections together and onto the taper on the universal handle. Disconnect in reverse order.



OPERATING INSTRUCTIONS

Unscrew the filler cap and fill the boiler slowly until the float lifts up, approximately 4.5 ltrs. The maximum level will give you approx. 115 minutes of steam. **DO NOT OVERFILL.** Connect the end of the steam hose to the threaded outlet on the boiler neck. **DO NOT OVERTIGHTEN.** Connect the power cord to the boiler and then connect to the power supply. **Do not tilt in use.** Sometime prior to the steam being produced a small amount of bubbling will occur at the tool. **Be careful of any escaping hot water prior to steam emission.** If the unit requires refilling, unplug cord, wait for 2 minutes to cool down, then refill as per the above instructions. **BEWARE OF STEAM.** When you have finished, allow any remaining water to cool down before emptying the boiler. Never store cold water in the unit and always disconnect the hose before storage. Storage should be in an upright position only.



ACCESSORIES

FLOOR CLEANER

IMPORTANT: Some carpets have stain resistant treatments, which have varying active lives before breakdown. Accordingly it is best to try a small area of carpet that is normally unseen, then allow 24 hours to check whether the steam has any unusual effects on the carpet material. e.g. white streaks. **DO NOT CONTINUE USE.** - Check with your carpet supplier for further advice.

Used correctly the Floor Cleaner will refresh your carpets by removing surface grime, pet hairs etc. leaving the carpet looking brighter. It is not a dirt extraction system, so cannot necessarily remove deep stains or grease. Attempting to make it do this by longer application of steam may result in watermarking or staining.

Connect the Universal Handle and long handle to the Floor Cleaner head. Fit the cleaning towel to the head by placing the towel over the floor cleaner head and pulling drawstring tight. The drawstring can be secured at the back of the floor cleaner (Fig.4). Before using the Floor Cleaner, use a vacuum cleaner to pick up the larger dirt and grit particles. Having prepared the area, start the unit and wait for steam to appear at the accessory head.

Now begin to move the Floor Cleaning head over the carpet at a steady pace. If there are stains on the carpet pause for a few seconds to allow the steam time to penetrate.

Do not soak the carpet. Glide the Floor Cleaner over the surface. It is generally better and easier, to pull rather than push head across heavy pile carpets. Do not try to scrub the surface.

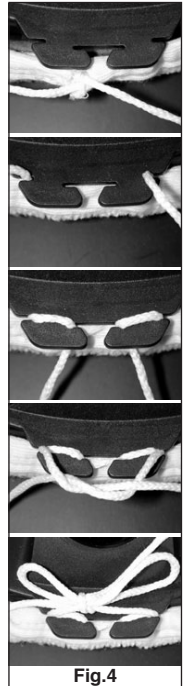
The towel will collect the dirt. Both sides of the towel can be used. Used towels can be washed out and reused. Wash at 90°C for maximum longevity. Do not use bleach or fabric conditioner. Use only one third of normal soap powder to avoid clogging of the fibres.

For extra towels, please use the spares order form at the back of this booklet. Alternatively call our customer service on 01483 454666.

The Floor Cleaner can also be used on other types of flooring such as ceramic, cork, marble, linoleum, stone, parquet etc. If you have an area to clean which has joints (such as tiles) it may be useful to use the brush attachment of the jet nozzle in order to clean completely. Be especially careful with parquet - older oak floors are very tough but on some newer floors steam may cause the blocks to swell.

One useful point to note is that steam will cause animal hairs to roll into easily removable balls.

This attachment can be used on car interiors, motor homes, painted doors, walls, louvres etc.



JET NOZZLE

Connect the universal handle to the jet nozzle head. Select the scraper head or brush to fit the nozzle end if required and push on to the nozzle.

Plug the boiler unit in and wait for steam to appear at the accessory head. **Beware of hot water discharge prior to steam emission.** This accessory can be used for cleaning all round the house, stoves, cupboards, work surfaces, toilets, sinks, lawnmowers etc. It both cleans and disinfects at the same time. It can also be used to defrost your freezer in minutes with no inconvenience. **Check with fridge/freezer manufacturer for advice before use.**



WINDOW/TILE CLEANER

IMPORTANT - You should only proceed at your own risk.

When cleaning exterior glass be extra careful not to pick-up any grit on the rubber blade - which could cause scratches.

Antique glass and stained glass may be brittle and can crack under extreme temperatures.

Do not use on glass at temperatures below 0°C.

Connect the universal handle and long handle to the window/tile cleaner head. Select the length of handle required (if any).

Plug the boiler unit in and wait for steam to appear at the accessory head. **Beware of hot water discharge prior to steam emission.** Steam will be emitted from the apertures on the accessory head. Move down the windows and clean with the rubber blade as the accessory travels down the surface. Always pull the accessory towards the handle so that the blade is acting after the steam. Do not push the accessory away from the handle. After you have completely finished cleaning, switch off the unit and clean the glass or tiles from top to bottom with the rubber blade only.

Steam will completely remove dust, film or greasy marks from windows, mirrors and patio doors. The window/tile cleaner will remove soap and grease residues but cannot remove deposits of scale. To remove black marks from grouting or corners use the jet nozzle with brush or scraper attachment.

UPHOLSTERY CLEANER

IMPORTANT: Some upholstery, fabrics or soft furnishings have stain resistant treatments, which have varying active lives before breakdown. Accordingly it is best to try a small area that is normally unseen, then allow 24 hours to check whether the steam has any unusual effects on the fabric material. If so, DO NOT CONTINUE. Check with your fabric or furnishing supplier for further advice.

Do not allow the material to become soaked. You only require a small amount of steam to clean, and soaking can leave water marks or cause bleed through from linings etc.

Connect the universal handle to the upholstery cleaner head. Fit the cleaning towel to the head in the same way as the Floor Cleaner (see page 4). Spare towels can be purchased from Earlex. Used towels can be washed out and reused. Wash at 90°C for maximum longevity. Do not use bleach or fabric conditioner. Use only one third of normal soap powder to avoid clogging of the fibres.

Curtains & Clothing

The upholstery cleaner head can also be used for removing the creases from hanging curtains and to clean and remove creases from overcoats, suits, jackets, trousers, etc.

DESCALING

To maintain peak performance of the unit, particularly in areas of hard water, it may be necessary to descale the element in the unit. Proprietary kettle descaling products can be used in your Steam Cleaning Kit - always follow the manufacturer's instructions.

TROUBLE SHOOTING

IF A PROBLEM OCCURS ALWAYS SWITCH THE UNIT OFF IMMEDIATELY.

| PROBLEM | CAUSE | ACTION |
|--|--|---|
| Unit fails to boil. | Safety cut-out has operated. Fuse has blown in lead. Power cord extension being used. Element burnt out due to tilting of unit in use or a chemical used in boiler. | Refill boiler making sure to cover the element, allow unit to cool for 20 mins then re-try. Replace with a 13 amp fuse only. Extension cables must be rated at at least 10 amps and fully unwound. A lower rating will trip out. The element cannot be replaced, you can buy a replacement boiler from our Service Department. |
| Unit leaks from Pressure Relief valve. | Dirty seal. Blockage/kink in hose. Blockage in inlet of tool. | Unplug the unit and allow to cool. Clean under the pressure relief valve head and the surface it sits on. Allow unit to cool then remove hose and check for blockages. When unit is cool check for obstruction in inlet. |

UNDER NO CIRCUMSTANCES FORCE THE PRESSURE RELIEF VALVE SHUT. THIS IS OPERATING FOR YOUR PROTECTION.



CUSTOMER SERVICE

Should the unit become damaged in any way it must immediately be disconnected from the power source and returned for inspection. Please retain original packing materials for this purpose and only return the component that is defective.

UNAUTHORISED REPAIR VOIDS WARRANTY.

IF YOU REQUIRE FURTHER ASSISTANCE PLEASE CONTACT OUR HELPLINE ON

Tel: 01483 454666 Fax: 01483 454548 email: enquiries@earlex.co.uk
Opening Hours: Monday - Friday 08:30 - 18:00 (Except Bank Holidays)

or write to: Earlex Ltd., 19 Moorfield Road, Slyfield Industrial Estate, Guildford, Surrey. GU1 1RU.

MAINS CONNECTION

Your unit will have been supplied with a mains lead with a fitted moulded plug. This is identified by the fuse holder in the base of the plug. Please read the following safety instructions before use.

1. If the moulded plug is cut off from the mains lead then the plug must be disposed of safely.

NEVER under any circumstances insert such a plug into a 13 amp socket.

2. **NEVER** under any circumstances use the appliance without the fuse cover fitted. This is the little cover fixed into the base of the plug to hold the fuse in place.

3. If you lose the fuse cover then please contact any electrical dealer for a replacement or ring our helpline.

4. A replacement fuse must be rated at 13 amp. The fuse must be manufactured and approved to BS1362.

5. IF IN ANY DOUBT PLEASE CONSULT AN ELECTRICIAN.

If you need to fit a plug to the mains lead, this should be done in accordance with the wiring instructions below, and will need to be fitted with a 13 amp fuse. If in doubt please consult an electrician.

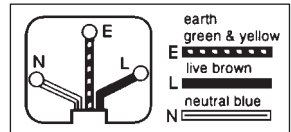
WARNING - THIS APPLIANCE MUST BE EARTHED. If you are using an extension lead it must be rated at a minimum of 10 amps and fully unwound. Do not operate with a lead rated at less than 10 amps as this will cause premature failure of the element which is not covered by the guarantee.

As the colours of the wires in the mains lead of this appliance may not correspond with the coloured markings identifying the terminals in your plug, proceed as follows:

The wire which is coloured green and yellow must be connected to the terminal in the plug which is marked with the letter E or by the earth symbol, or coloured green or green and yellow.

The wire which is coloured blue must be connected to the terminal which is marked with the letter N or coloured black.

The wire which is coloured brown must be connected to the terminal which is marked with the letter L or coloured red.



EARLEX LTD. WILL ACCEPT NO RESPONSIBILITY FOR THE USE OF THIS PRODUCT IF USED FOR ANY PURPOSES OTHER THAN THOSE DETAILED HEREIN.

GUARANTEE

This product is guaranteed for a period of 12 months against faulty materials and workmanship. Whilst every possible care is taken by Earlex to ensure that our products leave the factory in good working order, Earlex cannot under any circumstances accept liability for problems or damage caused by their subsequent use. It is the responsibility of the user to ensure that surfaces to be cleaned or stripped are suitable for steam. This guarantee does not affect your statutory rights. This guarantee excludes the use for hire purposes.

In the event of any problem occurring, please contact our helpline number.

EC Declaration of Conformity

We declare that the unit: SC150 conforms to: 73/23/EEC, EN60335-1, EN60335-2-15 & 89/336/EEC, EN55014-1, EN55014-2, EN61000-3-2, EN61000-3-3

Tim Hopper-Technical Director

Earlex Ltd.,
19 Moorfield Road,
Slyfield Industrial Estate,
Guildford, Surrey. GU1 1RU.
TEL: +44 (0) 1483 454666 FAX: +44 (0) 1483 454548
email: enquiries@earlex.co.uk
website: www.earlex.co.uk



Spare Cleaning Towels for Floor Cleaner and Upholstery Cleaner

Spare cleaning towels for the Floor Cleaner and Upholstery Cleaner accessories can be ordered direct from Earlex either by posting the order to us, or telephoning our Helpline for credit or debit card orders, on: 01483 454666 Monday – Friday 08:30 – 18:00 (Excluding Bank Holidays)

Payment can be made by Visa, Mastercard, Switch, Delta or Connect credit or debit cards.

Orders valued at £6.00 or over will be sent post free to anywhere in the U.K. Please add £1.00 for postage if the order is less than £6.00. Delivery to Republic of Ireland may incur additional postage charges.

Please return the completed form to:
Earlex Ltd., 19 Moorfield Road,
Slyfield Industrial Estate, Guildford, Surrey. GU1 1RU. UK.

✂-----
Name:.....

Address:.....
.....

Postcode:..... Daytime Tel. No.:.....

| Part No | Description | Qty | Price £ | Total |
|---------|---|-----|---------|-------|
| EA31 | Spare Towels for Floor Cleaner (pack of 3) | | 4.75 | |
| EA32 | Spare Towels for Upholstery Cleaner (pack of 3) | | 4.75 | |

Total

Add £1.00 if total less than £6.00

Total

I enclose a Cheque / Postal Order for £ made payable to Earlex Ltd. (No cash, stamps or COD). Or debit my Credit / Debit card.

Credit/Debit Card No

Expiry Date Issue Number (Switch) All above prices include VAT

Free Manuals Download Website

<http://myh66.com>

<http://usermanuals.us>

<http://www.somanuals.com>

<http://www.4manuals.cc>

<http://www.manual-lib.com>

<http://www.404manual.com>

<http://www.luxmanual.com>

<http://aubethermostatmanual.com>

Golf course search by state

<http://golfingnear.com>

Email search by domain

<http://emailbydomain.com>

Auto manuals search

<http://auto.somanuals.com>

TV manuals search

<http://tv.somanuals.com>