



Safety instructions

Ex-GSM 01



1	Application	2
2	Safety instructions	2
3	Errors and load restrictions	2
4	Safety regulations	3
5	Ex-data	3
6	Accessories	3
7	Technical Data	3
8	Operating instructions	4
8.1	Safety in traffic	4
8.2	Operating environment	4
8.3	Electronic equipment	4
8.3.1	Cardiac pacemaker	5
8.3.2	Hearing aid	5
8.3.3	Other medical equipment	5
8.3.4	Places with appropriate signs	5
8.4	Transport	6
8.4.1	Motor vehicles	6
8.4.2	Aircrafts	6
8.5	Emergency calls	6
9	Certification Information (SAR)	7
10	Commissioning	9
10.1	Getting started	9
10.1.1	Installing the SIM card and battery	9
10.1.2	Charging the battery	11
10.1.3	Switching the phone on and off	11
10.1.4	Keys and connectors	12
10.1.5	Changing the shell and key mat	13
10.1.6	Attaching the carrying strap to the phone	14
10.2	Standby mode	15
10.2.1	Main indicators in standby mode	16
10.2.2	Some useful shortcuts in standby mode	16
10.2.3	Keypad lock (Keyguard)	17
10.3	Telephone functions	17
10.3.1	Infrared	17
10.3.2	GPRS	17
10.3.3	Java™-Applications	18
10.3.4	Voice commands	18
10.3.5	Push to talk	18
10.3.6	E-Mails	19
10.4	Access codes	19
11	Repairs	20
12	Care and maintenance	20
13	Warranty and Liability	21
14	Certificate of Compliance	23
14.1	For USA	23
14.2	For Canada	25
15	Control Drawing	27

Note:

The current safety instructions, and the Ex-certificate are available for download from the relevant product page under www.ecom-ex.com; alternatively they can be requested directly from the manufacturer.

1 Application

The Ex-GSM 01 is a portable Non-Incendive cell phone for industrial use in explosion-hazardous areas of Class I, DIV 2, Groups A, B, C and D according to FM standards.

2 Safety instructions

These safety instructions contain information and safety regulations that must be followed to ensure safe and reliable operation of the unit under the described conditions. Failure to follow the information and instructions can have dangerous consequences or may contravene applicable regulations.

Please take the time to carefully read through the owner's manual before you start using the unit.

3 Errors and load restrictions

If there is any risk that the safety or integrity of the unit has been compromised, the unit must be taken out of operation immediately and removed from the Ex-area without delay.

Action must be taken to prevent the device from being accidentally placed into operation again.

We recommend that the unit should be sent to the manufacturer to be examined.

The safety and reliability of the unit may be at risk if, for example:

- visible damage is evident on the housing,
- the unit has been subjected to excessive loads for which it is not designed,
- the unit has been improperly stored,
- the unit has been damaged in transit,
- inscriptions or lettering on the unit are illegible,
- malfunctions occur,
- permitted tolerances or threshold values have been exceeded.

4 Safety regulations

Any person using the unit must observe the standard safety regulations and read the certificate to prevent incorrect operation or abuse of the unit.

The following additional safety regulations must also be observed:

- The unit must not be opened within the Ex-area.
- The battery must only be changed outside the Ex-zone.
- Additional or spare batteries must not be carried in the Ex-area.
- The battery must only be charged outside of the Ex-area with the appropriate/original charger.
- Only the battery module NOKIA BL- 5B may be used.
- It must be ensured that the unit is not taken into DIVISION 1.
- Only accessories approved by ecom instruments GmbH may be used.
- Avoid the use in aggressive acids and alkalis.

5 Ex-data



Report Job Identification No.: 3025128

FM-Indicator: NI/I/2/ABCD T6, Ta = 50°C

Intrinsically Safe for use in a Class I, Division 2, Groups A, B, C & D with a Temperature class of T6

6 Accessories

It is possible to connect the associated NOKIA headset HS-8 - other connections are not allowed inside hazardous areas.

The battery must be charged with the appropriate charging set outside of the hazardous area only.

7 Technical Data

Ambient temperature Ta: 14 °F to 122 °F (-10 °C to 50 °C)

Battery type: Standard Li-Ion Battery 760 mAh, NOKIA BL- 5B

Talk Time: Up to 5 hours

Standby Time: Up to 10 days

Battery talk and standby times are estimates only and depend on network configuration, signal strength, features used, battery age and condition, charging practices, temperatures to which battery is exposed, whether use is in digital mode (or analog mode, if any), and many other factors. Please note that the amount of time a phone is used for calls will affect its standby time. Likewise, the amount of time that the phone is turned on and in standby mode will affect its talk time.

Size:	4.1 in x 1.8 in x .9 in (10.6 cm x 4.7 cm x 2.4 cm)
Weight:	3.5 ounces (101 grams)

8 Operating instructions

Before using the equipment for the first time, please read the safety and operating instructions very thoroughly. Remember there is no vibra call in your modified ex-cell phone, please ignore all instructions in the original operating manual which describe the use and function of the vibra call. Further, the integrated camera is deactivated due to ex-relevant reasons.

8.1 Safety in traffic

NEVER attempt to hold a mobile phone in the hand whilst driving a motor vehicle. Never lay it on the passenger seat or in an unsecured place, as in the event of sudden braking or manoeuvres serious injury or damage may be caused by the unit being thrown around. Secure the phone in the holder provided for it.

***Never forget that:
Road safety has priority!***

8.2 Operating environment

The regulations valid for a particular area must be complied with under all circumstances. The mobile phone unit must always be switched off when the use of mobile telephones is forbidden or when interference could be caused which could result in dangerous situations.

The unit must always be held in the normal operating position. As parts of the telephone are magnetic, metal objects could be attracted. Particularly, persons with a hearing-aid should not use the on an ear which has a hearing-aid fitted. To prevent metal objects being attracted to the telephone, it should always be secured in the suitable holder provided for it. Never let a credit card or other device storing data magnetically come near the telephone as this could result in the data being erased.

8.3 Electronic equipment

Most modern electronic equipment is screened to prevent interference from so-called RF-signals (radio frequencies). However it is just possible that certain pieces of equipment are not screened against the RF-signals generated by your mobile telephone.

8.3.1 Cardiac pacemaker

The following instructions apply to persons fitted with a cardiac pacemaker:

- When the mobile phone unit is switched-on, ensure that a minimum distance of 20 cm between the mobile- phone unit and the Pacemaker is maintained.
- In order to help guarantee this distance, it is recommended that the mobile phone unit is not kept in a breast pocket.
- To minimise interference we recommend that the ear furthest away from the Pacemaker is used when using the mobile phone unit.
- Furthermore, we recommend that should you suspect that damage to the Pacemaker has been caused, you should switch the mobile phone unit off immediately. In order to guarantee the correct functioning of your Pacemaker, you should seek medical advice.

8.3.2 Hearing aid

In case of malfunctioning of certain types of hearing aid, please refer the problem to your local service provider.

8.3.3 Other medical equipment

As with other electronic equipment, your mobile phone can interfere with inadequately screened medical equipment. Should you need information on the screening needed to protect an item of medical equipment against external RF signals, please contact the doctor responsible or the manufacturer of the equipment. In general, to avoid malfunctioning, you should switch your mobile phone off in all health institutions where this is specifically requested by signs, labels or regulations.

Please remember:

In hospitals and other health institutions, equipment is used which is very susceptible to interference from external RF.

8.3.4 Places with appropriate signs

You should switch your mobile phone off wherever there are signs requesting this.

8.4 Transport

8.4.1 Motor vehicles

In certain circumstances, RF signals can interfere with the correct functioning of incorrectly installed or inadequately screened systems in your motor vehicle (e.g. electronically controlled fuel injection, electronic ABS - (Antilock Brake Systems), electronic speed controllers or airbag systems). You can obtain information about your vehicle from the manufacturer or his representative.

To be on the safe side and avoid malfunctioning, you should have your mobile phone built into your car by a qualified person. Incorrect installation or maintenance can have dangerous consequences.

Don't forget that these faults result in invalidation of the guarantee given with the unit.

We recommend a regular check of the parts of the mobile telephone installed in your vehicle. In the case of an accident in a vehicle fitted with airbag(s), these are filled with great force. In order to minimize the risk of injury or malfunctioning, no parts should be installed in the space that would be taken up by the inflated airbag

8.4.2 Aircrafts

The use of mobile phones in aircrafts is normally forbidden. You should therefore switch the mobile phone off before boarding the aircraft. Because the use of a mobile telephone on board an aircraft can have dangerous consequences, failure to comply with this regulation can result in the mobile telephone services of the offender being suspended or denied and/or legal action taken against the offender.

8.5 Emergency calls

Because a 100% coverage of the mobile-telephone network is technically very difficult to realize, a connection cannot be guaranteed in all situations and locations.

We therefore recommend that you do not rely entirely on the mobile telephone when it is question of communication in a medical emergency. A guaranteed acceptance of an emergency call is also not possible when additional telephone functions or net services are activated. Information on this subject can be obtained from the mobile telephone operator.

Procedure in the event of an emergency call:

1. Switch the telephone on if it is not already switched on. Check whether the signal strength is adequate. In certain networks it may be necessary to plug a valid SIM card into the telephone.
2. Press the red off / END key as many times as is necessary (e.g. to end call or quit a menu etc.) to erase the display and prepare the mobile telephone for making a call.
3. Enter the emergency number (e.g. 911, 112 or some other official emergency number) which is valid for your current location. The emergency numbers vary from place to place.
4. Press the green call / SEND key.

Important :

If you happen to have activated several functions, it may be that you must switch them off first before you can make the emergency call.

9 Certification Information (SAR)

THIS DEVICE MEETS THE GOVERNMENT'S REQUIREMENTS FOR EXPOSURE TO RADIO WAVES.

Your wireless phone is a radio transmitter and receiver. It is designed and manufactured not to exceed the emission limits for exposure to radio frequency (RF) energy set by the Federal Communications Commission of the U.S. Government. These limits are part of comprehensive guidelines and establish permitted levels of RF energy for the general population. The guidelines are based on standards that were developed by independent scientific organizations through periodic and thorough evaluation of scientific studies. The standards include a substantial safety margin designed to assure the safety of all persons, regardless of age and health.

The exposure standard for wireless mobile phones employs a unit of measurement known as the Specific Absorption Rate, or SAR. The SAR limit set by

the FCC is 1.6 W/kg*. Tests for SAR are conducted using standard operating positions accepted by the FCC with the phone transmitting at its highest certified power level in all tested frequency bands. Although the SAR is determined at the highest certified power level, the actual SAR of the phone while operating can be well below the maximum value. This is because the phone is designed to operate at multiple power levels so as to use only the power required to reach the network. In general, the closer you are to a wireless base station antenna, the lower the power output.

Before a phone model is available for sale to the public, it must be tested and certified to the FCC that it does not exceed the limit established by the government-adopted requirement for safe exposure. The tests are performed in positions and locations (for example, at the ear and worn on the body) as required by the FCC for each model.

The highest SAR value for this model phone as reported to the FCC when tested for use at the ear is 1.26 W/kg, and when worn on the body, as described in this user guide, is 1.29 W/kg. (Body worn measurements differ among phone models, depending upon available enhancements and FCC requirements).

While there may be differences between the SAR levels of various phones and at various positions, they all meet the government requirement. The FCC has granted an Equipment Authorization for this model phone with all reported SAR levels evaluated as in compliance with the FCC RF exposure guidelines. SAR information on this model phone is on file with the FCC and can be found under the Display Grant section of <http://www.fcc.gov/oet/fccid> after searching on FCC ID LJPNPL-4.

For body worn operation, this phone has been tested and meets the FCC RF exposure guidelines for use with a carry case, belt clip, or holder that contains no metal and that positions the headset a minimum of 5/8-inch (1.5 cm) from the body. Use of other carry cases, belt clips, or holders may not ensure compliance with FCC RF exposure guidelines. If you do not use a body-worn accessory and are not holding the phone at the ear, position the handset a minimum of 5/8-inch (1.5 cm) from your body when the phone is switched on.

* In the United States and Canada the SAR limit for mobile phones used by the public is 1.6 watts/kilogram (W/kg) averaged over one gram tissue. The

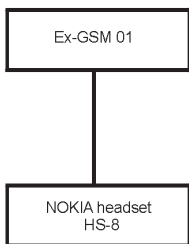
standard incorporates a substantial margin of safety to give additional protection for the public and to account for any variations in measurements. SAR values may vary depending on national reporting requirements and the network band. For SAR information in other regions please look under the product information at www.nokia.com.

10 Commissioning

How to connect the Ex-GSM 01 cell phone with the power outlet outside the hazardous areas see following diagram.

Hazardous (Classified) Location

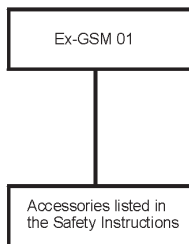
Class I, Division 2, Groups A, B, C and D



Only for connection to NOKIA headset type HS-8

- No other connections allowed -

Nonhazardous Location



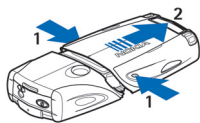
Control drawing number: 0163EX04A

10.1 Getting started

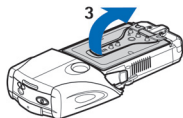
10.1.1 Installing the SIM card and battery

Keep all SIM cards out of the reach of small children. For availability and information on using SIM card services, contact your SIM card vendor. This may be the service provider, network operator, or other vendor.

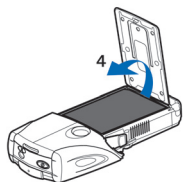
Always switch the device off and disconnect the charger before removing the battery.



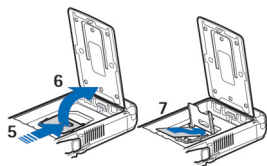
- 1 – With the back of the phone facing you, press the indentations on both sides of the lower shell.
- 2 – Slide the bottom of the shell off to remove it.



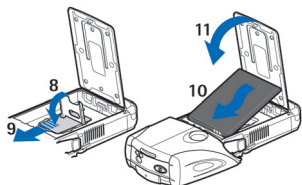
- 3 – Grasp the removal flap, and gently pull it up.



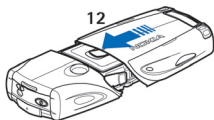
- 4 – Lift the battery from the compartment.



- 5 – Slide the cover of the SIM card holder toward the bottom end of the phone until it unlocks.
- 6 – Swing the cover of the SIM card holder open.
- 7 – Insert the SIM card into the holder. Ensure that the beveled corner of the SIM card is on the left, and the golden contact area is facing downward.



- 8 – Close the cover of the SIM card holder.
- 9 – Slide the cover of the SIM card holder toward the top end of the phone until it locks into place.
- 10 – Position the battery with the contacts aligned to the golden contacts on the phone. Insert the battery into the battery slot, contact end first.
- 11 – Close the battery flap.

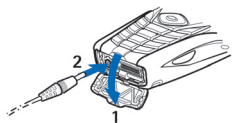


- 12 – Place the phone into the lower shell, sliding the shell forward until it locks into place.

10.1.2 Charging the battery

Warning: Use only batteries, chargers, and enhancements approved by Nokia for use with this particular model. The use of any other types may invalidate any approval or warranty, and may be dangerous.

The Ex-GSM 01 mobile phone must only be charged outside of the Ex-hazardous areas and only with an approved battery charger type. Check the model number of any charger before use with this device. This device is intended for use when supplied with power from ACP-12, ACP-7, ACP-8 and AC-1.



- 1 – Open the flap on the bottom of the phone.
- 2 – Connect the lead from the charger to the socket on the bottom of the phone.
- 3 – Plug the charger into a standard wall outlet.

The battery indicator scrolls on the display during charging. Charging is displayed briefly if the phone is switched on. If the battery is completely discharged, it may take a few minutes before the charging indicator appears on the display, or before calls can be made.

You can use the phone while the charger is connected.

The charging time depends on the charger and the battery used.

10.1.3 Switching the phone on and off

Your device has an internal antenna.

Note: As with any other radio transmitting device, do not touch the antenna unnecessarily when the device is switched on. Contact with the antenna affects call quality and may cause the device to operate at a higher power level than otherwise needed. Avoiding contact with the antenna area when operating the device optimises the antenna performance and the battery life.



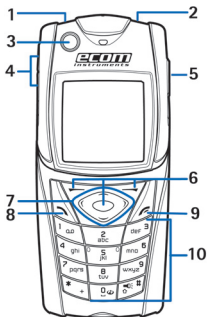
Hold the phone as you would any other telephone with the antenna pointed up and over your shoulder.


To switch the phone on or off, press and hold the power key.




If the phone displays Insert SIM card, even though the SIM card is properly inserted or SIM card not supported, contact your service provider. If the phone asks for a PIN code or security code, enter the code, and press OK.

10.1.4 Keys and connectors

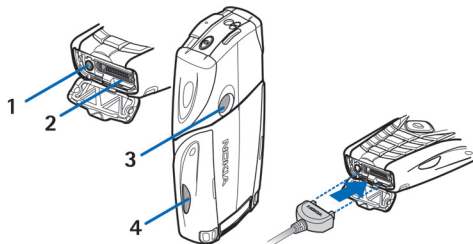


- 1 – Flashlight. To activate the flashlight, press and hold in standby mode.
- 2 – Power key, to turn the phone on and off.
- 3 – Bubble level, to level the phone while using the compass.
- 4 – Volume keys, to adjust the volume of the earpiece or loudspeaker, or the headset when connected to the phone.
- 5 – Push to talk key
- 6 – Left selection key, middle selection key, and right selection key. The function of these keys depends on the guiding texts shown above the keys on the display.
- 7 – Four-way scroll key, to scroll through the menu, for example, or to move the cursor when writing text.
- 8 – Call key , to dial a phone number, or to answer a call.

9 – End key  , to end a call, or to exit functions.

10 – Keys  -  , to enter numbers and characters.

Keys  and  are used for various purposes in different functions.



1 – Charger connector

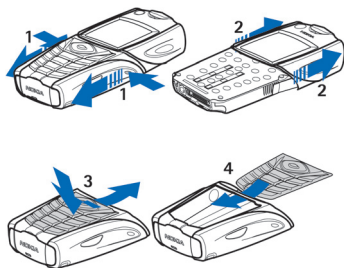
2 – Pop-Port™ connector used, for example, for headsets and the data cable (please refer to the control drawing number: 0163EX04A for allowed connections to Ex-GSM 01).

3 – Camera lens (deactivated)

4 – Infrared (IR) port

10.1.5 Changing the shell and key mat

Note: Do not open the device inside Ex-hazardous areas. Before removing the cover, always switch off the power and disconnect the charger and any other device. Avoid touching electronic components while changing the covers. Always store and use the device with the covers attached.

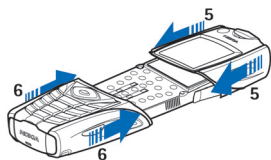


1 – With the back of the phone facing you, press the indentations on both sides of the lower shell. Slide the bottom of the shell off to remove it.

2 – To remove the top shell, slide it upwards.

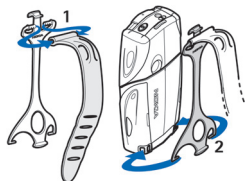
3 – To remove the key mat from the lower shell, push it down, and pull it out of the shell.

4 – To replace the key mat, slide it into the lower shell, and press it into place.

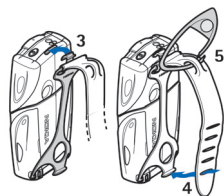


- 5 – Slide the upper shell onto the phone.
- 6 – Slide the lower shell onto the phone until it clicks into place, meeting the upper shell.

10.1.6 Attaching the carrying strap to the phone



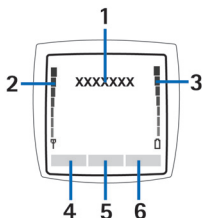
- 1 – Connect the elastic band to the holster.
- 2 – Connect the pins on the end of the holster to the holes in the lower end of the phone.






- 3 – Connect the pin on the other end of the holster to the hole in the top end of the phone.
- 4 – Wrap the elastic band, for example, around your wrist and connect the band to the holster.
- 5 – Connect the hook to the loop on the elastic band. The hook contains a magnifying glass and a whistle.









10.2 Standby mode















When the phone is ready for use, and you have not keyed in any characters, the phone is in standby mode.










- 1 -Shows the name of the network or the operator logo to indicate the cellular network in which the phone is currently being used.
- 2 -Shows the signal strength of the cellular network at your current location. The higher the bar, the stronger the signal.
- 3 -Shows the battery charge level. The higher the bar, the more power in the battery.
- 4 -The left selection key  in standby mode is **Go to**. You can use the key as a shortcut to your favorite functions. To view the list of functions that you have on your personal shortcut list, press **Go to**. To activate a function, scroll to it, and press **Select**.
To add more functions to the shortcut list, press **Options**, select **Select options**, and the list of available functions is shown. Scroll to a function, and press **Mark** to add it to the shortcut list. To remove a function from the list, press **Unmark**.
To arrange the functions on the shortcut list, press **Options**, and select **Organise**. Scroll to the function that you want to move, press **Move**, and select where you want to move the function.
If there are no functions in the shortcut list, press **Add** to add a function.
- 5 -The middle selection key  in standby mode is **Menu**.
- 6 -The right selection key  in standby mode may be **Names** to access the **Contacts** menu, an operator-specific key to access an operator's homepage, or a specific function that you have selected in the **Right selection key** menu.

10.2.1 Main indicators in standby mode


-  One or more text messages or picture messages are received.
-  or  Your phone is connected to the chat service, and the availability status is online or offline.
-  One or more chat messages are received when you are connected to the chat service.
-  The phone keypad is locked.
-  The phone does not ring for an incoming call or text message when Incoming call alert is set to Off, or none of the caller groups has been set to alert in the Alert for setting, and Message alert tone is set to Off.
-  The alarm clock is set to On.
-  The countdown timer is running.




-  The stopwatch is running.
-  The GPRS connection mode Always online is selected and the (E)GPRS service is available. The indicator for GPRS and EGPRS is the same.
-  An (E)GPRS connection is established.
-  The (E)GPRS connection is suspended (on hold), for example, if there is an active call during an (E)GPRS dial-up connection.
-  When the infrared connection is activated, the indicator is shown continuously.
- 2** If you have two phone lines, the second phone line is indicated.
-  All incoming calls are diverted to another number.
-  The loudspeaker is activated, or the music stand is connected to the phone.
-  Calls are limited to a closed user group.
-  ,  ,  A headset, handsfree, or loopset is connected to the phone.
-  The timed profile is selected.
-  or  Push to talk connection is active or suspended.

10.2.2 Some useful shortcuts in standby mode

- To access the list of dialed numbers, press  . Scroll to the number or name that you want, and press  to call the number.
- To call your voice mailbox, press and hold  .
- To make a connection to a browser service, press and hold  .
- To open the push to talk **Group list**, press  .
- To find a contact name, press  .
- To start writing a text message, press  .

10.2.3 Keypad lock (Keyguard)

The keyguard disables your keypad to prevent accidental key presses. When the keypad lock is on, calls still may be possible to the official emergency number programmed into your device. Key in the emergency number and press  .

- To lock the keypad in standby mode, press **Menu** and  within 1.5 seconds.
- To unlock the keypad, press **Unlock** and  within 1.5 seconds.
- To answer a call when the keyguard is on, press . During a call, the phone can be operated normally. When you end or reject a call, the keypad automatically locks again. You can set whether the keyguard locks automatically or requires a code to unlock.

10.3 Telephone functions

The Ex-GSM 01 includes functions which are very useful in everyday life, e.g. clock, alarm-clock, countdown timer, games, calculator, calendar and task list. Due to Ex-relevant reasons, the internal vibration motor had to be removed. ecom instruments GmbH advises against the use of an external vibrating unit outside of the Ex-area since it could damage the mobile phone.

10.3.1 Infrared

Note: Do not point the IR (infrared) beam at anyone's eye or allow it to interfere with other IR devices. This device is a Class 1 laser product.

To use an IR connection, the compatible device with which you want to establish a connection must be IrDA compliant.

When sending and receiving data using IR, ensure that the IR ports of the sending and receiving devices are pointing at each other and that there are no obstructions between the two devices. The preferable distance between the two devices in an IR connection is 3.28 feet (1 meter) at most.

To activate the IR port of your phone to receive data using IR, press **Menu**, and select **Settings** ⇒ **Connectivity** ⇒ **Infrared**. If the data transfer is not started within 2 minutes after the activation of the IR port, the connection is cancelled and must be restarted.

10.3.2 GPRS

General Packet Radio Service (GPRS) technology is a network service that allows mobile phones to be used for sending and receiving data over an Internet protocol (IP) –based network. GPRS enables wireless access to data networks such as the Internet.

Enhanced GPRS (EGPRS), uses enhanced data rates for global evolution (EDGE), a radio interface modulation technique, to increase the data rates of GPRS.

The functions of your phone that may use (E)GPRS are messaging, browsing pages, e-mail, remote synchronization, application downloading, and the PC dialup (for example, Internet and e-mail).

Before you can use (E)GPRS technology:

- you must apply for the (E)GPRS service. Information on the availability and pricing conditions of using (E)GPRS can be obtained from your network operator or service provider.
- you must store the settings for the applications which are allowed to make use of (E)GPRS.

10.3.3 Java™-Applications

Your mobile phone supports Java™ Applets. This mobile phone already contains several Java™ applications which were specially developed for mobile phones. You can install further programmes in your telephone by using a PC and appropriate software.

10.3.4 Voice commands

The telephone is equipped with several voice commands:

- **voice dialing**
you can make a phone call by saving a voice tag you recorded for a contact. Voice tags allow you to make calls without keying the number.
- **voice messages**
The voice mailbox is a network service. For more information and for your voice mailbox number, contact your service provider.
- **voice recording**
recording of short voice messages for up to 3 minutes.

10.3.5 Push to talk

Push to talk over cellular (PTT) is a two-way radio service available over a GSM/GPRS cellular network. Push to talk provides direct voice communication connected with the push of the PTT key.

You can use push to talk to have a conversation with one person or with a

group of people having compatible devices. When your call is connected, the person or group you are calling does not have to answer the phone. Besides the GPRS counters, the phone registers only one-to-one calls in the recent call list in **Call log**. The participants should confirm the reception of any communications where appropriate as there is no other confirmation whether the recipient(s) have heard the call.

To check availability and costs, and to subscribe to the service, contact your network operator or service provider. Note that roaming services may be more limited than normal calls.

Before you can use the push to talk service, you must define the required push to talk service settings.

While you are connected to the push to talk service, you can use the other functions of the phone. The push to talk over cellular service is not connected to traditional voice communication, and therefore many of the services available for traditional voice calls (for example, voice mailbox) are not available for push to talk over cellular communications.

10.3.6 E-Mails

You can use your mobile phone to send and receive e-mails. Information on the availability and conditions of using the e-mail service can be obtained from your network operator or service provider.

10.4 Access codes

• **Security code**

The security code (5 to 10 digits) protects your phone against unauthorized use. The pre-set code is 12345. Change the code, and keep the new code confidential and in a safe place separate from your phone. You can set whether the phone requests the code. If you key in an incorrect security code five times in succession, the phone ignores further entries of the code. Wait for 5 minutes and key in the code again.

• **PIN and PIN2 codes (4 to 8 digits), module PIN, and signing PIN**

The personal identification number (PIN) code protects your SIM card against unauthorized use. The PIN code is usually supplied with the SIM card.

Set the phone to request the PIN code each time the phone is switched on.

The PIN2 code may be supplied with the SIM card and is required to access some functions.

The module PIN is required to access the information in the security module. The module PIN is supplied with the SIM card if the SIM card has a security module in it.

The signing PIN is required for the digital signature. The signing PIN is supplied with the SIM card if the SIM card has a security module in it.

If you key in an incorrect PIN code three times in succession, the phone may display PIN blocked or PIN code blocked PIN code blocked, for example, and ask you to enter the PUK code.

- **PUK and PUK2 codes (8 digits)**

The personal unblocking key (PUK) code is required to change a blocked PIN code. The PUK2 code is required to change a blocked PIN2 code.

If the codes are not supplied with the SIM card, contact your local service provider for the codes.

- **Barring password (4 digits)**

The barring password is required when using the **Call barring service**. You can obtain the password from your service provider.

- **Wallet code (4 to 10 digits)**

The wallet code is required to access wallet services. If you key in an incorrect wallet code three times, the wallet application is blocked for 5 minutes. After the next three incorrect attempts, the length of time for which the application is blocked will be doubled.

11 Repairs

Repair work is subject to the nationally valid regulations and directives. We therefore recommend that such work be performed by ecom instruments GmbH, Germany, as all repairs must be examined to ensure functional safety.

12 Care and maintenance

Your device is a product of superior design and craftsmanship and should be treated with care. The suggestions below will help you protect your warranty coverage.

- Keep the device dry. Precipitation, humidity and all types of liquids or moisture can contain minerals that will corrode electronic circuits. If your

device does get wet, remove the battery and allow the device to dry completely before replacing it.

- Do not use or store the device in dusty, dirty areas. Its moving parts and electronic components can be damaged.
- Do not store the device in hot areas. High temperatures can shorten the life of electronic devices, damage batteries, and warp or melt certain plastics.
- Do not store the device in cold areas. When the device returns to its normal temperature, moisture can form inside the device and damage electronic circuit boards.
- Do not attempt to open the device other than as instructed in this guide.
- Do not drop, knock, or shake the device. Rough handling can break internal circuit boards and fine mechanics.
- Do not use harsh chemicals, cleaning solvents, or strong detergents to clean the device.
- Do not paint the device. Paint can clog the moving parts and prevent proper operation.
- Use only the supplied or an approved replacement antenna. Unauthorised antennas, modifications, or attachments could damage the device and may violate regulations governing radio devices.

All of the above suggestions apply equally to your device, battery, charger, or any enhancement. If any device is not working properly, take it to the nearest authorized service facility for service.

It is recommended that the manufacturer checks and tests the Ex-safety components and operation of the unit every 2 years.

13 Warranty and Liability

For this product, ecom Instruments GmbH warrants the function and material for a period of two years beginning on the date of the purchase under normal operating and maintenance conditions. Wearing parts, rechargeable and non-rechargeable batteries are exempt from this. A six-month warranty applies to rechargeable batteries.

The warranty does not apply to products which are improperly used, modified, neglected, damaged in accidents or exposed to abnormal operating conditions. Claims under the warranty can be made by returning the defective

equipment to the manufacturer. We reserve the right to repair, renew the settings or exchange the device.

The above-mentioned warranty conditions are the sole and only right of the purchaser to compensation, are exclusively valid and replace all other contract or legal warranty obligations. ecom instruments GmbH accepts no responsibility for special, direct, indirect, accompanying or consequential damage as well as losses including the loss of data which may arise through the use or acquisition of the equipment independent of whether it was caused by violation of the warranty obligation, lawful or unlawful action, action in good faith or any other action.

If in certain countries the limitation of a legal warranty as well as the exclusion or limitation of accompanying or consequential damage is not permissible, it may be that the abovementioned limitations and exclusions are not valid for every purchaser. Should any such clauses of these warranty terms be declared null and void or not realisable by a competent court, then the effectiveness or enforceability of any of the other conditions of these guarantee terms will be unaffected by the court decision.

Note about the protection of minors:

This mobile phone, suitable for programs and games, may only be accessible to a child or young person in public when the programs or games on the unit have been approved and identified by the highest federal state authority or an organization for voluntary self-monitoring, or when they are using information, instruction or educational programs, that have been designated as "Info program" or "Educational program" by the supplier.

14 Certificate of Compliance
14.1 For USA



Member of the FM Global Group

FM Approvals
1151 Boston-Providence Turnpike
P.O. Box 9102 Norwood, MA 02062 USA
T: 781 762 4300 F: 781 762 9375 www.fmaglobal.com

CERTIFICATE OF COMPLIANCE

HAZARDOUS (CLASSIFIED) LOCATION ELECTRICAL EQUIPMENT

This certificate is issued for the following equipment:

Ex-GSM 01. Nonincendive Cellular Telephone.

NI / I / 2 / ABCD / T6 Ta = 50 °C; - 0163EX04A00G

Special Condition for use:

1. *The battery, NOKIA BL- 5B, must be charged with the associated charging set outside of the hazardous area only.*

Equipment Ratings:

Suitable for Class I, Division 2, Groups A, B, C, and D

Approved for:

ecom instruments
Assamstadt, Germany



A Division of the FM Global Group

This certifies that the equipment described has been found to comply with the following FM Approval Standards and other documents:

Class 3600	1998
Class 3611	2004

Original Project ID: 3025128

FM Approval Granted:

10/26/05

Subsequent Revision Reports / Date FM Approval Amended

Report Number Date

Report Number Date

FM Global Technologies LLC

George A. Smith
Assistant Vice President
FM Approvals

10/26/05
Date



FM Approvals
1151 Boston-Providence Turnpike
P.O. Box 9102 Norwood, MA 02062 USA
T: 781 762 4300 F: 781 762 9375 www.fmglobal.com

CERTIFICATE OF COMPLIANCE

HAZARDOUS LOCATION ELECTRICAL EQUIPMENT PER CANADIAN REQUIREMENTS

This certificate is issued for the following equipment:

Ex-GSM 01. Nonincendive Cellular Telephone.

NI / I / 2 / ABCD / T6 Ta = 50 °C; - 0163EX04A00G

Special Condition for use;

1. *The battery, NOKIA BL- 5B, must be charged with the associated charging set outside of the hazardous area only.*

Equipment Ratings:

Suitable for Class I, Division 2, Groups A, B, C, and D.

Approved for:

ecom instruments
Assamstadt, Germany



This certifies that the equipment described has been found to comply with the following FM Approval Standards and other documents:

C22.2 No. 213	1987
C22.2 No. 142	1987
C22.2 No. 94	1991

Original Project ID: 3025128

FM Approval Granted:

10/26/05

Subsequent Revision Reports / Date FM Approval Amended

Report Number	Date	Report Number	Date
---------------	------	---------------	------

FM Global Technologies LLC

George A. Smith
Assistant Vice President
FM Approvals

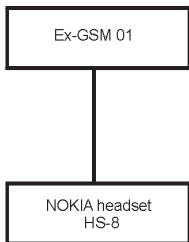
10/26/05
Date

15 Control Drawing

How to connect the Ex-GSM 01 cell phone with the power outlet outside the hazardous areas see following diagram.

Hazardous (Classified) Location

Class I, Division 2, Groups A, B, C and D

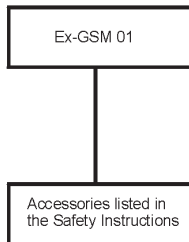


Only for connection to NOKIA
headset type HS-8

- No other connections allowed -

Control drawing number: 0163EX04A

Nonhazardous Location





ecom instruments GmbH

Industriestr.2
97959 Assamstadt
Germany

Tel.: +49 (0) 62 94 / 42 24-0
Fax: +49 (0) 62 94 / 42 24-90
E-Mail: sales@ecom-ex.com

Subject to change without notice!

0163AL01A01 11/05

Free Manuals Download Website

<http://myh66.com>

<http://usermanuals.us>

<http://www.somanuals.com>

<http://www.4manuals.cc>

<http://www.manual-lib.com>

<http://www.404manual.com>

<http://www.luxmanual.com>

<http://aubethermostatmanual.com>

Golf course search by state

<http://golfingnear.com>

Email search by domain

<http://emailbydomain.com>

Auto manuals search

<http://auto.somanuals.com>

TV manuals search

<http://tv.somanuals.com>