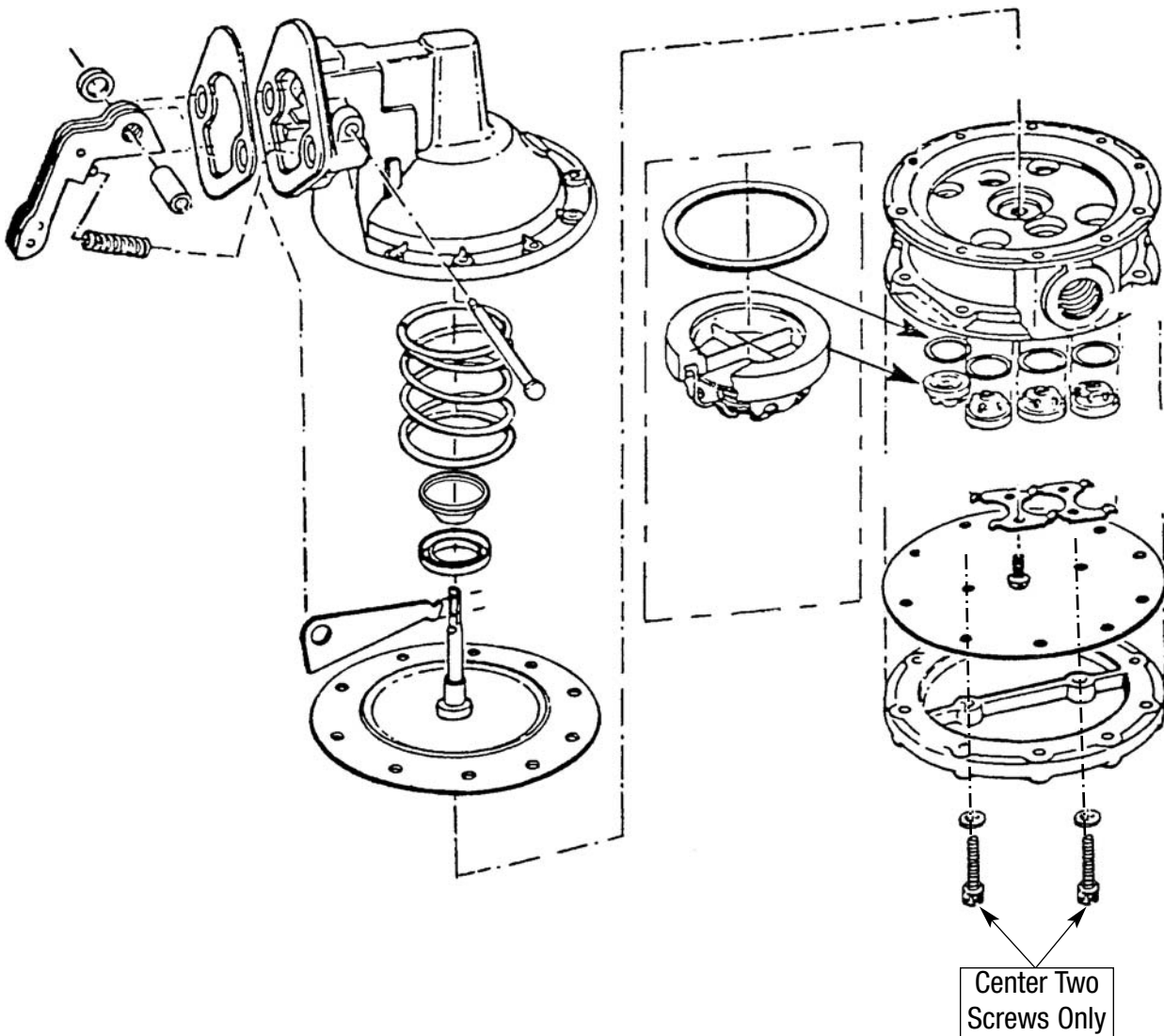




## Important Note Regarding Installation of Bottom Feed Fuel Pump Plates #1797 and #1798

When installing Edelbrock bottom feed fuel pump plates, it may be necessary to shorten the two center fuel pump screws slightly to prevent them from bottoming out as seen below.



## Free Manuals Download Website

<http://myh66.com>

<http://usermanuals.us>

<http://www.somanuals.com>

<http://www.4manuals.cc>

<http://www.manual-lib.com>

<http://www.404manual.com>

<http://www.luxmanual.com>

<http://aubethermostatmanual.com>

Golf course search by state

<http://golfingnear.com>

Email search by domain

<http://emailbydomain.com>

Auto manuals search

<http://auto.somanuals.com>

TV manuals search

<http://tv.somanuals.com>