

# Gigabit Ethernet PCI Adapter

**EN-9235TX-32**

**User Manual**

Version 1.0 / 1, 2009



## **FCC Statement**

This equipment has been tested and found to comply with the limits for a Class B digital device, pursuant to part 15 of the FCC Rules. These limits are designed to provide reasonable protection against harmful interference when the equipment is operated in a commercial environment. This equipment generates, uses, and can radiate radio frequency energy and, if not installed and used in accordance with the instruction manual, may cause harmful interference to radio communications.

Operation of this equipment in a residential area is likely to cause harmful interference in which case the user will be required to correct the interference at his own expense.

This device complies with Part 15 of the FCC Rules. Operation is subject to the following two conditions: (1) this device may not cause harmful interference, and (2) this device must accept any interference received; including interference that may cause undesired operation.

## **CE Mark Warning**



This equipment complies with the requirements relating to electromagnetic compatibility, EN 55022 class B for ITE, the essential protection requirement of Council Directive 89/336/EEC on the approximation of the laws of the Member States relating to electromagnetic compatibility.

Edimax has an on-going policy of upgrading its products and it may be possible that information in this document is not up-to-date. Please check for the latest information at [www.edimax.com](http://www.edimax.com). No part of this document can be copied or reproduced in any form without written consent from the company.

Trademarks:

All trade names and trademarks are the properties of their respective companies.

Copyright © 2009. All Rights Reserved.

# 1. Introduction

Thanks for purchasing the Edimax EN-9235TX-32 Gigabit Ethernet PCI adapter. This manual describes the steps to follow when installing the hardware and software that came with the product. The EN-9235TX-32 adapter supports 10BASE-T, 100BASE-TX and 1000BASE-T Ethernet copper interface. Moreover, the PCI interface on the EN-9235TX-32 complies with PCI Local Bus, and is compatible with 32-bit PCI bus. As a bus master, the EN-9235TX-32 requests access to the PCI bus, instead of waiting to be polled.

## 1.1 Features

The EN-9235TX-32 Gigabit Ethernet PCI adapter is a cost effective, high-performance network interface card. It operates in 10BASE-T, 100BASE-TX and 1000BASE-T modes and integrates easily with Fast Ethernet hub and Gigabit hub and switches.

- Complies with IEEE 802.3 10BASE-T, IEEE 802.3u 100BASE-TX, and IEEE 802.3ab 1000BASE-T standards
- Complies with PCI specifications
- Supports 32-bit bus master for high throughput and low CPU utilization
- Supports both Half and Full Duplex operations
- Supports 10/100/1000Mbps auto-sensing capability
- Supports Wake On LAN (depending on the model and the user's motherboard function)
- Rich diagnostic LED mounted on bracket for easy viewing and troubleshooting (Link/Act Green/Blinking Green)
- Plug-and-Play Installation
- Network drivers on CD for Windows 98SE, 2000, XP, Vista, MAC 10.4x up and Linux driver
- FCC, CE class B certified

## 1.2 System Requirements

Before using the adapter, you need the following components:

- One 32 or 64 bit PCI master mode expansion slot that is compliant with PCI bus specifications
- One CD-ROM drive
- The following cables:

Port Type	Media	Max. Distance
10BASE-T	Cat. 3, 4, or 5 UTP	100 meter
100BASE-TX	Cat. 5 or 5e UTP	100 meter
1000BASE-T	Cat. 5 or 5e UTP	100 meter

**NOTE:** 1000BASE-T signaling requires four twisted pairs of Category 5 balanced cabling, as specified in ISO/IEC 11801:1995 and ANSI/EIA/TIA-568-A (1995) and tested for additional performance using testing procedures defined in TIA/EIA TSB95.

## 2. Unpacking and Inspection

**Caution:**

Under ordinary circumstances, this adapter card will not be affected by static charge as may be received through your body during handling of the unit. In special circumstances where you may carry an extraordinarily high static charge, it is highly recommended for you to reduce the charge by touching a ground before handling the adapter card.

Open the shipping gift box and carefully remove all items. Please check the following items:

- One EN-9235TX-32 Gigabit Ethernet PCI Adapter
- One driver/manual CD

**Note:**

If any of the listed items are missing, please contact your distributor or reseller.

## 3. Installing the Adapter

1. Turn off the computer.
2. Remove the computer's cover in accordance to its manual.
3. Insert the contact edge of the adapter card into the connector of any available PCI Bus master expansion slot. Press the card firmly into the connector to PCI slot. Please make sure that the card's contacts are fully seated in the PCI slot.
4. Install the bracket screw that secures the card to the computer chassis.
5. Replace the computer's cover.
6. Connect the CAT3 or CAT5 UTP cable to the RJ-45 network connector.
7. Remove driver CD from the PC's CD-ROM drive.
8. Turn on the computer.
9. If the BIOS section of your computer's boot program is Plug-and-Play compliant, then at power up the BIOS will automatically configure any newly installed adapter.

**Note:**

Due to some Plug-n-Play BIOS programs' problem, a newly installed adapter, may occasionally be assigned an interrupt number that is already used by another device adapter. In such case, the conflict of interrupt number will cause faults in the behavior of both devices. Therefore it is necessary to run the CMOS Setup utility, and manually assign a non-conflict Interrupt Number.

## 4. Driver CD

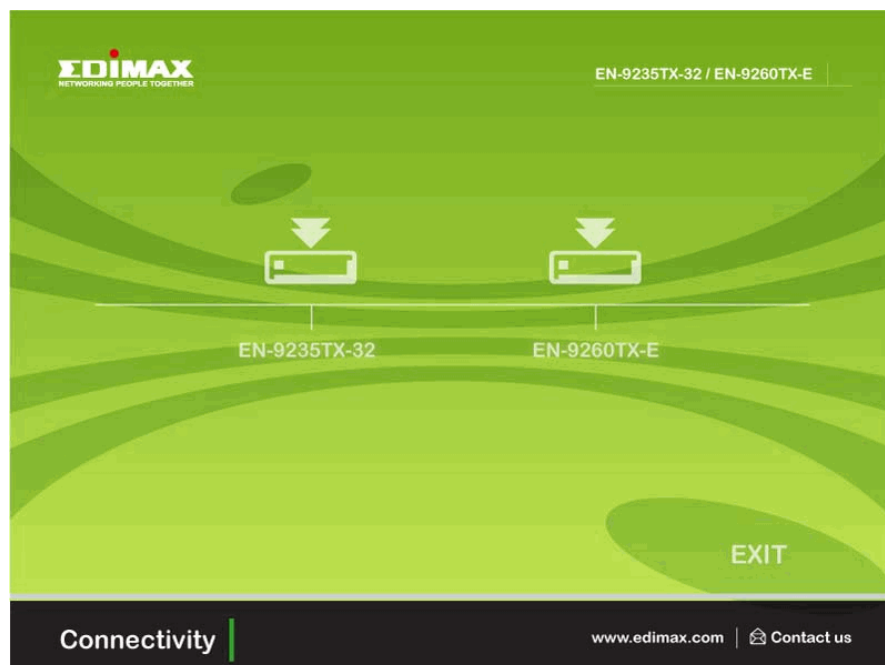
The driver CD contains all the popular operating system drivers such as:

- Windows 98SE/ME/NT4.0/2000/XP/Vista
- MAC OS 10.4x and up
- Linux
- Novell Netware 4.X/5.X/6.X

## 5. Software Installation

After mounting this adapter to your computer, you have to install a driver to activate this adapter. The following instruction uses Windows XP as the presumed operation system. The screens upon installation differ slightly from each operation system but the procedures are familiar. Please refer to the following for instructions.

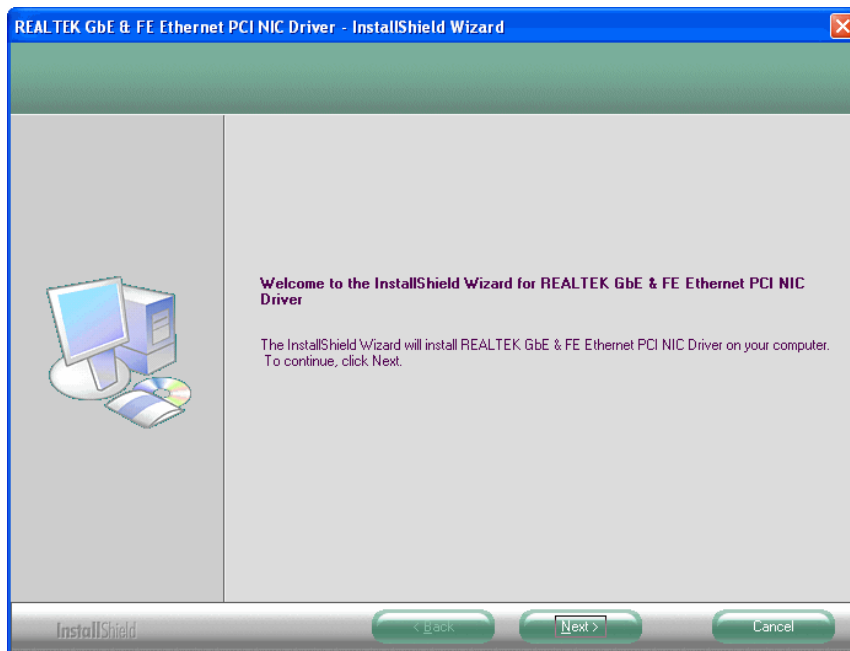
1. Turn your computer on after plugging the EN-9235TX-32 to a PCI-E slot. When the “Found New Hardware Wizard” pops up, click the “Cancel” button to close the window.
2. Insert the Driver CD into your CD ROM drive. The Setup Wizard will run automatically and display the following screen. Select EN-9235TX-32 by clicking on its product icon.



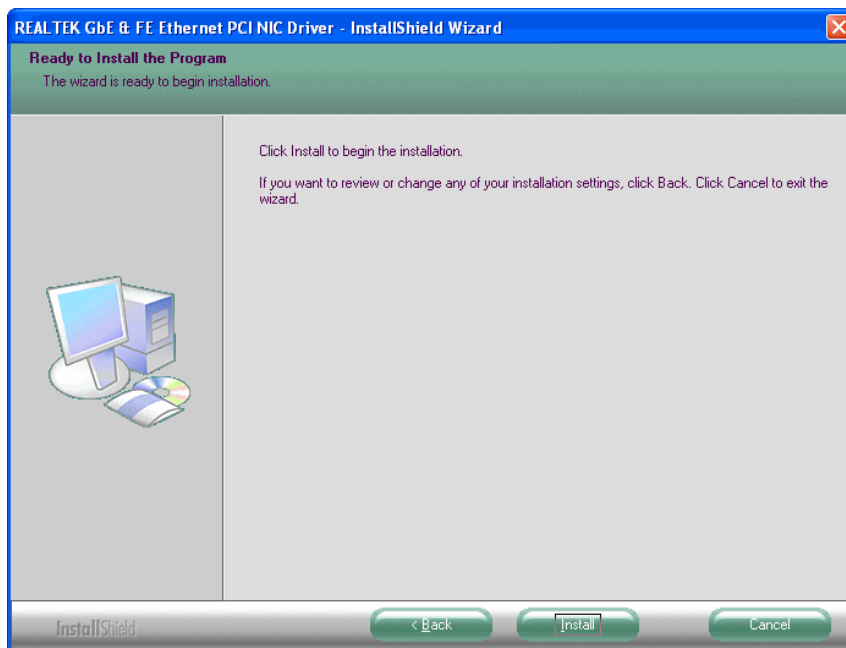
3. On the following screens, choose Setup Driver and select your operating system.



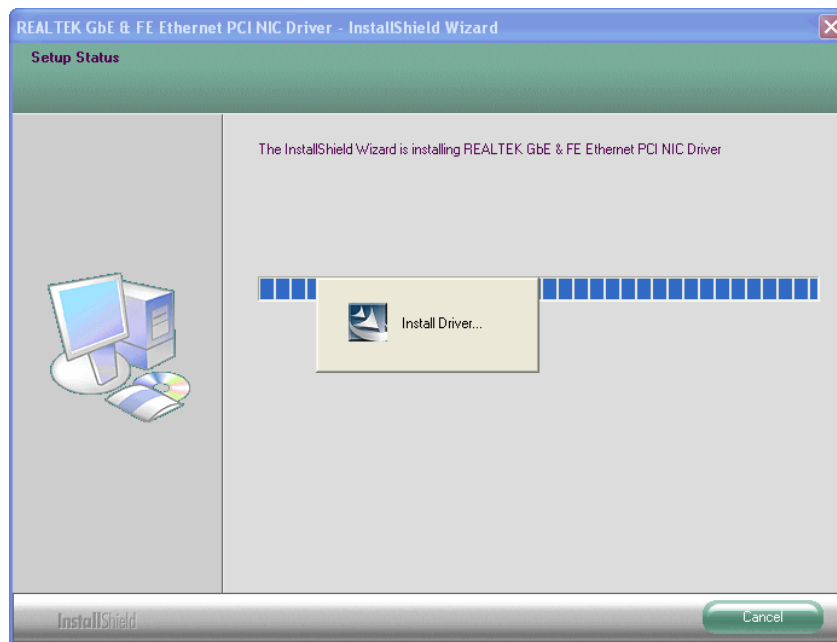
4. When the Welcome window pops up. Click the “Next” button to start driver installation.



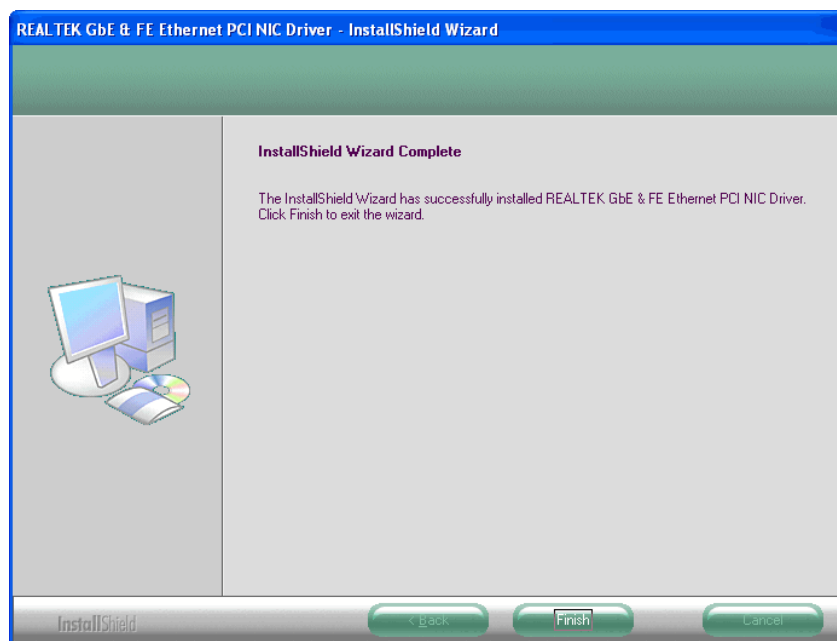
5. On the following screen, click Install.



6. Please wait while driver is being installed.



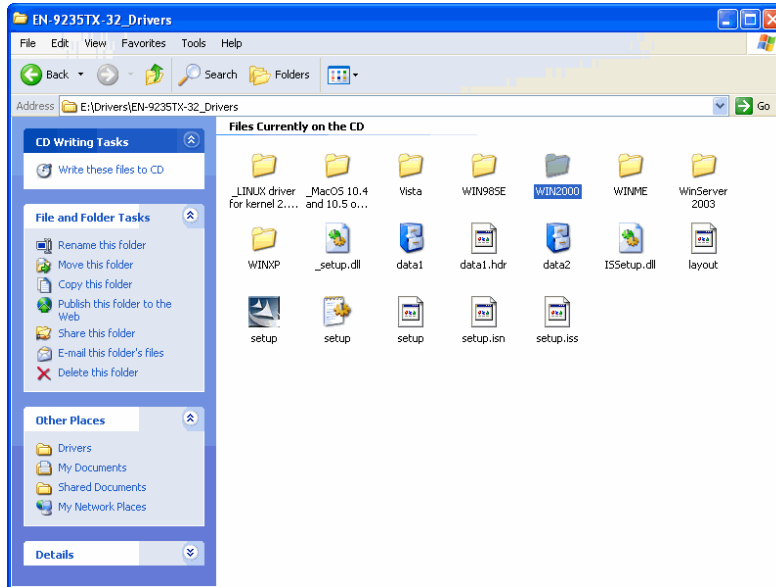
7. Click the "Finish" button to complete driver installation.





**Note:**

Driver installation details for MAC OS and Linux are in their respective folders. Please use your File Manager to locate and browse the CD contents for instructions.





**EDIMAX Technology Co., Ltd.**  
[www.edimax.com](http://www.edimax.com)

## Free Manuals Download Website

<http://myh66.com>

<http://usermanuals.us>

<http://www.somanuals.com>

<http://www.4manuals.cc>

<http://www.manual-lib.com>

<http://www.404manual.com>

<http://www.luxmanual.com>

<http://aubethermostatmanual.com>

Golf course search by state

<http://golfingnear.com>

Email search by domain

<http://emailbydomain.com>

Auto manuals search

<http://auto.somanuals.com>

TV manuals search

<http://tv.somanuals.com>