

EDIMAX

NETWORKING PEOPLE TOGETHER



Skype Gateway Box VO-4500SK V2.0

User's Manual

2005/11/15 (Ver:1.0.2.4b)

Table of Contents

1. Introduction

- 1.1 Features
- 1.2 Package Contents
- 1.3 System Requirements

2. Install Skype Software

- 2.1 Downloading and Installing Skype
- 2.2 Creating a Skype Account
- 2.3 Adding Accounts
- 2.4 Assign a Speed-Dial Number

3. Connecting Hardware/Installing

- 3.1 Skype Gateway Box Connecting
- 3.2 Connecting the Skype Gateway Box Hardware
- 3.3 Installing Skype Gateway Box Driver
- 3.4 Installing Skype Gateway Box Software
- 3.5 Skype Sound and Audio Set-Up

4. Using Skype Gateway Box

- 4.1 Make a speed-dial call
- 4.2 Make a Phone Call with Skype Out
- 4.3 Make a Regular Phone Call

5. Middleware Interface

- 5.1 Voice Mail Messages
- 5.2 Voice Mail Settings
- 5.3 Telephone Settings
- 5.4 Recording Function
- 5.5 Magic Voice

1. Introduction

1.1. Features

- Support USB 1.1/2.0
- Plug and play
- Support PC-PC, PC-Phone, Phone-PC, Phone-Phone
- Make/receive Skype call and regular PSTN call
- Talk through Phone or MIC/SPK
- Hold and Switch between PC and PSTN
- Call forward function
- Voice Mail function
- Echo Cancellation and Noise reduction
- No external Power needed
- FXO (PSTN) inbound password protection
- Windows driver (WinXP, 2000) supported
- Windows management utility (Middleware)

1.2. Package Contents

When you buy a set of Skype Gateway Box, the Package must have the following:

- Skype Gateway Box
- USB cable
- Telephone cable (RJ11)
- Quick Start Guide
- Skype Gateway Box Installation CD-ROM

1.3. Minimum System Requirements:

- . Windows 2000/XP
- . Computer running at 400 MHz or Higher
- . 128 MB RAM
- . 15 MB free disk space on your hard drive
- . LAN or modem-based Internet connection

Recommended:

- . Windows 2000/XP/2003
- . Computer running at 1 GHz or better
- . 256 MB RAM or better
- . 30 MB free disk space on your hard drive
- . Broadband Internet connection

2. Install Skype Software

Before using Skype Gateway Box and Middleware, please download and install Skype on your computer or notebook.

2.1. Downloading and Installing Skype

Step 1 :

Go to WWW.SKYPE.COM Website to get the Skype Installation File.

Step 2 :

. When the Skype web page appears, click Download Skype now, It's free. When the Download page appears, click this item to download.



Step3 :

Download the Skype Installation file to your PC.

Step 4 :

After download, double-click on the "SkypeSetup.Exe" icon to start installing Skype.

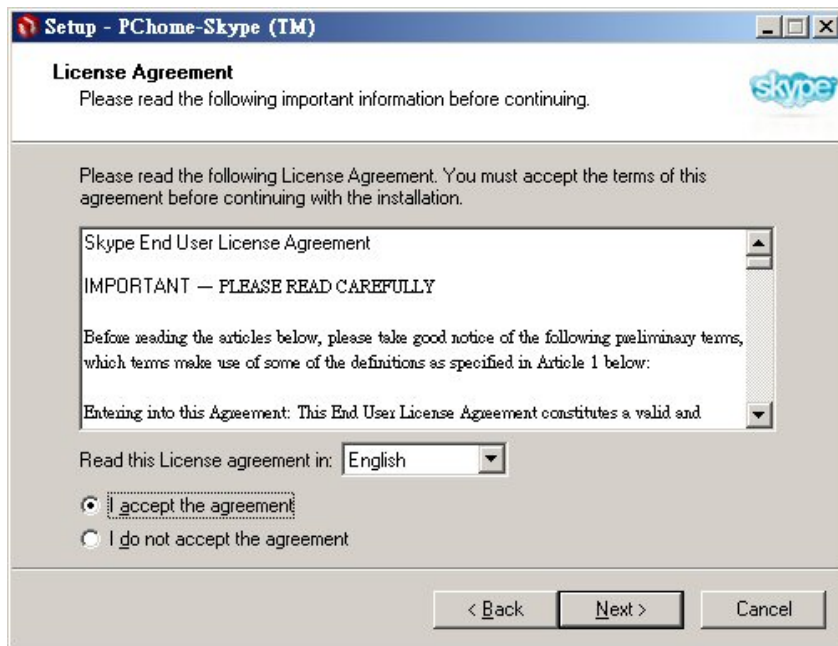
Step 5 :

When the window appears, select a language, then click "Next".



Step 6 :

In the next window, Check the “I accept the agreement” Radio Button, then click “Next”.



Step 7 :

Once Skype is installed. Click “Finish” to complete the installation.

The Skype software is now installed on the computer. Go to the next section to create a Skype account.



2.2 Creating a Skype account

Step 1 :

After Skype is installed, the “Create a new Skype account” window appears. In the “New Users -Create a Skype Account” tab, enter the required information in the suggested available fields (Note the Red Asterisk “*” are required to be filled in). Click “Next” once this has been done.

PChome-Skype (TM) - Create Account

S Create a new Skype Account

What would you like to do?

New Users - Create a Skype Account | Existing Users - Log in to Skype

* Choose Skype Name
Minimum 6 characters. Your Skype Name must start with a letter and cannot include spaces.

* Password

* Repeat Password
Minimum 4 characters

Log this user on automatically when Skype starts

Start Skype when the Computer Starts

* Yes, I have read and I accept the [Skype End User Licence Agreement](#)

Fields indicated with red asterisk (*) are required.

Next > Cancel

Step 2 :

When the “Your Skype Personal Profile” window appears, fill in the appropriate information in their specific fields. Upon completion, click “Update” and your Skype account will have been created. Go to the next section to add contacts to this account.

PChome-Skype (TM) - My Profile

S My Profile

All of the fields below are optional. However, the more information you provide, the easier it will be for your friends to find you on Skype.

Details that all Skype users will see

Full Name Gender

Birthdate
Day Month Year

Country/Region Home phone

State/Province Office phone

City Mobile phone
Enter number with country code, for example: +155 55551234


Language About Me

Home page

Details that only my contacts will see

Private details

E-mail [Add more e-mail addresses.](#)



Your e-mail will be kept private, but those who know it will be able to use it to search for you on Skype.

Update Cancel

2.3 Add a Contact

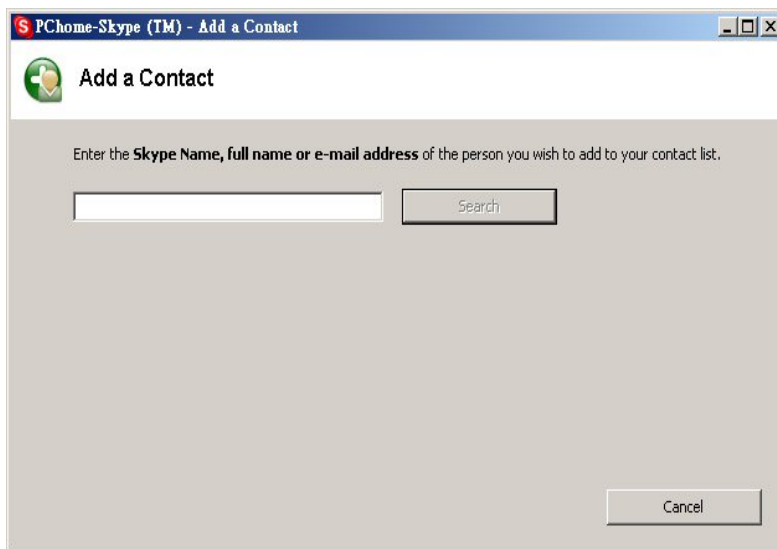
Step 1 :

Go to the main Skype account window.

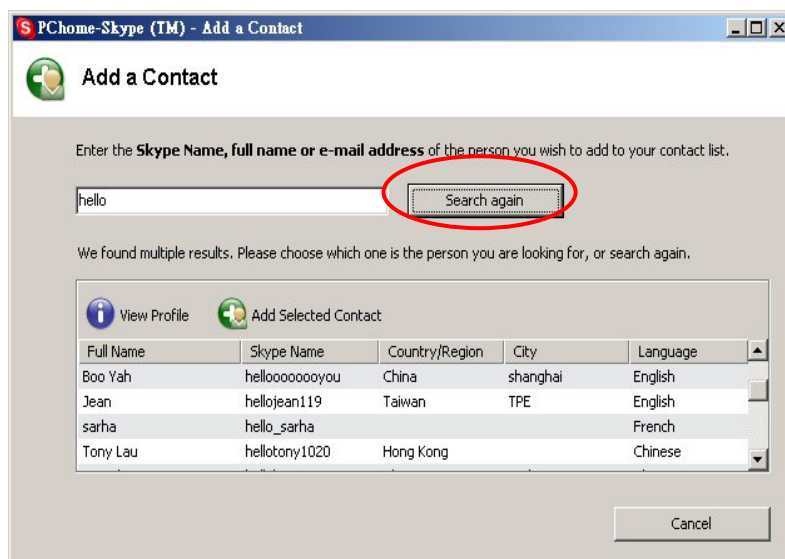
From the menu at the top of the window, select Tools, then Add a Contact....

Step 2 :

When the “Add a Contact” window appears, enter the name of another Skype user in the text box, then click “Search”.



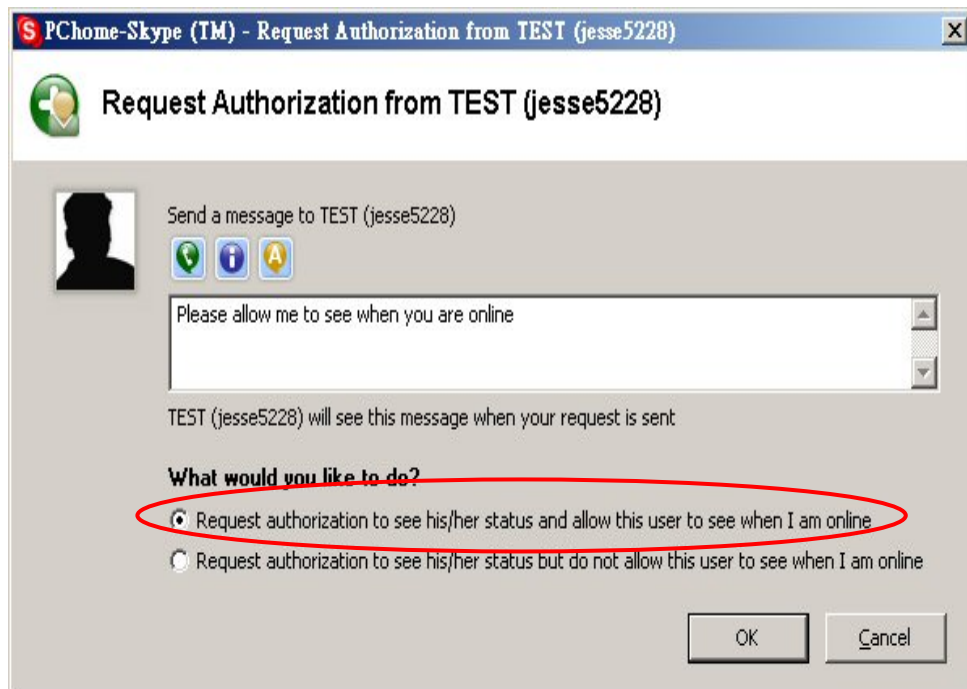
After searching, Skype will display a list of all available contacts with similar information in regards to the “Key Word” searched above.



Select the Skype User you wish to add, and click “Add Selected Contact” to add a new Contact.

Step 3 :

A “Request Authorization” window appears. Select the following statement (Circled in Red below) then click “OK”.



Step 4 :

Click “Finish”. The contact has been added.

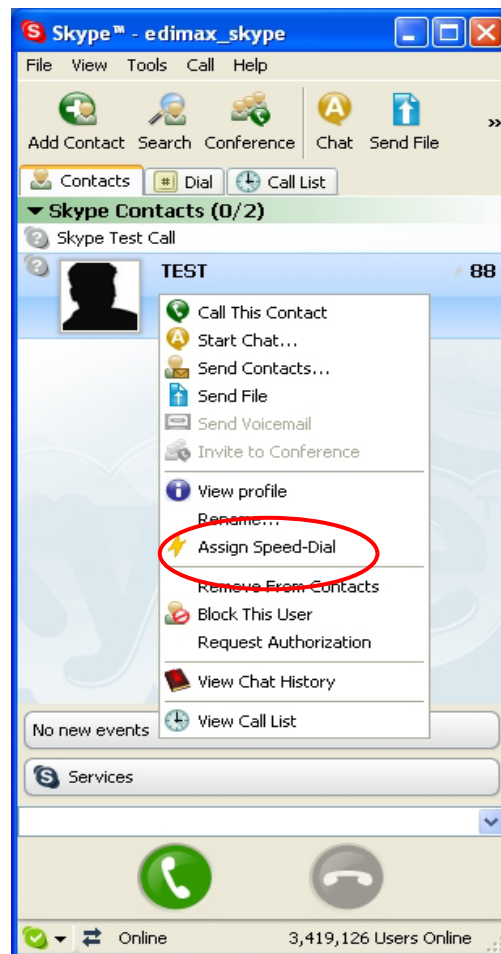
2.4 Assign Speed-Dial Number

Step 1 :

From the main Skype window, select the Contact tab.

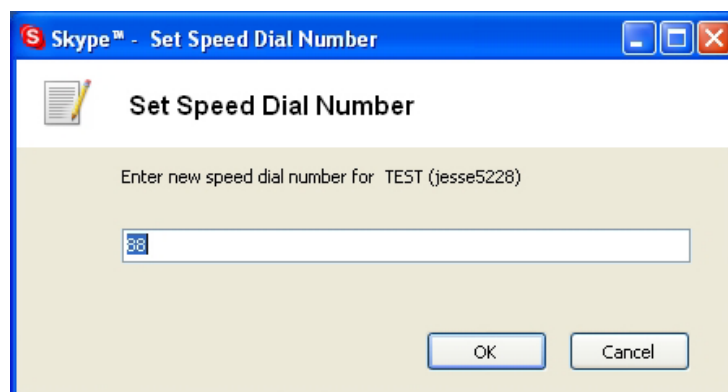
Step 2 :

Right-click on a contact name then Select "Assign Speed-Dial".



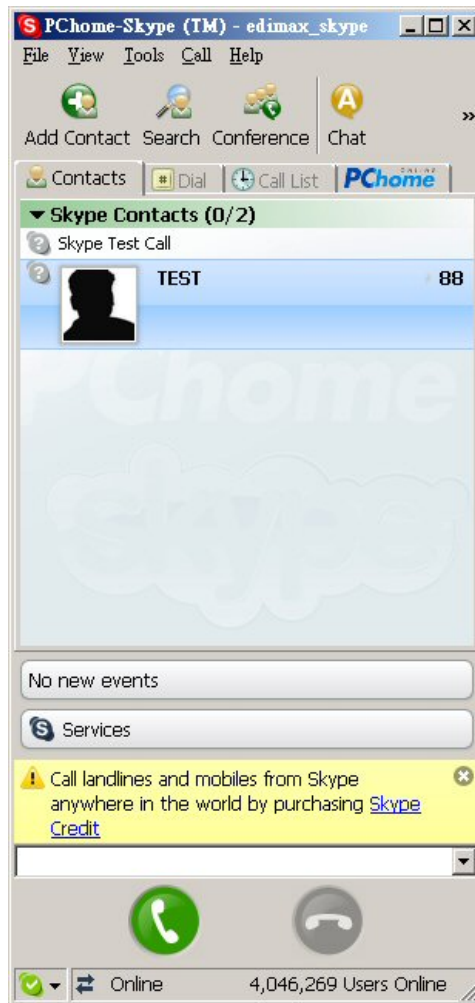
Step 3 :

In the next window, enter a speed-dial number, then click "OK".



Step 4 :

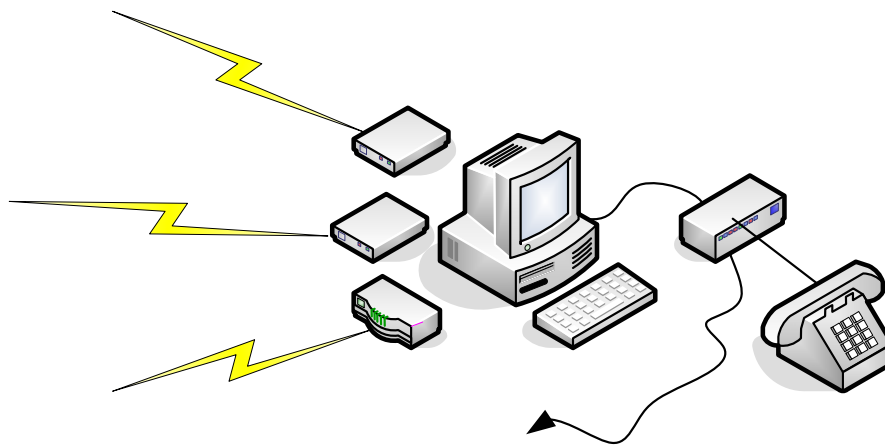
The speed-dial number is now assigned to that specific contact. Repeat to assign speed-dial numbers to other contacts.



3. Connecting Hardware / Installing Skype Gateway Box Software

3.1. Skype Gateway Box Connection Figure

1. ADSL Modem
2. Modem Dial-Up
3. Behind Router/NAT



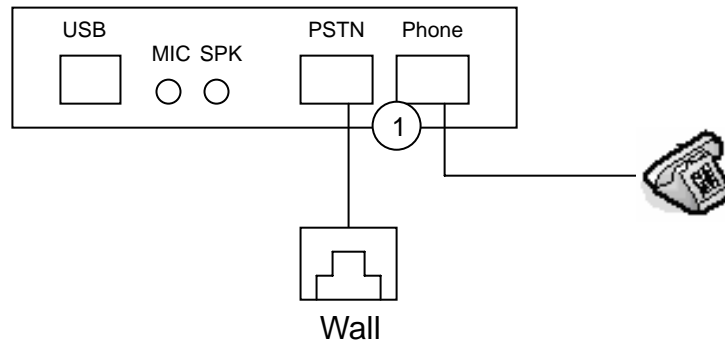
3.2. Connecting the Skype Gateway Box Hardware

Step 1 :

Remove the Skype Gateway Box from product package.

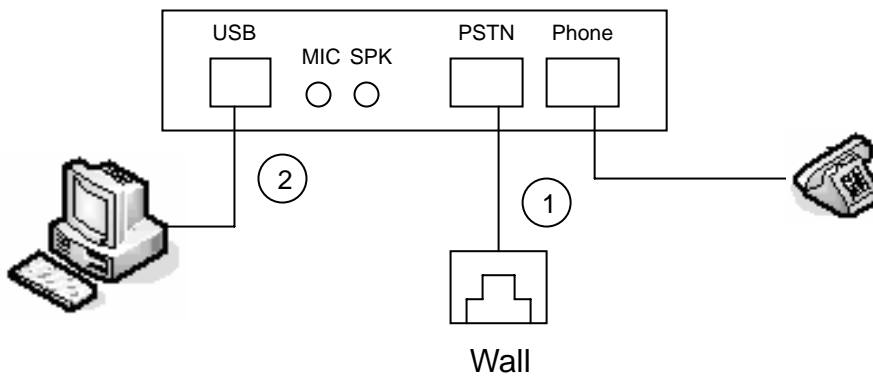
Step 2 :

Remove the telephone cable (RJ11) from the package, and connect one end to your existing telephone and the other end to the “Phone” port at the back of the Skype Gateway Box. As well connect your existing telephone line, from the wall, to the “PSTN” port, also located at the back of the Skype Gateway Box.

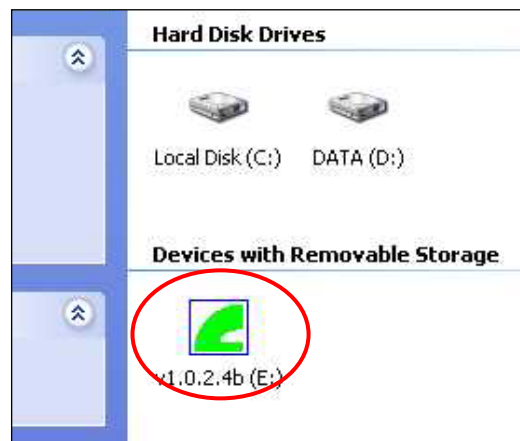


Step 3 :

Remove the USB cable from the package and insert the small square side to the “USB” port at the back of Skype Gateway Box.

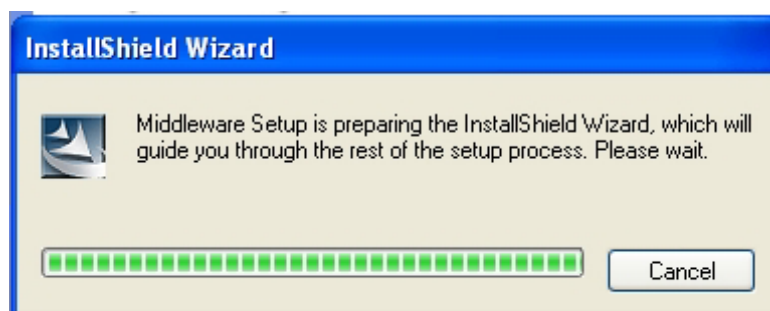


3.3. Installing Skype Gateway Box Middleware



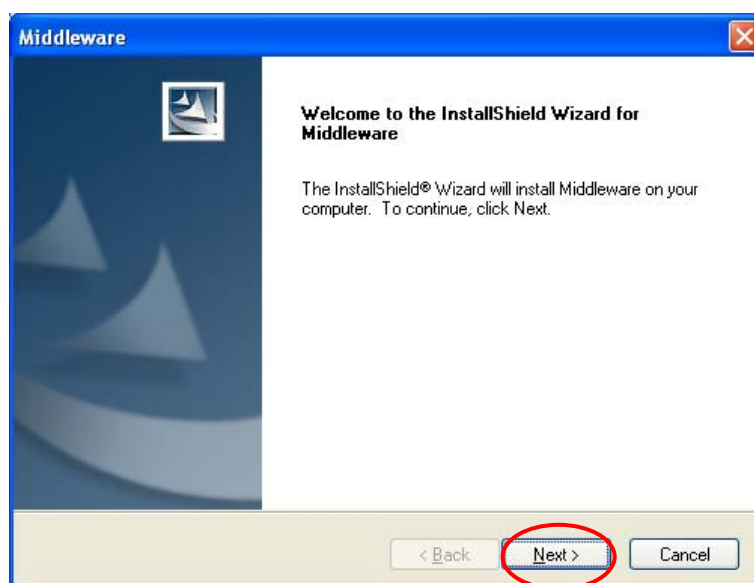
Step 1 :

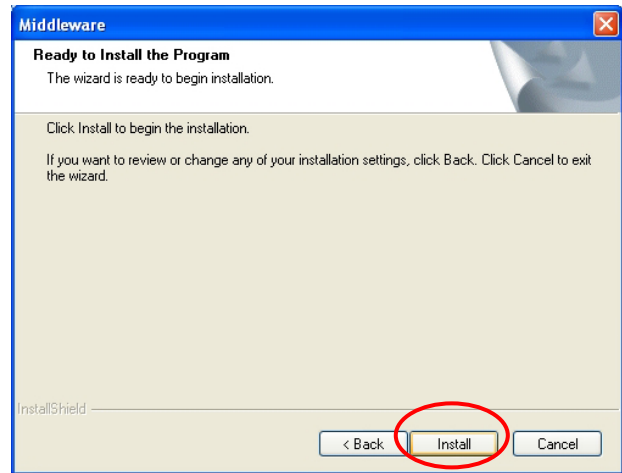
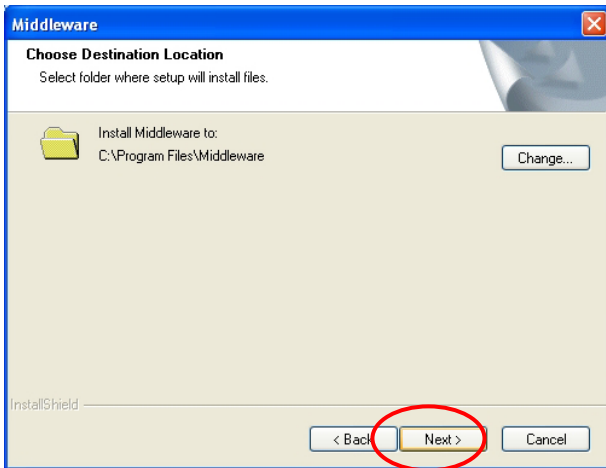
Insert the Installation CD into the CD-ROM drive of the computer, upon which the autorun window will appear. (InstallShield will select the appropriate language automatically)



Step 2 :

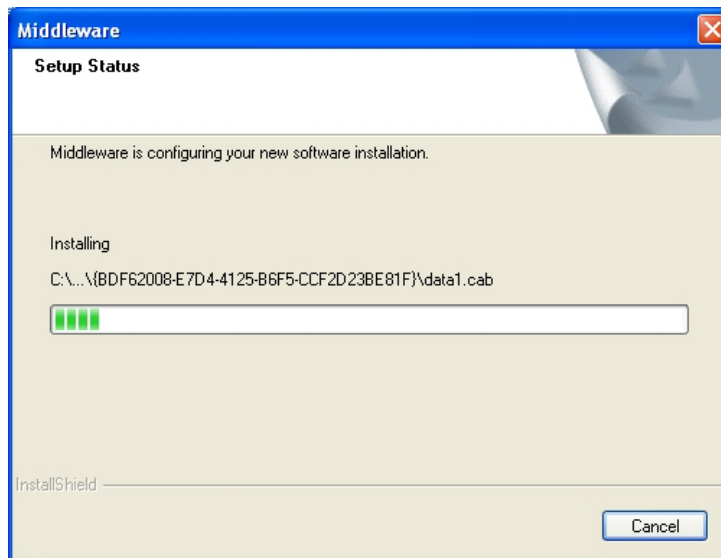
Click "Next" through each of the following steps, then click "Install" to start the process.





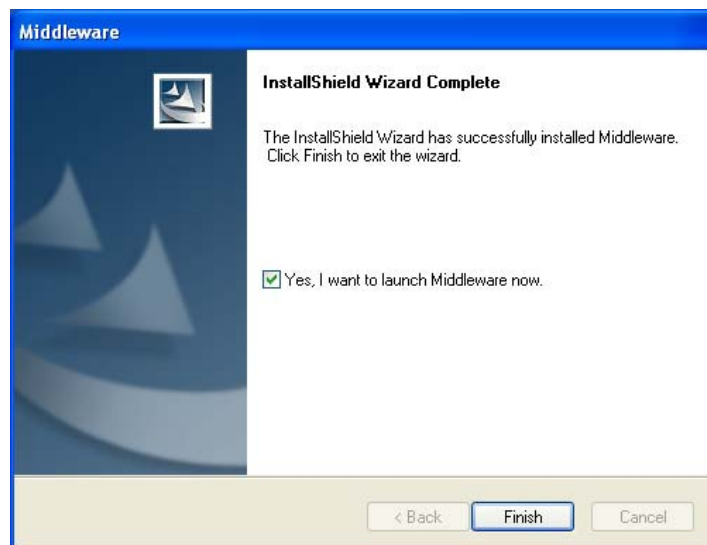
Step 3 :

Start Installing ...



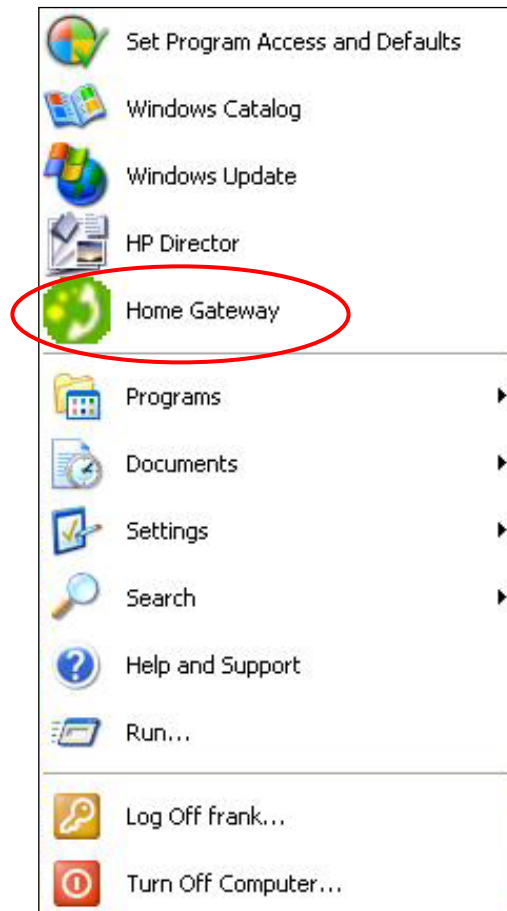
Step 4 :

Once installation is complete, click "Finish".



Step 5 :

A “Middleware” Icon is also created in the process.



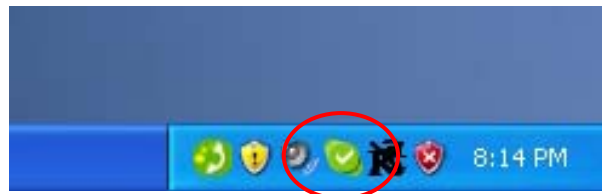
3.4. Start Using Skype Gateway Box

Step 1 :

Starting Skype on your PC.

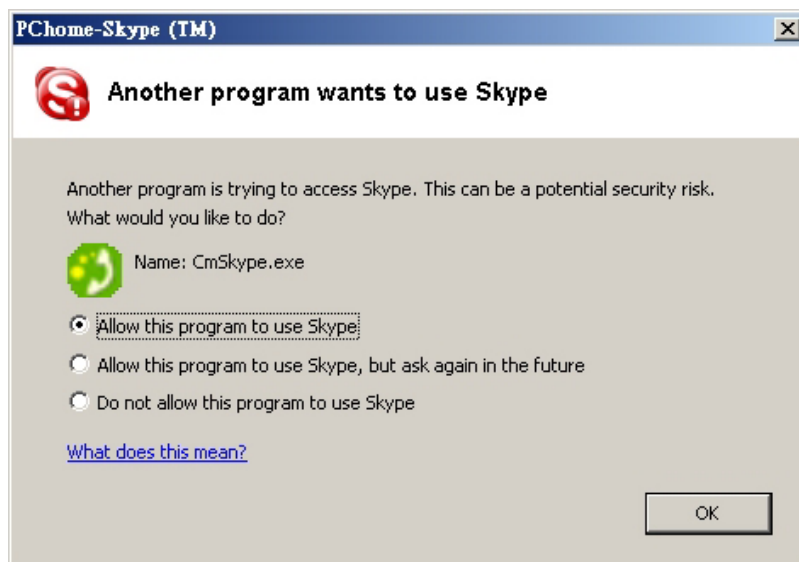


Double-Click the “Skype” Icon and make sure your Skype is running with the Skype icon appearing on the bottom-right hand of your screen.



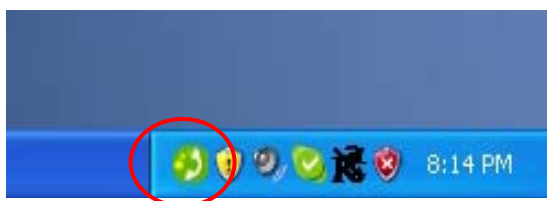
Step 2 :

Click the “Middleware” Icon. A Window will immediately appear, indicating that Skype has detected another program (Middleware) that is try to access it please select “Allow this program to use Skype” to integrate “Middleware” with Skype.

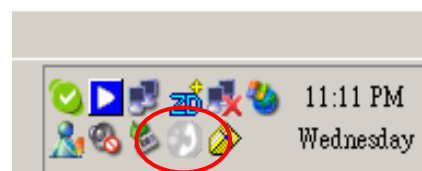


Step 3 :

Right Click Middleware Icon, Click “Advance Setting”.



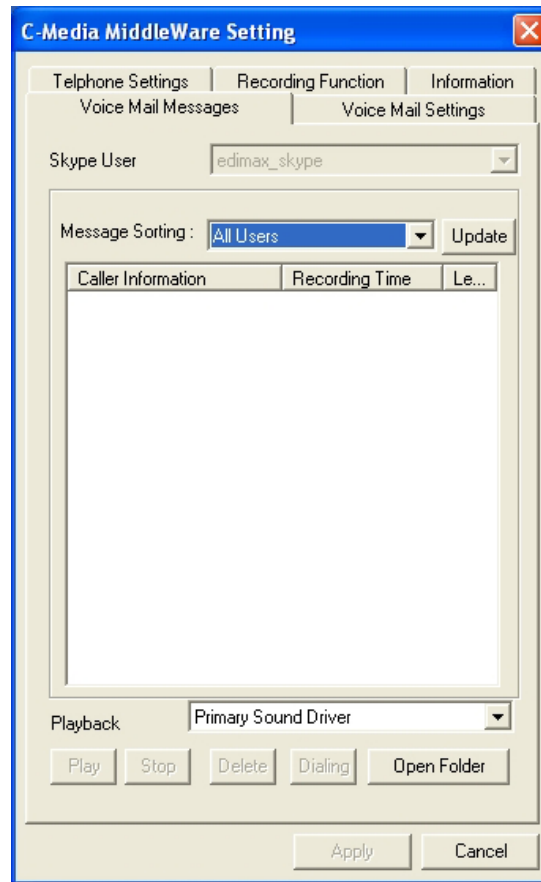
When the Skype Gateway Box is ready, the Middleware Icon will appear in color as above.



When the Skype Gateway Box is not ready or when Skype is not running, the Middleware Icon will appear Gray.

Step 4 :

The Middleware application as shown on your Screen.



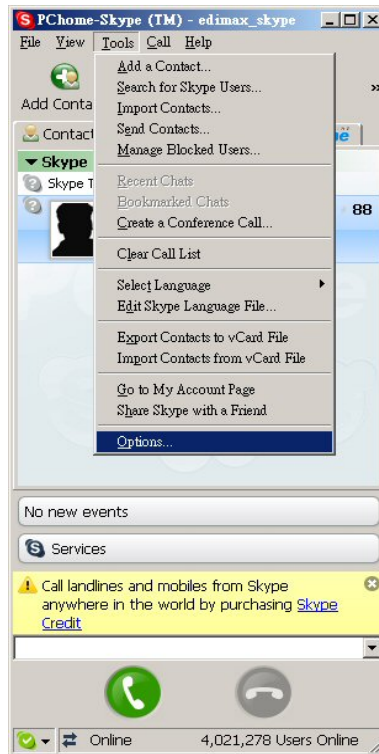
Step 5 :

You may use the functions and settings on the Middleware application.

3.5. Skype Audio Setup

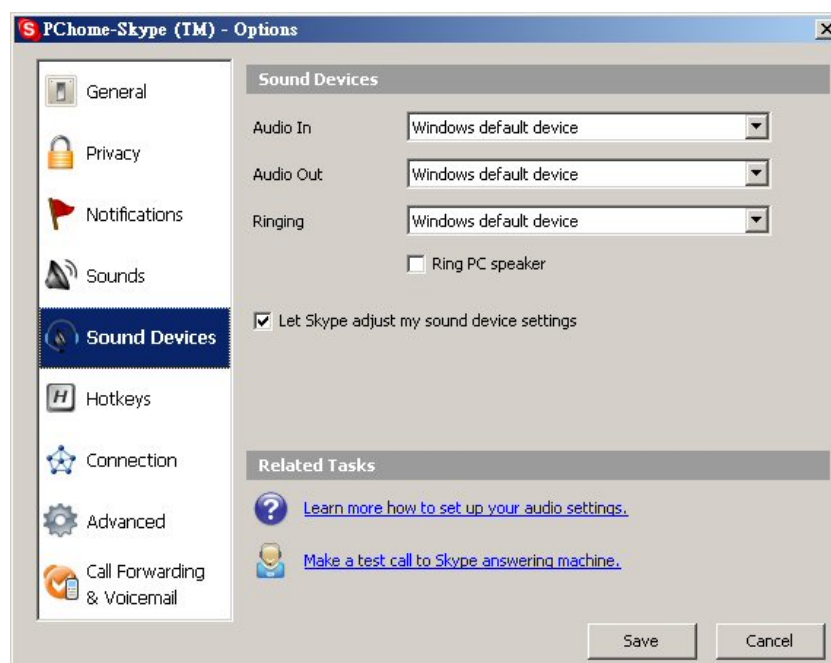
Step 1 :

Start Skype, and Select the Tools menu. Click on “Options” .



Step 2 :

- Find the Sound Devices tab, and click on it.
- In the Audio In/Out drop down menu select the USB device
- Click the Save button

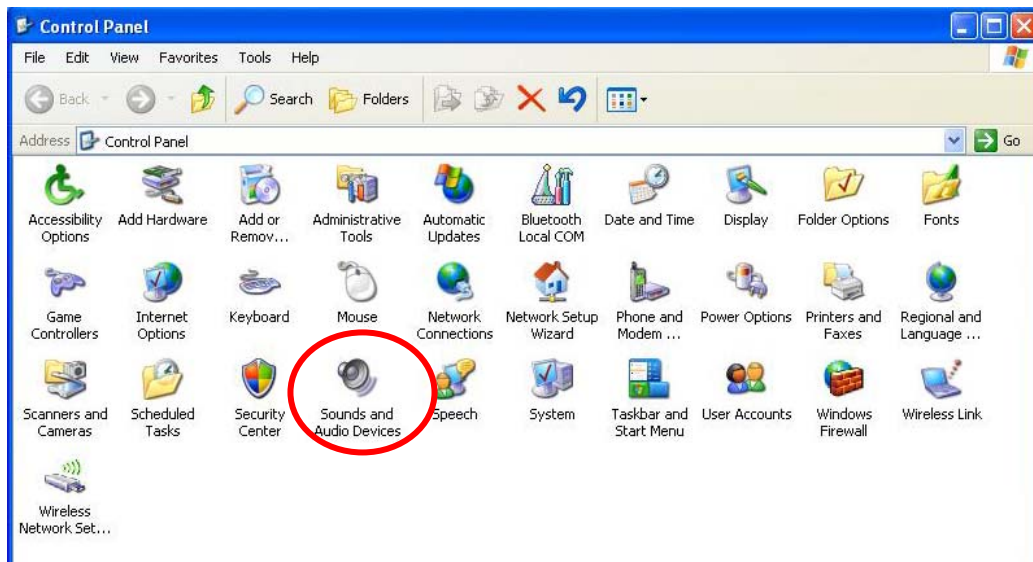


Step 3 :

Click on the Start button and continue to the Settings section within the Start menu.

Click on the Control Panel tab within the Settings submenu.

In the Control Panel window find the “Sounds and Audio Devices” icon, and click on it.



Step 4 :

Find the Audio tab (within the selections on top line), and click on it to display the Audio Settings section.

Within the Sound Playback drop down menu, select the default Windows device. Click “OK”.



4. Using Skype Gateway Box

4.1 Make a Speed-Dial Call

1. Pick up the handset. (Hear the Dial Tone Generated from PSTN)
2. Press the * button to switch to Skype mode. (Hear the Dial Tone Generated from Middleware)
3. Dial your contact's assigned speed-dial number.
4. Press the * button again to start the call.

4.2 Make a Phone Call with Skype Out

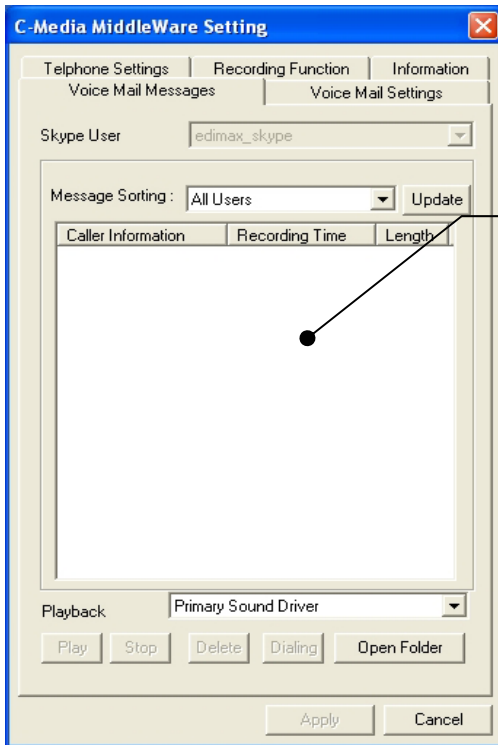
1. Pick up the handset. (Hear the Dial Tone Generated from PSTN)
2. Press the * button to switch to Skype mode. (Hear the Dial Tone Generated from Middleware)
3. Dial the number (Format: 00 + Country Code + City Code + Local Phone or Cell Phone Number)
4. Press the * button again to start the call.

4.3 Make a Regular Phone Call

1. Pick up the handset. (Hear the Dial Tone Generated from PSTN)
2. Dial the Phone Number.

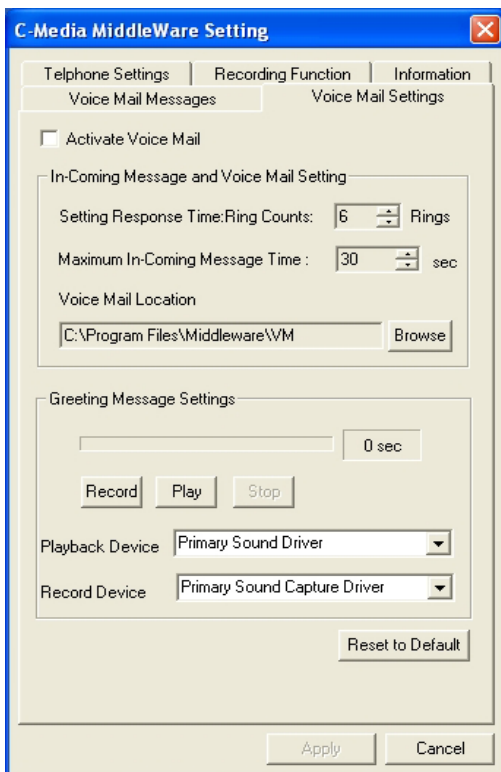
5. Middleware Interface

5.1 Voice Mail Messages



Select and press "Play" Button to listen to Voice Message.

5.2 Voice Mail Settings



How to Use Voice Mail Function:

Step1.

Check "Activate Voice Mail".

Step2.

Set the "Setting Response Time" parameter (Default: 6 Rings)

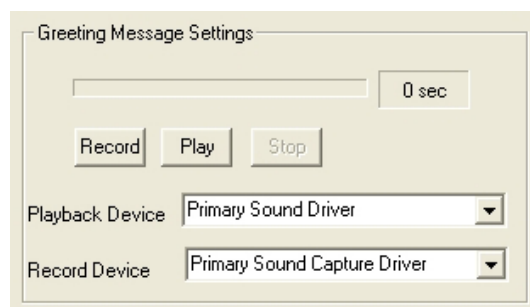
(This means Middleware will start the voice mail function and pick up phone after 6 Rings.)

Step3.

Set "Maximum Incoming Message time" parameter (Default: 30 sec)

(This means the max. voice message recording time will be 30 seconds)

How to Record Voice Mail Greeting:



Step1.

Select the desired "Playback Device" and "Record Device".

Step2.

Press "Record" to start recording the desired Greeting.

Step3.

Press "Stop" to end the recording.

Step4.

Press "Play" to listen to the recorded Greeting.

5.3 Telephone Settings

The screenshot shows the 'C-Media MiddleWare Setting' dialog box with the 'Telephone Settings' tab selected. The dialog has a blue title bar and a close button. It contains several sections of settings:

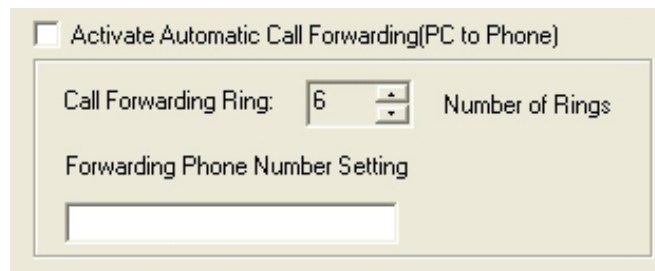
- Voice Mail Messages** and **Voice Mail Settings** tabs are visible at the top.
- Telephone Settings** tab is active, with sub-tabs for **Recording Function** and **Information**.
- Default standby at PSTN mode**: A checked checkbox with a radio button next to it.
- VOIP/PSTN Switch Button**: A dropdown menu currently showing an asterisk (*).
- Activate Automatic Call Forwarding(PC to Phone)**: An unchecked checkbox.
- Call Forwarding Ring**: A spinner box set to 6, labeled 'Number of Rings'.
- Forwarding Phone Number Setting**: An empty text input field.
- Activate Automatic Call Forwarding (PhoneTo PC)**: An unchecked checkbox.
- Call Forwarding Ring**: A spinner box set to 6, labeled 'Number of Rings'.
- Call Forwarding Transfer Password**: A text input field containing 'xxxxxx'.
- (Please provide 4 numbers,do not key in other words or signal)**: A note below the password field.
- Allow SkypeOut when contact is not on line**: A checked checkbox.
- Contacts Setting**: A button at the bottom left.
- Apply** and **Cancel** buttons are at the bottom right.

When picking up the Phone

If checked: Hear Dial Tone from PSTN
If uncheck: Hear Dial Tone from Middleware

You can set the desired button (* or #) used to switch between PSTN and Skype.

How to Use Call Forward Function:



Step1.

Check "Activate Automatic Call Forwarding (PC to Phone)".

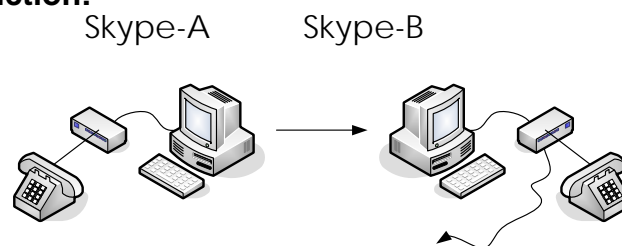
Step2.

Set the "Call Forwarding Ring" (Default: 6 Rings)
(This means Middleware will begin forwarding after 6 Rings)

Step3.

Fill in the "Forwarding Phone number setting" field.
(Middleware will forward this number to PSTN)

How to verify this function:



Step1.

After setting up the call forwarding function, Use Skype-A to call Skype-B.

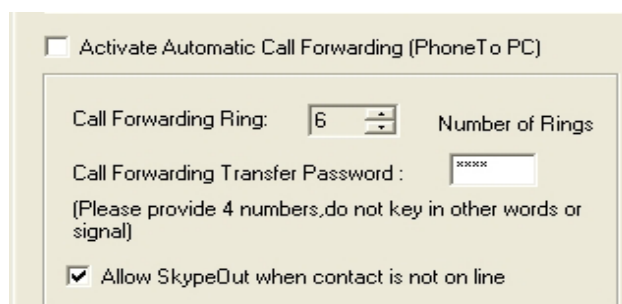
Step2.

Allow Skype-B to ring 6 times. After 6 rings Skype-B's Middleware will begin forwarding the call to the designated phone number through PSTN.

Step3.

Through PSTN the call will be forwarded either to a regular lan line or a mobile phone. If the regular lan line phone or Mobile Phone starts ringing, the test is successful.

How to use Skype through accepting an incoming PSTN call:



Step1.

Check “Activate Automatic Call Forwarding (Phone to PC)”

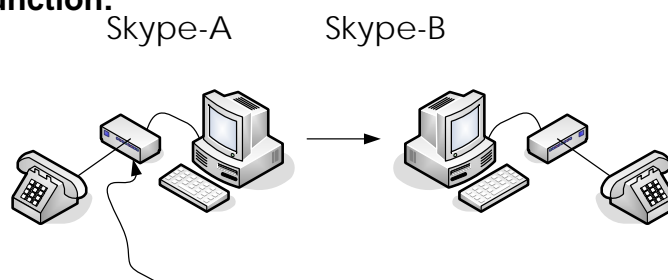
Step2.

Set the “Call Forwarding Ring” (Default: 6 Rings)

Step3.

Set the “Call Forwarding Transfer Password” (Default: 0000)

How to verify this function:



Step1.

After all the parameters have been set. Try making a call to your PSTN Line.

Step2.

If there is no answer on Skype-A after 6 rings, Middleware will pick up this call and play a greetings message.

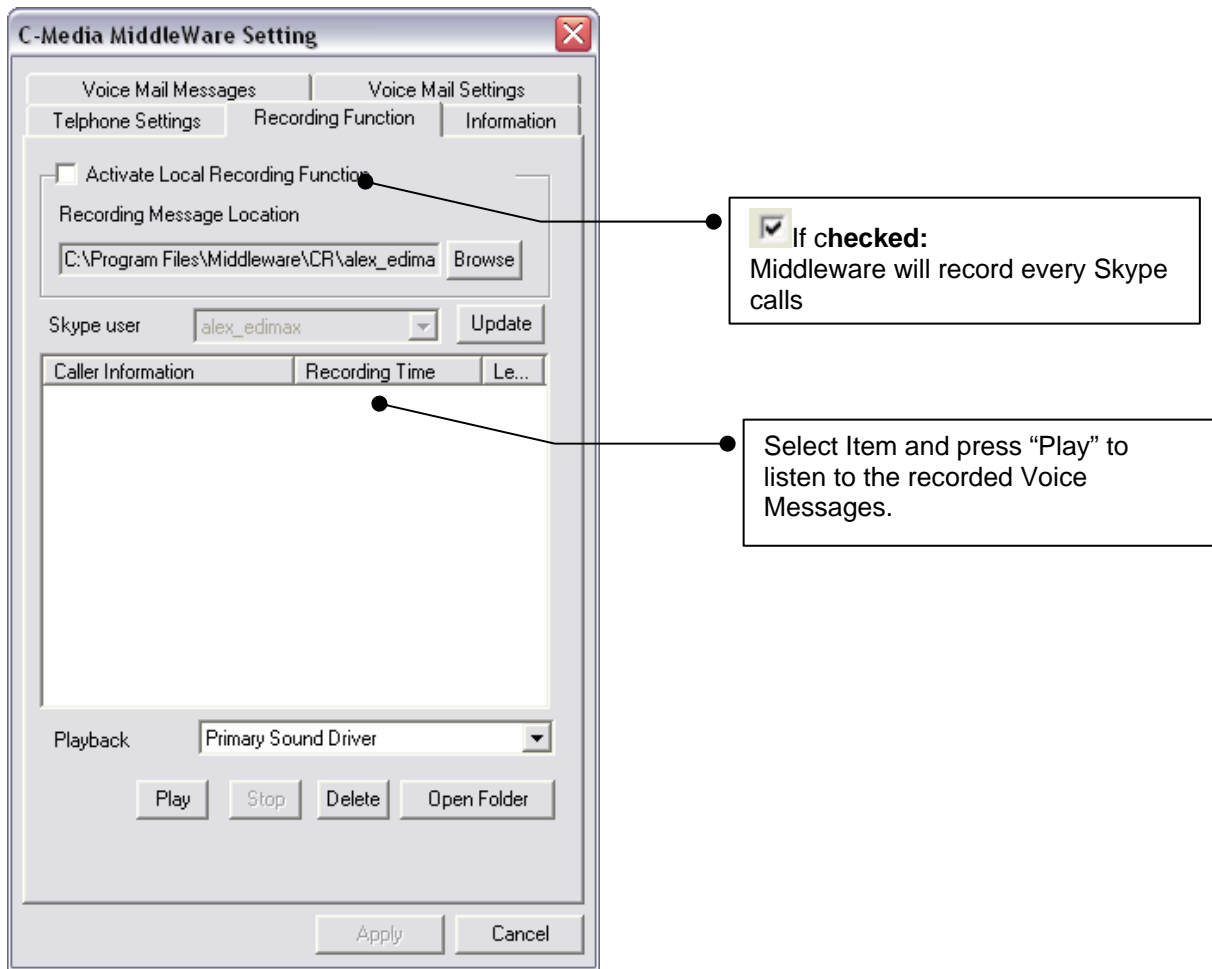
Step3.

Enter the 4 digits “Call Forwarding Transfer Password” on your phone. If password is correct, Middleware will play another greetings message confirming the access.

Step4.

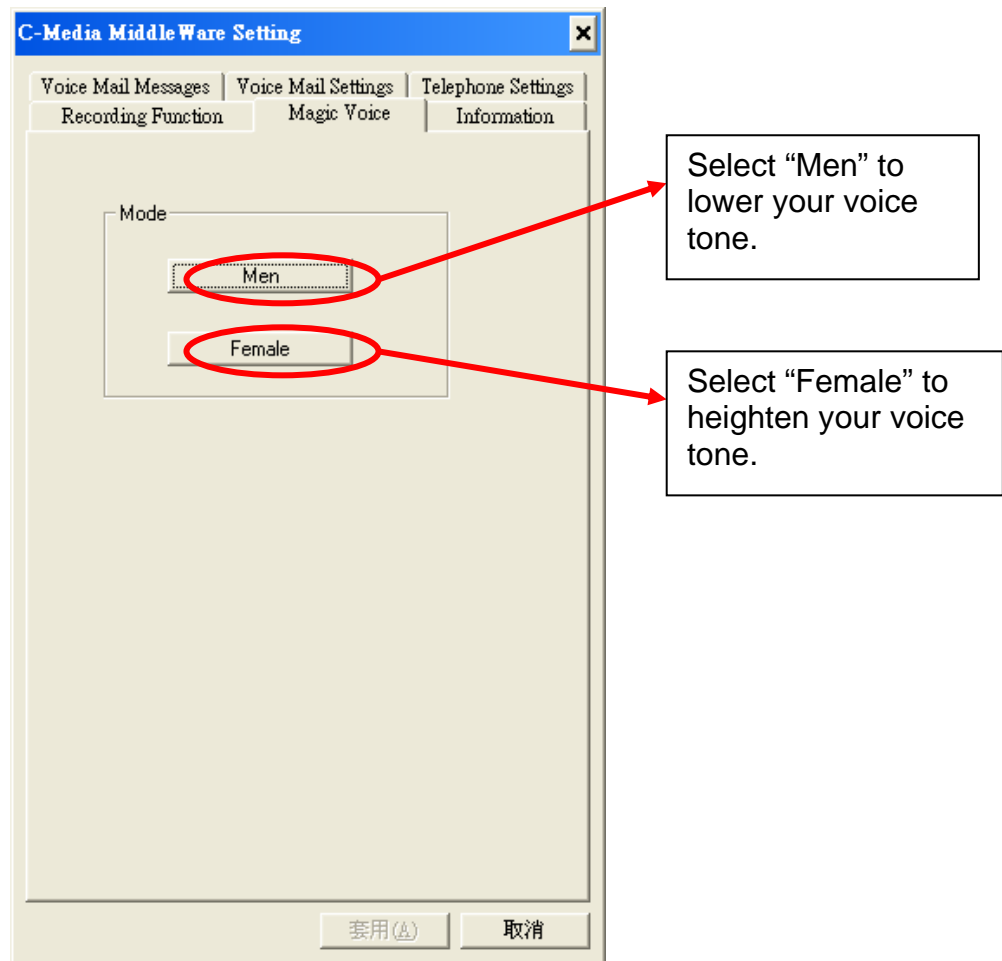
You may begin trying to make Speed-Dial Call or Skype-out call.

5.4 Recording Function



5.4 Magic Voice

User can use this magical function to change to either a male or female voice.



Free Manuals Download Website

<http://myh66.com>

<http://usermanuals.us>

<http://www.somanuals.com>

<http://www.4manuals.cc>

<http://www.manual-lib.com>

<http://www.404manual.com>

<http://www.luxmanual.com>

<http://aubethermostatmanual.com>

Golf course search by state

<http://golfingnear.com>

Email search by domain

<http://emailbydomain.com>

Auto manuals search

<http://auto.somanuals.com>

TV manuals search

<http://tv.somanuals.com>