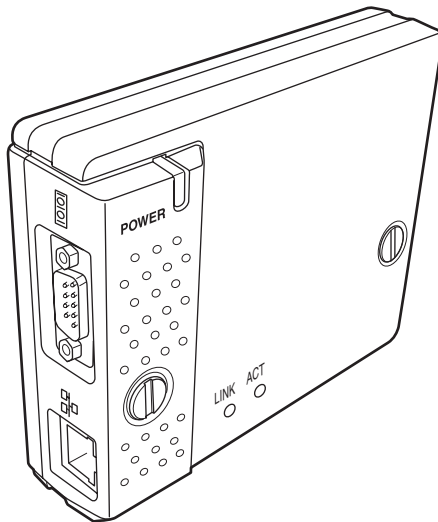


## PjNET-30 OWNER'S MANUAL



The owner's manuals of Pj-to NetDirector are included on the supplied document CD-ROM as the PDF file format. To read the owner's manual, set the document CD-ROM onto your computer and follow the guide on the screen. To read the owner's manual, you need the Adobe Reader (Adobe Acrobat Reader) version 6.0 or later software in your computer. The Adobe Reader can be obtained from the Adobe website (<http://www.adobe.com>).

## Pj-to NetDirector Quick Setup Guide

## Compliance

### Federal Communication Commission Notice

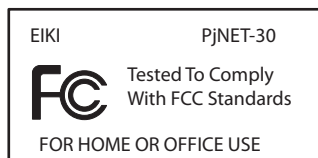
This equipment has been tested and found to comply with the limits for a Class B digital device, pursuant to part 15 of the FCC Rules. These limits are designed to provide reasonable protection against harmful interference in a residential installation. This equipment generates, uses and can radiate radio frequency energy and, if not installed and used in accordance with the instructions, may cause harmful interference to radio communications. However, there is no guarantee that interference will not occur in a particular installation. If this equipment causes harmful interference to radio or television reception which can be determined by turning the equipment off and on, the user is encouraged to try to correct the interference by one or more of the following measures:

- Reorient or relocate the receiving antenna.
- Increase the separation between the equipment and receiver.
- Connect the equipment into an outlet on a circuit different from that to which the receiver is connected.
- Consult the dealer or an experienced radio/TV technician for help.

Use of shielded cable is required to comply with class B limits in Subpart B of Part 15 of FCC Rules.

Do not make any changes or modifications to the equipment unless otherwise specified in the instructions. If such changes or modifications should be made, you could be required to stop operation of the equipment.

Model Numbers	: PjNET-30
Trade Name	: EIKI
Responsible party	: EIKI International, Inc.
Address	: 30251 Esperanza Rancho Santa Margarita CA 92688-2132
Telephone No.	: 800-242-3454 (949-457-0200)





### CAUTION ON USE IN NETWORK

- When you receive an alert e-mail from the projector, you must check the projector immediately. Fire or accident may result if the projector is used in an abnormal condition.
- When you install the projector at remote location and use it through the network, you must perform the safety inspections periodically. In this case you must pay attention to the change of environment in which you installed the projector. It may cause fire or an accident depending on the change of environment.

### CAUTION

Eiki International, Inc. assumes no responsibility for the loss or damage of data or damage of the computer caused by using this product.



The CE Mark is a Directive conformity mark of the European Community (EC).

#### NOTES ON Lithium Battery (CALIFORNIA USA ONLY)

This product uses a Lithium Battery which contains Perchlorate Material - special handling may apply. See [www.dtsc.ca.gov/hazardouswaste/perchlorate](http://www.dtsc.ca.gov/hazardouswaste/perchlorate)

#### Notas acerca de pilas de litio (SOLO PARA CALIFORNIA, EE.UU.)

Este producto usa una pila de litio que contiene el material perclorato – puede ser necesario una manipulación especial.

Consulte la página [www.dtsc.ca.gov/hazardouswaste/perchlorate](http://www.dtsc.ca.gov/hazardouswaste/perchlorate)

## Package contains

The package contains following items. Check each item as you unpack the package. If you have any of the following items missing, contact the sales dealer.



Network unit 1 piece



Quick Setup Guide  
English/Japanese 1 piece



Software CD-ROM 1 piece  
Network Viewer & Capture 3 software  
PJ Network Manager software



Document CD-ROM 1 piece  
Pj-to NetDirector Owner's Manual  
PJ Network Manager Owner's manual

## How to read the Owner's Manual on CD-ROM

The owner's manuals of PJ-Net Organizer are included on the supplied document CD-ROM as the PDF file format. To read the owner's manual, set the document CD-ROM onto your computer and follow the guide on the screen.

To read the owner's manual, you need the Adobe Reader (Adobe Acrobat Reader) version 6.0 or later software in your computer. The Adobe Reader can be obtained from the Adobe website (<http://www.adobe.com>).

## Operating environment

To perform the managing and setting of the projector by using this product, the environment described below is required.

		Standard mode
Operating System		Windows 98, Windows Me, Windows NT4.0SP6 Windows 2000, Windows XP
Computer environment	Recommended CPU	Higher than Pentium III 900MHz
	Memory	64MB (Minimum)/ 128MB or more(Recommended) 128MB or more for WindowsXP
	HDD free area	100MB or more
	Drive equipment	CD-ROM drive
	Display setting of computer	Support one of following resolutions; VGA (640 x 480), SVGA(800 x 600), XGA(1,024 x 768) Number of colors: Either of 16 bit (65,536 color 24/32 bit (16,77 million colors))
	Network card	The computer must provide a 10Base-T or 100Base-TX network card.
Web Browser*		Internet Explorer version 5.0, 5.5 or 6.0 Netscape Navigator version 6.2, 7.0 or 7.1 * Used to control and set up the projector. The layout of pages in the browser may slightly differ from each type of application or operating system you use.
Plug-Ins		Adobe Flash Player version 6,0,79,0(6.0r79) or later
Internet Mailer*		- Microsoft Outlook                      - Microsoft Outlook Express - Netscape Mail * Required the internet e-mail application software to receive an e-mail alert sent from this product. If you do not use the function E-mail Alert, this application is not required.
FTP Service *		- FTP server (Windows 2000 Professional or Windows XP Professional) * The FTP service provided with the Windows 2000 Professional or Windows XP Professional is required when using the Network Viewer function.

This product is designed for the projectors listed below.  
LC-X71 series, LC-XG250 series, LC-XG300 series and LC-X80 series

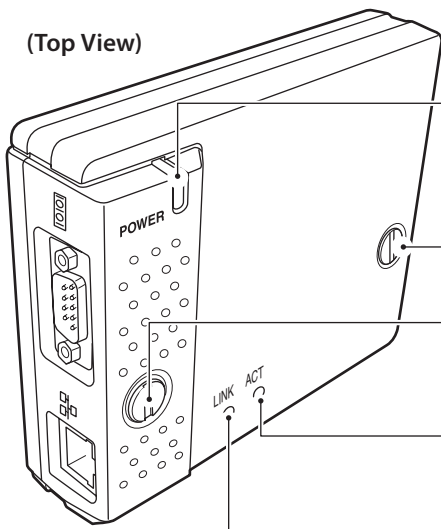
### PDA restriction

The PDA can be used for the Light mode\*1 only. The operating system of the PDA is PocketPC2002 or higher. The version of the Adobe Flash Player is 6,0,81,0 or higher.

\*1 The "Light Mode" and "Standard Mode" will be explained on item "Display Mode" (p.10)

## Name and function of each part

(Top View)



**POWER indicator**

This lights up red when the network function is set ON in the projector menu.

**Mounting screws**

Mount by using a coin etc.

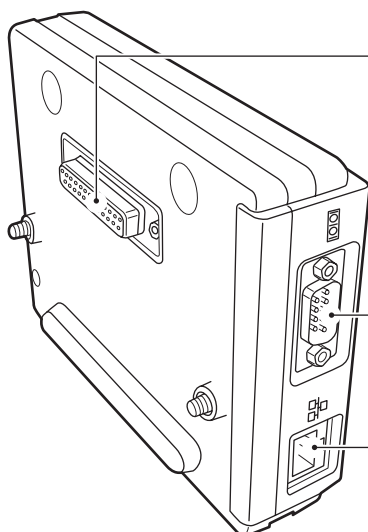
**ACT indicator**

This turns on and off with green when sending or receiving of data

**LINK indicator**

This lights up red when the network unit is connected to the network correctly.

(Bottom View)



**Connector plug**

Connecting to the terminal on the projector.

**Serial port**

Used to control the external equipment via the network.

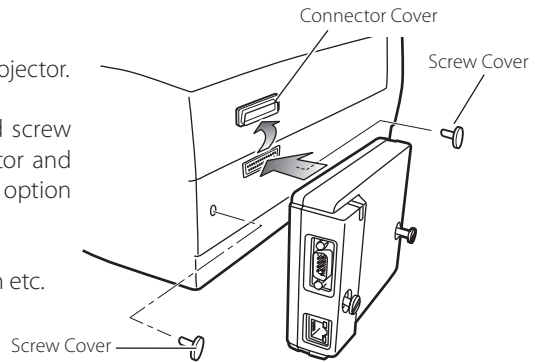
**LAN port**

Connecting the LAN cable.

## Installation and network configuration

### Mounting

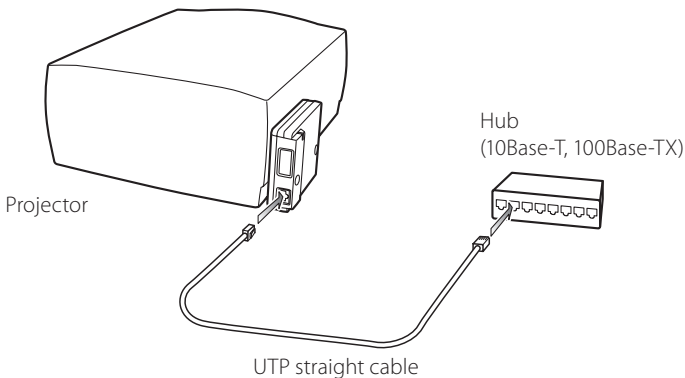
- 1** Disconnect the AC plug from the projector.
- 2** Remove the connector cover and screw covers (2 pieces) from the projector and insert plug on this product to the option connector.
- 3** Tighten two screws by using a coin etc.



### Connection of LAN cable

To connect to the network, it is required to use the UTP (Unshielded Twisted Pair) straight cable with RJ-45 plug. There are two different types of cables depending on whether the network is constructed with 10Base-T or 100Base-TX. Prepare the Hub (10Base-T or 100Base-TX) to distribute the network cable if required.

- 1** Disconnect the AC plug from the projector.
- 2** Connect the UTP straight cable to the LAN port on the network unit.
- 3** Connect the UTP straight cable to the hub.



- ⚠ AC cord must be disconnected when mounting or removing this product otherwise it may damage the product.
- ⚠ Use the UTP cross cable when you connect the computer and projector directly not using the hub.
- ⚠ When you connect the projector into the 10Base-T network, use cable with category 3 or 5. When you connect the projector into the 100Base-TX network, use cable with category 5.
- ⚠ The length of cable between hub and projector should be less than 100m.

## Network configuration

### Confirmation of the network menu

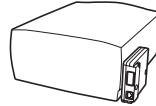
When installing this product to the projector, the network on-screen menu items for this product are activated automatically. If not activated, the product may not have been installed correctly. Please check item "Mounting" (p.7).

### Configure the network

Before performing the network configuration, prepare network address numbers (IP Address, Subnet Mask, Default Gateway, DNS) assigned to the projector. Ask your network administrator for the network address.

For example, the case where the following network address is set up is explained.

IP Address	: 192.168.1.201
Subnet Mask	: 255.255.255.0
Default Gateway	: 192.168.1.1
DNS	: 0.0.0.0



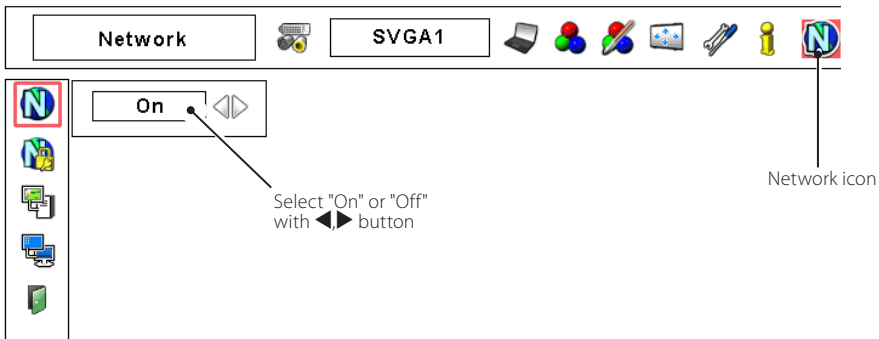
The default network configuration is set as follows.

IP Address	: 192.168.0.2
Subnet Mask	: 255.255.255.0
Default Gateway	: 0.0.0.0
DNS	: 0.0.0.0



### 1 Selection of network menu

Turn on the projector and display the menu on the screen. Select "Network setting" icon from the main menu and then press **SELECT** button once. Check that the mode is "On". If not, change mode to "On" using the point buttons (◀▶).



(Example of the screen display)

8 The network unit begins restarting each time the mode is set "On".



## 2 Configuration for IP Address/ Sub net/ Gateway\*1/DNS\*2

Press **SELECT** button again. The following network setting pallet appears on the screen. Enter the specified network addresses.

The red frame moves sequentially left or right with ◀▶ button. The number up or down with ▼▲ button.

IP address	192	168	1	201
Subnet	255	255	255	0
Gateway	192	168	1	1
DNS	0	0	0	0
	Set	Cancel		

(Example of the screen display)

\* Without the above method of using point buttons, there are some methods to set the network address, using the screen 10-key pallet or using the direct 10-key entering with the remote control. But these methods differ depending on each model of the projector. See PJ-Net Organizer Owner's manual on the CD-ROM for further instructions

## 3 Fixing the network configuration

After completing the entering of address, select "Set" and press **SELECT** button. The network unit starts re-booting and displays message "Please wait..." on the screen until the re-booting is complete. Do not disconnect the AC cord during this period. After that the network setting pallet will disappear on the screen.



(Example of the screen display)

## Completing of installation

Now the installation is complete. The IP address of this projector is set to "192.168.1.201".

Item	Description
IP address .....	Sets IP address of the projector
Sub net.....	Sets Subnet mask. Normally sets 255.255.255.0
Gateway*1 .....	Sets IP address of the default gateway (Router)
DNS*2 .....	Sets IP address of the DNS server. Must be set when using the e-mail function

☞ Refer to the projector's owner's manual for operation of the projector.

\*1 In the network environments not using a Gateway or Router, the Gateway address should be set to [0.0.0.0].

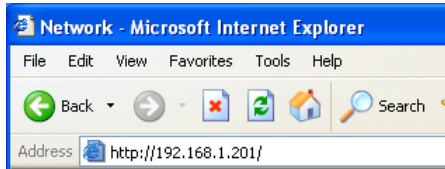
\*2 If you do not use the functions E-mail or DNS server, it is also set [0.0.0.0] for the DNS address.

# Login the setting page of the projector

## 1 Enter the IP address

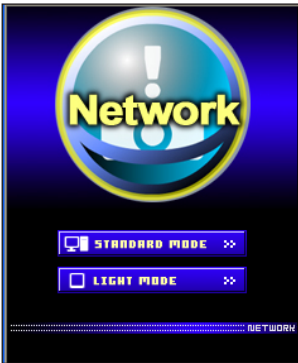
Launch the web browser installed in your computer, enter the IP address into the "Address" on the browser and then press "Enter" key.

Enter the address (192.168.1.201) that you configured in item "Network configuration" (p.9). The default IP address is [192.168.0.2].



## 2 Select a display mode and login

This product provides 2 types of control mode, Standard Mode and Light Mode as the below. Select a proper mode to match your PC and network environment by clicking on the text link.



### STANDARD MODE

For computer display, displays graphical menus and settings. This mode is recommended for standard use.

### LIGHT MODE

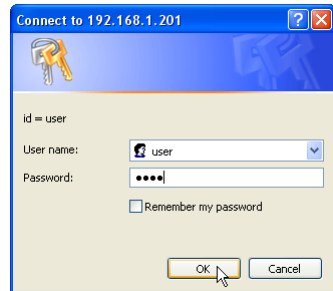
Displays with 200 x 300 dots. This mode is optimized for use of the handheld computer, PDA, etc. It is also convenient if the network traffic is heavy. (This mode has some limitations on the network viewer and multi-control functions.)

If the setting page has set the password, the authentication window will appear. In this case type "user" onto the **User Name** text area and the login Network PIN code onto the **Password** text area and then click **OK** button.

\* The entering User Name must be "user" and it can not be changed.

[Note]

When accessing the projector for the first time or the Network PIN code "0000" is set, the auto-login will be performed and the next main setting page is displayed.



### 3 Display of main setting page

The following main setting page will be displayed according to your display mode selection. Perform various kinds of settings through this page. Click on the menus to display the control and setting pages.

#### 1 Main setting page in the Standard Mode display

**Control**

2005/9/7 (Wed) 19:30:33 ON / OFF

Control

Input System

Image adj. Menu

1 2

Contrast 32

Brightness 32

Color --

Tint --

**Initial setting**

**Power & Status**

**PC Adj.**

**Control**

**Setting**

**E-mail setting**

**Save**

**Network**

**Multimedia control**

**Timer**

**Information**

**SNMP setting**

**TOP**

**Clock display**  
Display on or off by clicking text ON or OFF

**Sub menu tab**  
Switches the sub menu tab

**Page numbers**  
Switches the pages by clicking the number's tab

**Main menu**  
For selection of control and setting items of the projector

**Setting page**  
Displays the control and setting items according to the selected menu

Returns to Display Mode selection page (p.10)

☞ If your computer does not have the Adobe Flash Player version 6 or later, follow to the message on the control page to install the Adobe Flash Player. For further product information or installing, see the Adobe website. <http://www.adobe.com>

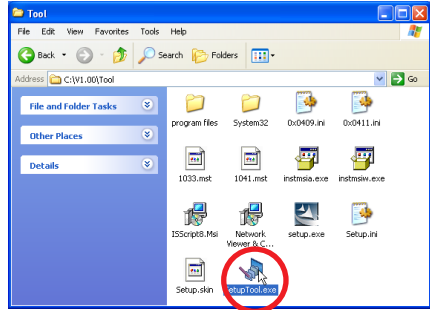


## Installing the software

To install the software into the computer with Windows 2000, Windows XP or Windows NT, you should logon as administrator. Before installation, make sure that the other applications are closed, otherwise installation cannot be made properly.

### Network Viewer & Capture 3 installation

- 1 Set the supplied Network Viewer & Capture 3 CD-ROM into the CD-ROM drive of your computer. Double click **SetupTool.exe** icon in the "Tool" folder in the CD-ROM.
- 2 Select "English [United States]" from the pull-down menu on the "Choose Setup Language" window and click **OK** button to start installing and then follow the installation wizards.



### Installed software

The following 3 software are installed on your computer.

#### ● **Network Capture 3:**

Capture the displayed image of the computer and serve it to the projector via the network. This software is registered into "startup folder" of the computer and the capture icon stays on the task bar after booting the computer.

#### ● **Network Viewer 3 (File Converter 1):**

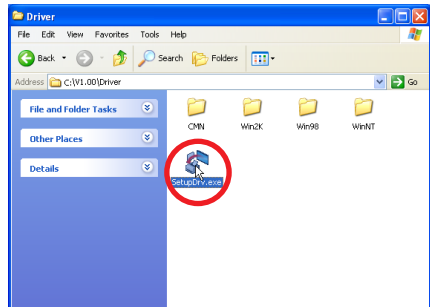
Converts to the JPEG data format which can be projected with the projector from the JPEG, bitmap and Power Point files.

#### ● **Network Viewer 3 (Program Editor) :**

This is a tool to make the program which has a function to specify and order the projecting JPEG image data stored in the file servers.

### File Converter 2 Installation

- 1 Set the supplied Network Viewer & Capture 3 CD-ROM into the CD-ROM drive of your computer. Double click **SetupDrv.exe** icon in the "Driver" folder in the CD-ROM.
- 2 Select "English [United States]" from the pull-down menu on the language selection window and then click **Install** button to start installing.

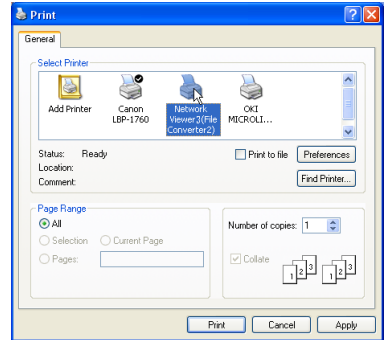


## Installed software and places

Network Viewer 3 (File Converter 2) is installed in the "Printers and Faxes" folder in the "Control Panel".

### ● **Network Viewer 3 (File Converter 2):**

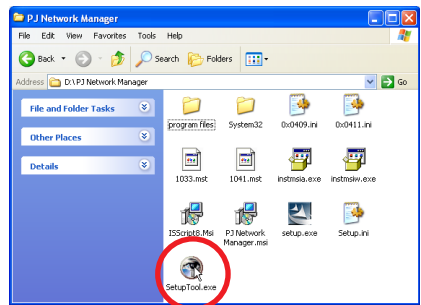
This is a kind of the printer driver to convert to the JPEG data optimized to project by the projector from any of the documents created by the application software.



## PJ Network Manager installation

1 Set the supplied CD-ROM into the CD-ROM drive of your computer. Double click **SetupTool.exe** icon in the "PJ Network Manager" folder in the CD-ROM.

2 Select "[English [United States]]" from the pull-down menu on the "Choose Setup Language" window and click **OK** button to start installing and then follow the installation wizards.



### ● **What's PJ Network Manager**

PJ Network Manager is a SNMP manager software for the network equipment which supports the private MIB (Management Information Base).

By installing the PJ Network Manager to the computer, you can monitor the equipment simply such as the projector, the projection monitor and the flat display monitor connected to the network.

For further instructions, see PJ Network Manager Owner's Manual included on the CD-ROM.

**This software supports the below Operating System only.**

Windows 2000 Professional SP4  
Windows XP Home Edition SP1  
Windows XP Professional SP1

# EIKI

## **U.S.A.**

EIKI International, Inc.  
30251 Esperanza  
Rancho Santa Margarita  
CA 92688-2132  
U.S.A.  
Tel : 800-242-3454 (949)-457-0200  
Fax : 800-457-3454 (949)-457-7878  
E-Mail : usa@eiki.com

## **Deutschland & Österreich**

EIKI Deutschland GmbH  
Am Frauwald 12  
65510 Idstein  
Deutschland  
Tel : 06126-9371-0  
Fax : 06126-9371-14  
E-Mail : info@eiki.de

## **China**

EIKI (Shanghai) Co.,LTD  
1. Dapu Road, Golden Magnolia  
Plaza #2109 Shanghai,  
200023 China  
Tel : 86-21-5396-0088  
Fax : 86-21-5396-0318  
E-Mail : info@eiki-china.com

## **Canada**

EIKI CANADA - Eiki International, Inc.  
P.O. Box 156, 310 First St. - Unit 2,  
Midland, ON, L4R 4K8, Canada  
Tel : 800-563-3454 (705)-527-4084  
Fax : 800-567-4069 (705)-527-4087  
E-Mail : canada@eiki.com

## **Eastern Europe**

EIKI CZECH spol. s.r.o.  
Umělecká 15  
170 00 Praha 7  
Czech Republic  
Tel : +42 02 20570024  
+42 02 20571413  
Fax : +42 02 20571411  
E-Mail : easterneurope@eiki.de

## **Japan & Worldwide**

EIKI Industrial Company Limited.  
4-12 Banzai-Cho, Kita-Ku, Osaka,  
530-0028 Japan  
Tel : +81-6-6311-9479  
Fax : +81-6-6311-8486

**WorldWide Website <http://www.eiki.com>**

## Free Manuals Download Website

<http://myh66.com>

<http://usermanuals.us>

<http://www.somanuals.com>

<http://www.4manuals.cc>

<http://www.manual-lib.com>

<http://www.404manual.com>

<http://www.luxmanual.com>

<http://aubethermostatmanual.com>

Golf course search by state

<http://golfingnear.com>

Email search by domain

<http://emailbydomain.com>

Auto manuals search

<http://auto.somanuals.com>

TV manuals search

<http://tv.somanuals.com>