

User's Manual

eClient[®] 530L/531L

LCD Monitor integrated
Windows-based Terminal

531LT-GR

Touch Panel
LCD Monitor integrated
Windows-based Terminal

IMPORTANT

Please confirm the version of the software built in eClient, and refer to the suited User's Manual (Refer to the User's Manual Version List on next page).

This is the manual for the following software version.

- * Microsoft Windows CE: 2.12 Rev.3.53 or later
- * Microsoft Terminal Server Client: Ver.5.60 or later
- * ICA Client: Ver.6.30 [Build 1078] or later

CAUTION

Please carefully read the PRECAUTION section in the user's manual enclosed with the unit before using the unit.

This product has been adjusted specifically for use in the region to which it was originally shipped. If operated outside the region to which it was originally shipped, the product may not perform as stated in the specifications.



User's Manual Version List

A handling description changes with versions of the software built in eClient. Please refer to below.

NOTE

- The version of software built in eClient can be checked with a [System]-[ICA] tab of [Terminal Properties].

OS: Microsoft Windows CE 2.12

Software Manual	Microsoft Windows CE	Microsoft Windows Terminal Server	ICA Client Software
C (This Manual)	2.12 Rev.3.53 or later	Version 5.60 or later	Version 6.30 [Build1078] or later
B	2.12 Rev.3.51 or later	Version 5.60 or later	Version 6.20 [Build992] or later
A	2.12 Rev.3.50 or later	Version 5.51 or later	Version 6.20 [Build992] or later

SAFETY SYMBOLS

This manual uses the safety symbols below. They denote critical information. Please read them carefully.



WARNING

Failure to abide by the information in a WARNING may result in serious injury and can be life threatening.



CAUTION

Failure to abide by the information in a CAUTION may result in moderate injury and/or property or product damage.



Indicates a prohibited action.



Indicates to ground for safety.

Copyright© 2002-2003 EIZO NANA O CORPORATION All rights reserved. No part of this manual may be reproduced, stored in a retrieval system, or transmitted, in any form or by any means, electronic, mechanical, or otherwise, without the prior written permission of Eizo Nanao Corporation.

Eizo Nanao Corporation is under no obligation to hold any submitted material or information confidential unless prior arrangements are made pursuant to Eizo Nanao Corporation's receipt of said information. Although every effort has been made to ensure that this manual provides up-to-date information, please note that EIZO monitor specifications are subject to change without notice.

ENERGY STAR is a U.S. registered mark.

Apple and Macintosh are registered trademarks of Apple Computer, Inc.

VGA is a registered trademark of International Business Machines Corporation.

DPMS is a trademark and VESA is a registered trademark of Video Electronics Standards Association.

Windows is a registered trademark of Microsoft Corporation.

ScreenManager and PowerManager are trademarks of Eizo Nanao Corporation.

FlexScan and EIZO are registered trademarks of Eizo Nanao Corporation.



As an ENERGY STAR® Partner, Eizo Nanao Corporation has determined that this product meets the ENERGY STAR guidelines for energy efficiency.

TABLE OF CONTENTS

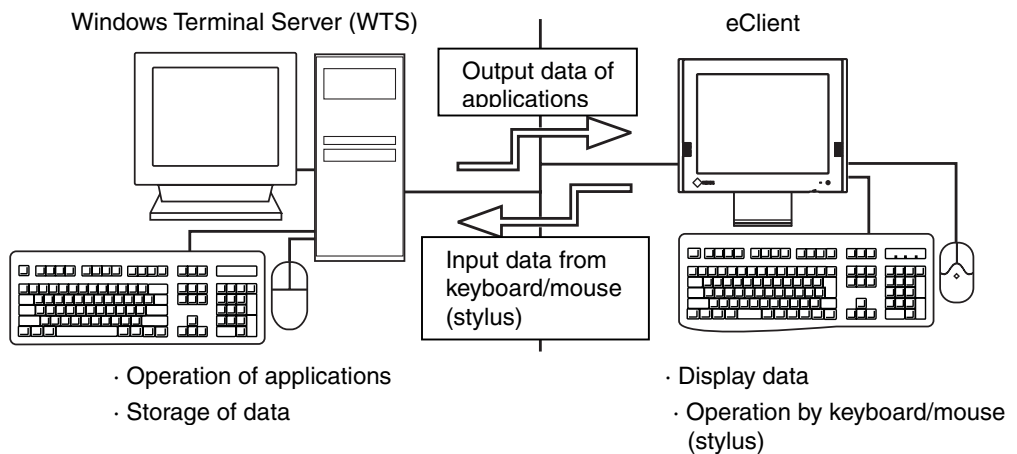
1. INTRODUCTION	5
1-1. General Description	5
1-2. Features	6
1-3. Package Contents.....	6
1-4. Controls & Connectors	7
1-5. Overview	9
2. CONNECTING THE eClient	10
2-1. Setting up the eClient.....	10
2-2. Connecting the eClient.....	11
3. SETTING UP THE eClient	13
3-1. WBT Setup Wizard	13
3-2. Dial-Up Connection (531L/531LT-GR only).....	27
4. ADDING & CHANGING A CONNETION NAME	34
4-1. Adding a Connection Name.....	34
4-2. Deleting a Connection	52
4-3. Editing a Connection	53
4-4. Setting an Autostart Connection	55
5. LOGON & LOGOFF	56
5-1. Logon to a WTS	56
5-2. Logoff from the WTS.....	59
6. USING THE TERMINAL PROPERTIES	61
6-1. General Information & Reset to Default	61
6-2. Input Devices Settings	63
6-3. Colors & Power Save Settings.....	68
6-4. Network Settings	70
6-5. Printer Settings.....	73
6-6. Dial-Up (PPP) Connection Settings (531L/531LT-GR only)	76
6-7. ICA Settings.....	77
6-8. Product Information, Security, & Updating Software	80
7. PRACTICAL SETUP	87
8. TROUBLESHOOTING	92
9. CLEANING	94
10. SPECIFICATIONS	96
11. REFERENCE	100
11-1. Attaching an Arm Stand	100
INDEX	102

1. INTRODUCTION

Thank you very much for purchasing the EIZO eClient 530L/531L/531LT-GR.

1-1. General Description

The eClient is a terminal which displays applications on a Windows Terminal Server (WTS) or a web site and conveys input by a keyboard or a mouse to the WTS. To operate the eClient, please connect it to a WTS with Microsoft Window NT Terminal Server Edition or Windows 2000 Server / Advanced Server / Datacenter Server.



1-2. Features

- Lower TCO*
 - *TCO (Total Cost of Ownership)
Expense for managing and administrating computer systems.
- Saves Space and Power Consumption
- Less Heat, Less Noise
- 531L/531LT-GR
 - * Serial Port for Modem/PDA (*Hayes AT Compatible Modem Supported)
 - * Portrait resolution supported
[In use of the Citrix ICA Client (ICA)]
- 531LT-GR
 - * A Touch Panel and a Stylus Provided

1-3. Package Contents

Please contact your local dealer for assistance if any of the listed items are missing or damaged. Please make sure that all the listed items are in the package.

- eClient 530L/531L/531LT-GR
- Mouse
- Power Cord
- Screw (M4 x 12 mm) x 4
- User's Manual
- Stickers of the Brightness Control Guide
- Stylus (531LT-GR only)

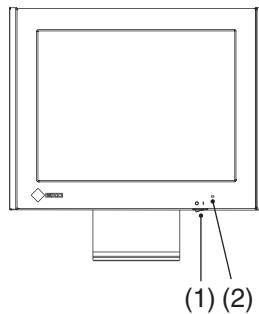
NOTE

- We recommend that you retain the original packing materials in case of future need.
- A keyboard is not included. It must be purchased separately.
- Key combinations on the keyboard can adjust brightness (see page 69). Key combinations for an adjustment are presented on the stickers. Please apply them for your convenience.

Please use the enclosed mouse. Eizo Nanao Corporation will not be held responsible for accident or damage caused by the use of a mouse manufactured by other companies.

1-4. Controls & Connectors

Front



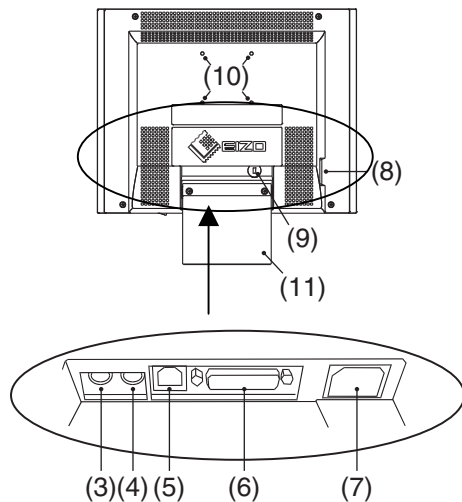
- (1) Power Switch
- (2) Power Indicator

Power Indicator	Unit
Green	Operation Screen saver mode
Yellow	Power save mode

NOTE

- When turning off/on the unit, leave the unit off for a few seconds before turning it on again.

Rear



- (3) Mouse Connector
- (4) Keyboard Connector
- (5) Ethernet Connector (10 Base-T)
- (6) Parallel Connector
- (7) Power Connector
- (8) Serial Connector (RS-232C) (531L/531LT-GR)
- (9) Security Lock^{*1}
- (10) Holes for Mounting an Arm Stand^{*2}
- (11) Stand

^{*1} This allows for connection of a security cable. This lock supports Kensington's MicroSaver security system. For further information, please consult:

Kensington Technology Group
2855 Campus Drive, San Mateo, CA
94403 USA

1-800-650-4242, x3348

Intl: 650-572-2700

Fax: 650-572-9675

<http://www.kensington.com>

^{*2} Please see "11. REFERENCE" on page 100 for details.

1-5. Overview

Directions for the eClient's Setup

2. CONNECTING THE		p.10
3. SETTING UP THE eClient		
	3-1. WBT Setup Wizard	p.13
	3-2. Dial-Up Connection	p.27
4. ADDING & CHANGING A CONNETION NAME		
	4-1. Adding a Connection Name	p.34
	4-2. Deleting a Connection	p.52
	4-3. Editing a Connection	p.53
	4-4. Setting an Autostart Connection	p.55

Directions for the eClient's Operation.

5. LOGON & LOGOFF		
	5-1. Logon to a WTS	p.56
	5-2. Logoff from the WTS	p.59

Directions for Changing Terminal Properties' Settings.

6. USING THE TERMINAL PROPERTIES		
	6-1. General Information & Reset to Default	p.61
	6-2. Input Devices Settings	p.63
	6-3. Colors & Power Save Settings	p.68
	6-4. Network Settings	p.70
	6-5. Printer Settings	p.73
	6-6. Dial-Up (PPP) Connection Settings	p.76
	6-7. ICA Settings	p.77
	6-8. Product Information, Security, & Updating Software	p.80

Directions for Using a DHCP Server, a Practical Setup

7. PRACTICAL SETUP		p.87
--------------------	--	------

2. CONNECTING THE eClient

This chapter shows how to connect the eClient to a WTS.

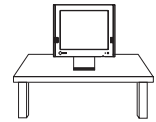
2-1. Setting up the eClient

Please observe the following cautions when connecting the eClient.

WARNING

Place the eClient on a strong, stable surface.

A unit placed on an inadequate surface may fall, resulting in injury or equipment damage. If the unit falls, disconnect the power immediately and have the unit checked by a qualified service engineer before using it again. Using a unit after it has been dropped may result in fire or electric shock.



Set the unit in an appropriate location.

- * Do not install in a dusty or humid environment.
 - * Do not place in a location where steam can have direct contact with the screen.
 - * Do not place near heat generating devices or a humidifier.
-

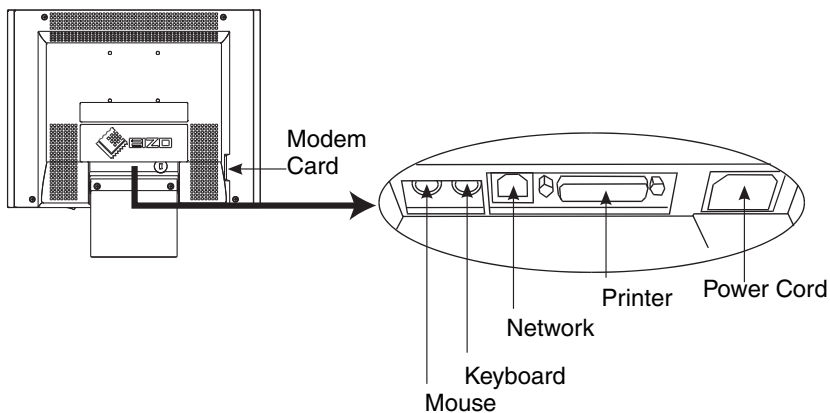
2-2. Connecting the eClient

NOTE

- Before connecting the eClient, confirm the following:
 - The eClient is turned off.
 - The WTS is turned on.
- Connect the peripherals to the appropriate connectors of the unit.

- 1. In case of connecting the WTS through LAN:**
Connect the eClient to the network with an ethernet cable.

In case of a dial-up or dial-in connection (531L/531LT-GR only):
Connect the eClient to a modem or a modem card.



- 2. Plug a keyboard and a mouse into the eClient. If using other devices, please connect them to the appropriate connectors.**

If using a touch panel, a mouse should not be connected (531LT-GR only).

3. Plug the power cord into the power connector.

 **WARNING**

Use the enclosed power cord and connect to the standard power outlet of your country.

Be sure to remain within the rated voltage of the power cord.

Not doing so may cause in fire or electric shock.

The equipment must be connected to a grounded main outlet.

Not doing so may cause in fire or electric shock.



3. SETTING UP THE eClient

This chapter presents how to prepare for a connection with a WTS when the eClient starts up for the first time.

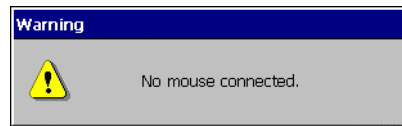
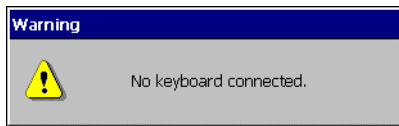
3-1. WBT Setup Wizard

1. Turn on the power switch.

The power indicator turns green.

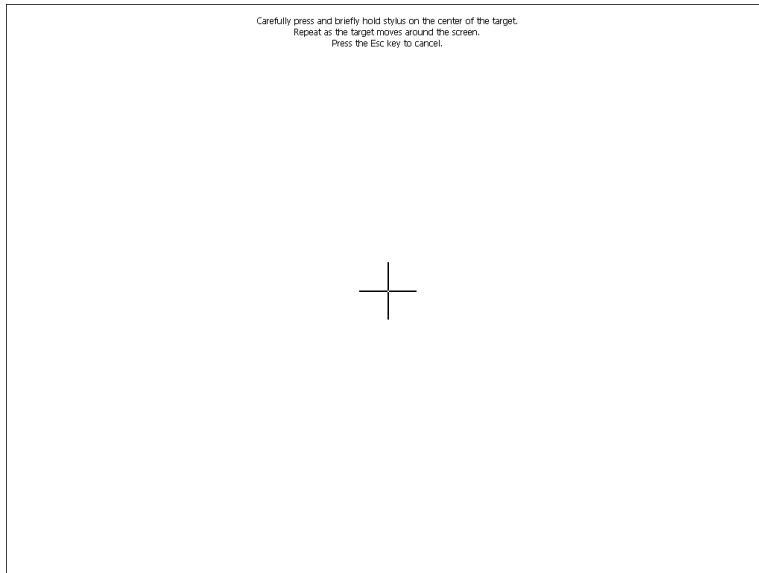
NOTE

- When no picture is displayed, or when the following message is shown on the screen, please refer to “8. Troubleshooting” on page 92.
 - Message -



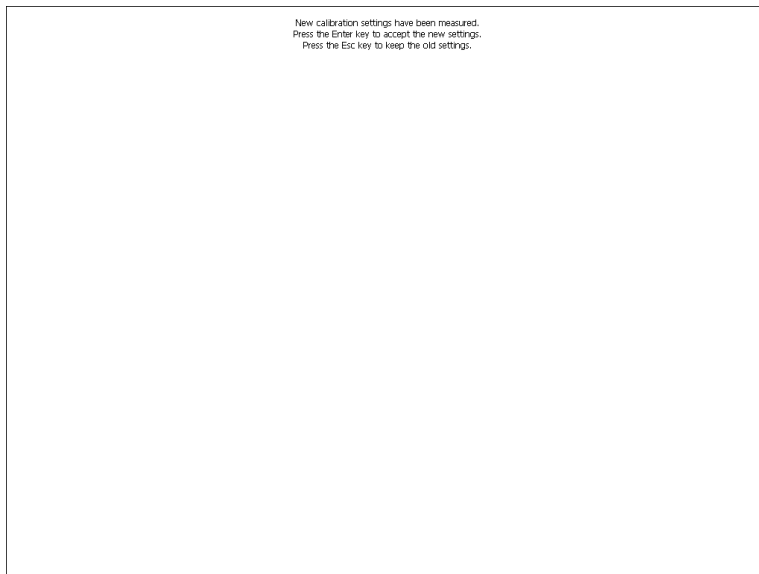
In use of a stylus or a finger as an input device, “No Mouse Connected!!” caution does not effect your operation (531LT-GR only).

2. “Touch panel calibration” is displayed (531LT-GR only).



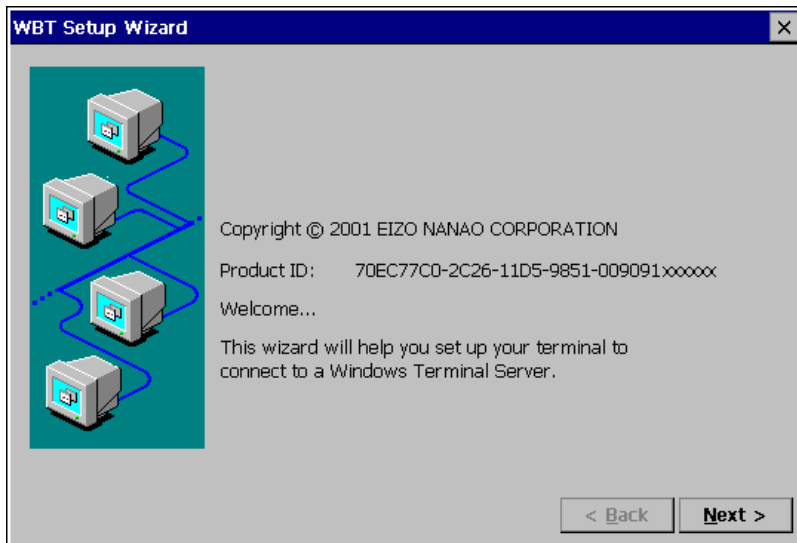
Five targets are displayed on the screen. Press the targets with a stylus or a fingertip to locate the center of the touch panel. If you accidentally touched the screen in the wrong spot during calibration, you will distort the touch panel calibration.

3. “Calibration measured” window is displayed when you finished (531LT-GR only).



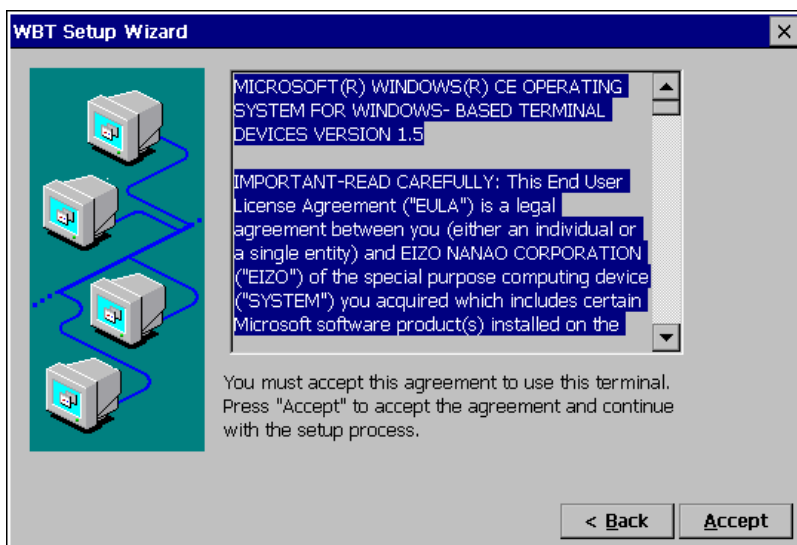
Click the “Enter” key to accept the settings.

4. “WBT Setup Wizard” is displayed.



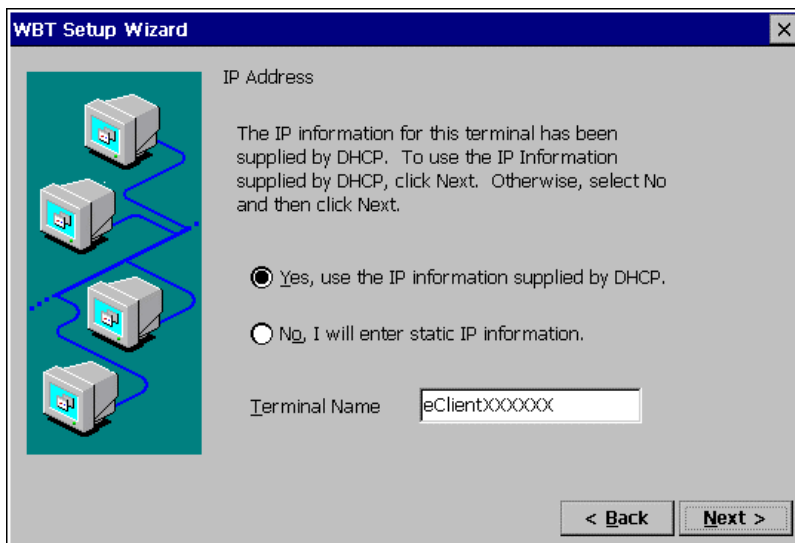
Click [Next>].

5. End User License Agreement page is displayed.



Read the content and click [Accept] to continue.

6. IP address setting page is displayed.

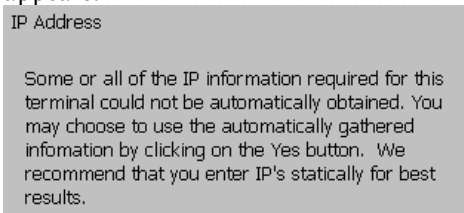


[Yes, use the IP information supplied by DHCP.]

.....Select this when using DHCP service. All the necessary information of the eClient including the IP address will be obtained by the DHCP.

[No, I will enter static IP information.]

.....Select this when not using DHCP service. Enter the IP address of the eClient. If DHCP service is not in operation, following message appears.



Type a [Terminal Name] for connection to a WTS by the RDP (Microsoft Remote Desktop Client) protocol.

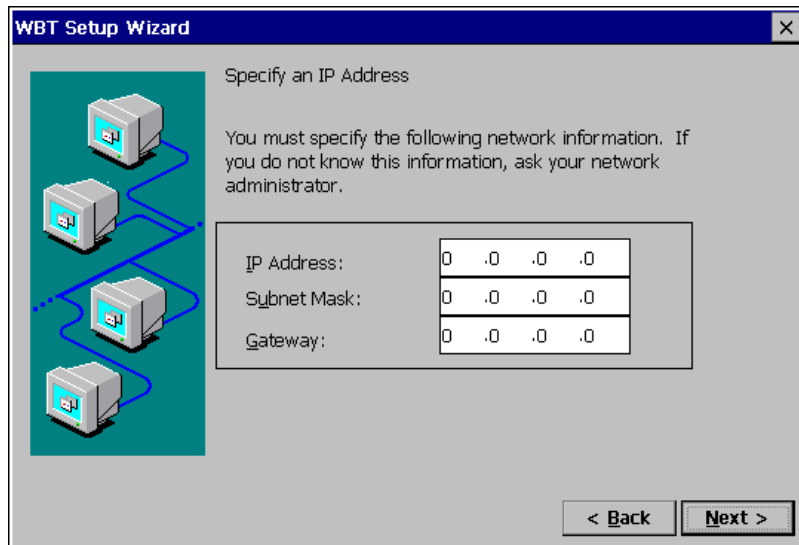
[Terminal Name]Type the name to identify this unit on the network.

Click [Next>].

Refer to step 8 if you select [Yes, use the IP information supplied by DHCP.]

Refer to step 7 if you select [No, I will enter static IP information.]

7. IP address page is displayed.



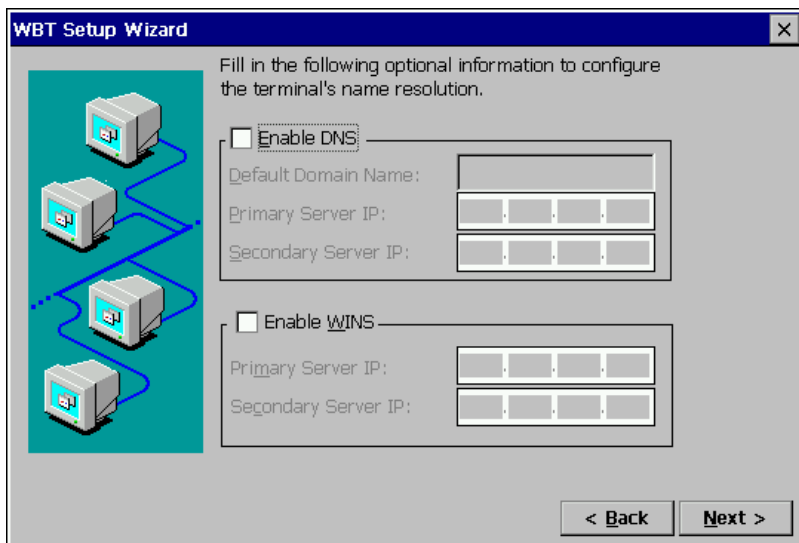
[IP Address] Type the IP address of the unit.

[Subnet Mask] Type the subnet mask of the network.

[Gateway] Type IP address of the Gateway machine if necessary.

Click [Next>] when finished.

8. DNS and WINS settings page is displayed.



This check box should be marked when DNS or WINS is used.

NOTE

- Skip the page by clicking [Next>] if DNS or WINS is not used.

If using DNS

Click the [Enable DNS] check box to activate this box.

[Default Domain Name]Type the default domain name.

[Primary Server IP].....Type the DNS primary Server IP address.

[Secondary Server IP]Type the DNS secondary Server IP address.

If using WINS

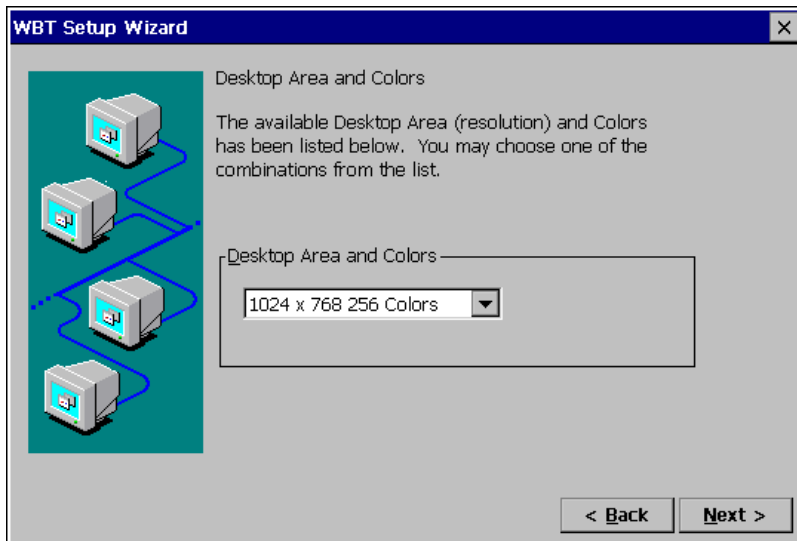
Click the [Enable WINS] check box to activate this box.

[Primary Server IP].....Type the WINS primary Server IP address.

[Secondary Server IP]Type the WINS secondary Server IP address.

Click [Next>] when finished.

9. Desktop area resolution and color settings page is displayed.



Select the preferable display mode from the two available modes:

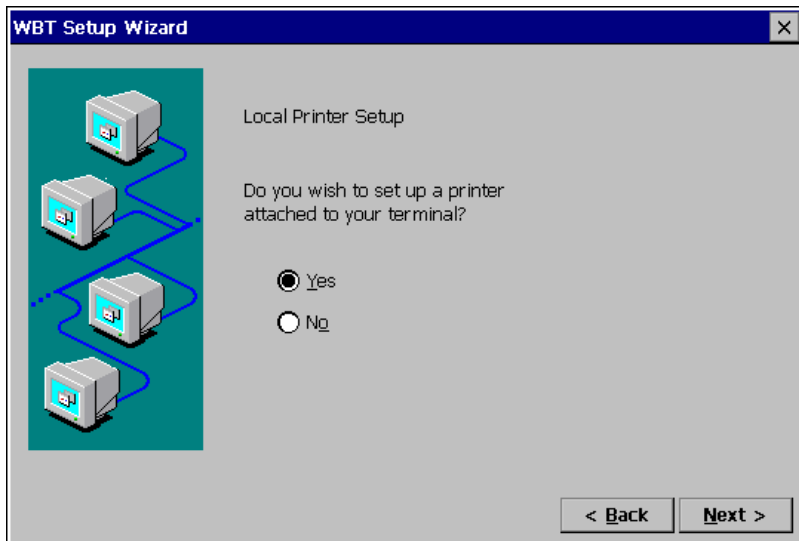
- 1024 x 768 (256 colors)
- 1024 x 768 (65,536 colors)
- 768 x 1024 (256 colors) (531L/531LT-GR only)
- 768 x1024 (65,536 colors) (531L/531LT-GR only)

NOTE

- The orientation of 768 x 1024 is a portrait. (768 x 1024 available for Citrix ICA. When RDP is used, 640 x 480 is displayed on center of the screen.) To use the portrait orientation mode, please change the monitor's tilt stand to an arm, and set the monitor portrait (90° clockwise).

Click [Next>] when finished.

10. Local Printer Setup page is displayed.



NOTE

- The following is required to install a local printer;
 - * A printer is connected to the printer port or the serial connector of the eClient.
 - * An RDP protocol is used for connection to a WTS.
 - * Microsoft Windows 2000 Server / Advanced Server / Datacenter Server is installed in a WTS
- A Local Printer mentioned here is a printer connected directly to the Parallel Connector of the unit.

Select [Yes] when using a local printer.

Select [No] in the following cases:

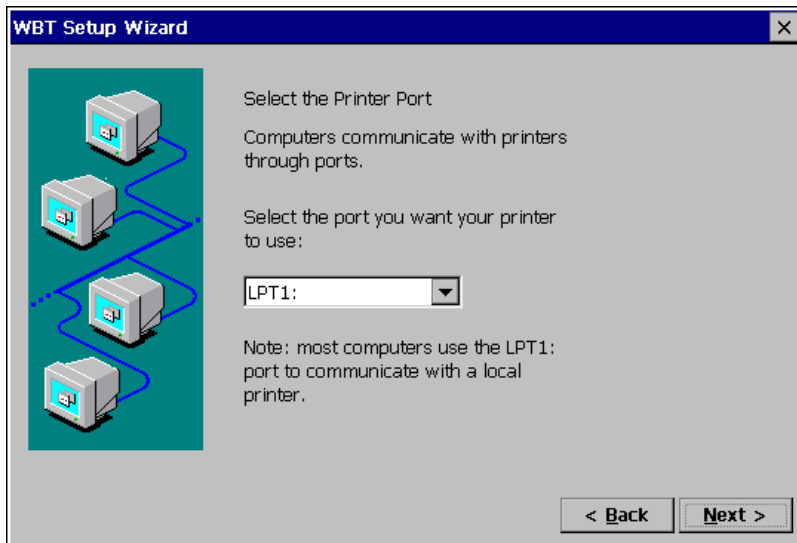
- * When not using a Local Printer
- * When using a ICA protocol for connection to a Server
- * When the OS of the Server is Windows NT Server 4.0 Terminal Server Edition

Click [Next>] when finished.

Refer to step 11 if selecting [Yes].

Refer to step 17 if selecting [No].

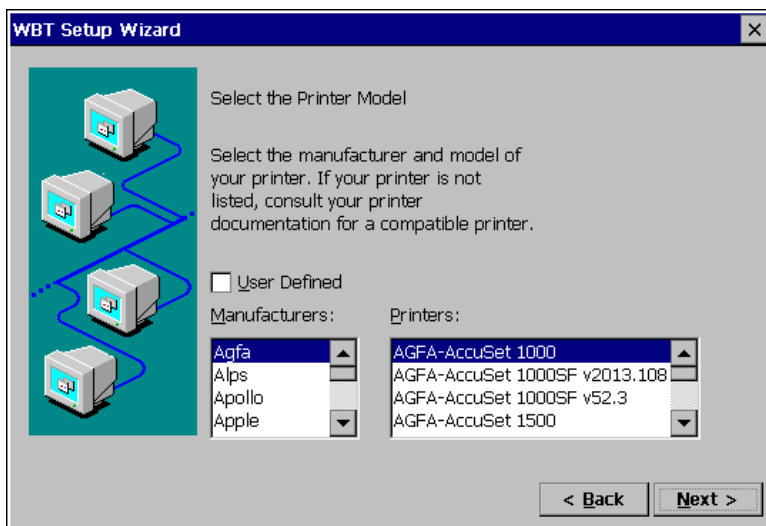
11. Printer port selection page is displayed.



Select a printer port.
The eClient supports LPT1.

Click [Next>].

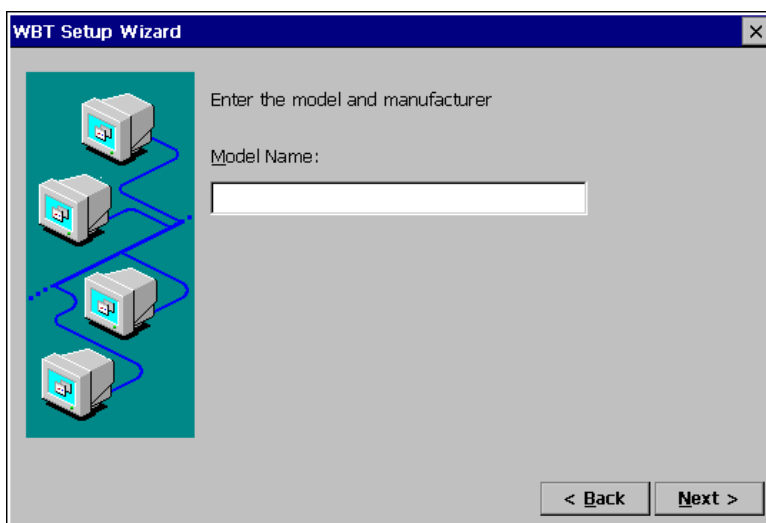
12. Printer model selection page is displayed.



Select a manufacturer and model of your printer.
[User Defined].....Click the check box if your printer is not listed.

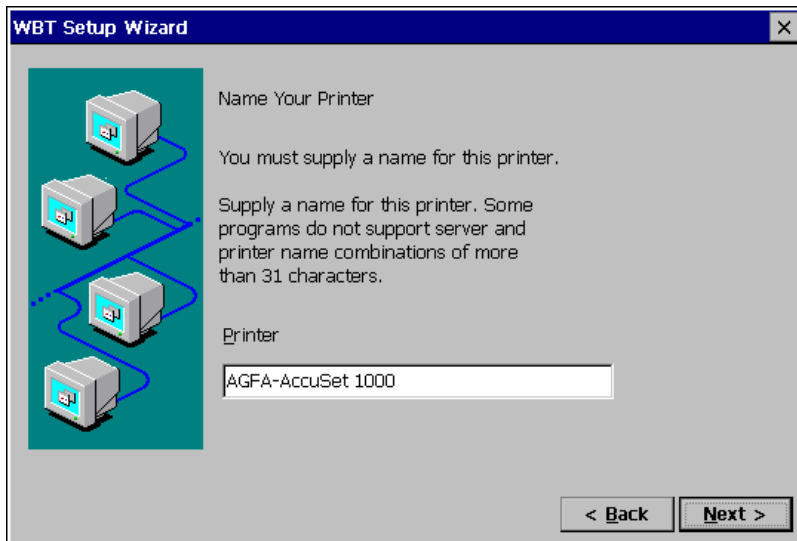
Click [Next>] when finished.
Refer to step 13 if clicking [User Defined].
Refer to step 14 if not clicking [User Defined].

13. Printer model and manufacturer settings page is displayed.



[Model Name]Type a model and manufacturer of your printer.
Click [Next>] when finished.

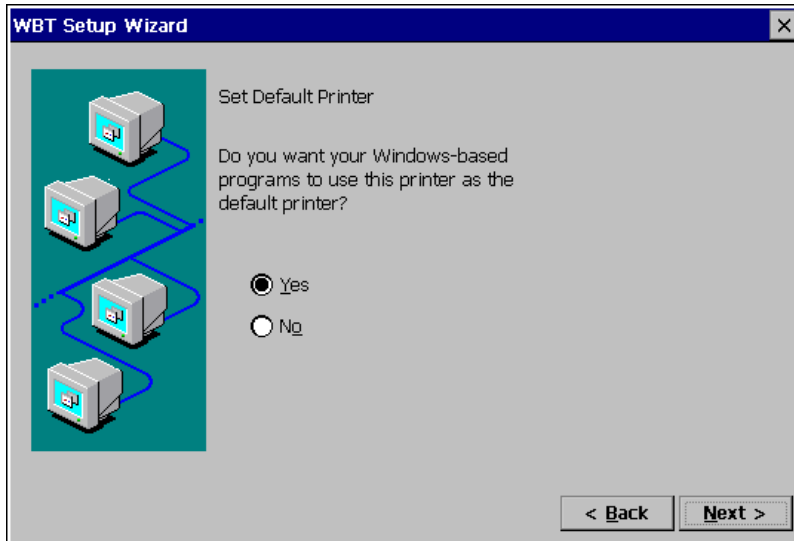
14. Printer name setting page is displayed.



Name the printer or use the indicated name. (Some programs do not support the Server and the printer name combinations of more than 31 characters.)

Click [Next>] when finished.

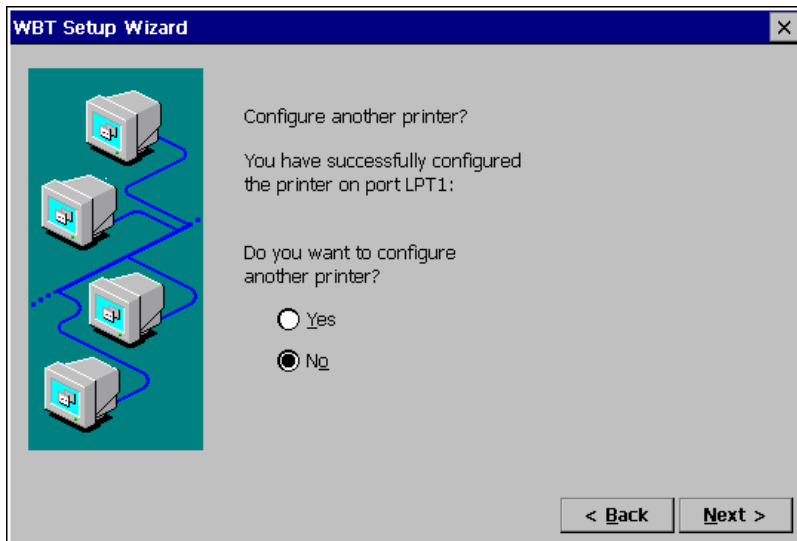
15. Default printer setting page is displayed.



Select [Yes] to set this printer as the default printer.
Select [No] not to set this printer as the default printer.

Click [Next>].

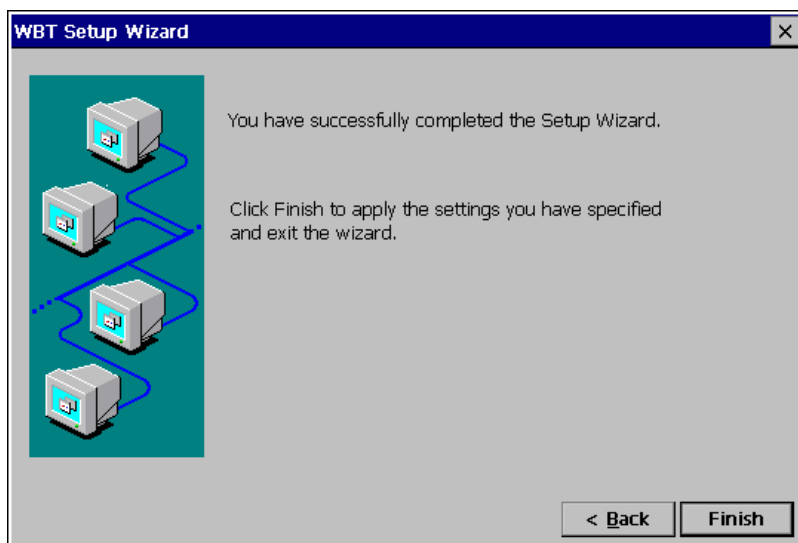
16. Another printer configuration page is displayed.



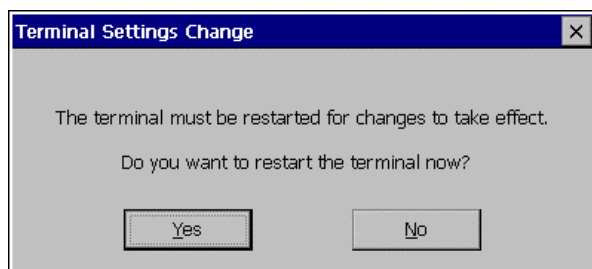
Select [Yes] to configure another printer.
Select [No] to finish printer settings.

Click [Next>] when finished.
Refer to step 11 if selecting [Yes].
Refer to step 17 if selecting [No].

17. The last page of the “WBT Setup Wizard” is displayed.



Click [Finish] in the last page to display a “Terminal Settings change” dialog box. (This dialog box is displayed only when there are changes in the settings.)



Click [Yes] to restart the eClient to activate the changes.

- Click [No] to finish the “WBT Setup Wizard” and display “Terminal Connection Manager” on the screen. The setting is not activated until the eClient is restarted.

This completes the eClient settings.

The “Terminal Connection Manager” dialog box will be displayed after restarting.

NOTE

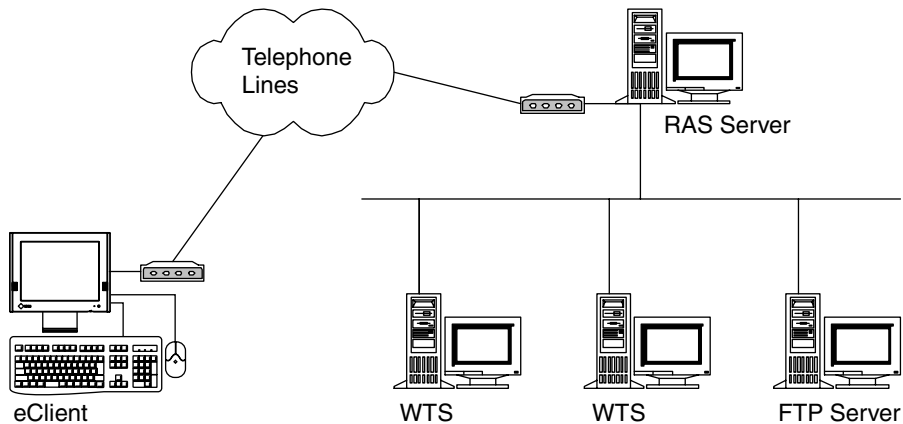
- When you are connecting to the WTS with a LAN card, another installation for a LAN card connection must be completed. Please follow the next page.
- When you are connecting to the WTS with a modem, another installation for a modem connection (a dial-up connection) must be completed. Please follow the “3-2. Dial-up Connection”, page 27.

3-2. Dial-Up Connection (531L/531LT-GR only)

The following details the installation of a dial-up connection for RAS (Remote Access Service).

No restriction of the protocol is made for the “Dial-up connection”. To use a dial-up connection requires an RAS server in operation.

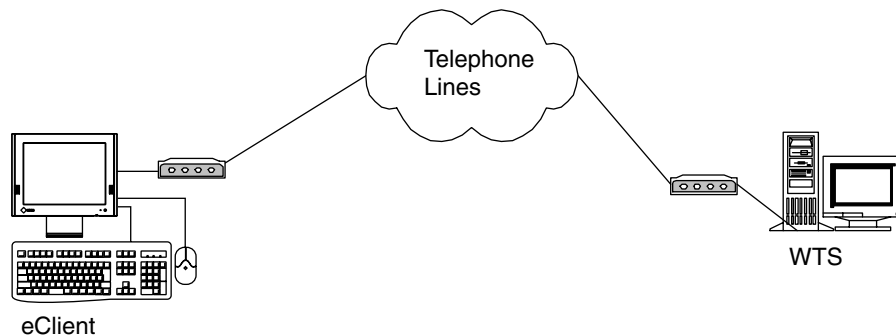
[Dial-up Connection]



NOTE

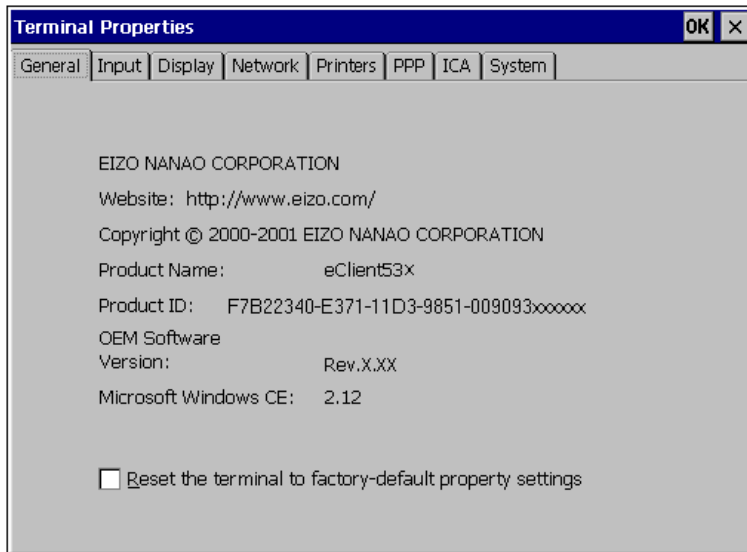
- Another type of connection using a modem, a dial-in connection, is available to connect to the WTS with an ICA protocol. Please see page 40.

[Dial-in Connection]



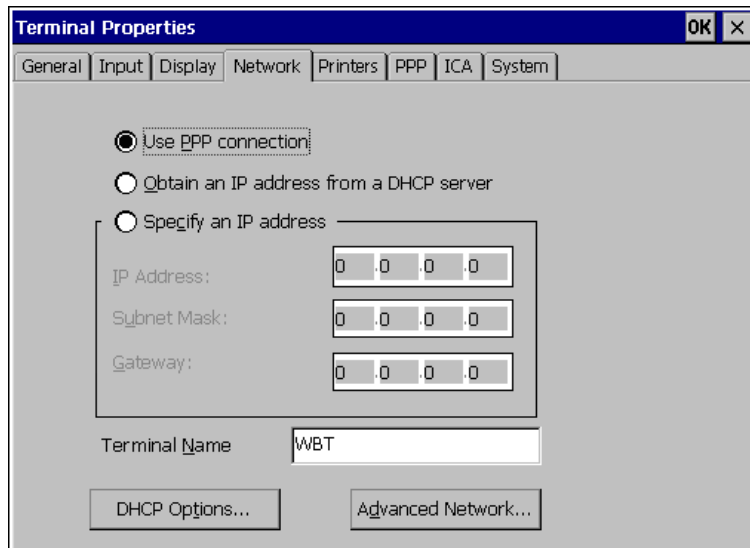
1. Press “F2” key in the “Terminal Connection Manager”.

2. “Terminal Properties” is displayed.



Click the [Network] tab.

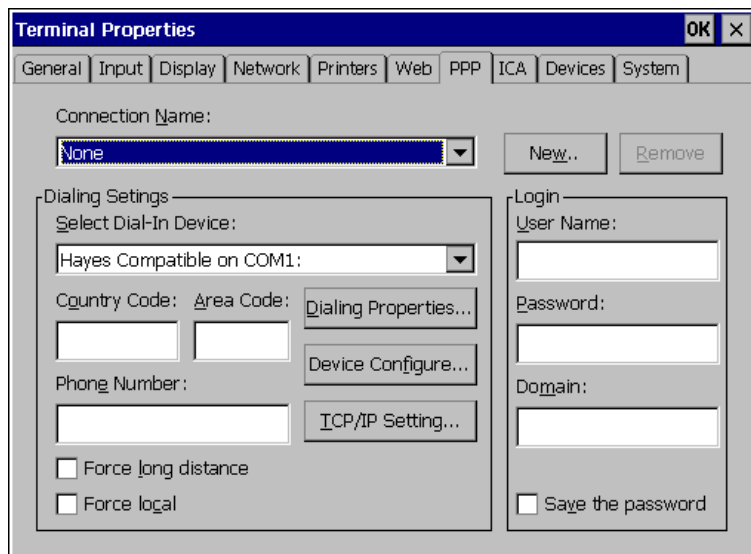
3. The network setting window is displayed.



Select [Use PPP connection or another network adapter].

Click [PPP] tab when finished.

4. The dial-up setting window is displayed.



NOTE

- Enter your information in the pertinent fields.

[Connection Name]Choose a connection name for a dial-up connection. ([None] indicates no connection name chosen.)

[New...]
Click the button to create a new dial-up connection name.

“Create New Dial-Up Connection” dialog box is displayed.

Enter the name and click [OK].

[Remove]Delete the connection name displayed currently.

[Dialing Settings]

[Select Dial-In Device].....Choose a modem connecting device type.

[Country Code:], [Area Code:], [Phone Number]

.....Enter a country code, an area code, and a phone number for the connection name.

[Force long distance].....Click here to use the country code, area code, and the phone number when connecting to the connection name.

[Force local].....Click here to use only the phone number when connecting to the connection name. (In case the area code of the connection name is different from the present area code.)

[Dialing Properties...]

.....Click the button to set information of the sender.



[When dialing from:]Choose the sender’s location.

[New...].....Click this to add a new sender’s location.
 “Create New Location” dialog box is displayed.
 Enter a new sender’s location and click [OK].

[Remove]Remove the current sender’s location.

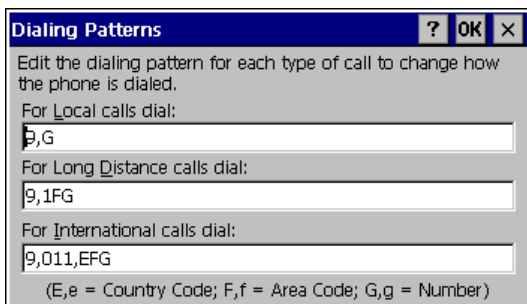
[Local Settings are...]

[The local area code is:], [The local country code is:]
Enter the area code and the country code of the
 sender’s location.

[Dial using:]Choose your using dial from;
 [Tone] / [Pulse]

[Disable call waiting by dialing:]
Click the check box and enter the number to disable
 call waiting by dialing.

[Dialing Patterns...].....Click the button and use this group box to set your
 modem’s dialing patterns.



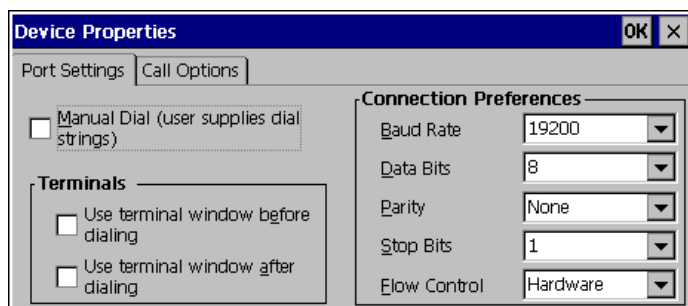
Click [OK] when finished.

Click [OK] of the [Dialing Properties] when finished.

“Terminal Properties” is displayed.

[Device Configure...]

..... Click the button the detailed settings of the modem.
(Please refer to the instruction manual of a modem for settings of the modem.)



[Port Settings] tab

[Manual Dial (user supplies dial strings)]

..... Click this box to set up for manual dialing.

[Terminals]

[Use terminal window before / after Dialing]

..... Click this box to record terminal window information before or after dialing.

[Connection Preferences]

[Baud Rate]..... Set data transmission rate from 110 to 115,200 bps.

[Data Bits]..... Set data bits.

[Parity]..... Set enabling to check the data's transmission.

[Stop Bits] Set length of the Stop Bits.

[Flow Control]..... Set Flow Control.

[Call Option] tab

[Cancel the call if not connected within]

..... Click the box and set the intervals to the right box before canceling the connection in case of connection failure.

[Wait for dial tone before dialing]

..... Click to dial after dial tone.

[Wait for credit card tone]

..... Click the box and set the intervals before canceling the connection in use of a credit card for dialing.

[Extra Settings (Special modem commands may be inserted into the dial strings)]

..... Enter a special modem command if required.

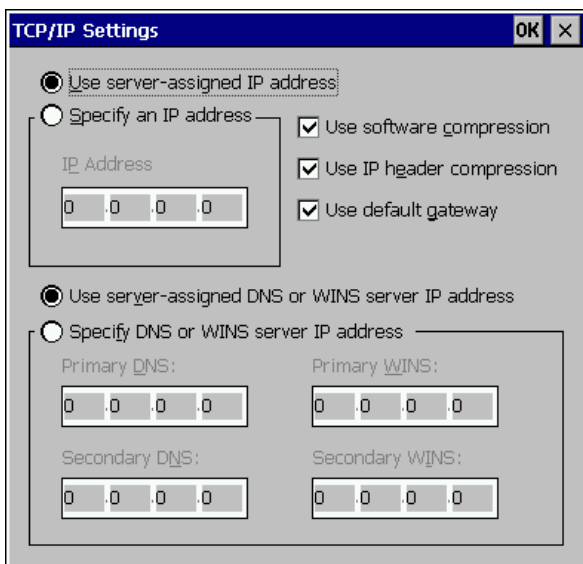
Click [OK] on [Device Properties] when finished. "Terminal Properties" will be displayed.

NOTE

- When changing settings in the [Device Properties], click the [Call Option] tab before clicking [OK] to close the window.

[TCP/IP Settings...]

Click the button to set the TCP/IP settings of the WTS.



[Use server-assigned IP address]

.....Click the box to use a server-assigned IP address.

[Specify an IP address]Enter a provided IP address.

[Use server-assigned DNS or WINS server IP address]

.....Click the box to use a server-assigned DNS or WINS server IP address.

[Specify DNS or WINS server IP address]

.....Enter an DNS or WINS server IP address provided.

[Primary DNS], [Secondary DNS]
.....Enter IP address of the primary DNS and IP address of the secondary DNS.

[Primary WINS], [Secondary WINS]
.....Enter IP address of the primary WINS and IP address of the secondary WINS.

[Use software compression]
.....Click to use software compression.

[Use IP headers compression]
.....Click to IP header compression.

[Use default gateway].....Click to use the default Gateway.

Click [OK] in the [TCP/IP Settings] when finished.

“Terminal Properties” is displayed.

[User's Name], [Password], [Domain]
.....Enter your information in the pertinent fields. If you do not know the information, contact your system administrator.

[Save the password]Click to save the password.

Click [OK] in the “Terminal Properties” when finished.

The “Terminal Properties” saves the settings and close.

This completes the dial-up connection settings.

A small window will be displayed on the right bottom of the window if the settings are successfully installed.



4. ADDING & CHANGING A CONNECTION NAME

This chapter shows how to add, delete, and modify connection names to a WTS. All the settings are managed in the “Terminal Connection Manager”.

4-1. Adding a Connection Name

These are settings for the Server connection.

Each protocol has different settings. Please install the appropriate settings.

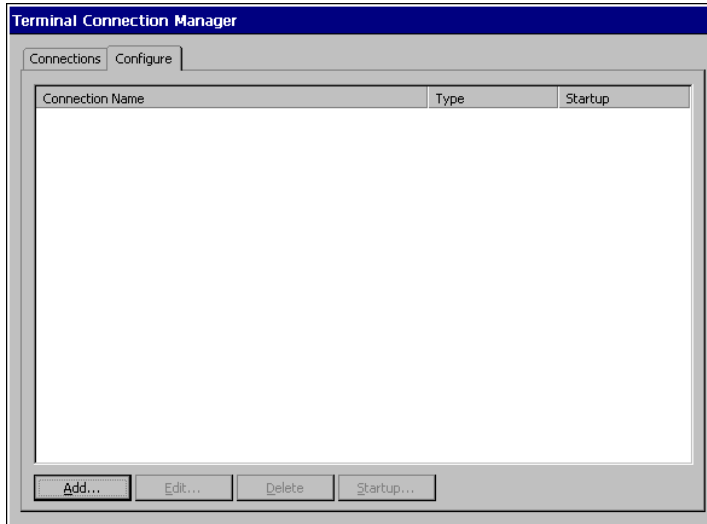
- In use of the Microsoft Remote Desktop Client (RDP) page 35
- In use of the Citrix ICA Client (ICA) page 40

NOTE

- Please install Citrix MetaFrame server into the Server when using the ICA protocol.

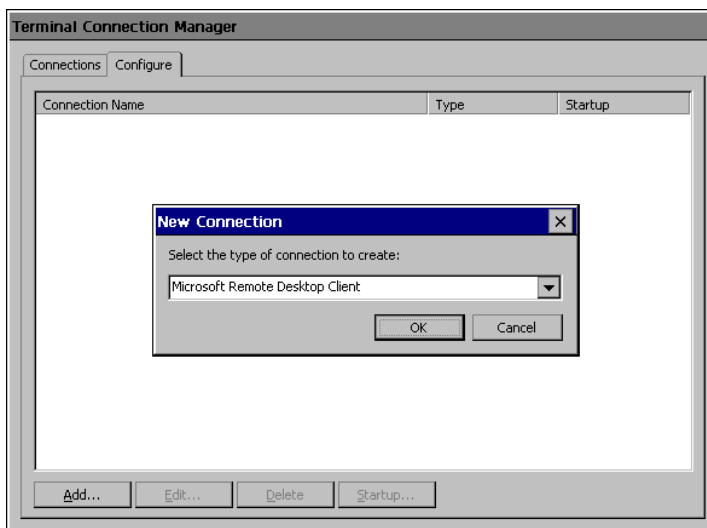
In Use of RDP Protocol

1. Display [Terminal Connection Manager].



Click the [Configure] tab and [Add...] to set the connection information of the WTS.

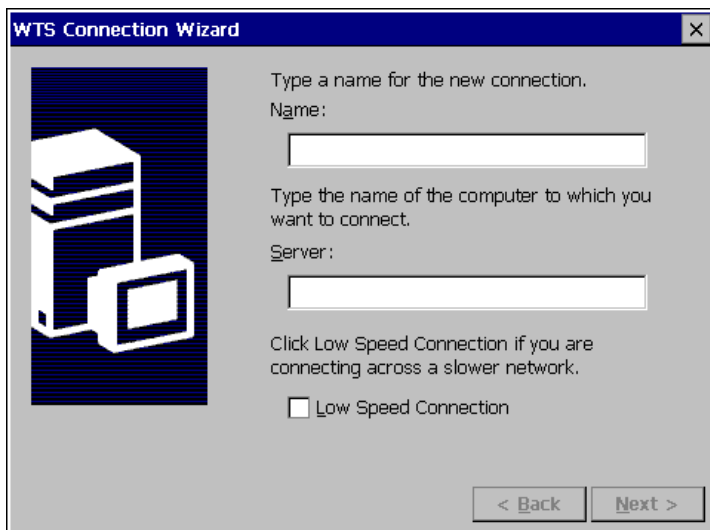
2. Protocol selection dialog box is displayed.



Select the “Microsoft Remote Desktop Client” (RDP)

Click [OK] when finished.

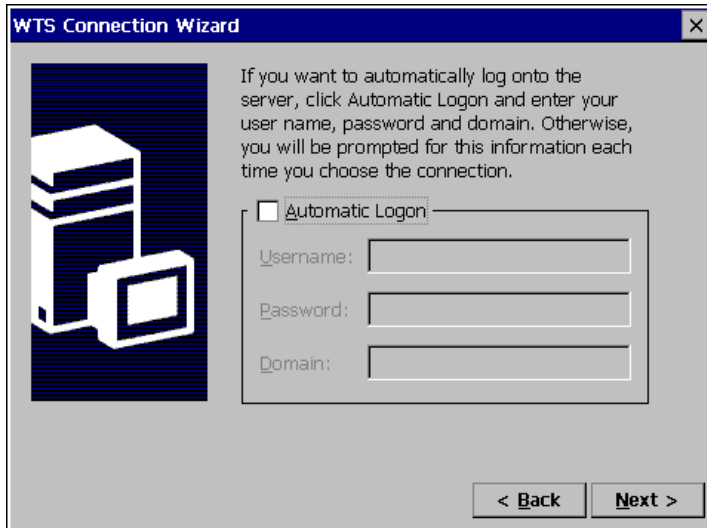
3. “WTS Connection Wizard” is displayed.



- [Name].....Type the connection name to the Server. Name the connection to differentiate the Server from others.
- [Server]Type the IP address or the name of the Server, or WINS setting is necessary when the name is typed.
- [Low Speed Connection].....Click the check box when making a low speed connection. Enable this function when connecting through a Remote Access Service using a modem that takes time to receive data from the Server.

Click [Next>] when finished.

4. Automatic Logon setting page is displayed.



Type the name, the password, and the domain name of the WTS beforehand to enable an Automatic Logon to the WTS after connecting.

NOTE

- If an Automatic Logon is not needed, click [Next>].

Click the check box of the [Automatic Logon] to enable the item.

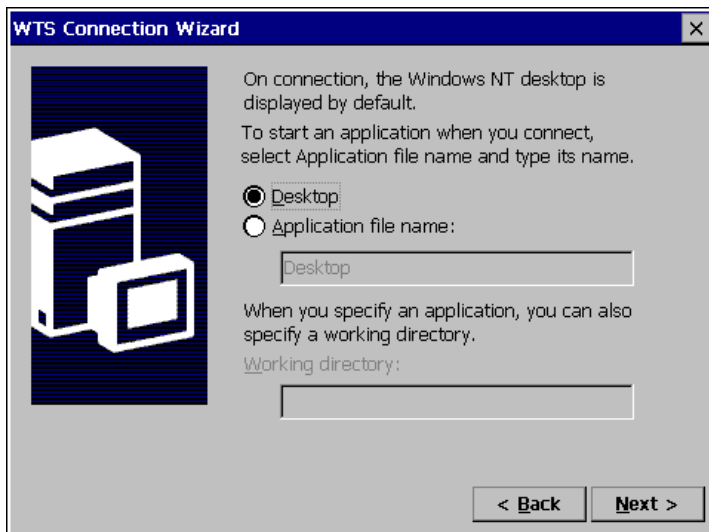
[Username]..... Type the name to connect the WTS.

[Password] Type the password for the user name.

[Domain] Type the domain name.

Click [Next>] when finished.

5. Specifying an application to run after connecting to a WTS is displayed.



Select whether to display the Windows desktop screen or start up an application.
[D]esktop]Select this to start the Windows desktop screen when you connect.
[A]pplication file name:]Select this to start an application when you connect.
[W]orking directory:]Input the name of the application and the working directory if necessary.

NOTE

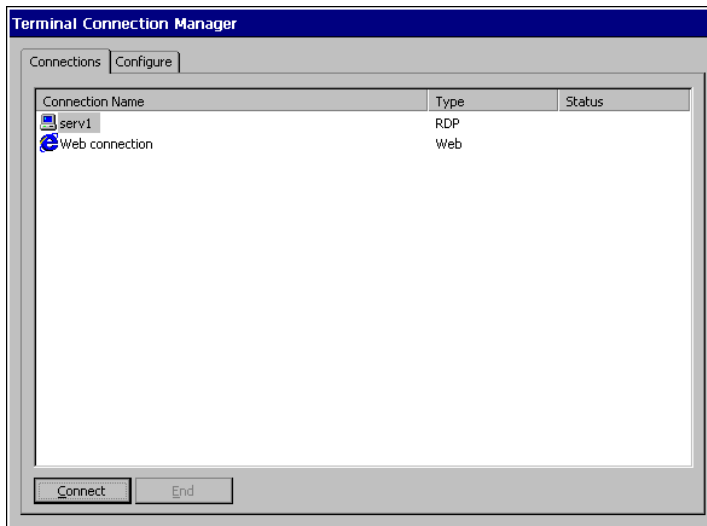
- When the [A]pplication file name:] and the [W]orking Directory] are named, only the specified application will be started after logging on. In this case, closing the application logs off and disconnects from the WTS.

Click [N]ext>] when finished.

6. The last page of the “WTS Connection Wizard” is displayed on the screen.



Click [Finish] to return to the “Terminal Connection Manager” dialog box. The registered connection name is displayed in the “Terminal Connection Manager” dialog box.



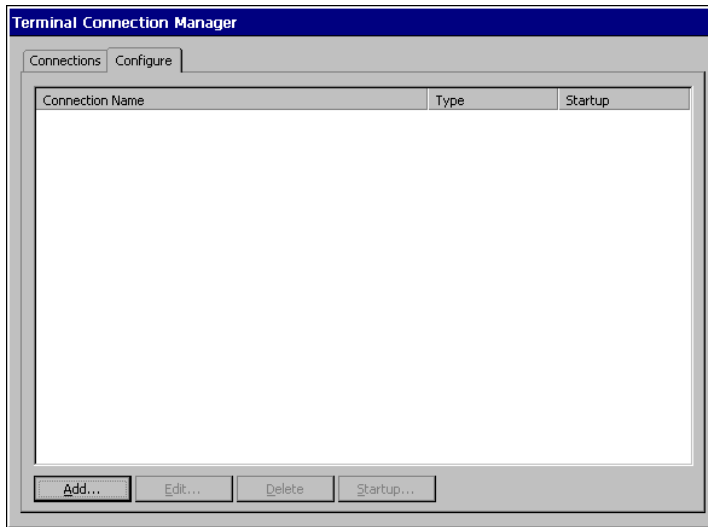
This completes the setup of the eClient for connection to a WTS with the RDP protocol.

NOTE

- Please repeat step 1 to 6 to entry more than two kinds of connections.

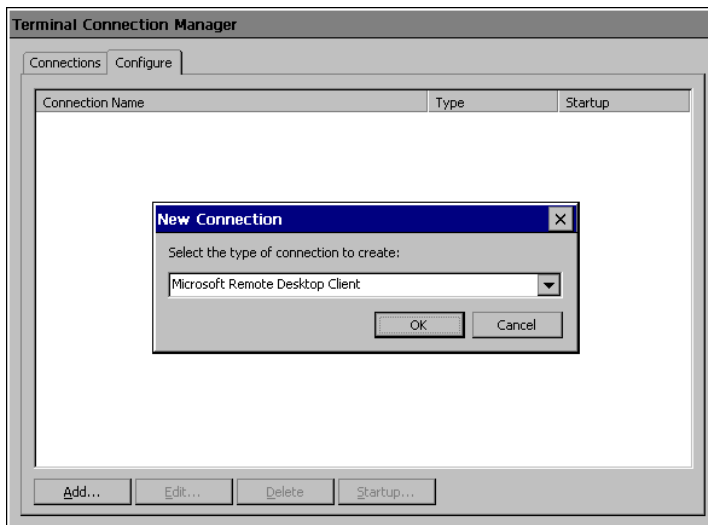
In Use of the ICA protocol

1. Click the [Configure] tab.



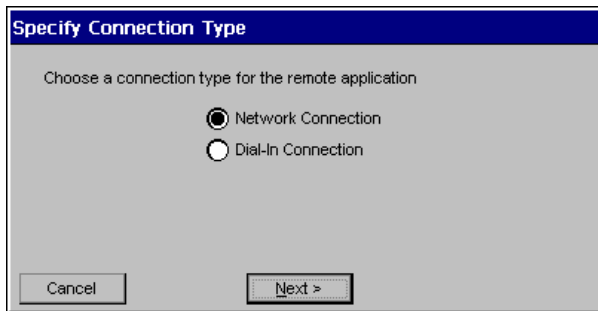
Click [Add...].

2. "New Connection" dialog box is displayed on the screen.



Select "Citrix ICA Client" (ICA).
Click [OK] when finished.

3. “Specify Connection Type” dialog box is displayed.



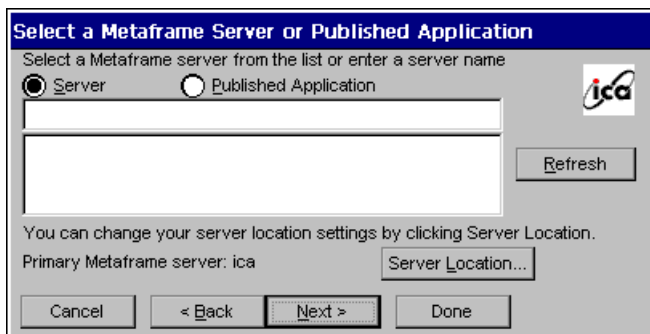
[Network Connection].....Select for network connection.
[Dial-In Connection].....Select for dial-in connection.

Click [Next>] when finished.

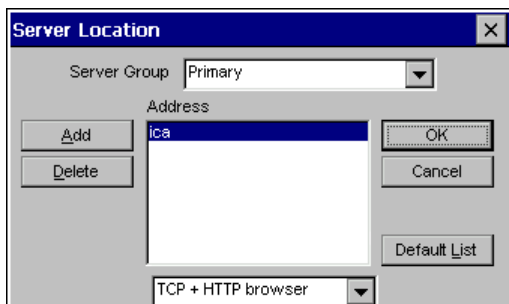
Go to step 4 when selecting [Network Connection].

Go to step 5 when selecting [Dial-In Connection].

4. Citrix Server or published application selection page is displayed.



- 1) Select [Server] (WTS) or [Published Application].
- 2) Click [Server Location...].



- [Server Group].....Select the WTS Group to connect. (A WTS Group consists of [Primary], [Backup 1], and [Backup 2]. The WTS will be searched in order of [Primary], [Backup 1], and [Backup 2].
- [Add]Add another Server address. Type the Server Name or IP address. (The typed Server Name or IP address will be shown in the [Address] list.
- [Delete]Delete the selected WTS from the [Address] list.
- [Default List]Revert the state of the [Address] list to the saved one.
- [Address]The added WTS IP address appears.

Click the drop-down list box below [Address]. Select the appropriate WTS protocol from the list.

- [TCP browser]Citrix MetaFrame uses UDP protocol to search for the WTS. Select this when using a UDP protocol.
- [TCP + HTTP browser]...Select this when not using a UDP because of the firewall in your network environment.
- [SSL + HTTPS browser]This is not available with eClient.

Click [OK] to return to the previous page and save the adjustments.

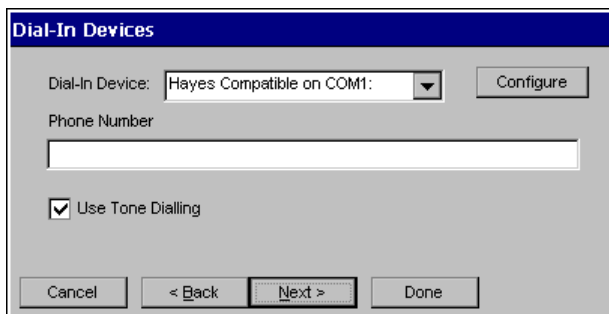
- 3) Click [Refresh] to refresh the list to the newest information.
- 4) Select a WTS or a published application from the list.

NOTE

- Published applications are specific application set by a system administrator. When connected, you are presented with the application itself.

Click [Next>].

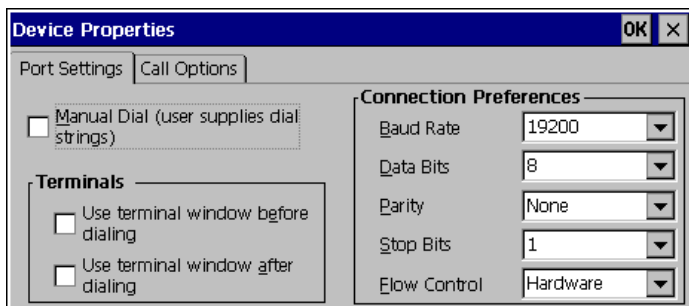
5. “Dial-In Devices” dialog box is displayed.



NOTE

- This setting is available in the 531L/531LT-GR only.
- A dial-in connection is not available during a dial-up connection. Disconnect the dial-up connection before making dial-in connection.

- [Dial-In Device:].....Select the device name connected to the modem.
 [Hayes Compatible on COM1] is available for the eClient.
- [Phone Number]Enter a country code, an area code, and a phone number for the connection.
- [Use Tone Dialling]Click to use tone dialling.
- [Configure]Click the button the detailed settings of the modem.
 (Please refer to the instruction manual of the modem for details.)



- [Port Settings] tab
- [Manual Dial (user supplies dial strings)]
Click this box to set up for manual dialing.
- [Terminals]
- [Use terminal window before dialing]
Click this box to record terminal window information before dialing.
- [Use terminal window after dialing]
Click this box to record terminal window information after dialing.

[Connection Preference]

[Baud Rate].....Set the data transmission rate from 110 to 115,200.

[Data Bits].....Set the data bits.

[Parity].....Set to check the data's appropriate transmission.

[Stop Bits]Set the length of the Stop Bits.

[Flow Control].....Set Flow Control.

[Call Option] tab

[Cancel the call if not connected within]

.....Click the box and type the interval to the right box before canceling the connection in case of connection failure.

[Wait for dial tone before dialing]

.....Click to dial after dial tone.

[Wait for credit card tone]

.....Click to set the intervals before canceling the connection using a credit card.

[Extra Settings (Special modem commands may be inserted into the dial strings)]

.....Enter a special modem command if needed.

Click [OK] on [Device Properties] when finished. The dialog box saves the settings and closes.

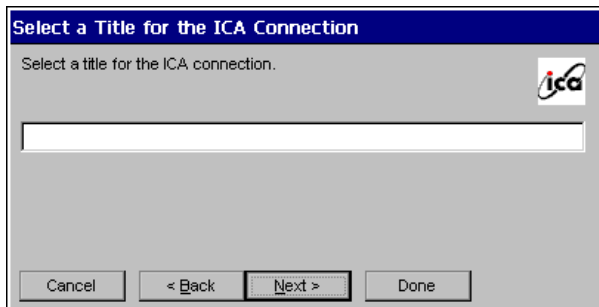
- Click the [Close] button to cancel the settings.

NOTE

- When changing settings in the [Device Properties], click the [Call Option] tab before clicking [OK] to close the window.

Click [Next>].

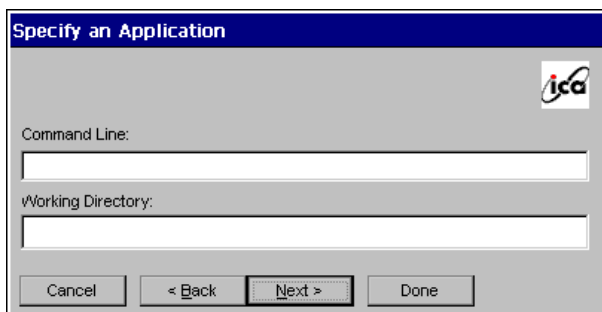
6. A title for the ICA connection page is displayed.



Type a connection name of the WTS.

Click [Next].

7. An application selection page is displayed.



Specify the command line and the working directory of an application to operate.

NOTE

- Leave these fields blank and click [Next>] to run a Windows desktop.

[Command Line:].....Type the application name and the path.

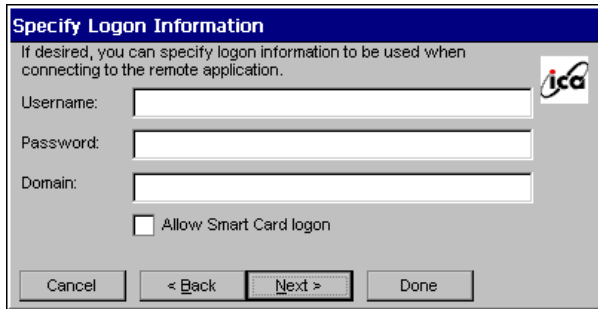
[Working Directory:]Type the working directory for the application.

NOTE

- When the [Command Line] and the [Working Directory] are named, only the specified application will be started after logging on. In this case, closing the application logs off from the WTS.

Click [Next>] when finished.

8. Automatic logon settings page is displayed.



Type the name, the password, and the domain name of the WTS beforehand to enable an Automatic logon to the WTS after connecting.

NOTE

- If an Automatic Logon is not needed, click [Next.]

[User Name:].....Type the name to automatically connect the WTS.

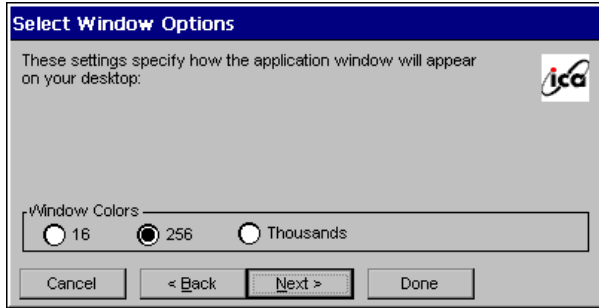
[Password:]Type the password for the user name.

[Domain:]Type the domain name.

[Allow Smart Card logon]... This is not available with eClient.

Click [Next>] when finished.

9. Colors selection page is displayed.



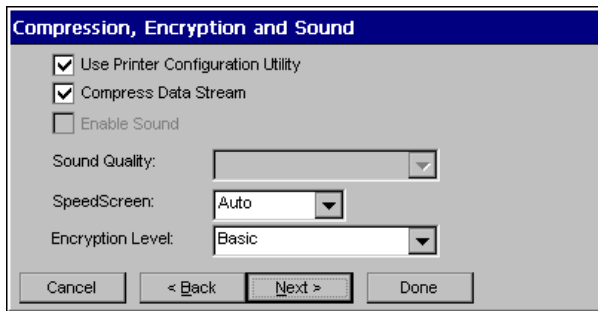
Set the colors of the WTS' screen.

NOTE

- Thousands can be selected only when the color setting of the eClient is 65536 colors.

Click [Next>] when finished.

10. Compression and encryption, and sound settings page is displayed.



[Use Printer Configuration Utility]

..... Click the check box to install the printer at the [ICA Client Printer Configurations].

[Compress Data Stream] Click the check box to reduce the amount of data transferred between the WTS and the eClient, which can increase performance. (If you have sufficient bandwidth, leave compression off to conserve processing power on the WTS.)

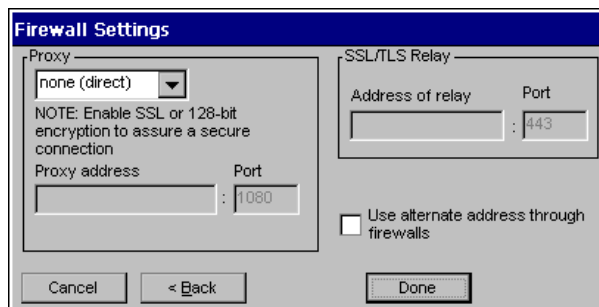
[SpeedScreen:] Select the speed at which the keyboard and mouse perform on the screen.

Select [On] when connecting to the WTS with a dial-up connection. Select [Off] when connecting to the WTS with a LAN connection. Select [Auto] to automatically switch the speed depending on the network environment.

[Encryption Level:] Encryption level can be selected from RC5 (128 bit - Login Only), basic, RC 5 (40 bit), RC5 (56 bit), RC5 (128 bit). The level becomes higher as the bit gains. RC5 (128 bit - Login Only) indicates the 128 bit level security available only at logon.

Click [Next>] when finished.

11. Firewall settings page is displayed.



NOTE

- These settings are effective when connecting to the WTS through internet.
- If no change is made, the settings under the [Firewall settings] of [Global ICA Client Settings] will be applied (see page 78 for details).

Set the connection to the WTS through the SOCKS proxy server when the SOCKS proxy server is working to limit the access to the WTS.

[Proxy]

Click the drop-down list box, and select [SOCKS] from the list.

(The [Secure (HTTPS)] setting is not available with eClient.)

[Address of SOCKS proxy to use] / [Port]

.....Type the IP address of the SOCKS proxy server and the port number of the proxy server.

[Use alternate address through firewalls]

.....Click the check box to connect to the WTS through the Firewall.

[SSL/TLS Relay]

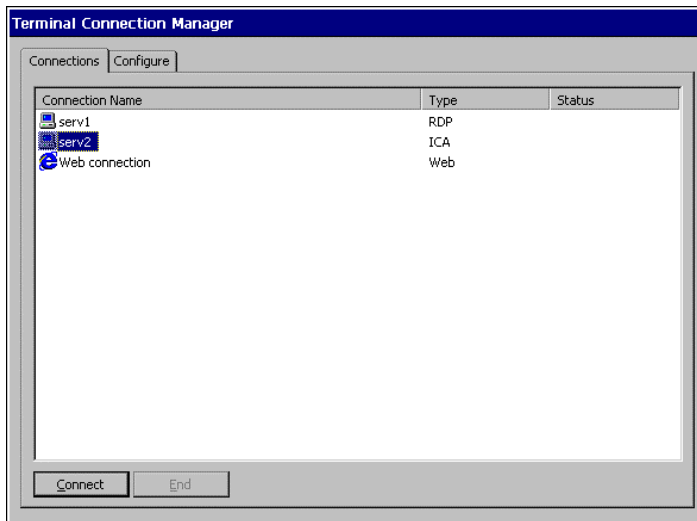
[Address of SSL relay to use] / [Port]

.....These are not available with eClient.

Click [Finish] when finished.

[Terminal Connection Manager] is displayed.

The registered connection name is displayed in the “Terminal Connection Manager” dialog box.



This completes the setup of the eClient for connection to a Server with the ICA protocol.

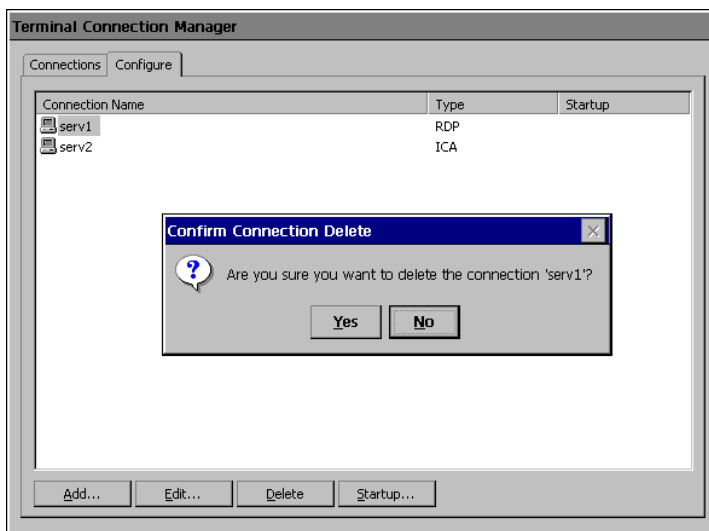
NOTE

- Please repeat the step 1 to 11 when you adding another connection name.

4-2. Deleting a Connection

This function deletes an existing Connection Name.

1. Display the “Terminal Connection Manager” dialog box.
2. Click the [Configure] Tab.
3. Select the Connection Name you want to delete.
4. Click [Delete].
5. “Confirm Connection Delete” dialog box is displayed.

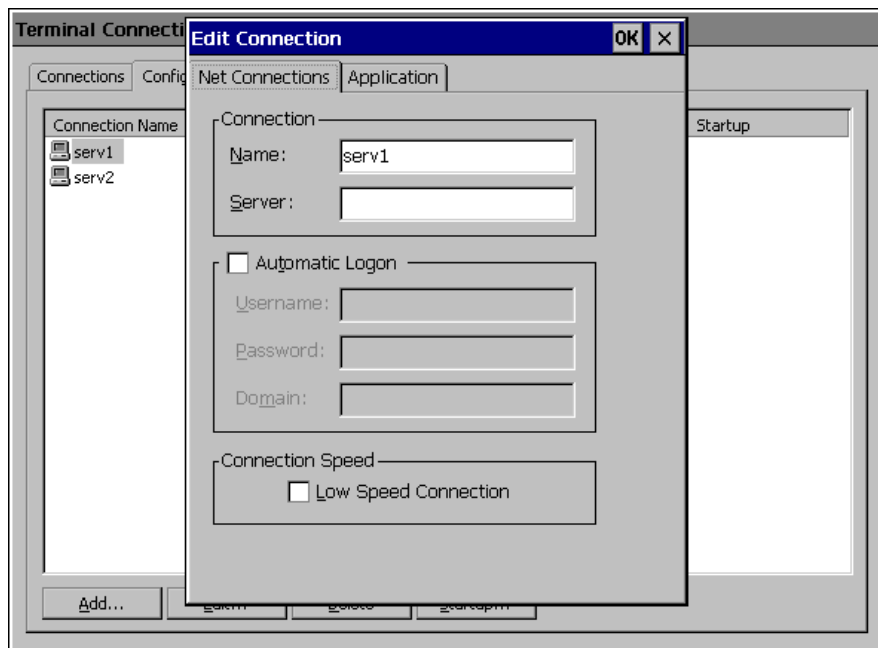


Click [Y]es to delete the information of the selected WTS.

4-3. Editing a Connection

This function modifies attributes of the WTS connections.

1. Display the “Terminal Connection Manager” dialog box.
2. Click the [Configure] Tab.
3. Select the connection you want to modify.
4. Click [Edit...].
5. [Edit Connection] dialog box or [Edit Connection Details] is displayed.
 - For RDP Connection



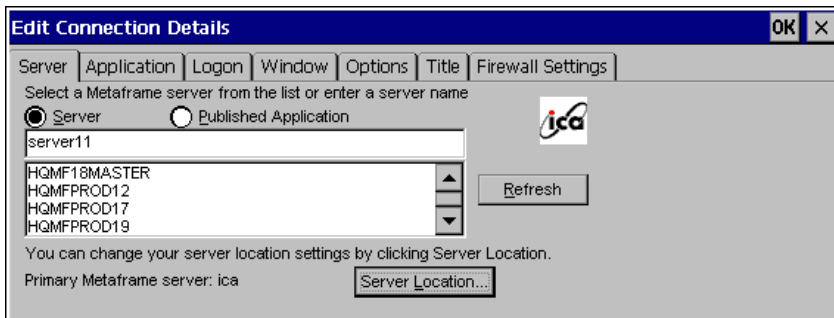
(Please see pages 35 to 39 for each setting.)

[Net Connections] tab..... Change connection settings to a WTS.

[Application] tab..... Change a description of an application on a startup.

Click [OK] to enable the settings.

- For ICA Connection



(Please see to pages 40 to 50 for each setting.)

[Server/Dial-In] tab Either Server or Dial-In tab is displayed depending on the connection type.

[Server] Tab (for LAN connection)

To change the WTS / the public application to use

[Dial-In] Tab (for Dial-In connection)

To change settings of the Dial-In connection (531L/531LT-GR only)

[Application] tab..... To change a description of an application to run

[Logon] tab To set/cancel Automatic Logon

[Windows] tab To set the colors of the WTS screen

[Options] tab To set/cancel the printer after connecting the WTS, compression of data, the speed at which the keyboard and mouse perform on the screen, and encryption level setting.

[Title] tab To change the connection name

[Firewall Settings] tab To change the settings on the Firewall and the proxy WTS

If no change is made in this settings, the settings under the [Firewall settings] of “Global ICA Client Settings” will be applied (see page 78 for details).

Click [OK] to enable the settings.

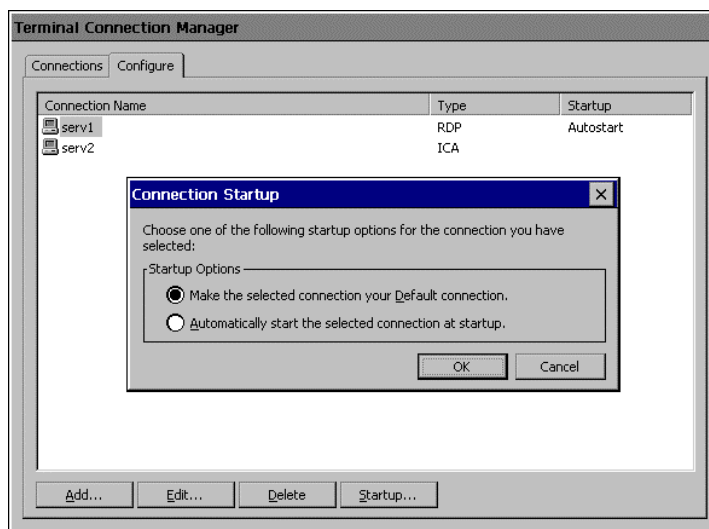
NOTE

- When changing settings in the Dial-In connection, click and show the [Call Option] tab of [Device Properties] of the [Dial-In] tab before clicking [OK] to close the window.

4-4. Setting an Autostart Connection

This function configures a connection to start automatically each time the eClient is turned on. (This function is available for a LAN connection.)

1. Display the “Terminal Connection Manager” dialog box.
2. Click the [Configure] tab.
3. Select the desired Connection Name for Autostart Connection.
4. Click [Startup...]
5. “Connection Startup” dialog box is displayed.



Select [A]utomatically start the selected connection at startup.]

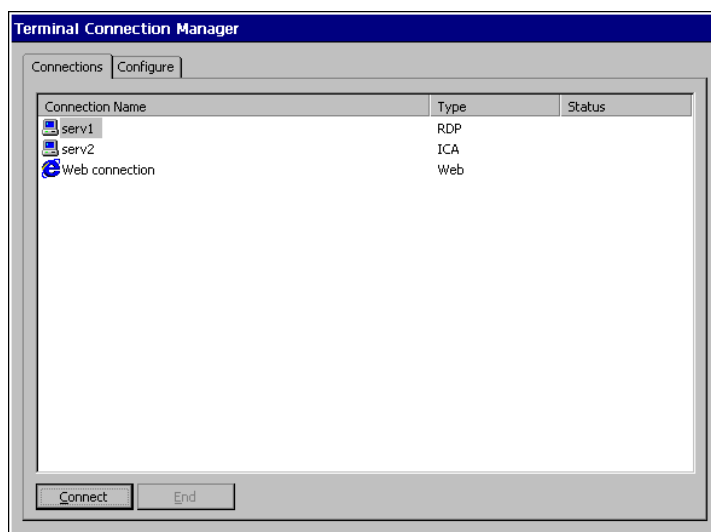
Click [OK] to save the setting. The setting is effective from the next startup.

5. LOGON & LOGOFF

This chapter shows how to log on to and log off from a WTS.

5-1. Logon to a WTS

1. Turn on the eClient.
2. “Terminal Connection Manager” dialog box is displayed.



Please follow the instruction depending on the network environment of the eClient.

LAN connection

Go to step 3.

Modem connection (531L/531LT-GR only)

- * Dial-Up connection to the RAS Server

Click the active button of a small window on the right bottom of the screen.



A dial-up connection is made by clicking the button. Check the clock's running, and go onto step 3.

- * Dial-In connection to the Citrix MetaFrame Server

Go to step 3.

NOTE

- A dial-in connection is not available during a dial-up connection. Disconnect the dial-up connection before making dial-in connection.

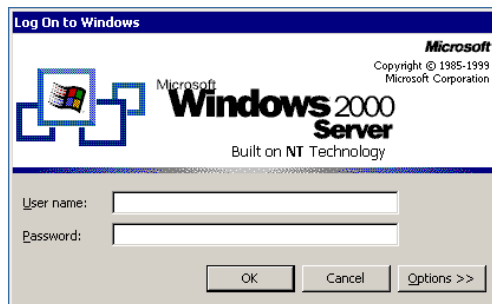
3. Click the [Connections] tab.

Select the desired [Connection Name] and click [Connect] (or simply double click the connection name).

NOTE

- To connect to the default connection WTS set in the “Terminal Connection Manager” dialog box, press [Ctrl] + [Alt] + [Home] keys. (See page 55 on a default connection server setting.)

4. The eClient connects to the WTS, and the “Log On to Windows” dialog box is displayed.



Type your [User name] and [Password], and click [OK] to log on to the WTS. After logon, the eClient allows you to use Microsoft Windows applications running on the WTS.

NOTE

- If an Automatic Logon connection has been defined, this menu will not be displayed upon connection. (For details, please refer to [Automatic Logon] on page 37, 47.)

Multi Session

You can log on to the WTS with the several connection names, and switch the active sessions.

• Logon

1. Log on with a Connection Name, as following the previous steps.

2. Press [Ctrl] + [Alt] + [End] keys after logon.

3. “Terminal Connection Manager” is displayed.

Select another Connection Name to log on to, and click [Connect]. (Or double click the connection name.)

4. “Log On to Windows” dialog box is displayed after connecting to the WTS.

Type your [User name] and [Password], and click [OK] to log on to the WTS. (Repeat the step 2 to 4 to log on to another connection name.)

• Switching the Active Session of the WTS

Press [Ctrl] + [Alt] + [UP ARROW] key / [DOWN ARROW] key to switch the active session.

NOTE

- The multi session is not available on a dial-in connection. (531L/531LT-GR only)

5-2. Logoff from the WTS

If your eClient starts its operation with a desktop

1. Log off from the WTS.

- (1) Close all applications.
- (2) Select [Start] on the taskbar.
- (3) Microsoft Windows NT Server 4.0 Terminal Server Edition:
Select [Logoff].
Microsoft Windows 2000 Server / Advanced Server / Datacenter Server:
Select [Shut Down...] and select [Logoff] of the [Shut Down Windows] dialog box.
- (4) Click [OK] on the Logoff Window. The session ends and automatically logs off from the WTS. The “Terminal Connection Manager” dialog box is displayed.

If a dial-up connection is running, click the active button of the window on the right of the screen. Clicking the button Disconnects the dial-up connection.

(531/531LT-GR only)



2. Shut down the eClient.

If your eClient starts its operation with an application

1. Log off from the WTS.

Close applications to log off from the WTS.

“Terminal Connection Manager” is displayed.

If a dial-up connection is running, click the active button of the window on the right bottom of the screen. Clicking the button Disconnects the dial-up connection.

(531L/531LT-GR only)

2. Shut down the eClient.

NOTE

- It is possible to Disconnect from a WTS without closing applications in use (or without logging off). (The last view of the application is displayed when the next connection to the WTS is made.)

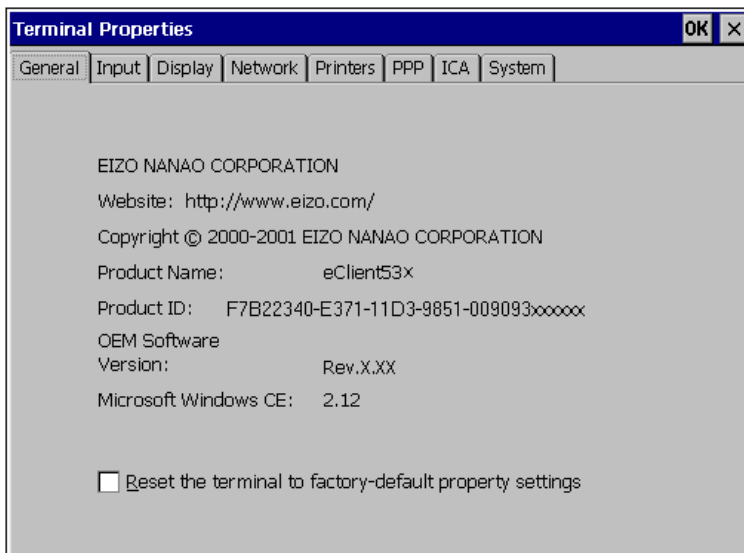
6. USING THE TERMINAL PROPERTIES

This chapter presents how to modify all settings of the eClient using the “Terminal Properties”.

To display the “Terminal Properties” during logging on, press F2 in the “Terminal Connection Manager” dialog box. (Press Ctrl + Alt + End to display the “Terminal Connection Manager”.)

6-1. General Information & Reset to Default

Click [General] tab to confirm general settings and to reset the eClient to factory-default settings.



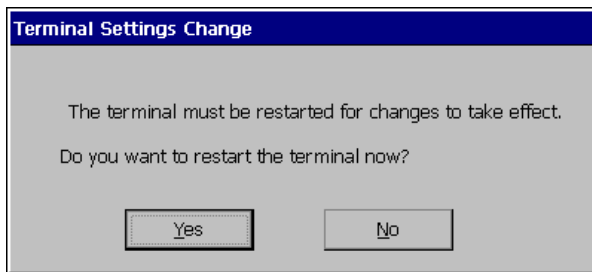
Product Information

[Product Name]Name of this model
 [Product ID].....Product ID Number of the unit
 [OEM Software Version]Revision of the Microsoft Windows CE
 [Microsoft Windows CE]....Version of the Microsoft Windows CE

Resetting to Default

1. Click [Reset the terminal to factory-default property settings] check box.
2. The “System Settings Change” dialog box is displayed.
Click [Yes].
3. “Terminal Properties” is displayed.
Click [OK].

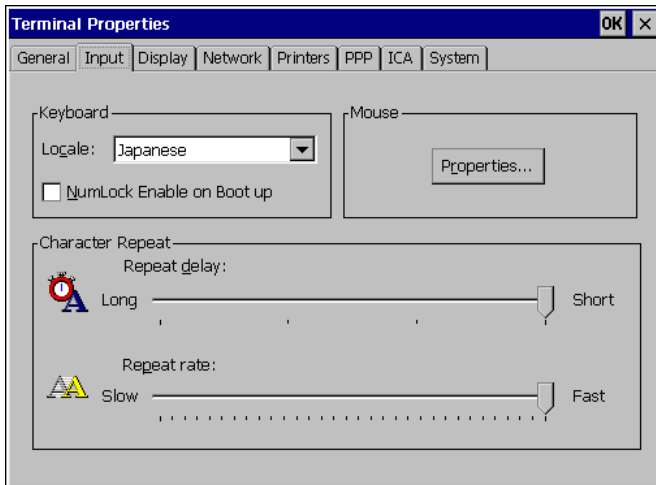
“Terminal Setting Change” dialog box is displayed.



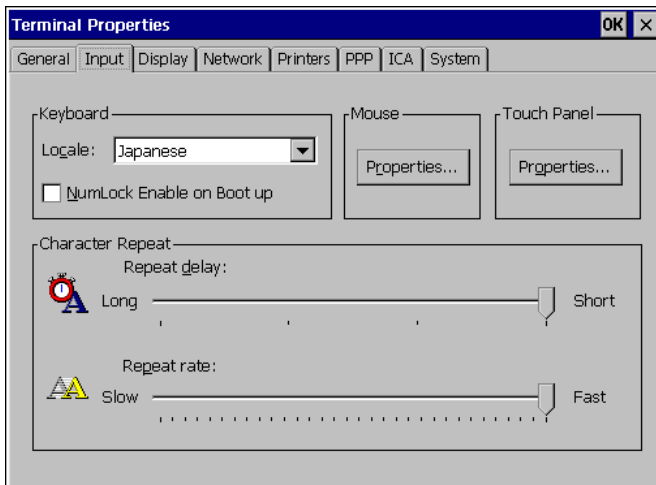
Click [Yes] to restart the terminal. “WBT Setup Wizard” will be displayed after restarting the terminal.

6-2. Input Devices Settings

Click the [Input] tab to modify keyboard, NumLock Key, mouse characteristics, and touch panel calibration.



(530L/531L)



(531LT-GR)

Keyboard Settings

[Keyboard]

[Locale]Selects a keyboard language.

[NumLock Enable on Boot UP]

.....enables/cancel NumLock function on start-up.

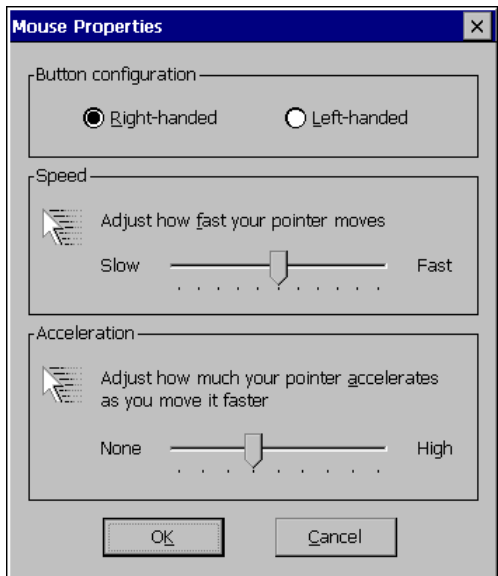
[Character Repeat]

[Repeat delay]Allows adjusting the amount of time that elapses before begins repeating when you hold down a key.

[Repeat rate]Allows adjusting the speed at which a character repeats when hold down a key.

Mouse Settings

Click [Properties...] to display the [Mouse Properties].



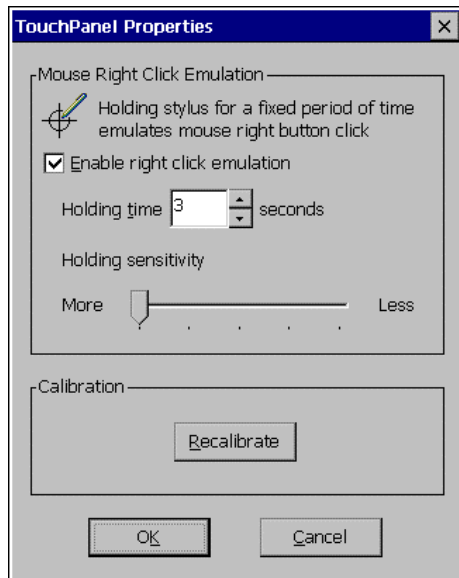
[Button Configuration]Assigns the primary mouse button and the secondary mouse button.

[Speed]Adjusts the speed at which the pointer moves on your screen.

[Acceleration].....Adjusts the speed the mouse pointer accelerates as you move the mouse.

Touch Panel Properties (531LT-GR only)

Click [Properties...] to display the “Touch panel Properties”.



[Mouse Right Click Emulation]

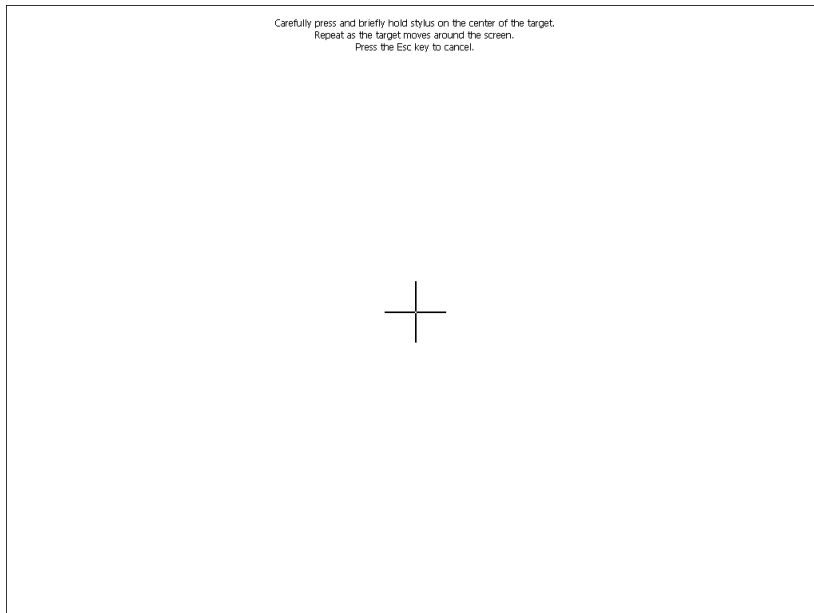
[Enable right click emulation]

.....Holding stylus for a fixed period of time emulates mouse right button click. Click the [Enable right click emulation] check box , set a holding time, and adjust holding sensitivity.

[Calibration]

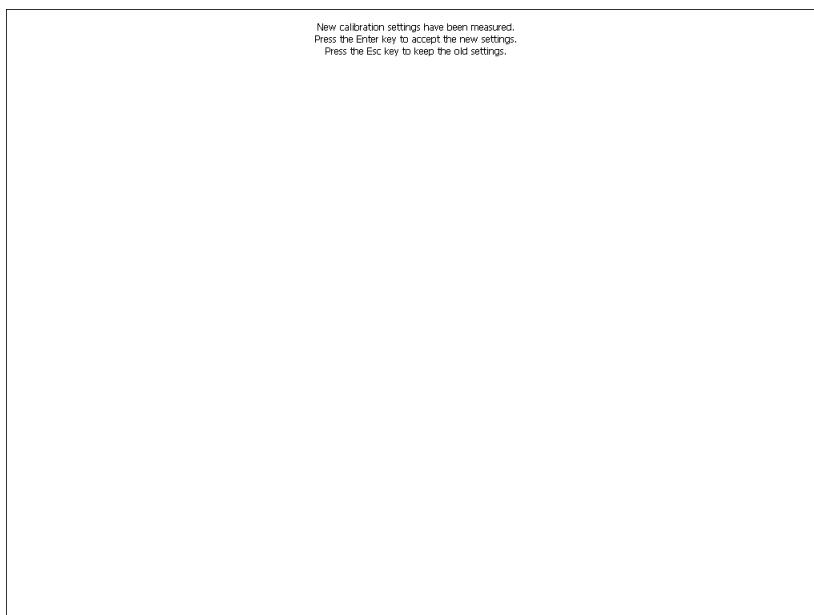
This enables to recalibrate the touch panel.

Click [Recalibrate] to show the “Touch Panel calibration”.



Five targets are displayed on the touch panel. Press the targets with a stylus or a fingertip to locate the center of the touch panel. If you accidentally touched the screen in the wrong spot during calibration, you will distort the touch panel calibration.

“Calibration measured” window is displayed when you finished.

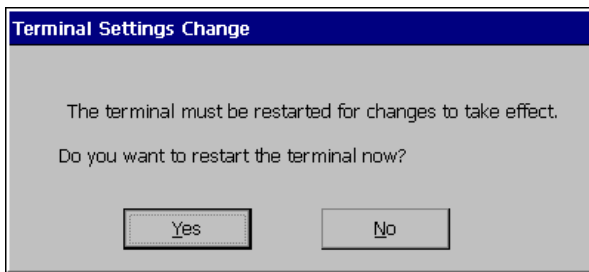


Click [Enter] key to accept the settings.

Click [OK] to return to the “Terminal Properties” and save the settings.

Click [OK] to close “Terminal Properties” and save the adjustments.

The “Terminal Settings change” dialog box will be displayed when the [Locale:], [Repeat delay:], and [Repeat rate:] are changed.



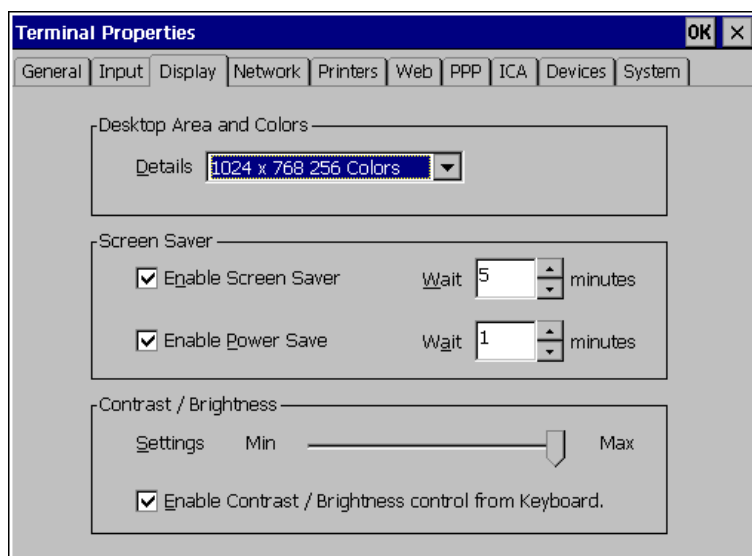
Click [Yes] and restart the eClient.

NOTE

- Changing the Double-click speed, and Double-click width and height
When you have difficulty with double-clicking on the touch panel with a stylus (or a fingertip):
[Double-click speed]
 - 1) Click Window's [Start] and select [Settings] - [Control Panel].
 - 2) Double-click [Mouse] and adjust the speed at [Double-click speed].[Double-click width and height]
 - 1) Click Window's [Start] and select [Run...].
 - 2) Type 'RegEdit.exe' on [Name] and click [OK].
 - 3) [Registry Editor] is displayed. Select [HKEY_CURRENT_USER] - [Control Panel] - [Mouse].
 - 4) Double-click [DoubleClickHeight] and [DoubleClickWidth] and change the settings on [Value Data]. (Height and width will be increase as the value increase.)
 - 5) Close [Registry Editor].
 - 6) Logoff from the Server and re-logout to confirm the settings are effective. (If you do not logout to the Server after changing the settings, the change will not be effective.)

6-3. Colors & Power Save Settings

Click the [Display] tab to modify display parameters such as colors, screen saver, and power save.



Resolution and Colors

[Desktop Area and Colors]

[Details]Adjusts the resolution and colors of the screen.

Screen Saver

[Screen Saver]

[Enable Screen Saver]Click the [Enable Screen Saver] check box and set an idle period from 1 to 60 minutes before Screen Saver starts in minutes. Once the Screen Saver starts, the backlight is turned off.

[Enable Power Save]Interacts with [Screen Saver] and shift the state of the monitor into the power save mode. (The power consumption is lower than 10 W in the power save mode.)

Click the [Enable Power save] check box and select an interval (from 0 to 60 minutes) between the time when the Screen Saver starts and when the unit shifts into [Power Saver].

Brightness

[Contrast/Brightness]

[Settings] Enables to adjust the brightness of the screen.

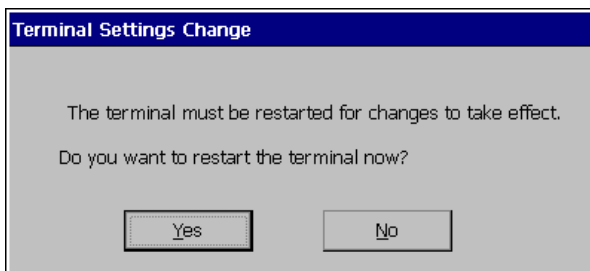
[Enable Contrast/Brightness control from Keyboard]

Enables to adjust the brightness/contrast from a Keyboard.

- [Alt] key and [+] key: The brightness of the screen increases.
- [Alt] key and [-] key: The brightness of the screen decreases.

Click [OK] to close “Terminal Properties” and save the adjustments.

The “Terminal Settings change” dialog box will be displayed to restart the terminal and activate the adjustments when the [Details], [Wait] period of [Screen Saver], or [Enable Contrast/Brightness control from Keyboard] of [Brightness/Contrast] is changed.



Click [Yes] to restart the unit.

NOTE

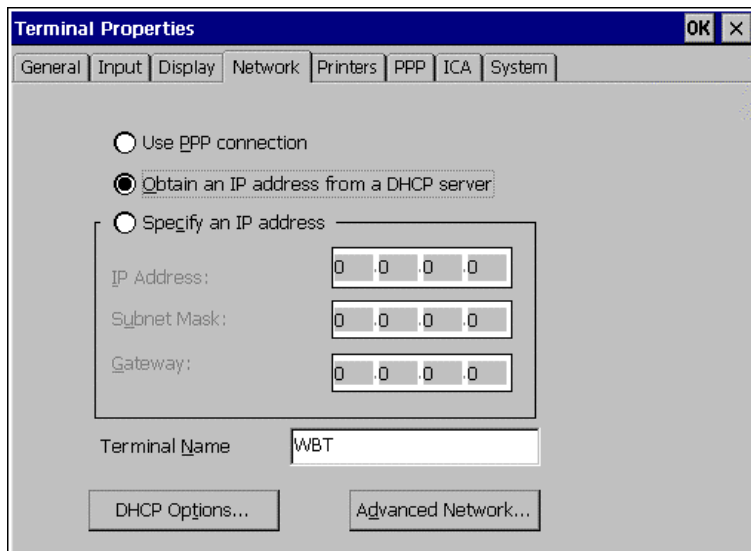
- Do your part to conserve energy, turn off the unit when you are finished using it. Complete energy use can only be accomplished by disconnecting the unit's power supply cord from the plug receptacle.

6-4. Network Settings

Click [Network] tab to set network information for the eClient.

NOTE

- All settings shown here are previously adjusted on the “WBT Setup Wizard”.
- Please set the properties depending on the eClient connection settings.



[Use PPP connection or another network adapter]
Click to use a modem connection to the WTS.
 (531L/531LT-GR only)

To connect to the WTS with a LAN network, set the following.

[Obtain an IP address from a DHCP server]
This allows the user to receive IP information from a
 DHCP service automatically. The DHCP service of a
 server must be in operation to receive the information.

[Specify an IP address.]If not using a DHCP service, please select this and
 enter the information shown below.

[IP address]Type the eClient IP address.

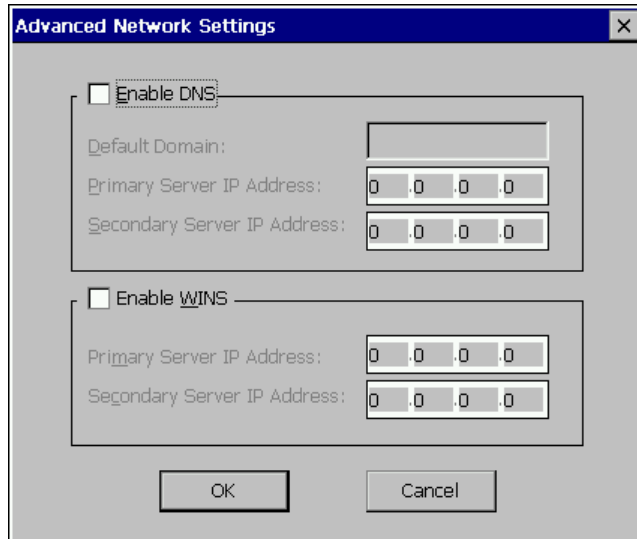
[Subnet Mask].....Type the subnet mask.

[Gateway]Type the Gateway IP address.

[Terminal Name]Type a name to recognize this unit from others on the
 network (only in use of the RDP protocol).

[DHCP Options...].....Click this to receive essential information about the eClient from the DHCP server every time the eClient is turned on. Refer to “Practical Setup” on page 87 for details.

[Advanced Network...]Allows setting for DNS/WINS service. A DNS/WINS server is required for the setting.

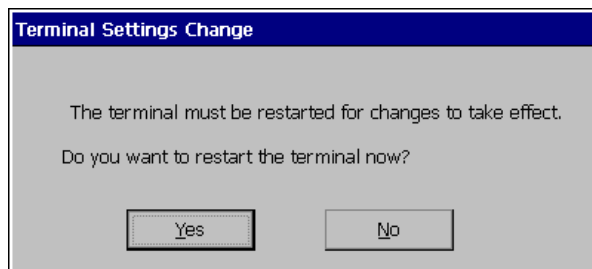


[Enable DNS].....Click the check box and type default domain name and IP address of the DNS server.

[Enable WINS]Click the check box and type IP address of the WINS server.

Click [OK] to finish and return to the “Terminal Properties” dialog box.

Click [OK] to show the [Terminal Settings Change] dialog box.



Click [Yes] to restart the eClient.

NOTE

- The [Terminal Settings Change] dialog box will not be displayed when [Terminal Name], [DHCP Options], and [Advanced Network...] are changed, though the unit needs to be restarted to set the adjustment effective.

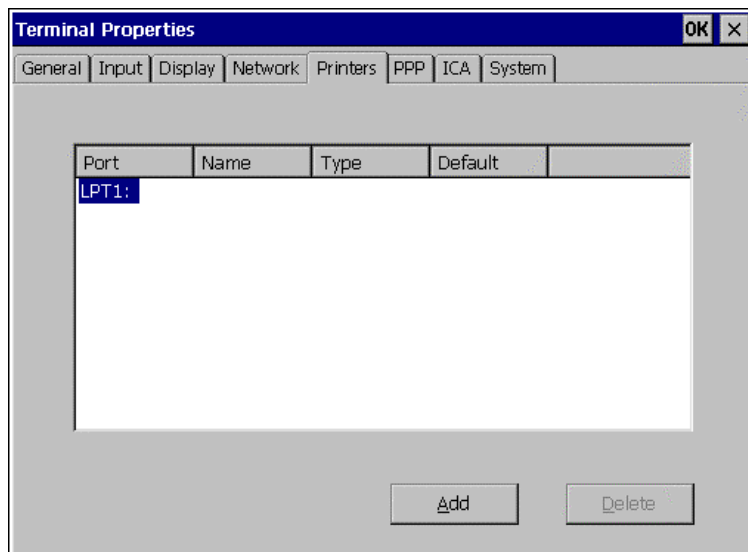
6-5. Printer Settings

Click [Printers] tab.

You can add, delete and change the settings of the printer in this section.

NOTE

- The eClient supports a LPT1 port.
- Use a RDP protocol to set the printer's adjustment. If you are using the ICA protocol, please refer to the instruction manual of the Citrix MetaFrame.



Adding another printer settings

This enables to add a printer when no printer is connected to the LPT1 port.

1. Select LPT1 and click [Add].

2. “Printer Properties” dialog box is displayed.

[Frriendly Name].....Name the printer or use the indicated name. (Some programs do not support server and printer name combinations of more than 31 characters.)

- When your printer is listed

[Manufactures] / [Printers]

.....Select the manufacturer and model of your printer.

- When your printer is not listed

[User Defined].....Click the check box.

[Model Name]Type the model and manufacturer of your printer.

[Make this the default printer]

.....Click the check box to set the printer as the default printer.

Click [OK] to return to the “Terminal Properties” dialog box.

Click [OK] to save the settings and close the “Terminal Properties” dialog box.

Deleting a printer settings

This enables to delete printer settings when a printer is connected to the LPT1 port.

1. Select LPT1 and click [Delete].

2. “Delete Printer” dialog box is displayed.

Click [Yes] to delete the settings of the printer.

Modifying the settings

This enables to delete printer settings when a printer is connected to the LPT1 port.

1. Select LPT1 and click [Properties...].

2. “Printer Properties” dialog box is displayed.

Change the settings as needed.

[Friendly Name].....Changes the printer's name. (If you are naming the printer, the name combination must be 31 character or less.)

- When your printer is listed

[Manufactures] / [Printers]

.....Select the manufacturer and model of your printer.

- When your printer is not listed

[User Defined].....Click the check box.

[Model Name]Type the model and manufacturer of your printer.

[Make this the default printer]

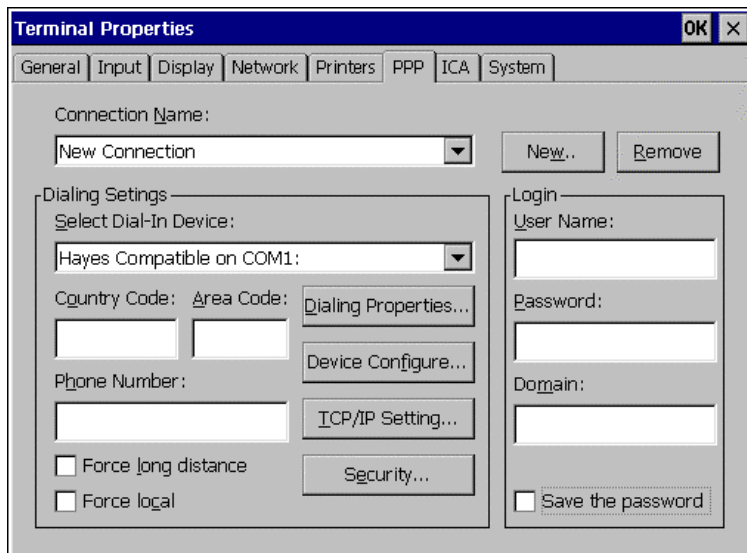
.....Sets/cancels setting the printer as a default. (The eClient corresponds to only LPT1 port, and only one printer at a time can be installed. The installed printer will be always the default printer.)

Click [OK] to return to the “Terminal Properties” dialog box.

Click [OK] in the “Terminal Properties” dialog box to save the settings and close the “Terminal Properties” dialog box.

6-6. Dial-Up (PPP) Connection Settings (531L/531LT-GR only)

Click [PPP] tab to adjust the dial-up settings of eClient.



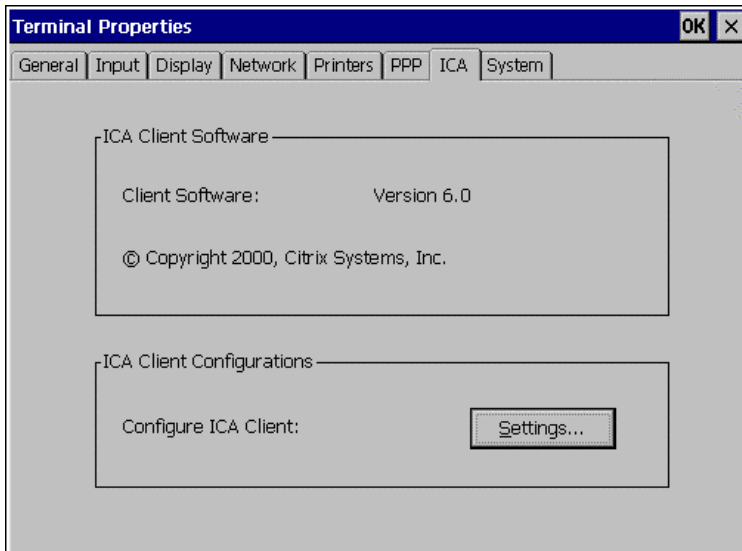
The following details the installation of a dial-up connection to a WTS or a Web Server. (To use a dial-up connection requires an RAS server in operation.) Please see page 27 for each setting.

6-7. ICA Settings

Click [ICA] tab to confirm information about Citrix ICA Client version and to change the settings when connecting to the Citrix Server with ICA protocol.

NOTE

- The ICA settings are effective only when the unit is connected to the WTS with ICA protocol. Also, the settings will affect all the settings with ICA protocol.



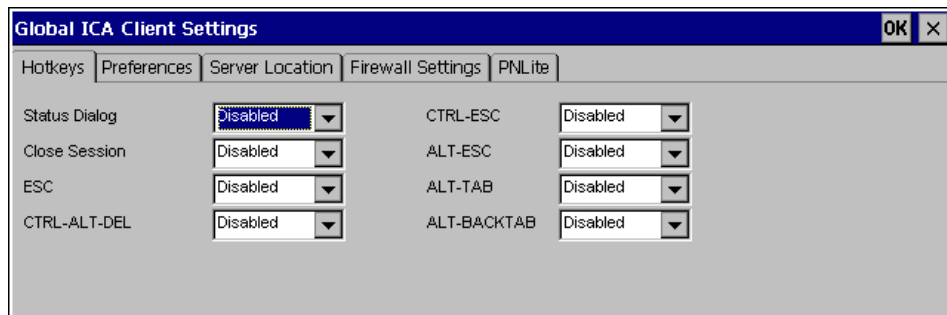
Confirming Citrix ICA Client information

[Client Software].....Version of the Citrix ICA Client.

General Settings of the ICA Connection

You can change the settings for the ICA Connection.

1. Click [Settings...].
2. “Global ICA Client Settings” dialog box is displayed.



[Hotkeys] tabEnables to change the hotkeys when logging on to the Server. There are the hotkeys to control the eClient and the ones same as standard Windows hotkeys. Please refer to the instruction manual of the Citrix MetaFrame for details.

NOTE

- No hotkeys are set in the eClient in the factory default.

[Preference] tabSelect Colors sent from WTS, and type a client name to identify this unit on the network. The color setting change affects when adding a new connection.

[Server Location] tabType the server location when the WTS is not on the same network (see page 42). This enables to change the server group name as well.

[Firewall Settings] tabChange the settings of Firewall and SOCKS proxy server (see page 50).
This setting change is displayed when adding a new connection.

NOTE

- If connecting a WTS through internet, the settings should be completed before the WTS is selected.
- If you configure a default SOCKS proxy server, you must specify at least one WTS in the [Server Location] tab for a WTS and published application browsing to work.
- If the Firewall settings are changed at the eClient, it is impossible to cancel the settings of a specific connection name. To change the Firewall settings, select a specific connection name and modify them or add a new connection name and change the settings.

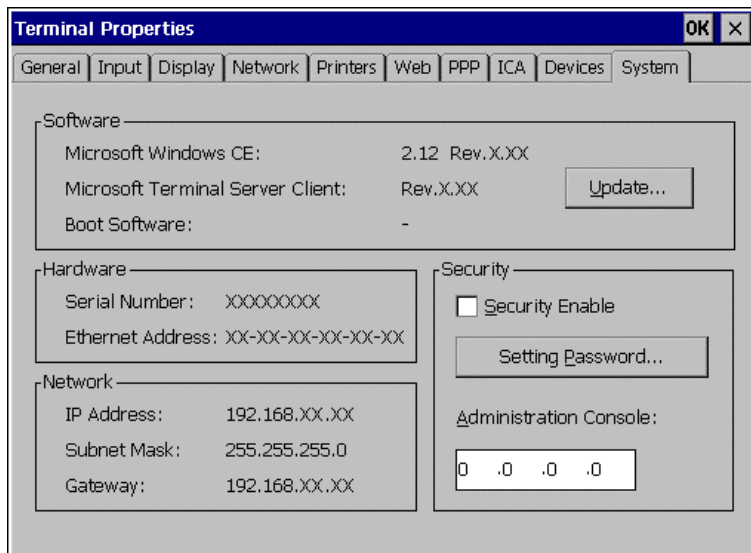
[PNLite] tab.....Register a public application name to a Terminal Connection Manager as a Connection Entry.

Click [OK] to return to the “Terminal Properties” dialog box.

Click [OK] of the “Terminal Properties” to close the “Terminal Properties” and save the settings.

6-8. Product Information, Security & Updating Software

Click [System] tab to confirm information about the eClient, to set the security, and to update firmware.



Product Information

- [Software]
 - [Microsoft Windows CE]Microsoft Windows CE Version, Revision
 - [Windows Terminal Server Client]Window Terminal Server Client Revision
 - [Boot software]Boot Software Version of the eClient
 - [Update...]See page 83.

- [Hardware]
 - [Serial Number]Serial Number of the unit
 - [Ethernet Address]Ethernet address for the unit

- [Network] (Information adjusted for the connection to a WTS)
 - [IP Address]IP address of the unit
 - [Subnet Mask]Subnet mask of the unit
 - [Gateway]IP address of the Gateway machine if necessary

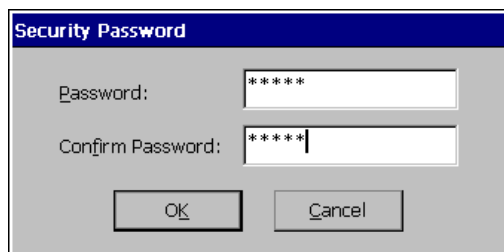
Security Settings

This enables settings on network information of the WTS invisible to prevent from undesirable change. When the security is active, the following settings become.

- “Terminal Connection Manager”
 - * [Configure] tab
- “Terminal Properties”
 - * [General] tab... [Reset the terminal to factory - default settings]
 - * [Network] tab
 - * [Printers] tab
 - * [PPP] tab
 - * [ICA] tab
 - * [System] tab... [Update...], [Security]

PROCEDURE

1. Click the [Security Enable] box.
2. Click [Setting Password...].
3. “Security Password” dialog box is displayed.



[P]assword]Enter the password.

[C]onfirm password:]Enter the same password for confirmation

Click [Ok] to return to the “Terminal Properties” dialog box.

Click [OK] to save the settings and close the “Terminal Properties” dialog box.

CANCELING SETTINGS

1. Display “Terminal Connection Manager”.
2. Press [Ctrl], [A], and [F2] at the same time.
3. “Enter Security Password” dialog box is displayed.



[Password:]Enter the password
Click [OK] on [Enter Security Password] when finished.

4. All settings in the “Terminal Properties” will be active.

Click the [Security Enable] check box on the [System] tab and remove the check mark.

Click [OK] on the “Terminal Properties” to save the settings and close the “Terminal Properties”. Security becomes canceled.

Administration Console

Assign the eClient a server with the Network Administrator, utility software for eClient. Other servers with the Network Administrator will not be able to control the eClient after setting the administration console.

[Administration Console]....assign an IP address of a server with the Network Administrator.

Software Updating

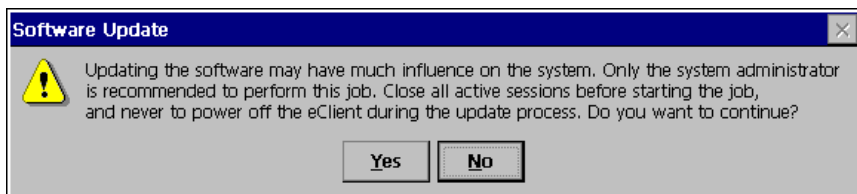
You can update the built-in software.

NOTE

- Before updating, please complete the following:
 - * Copy the update file (*.bin) to the accessible file folder of the FTP Server.
 - * If the WTS is connected with LAN, close all the connections to the FTP Server.
 - * Make a dial-up connection if it is adopted to connect the WTS. Software Updating is not available if a dial-in is adopted to connect the WTS.

1. Click the [Update...] of [Software].

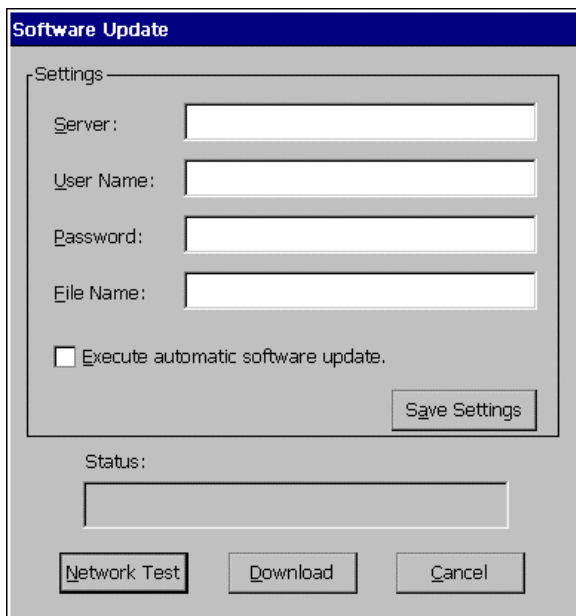
The following message appears.



Obey the instruction of the message completely and do not turn off the unit while updating.

Click [Yes] to continue.

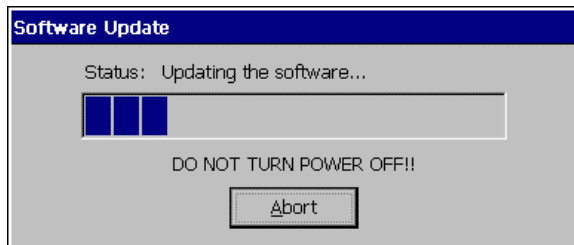
2. The “Software Update” dialog box appears.



- [Server:]Type IP address or full domain name of the FTP Server.
- [User Name:].....Type the user name to connect the FTP Server.
- [Password:]Type the password for the user name to connect the FTP Server.
- [File Name:]Type the folder and copied file name located in the FTP Server.
<Example>
Type the file name as indicated below if the file is in the “update folder” in the “software folder”:
 \software\update*.bin

NOTE

- Clicking the "Execute automatic software update." check box will automatically consult the update file in the location indicated in the "Software Update" dialog box each time turning on the unit. If the update file consulted is newer, the software will be updated automatically while displaying the following dialog box. When updating the software, please set the following; (This function is not available for a modem connection. Please do not click the check box.)
 - * Keep the keyboard and the mouse connected. (Operate with the keyboard and the mouse if failed to update.)
 - * Click [Save Settings] to save settings.

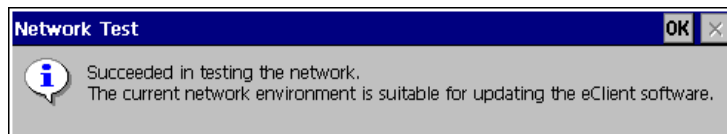


- Click [Save Settings] if using the same settings for the next update.
 - * After inputting information, click [Save Setting] if using the "Automatic Update" function.

3. Preventing from update failure, check if the settings are correct and the network environment is suitable.

Click [Network Test].

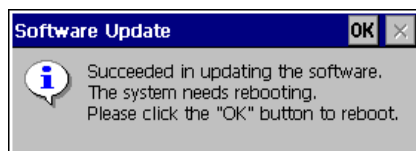
If the settings are correct, the following message is displayed.



Click [OK].

4. Click [Download].

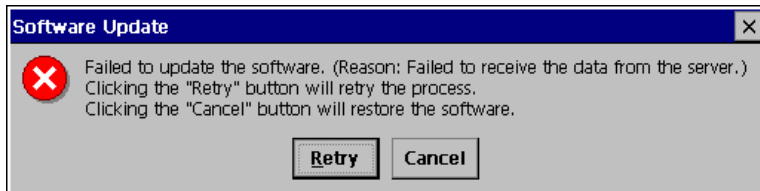
The following message is displayed when you successfully download the software.



Click [OK] and restart the eClient.

NOTE

- Failing to download results in program's returning to the "Software Update" dialog box.



- * In case of returning to the "Software Update" dialog box, confirm such as network settings and redo the [Settings] before clicking [Download].
- * In case of retry dialog box is displayed, confirm connection or network settings by following the message, and click [Retry]. If the setting still fails, click [Cancel] to automatically restore the original software and restart the unit. the unit restarts and resets the update settings. Set the "Software Update" settings once again and download the software from the FTP Server. Do not turn off the unit when this dialog box is displayed until all the process is completed. The eClient will not restart correctly.

7. PRACTICAL SETUP

By utilizing the DHCP Option function of the DHCP Server, necessary information is supplied by the DHCP Server, and each setting is automatically set every time the unit is turned on.

The following information can be obtained by the eClient.

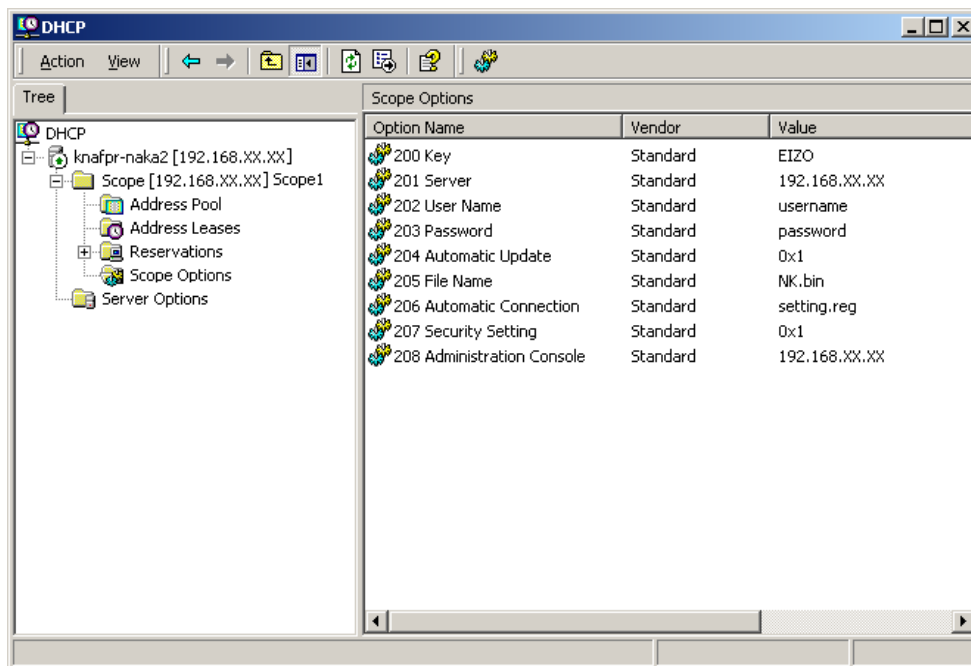
- WTS/Web Server Connection Settings
- Automatic Software Update
- Security Settings
- Administration Console Setting

NOTE

- For DHCP Option settings, confirm the following:
 - * The eClient is connected to the WTS/Web server through built-in LAN.
 - * A DHCP Server is used for obtaining the IP address.
- If you need to change the following settings from the defaults, please change them before using the DHCP option function.
(information not given by using the DHCP option)

Items	Default Settings	
Input Tab	Locale (Input Language)	English (United States)
	NumLock Enable on Boot UP	Enable
	Button Configuration	Right-Handed
	Enable right click emulation (531LT-GR)	Enable
	Holding time (531LT-GR)	3 seconds
Display Tab	Desktop area and color	1024 x 768 256 Colors
	Enable Screen Saver / Wait	Enable / 5 Minutes
	Enable Power Save / Wait	Enable / 1 Minute
	Contrast/Brightness	Maximum
	[Enable Contrast/Brightness control from Keyboard]	Enable
Printer Tab	Printer Settings	No printer connected
ICA Tab	Hotkeys	Disable
	Colors	256 colors
	Client Name	eClient***** (Last 6 digits of the Mac address)
	Server Location	Automatically Found
	Firewall Settings	Disabled

DHCP Server Settings



Please open DHCP settings to configure each DHCP Option as follows.

- [Key]Set the value as “EIZO”. (The eClient will not accept any value but “EIZO”.)
- [Server]Type an IP address of the Server installing an update file and a registry file of the eClient.
- [User Name].....Type the user name to logon to the FTP Server.
- [Password]Type the password for the user name.
- [Automatic Connection]Enable/unable an automatic connection.
- [File Name]Type the file name to update the software of the eClient.
- [Security Setting]Enable/unable the security settings.
- [Administration Console]....Type the IP address of the Server where Network Administrator (eClient utility software) is installed.

NOTE

- Making a Registry File to Connect to a WTS/Web Server.
Please refer to the example below, make a registry file, and save it in Unicode format. Please change the italic bold phrases as necessary.
 - **ConnectionName**
: Type the connection name in the "Terminal Connection Manager".
 - **TerminalServerAddress**
: Type the IP address or the full domain name of the WTS.
 - **URL**
: Type the URL of the Web Server. (Including "http://".)

Registry file	Value
[HKEY_LOCAL_MACHINE\SOFTWARE\Microsoft\WBT]	
"SetupWizardEnabled"=dword:0	Specifies whether starting up "WBT Setup Wizard" or not. (Fixed to "0")

(RDP Connection)

Registry file	Value
[HKEY_LOCAL_MACHINE\SOFTWARE\Microsoft\WBT\Clients\Registration\RDP\Connections\ConnectionName]	
"DeleteCmdLineArgs"="/d ConnectionName	Command argument to delete connection information
"DeleteExe"="TSConMan"	Fixed - command (an executable file) to delete connection information.
"PropertiesCmdLineArgs"="/e ConnectionName	Command argument to change connection information.
"PropertiesExe"="TSConMan"	Fixed - Command (executable file) to change connection information
"StartCmdLineArgs"="/" ConnectionName "	Command argument to connect to a WTS
"StartExe"="mstsc.exe"	Fixed - Command (executable file) to connect to a WTS
"Description"="/" ConnectionName "	Name displayed on the Connection Manager
[HKEY_CURRENT_USER\Software\Microsoft\Terminal Server Client\ConnectionName]	
"Full Address"="/" TerminalServerAddress "	IP address or full domain name of the WTS

(ICA Connection)

Registry file	Value
[HKEY_LOCAL_MACHINE\SOFTWARE\Microsoft\WBT\Clients\Registration\ICA\Global\WFCClient]	
"Version"="2"	Event for use of ICA protocol. (Fixed to "2")
[HKEY_LOCAL_MACHINE\SOFTWARE\Microsoft\WBT\Clients\Registration\ICA\Connections\ConnectionName]	
"DeleteCmdLineArgs"="/D:" ConnectionName "	Command argument to delete connection information
"DeleteExe"="CEICAMGR"	Fixed - command (an executable file) to delete connection information.
"PropertiesCmdLineArgs"="/P:" ConnectionName "	Command argument to change connection information.
"PropertiesExe"="CEICAMGR"	Fixed - Command (executable file) to change connection information

"StartCmdLineArgs"="/L " ConnectionName "	Command argument to connect to a WTS
"StartExe"="WFICACE"	Fixed - Command (executable file) to connect to a WTS
"ScreenPercent"="100"	Fixed - Assign the ratio of the eClient screen to the displayed Window of the WTS.
"Description"="ConnectionName"	Name displayed on the Connection Manager
"Address"="TerminalServerAddress"	IP address or full domain name of the Meta Frame Server

(Web Connection)

Registry	Value
[HKEY_LOCAL_MACHINE\SOFTWARE\Microsoft\WBT]	
"SetupWizardEnabled"=dword:0 Specifies whether starting up "WBT Setup Wizard" or not. (0; not starting up, 1; starting up)
[HKEY_LOCAL_MACHINE\SOFTWARE\Microsoft\WBT\Clients\Registration\Web\Connections\Web1]	
"StartCmdLineArgs"="URL" Specifies the URL (including http://) to access.

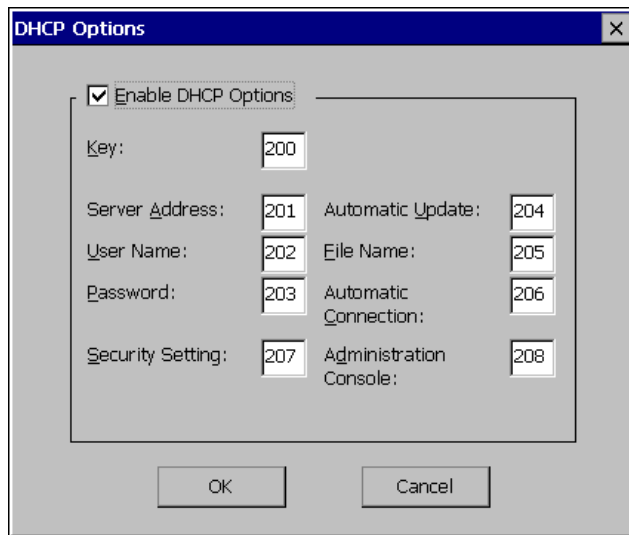
Registry	Value
[HKEY_LOCAL_MACHINE\SOFTWARE\Microsoft\WBT\Shell]	
"EnableAutoConnect"=dword:1 Specifies whether to enable/disable automatic connection. (0;disable, 1;enable)
"ConnectionDefaultKey"="ConnectionName" Specify connection information name of the automatic connection.
"ConnectionDefaultType"="RDP" Specify the type of the automatic connection. (The type is RDP, ICA, or Web.)

*¹ One entry name can be set at the Administration Console function.

eClient Settings

The eClient's default setting is to enable DHCP Options. There is no need for extra settings. After initial setup, confirm the following:

- [Use PPP connection or another network adapter] in the [Network] tab of “Terminal Properties” is selected.
- Press “DHCP Option” on “Network” tab in the “Terminal Properties”. “DHCP Options” is displayed.



[Enable DHCP Option] is selected, and code numbers assigned for the DHCP options.

After completing the above, the eClient will automatically receive information such as an IP address from the DHCP Server every time the unit is turned on.

NOTE

- If the DHCP Option is used to setup the eClient for the first time, “Terminal Connection Manager” will appear because the unit automatically receives information from the DHCP Server. (“WBT Setup Wizard will not be displayed.)
- If the DHCP Option is set once and needs to be canceled, please change the key of the DHCP Server. Even if changing the DHCP Option in the eClient, the DHCP Server will overwrite the option next time the unit is restarted, and the changes in the eClient will not be effective.

8. TROUBLESHOOTING

This page presents problem that can be corrected by the user. If a problem persists even after applying the suggested remedies, contact an EIZO dealer.

Problems	Points to check with possible solutions
1. No picture is displayed on the screen.	<input type="checkbox"/> Check if the power is OFF. <input type="checkbox"/> Check brightness setting. Minimum settings will cause screen to be blank. <input type="checkbox"/> Try pressing a key on the keyboard, or clicking the mouse. (The monitor may be in a power saving mode.)
2. The following messages appear on screen after the power is on: (The operation automatically starts up after the message disappears.) * “WARNING No Keyboard Connected” * “WARNING No Mouse Connected”	<input type="checkbox"/> Check if the cable of the keyboard is securely connected to the proper connector. <input type="checkbox"/> Check if the cable of the mouse is securely connected to the proper connector. (In use of a stylus or a finger as an input device, “No Mouse Connected!!” caution does not effect your operation.) <input type="checkbox"/> Turn off the power, and turn it on a few seconds later.
3. Input devices (such as a keyboard, a mouse, a stylus) does not work properly.	Solution on a mouse or a keyboard <input type="checkbox"/> Check if the cable of the keyboard or the mouse is securely connected. <input type="checkbox"/> Check if the cable of the keyboard or the mouse is connected to the proper connector. Solution on a stylus (531LT-GR) <input type="checkbox"/> The touch panel may not be calibrated properly. Please recalibrate the touch panel (see page 65). Solution on a keyboard, a mouse, and a stylus (531LT-GR) <input type="checkbox"/> Check if the network cable or the modem is securely connected. (To make sure the ethernet cable is connected securely, check if one of the indicators on the ethernet connector turns green.)

Problems	Points to check with possible solutions
4. Afterimages appear on the screen.	<input type="checkbox"/> When the screen image has been changed after displaying the same image for a long period, afterimages may appear. Use the screen saver and avoid leaving the screen on all the time.
5. The screen has defective pixels (e.g. slightly light or dark).	<input type="checkbox"/> This is due to the characteristics of the panel itself, and not the failure.
6. Finger prints appear on the screen.	<input type="checkbox"/> Leaving the white screen on may solve the problem.

NOTE

- Please do not connect and disconnect a keyboard or a mouse repeatedly while the eClient is in operation, as this may cause the eClient damage.

9. CLEANING

Periodic cleaning is recommended to keep the monitor looking new and to prolong its operation lifetime.

NOTE

- Never use thinner, benzene, alcohol (ethanol, methanol, or isopropyl alcohol), abrasive cleaners, or other strong solvents, as these may cause damage to the cabinet or LCD panel.

Cabinet

To remove stains, wipe the cabinet with a soft, lightly moistened cloth using a mild detergent. Do not spray wax or cleaner directly onto the cabinet.

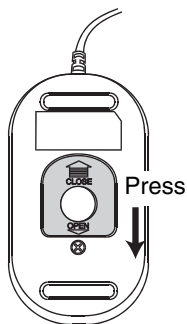
LCD Panel

- The LCD surface can be cleaned with a soft cloth, such as cotton or lens paper.
- If necessary, stubborn stains can be removed by moistening part of a cloth with water to enhance its cleaning power.

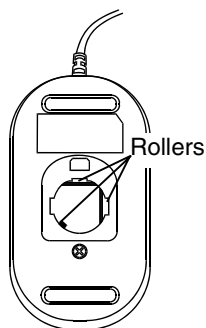
Mouse

If you find that the pointer on the screen doesn't move smoothly, your mouse needs to be cleaned. Periodically clean the mouse for your operation.

- (1) Turn off the eClient.
- (2) Turn the mouse upside down and remove the mouse trackball cover. Press the cover towards "Open" while pulling the other side of the cover.



- (3) Remove the trackball.
- (4) Wipe the trackball with a soft cloth with neutral detergent.
- (5) Clean all the rollers, getting all the lint off of them.
You can use a wet cotton swab to clean the rollers. Turn them to clean the entire roller.



- (6) Remove the dust inside of the mouse.
- (7) Put the trackball back into the mouse.
- (8) Close the mouse trackball cover.

10. SPECIFICATIONS

530L

CPU and Memory	CPU	NEC VR4121-168, 168 MHz
	Memory	RAM; 32 MB, ROM;16 MB
	LAN	10BASE-T
Display	LCD Panel	38 cm (15 inch) TFT color LCD panel Anti-Glare Hard Coating (Viewing Angle: Horizontal; 120°, Vertical; 140°)
	Dot Pitch	0.297 mm x 0.297 mm
	Resolution	1024 x 768
	Viewable Image Size	304.1 mm (H) x 228.1 mm (V) (11.9" (H) x 8.9" (V))
	Display Color	256 / 65536 colors
Complying Protocol		Microsoft Remote Desktop (RDP) Citrix Independent Computing Architecture (ICA)
Software		Microsoft Windows CE Version 2.12 Windows-based Terminal 1.5 Browser Add-on Citrix ICA Client 6.3
Complying Software for Windows Terminal Server		Microsoft Windows NT Server 4.0 Terminal Server Edition, Microsoft Windows 2000 Server / Advanced Server / DataCenter Server, Citrix MetaFrame 1.8 / 1.8 + FR1 / XP
Mouse		PS/2 2 button Mouse
Power Supply		100-120/200-240 VAC \pm 10 %, 50/60 Hz, 0.5/0.3 A
Power Consumption		Min: 30 W, Power saving mode: Less than 5 W
Interface Connector	LAN	10BASE-T (RJ-45) x 1
	Keyboard, Mouse	PS/2 (Mini DIN 6 pin) x 2
	Parallel	IEEE1284 (D-Sub 25 pin) x 1
Dimensions (With the tilt stand)		396 mm (W) x 390 mm (H) x 164 mm (D) (15.6" (W) x 15.4" (H) x 6.5" (D))
Weight		5.0 kg (11.0 lbs.) (without the tilt stand 3.6 kg (7.9 lbs.))
Environmental Specifications		Temperature Operating: 0°C to 35°C (32°F to 95°F) Storage: -20°C to 60°C (-4°F to 140°F) Humidity 30 % to 80 % R.H. Non-condensing
Certifications and Standards		
100 -120 VAC range		TÜV/NRTL, c-TÜV, FCC class A, CB, TÜV Rheinland Ergonomics Approved, EPA ENERGY STAR® program, TCO'99
200-240 VAC range		CE, CB, TÜV Rheinland/GS, TÜV Rheinland/Ergonomic Approved, EPA ENERGY STAR® program, TCO'99

531L

CPU and Memory	CPU	NEC VR4121-168, 168 MHz
	Memory	RAM; 32 MB, ROM;16 MB
	LAN	10BASE-T
Display	LCD Panel	38 cm (15 inch) TFT color LCD panel Anti-Glare Hard Coating (Viewing Angle: Horizontal; 120°, Vertical; 140°)
	Dot Pitch	0.297 mm x 0.297 mm
	Resolution	1024 x 768 (768 x 1024)
	Viewable Image Size	304.1 mm (H) x 228.1 mm (V) (11.9" (H) x 8.9" (V))
	Display Color	256 / 65536 colors
Complying Protocol		Microsoft Remote Desktop (RDP) Citrix Independent Computing Architecture (ICA)
Software		Microsoft Windows CE Version 2.12 Windows-based Terminal 1.5 Browser Add-on Citrix ICA Client 6.3
Complying Software for Windows Terminal Server		Microsoft Windows NT Server 4.0 Terminal Server Edition, Microsoft Windows 2000 Server / Advanced Server / DataCenter Server, Citrix MetaFrame 1.8 / 1.8 + FR1 / XP
Mouse		PS/2 2 button Mouse
Power Supply		100-120/200-240 VAC ± 10 %, 50/60 Hz, 0.5/0.3 A
Power Consumption		Min: 30 W, Power saving mode: Less than 5 W
Interface Connector	LAN	10BASE-T (RJ-45) x 1
	Keyboard, Mouse	PS/2 (Mini DIN 6 pin) x 2
	Parallel	IEEE1284 (D-Sub 25 pin) x 1
	Serial Port	RS-232C (D-Sub 9 pin) x 1
Dimensions (With the tilt stand)		396 mm (W) x 390 mm (H) x 164 mm (D) (15.6" (W) x 15.4" (H) x 6.5" (D))
Weight		5.0 kg (11.0 lbs.) (without the tilt stand 3.6 kg (7.9 lbs.))
Environmental Specifications		Temperature Operating: 0°C to 35°C (32°F to 95°F) Storage: -20°C to 60°C (-4°F to 140°F) Humidity 30 % to 80 % R.H. Non-condensing
Certifications and Standards		
100 -120 VAC range		TÜV/NRTL, c-TÜV, FCC class A, CB, TÜV Rheinland Ergonomics Approved, EPA ENERGY STAR® program, TCO'99
200-240 VAC range		CE, CB, TÜV Rheinland/GS, TÜV Rheinland/Ergonomic Approved, EPA ENERGY STAR® program, TCO'99

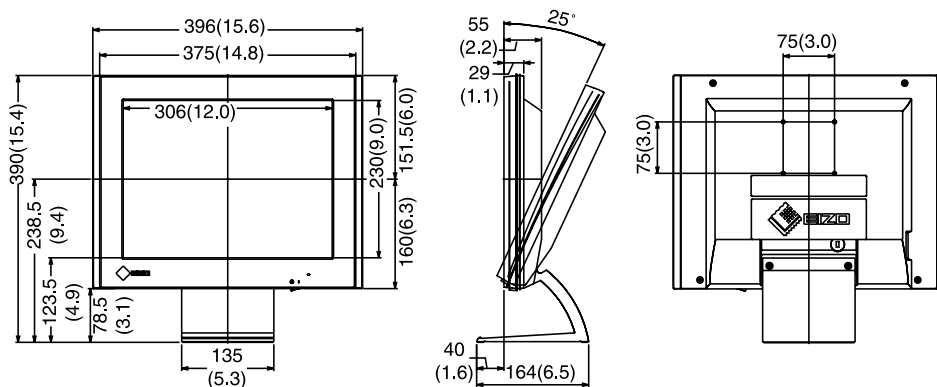
531LT-GR

CPU and Memory	CPU	NEC VR4121-168, 168 MHz
	Memory	RAM; 32 MB, ROM;16 MB
	LAN	10BASE-T
Display	LCD Panel	38 cm (15 inch) TFT color LCD panel Anti-Glare Hard Coating (Viewing Angle: Horizontal; 120°, Vertical; 140°)
	Dot Pitch	0.297 mm x 0.297 mm
	Resolution	1024 x 768 (768 x 1024)
	Viewable Image Size	304.1 mm (H) x 228.1 mm (V) (11.9" (H) x 8.9" (V))
	Display Color	256 / 65536 colors
Touch Panel		Detective Method; Analog Resistive Type Surface Treatment; Non-Glare Coating
Complying Protocol		Microsoft Remote Desktop (RDP) Citrix Independent Computing Architecture (ICA)
Software		Microsoft Windows CE Version 2.12 Windows-based Terminal 1.5 Browser Add-on Citrix ICA Client 6.3
Complying Software for Windows Terminal Server		Microsoft Windows NT Server 4.0 Terminal Server Edition, Microsoft Windows 2000 Server / Advanced Server / DataCenter Server, Citrix MetaFrame 1.8 / 1.8 + FR1 / XP
Mouse		PS/2 2 button Mouse
Power Supply		100-120/200-240 VAC \pm 10 %, 50/60 Hz, 0.5/0.3 A
Power Consumption		Min: 30 W, Power saving mode: Less than 5 W
Interface Connector	LAN	10BASE-T (RJ-45) x 1
	Keyboard, Mouse	PS/2 (Mini DIN 6 pin) x 2
	Parallel	IEEE1284 (D-Sub 25 pin) x 1
	Serial Port	RS-232C (D-Sub 9 pin) x 1
Dimensions (With the tilt stand)		396 mm (W) x 390 mm (H) x 164 mm (D) (15.6" (W) x 15.4" (H) x 6.5" (D))
Weight		5.0 kg (11.0 lbs.) (without the tilt stand 3.6 kg (7.9 lbs.))
Environmental Specifications		Temperature Operating: 0°C to 35°C (32°F to 95°F) Storage: -20°C to 60°C (-4°F to 140°F) Humidity 30 % to 80 % R.H. Non-condensing
Certifications and Standards		
100 -120 VAC range		TÜV/NRTL, c-TÜV, FCC class A, CB, EPA ENERGY STAR® program
200-240 VAC range		CE, CB, TÜV Rheinland/GS, EPA ENERGY STAR® program

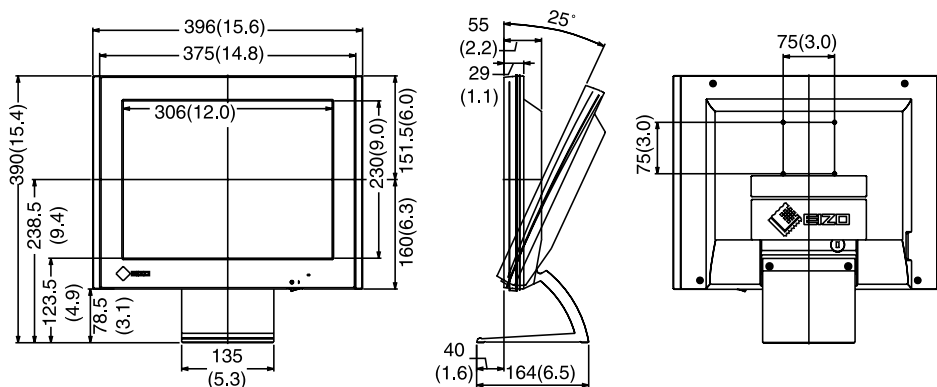
Dimensions

mm (inches)

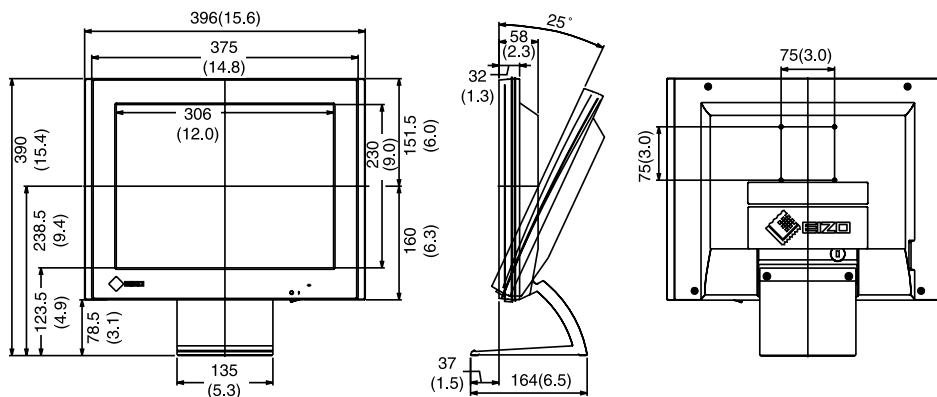
530L



531L



531LT-GR



11. REFERENCE

11-1. Attaching an Arm Stand

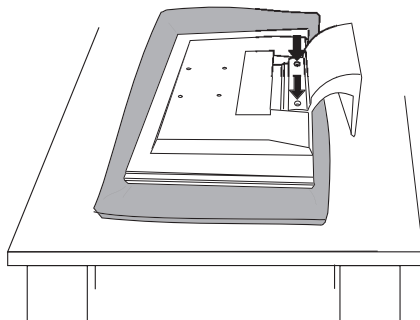
The eClient can be used with an arm stand by removing the tilt stand and attaching the arm stand to the terminal.

NOTE

- Use an arm stand that satisfies the following.
 - When using the eClient with an arm stand, the arm stand must be VESA approved :
Use an arm stand with a 75 mm x 75 mm hole spacing on the arm mounting pad.
Use an arm stand that is able to support an object weighing 8.0 kg.
A GS approved arm stand.
 - Use an arm stand with sufficient stability (mechanical firmness) to support the weight of the monitor.
 - Use an arm stand remaining that position where it is manually moved.
 - Use an arm stand with the ability to tilt the monitor forward and backward.
- Please connect cables after attaching an arm stand.

Setup Procedure

- 1.** Lay the eClient down as shown below. Do not scratch the panel.



- 2.** Remove the stand by loosening the screws (M4 x 16 mm).

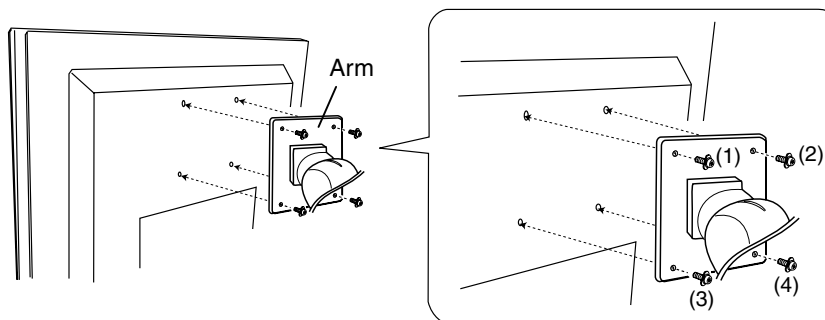
3. Attach an arm stand to the eClient securely.

WARNING

Install the unit securely when attaching to an arm stand.

When attaching an arm stand, please refer to the user's manual of the arm stand and install the unit securely with the enclosed screws. Not doing so may cause the unit to come unattached, which may result in injury or equipment damage. When the unit is dropped, please ask your dealer for advice. Do not continue using a damaged unit. Using a damaged unit may result in fire or electric shock.

When reattaching the stand, please use the same screws (M4 x 16 mm) and tighten them securely.



(1), (2), (3), (4): Enclosed Screws, M4 x 12 mm

INDEX

- A**
- ADDING & CHANGING A CONNECTION
 - NAME34
 - Administration Console82
 - Application to Run.....38, 46
 - Attaching an Arm Stand.....100
 - Automatic Logon37, 47
 - Autostart Connection55
- B**
- Brightness6, 69
- C**
- Calibration65
 - Citrix Server or Published Application
 - Selection42
 - Cleaning94
 - Client Name78
 - Colors.....19, 48, 68, 78
 - Compress Data Stream49
 - Connecting the eClient10
 - Connection Name36, 39, 46, 51
 - Controls & Connectors.....7
- D**
- DHCP16, 70
 - DHCP Options71, 87
 - Dial-in Connection.....27
 - Dial-In Device.....44
 - Dial-up Connection Settings29, 76
 - Dial-Up Connection settings27
 - Disconnect60
 - DNS18
 - Domain Name18
- E**
- Editing a Connection.....53
 - Encryption Level49
- F**
- Firewall Settings.....50, 79
- G**
- General Information61
 - Global ICA Client Settings78
- H**
- Hotkeys78
- I**
- ICA34, 40
 - ICA Connection.....54
 - ICA Settings77
 - IP address.....16, 17, 36
- K**
- Keyboard11
 - Keyboard Settings.....63
- L**
- Local Printer Setup20
 - Logoff from the WTS.....59
 - Logon & Logoff.....56
 - Logon to a WTS56
- M**
- Making a Registry File89
 - Mouse6
 - Mouse Right Click Emulation.....65
 - Mouse Settings64
 - Multi Session.....58
- N**
- Network Settings.....28, 70
- O**
- Overview9
- P**
- Package Contents6
 - Portrait6
 - Power Indicator7
 - Printer Configuration Utility49
 - Printer Settings73
 - Product Information80
 - Program Neighborhood Lite.....79
 - Protocol.....35, 40
- R**
- RAS.....27
 - RDP34, 35
 - Reference100
 - Resetting to Default62
 - Resolution19, 68

S

Screen Saver	68
Security Settings.....	81
Serial Port	6
Server Location.....	78
Setting up.....	10
Software Updating	83
Specifications.....	96
Specify an IP Address	17
Specify Connection Type	41
SpeedScreen	49
Stylus	6
Subnet Mask.....	17

T

TCO	6
Terminal Connection Manager.....	39, 50
Terminal Name.....	16, 70
Terminal Properties.....	30, 61
Title for the ICA Connection.....	46
Touch Panel Properties.....	64
Touch screen calibration	14
Troubleshooting.....	92

W

Windows Terminal Server (WTS).....	5
WINS.....	18
WTS Connection Wizard	36

Free Manuals Download Website

<http://myh66.com>

<http://usermanuals.us>

<http://www.somanuals.com>

<http://www.4manuals.cc>

<http://www.manual-lib.com>

<http://www.404manual.com>

<http://www.luxmanual.com>

<http://aubethermostatmanual.com>

Golf course search by state

<http://golfingnear.com>

Email search by domain

<http://emailbydomain.com>

Auto manuals search

<http://auto.somanuals.com>

TV manuals search

<http://tv.somanuals.com>