

# EcoView

*A simple equation for economy*





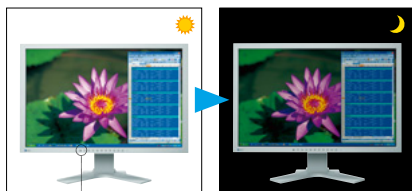
EcoView

## Ergonomic

*A little comfort and ease of use go a long way. EIZO designed the EV2411W to improve the 'fit' between you and your work so you can get more done.*

### Optimized Brightness with Auto EcoView

A sensor on the front of the monitor measures ambient light and optimizes the screen's brightness to ensure the screen is never too bright or too dark. Whereas most brightness sensors use just one reference point to determine the ideal screen brightness, Auto EcoView uses two – one for light and one for dark ambient environments. This al-



Auto EcoView Sensor

lows the monitor to more accurately achieve the desired brightness in both brightly and dimly lit rooms.

### Placement Flexibility

A selection of ergonomic stands offer height adjustment, tilt, swivel, and portrait mode viewing. This ensures proper viewing posture to help alleviate eye



Height adjustable stand

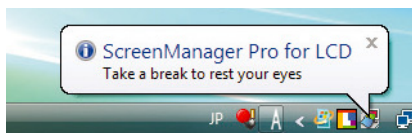


EzUp stand

fatigue as well as neck and shoulder stiffness. For installations that require frequent rearrangement of equipment, a quick mount attachment option allows the monitor to be quickly and easily mounted and dismantled.

### EyeCare Utility

EIZO's new EyeCare utility prompts workers to take scheduled breaks to avoid eye fatigue caused by prolonged monitor use. EyeCare also totals and displays on screen the monitor's usage hours for each day and month to promote worker awareness for improving work habits.



*EyeCare reminds workers to take regular breaks to prevent eye fatigue.*



EcoView

## Environmental

*All monitors produce some burden on the environment, but you can significantly lessen the load with the EV2411W thanks to its mercury-free LED backlight and low energy requirements.*

### Environmentally-Friendly LED Backlight

The EV2411W is the first EIZO monitor to incorporate an LED backlight. Unlike conventional CCFL backlights, LED backlights contain no mercury and they consume considerably less power. The EV2411W requires only about half as much power as its predecessor. In power save mode the EV2411W consumes less than 0.8 watts, and when turned off via the main power switch it consumes no electricity at all.



LED Backlight

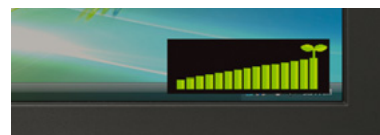
### EIZO Eco Products 2009 Compliant

Stemming from a commitment to develop products with minimal environmental impact, EIZO introduced its own internal environmental label "EIZO Eco Products" in 2002. The EV2411W is the first monitor to carry the latest version – EIZO Eco Products 2009. It sets strict internal requirements for manufacturing and packaging, stipulates that the monitor must not consume any power when turned off, and requires that its eco profile be available on the EIZO web site.



### Confirm Power Savings with EcoView Index

Another feature available for the first time on an EIZO monitor, EcoView Index displays the level of power savings in correlation with the monitor's brightness to encourage environmental consciousness while working.



*When EcoView Index is fully illuminated, the monitor is operating at optimum energy efficiency.*

### Reduce Power Consumption Across the Network

EcoView NET is remote power management software that gives administrators centralized control over the power settings of all monitors on a network. Settings include brightness adjustment, power on/off, and remote and manual scheduling. EcoView NET is compatible with Windows Vista and available free of charge.



EcoView

# Economical

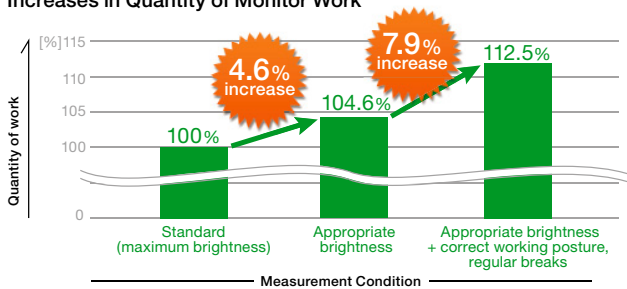
Going green shouldn't cost you extra in the long run, and with the EV2411W it won't. The increased productivity and reduced power consumption you'll enjoy will result in greater savings.

## Improved Work Efficiency, Reduced Visual Fatigue

EIZO conducted a survey in 2008 to establish the relationship between eye fatigue and monitor use. The results showed that features like Auto EcoView, ergonomic stands, and the EyeCare utility helped reduce eye fatigue and improved work efficiency by 12.5%.

For a white paper regarding this study visit [www.eizo.com/support/wp/pdf/wp\\_08-001.pdf](http://www.eizo.com/support/wp/pdf/wp_08-001.pdf).

### Increases in Quantity of Monitor Work



## Lower Power Consumption for Greater Savings

Compared to the previous 24.1" model, the EV2411W consumes 52% less power straight out of the box and 42% less with Auto EcoView turned on. This tremendous reduction, zero watt power consumption when the monitor is turned off, and EIZO EcoView NET software offer significant cost savings.

### Power Consumption Comparison Between EV2411W and Previous Model

Model	Out-of-Box Power	Auto EcoView ON
FlexScan S2401W	69 W	34 W
FlexScan EV2411W	<b>33 W</b>	<b>19 W</b>

52% reduction

42% reduction

## 5-Year Manufacturer's Limited Warranty

EIZO backs its monitors with a 5-year warranty. This makes the EV2411W an investment that pays off over time – doing away with worries of frequent product replacement and resultant downtime.



*“EcoView” embodies EIZO’s concept of combining ergonomic and environmental features for an economical result. An EcoView monitor contributes to increased user comfort, reduced environmental burden, and ultimately lower running costs. The first EcoView monitor, the FlexScan EV2411W, is ideal for corporate and government facilities as well as small offices and home offices that are concerned with the environment but require a high-quality monitor.*

## Eco Savings with the EV2411W

### 72.5% Reduction in Power Consumption

With an installation of 100 monitors used for 8 hours a day, 250 days a year for five years (the warranty period), you can expect to save<sup>1</sup>:

- Power Reductions . . . . . 50,000 kWh**
- CO<sub>2</sub> Emissions Reductions . . . . . 20,850 kg<sup>2</sup>**
- Trees Needed to Consume This CO<sub>2</sub> . . . . . 1,490<sup>3</sup>**
- Cost Savings . . . . . 1,289,900 JPY<sup>4,5</sup>**  
**(= 8,614 EUR or 12,352 USD)<sup>6</sup>**

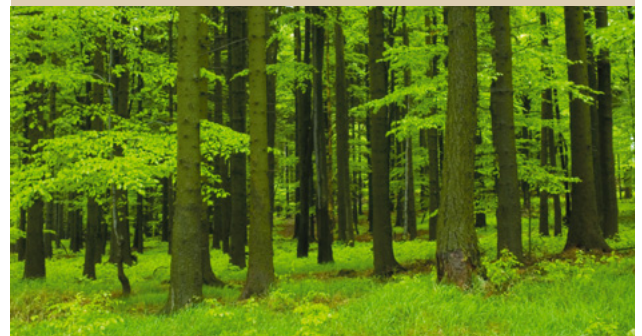
<sup>1</sup>Based on expected savings compared to using the FlexScan S2401W at a brightness of 100% in typical office lighting conditions. <sup>2</sup>Calculated from figures obtained from the Japan Environmental Management Association for Industry where one kWh of electricity produces 0.417 kg of CO<sub>2</sub>. <sup>3</sup>Calculated from figures obtained from the Japanese Ministry of Agriculture, Forestry and Fisheries where one tree (Japanese cedar) absorbs approximately 14 kg of CO<sub>2</sub> per year. <sup>4</sup>Calculated at a cost of 4 JPY/kg of CO<sub>2</sub> for an emission credit. <sup>5</sup>Calculated at a cost of 24.13 JPY/kWh based on figures published by Tokyo Electric Power Company effective September 2008. This is approximately 0.16 EUR/kWh or 0.23 USD/kWh as of September 18, 2008. <sup>6</sup>Based on exchange rates as of September 18, 2008.

### 12.5% Increase in Productivity

The results of EIZO's pioneering study of the relationship between prolonged monitor use and eye fatigue established that Auto EcoView, ergonomic stands, and the EyeCare software utility not only reduced eye fatigue, but also increased productivity by 12.5%.

### Zero Watts When Turned Off

Just turn off the EV2411W's main power switch at the end of the day and it will not add to your electricity bill while not being used at night and on weekends.



## Fine Contrast Mode Selection

For optimum viewing of different kinds of content, EIZO's Fine Contrast function includes modes for office applications (Text mode), video clips (Movie mode), graphics (Picture mode), web browsing (sRGB mode), and user-defined settings (Custom mode).

## DVI Input Level Adjustment

Compensates for image quality degradation that may occur when connecting to a signal switch box or when using a long DVI cable.

## Individual Adjustment of Gamma

EIZO performs individual adjustment of gamma at its factory to minimize discrepancies in gamma characteristics for more consistent color display between screens in a multi-monitor environment.

## Unobtrusive Speakers

0.5 watt speakers are hidden at the bottom so you



can enjoy sound while bezel size is kept to a minimum. If you require greater volume, the separately sold i-Sound



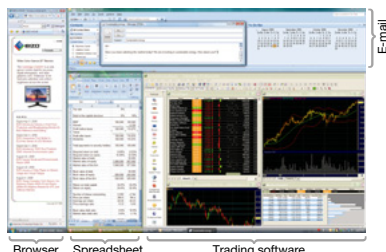
L3 sound unit with

dual 0.9 watt speakers can be attached to the bottom of the screen.

*i-Sound L3 sound unit*

## Partition Your Screen with EIZO ScreenSlicer

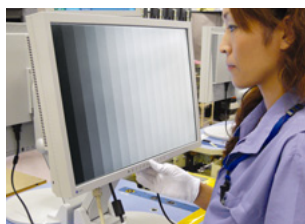
This free software utility lets you more effectively use your screen through partitioning. Simply drop your windows into configurable partitioned areas and they will be aligned instantly.



*Software windows aligned in partitioned areas.*

## Commitment to Quality

While outsourcing production is now common practice in the monitor industry, EIZO continues to manufacture its



*Each monitor is meticulously inspected and fine-tuned on the factory line.*

products the same way it has throughout its 40 year history — with its own staff at its own factories.

This allows EIZO to keep close control over production quality and offer the industry's only 5-year manufacturer's limited warranty.

## Specifications



<b>Panel</b>	<b>Panel Size and Type</b>	61 cm (24.1") TFT color LCD panel
	<b>Viewing Angles (H, V)</b>	178°, 178° (at contrast ratio of 5:1) 170°, 160° (at contrast ratio of 10:1)
	<b>Brightness / Contrast</b>	300 cd/m <sup>2</sup> / 1000:1
	<b>On/Off Response Time</b>	5 ms (typical)
	<b>Native Resolution</b>	1920 × 1200
	<b>Active Display Size (H × V)</b>	518.4 × 324 mm
	<b>Viewable Image Size</b>	Diagonal: 611 mm
	<b>Pixel Pitch</b>	0.270 × 0.270 mm
	<b>Display Colors</b>	16.77 million from a palette of 1.06 billion
	<b>Cabinet Colors</b>	
<b>Dot Clock</b>		Analog: 202.5 MHz, Digital: 162 MHz
<b>Scanning Frequency (H, V)</b>	<b>Analog</b>	31 – 94 kHz, 55 – 76 Hz
	<b>Digital</b>	31 – 76 kHz, 59 – 61 Hz (VGA Text: 69 – 71 Hz)
<b>Input Signals</b>		Analog: RGB Analog, Digital: DVI Standard 1.0
<b>Input Terminals</b>		D-Sub mini 15 pin, DVI-D 24 pin / HDCP supported <sup>1</sup> (switchable)
<b>Plug &amp; Play</b>		VESA DDC/CI, DDC 2B
<b>Power</b>	<b>Power Requirements</b>	AC 100 – 120 V, 200 – 240 V: 50 / 60 Hz
	<b>Power Consumption</b>	45 W (maximum), 19 W (typical)
	<b>Power Save Mode</b>	Less than 0.8 W
<b>Physical Specifications</b>	<b>Height Adjustment Range</b>	With Height Adjustable Stand: 82 mm With EzUp Stand: 153.1 mm
	<b>Tilt / Swivel / Pivot</b>	With Height Adjustable Stand: 40° Up, 0° Down / 35° Right, 35° Left / 90°; With EzUp Stand: 25° Up, 0° Down / 172° Right, 172° Left / 90°
	<b>Dimensions (W × H × D)</b>	With Height Adjustable Stand: 566 × 456 – 538 × 208.5 mm; With EzUp Stand: 566 × 380.4 – 533.5 × 279.9 – 307.6 mm; Without Stand: 566 × 367 × 85 mm
	<b>Net Weight</b>	With Height Adjustable Stand: 10.2 kg; With EzUp Stand: 12 kg; Without Stand: 7.2 kg
<b>Auto Brightness Functions</b>		Auto EcoView
<b>Display Mode Options</b>		Fine Contrast (Text, Picture, Movie, sRGB, Custom), Auto Fine Contrast <sup>2</sup>
<b>Screen-Manager OSD Adjustment Functions</b>	<b>Screen Adjustment</b>	
	Clock, Phase, Position, Range (Auto), Signal Filter, Screen Size (full screen, enlarge, normal), Smoothing (5 stages), Border Intensity	
	<b>Color Adjustment</b>	
	Brightness, Contrast, Gamma, Temperature (in 500 K increments from 4,000 K – 10,000 K including 9,300 K), Saturation, Hue, Gain, Reset	
	<b>Power Save Settings</b>	<b>Analog</b>
<b>Digital</b>		PowerManager (DVI DMPM)
<b>Sound</b>		Volume
<b>Other Settings</b>		EcoView Index, Sound Power Save, Signal Switching, Product Information (product name, serial number, resolution, operating time), OSD Menu Settings, Adjustment Lock, DDC/CI Lock, DVI Input Level, Languages (English, French, German, Italian, Japanese, Simplified Chinese, Spanish, Swedish, Traditional Chinese), Power Indicator, Off Timer, Reset
<b>Audio</b>		Dual 0.5 W built-in speakers, input / headphone jacks
<b>Certifications and Standards</b>		TCO'03, TÜV/Ergonomics (including ISO 13406-2), TÜV/GS, c-Tick, CE, CB, UL (cTUVus), CSA (cTUVus), FCC-B, Canadian ICES-003-B, TÜV/S, VCCI-B, EPA ENERGY STAR®, RoHS, WEEE, EPEAT Silver, EIZO Eco Products 2009
<b>Supplied Accessories</b>		AC power cord, signal cables (DVI-D – DVI-D, D-Sub – D-Sub), audio cable, EIZO LCD Utility Disk (PDF user's manual, ScreenManager Pro for LCD <sup>3</sup> , ICC Profile), setup guide, 4 screws for mount option / cable holder (EzUp stand option only), warranty card
<b>Warranty</b>		Five Years <sup>4</sup>

<sup>1</sup> Display with audio/video devices is not supported. <sup>2</sup> Bundled ScreenManager Pro for LCD is necessary to activate Auto Fine Contrast. <sup>3</sup> ScreenManager Pro for LCD is compatible with the Microsoft Windows Vista operating systems only. <sup>4</sup> The usage time is limited to 30,000 hours or less, and the warranty period of the LCD panel and backlight is limited to three years from the date of purchase. With current LCD technology, a panel may contain a limited number of missing or flickering pixels.

## Free Manuals Download Website

<http://myh66.com>

<http://usermanuals.us>

<http://www.somanuals.com>

<http://www.4manuals.cc>

<http://www.manual-lib.com>

<http://www.404manual.com>

<http://www.luxmanual.com>

<http://aubethermostatmanual.com>

Golf course search by state

<http://golfingnear.com>

Email search by domain

<http://emailbydomain.com>

Auto manuals search

<http://auto.somanuals.com>

TV manuals search

<http://tv.somanuals.com>