

User's Manual

eClient™ 630L

LCD Monitor Integrated
Windows-based Terminal

IMPORTANT

Please read this User's Manual carefully to familiarize yourself with safe effective usage procedures. Please retain this manual for future reference.

CAUTION

Please carefully read the 'PRECAUTION' section in the user's manual enclosed with the unit before using the unit.

This product has been adjusted specifically for use in the region to which it was originally shipped. If operated outside the region to which it was originally shipped, the product may not perform as stated in the specifications.



SAFETY SYMBOLS

This manual uses the safety symbols below. They denote critical information. Please read them carefully.



WARNING

Failure to abide by the information in a WARNING may result in serious injury and can be life threatening.



CAUTION

Failure to abide by the information in a CAUTION may result in moderate injury and/or property or product damage.



Indicates a prohibited action.



Indicates to ground for safety.

Copyright© 2002 by EIZO NANA0 CORPORATION. All rights reserved. No part of this manual may be reproduced, stored in a retrieval system, or transmitted, in any form or by any means, electronic, mechanical, or otherwise, without the prior written permission of EIZO NANA0 CORPORATION.

Eizo Nanao Corporation is under no obligation to hold any submitted material or information confidential unless prior arrangements are made pursuant to Eizo Nanao Corporation's receipt of said information. Although every effort has been made to ensure that this manual provides up-to-date information, please note that EIZO monitor specifications are subject to change without notice.

ENERGY STAR is a U.S. registered mark.

Microsoft, Windows, Windows NT and the Windows logo are registered trademarks of Microsoft Corporation.

Citrix, Independent Computing Architecture (ICA), and MetaFrame are registered trademarks or trademarks of Citrix Systems, Inc. in the U.S.A. and other countries.

EIZO and eClient are registered trademarks of EIZO NANA0 CORPORATION.



As an ENERGY STAR® Partner, Eizo Nanao Corporation has determined that this product meets the ENERGY STAR guidelines for energy efficiency.

TABLE OF CONTENTS

1. INTRODUCTION.....	5
1-1. General Description.....	5
1-2. Features.....	6
1-3. Package Contents	6
1-4. Controls & Connectors	7
1-5. Overview.....	9
2. CONNECTING THE 630L	10
2-1. Setting up the 630L	10
2-2. Connecting the 630L	11
3. SETTING UP THE 630L	13
3-1. WBT Setup Wizard.....	13
3-2. Connection with a LAN card.....	29
3-3. Dial-Up Connection.....	36
4. ADDING & CHANGING A CONNETION NAME.....	43
4-1. Adding a Connection Name	43
4-2. Deleting a Connection	60
4-3. Editing a Connection	61
4-4. Setting an Autostart Connection.....	64
5. LOGON & LOGOFF.....	65
5-1. Logon to a WTS / Logoff from a WTS.....	65
5-2. Opening/Closing a Local Web Browser.....	70
6. USING THE TERMINAL PROPERTIES	72
6-1. General Information & Reset to Default.....	72
6-2. Input Devices Settings.....	74
6-3. Colors & Power Save Settings	76
6-4. Network Settings	78
6-5. Printer Settings	81
6-6. Browser Settings	84
6-7. Dial-Up (PPP) Connection Settings	87
6-8. ICA Settings.....	88
6-9. Device Settings.....	91
6-10. Product Information, Security, & Updating Software.....	94
7. PRACTICAL SETUP.....	100
8. TROUBLESHOOTING.....	106
9. CLEANING.....	108
10. SPECIFICATIONS.....	110
11. REFERENCE.....	112
11-1. Attaching an Arm Stand	112

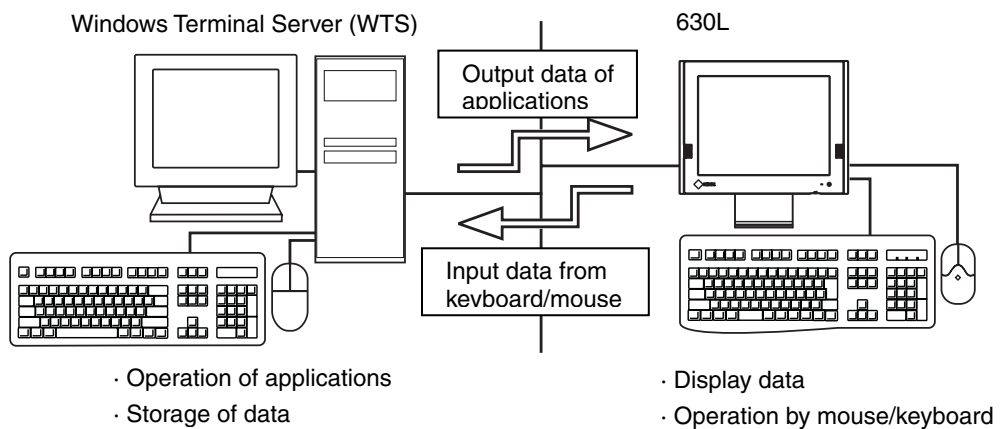
INDEX.....	114
-------------------	------------

1. INTRODUCTION

Thank you very much for purchasing the EIZO eClient 630L.

1-1. General Description

The 630L is a terminal which displays applications on a Windows Terminal Server (WTS) or a web site and conveys input by a keyboard or a mouse to the WTS. To operate the 630L, please connect it to a WTS with Microsoft Window NT Terminal Server Edition or Windows 2000 Server / Advanced Server / Datacenter Server.



1-2. Features

- Lower TCO*
 - TCO (Total Cost of Ownership)
Expense for managing and administrating computer systems.
- Saves Space and Power Consumption
- Less Heat, Less Noise
- Serial Port for Modem/PDA (*Hayes AT compatible modem supported)
- Speakers equipped
- PC card slot for modem card, LAN card, and wireless LAN card
- 2 USB downstream ports for USB HID mouse and keyboard
- Local Web Browser added as a default connection
- Wake on LAN supported
 - Wake on LAN
Wake on LAN is a function starting the 630L by another computer on LAN.

1-3. Package Contents

Please contact your local dealer for assistance if any of the listed items are missing or damaged. Please make sure that all the items listed are in the package.

- 630L
- Mouse
- Power Cord
- Screw (M4 x 12 mm) x 4
- User's Manual
- Stickers of the Brightness Control Guide

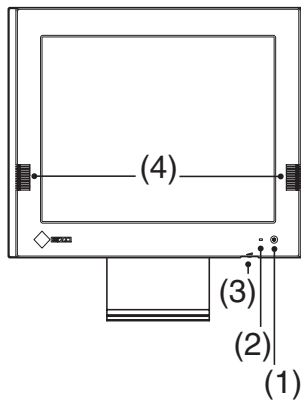
NOTE

- We recommend that you retain the original packing materials in case of future need.
- A keyboard is not included. It must be purchased separately.
- Brightness can be adjusted by using key combinations on the keyboard (see page 77). Key combinations for an adjustment is presented on the stickers. Please apply them for your convenience.

Please use the enclosed mouse. Eizo Nanao Corporation will not be held responsible for accident or damage caused by the use of a mouse manufactured by other companies.

1-4. Controls & Connectors

Front



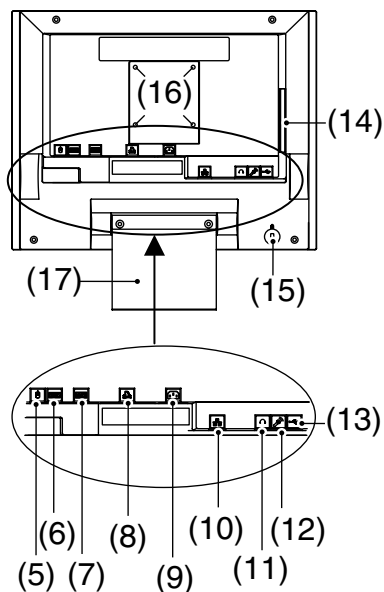
- (1) Power Switch
- (2) Power Indicator

Green	Operation Screen saver mode
Yellow	Power save mode
Off	Power off (Wake on LAN standby)

NOTE

- When turning off/on the unit, leave the unit off for a few seconds before turning it on again.
- (3) Volume
 - (4) Speakers

Rear



- (5) Mouse Connector
- (6) Keyboard Connector
- (7) Serial Port (RS-232C)
- (8) Parallel Connector
- (9) Power Connector
- (10) Ethernet Connector (10 Base-T, 100 Base-T)
- (11) Headphone Connector
- (12) Microphone Connector
- (13) USB Port (Downstream) x 2
- (14) PC Card Slot
- (15) Security Lock*¹
- (16) Holes for Mounting an Arm Stand*²
- (17) Stand

*¹ This allows for connection of a security cable. This lock supports Kensington's MicroSaver security system. For further information, please consult:

Kensington Technology Group
 2855 Campus Drive, San Mateo, CA
 94403 USA
 1-800-650-4242, x3348
 Intl: 650-572-2700
 Fax: 650-572-9675
<http://www.kensington.com>

*² Please see “11. REFERENCE” on page 112 for details.

1-5. Overview

Please refer these during 630L setup.

2. CONNECTING THE 630L		p.10
3. SETTING UP THE 630L		
	3-1. WBT Setup Wizard	p.13
	3-2. Connection	p.29
	3-3. Dial-Up Connection	p.36
4. ADDING & CHANGING A CONNETION NAME		
	4-1. Adding a Connection Name	p.43
	4-2. Deleting a Connection	p.60
	4-3. Editing a Connection	p.61
	4-4. Setting an Autostart Connection	p.64

Please refer these during the 630L operation.

5. LOGON & LOGOFF		
	5-1. Logon to a WTS / Logoff from a WTS	p.65
	5-2. Opening/Closing a Local Web Browser	p.70

Please refer these when changing terminal properties settings.

6. USING THE TERMINAL PROPERTIES		
	6-1. General Information & Reset to Default	p.72
	6-2. Input Devices Settings	p.74
	6-3. Colors & Power Save Settings	p.76
	6-4. Network Settings	p.78
	6-5. Printer Settings	p.81
	6-6. Browser Settings	p.84
	6-7. Dial-Up (PPP) Connection Settings	p.87
	6-8. ICA Settings	p.88
	6-9. Device Settings	p.91
	6-10. Product Information, Security, & Updating Software	p.94

Using the DHCP server, the 630L setup becomes very simple.

7. PRACTICAL SETUP		p.100
--------------------	--	-------

2. CONNECTING THE 630L

This chapter explains how to connect the 630L to a WTS.

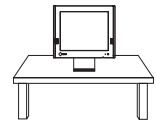
2-1. Setting up the 630L

Please observe the following cautions when connecting the 630L.

WARNING

Place the 630L on a strong, stable surface.

A unit placed on an inadequate surface may fall, resulting in injury or equipment damage. If the unit falls, disconnect the power immediately and have the unit checked by a qualified service engineer before using it again. Using a unit after it has been dropped may result in fire or electric shock.



Set the unit in an appropriate location.

- * Do not install in a dusty or humid environment.
 - * Do not place in a location where steam can have direct contact with the screen.
 - * Do not place near heat generating devices or a humidifier.
-

2-2. Connecting the 630L

NOTE

- Before connecting the 630L, confirm the following:
 - The 630L is turned off.
 - The WTS is turned on.
- Connect the peripherals to the appropriate connectors of the unit.

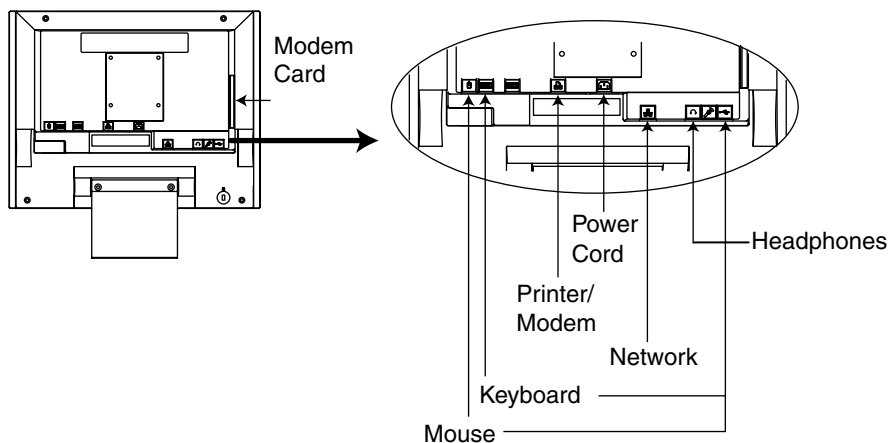
- 1.** In case of connecting the WTS through LAN:
Connect the 630L to the network with an ethernet cable.

In case of a dial-up or dial-in connection:

Connect the 630L to a modem or a modem card.

NOTE

- If using a LAN card for the connection, Please Insert a LAN card after finishing the WBT Setup Wizard (see page 29).
- Please remove the lid on the side of the 630L before connecting a modem card.



- 2.** Plug a keyboard and a mouse into the 630L. If using other devices, please connect them to the appropriate connectors.

3. Plug the power cord into the power connector.

 **WARNING**

Use the enclosed power cord and connect to the standard power outlet of your country.

Be sure to remain within the rated voltage of the power cord.

Not doing so may cause in fire or electric shock.

The equipment must be connected to a grounded main outlet.

Not doing so may cause in fire or electric shock.



3. SETTING UP THE 630L

This chapter presents how to prepare for a connection with a WTS when the 630L starts up for the first time.

3-1. WBT Setup Wizard

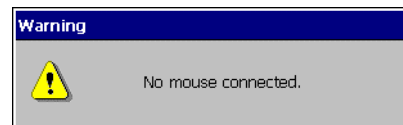
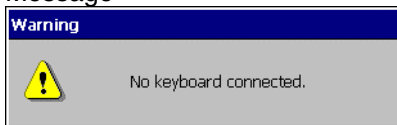
4. Turn on the 630L.

The power indicator turns green.

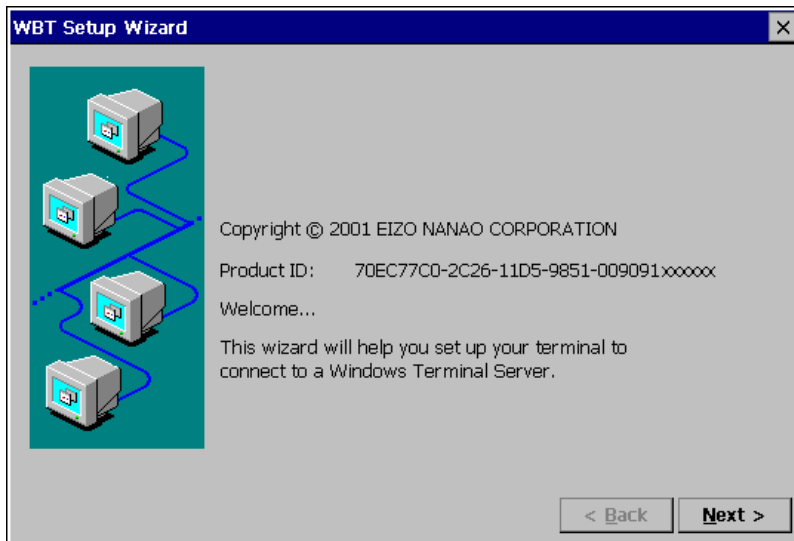
NOTE

- When no picture is displayed, or when the following message is shown on the screen, please refer to “8. Troubleshooting” on page 106.

- Message -

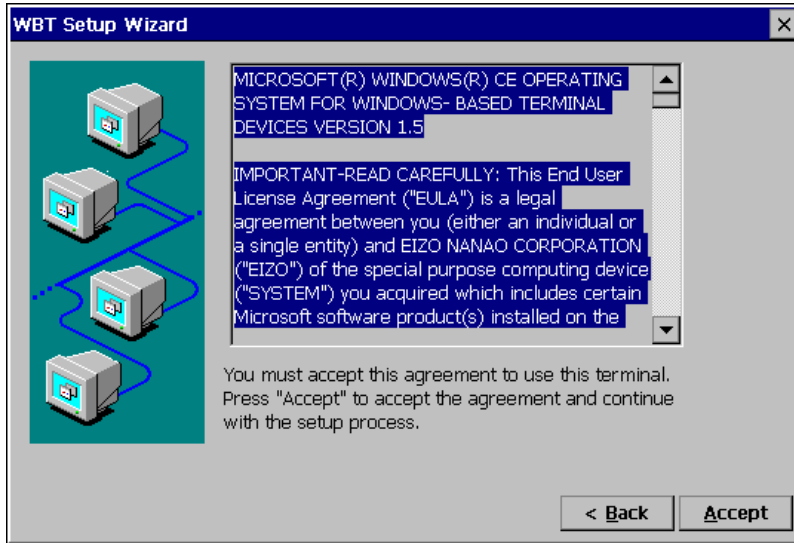


5. “WBT Setup Wizard” is displayed.



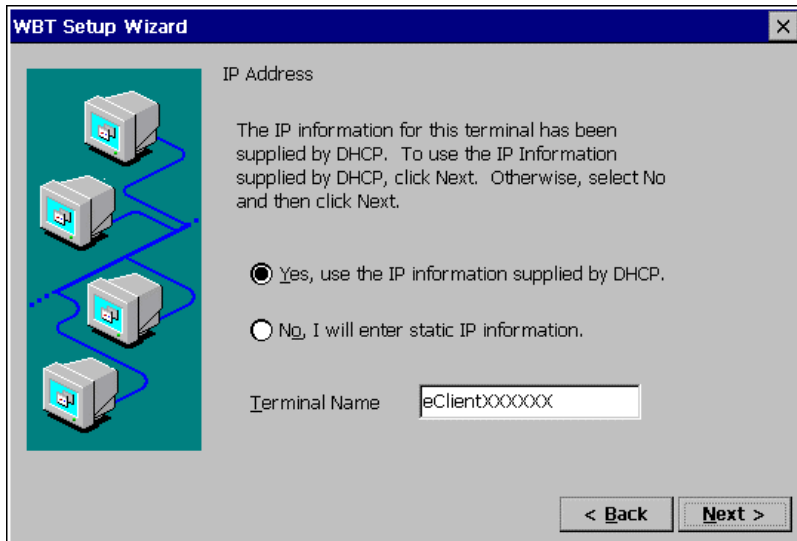
Click [Next>].

6. End User License Agreement page is displayed.



Read the content and click [Accept] to continue.

7. IP address setting page is displayed.



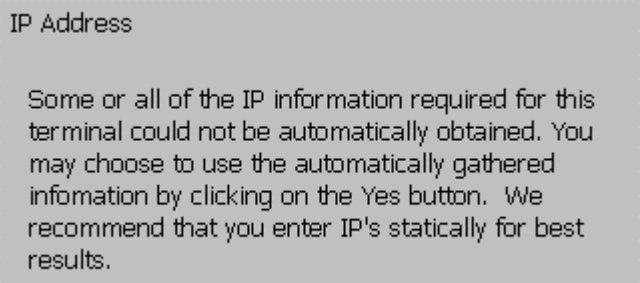
[Yes, use the IP information supplied by DHCP.]

.....Select this when using DHCP service. All the necessary information of the 630L including the IP address will be obtained by the DHCP.

[No, I will enter static IP information.]

.....Select this when not using DHCP service. Enter the IP address of the 630L.

If DHCP service is not in operation, following message appears.



Type a [Terminal Name] for connection to a WTS by the RDP (Microsoft Remote Desktop Client) protocol.

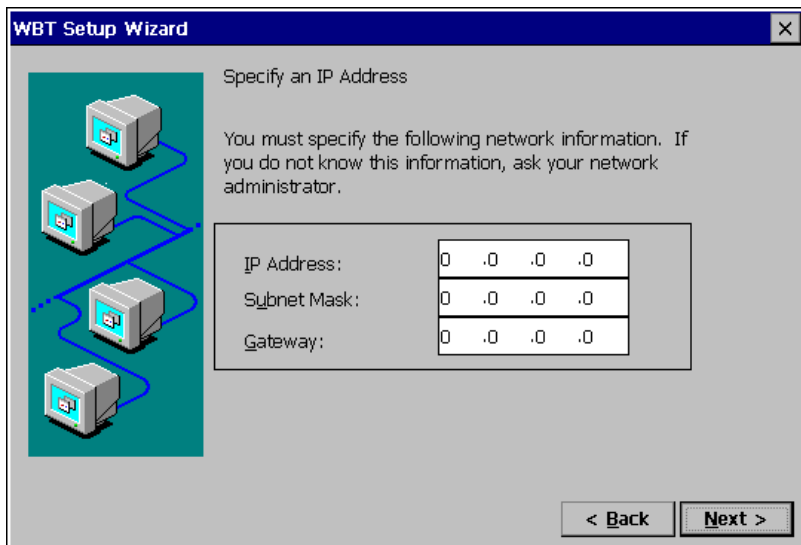
[Terminal Name]Type the name to identify this unit on the network.

Click [Next>].

Refer to step 6 if you select [Yes, use the IP information supplied by DHCP.]

Refer to step 5 if you select [No, I will enter static IP information.]

8. IP address page is displayed.



[IP Address] Type the IP address of the unit.

[Subnet Mask] Type the subnet mask of the network.

[Gateway] Type IP address of the Gateway machine if necessary.

Click [Next>] when finished.

9. DNS and WINS setting page is displayed.

WBT Setup Wizard

Fill in the following optional information to configure the terminal's name resolution.

Enable DNS

Default Domain Name:

Primary Server IP:

Secondary Server IP:

Enable WINS

Primary Server IP:

Secondary Server IP:

< Back Next >

This check box should be marked when DNS or WINS is used.

NOTE

- Skip the page by clicking [Next>] if DNS or WINS is not used.

If using DNS

Click the [Enable DNS] check box to activate this box.

[Default Domain Name] Type the default domain name.

[Primary Server IP] Type the DNS primary Server IP address.

[Secondary Server IP] Type the DNS secondary Server IP address.

If using WINS

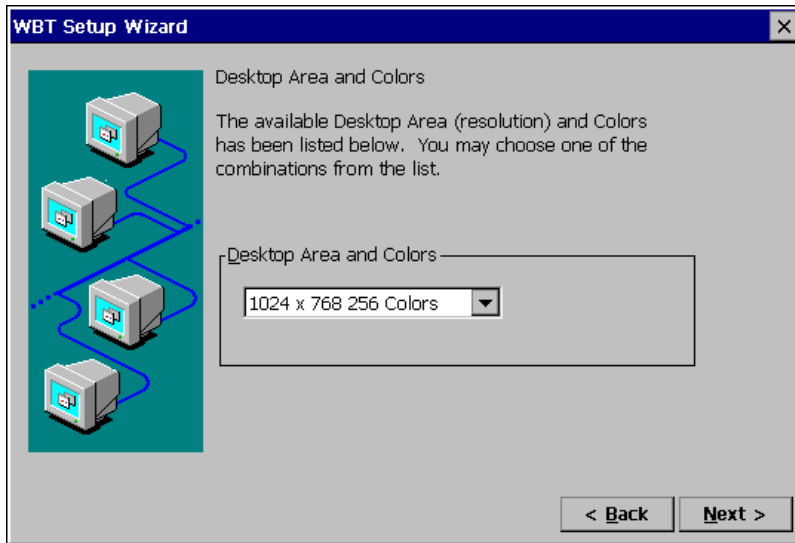
Click the [Enable WINS] check box to activate this box.

[Primary Server IP] Type the WINS primary Server IP address.

[Secondary Server IP] Type the WINS secondary Server IP address.

Click [Next>] when finished.

10. Desktop area resolution and color settings page is displayed.

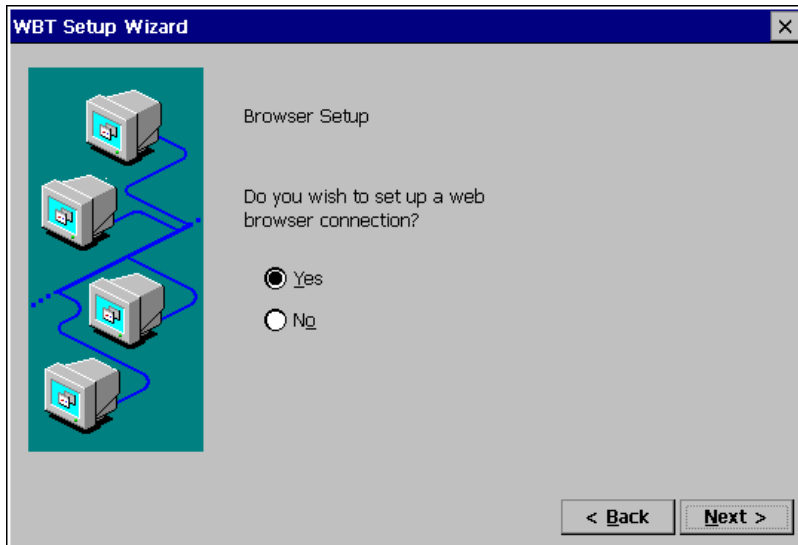


Select the preferable display mode from the two available modes:

- 1024 x 768 (256 colors)
- 1024 x 768 (65,536 colors)

Click [Next>] when finished.

11. Browser Setup page is displayed.



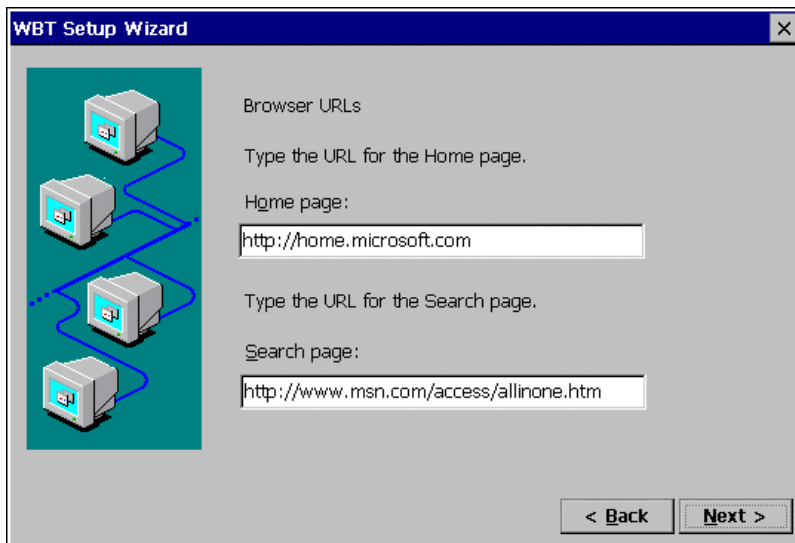
Select [Yes] if you are setting up a web browser connection.

Click [Next>] when finished.

Refer to step 9 if selecting [Yes].

Refer to step 13 if selecting [No].

12. Browser URLs page is displayed.

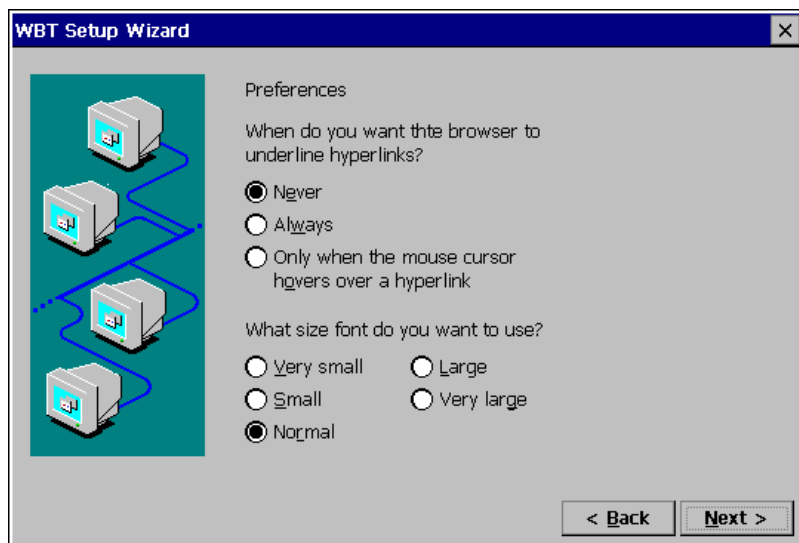


[Home Page:] Type the URL for the page to be displayed when Internet Explorer starts up or the “Home” button is clicked.

[Search Page:] Type the URL for the page to be displayed when the “Search” button is clicked.

Click [Next>] when finished.

13. Preferences page is displayed.



[When do you want the browser to underline hyperlinks?]

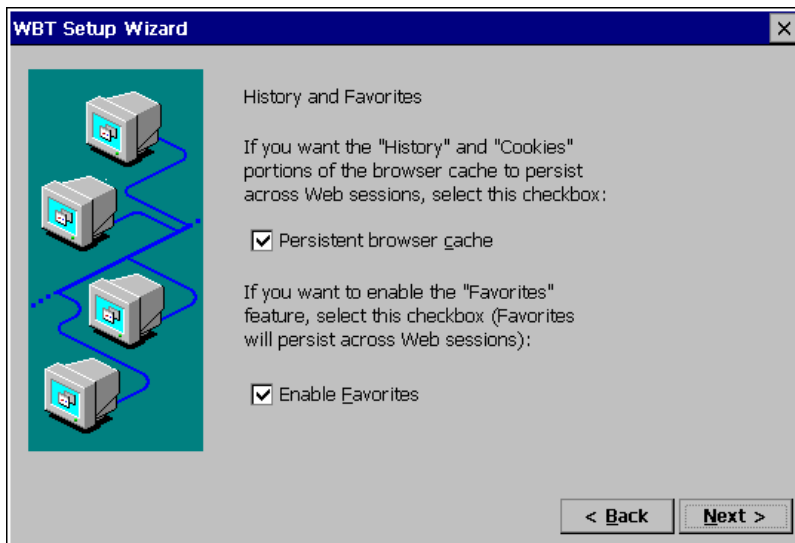
.....Select when you want the hyperlinks to be underlined.

[What size font do you want to use?]

.....Select the font size of the web page.

Click [Next>] when finished.

14. History and Favorites page is displayed.

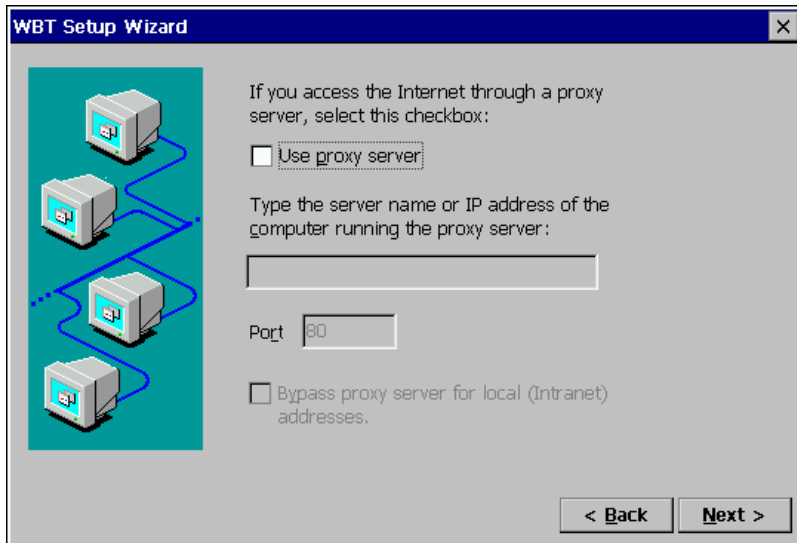


[Persistent browser cache]...Click the check box if you want the “History” and “Cookies” portions of the browser cache to persist across Web sessions.

[Enable Favorites].....Click the check box if you want to enable the “Favorites” feature. (Favorites will persist across Web sessions.)

Click [Next>] when finished.

15. Proxy server selection page is displayed.



[Use proxy server]..... Click the check box if you use proxy server for the web browser connection.

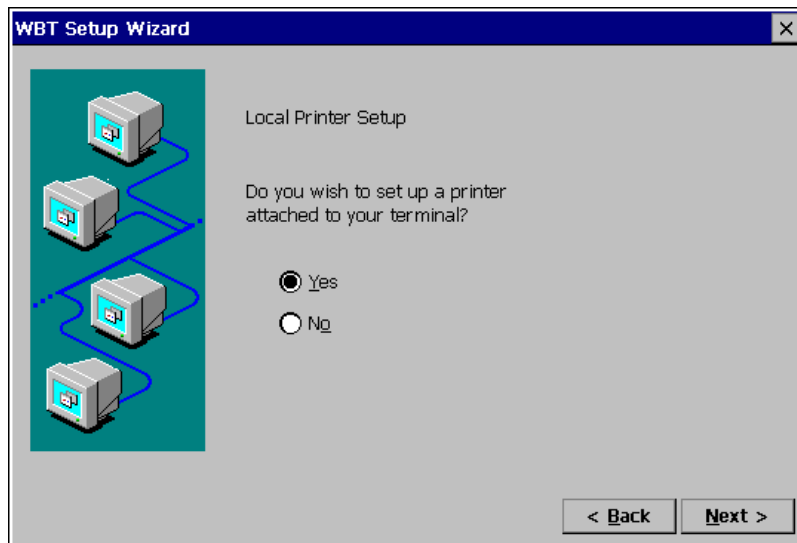
[Type the name of the computer running the proxy server:]
 Type the name of the computer running the proxy server.

[Port]..... Type the port number.

[Bypass proxy server for local (Intranet) addresses.]
 Click the check box if you do not use proxy server for local addresses.

Click [Next>] when finished.

16. Local Printer Setup page is displayed.



NOTE

- The following must be satisfied to install a local printer;
 - * When a printer is connected to the printer port or the serial connector of the 630L.
 - * The RDP protocol for connection to a WTS.
 - * Microsoft Windows 2000 Server / Advanced Server / Datacenter Server as the OS for the WTS
- A Local Printer mentioned here is a printer connected directly to the Parallel Connector of the unit.

Select [Yes] when using a local printer.

Select [No] in the following cases:

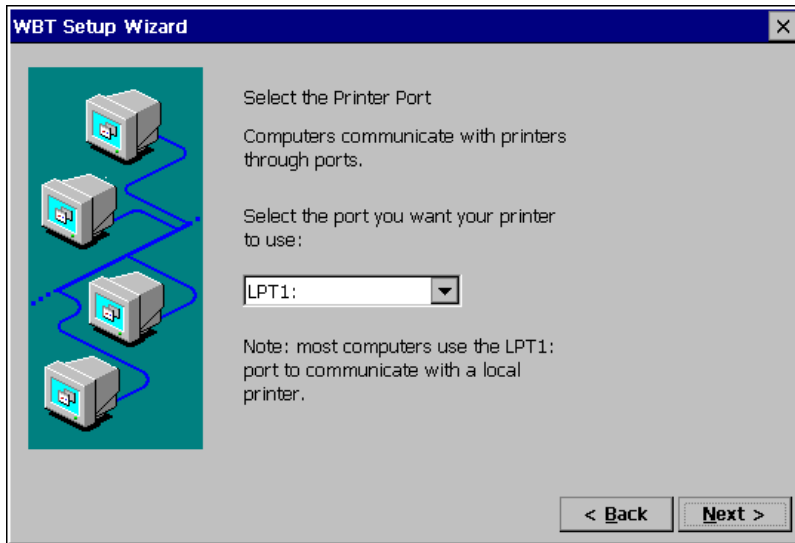
- * When not using a Local Printer
- * When using a ICA protocol for connection to a Server
- * When the OS of the Server is Windows NT Server 4.0 Terminal Server Edition

Click [Next>] when finished.

Refer to step 14 if selecting [Yes].

Refer to step 19 if selecting [No].

17. Printer port selection page is displayed.

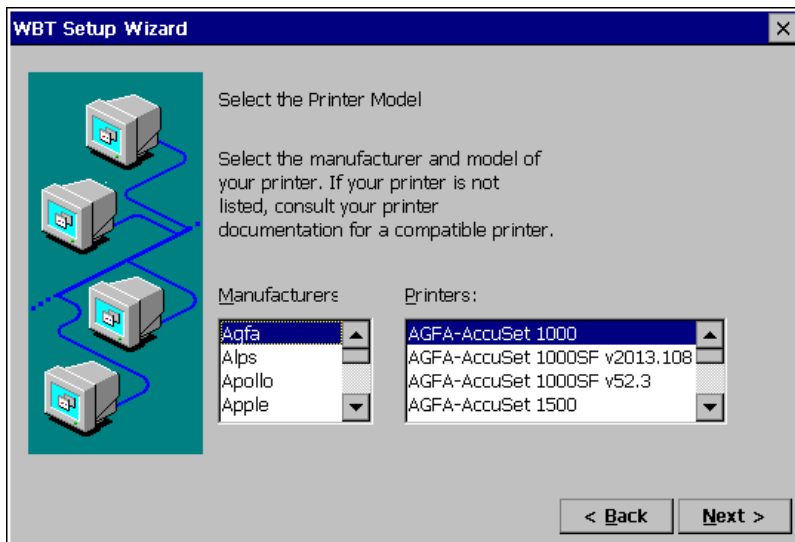


Select the printer port.

The 630L supports only LPT1 and COM1.

Click [Next>].

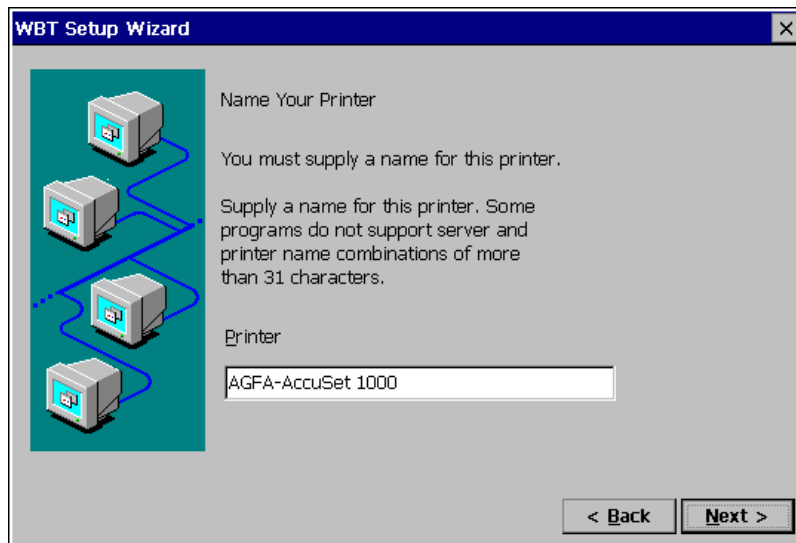
18. Printer model selection page is displayed.



Select a manufacturer and a model of your printer.

Click [Next>] when finished.

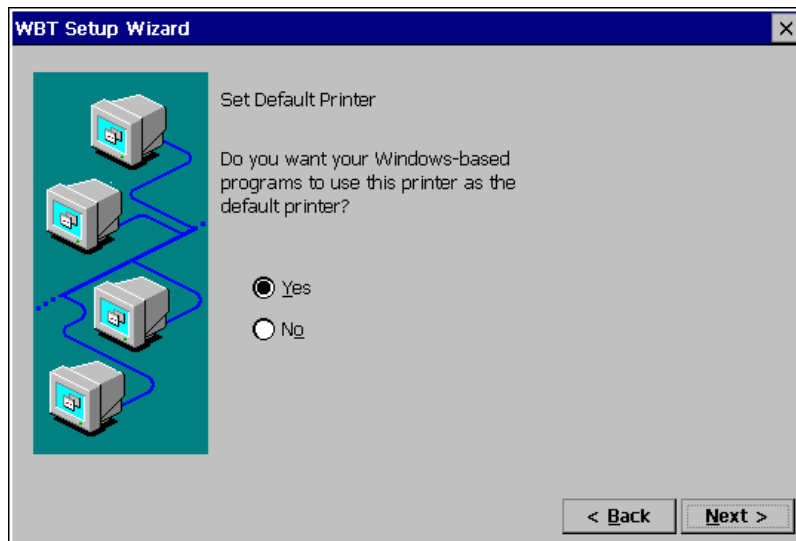
19. Printer name setting page is displayed.



Name the printer or use the indicated name. (Some programs do not support the Server and the printer name combinations of more than 31 characters.)

Click [Next>] when finished.

20. Default printer setting page is displayed.

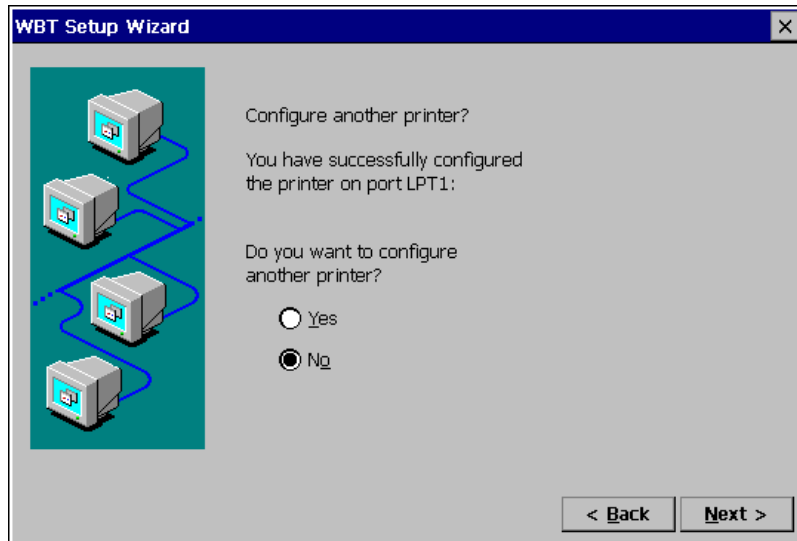


Select [Yes] to set this printer as the default printer.

Select [No] not to set this printer as the default printer.

Click [Next>].

21. Another printer configuration page is displayed.



Select [Yes] to configure another printer.

Select [No] to finish printer settings.

Click [Next>] when finished.

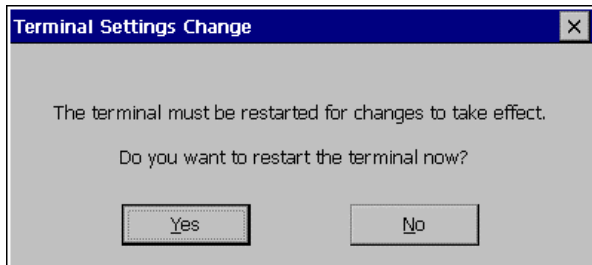
Refer to step 14 if selecting [Yes].

Refer to step 19 if selecting [No].

22. The last page of the “WBT Setup Wizard” is displayed.



Click [Finish] in the last page to display a “Terminal Settings change” dialog box.



(This dialog box is displayed only when there are changes in the settings.)

Click [Yes] to restart the 630L to activate the changes.

- Click [No] to finish the “WBT Setup Wizard” and display “Terminal Connection Manager” on the screen. The setting is not activated until the 630L is restarted.

This completes the 630L settings.

The “Terminal Connection Manager” dialog box will be displayed after restarting.

NOTE

- When you are connecting to the WTS with a LAN card, another installation for a LAN card connection must be completed. Please follow the next page.
- When you are connecting to the WTS with a modem, another installation for a modem connection (a dial-up connection) must be completed. Please follow the “3-3. Dial-up Connection”, page 36.

3-2. Connection with a LAN card

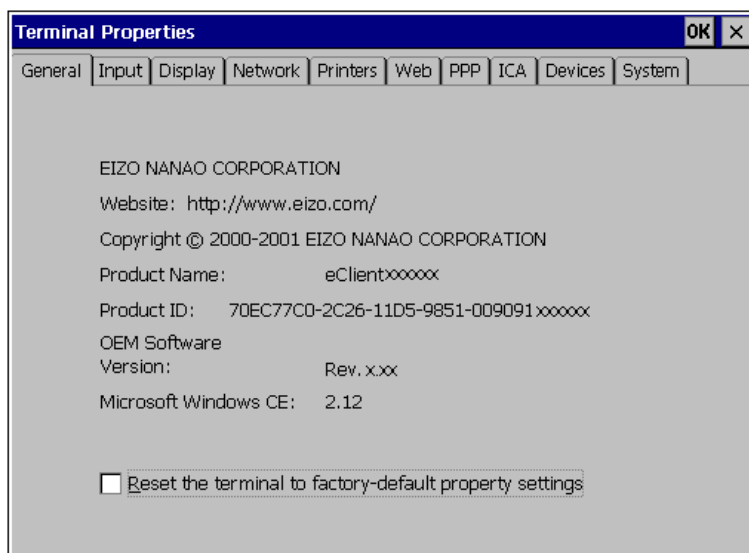
The following details the installation of a LANs connection.

NOTE

- Please remove the lid on the side of the 630L before connecting a LAN card, and then insert a LAN card to the card slot.
 - For use of an ethernet cable, a LAN card, or a LUCENT ORINOCO Waveland wireless LAN card: See page 29.
 - For use of a CISCO Aironet wireless LAN card: See page 33.

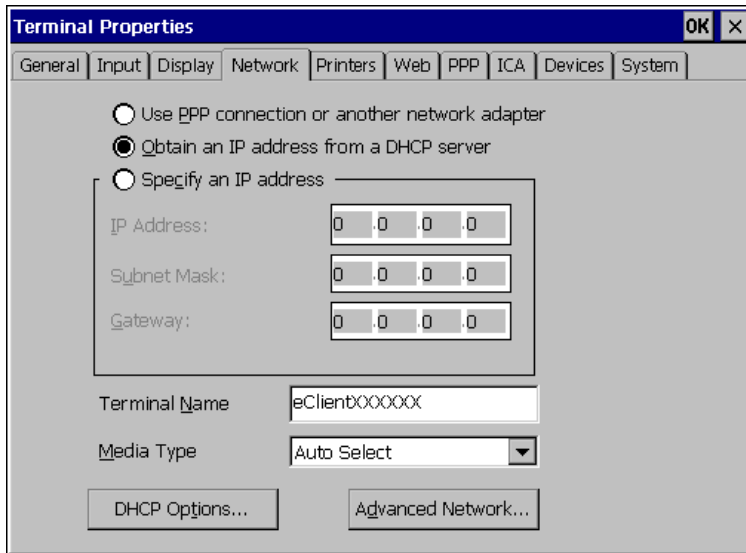
Connection with a LAN card other than Aironet LAN Card

1. Press “F2” key in the “Terminal Connection Manager”.
2. “Terminal Properties” is displayed.



Click the [Network] tab.

3. The “Network” page is displayed.



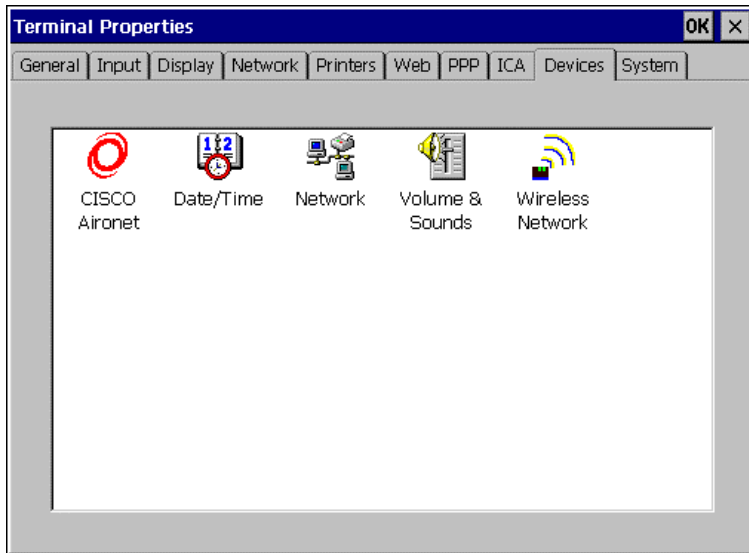
Select [Use PPP connection or another network adapter].

Click [Devices] tab.

NOTE

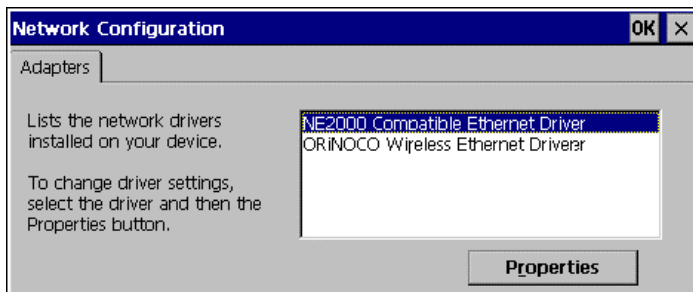
- [Use PPP connection or another network adapter] should be selected for using a LAN card. Otherwise, the LAN card may not work properly.

4. The “Devices” page is displayed.



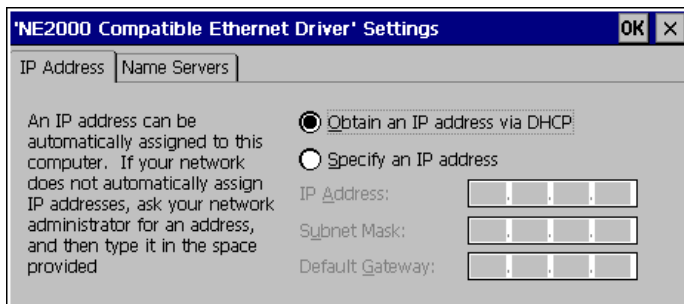
Double-click [Network].

5. “Network Configuration” is displayed.



Select a network driver for a LAN card.
Click [Properties].

6. The connected network adapter's properties are displayed.



[IP Address] tab

[Obtain an IP address via DHCP]

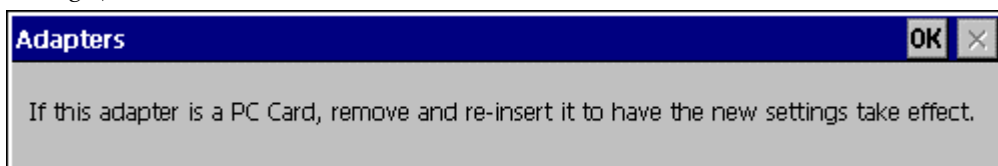
.....Select this to assign an IP address to the unit by a DHCP server.

[Specify an IP address]Select this to type an IP address.

[Name Server] tab.....Type an IP address for DNS or WINS.

Click [OK].

(The message below will be displayed. Please follow the message and complete the settings.)



Click [OK] to return to the “Network Configuration” dialog box.

Click [OK] to return to the “Terminal Properties” dialog box.

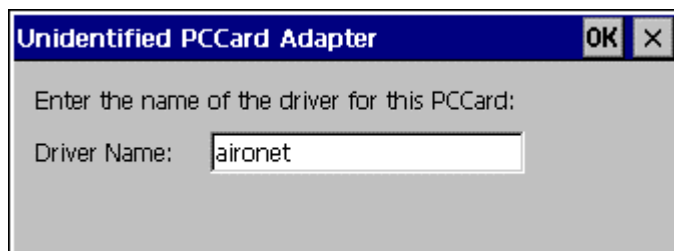
Click [OK] to save the settings and close the “Terminal Properties” dialog box.

NOTE

- If using the ORiNOCO/WaveLAN of the Agere Systems, double-click the [Wireless Network] icon and set the detailed settings as needed. Refer to the instruction of the LAN card for details.

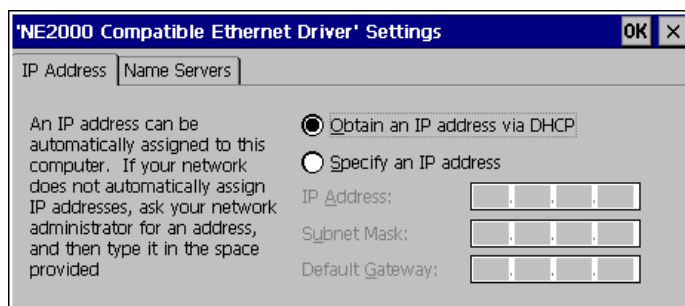
Connection with a Cisco Aironet

1. Insert the Aironet Card, and “Unidentified PC Card Adapter” is displayed.



Driver Name:..... Type “aironet”.
Click [OK] when finished.

2. ‘Aironet Wireless LAN Adapter’ settings page is displayed.



[IP Address] tab

[Obtain an IP address via DHCP]

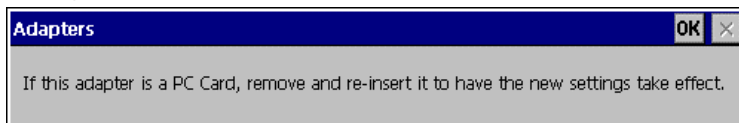
.....Select this to assign an IP address to the unit by a DHCP server.

[Specify an IP address]Select this to type an IP address.

[Name Server] tab.....Type an IP address for DNS or WINS.

Click [OK].

(The message below will be displayed. Please follow the message and complete the settings.)



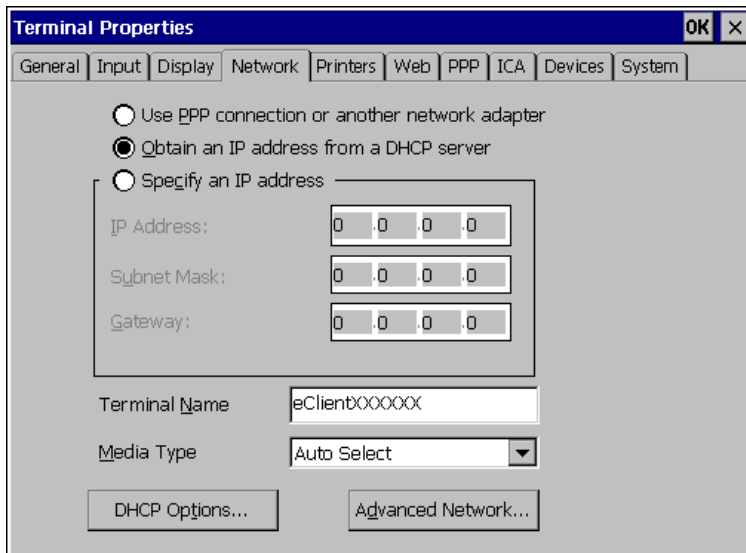
Click [OK] to return to the “Terminal Connection Manager” dialog box.

3. Press “F2” key in the “Terminal Connection Manager”.

4. “Terminal Properties” is displayed.

Click the [Network] tab.

5. The “Network” page is displayed.



Select [Use PPP connection or another network adapter].

Click [Devices] tab.

NOTE

- [Use PPP connection or another network adapter] should be selected for using a LAN card. Otherwise, the LAN card may not work properly.

NOTE

- Double-click the [CISCO Aironet] icon on the “Devices” tab and set the detailed utility as needed. Refer to the instruction of the LAN card for details.

Click [OK] to save the settings and close the “Terminal Properties” dialog box.

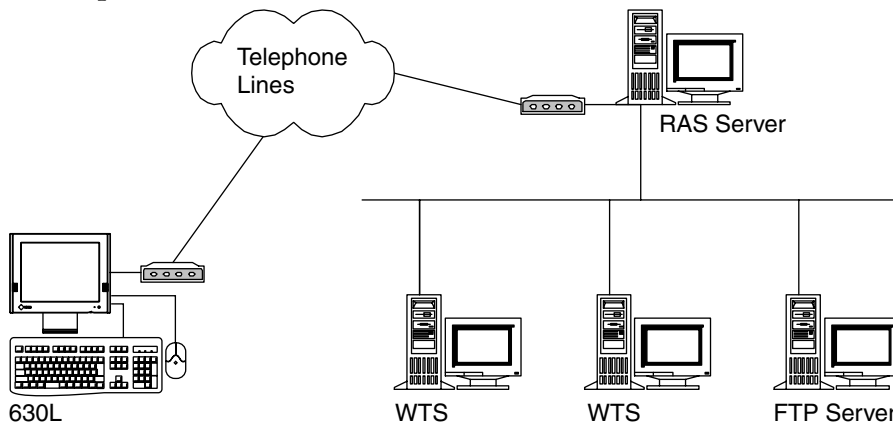
This completes the LAN card settings.

3-3. Dial-Up Connection

The following details the installation of a dial-up connection for RAS (Remote Access Service).

No restriction of the protocol is made for the “Dial-up connection”. To use a dial-up connection requires an RAS server in operation.

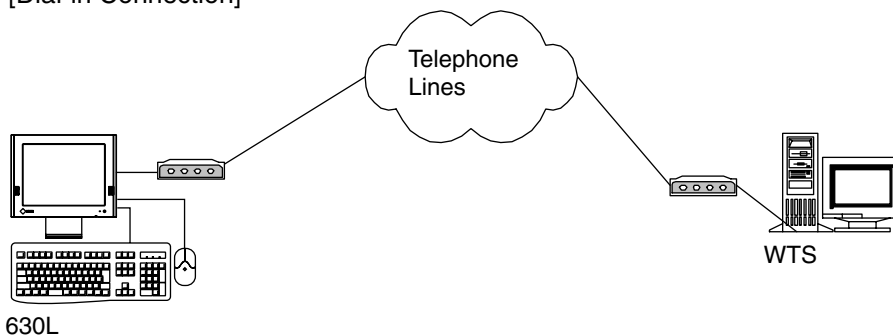
[Dial-up Connection]



NOTE

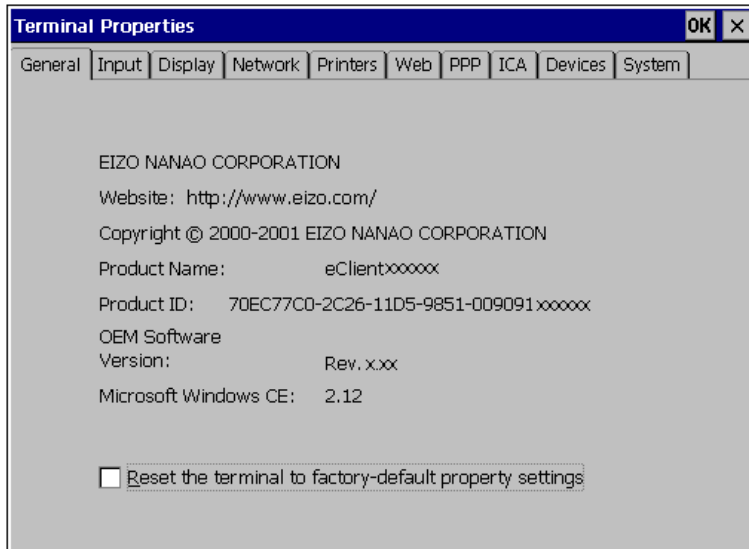
- Another type of connection using a modem, a dial-in connection, is available to connect to the WTS with an ICA protocol. Please refer to the page 49.

[Dial-in Connection]



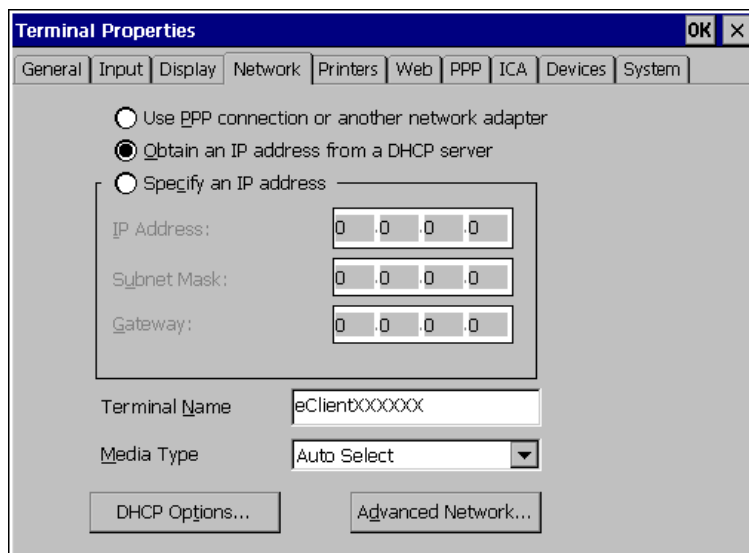
1. Press “F2” key in the “Terminal Connection Manager”.

2. “Terminal Properties” is displayed.



Click the [Network] tab.

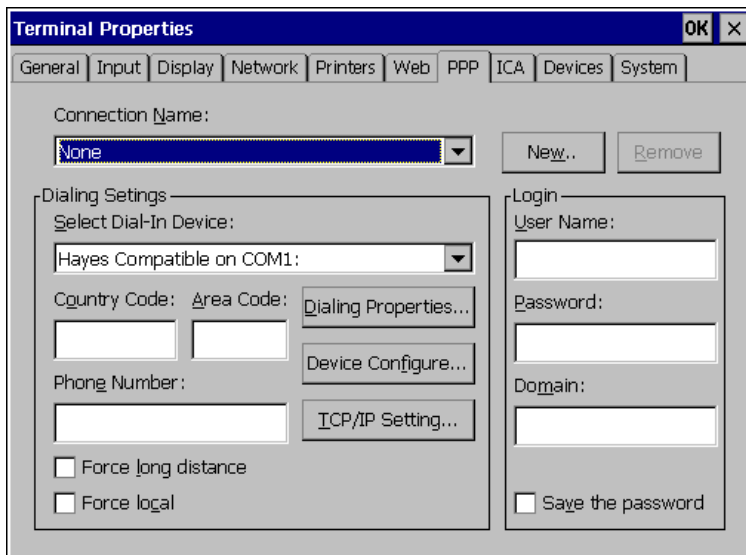
3. The network setting window is displayed.



Select [Use PPP connection or another network adapter].

Click [PPP] tab when finished.

4. The dial-up setting window is displayed.



NOTE

- Enter your information in the pertinent fields.
 - [Connection Name] Choose a connection name for a dial-up connection. ([None] indicates no connection name chosen.)
 - [New...] Click the button to create a new dial-up connection name.
 - “Create New Dial-Up Connection” dialog box is displayed.
 - Enter the name and click [OK].
 - [Remove] Delete the connection name displayed currently.
- [Dialing Settings]
 - [Select Dial-In Device] Choose a modem connecting device type.
 - [Country Code:], [Area Code:], [Phone Number]
 - Enter a country code, an area code, and a phone number for the connection name.
 - [Force long distance] Click here to use the country code, area code, and the phone number when connecting to the connection name.
 - [Force local] Click here to use only the phone number when connecting to the connection name. (In case the area code of the connection name is different from the present area code.)

[Dialing Properties...]

..... Click the button to set information of the sender.



[When dialing from:] Choose the sender's location.

[New...] Click this to add a new sender's location.
 "Create New Location" dialog box is displayed.
 Enter a new sender's location and click [OK].

[Remove] Remove the current sender's location.

[Local Settings are...]

[The local area code is:], [The local country code is:]

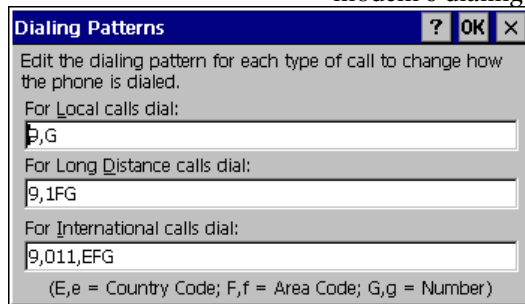
..... Enter the area code and the country code of the sender's location.

[Dial using:] Choose your using dial from;
 [Tone] / [Pulse]

[Disable call waiting by dialing:]

..... Check the box and enter the number to disable call waiting by dialing.

[Dialing Patterns...] Click the button and use this group box to set your modem's dialing patterns.



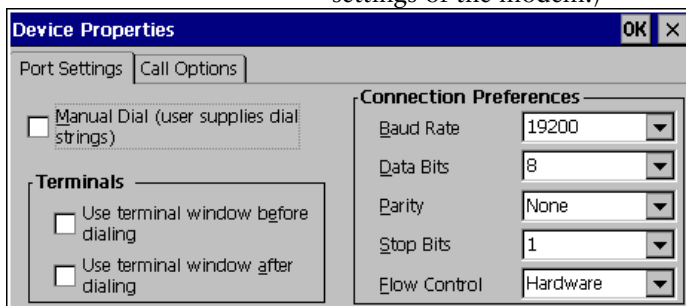
Click [OK] when finished.

Click [OK] of the [Dialing Properties] when finished.

"Terminal Properties" is displayed.

[Device Configure...]

..... Click the button the detailed settings of the modem.
(Please refer to the instruction manual of a modem for settings of the modem.)



[Port Settings] tab

[Manual Dial (user supplies dial strings)]

..... Click this box to set up for manual dialing.

[Terminals]

[Use terminal window before / after Dialing]

..... Click this box to record terminal window information before or after dialing.

[Connection Preferences]

[Baud Rate] Set data transmission rate from 110 to 115,200 bps.

[Data Bits] Set data bits.

[Parity] Set enabling to check the data's transmission.

[Stop Bits] Set length of the Stop Bits.

[Flow Control] Set Flow Control.

[Call Option] tab

[Cancel the call if not connected within]

..... Click the box and set the intervals to the right box before canceling the connection in case of connection failure.

[Wait for dial tone before dialing]

..... Click to dial after dial tone.

[Wait for credit card tone]

..... Click the box and set the intervals before canceling the connection in use of a credit card for dialing.

[Extra Settings (Special modem commands may be inserted into the dial strings)]

..... Enter a special modem command if required.

Click [OK] on [Device Properties] when finished. "Terminal Properties" will be displayed.

NOTE

- When changing settings in the [Device Properties], click the [Call Option] tab before clicking [OK] to close the window.

[TCP/IP Settings...]

Click the button to set the TCP/IP settings of the WTS.

[Use server-assigned IP address]

..... Click the box to use a server-assigned IP address.

[Specify an IP address] Enter a provided IP address.

[Use server-assigned DNS or WINS server IP address]

..... Click the box to use a server-assigned DNS or WINS server IP address.

[Specify DNS or WINS server IP address]

..... Enter a DNS or WINS server IP address provided.

[Primary DNS], [Secondary DNS]
.....Enter IP address of the primary DNS and IP address of the secondary DNS.

[Primary WINS], [Secondary WINS]
.....Enter IP address of the primary WINS and IP address of the secondary WINS.

[Use software compression]
.....Click to use software compression.

[Use IP headr compression]
.....Click to IP header compression.

[Use default gateway]Click to use the default Gateway.

Click [OK] in the [TCP/IP Settings] when finished.

“Terminal Properties” is displayed.

[User’s Name], [Password], [Domain]
.....Enter your information in the pertinent fields. If you do not know the information, contact your system administrator.

[Save the password]Click to save the password.

Click [OK] in the “Terminal Properties” when finished.

The “Terminal Properties” saves the settings and close.

This completes the dial-up connection settings.

A small window will be displayed on the right bottom of the window if the settings are successfully installed.



4. ADDING & CHANGING A CONNECTION NAME

This chapter shows how to add, delete, and modify connection names to a WTS. All the settings are managed in the “Terminal Connection Manager”.

4-1. Adding a Connection Name

These are settings for the Server connection.

Each protocol has different settings. Please install the appropriate settings.

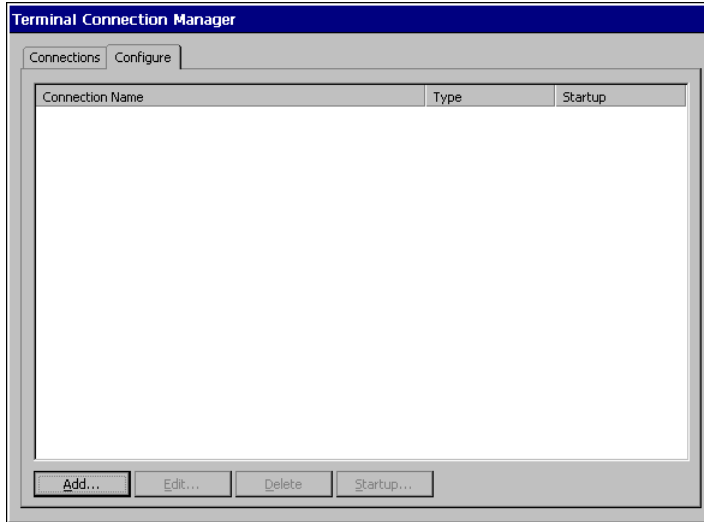
- In use of the Microsoft Remote Desktop Client (RDP) page 44
- In use of the Citrix ICA Client (ICA) page 49

NOTE

- Please install Citrix MetaFrame server into the Server when using the ICA protocol.

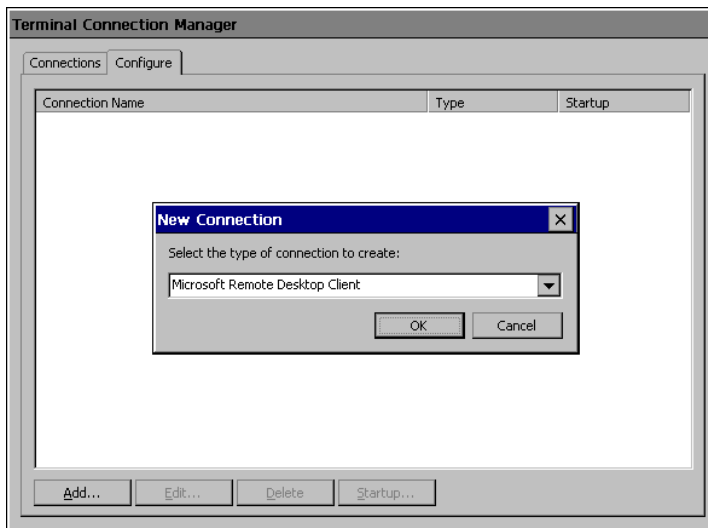
In Use of RDP Protocol

1. Display [Terminal Connection Manager].



Click the [Configure] tab and [Add...] to set the connection information of the WTS.

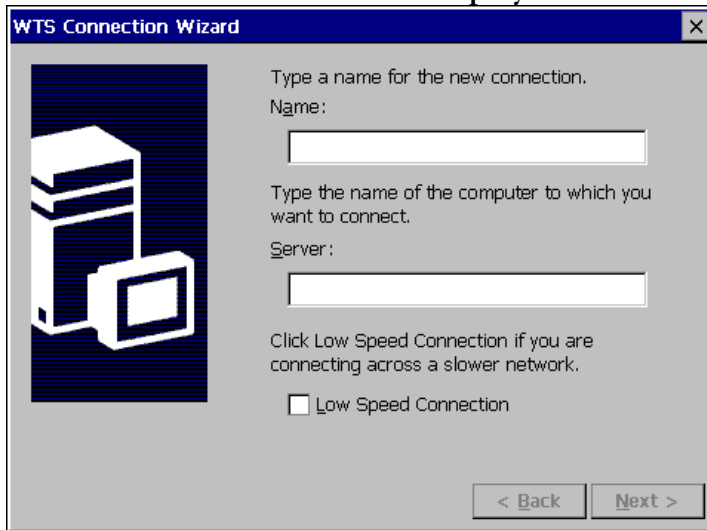
2. Protocol selection dialog box is displayed.



Select the “Microsoft Remote Desktop Client” (RDP)

Click [OK] when finished.

3. “WTS Connection Wizard” is displayed.



- [Name] Type the connection name to the Server. Name the connection to differentiate the Server from others.
- [Server] Type the IP address or the name of the Server, or WINS setting is necessary when the name is typed.
- [Low Speed Connection] Click the check box when making a low speed connection. Enable this function when connecting through a Remote Access Service using a modem that takes time to receive data from the Server.

Click [Next>] when finished.

4. Automatic Logon setting page is displayed.



Type the name, the password, and the domain name of the WTS beforehand to enable an Automatic Logon to the WTS after connecting.

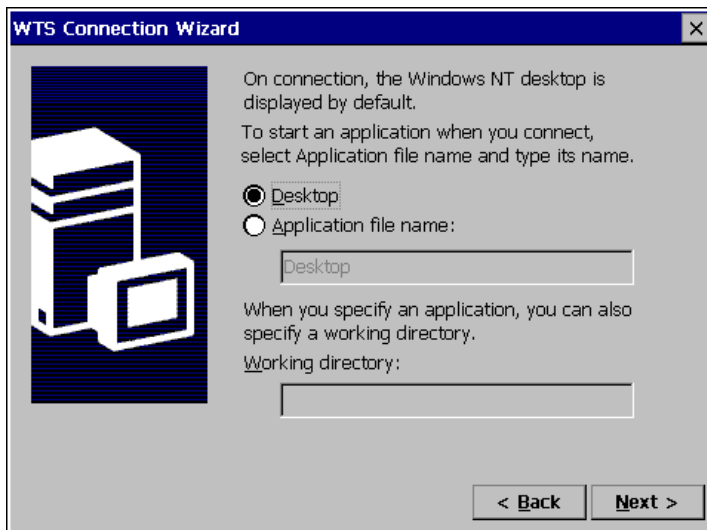
NOTE

- If an Automatic Logon is not needed, click [Next>].

Click the check box of the [Automatic Logon] to enable the item.
[Username] Type the name to connect the WTS.
[Password] Type the password for the user name.
[Domain] Type the domain name.

Click [Next>] when finished.

5. Specifying an application to run after connecting to a WTS is displayed.



Select whether to display the Windows desktop screen or start up an application.
 [Desktop].....Select this to start the Windows desktop screen when you connect.

[Application file name:]Select this to start an application when you connect.
 [Working directory:].....Input the name of the application and the working directory if necessary.

NOTE

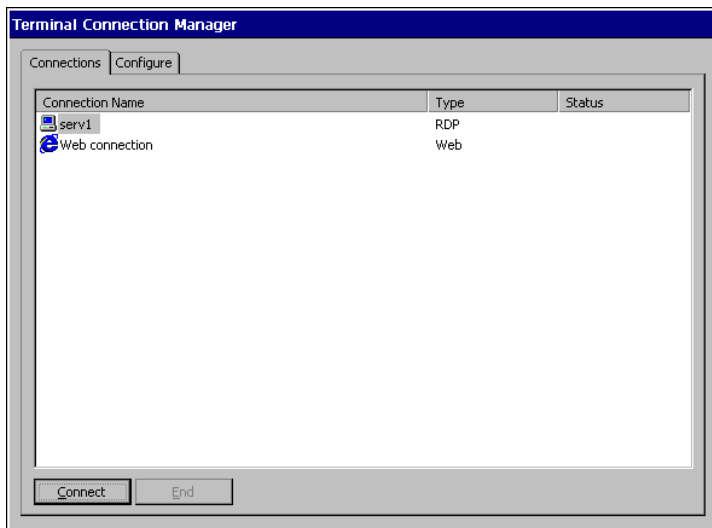
- When the [Application file name:] and the [Working Directory] are named, only the specified application will be started after logging on. In this case, closing the application logs off and disconnects from the WTS.

Click [Next>] when finished.

6. The last page of the “WTS Connection Wizard” is displayed on the screen.



Click [Finish] to return to the “Terminal Connection Manager” dialog box. The registered connection name is displayed in the “Terminal Connection Manager” dialog box.



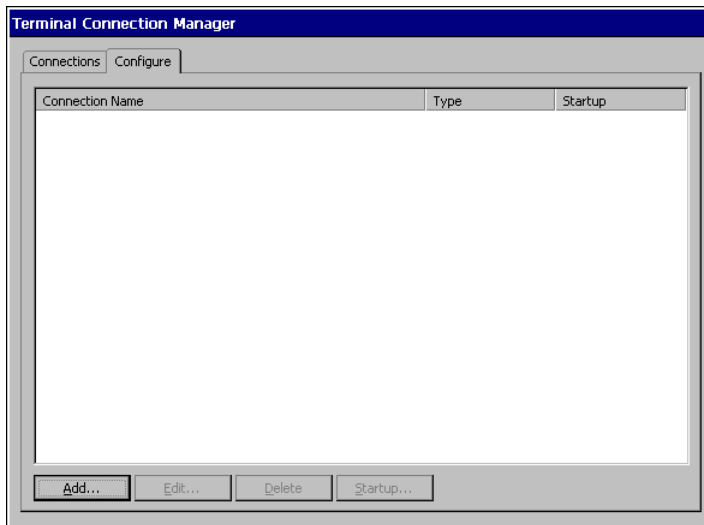
This completes the setup of the 630L for connection to a WTS with the RDP protocol.

NOTE

- Please repeat step 1 to 6 to entry more than two kinds of connections.

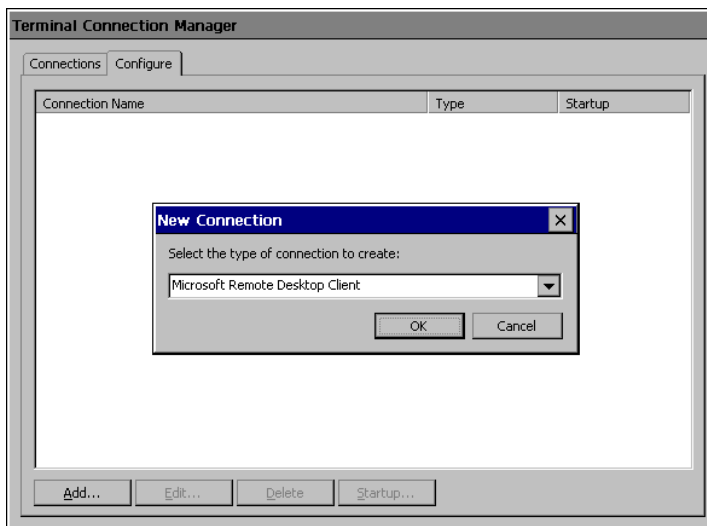
In Use of the ICA protocol

1. Click the [Configure] tab.



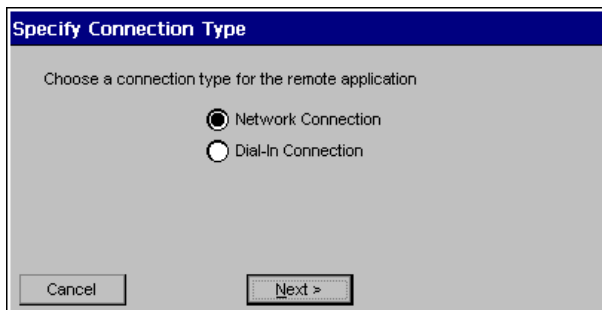
Click [Add...].

2. “New Connection” dialog box is displayed on the screen.



Select “Citrix ICA Client” (ICA).
Click [OK] when finished.

3. “Specify Connection Type” dialog box is displayed.



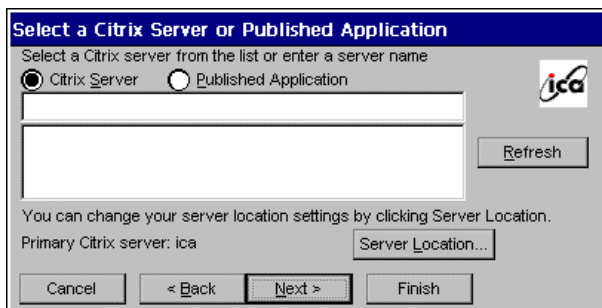
[Network Connection].....Select for network connection.
 [Dial-In Connection].....Select for dial-in connection.

Click [Next>] when finished.

Go to step 4 when selecting [Network Connection].

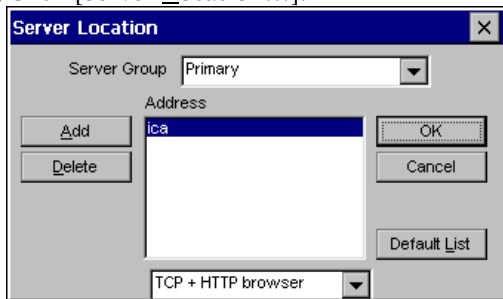
Go to step 5 when selecting [Dial-In Connection].

4. Citrix Server or published application selection page is displayed.



1) Select [Citrix Server (WTS)] or [Published Application].

2) Click [Server Location...].



- [Server Group] Select the WTS Group to connect. (A WTS Group consists of [Primary], [Backup 1], and [Backup 2]. The WTS will be searched in order of [Primary], [Backup 1], and [Backup 2].
- [Add] Add another Server address. Type the Server Name or IP address. (The typed Server Name or IP address will be shown in the [Address] list.
- [Delete] Delete the selected WTS from the [Address] list.
- [Default List] Revert the state of the [Address] list to the saved one.
- [Address] The added WTS IP address appears.

Click the drop-down list box below [Address]. Select the appropriate WTS protocol from the list.

- [TCP browser] Citrix MetaFrame uses UDP protocol to search for the WTS. Select this when using a UDP protocol.
- [TCP + HTTP browser] .. Select this when not using a UDP because of the firewall in your network environment.
- [SSL + HTTPS browser]
..... This is not available with 630L.

Click [OK] to return to the previous page and save the adjustments.

3) Click [Refresh] to refresh the list to the newest information.

4) Select a WTS or a published application from the list.

NOTE

- Published applications are specific application set by a system administrator. When connected, you are presented with the application itself.

Click [Next>].

5. “Dial-In Devices” dialog box is displayed.



NOTE

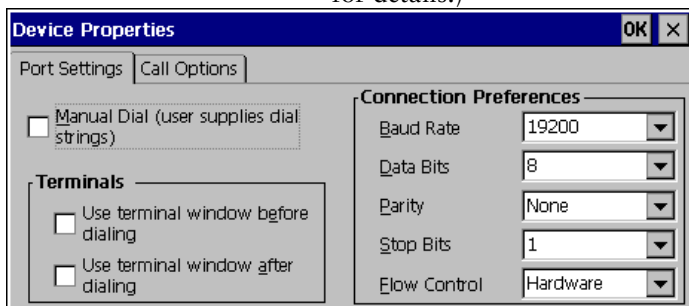
- Enter your information in the pertinent fields.
- A dial-in connection is not available during a dial-up connection. Disconnect the dial-up connection before making dial-in connection.

[Dial-In Device:]Select the device name connected to the modem.

[Phone Number]Enter a country code, an area code, and a phone number for the connection.

[Use Tone Dialing].....Click to use tone dialing.

[Configure]Click the button the detailed settings of the modem. (Please refer to the instruction manual of the modem for details.)



[Port Settings] tab

[Manual Dial (user supplies dial strings)]Click this box to set up for manual dialing.

[Terminals]
 [Use terminal window before dialing]Click this box to record terminal window information before dialing.

[Use terminal window after dialing]Click this box to record terminal window information after dialing.

[Connection Preference]

[Baud Rate] Set the data transmission rate from 110 to 115,200.

[Data Bits] Set the data bits.

[Parity] Set to check the data's appropriate transmission.

[Stop Bits] Set the length of the Stop Bits.

[Flow Control] Set Flow Control.

[Call Option] tab

[Cancel the call if not connected within]

..... Click the box and type the interval to the right box before canceling the connection in case of connection failure.

[Wait for dial tone before dialing]

..... Click to dial after dial tone.

[Wait for credit card tone]

..... Click to set the intervals before canceling the connection using a credit card.

[Extra Settings (Special modem commands may be inserted into the dial strings)]

..... Enter a special modem command if needed.

Click [OK] on [Device Properties] when finished. The dialog box saves the settings and closes.

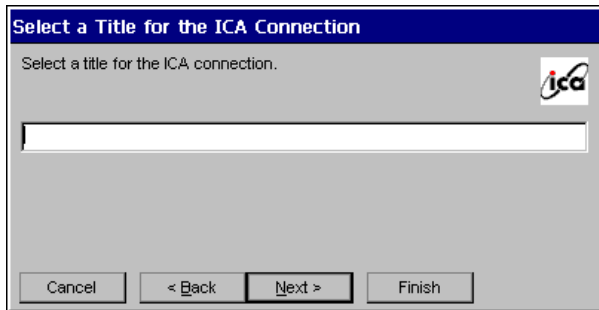
- Click the [Close] button to cancel the settings.

NOTE

- When changing settings in the [Device Properties], click the [Call Option] tab before clicking [OK] to close the window.

Click [Next>].

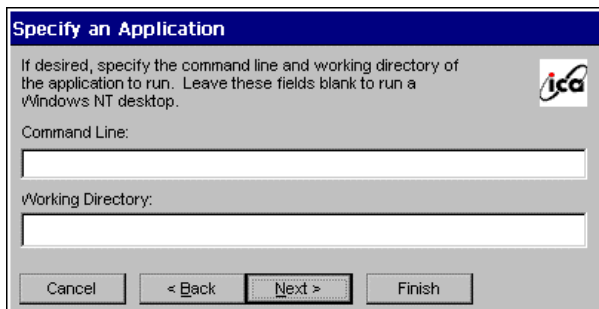
6. A title for the ICA connection page is displayed.



Type a connection name of the WTS.

Click [Next].

7. An application selection page is displayed.



Specify the command line and the working directory of an application to operate.

NOTE

- Leave these fields blank and click [Next>] to run a Windows desktop.

[Command Line:]Type the application name and the path.

[Working Directory:]Type the working directory for the application.

NOTE

- When the [Command Line] and the [Working Directory] are named, only the specified application will be started after logging on. In this case, closing the application logs off from the WTS.

Click [Next>] when finished.

8. Automatic logon settings page is displayed.

Type the name, the password, and the domain name of the WTS beforehand to enable an Automatic logon to the WTS after connecting.

NOTE

- If an Automatic Logon is not needed, click [Next.]

[User Name:]Type the name to automatically connect the WTS.

[Password:]Type the password for the user name.

[Domain:]Type the domain name.

Click [Next>] when finished.

9. Colors selection page is displayed.

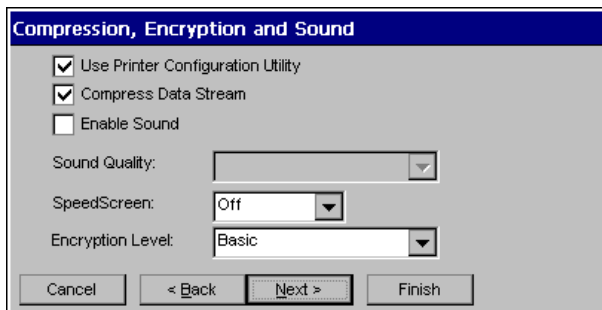
Set the colors of the WTS' screen.

NOTE

- Thousands can be selected only when the color setting of the 630L is 65536 colors.

Click [Next>] when finished.

10. Compression, encryption, and sound settings page is displayed.



[Use Printer Configuration Utility]

.....Click the check box to install the printer at the [ICA Client Printer Configurations].

[Compress Data Stream].....Click the check box to reduce the amount of data transferred between the WTS and the 630L, which can increase performance. (If you have sufficient bandwidth, leave compression off to conserve processing power on the WTS.)

[Enable Sound:]Click the check box to enable sound of 630L.

[Sound Quality:]Select the sound quality of the 630L.

High: Please use this when there is a surplus in the network bandwidth, and sound quality is the first priority.

Middle: Sound quality becomes rather low, but this is adequate to most network environment. It is recommended to use [Middle] for LAN connection.

Low: This is adequate to limited bandwidth. Please use this for dial-up connection

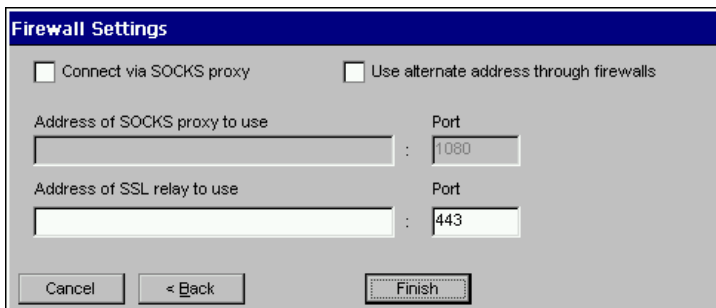
[SpeedScreen:].....Select the speed at which the keyboard and mouse perform on the screen.

Select [On] when connecting to the WTS with a dial-up connection. Select [Off] when connecting to the WTS with a LAN connection. Select [Auto] to automatically switch the speed depending on the network environment.

[Encryption Level:]Encryption level can be selected from RC5 (128 bit - Login Only), basic, RC 5 (40 bit), RC5 (56 bit), RC5 (128 bit). The level becomes higher as the bit gains. RC5 (128 bit - Login Only) indicates the 128 bit level security available only at logon.

Click [Next>] when finished.

11. Firewall settings page is displayed.



NOTE

- These settings are effective when connecting to the WTS through internet.
- If no change is made, the settings under the [Firewall settings] of [Global ICA Client Settings] will be applied (refer to page 89 for details).

[Use alternate address for firewall connection]

.....Click the check box to connect to the WTS through the Firewall.

Set the connection to the WTS through the SOCKS proxy server when the SOCKS proxy server is working to limit the access to the WTS.

Click the [Connect via SOCKS proxy] check box to enable this setting.

[Address of SOCKS proxy to use / Port]

.....Type the IP address of the SOCKS proxy server and the port number of the proxy server.

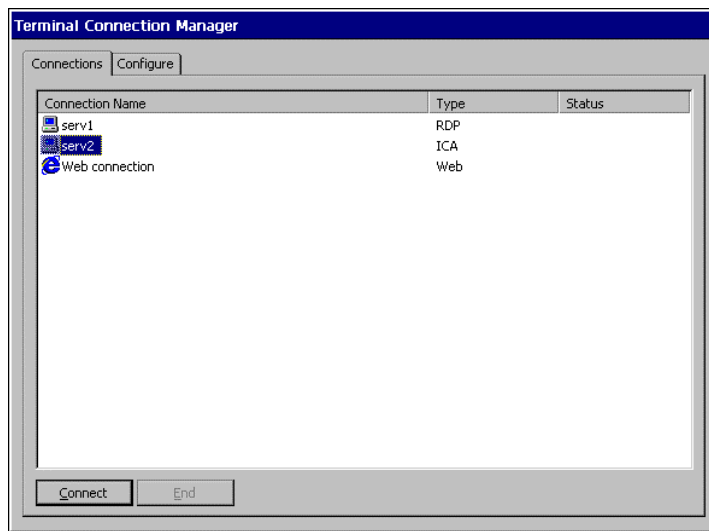
[Address of SSL relay to use / Port]

.....These are not available with 630L.

Click [Finish] when finished.

[Terminal Connection Manager] is displayed.

The registered connection name is displayed in the “Terminal Connection Manager” dialog box.



This completes the setup of the 630L for connection to a Server with the ICA protocol.

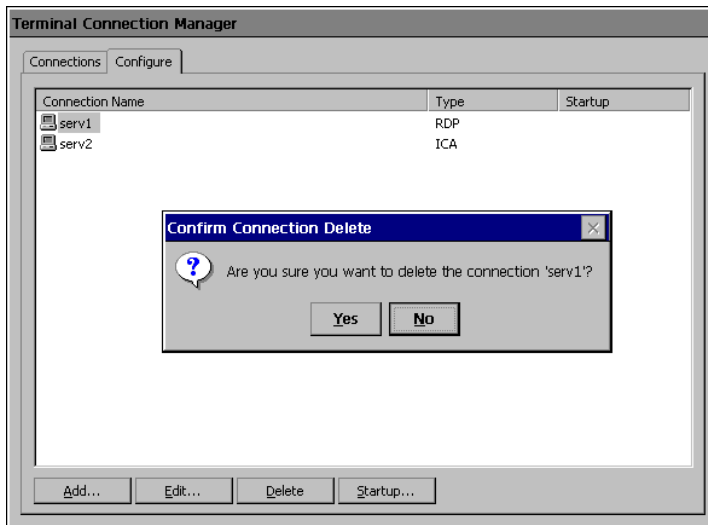
NOTE

- Please repeat the step 1 to 11 when you adding another connection name.

4-2. Deleting a Connection

This function deletes an existing Connection Name.

1. Display the “Terminal Connection Manager” dialog box.
2. Click the [Configure] Tab.
3. Select the Connection Name you want to delete.
4. Click [Delete].
5. “Confirm Connection Delete” dialog box is displayed.



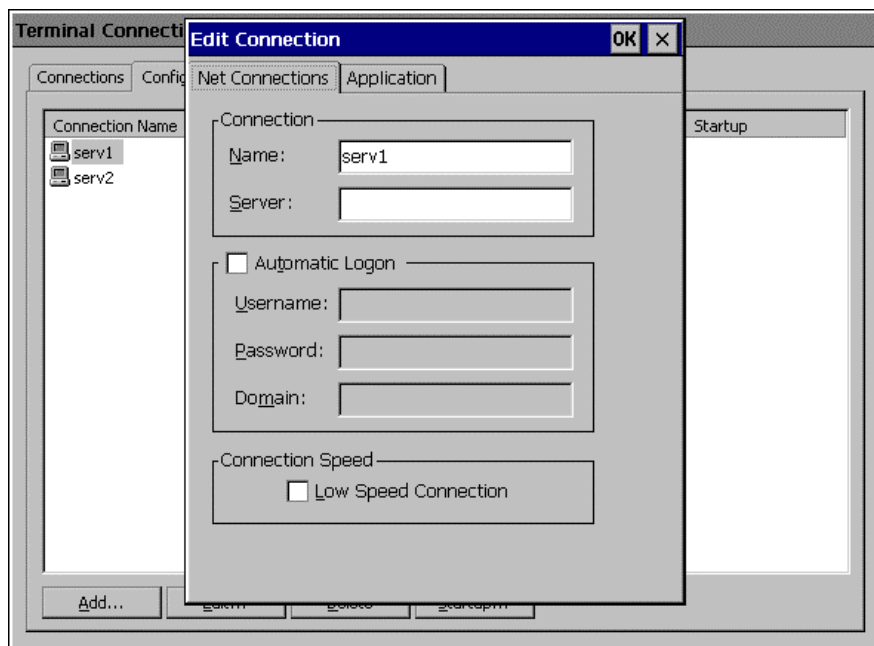
Click [Yes] to delete the information of the selected WTS.

4-3. Editing a Connection

This function modifies attributes of the WTS connections.

1. Display the “Terminal Connection Manager” dialog box.
2. Click the [Configure] Tab.
3. Select the connection you want to modify.
4. Click [Edit...].
5. [Edit Connection] dialog box or [Edit Connection Details] is displayed.

- For RDP Connection



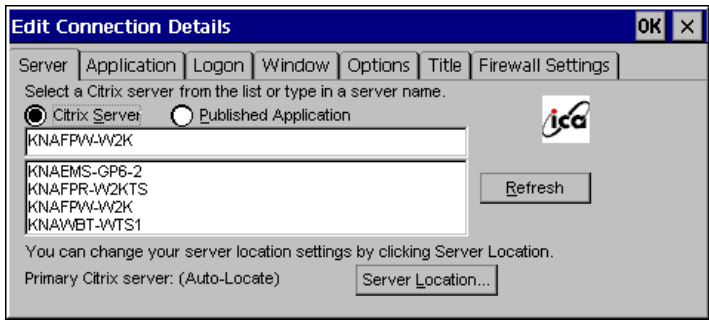
(Please refer to pages 44 to 48 for each setting.)

[Net Connections] tab Change connection settings to a WTS.

[Application] tab Change a description of an application on a startup.

Click [OK] to enable the settings.

- For ICA Connection



(Please refer to pages 49 to 58 for each setting.)

[Server/Dial-In] tab Either Server or Dial-In tab is displayed depending on the connection type.

[Server] Tab (for LAN connection)

To change the WTS / the public application to use

[Dial-In] Tab (for Dial-In connection)

To change settings of the Dial-In connection

[Application] tab To change a description of an application to run

[Logon] tab To set/cancel Automatic Logon

[Windows] tab To set the colors of the WTS screen

[Options] tab To set/cancel the printer after connecting the WTS, compression of data, the speed at which the keyboard and mouse perform on the screen, and encryption level setting.

[Title] tab To change the connection name

[Firewall Settings] tab To change the settings on the Firewall and the proxy WTS

If no change is made in this settings, the settings under the [Firewall settings] of “Global ICA Client Settings” will be applied (refer to page 89 for details).

Click [OK] to enable the settings.

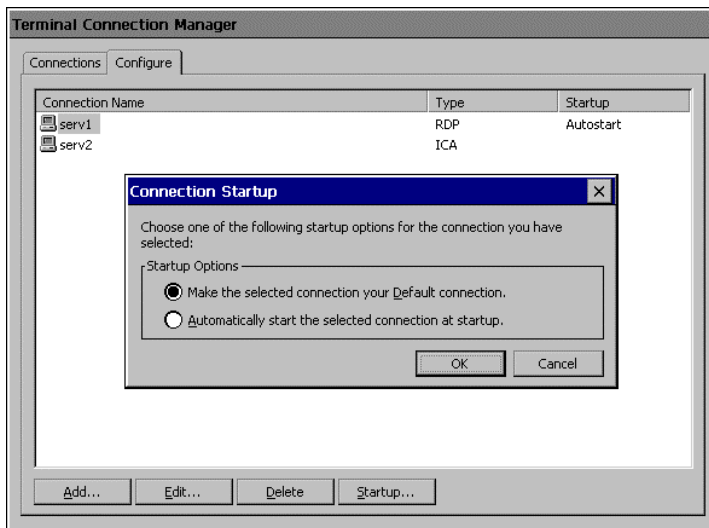
NOTE

- When changing settings in the Dial-In connection, click and show the [Call Option] tab of [Device Properties] of the [Dial-In] tab before clicking [OK] to close the window.

4-4. Setting an Autostart Connection

This function configures a connection to start automatically each time the 630L is turned on. (This function is available for a LAN connection.)

1. Display the “Terminal Connection Manager” dialog box.
2. Click the [Configure] tab.
3. Select the desired Connection Name for Autostart Connection.
4. Click [Startup...]
5. “Connection Startup” dialog box is displayed.



Select [Automatically start the selected connection at startup.]

Click [OK] to save the setting. The setting is effective from the next startup.

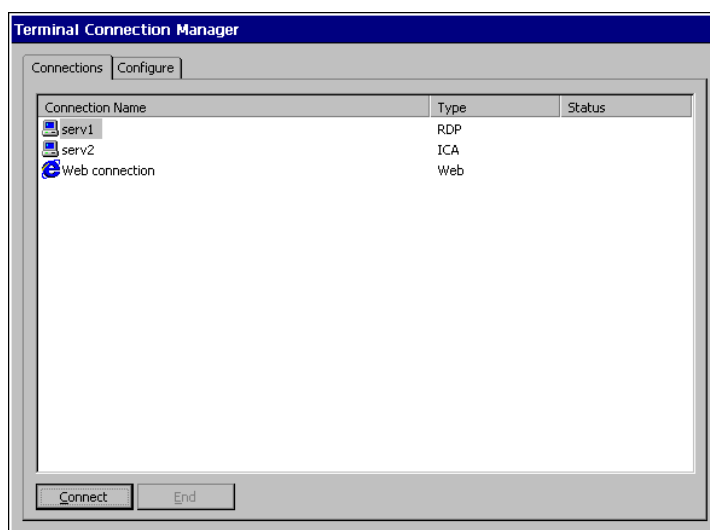
5. LOGON & LOGOFF

This chapter shows how to log on to and log off from a WTS.

5-1. Logon to a WTS / Logoff from a WTS

Logon to a WTS

1. Turn on the 630L.
2. “Terminal Connection Manager” dialog box is displayed.



Please follow the direction depending on the environment of the 630L.

- (1) To connect and log on to a WTS through local network:
Go to step 3.
- (2) To connect and log on to a WTS with dial-up connection:
Click an active button of a small window on the right bottom of the screen.



A dial-up connection is made by clicking the button.
Check the clock's running, and go to step 3.

- (3) To connect and log on to a WTS with dial-in connection:
Go to step 3. (Ask your system administrator for an installation of a dial-up connection.)

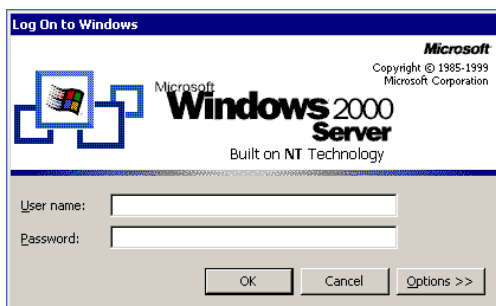
3. Click the [Connections] tab.

Select the desired Connection Name and click [Connect] (or simply double click the connection name).

NOTE

- To connect to the default connection WTS set in the "Terminal Connection Manager" dialog box, press [Ctrl] + [Alt] + [Home] keys. (See page 64 on a default connection server setting.)

4. The 630L connects to the WTS and the "Log On to Windows" dialog box is displayed.



Type your [User name] and [Password], and click [OK] to log on to the WTS.
After logging on, 630L allows you to use Microsoft Windows applications running on WTS.

NOTE

- If an Automatic Logon connection has been defined, this menu will not be displayed upon connection. (For details, please refer to [Automatic Logon] on page 46, 55.)

Multi Session

You can log on to the WTS with the several connection names, and switch the active sessions.

• Logon

- 1.** Log on with a Connection Name, as following the previous steps.
- 2.** Press [Ctrl] + [Alt] + [End] keys after logon.
- 3.** “Terminal Connection Manager” is displayed.
Select another Connection Name to log on to, and click [Connect]. (Or double click the connection name.)
- 4.** “Log On to Windows” dialog box is displayed after connecting to the WTS.
Type your [User name] and [Password], and click [OK] to log on to the WTS.
(Repeat the step 2 to 4 to log on to another connection name.)

• Switching the Active Session of the WTS

Press [Ctrl] + [Alt] + [UP ARROW] key / [DOWN ARROW] key to switch the active session.

NOTE

- The multi session is not available on a dial-in connection.

Logoff from the WTS

If your 630L starts its operation with a desktop

1. Log off from the WTS.

- (1) Close all applications.
- (2) Select [Start] on the taskbar.
- (3) Microsoft Windows NT Server 4.0 Terminal Server Edition:
Select [Logoff].
Microsoft Windows 2000 Server / Advanced Server / Datacenter Server:
Select [Shut Down...] and select [Logoff] of the [Shut Down Windows] dialog box.
- (4) Click [OK] on the Logoff Window. The session ends and automatically logs off from the WTS. The “Terminal Connection Manager” dialog box is displayed.

If a dial-up connection is running, click the active button of the window on the right of the screen. Clicking the button disconnects the dial-up connection.

2. Shut down the 630L.

There are three ways to shut down the unit.

- Press the power button. “eClient Shut down” dialog box is displayed. Select “Shut down”.
- Press the power button. “eClient Shut down” dialog box is displayed. Press the power button again.
- Press the power button and leave the unit for 20 seconds. The unit automatically shuts down.

If your 630L starts its operation with an application

1. Log off from the WTS.

Close applications to log off from the WTS.

“Terminal Connection Manager” is displayed.

If a dial-up connection is running, click the active button of the window on the right bottom of the screen. Clicking the button Disconnects the dial-up connection.

2. Shut down the 630L.

(Please refer to the previous page for shutting down the 630L.)

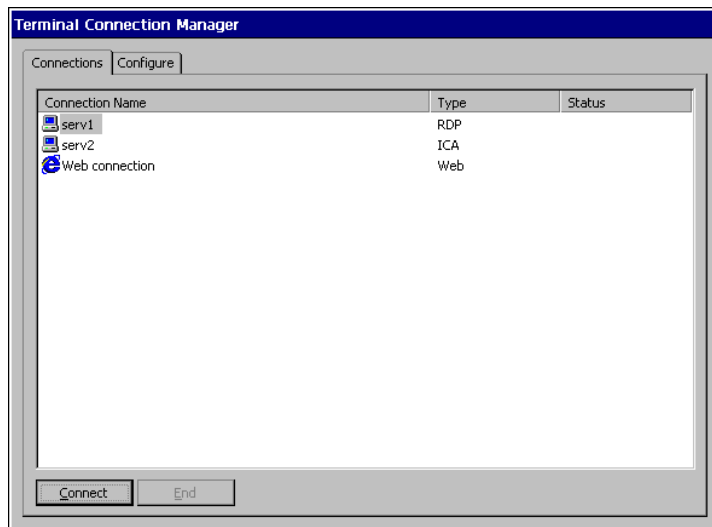
NOTE

- It is possible to Disconnect from a WTS without closing applications in use (or without logging off). (The last view of the application is displayed when the next connection to the WTS is made.)

5-2. Opening/Closing a Local Web Browser

Opening a Local Web Browser

1. Turn on the 630L.
2. “Terminal Connection Manager” dialog box is displayed.



Please follow the directions relevant on the environment of the 630L.

- (1) If the web server is on the same network (Intranet):
Go to step 3.
- (2) If the web server is not on the same network, and a dial-up connection is needed (Internet):
Click an active button of a small window on the right bottom of the screen.



A dial-up connection is made by clicking the button. Check the clock's running, and go to step 3.

3. Click the [Connections] tab.

Select the desired [Web connection] and click [Connect] (or simply double click the [Web connection]).

4. The local web browser opens.

It is possible to browse web pages on the internet.

Closing a Local Web Browser

1. Close the local web browser.

Select [Exit] under the [File] on the menu bar and close the local web browser. (Or click the close button on the title bar of the browser.)

Return to the “Terminal Connection Manager” dialog box.

If a dial-up connection is being made, click the active button of the window on the right of the screen. Clicking the button disconnects the dial-up connection.

2. Shut down the 630L.

There are three ways to shut down the unit.

- Press the power button. “eClient Shut down” dialog box is displayed. Select “Shut down”.
- Press the power button. “eClient Shut down” dialog box is displayed. Press the power button again.
- Press the power button and leave the unit for 20 seconds. The unit automatically shuts down.

NOTE

- It is possible to Disconnect from a local web server without closing a browser.

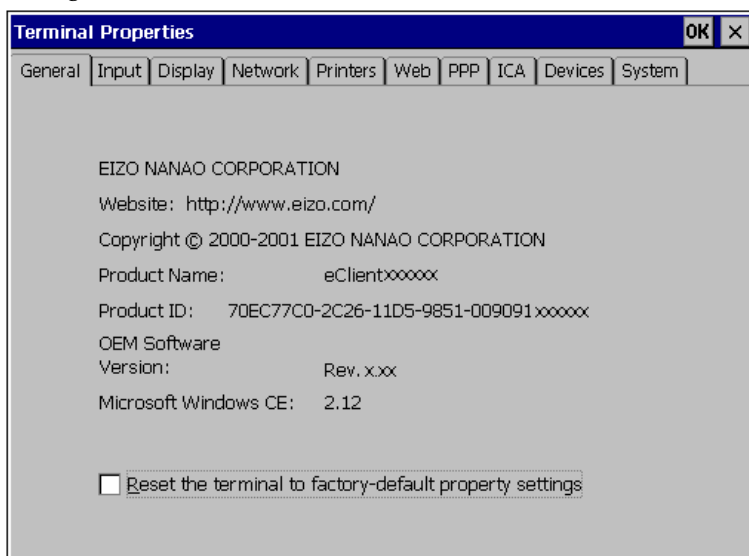
6. USING THE TERMINAL PROPERTIES

This chapter presents how to modify all settings of the 630L using the “Terminal Properties”.

To display the “Terminal Properties” during logging on, press F2 in the “Terminal Connection Manager” dialog box. (Press Ctrl + Alt + End to display the “Terminal Connection Manager”.)

6-1. General Information & Reset to Default

Click [General] tab to confirm general settings and to reset the 630L to factory-default settings.



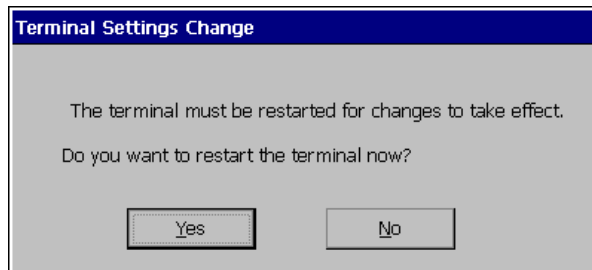
Product Information

[Product Name]Name of this model
[Product ID]Product ID Number of the unit
[OEM Software Version]Revision of the Microsoft Windows CE
[Microsoft Windows CE].... Version of the Microsoft Windows CE

Resetting to Default

1. Click [Reset the terminal to factory-default property settings] check box.
2. The “System Settings Change” dialog box is displayed.
Click [Yes].
3. “Terminal Properties” is displayed.
Click [OK].

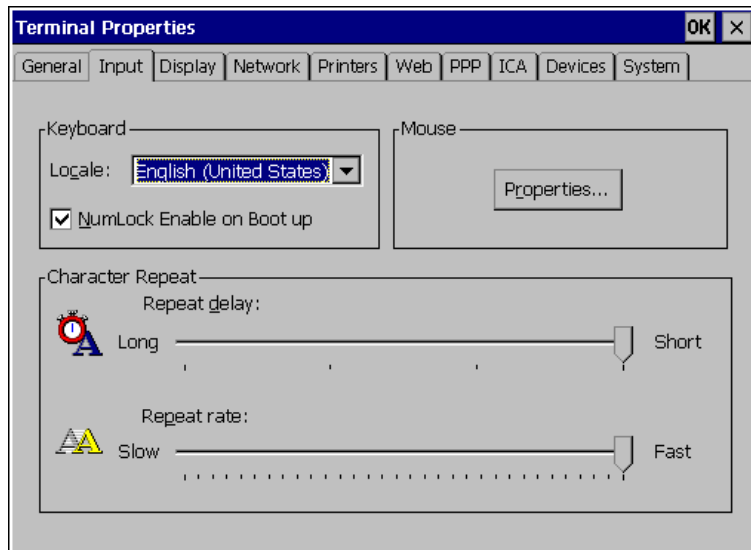
“Terminal Setting Change” dialog box is displayed.



Click [Yes] to restart the terminal. “WBT Setup Wizard” will be displayed after restarting the terminal.

6-2. Input Devices Settings

Click the [Input] tab to modify keyboard, NumLock Key, and mouse characteristics.

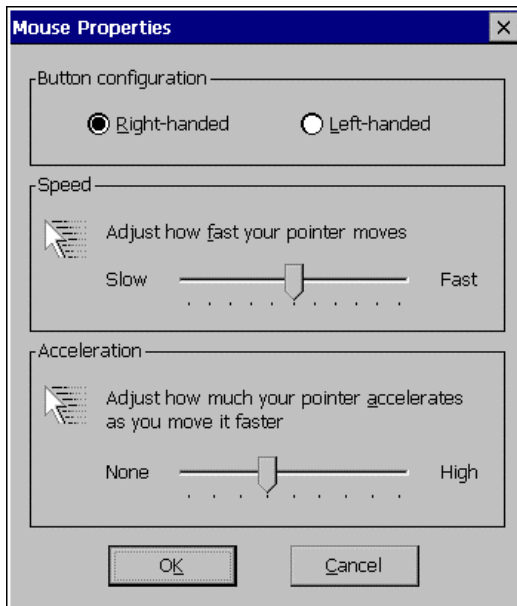


Keyboard Settings

- [Keyboard]
- [Locale]Selects a keyboard language.
- [NumLock Enable on Boot UP]
.....Enables/cancel NumLock function on start-up.
- [Character Repeat]
- [Repeat delay]Allows adjusting the amount of time that elapses before begins repeating when you hold down a key.
- [Repeat rate]Allows adjusting the speed at which a character repeats when hold down a key.

Mouse Settings

Click [Properties...] to display the [Mouse Properties]



[Button Configuration] Assigns the primary mouse button and the secondary mouse button.

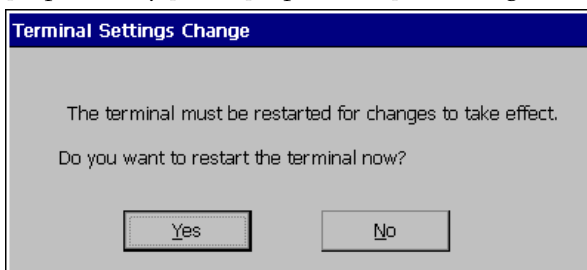
[Speed]..... Adjusts the speed at which the pointer moves on your screen.

[Acceleration] Adjusts how fast the mouse pointer accelerates as you move the mouse.

Click [OK] to save the settings and return to the “Terminal Properties”.

Click [OK] to close “Terminal Properties” and save the adjustments.

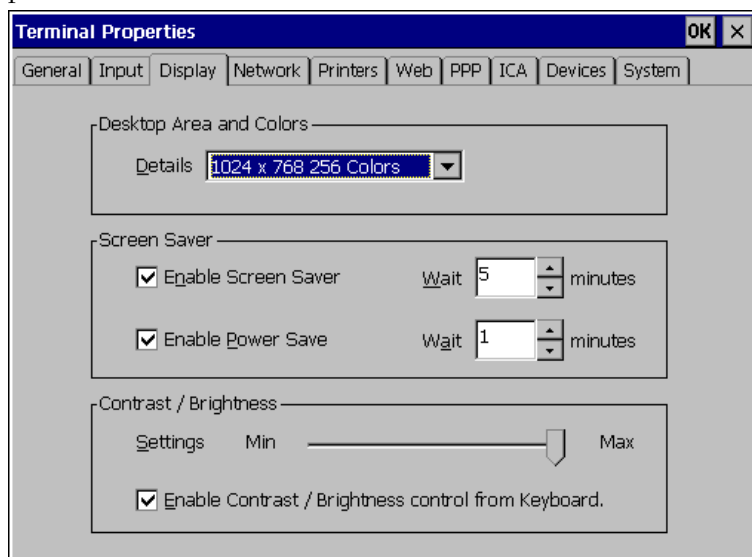
The “Terminal Settings change” dialog box will be displayed when the [Locale:], [Repeat delay:], and [Repeat rate:] are changed.



Click [Yes] and restart the 630L.

6-3. Colors & Power Save Settings

Click the [Display] tab to modify display parameters such as colors, screen saver, and power save.



Resolution and Colors

[Desktop Area and Colors]

[Details].....Adjusts the resolution and colors of the screen.

Screen Saver

[Screen Saver]

[Enable Screen Saver].....Click the [Enable Screen Saver] check box and set an idle period from 1 to 60 minutes before Screen Saver starts in minutes. Once the Screen Saver starts, the backlight is turned off.

[Enable Power Save]Interacts with the [Screen Saver] and shift the state of the monitor into the power save mode. (The power consumption is lower than 5 W in the power save mode.)

Click the [Enable Power save] check box and select an interval (from 0 to 60 minutes) between the time when the Screen Saver starts and when the unit shifts into [Power Saver].

Brightness

[Contrast/Brightness]

[Settings]..... Enables to adjust the brightness of the screen.

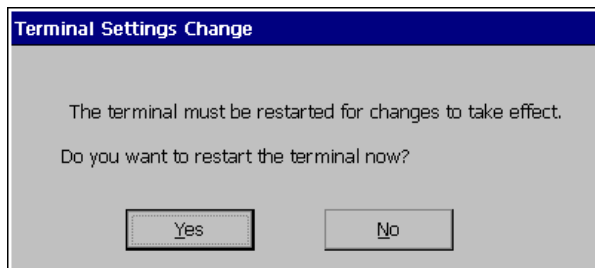
[Enable Contrast/Brightness control from Keyboard]

Enables to adjust the brightness/contrast from a Keyboard.

- [Alt] key and [+] key: The brightness of the screen increases.
- [Alt] key and [-] key: The brightness of the screen decreases.

Click [OK] to close “Terminal Properties” and save the adjustments.

The “Terminal Settings change” dialog box will be displayed to restart the terminal and activate the adjustments when the [Details], [Wait] period of [Screen Saver], or [Enable Contrast/Brightness control from Keyboard] of [Brightness/Contrast] is changed.



Click [Yes] to restart the unit.

NOTE

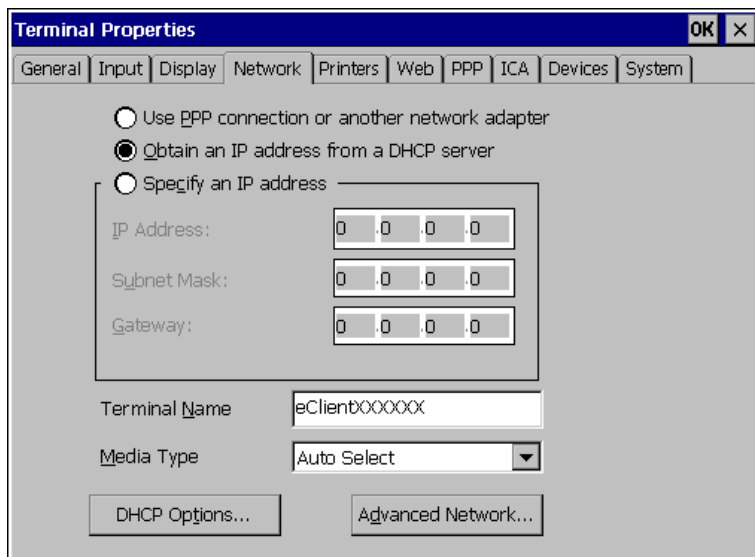
- Do your part to conserve energy, turn off the unit when you are finished using it. Complete energy use can only be accomplished by disconnecting the unit's power supply cord from the plug receptacle.

6-4. Network Settings

Click [Network] tab to set network information for the 630L.

NOTE

- All settings shown here are previously adjusted on the “WBT Setup Wizard”.
- Please set the properties depending on the 630L connection settings.



[Use PPP connection or another network adapter]
Click to use a modem connection to the WTS.

To connect to the WTS with a LAN network, set the following.

[Obtain an IP address from a DHCP server]
 This allows the user to receive IP information from a DHCP service automatically. The DHCP service of a server must be in operation to receive the information.

[Specify an IP address.] If not using a DHCP service, please select this and enter the information shown below.

[IP address] Type the 630L IP address.

[Subnet Mask] Type the subnet mask.

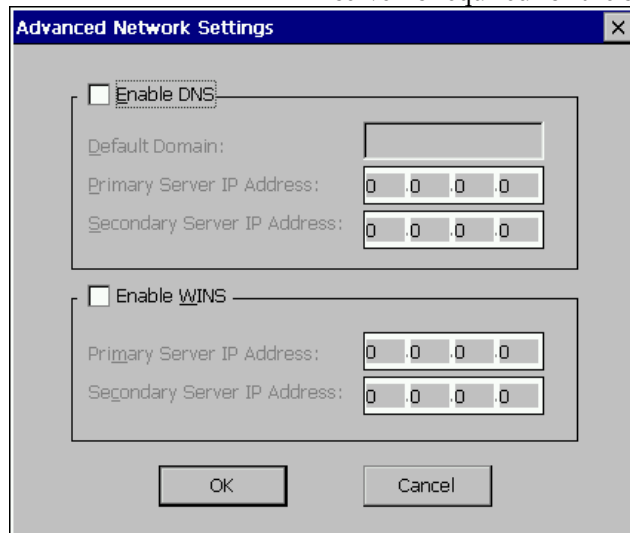
[Gateway] Type the Gateway IP address.

[Terminal Name] Type a name to recognize this unit from others on the network. (Only in use of the RDP protocol)

[Media Type] Set up the transmission speed on the network.

[DHCP Options...].....Click this to receive essential information about the 630L from the DHCP server every time the 630L is turned on. Refer to “Practical Setup” on page 100 for details.

[Advanced Network...]Allows setting for DNS/WINS service. A DNS/WINS server is required for the setting.

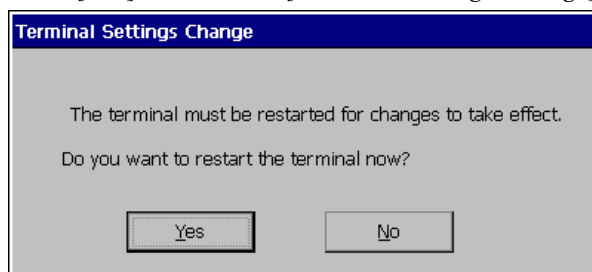


[Enable DNS]Click the check box and type default domain name and IP address of the DNS server.

[Enable WINS]Click the check box and type IP address of the WINS server.

Click [OK] to finish and return to the “Terminal Properties” dialog box.

Click [OK] to show the [Terminal Settings Change] dialog box.



Click [Yes] to restart the 630L.

NOTE

- The [Terminal Settings Change] dialog box will not be displayed when [Terminal Name], [DHCP Options], and [Advanced Network...] are changed, though the unit needs to be restarted to set the adjustment effective.

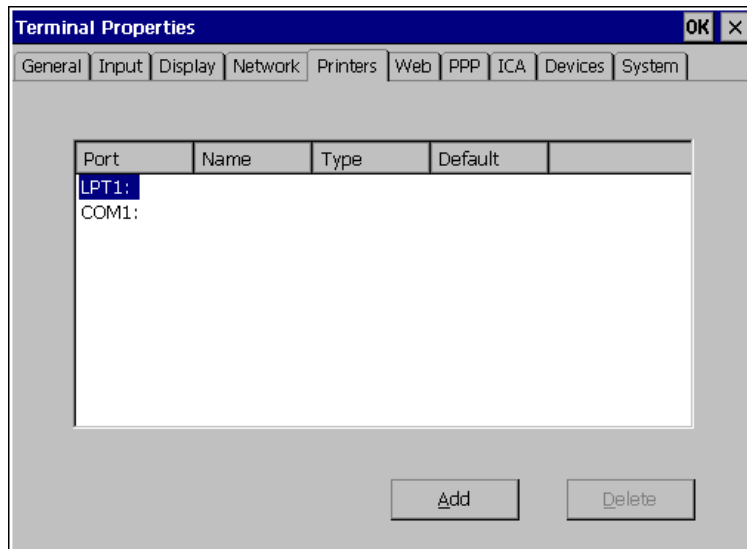
6-5. Printer Settings

NOTE

- The 630L supports a LPT1 port and a COM1 port.
- Use a RDP protocol to set the printer's adjustment. If you are using the ICA protocol, please refer to the instruction manual of the Citrix MetaFrame.

Click [Printers] tab

You can add, delete and change the settings of the printer in this section.



Adding another printer settings

This enables to add a printer when no printer is connected to the LPT1 port and

1. Select LPT1 and click [Add].

2. “Printer Properties” dialog box is displayed.

[Frriendly Name]Name the printer or use the indicated name. (Some programs do not support server and printer name combinations of more than 31 characters.)

[Manufactures]

[Printers].....Select the manufacturer and model of your printer. If your printer is not listed, consult your printer documentation and select the compatible printer.

[Make this the default printer]

.....Click the check box to set the printer as the default printer.

Click [OK] to return to the “Terminal Properties” dialog box.

Click [OK] to save the settings and close the “Terminal Properties” dialog box.

Deleting a printer settings

This enables to delete printer settings when a printer is connected to the LPT1 port.

1. Select LPT1 and click [Delete].

2. “Delete Printer” dialog box is displayed.

Click [Yes] to delete the settings of the printer.

Modifying the settings

This enables to delete printer settings when a printer is connected to the LPT1 port.

1. Select LPT1 and click [Properties...].
2. “Printer Properties” dialog box is displayed.

Change the settings as needed.

[Frriendly Name] Changes the printer's name. (If you are naming the printer, the name combination must be 31 character or less.)

[Manufacture]

[Printers]..... Change the Manufacture and the model name of the printer. If the printer is not on the list, please select the compatible printer. See the printer's instruction manual.

[Make this the default printer]

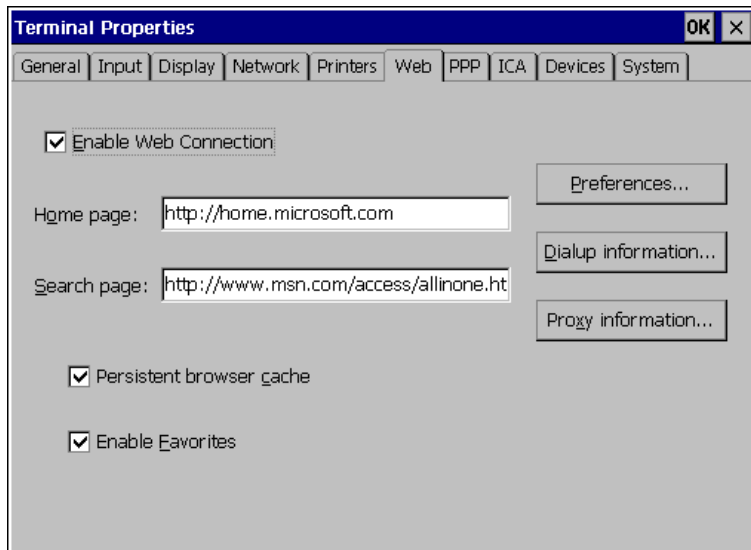
..... Sets/cancels setting the printer as a default. (The 630L corresponds to only LPT1 port, and only one printer at a time can be installed. The installed printer will be always the default printer.)

Click [OK] to return to the “Terminal Properties” dialog box.

Click [OK] in the “Terminal Properties” dialog box to save the settings and close the “Terminal Properties” dialog box.

6-6. Browser Settings

Click [Web] tab to adjust the browser settings of 630L.



[Enable Web Connection]... Click the check box for web connection.

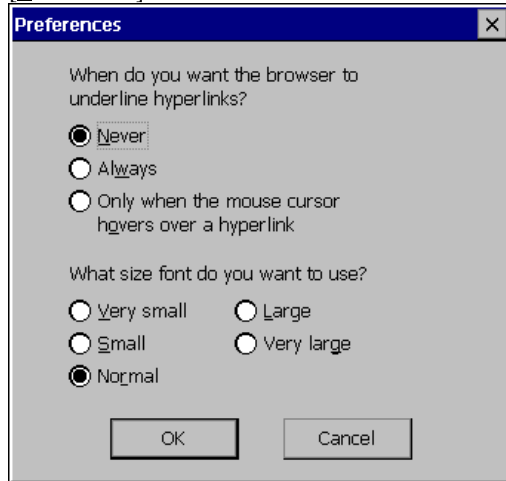
[Home page:]..... Type the URL for the page when “Home” button of the browser is clicked or each time you start the Internet Explore.

[Search page:] Type the URL for the page when “Search” button of the browser is clicked.

[Persistent browser cache]... Click the check box if you want the “History” and “Cookies” portions of the browser cache to persist across Web sessions.

[Enable Favorites]..... Click the check box if you want to enable the “Favorites” feature of the browser. (Favorites will persist across Web sessions.)

[Preference].....Click here to set hyperlink and font size.



[When do you want the browser to underline hyperlinks?]

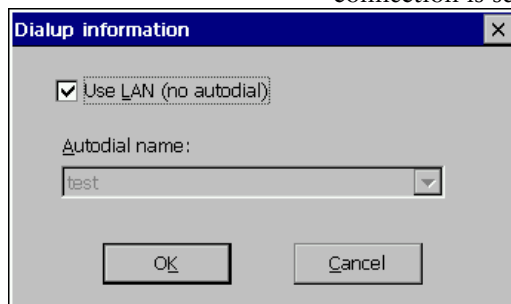
.....Select when you want the hyperlinks to be underlined.

[What size font do you want to use?]

.....Select the font size of the web page.

[Dial-up information]Click this to setup connection.

(This button is displayed only when a dial-up connection is set. Please refer to page 36.)



[Use LAN (no autodial)]Click the check box when you use LAN or manually dial-up for the web connection. (Please make sure to click the check box for the 630L. Autodialing may not operate appropriately.)

[Autodial name:].....Type an autodial name to make a [Web Connection] and a dial-up connection at the same time when dialing-up for the web connection.

[Proxy Information].....Click this for proxy settings.



[Access the Internet using a proxy server]
.....Click the check box if you use proxy server for the web browser connection.

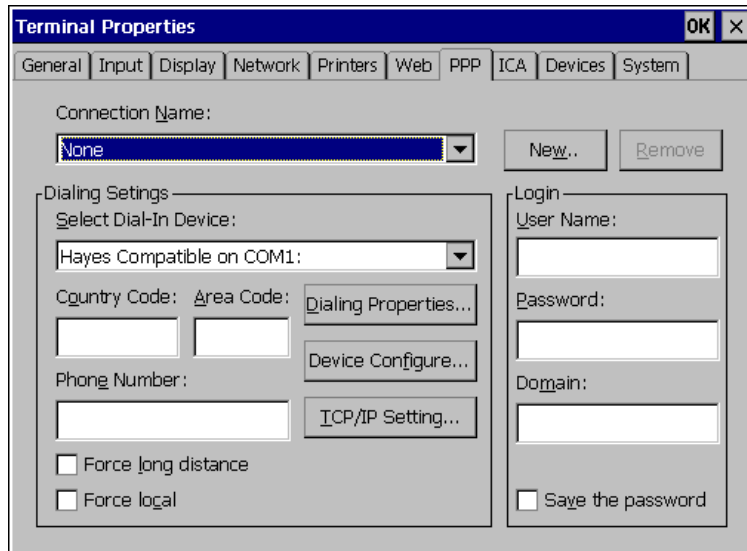
[Proxy server name or IP address:]
.....Type the name of the computer running the proxy server.

[Port].....Type the port number.

[Bypass proxy server for local (Intranet) addresses.]
.....Click the check box if you use proxy server for local addresses.

6-7. Dial-Up (PPP) Connection Settings

Click [PPP] tab to adjust the dial-up settings of 630L.



The screenshot shows the 'Terminal Properties' dialog box with the 'PPP' tab selected. The 'Connection Name' is set to 'None'. The 'Dialing Settings' section includes a 'Select Dial-In Device' dropdown set to 'Hayes Compatible on COM1', 'Country Code' and 'Area Code' fields, a 'Phone Number' field, and checkboxes for 'Force long distance' and 'Force local'. The 'Login' section includes 'User Name', 'Password', and 'Domain' fields, and a 'Save the password' checkbox. Buttons for 'New..', 'Remove', 'Dialing Properties...', 'Device Configure...', and 'TCP/IP Setting...' are also visible.

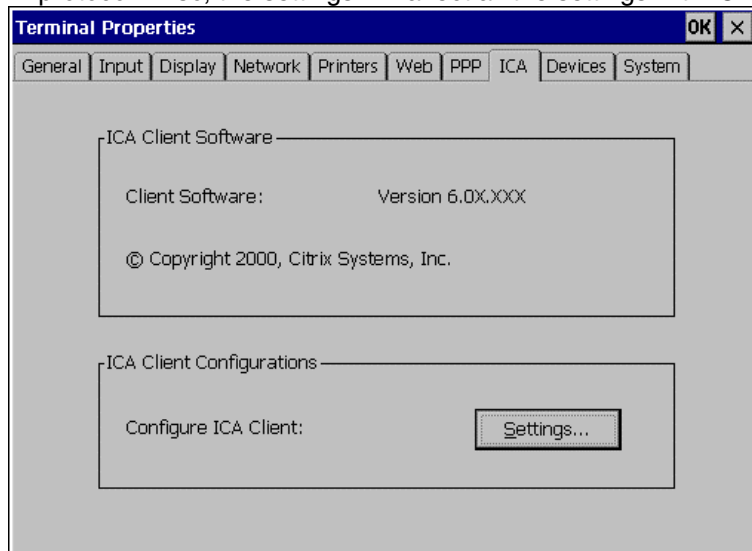
The following details the installation of a dial-up connection to a WTS or a Web Server. (To use a dial-up connection requires an RAS server in operation.) Please refer to page 36 for each setting.

6-8. ICA Settings

Click [ICA] tab to confirm information about Citrix ICA Client version and to change the settings when connecting to the Citrix Server with ICA protocol.

NOTE

- The ICA settings are effective only when the unit is connected to the WTS with ICA protocol. Also, the settings will affect all the settings with ICA protocol.



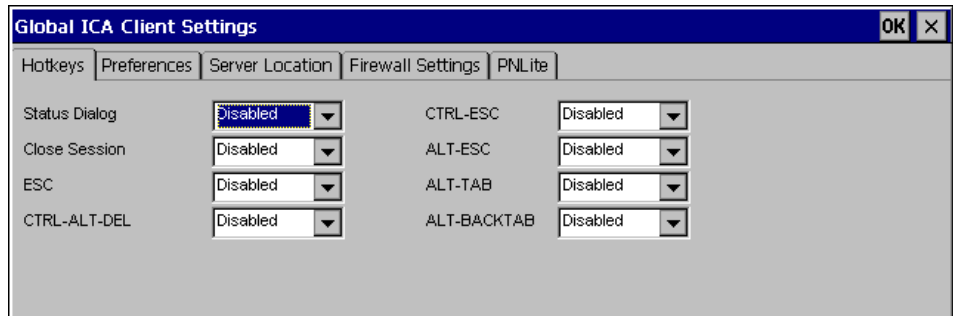
Confirming Citrix ICA Client information

[Client Software]Version of the Citrix ICA Client

General Settings of the ICA Connection

You can change the settings for the ICA Connection.

1. Click [Settings...].
2. “Global ICA Client Settings” dialog box is displayed.



[Hotkeys] tab..... Enables to change the hotkeys when logging on to the Server. There are the hotkeys to control the 630L and the ones same as standard Windows hotkeys. Please refer to the instruction manual of the Citrix MetaFrame for details.

NOTE

- No hotkeys are set in the 630L in the factory default.

[Preference] tab..... Select Colors sent from WTS, and type a client name to identify this unit on the network. The color setting change affects when adding a new connection.

[Server Location] tab
 Type the server location. Please refer to page 50. (This enables to change the server group name as well.)

[Firewall Settings] tab

..... Change the settings of Firewall and SOCKS proxy server. This setting change is displayed when adding a new connection.

NOTE

- If connecting a WTS through internet, the settings should be completed before the WTS is selected.
- If you configure a default SOCKS proxy server, you must specify at least one WTS in the [Server Location] tab for a WTS and published application browsing to work.
- If the Firewall settings are changed here, it is impossible to cancel the settings of a specific connection name. To change the Firewall settings, select a specific connection name and modify them or add a new connection name and change the settings.

[PNLite] tab.....

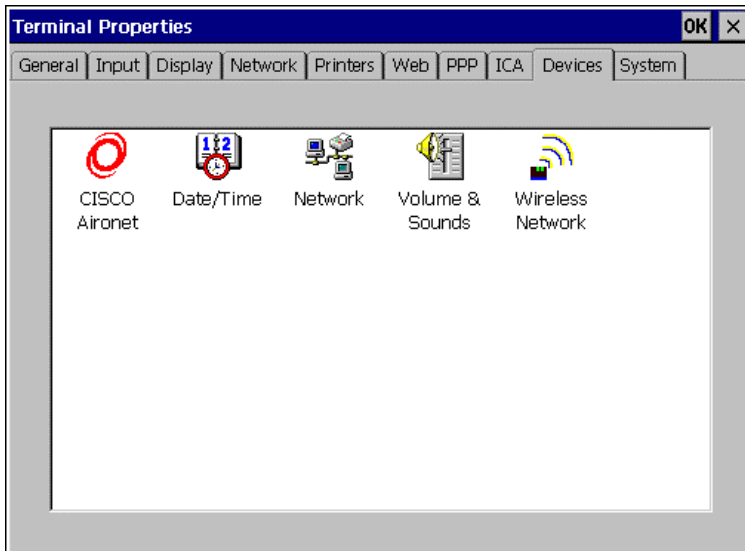
..... Register a public application name to a Terminal Connection Manager as a Connection Entry.

Click [OK] to return to the “Terminal Properties” dialog box.

Click [OK] of the “Terminal Properties” to close the “Terminal Properties” and save the settings.

6-9. Device Settings

Click [Device] tab to confirm and set LAN card properties and speakers of the 630L.



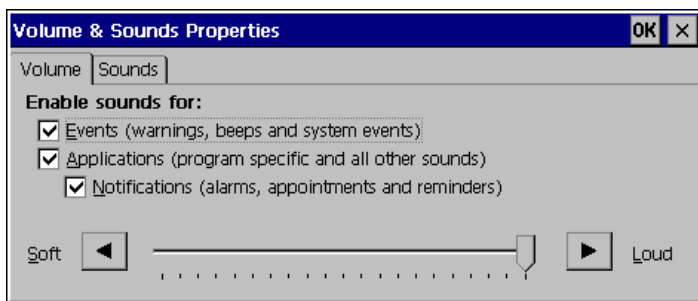
Network Adapter Settings

Configure the properties of the network drivers installed on your device. Please refer to page 29 for details.

Sound Settings

Configure the sound properties of the 630L.

1. Double-click the “Volume & Sounds” icon.
2. “Volume & Sounds Properties” is displayed.



[Volume] tabClick the check boxes to enable sounds for events, applications, and notifications.

[Sounds] tabSelect sounds for each cases.

Click [OK] to return to the “Terminal Properties” dialog box.

Click [OK] to save the settings and close the “Terminal Properties” dialog box.

Date/Time Settings

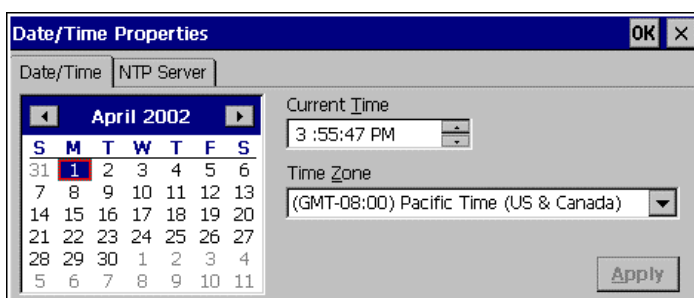
Configure the date/time properties of the 630L.

NOTE

- The settings are referred when the client time zone function of the ICA protocol is effective.
- Date and time will return to the default settings if the power cord is unplugged.

1. Double-click the “Date/Time” icon.

2. “Date/Time Properties” is displayed.



[Date/Time] Tab.....Set date, current time, or time zone. During daylight saving time, click the [Daylight savings time currently in effect] check box.

[NTP Server] TabSynchronize time with the NTP Server. Select when to synchronize time with the NTP server (on every boot up or every time clicking the [Synchronize] button.)

NOTE

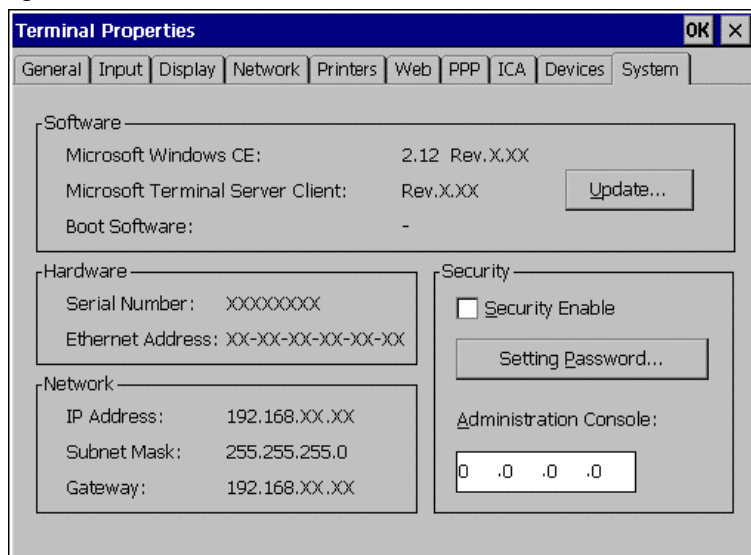
- Synchronizing time at startup is effective when the 630L is connecting WTS/Web Server using a network connector on the rear.
- Getting the NTP Server information from the DHCP Server needs to satisfy the following:
 - * Connect the WTS/Web Server by the network connector on the rear
 - * Use the DHCP Server to get information such as IP address.
 - * Set the NTP Server option at the DHCP Server.

Click [OK] to return to the “Terminal Properties” dialog box.

Click [OK] of the “Terminal Properties” to close the “Terminal Properties” and save the settings.

6-10. Product Information, Security, & Updating Software

Click [System] tab to confirm information about the 630L, to set the security, and to update firmware.



Product Information

[Software]

[Microsoft Windows CE]

.....Microsoft Windows CE Version, Revision

[Windows Terminal Server Client]

.....Window Terminal Server Client Revision

[Boot software].....Boot Software Version of the 630L

(Please refer to the page 97 on [Update...].)

[Hardware]

[Serial Number].....Serial Number of the unit

[Ethernet Address].....Ethernet address for the unit

[Network] (Information adjusted for the connection to a WTS)

[IP Address].....IP address of the unit

[Subnet Mask].....Subnet mask of the unit

[Gateway].....IP address of the Gateway machine if necessary

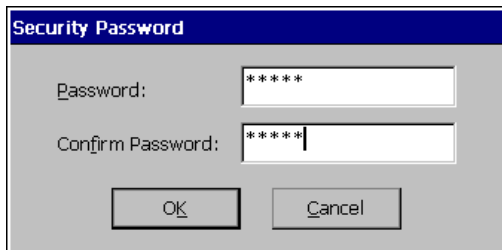
Security Settings

This enables settings on network information of the WTS invisible to prevent from undesirable change. When the security is active, the following settings become.

- “Terminal Connection Manager”
 - * [Configure] tab
- “Terminal Properties”
 - * [General] tab... [Reset the terminal to factory - default settings]
 - * [Network] tab
 - * [Printers] tab
 - * [PPP] tab
 - * [ICA] tab
 - * [System] tab... [Update...], [Security]

PROCEDURE

1. Click the [Security Enable] box.
2. Click [Setting Password...].
3. “Security Password” dialog box is displayed.



[P]assword].....Enter the password.

[C]onfirm password:].....Enter the same password for confirmation

Click [Ok] to return to the “Terminal Properties” dialog box.

Click [OK] to save the settings and close the “Terminal Properties” dialog box.

CANCELING SETTINGS

1. Display “Terminal Connection Manager”.
2. Press [Ctrl], [A], and [F2] at the same time.
3. “Enter Security Password” dialog box is displayed.



[Password:].....Enter the password
Click [OK] on [Enter Security Password] when finished.

4. All settings in the “Terminal Properties” will be active.

Click the [Security Enable] check box on the [System] tab to remove the check mark.

Click [OK] on the “Terminal Properties” to save the settings and close the “Terminal Properties”. Security becomes canceled.

Administration Console

Assign the 630L a server with the Network Administrator, utility software for eClient. Other servers with the Network Administrator will not be able to control the 630L after setting the administration console.

[Administration Console] ...assign an IP address of a server with the Network Administrator.

Software Updating

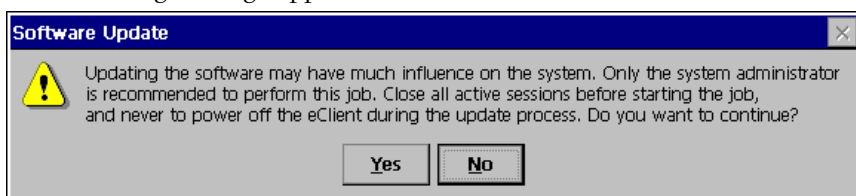
You can update the built-in software.

NOTE

- Before updating, please complete the following:
 - * Copy the update file (*.bin) to the accessible file folder of the FTP Server.
 - * If the WTS is connected with LAN, close all the connection to the FTP Server.
 - * Make a dial-up connection if it is adopted to connect the WTS. Software Updating is not available if a dial-in is adopted to connect the WTS.

1. Click the [Update...] of [Software].

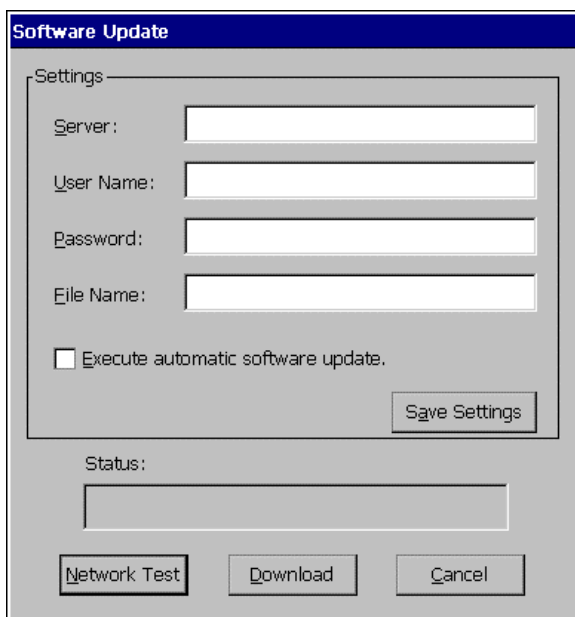
The following message appears.



Obey the instruction of the message completely and do not turn off the unit while updating.

Click [Yes] to continue.

2. The “Software Update” dialog box appears.

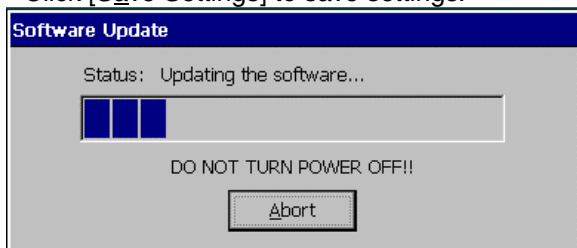


[Server:]Type IP address or full domain name of the FTP Server.

[User Name:]Type the user name to connect the FTP Server.
[Password:].....Type the password for the user name to connect the FTP Server.
[File Name:].....Type the folder and copied file name located in the FTP Server.
<Example>
Type the file name as indicated below if the file is in the “update folder” in the “software folder”:
 \software\update*.bin

NOTE

- Clicking the "Execute automatic software update." check box will automatically consult the update file in the location indicated in the "Software Update" dialog box each time turning on the unit. If the update file consulted is newer, the software will be updated automatically while displaying the following dialog box. When updating the software, please set the following;
(This function is not available for a modem connection. Please do not click the check box.)
 - * Keep the keyboard and the mouse connected. (Operate with the keyboard and the mouse if failed to update.)
 - * Click [Save Settings] to save settings.

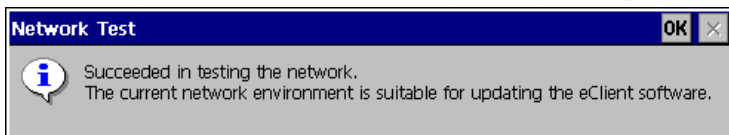


- Click [Save Settings] if using the same settings for the next update.
 - * After inputting information, click [Save Setting] if using the “Automatic Update” function.

3. Preventing from update failure, check if the settings are correct and the network environment is suitable.

Click [Network Test].

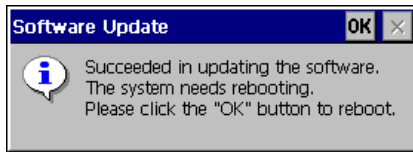
If the settings are correct, the following message is displayed.



Click [OK].

4. Click [Download].

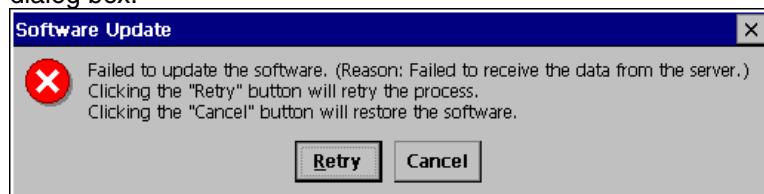
The following message is displayed when you successfully download the software.



Click [OK] and restart the 630L.

NOTE

- Failing to download results in program's returning to the "Software Update" dialog box.



- * In case of returning to the "Software Update" dialog box, confirm such as network settings and redo the [Settings] before clicking [Download].
- * In case of retry dialog box is displayed, confirm connection or network settings by following the message, and click [Retry]. If the setting still fails, click [Cancel] to automatically restore the original software and restart the unit. The unit restarts and resets the update settings. Set the "Software Update" settings once again and download the software from the FTP Server. Do not turn off the unit when this dialog box is displayed until all the process is completed. The 630L will not restart correctly.

7. PRACTICAL SETUP

By utilizing the DHCP Option function of the DHCP Server, necessary information is supplied by the DHCP Server, and each setting is automatically set every time the unit is turned on.

The following information can be obtained by the 630L.

- WTS/Web Server Connection Settings
- Automatic Software Update
- Security Settings
- Administration Console Setting

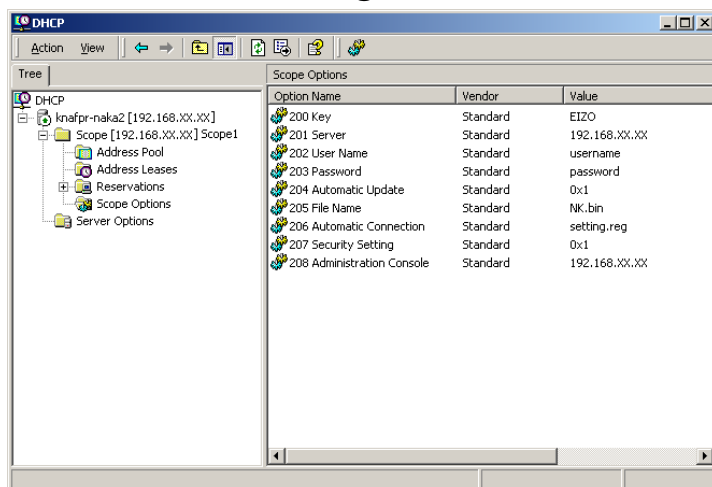
NOTE

- For DHCP Option settings, confirm the following:
 - * The 630L is connected to the WTS/Web server through built-in LAN.
 - * A DHCP Server is used for obtaining the IP address.
- If you need to change the following settings from the defaults, please change them before using the DHCP option function.
(information not given by using the DHCP option)

Items		Default Settings
Input Tab	Locale (Input Language)	English (United States)
	NumLock Enable on Boot UP	Enable
	Button Configuration	Right-Handed
Display Tab	Desktop area and color	1024 x 768 256 Colors
	Enable Screen Saver / Wait	Enable / 5 Minutes
	Enable Power Save / Wait	Enable / 1 Minute
	Contrast/Brightness	Maximum
	[Enable Contrast/Brightness control from Keyboard]	Enable
Printer Tab	Printer Settings	No printer connected
Web Tab	Search Page	http://www.msn.com/access/allinone.htm
	Persistent browser cache	Enable
	Enable Favorites	Enable
	When do you want the browser to underline hyperlinks?	Never
	What size font do you want to use?	Normal
	Access the Internet using a proxy server.	Disable

ICA Tab	Hotkeys	Disable
	Colors	256 colors
	Client Name	eClient***** (Last 6 digits of the Mac address)
	Server Location	Automatically Found
	Firewall Settings	Disabled
Device Tab	Volume	Maximum
	Enable Sounds for:	Events, Applications, Notifications
	Scheme	No Sounds
	Date	January 1 st , 2001
	Time	Start at 00:00:00
	Time Zone	(GMT-8:00) Pacific Time (US & Canada)
	NTP Server	Does not Synchronize Time

DHCP Server Settings



Please open DHCP settings to configure each DHCP Option as follows.

[Key].....Set the value as “EIZO”. (The 630L will not accept any value but “EIZO”.)

[Server]Type an IP address of the Server installing an update file and a registry file of the 630L.

[User Name]Type the user name to logon to the FTP Server.

[Password]Type the password for the user name.

[Automatic Update]Enable/disable an automatic update.

[File Name].....Type the file name to update the software of the 630L.

[Automatic Connection]Make a Registry File to connect to a WTS / Web server (Refer to the NOTE below for the settings).

[Security Setting].....Enable/disable the security settings.

[Administration Console] ...Type the IP address of the Server where Network Administrator (eClient utility software) is installed.

NOTE

- Making a Registry File to Connect to a WTS/Web Server.
Please refer to the example below, make a registry file, and save it in Unicode format. Please change the italic bold phrases as necessary.
 - **ConnectionName**
: Type the connection name in the "Terminal Connection Manager".
 - **TerminalServerAddress**
: Type the IP address or the full domain name of the WTS.
 - **URL**
: Type the URL of the Web Server. (Including "http://".)

Registry file	Value
[HKEY_LOCAL_MACHINE\SOFTWARE\Microsoft\WBT]	
"SetupWizardEnabled"=dword:0	Specifies whether starting up "WBT Setup Wizard" or not. (Fixed to "0")

(RDP Connection)

Registry file	Value
[HKEY_LOCAL_MACHINE\SOFTWARE\Microsoft\WBT\Clients\Registration\RDP\Connections\ConnectionName]	
"DeleteCmdLineArgs"="/d ConnectionName	Command argument to delete connection information
"DeleteExe"="TSConMan"	Fixed - command (an executable file) to delete connection information.
"PropertiesCmdLineArgs"="/e ConnectionName	Command argument to change connection information.
"PropertiesExe"="TSConMan"	Fixed - Command (executable file) to change connection information
"StartCmdLineArgs"=" " ConnectionName "	Command argument to connect to a WTS
"StartExe"="mstsc.exe"	Fixed - Command (executable file) to connect to a WTS
"Description"=" ConnectionName "	Name displayed on the Connection Manager
[HKEY_CURRENT_USER\Software\Microsoft\Terminal Server Client\ConnectionName]	
"Full Address"=" TerminalServerAddress "	IP address or full domain name of the WTS

(ICA Connection)

Registry file	Value
[HKEY_LOCAL_MACHINE\SOFTWARE\Microsoft\WBT\Clients\Registration\ICA\Global\WFCClient]	
"Version"="2"	Event for use of ICA protocol. (Fixed to "2")
[HKEY_LOCAL_MACHINE\SOFTWARE\Microsoft\WBT\Clients\Registration\ICA\Connections\ConnectionName]	
"DeleteCmdLineArgs"="/D: ConnectionName "	Command argument to delete connection information
"DeleteExe"="CEICAMGR"	Fixed - command (an executable file) to delete connection information.
"PropertiesCmdLineArgs"="/P: ConnectionName "	Command argument to change connection information.
"PropertiesExe"="CEICAMGR"	Fixed - Command (executable file) to change connection information

"StartCmdLineArgs"="/L " ConnectionName "	Command argument to connect to a WTS
"StartExe"="WFICACE"	Fixed - Command (executable file) to connect to a WTS
"ScreenPercent"="100"	Fixed - Assign the ratio of the 630L screen to the displayed Window of the WTS.
"Description"="ConnectionName"	Name displayed on the Connection Manager
"Address"="TerminalServerAddress"	IP address or full domain name of the Meta Frame Server

(Web Connection)

Registry	Value
[HKEY_LOCAL_MACHINE\SOFTWARE\Microsoft\WBT]	
"SetupWizardEnabled"=dword:0 Specifies whether starting up "WBT Setup Wizard" or not. (0; not starting up, 1; starting up)
[HKEY_LOCAL_MACHINE\SOFTWARE\Microsoft\WBT\Clients\Registration\Web\Connections\Web1]	
"StartCmdLineArgs"="URL" Specifies the URL (including http://) to access.

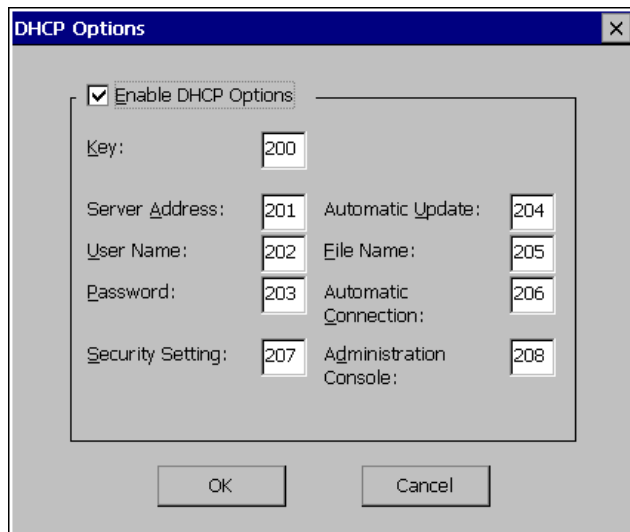
Registry	Value
[HKEY_LOCAL_MACHINE\SOFTWARE\Microsoft\WBT\Shell]	
"EnableAutoConnect"=dword:1 Specifies whether to enable/disable automatic connection. (0;disable, 1;enable)
"ConnectionDefaultKey"="ConnectionName" Specify connection information name of the automatic connection.
"ConnectionDefaultType"="RDP" Specify the type of the automatic connection. (The type is RDP, ICA, or Web.)

*¹ One entry name can be set at the Administration Console function.

630L Settings

The 630L's default setting is set to enable DHCP Options. There is no need for extra settings. After initial setup, confirm the following:

- [Use PPP connection or another network adapter] in the [Network] tab of “Terminal Properties” is selected.
- Press “DHCP Option” on “Network” tab in the “Terminal Properties”. “DHCP Options” is displayed.



[Enable DHCP Option] is selected, and code numbers assigned for the DHCP options.

After completing the above, the 630L will automatically receive information such as an IP address from the DHCP Server every time the unit is turned on.

NOTE

- If the DHCP Option is used to setup the 630L for the first time, “Terminal Connection Manager” will appear because the unit automatically receives information from the DHCP Server. (“WBT Setup Wizard will not be displayed.)
- If the DHCP Option is set once and needs to be canceled, please change the key of the DHCP Server. Even if changing the DHCP Option in the 630L, the DHCP Server will overwrite the option next time the unit is restarted, and the changes in the 630L will not be effective.

8. TROUBLESHOOTING

This page presents problem that can be corrected by the user. If a problem persists even after applying the suggested remedies, contact an EIZO dealer.

Problems	Points to check with possible solutions
1. No picture is displayed on the screen.	<input type="checkbox"/> Check if the power is OFF. <input type="checkbox"/> Check brightness setting. Minimum settings will cause screen to be blank. <input type="checkbox"/> Try pressing a key on the keyboard, or clicking the mouse. (The monitor may be in a power saving mode.)
2. The following messages appear on screen after the power is on: (The operation automatically starts up after the message disappears.) * “WARNING No Keyboard Connected” * “WARNING No Mouse Connected”	<input type="checkbox"/> Check if the cable of the keyboard or the mouse is securely connected. <input type="checkbox"/> Check if the cable of the keyboard or the mouse is connected to the proper connector. <input type="checkbox"/> Turn off the power, and turn it on a few seconds later.
3. Input devices (such as a keyboard or a mouse) do not work properly.	Solution on the mouse or the keyboard <input type="checkbox"/> Check if the cable of the keyboard or the mouse is securely connected. <input type="checkbox"/> Check if the cable of the keyboard or the mouse is connected to the proper connector. <input type="checkbox"/> Check if the network cable or the modem is securely connected. (To make sure the ethernet cable is connected securely, check if one of the indicators on the ethernet connector turns green.)
4. Afterimages appear on the screen.	<input type="checkbox"/> When the screen image has been changed after displaying the same image for a long period, afterimages may appear. Use the screen saver and avoid leaving the screen on all the time.
5. The screen has defective pixels (e.g. slightly light or dark).	<input type="checkbox"/> This is due to the characteristics of the panel itself, and not the failure.
6. Fingerprints appear on the screen.	<input type="checkbox"/> Leaving the white screen on may solve the problem.

NOTE

- Please do not connect and disconnect repeatedly a keyboard or a mouse while the 630L is in operation, as the 630L may cause the unit damage.

9. CLEANING

Periodic cleaning is recommended to keep the monitor looking new and to prolong its operation lifetime.

NOTE

- Never use thinner, benzene, alcohol (ethanol, methanol, or isopropyl alcohol), abrasive cleaners, or other strong solvents, as these may cause damage to the cabinet or LCD panel.

Cabinet

To remove stains, wipe the cabinet with a soft, lightly moistened cloth using a mild detergent. Do not spray wax or cleaner directly onto the cabinet.

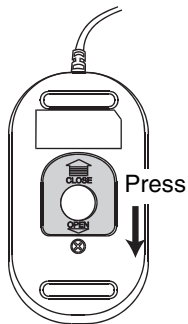
LCD Panel

- The LCD surface can be cleaned with a soft cloth, such as cotton or lens paper.
- If necessary, stubborn stains can be removed by moistening part of a cloth with water to enhance its cleaning power.

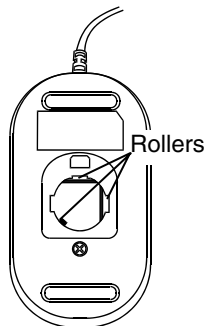
Mouse

If you find that the pointer on the screen doesn't move smoothly, your mouse needs to be cleaned. Periodically clean the mouse for your operation.

- (1) Turn off the 630L.
- (2) Turn the mouse upside down and remove the mouse trackball cover. Press the cover towards "Open" while pulling the other side of the cover.



- (3) Remove the trackball.
- (4) Wipe the trackball with a soft cloth with neutral detergent.
- (5) Clean all the rollers, getting all the lint off of them.
You can use a wet cotton swab to clean the rollers. Turn them to clean the entire roller.



- (6) Remove the dust inside of the mouse.
- (7) Put the trackball back into the mouse.
- (8) Close the mouse trackball cover.

10. SPECIFICATIONS

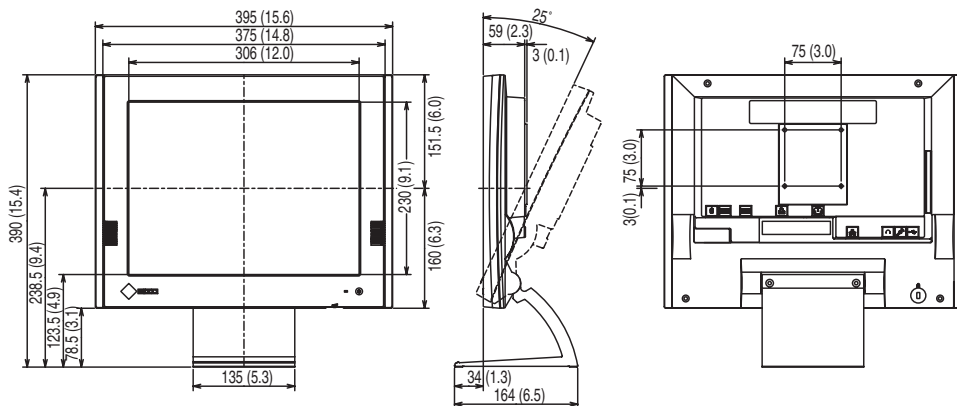
CPU and Memory	CPU	National Semiconductor Geode GX1, 300 MHz
	Memory	RAM; 64 MB, ROM; 32 MB
	LAN	10BASE-T/100 BASE-TX, Wake On LAN supported
	Speakers	Output Level: 1 W + 1 W, stereo
Display	LCD Panel	38 cm (15 inch) TFT color LCD panel Anti-Glare Hard Coating (Viewing Angle: Horizontal; 160°, Vertical; 150°)
	Dot Pitch	0.297 mm x 0.297 mm
	Resolution	1024 x 768
	Viewable Image Size	304.1 mm (H) x 228.1 mm (V) (11.9" (H) x 8.9" (V))
	Display Color	256 / 65536 colors
Complying Protocol		Microsoft Remote Desktop (RDP) Citrix Independent Computing Architecture (ICA)
Software		Microsoft Windows CE Version 2.12 Windows-based Terminal 1.5 Browser Add-on Citrix ICA Client 6.20
Complying Software for Windows Terminal Server		Microsoft Windows NT Server 4.0 Terminal Server Edition, Microsoft Windows 2000 Server / Advanced Server / DataCenter Server, Citrix MetaFrame 1.8 / 1.8 + FR1 / XP
Mouse		PS/2 2 button Mouse
Power Supply		100-120/200-240 VAC ± 10 %, 50/60 Hz, 0.8/0.5 A
Power Consumption		Min: 31 W Max: 45 W (with Keyboard, Mouse, USB, LAN, PC card) Power saving mode: Less than 10 W
Interface Connector	LAN	10BASE-T/100 BASE-TX (RJ-45) x 1
	Keyboard, Mouse	PS/2 (Mini DIN 6 pin) x 2
	USB Port:	Down Stream x 2
	Parallel	IEEE1284 (D-Sub 25 pin) x 1
	Serial Port	RS-232C (D-Sub 9 pin) x 1
	PC Card Slot	PCMCIA Type II (68 pin) x 1
	Line Output	Stereo mini jack x 1
	Monaural Microphone*1	Mini jack x 1
Dimensions (With the tilt stand)		395 mm (W) x 390 mm (H) x 164 mm (D) (15.6" (W) x 15.4" (H) x 6.5" (D))

*1 Monaural microphone connector is not available now.

Weight	5.2 kg (11.5 lbs.) (without the tilt stand 4.0 kg (8.8 lbs.))
Environmental Specifications	Temperature Operating: 0°C to 35°C (32°F to 95°F) Storage: -20°C to 60°C (-4°F to 140°F) Humidity 30 % to 80 % R.H. Non-condensing
Certifications and Standards	
100 -120 VAC range	TÜV/NRTL, c-TÜV, FCC class A, CB, TÜV Rheinland Ergonomics Approved, EPA ENERGY STAR® program, TCO'99 ²
200-240 VAC range	CE, CB, TÜV Rheinland/GS, TÜV Rheinland/Ergonomic Approved, EPA ENERGY STAR® program, TCO'99 ²

Dimensions

mm (inches)



11. REFERENCE

11-1. Attaching an Arm Stand

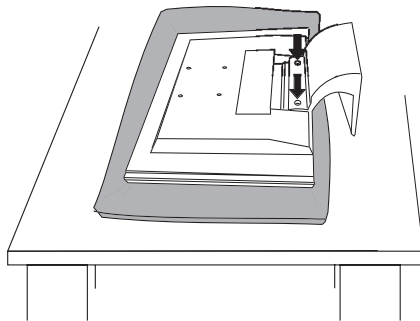
The 630L can be used with an arm stand by removing the tilt stand and attaching the arm stand to the terminal.

NOTE

- Use an arm stand that satisfies the following.
 - When using the 630L with an arm stand, the arm stand must be VESA approved:
Use an arm stand with a 75 mm x 75 mm hole spacing on the arm mounting pad.
Use an arm stand that is able to support an object weighing 8.0 kg.
A GS approved arm stand.
 - Use an arm stand with sufficient stability (mechanical firmness) to support the weight of the monitor.
 - Use an arm stand remaining that position where it is manually moved.
 - Use an arm stand with the ability to tilt the monitor forward and backward.
- Please connect cables after attaching an arm stand.

Setup Procedure

- 1.** Lay the 630L down as shown below. Do not scratch the panel.



- 2.** Remove the stand by loosening the screws (M4 x 16 mm).

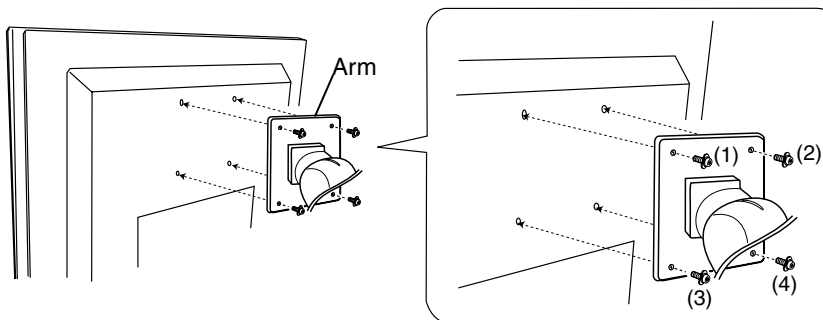
3. Attach an arm stand to the 630L securely.

WARNING

Install the unit securely when attaching to an arm stand.

When attaching an arm stand, please refer to the user's manual of the arm stand and install the unit securely with the enclosed screws. Not doing so may cause the unit to come unattached, which may result in injury or equipment damage. When the unit is dropped, please ask your dealer for advice. Do not continue using a damaged unit. Using a damaged unit may result in fire or electric shock.

When reattaching the stand, please use the same screws (M4 x 16 mm) and tighten them securely.



(1), (2), (3), (4): Enclosed Screws, M4 x 12 mm

INDEX

A	
ADDING & CHANGING A CONNETION	
NAME	43
Administration Console	96
Application to Run	47, 54
Attaching an Arm Stand.....	112
Automatic Logon	46, 55
Autostart Connection.....	64
B	
Brightness	6, 77
Browser Setup.....	19, 84
C	
Citrix Server or Published Application	
Selection	50
Cleaning	108
Client Name.....	89
Colors	18, 55, 76, 89
Compress Data Stream.....	56
Connecting the eClient 630L.....	10
Connection Name.....	45, 48, 54, 59
Connection with a LAN Card	29
Controls & Connectors	7
D	
Device Settings	91
Devices.....	31
DHCP	15, 78
DHCP Options.....	79, 100
Dial-in Connection	36
Dial-In Device	52
Dial-up Connection Settings.....	38, 87
Dial-Up Connection settings.....	36
Disconnect.....	69
DNS.....	17
Domain Name	17
E	
Editing a Connection	61
Encryption Level.....	57
F	
Firewall Settings	58, 90
G	
General Information.....	72
Global ICA Client Settings	89
H	
Hotkeys	89
I	
ICA	43, 49
ICA Connection	62
ICA Settings	88
IP address	15, 16, 45
K	
Keyboard	11
Keyboard Settings	74
L	
Local Printer Setup.....	24
Logoff from the WTS	68
Logon & Logoff.....	65
Logon to a WTS	65
M	
Making a Registry File.....	103
Mouse	6
Mouse Settings	75
Multi Session	67
N	
Network Adapter Settings.....	91
Network Settings	30, 34, 37, 78
O	
Opening/Closing a Local Web Browser ...	70
Overview	9
P	
Package Contents	6
Power Indicator	7
Printer.....	11
Printer Configuration Utility	56
Printer Settings.....	81
Product Information.....	94
Program Neighborhood Lite	90
Protocol	44, 49

R

RAS.....	36
RDP.....	43, 44
Reference.....	112
Resetting to Default.....	73
Resolution.....	18, 76

S

Screen Saver.....	76
Security Settings.....	95
Serial Port.....	6
Server Location.....	89
Setting up.....	10
Software Updating.....	97
Sound Settings.....	56, 92, 93
Speakers.....	7
Specifications.....	110
Specify an IP Address.....	16
Specify Connection Type.....	50
SpeedScreen.....	56
Subnet Mask.....	16

T

TCO.....	6
Terminal Connection Manager.....	48, 58
Terminal Name.....	15, 78
Terminal Properties.....	32, 39, 72
Title for the ICA Connection.....	54
Troubleshooting.....	106

V

Volume.....	7
-------------	---

W

Wake on LAN.....	6
Windows Terminal Server (WTS).....	5
WINS.....	17
WTS Connection Wizard.....	45

Free Manuals Download Website

<http://myh66.com>

<http://usermanuals.us>

<http://www.somanuals.com>

<http://www.4manuals.cc>

<http://www.manual-lib.com>

<http://www.404manual.com>

<http://www.luxmanual.com>

<http://aubethermostatmanual.com>

Golf course search by state

<http://golfingnear.com>

Email search by domain

<http://emailbydomain.com>

Auto manuals search

<http://auto.somanuals.com>

TV manuals search

<http://tv.somanuals.com>