



PF719
7" Digital Photo Frame

For the most up-to-date version of this User's Guide, go to www.gpx.com

WARNINGS AND PRECAUTIONS

- **CAUTION:** TO PREVENT ELECTRIC SHOCK, MATCH WIDE BLADE OF PLUG TO WIDE SLOT, FULLY INSERT.
- **WARNING:** To prevent fire or shock hazards, do not expose this unit to rain or moisture.
- **CAUTION:** Use of controls or adjustments or performance of procedures other than those specified may result in hazardous radiation exposure.
- **WARNING:** Changes or modifications to this unit not expressly approved by the party responsible for compliance could void the user's authority to operate the equipment.
- **WARNING:** Do not place the unit on top of any soft, porous, or sensitive surfaces to avoid damaging the surface. Use a protective barrier between the unit and surface to protect the surface.
- **WARNING:** Use of this unit near fluorescent lighting may cause interference regarding use of the remote. If the unit is displaying erratic behavior move away from any fluorescent lighting, as it may be the cause.
- **CAUTION:** Danger of explosion if battery is incorrectly replaced. Replace only with the same or equivalent type.
- **PRÉCAUTION:** *Danger d'explosion si les piles sont remplacées de façon incorrect. Remplacer les piles seulement par le même type de pile ou l'équivalent.*
- **WARNING:** There is a danger of explosion if you attempt to charge standard Alkaline batteries in the unit. Only use rechargeable NiMH batteries.
- **WARNING:** The remote control's button cell battery contains mercury. Do not put in the trash, instead recycle or dispose of as hazardous waste.
- **WARNING:** Lithium batteries, like all rechargeable batteries are recyclable and should be recycled or disposed of in normal household waste. Contact your local government for disposal or recycling practices in your area. They should never be incinerated since they might explode.

Main plug is used as disconnect device and it should remain readily operable during intended use.

Do not mix old and new batteries.

Do not mix alkaline, standard (carbon-zinc), or rechargeable (ni-cad, ni-mh, etc) batteries.

No mezcle baterias viejas y nuevas.

No mezcle baterias alcalinas, estándar (carbone-zinc) o recargables (ni-cad, ni-mh, etc.).

CAUTION
RISK OF ELECTRIC SHOCK
DO NOT OPEN

WARNING: TO REDUCE THE RISK OF ELECTRIC SHOCK, DO NOT REMOVE COVER (OR BACK). NO USER-SERVICEABLE PARTS INSIDE. REFER SERVICING TO QUALIFIED SERVICE PERSONNEL.



The lightning flash with arrowhead symbol, within an equilateral triangle, is intended to alert the user to the presence of uninsulated "dangerous voltage" within the product's enclosure that may be of sufficient magnitude to constitute a risk of electric shock to persons.



The exclamation point within an equilateral triangle is intended to alert the user to the presence of important operating and maintenance (servicing) instructions in the literature accompanying the appliance.



This product utilizes a Class 1 laser to read Compact Discs. This Laser Compact Disc Player is equipped with safety switches to avoid exposure when the CD door is open and the safety interlocks are defeated. Invisible laser radiation is present when the CD Player's lid is open and the system's interlock has failed or been defeated. It is very important that you avoid direct exposure to the laser beam at all times. Please do not attempt to defeat or bypass the safety switches.

IMPORTANT SAFETY INSTRUCTIONS

1. Read these Instructions.
2. Keep these Instructions.
3. Heed all Warnings.
4. Follow all instructions.
5. Do not use this apparatus near water.
6. Clean only with a dry cloth.
7. Do not block any ventilation openings. Install in accordance with the manufacturer's instructions.
8. Do not install near any heat sources such as radiators, heat registers, stoves, or other apparatus (including amplifiers) that produce heat.
9. Do not defeat the safety purpose of the polarized or grounding - type plug. A polarized plug has two blades with one wider than the other. A grounding type plug has two blades and a third grounding prong. The wide blade or the third prong are provided for your safety. When the provided plug does not fit into your outlet, consult an electrician for replacement of the obsolete outlet.
10. Protect the power cord from being walked on or pinched particularly at plugs, convenience receptacles, and the point where they exit from the apparatus.
11. Only use attachments/accessories specified by the manufacturer.
12. Use only with a cart, stand, tripod, bracket, or table specified by the manufacturer, or sold with the apparatus. When a cart is used, use caution when moving the cart/apparatus combination to avoid injury from tip-over.
13. Unplug this apparatus during lightning storms or when unused for long periods of time.
14. Refer all servicing to qualified service personnel. Servicing is required when the apparatus has been damaged in any way, such as power-supply cord or plug is damaged, liquid has been spilled or objects have fallen into the apparatus, the apparatus has been exposed to rain or moisture, does not operate normally, or has been dropped.



FCC Warnings

NOTE: This equipment has been tested and found to comply with the limits for a Class B digital device, pursuant to Part 15 of the FCC Rules. These limits are designed to provide reasonable protection against harmful interference in a residential installation. This equipment generates, uses, and can radiate radio frequency energy and, if not installed and used in accordance with the instructions, may cause harmful interference to radio communications. However, there is no guarantee that interference will not occur in a particular installation. If this equipment does cause harmful interference to radio or television reception, which can be determined by turning the equipment off and on, the user is encouraged to try to correct the interference by one or more of the following measures:

- Reorient or relocate the receiving antenna.
- Increase the separation between the equipment and receiver.
- Connect the equipment into an outlet on a circuit different from that to which the receiver is connected.
- Consult the dealer or an experienced radio/TV technician for help.

Additional Warnings

- The apparatus shall not be exposed to dripping or splashing and that no objects filled with liquids, such as vases, shall be placed on apparatus.
L'appareil ne doit pas être exposé aux écoulements ou aux éclaboussures et aucun objet ne contenant de liquide, tel qu'un vase, ne doit être placé sur l'objet.
- Main plug is used as disconnect device and it should remain readily operable during intended use. In order to disconnect the apparatus from the mains completely, the mains plug should be disconnected from the mains socket outlet completely.
La prise du secteur ne doit pas être obstruée ou doit être facilement accessible pendant son utilisation. Pour être complètement déconnecté de l'alimentation d'entrée, la prise doit être débranchée du secteur.
- Battery shall not be exposed to excessive heat such as sunshine, fire or the like.
Les piles ne doivent pas être exposées à de forte chaleur, tel qu'à la lumière du soleil, au feu ou autres choses de semblable.
- Caution marking is located at the bottom of apparatus.
Les précautions d'emploi sont inscrites en bas de l'appareil.
- The marking information is located at the bottom of apparatus.
Les marquages sont inscrits en bas de l'appareil.

7" DIGITAL PHOTO FRAME

Features

- 7" LCD color display
- Memory card expansion slot - SD/MMC
- Portrait or landscape
- Image compatibility: JPEG
- Resolution: 480 X 234
- Auto-slide show
- Thumbnail view
- Auto ON/OFF timer option
- 7 pre-loaded pictures
- Black frame and adjustable easel
- 16MB installed flash memory
- USB 2.0 full speed
- AC powered: AC/DC adapter included

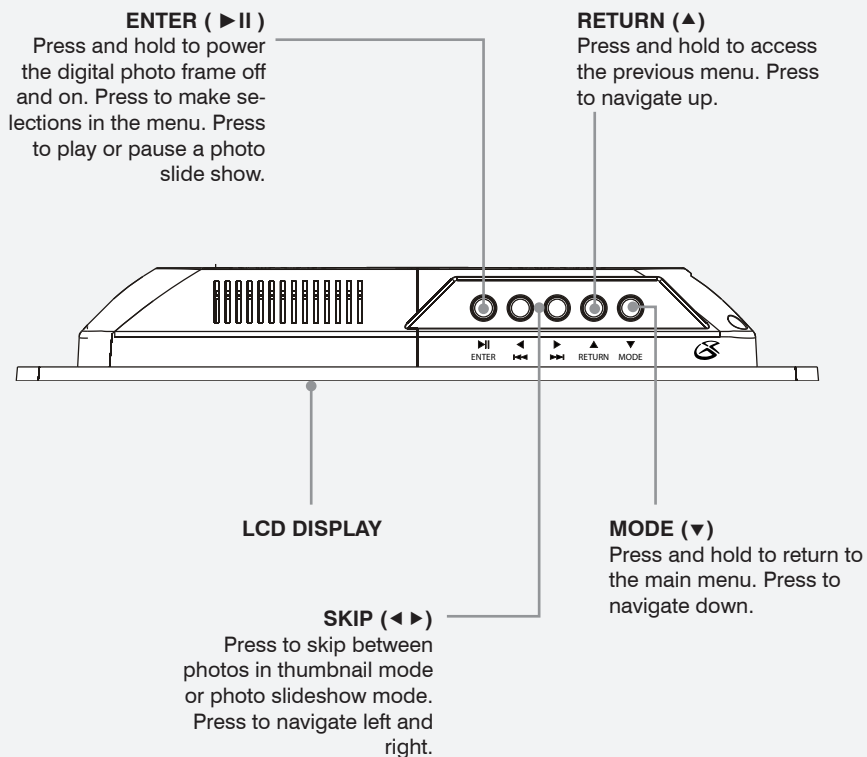
Included

- PF719
- Removable Easel
- AC/DC Adapter

TABLE OF CONTENTS

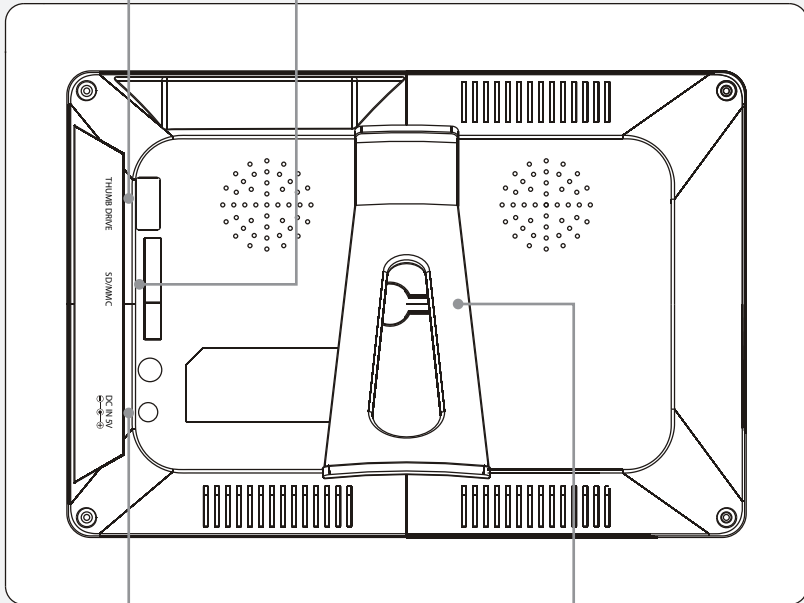
INTRODUCTION	6
SETUP	8
CLOCK & CALENDAR	9
PHOTOS	10
SETUP MENU	12
AUTO-POWER	14
COMPANY INFORMATION	16

INTRODUCTION



**USB INPUT
(THUMBDRIVE or
FLASH DRIVE ONLY)**

**SD/MMC Memory Card
Expansion Slot**



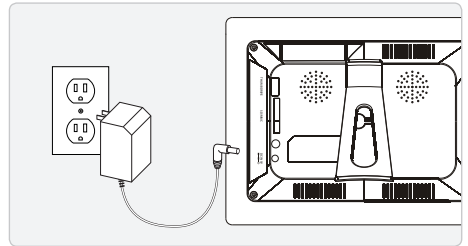
POWER INPUT

EASEL

SETUP

Power

Plug the included AC/DC adapter into the **POWER INPUT** on the digital photo frame, and a standard AC power outlet to power the digital photo frame.



Easel Setup

The Easel on the back of the unit can be attached so that the digital photo frame sits in either landscape mode or portrait mode.

Wall Mount Setup

The Easel must be removed from the digital photo frame when mounting it to a wall.

Use one of the two Easel connections on the back of the unit to hang the digital photo frame on a nail or a screw.

It is recommended that you only hang the digital photo frame on a nail or screw that is securely driven into a wall stud.

Setting the Clock

- 1 From the main menu, highlight the Clock icon using the arrow (▲▼▶◀) buttons. Press the **ENTER (▶||)** button.
*To access the main menu, press and hold the **MODE** button.*
- 2 Press the arrow (▲▼▶◀) buttons to highlight "Set Time". Press the **ENTER (▶||)** button.
- 3 Press the left and right arrow (◀▶) buttons to switch between hour, minute, and second.
- 4 Press the up and down arrow buttons (▲▼) to adjust the hour, minute, and second.
- 5 Highlight "OK" and press the **ENTER (▶||)** button to set the adjusted time.

Setting the Calendar

- 1 From the main menu, highlight the Calendar icon using the arrow (▲▼▶◀) buttons. Press the **ENTER (▶||)** button.
*To access the main menu, press and hold the **MODE** button.*
- 2 Press the arrow (▲▼▶◀) buttons to highlight "Set Date". Press the **ENTER (▶||)** button.
- 3 Press the left and right arrow (◀▶) buttons to switch between year, month, and date.
- 4 Press the up and down arrow buttons (▲▼) to adjust the year, month, and date.
- 5 Highlight "OK" and press the **ENTER (▶||)** button to set the adjusted date.

Displaying the Clock & Calendar

- 1 From the main menu, press and hold the **MODE** button once to display the Calendar. Press and hold the **MODE** button with the calendar displayed to view the clock.

*To access the main menu, press and hold the **MODE** button.*

PHOTOS

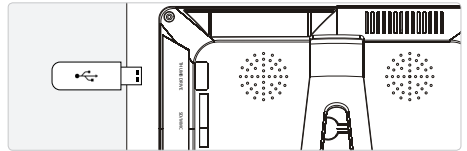
Loading Photos

Photos can be loaded onto the unit from three different source, a USB thumb/flash drive, a SD memory card, or an MMC memory card.

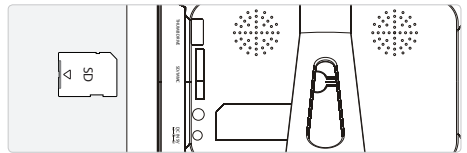
FILE REQUIREMENT: JPEG

- 1 Connect a USB thumb/flash drive to the digital photo frame.
- 2 From the main menu, highlight the Photo icon using the arrow (▲▼▶◀) buttons. Press the **ENTER (▶||)** button.

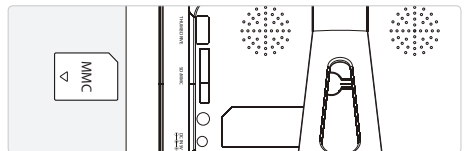
*To access the main menu, press and hold the **MODE** button.*



USB Thumb/Flash Drive



SD Memory Card



MMC Memory Card

Saving Photos to the Frame

- 1 Connect a USB thumb/flash drive to the digital photo frame.
- 2 From the main menu, highlight the Copy/Delete icon using the arrow (▲▼▶◀) buttons. Press the **ENTER (▶||)** button.

*To access the main menu, press and hold the **MODE** button.*

- 3 Select "Copy", and press the **ENTER (▶||)** button.
- 4 Select the image you wish to copy, and press the **ENTER (▶||)** button.
- 5 Highlight "Save", and press the **ENTER (▶||)** button.

Copied photos can be accessed by going to the main menu, then selecting "Memory".

Playing a Photo Slideshow

- 1 From the main menu, highlight the Photo icon to view photos from a connected Thumb Drive, SD Card, or MMC Card. Highlight the Memory icon to view photos stored on the digital photo frame. Press the **ENTER (► ||)** button.

*To access the main menu, press and hold the **MODE** button.*

- 2 Press and hold the **RETURN (▲)** button to view photos in Thumbnail mode.
- 3 Press the **ENTER (► ||)** button to begin playing a photo slideshow.

SETUP MENU

Opening the Setup Menu

1 From the main menu, highlight the Setup icon using the arrow (▲▼▶◀) buttons. Press the **ENTER (▶||)** button.

*To access the main menu, press and hold the **MODE** button.*

This will give you access to the setup menu.

Setup Menu Map

Photo Setting

- Interval Time
- Transition Effect
- Show Type
- Browse

Auto-play

- Slide

Display Setup

- TFT Brightness
- TFT Contrast
- TFT Saturation

Custom Setup

- OSD Language
- Style
- Media
- Default

Exit

AUTO-POWER

Auto-Power

- 1 From the main menu, highlight the Auto Power icon using the arrow (▲▼▶◀) buttons. Press the **ENTER (▶II)** button.

*To access the main menu, press and hold the **MODE** button.*

- 2 Highlight "Set Time" and press the **ENTER (▶II)** button.
- 3 Select Power On to set a time for the digital photo frame to turn on. Select Power Off to set a time for the digital photo frame to turn off. Press the **ENTER (▶II)** button.
- 4 Press the left and right arrow (◀▶) buttons to switch between hour and minute.
- 5 Press the up and down arrow buttons (▲▼) to adjust the hour and minute.
- 6 After the desired time is set, highlight the "OK" button and press the **ENTER (▶II)** button.
- 7 If you set "Power On", highlight "Power On Enable". If you set "Power Off", highlight "Power Off Enable". Press the **ENTER (▶II)** button.
- 8 Highlight "On" and press the **ENTER (▶II)** button to enable to set auto-power timer.

Disabling the Auto-Power

- 1 To cancel the auto power on or off setting, highlight "Power On Enable" or "Power Off Enable", depending on which is set, and press the **ENTER (► II)** button.
- 2 Highlight "Off" and press the **ENTER (► II)** button to disable to auto-power timer.

COMPANY INFORMATION

Green Initiative

Environmental Commitment to 'Protect for Today and Sustain for Tomorrow'

2009 marks the official launch of DPI, Inc.'s corporate campaign for a greener and cleaner world. DPI and its four brands, iLive, WeatherX, Capri, and GPX, are building upon environmental initiatives introduced at all of their facilities to help formulate and sustain significant and important conservation efforts within its manufacturing and marketing communities. In addition to targeting and selecting energy efficient product features, and structuring 'green office' procedures, other initial program efforts include:

- Reduction of all packaging sizes
- Recyclable plastics for clamshell packages, with a plan to eventually replace plastic with recyclable paper
- Recycled fiber board in place of the polyfoam in packing boxes
- Recycled plastics in place of the virgin material in product construction

International Support

To download this User's Guide in English, Spanish, or French, visit the support section at www.gpx.com.

Para transferir esta guía de usuario en inglés, español, o francés, visite la sección de la ayuda en www.gpx.com.

Pour télécharger ce guide de l'utilisateur en anglais, espagnol, ou français, visitez la section de soutien chez www.gpx.com.

Contact Information

Address: 2116 Carr Street, St. Louis MO, 63106

Phone: 1-314-621-2881

Fax: 1-314-588-1805

Email: prodinfo@gpx.com

Parts Email: partsinfo@dpi-global.com

Website: www.gpx.com

Free Manuals Download Website

<http://myh66.com>

<http://usermanuals.us>

<http://www.somanuals.com>

<http://www.4manuals.cc>

<http://www.manual-lib.com>

<http://www.404manual.com>

<http://www.luxmanual.com>

<http://aubethermostatmanual.com>

Golf course search by state

<http://golfingnear.com>

Email search by domain

<http://emailbydomain.com>

Auto manuals search

<http://auto.somanuals.com>

TV manuals search

<http://tv.somanuals.com>