



USER'S GUIDE  
V:0843-0830-10



# PD901

## Portable DVD Player

For the most up-to-date version of this User's Guide, go to [www.gpx.com](http://www.gpx.com)

# Warnings and Precautions

- **CAUTION:** TO PREVENT ELECTRIC SHOCK, MATCH WIDE BLADE OF PLUG TO WIDE SLOT, FULLY INSERT.
- **WARNING:** To reduce the risk of fire or electric shock, do not expose this apparatus to rain or moisture.
- **AVERTISSEMENT:** Pour réduire le risque d'incendie ou de choc électrique, ne pas exposer cet appareil sous la pluie et l'humidité.
- **CAUTION:** Use of any controls or adjustments or performance of procedures other than those herein specified may result in hazardous radiation exposure.
- **WARNING:** Changes or modifications to this unit not expressly approved by the party responsible for compliance could void the user's authority to operate the equipment.
- **WARNING:** Do not place the unit on top of any soft, porous, or sensitive surfaces to avoid damaging the surface. Use a protective barrier between the unit and surface to protect the surface.
- **WARNING:** Use of this unit near fluorescent lighting may cause interference regarding use of the remote. If the unit is displaying erratic behavior move away from any fluorescent lighting, as it may be the cause.
- **CAUTION:** Danger of explosion if battery is incorrectly replaced. Replace only with the same or equivalent type.
- **PRÉCAUTION:** Danger d'explosion si les piles sont remplacées de façon incorrect. Remplacer les piles seulement par le même type de pile ou l'équivalent.
- **WARNING:** There is a danger of explosion if you attempt to charge standard Alkaline batteries in the unit. Only use rechargeable NiMH batteries.
- **WARNING:** The remote control's button cell battery contains mercury. Do not put in the trash, instead recycle or dispose of as hazardous waste

- **WARNING:** Lithium batteries, like all rechargeable batteries are recyclable and should be recycled or disposed of in normal household waste. Contact your local government for disposal or recycling practices in your area. They should never be incinerated since they might explode.
- **WARNING:** Shock hazard - Do Not Open.
- **AVIS: RISQUE DE CHOC ÉLECTRIQUE - NE PAS OUVRI**

Mains plug is used as disconnect device and it should remain readily operable during intended use. In order to disconnect the apparatus from the mains completely, the mains plug should be disconnected from the mains socket outlet completely.  
*La prise du secteur est utilisé pour déconnecter le système.*  
*La prise du secteur ne doit pas être obstruée ou doit être facilement accessible pendant son utilisation. Pour être complètement déconnecté de l'alimentation d'entrée, la prise doit être débranchée du secteur.*

Do not mix old and new batteries.  
 Do not mix alkaline, standard (carbon-zinc), or rechargeable (ni-cad, ni-mh, etc) batteries.  
*No mezcle baterias viejas y nuevas.*  
*No mezcle baterias alcalinas, estándar (carbono-zinc) o recargables (ni-cad, ni-mh, etc.).*



**WARNING:** TO REDUCE THE RISK OF ELECTRIC SHOCK, DO NOT REMOVE COVER (OR BACK). NO USER-SERVICEABLE PARTS INSIDE. REFER SERVICING TO QUALIFIED SERVICE PERSONNEL.



The lightning flash with arrowhead symbol, within an equilateral triangle, is intended to alert the user to the presence of uninsulated "dangerous voltage" within the product's enclosure that may be of sufficient magnitude to constitute a risk of electric shock to persons.




The exclamation point within an equilateral triangle is intended to alert the user to the presence of important operating and maintenance (servicing) instructions in the literature accompanying the appliance.



This product utilizes a Class 1 laser to read Compact Discs. This laser Compact Disc Player is equipped with safety switches to avoid exposure when the CD door is open and the safety interlocks are defeated. Invisible laser radiation is present when the CD Player's lid is open and the system's interlock has failed or been defeated. It is very important that you avoid direct exposure to the laser beam at all times. Please do not attempt to defeat or bypass the safety switches.

# Important Safety Instructions

1. Read these Instructions.
2. Keep these Instructions.
3. Heed all Warnings.
4. Follow all instructions.
5. Do not use this apparatus near water.
6. Clean only with a dry cloth.
7. Do not block any ventilation openings. Install in accordance with the manufacturer's instructions.
8. Do not install near any heat sources such as radiators, heat registers, stoves, or other apparatus (including amplifiers) that produce heat.
9. Do not defeat the safety purpose of the polarized or grounding - type plug. A polarized plug has two blades with one wider than the other. A grounding type plug has two blades and a third grounding prong. The wide blade or the third prong are provided for your safety. When the provided plug does not fit into your outlet, consult an electrician for replacement of the obsolete outlet.
10. Protect the power cord from being walked on or pinched particularly at plugs, convenience receptacles, and the point where they exit from the apparatus.
11. Only use attachments/accessories specified by the manufacturer.
12.  Use only with a cart, stand, tripod, bracket, or table specified by the manufacturer, or sold with the apparatus. When a cart is used, use caution when moving the cart/apparatus combination to avoid injury from tip-over.
13. Unplug this apparatus during lightning storms or when unused for long periods of time.
14. Refer all servicing to qualified service personnel. Servicing is required when the apparatus has been damaged in any way, such as power-supply cord or plug is damaged, liquid has been spilled or objects have fallen into the apparatus, the apparatus has been exposed to rain or moisture, does not operate normally, or has been dropped.

## FCC Warnings

**WARNING:** Changes or modifications to this unit not expressly approved by the party responsible for compliance could void the user's authority to operate the equipment.

**NOTE:** This equipment has been tested and found to comply with the limits for a Class B digital device, pursuant to Part 15 of the FCC Rules. These limits are designed to provide reasonable protection against harmful interference in a residential installation. This equipment generates, uses, and can radiate radio frequency energy and, if not installed and used in accordance with the instructions, may cause harmful interference to radio communications. However, there is no guarantee that interference will not occur in a particular installation. If this equipment does cause harmful interference to radio or television reception, which can be determined by turning the equipment off and on, the user is encouraged to try to correct the interference by one or more of the following measures:

- Reorient or relocate the receiving antenna.
- Increase the separation between the equipment and receiver.
- Connect the equipment into an outlet on a circuit different from that to which the receiver is connected.
- Consult the dealer or an experienced radio/TV technician for help.

## Additional Warnings

- The apparatus shall not be exposed to dripping or splashing and that no objects filled with liquids, such as vases, shall be placed on apparatus.  
*L'appareil ne doit pas être exposé aux écoulements ou aux éclaboussures et aucun objet ne contenant de liquide, tel qu'un vase, ne doit être placé sur l'objet.*
- Main plug is used as disconnect device and it should remain readily operable during intended use. In order to disconnect the apparatus from the mains completely, the mains plug should be disconnected from the mains socket outlet completely.  
*La prise du secteur ne doit pas être obstruée ou doit être facilement accessible pendant son utilisation. Pour être complètement déconnecté de l'alimentation d'entrée, la prise doit être débranchée du secteur.*
- Battery shall not be exposed to excessive heat such as sunshine, fire or the like.  
*Les piles ne doivent pas être exposées à de forte chaleur, tel qu'à la lumière du soleil, au feu ou autres choses de semblable.*
- Caution marking is located at the rear or back of the apparatus.  
*Attention marquage est situé à l'arrière ou à l'arrière de l'appareil*
- The marking information is located at the rear or back of apparatus.  
*Les informations de marquage est situé à l'arrière ou à l'arrière de l'appareil.*



This symbol indicates that this product incorporates double insulation between hazardous mains voltage and user accessible parts.

This product incorporates copyright protection technology that is protected by U.S. patents and other intellectual property rights. Use of this copyright protection technology must be authorized by Rovi Corporation, and is intended for home and other limited viewing uses only unless otherwise authorized by Rovi Corporation. Reverse engineering and disassembly are prohibited.

## Portable DVD Player

### Features

- 9" LCD display
- Swivel screen
- Aspect ratio: 16:9
- Display resolution: 640 x 220
- DVD player: DVD, DVD±R/RW
- CD player: CD, CD-R, JPEG CD
- Multi-language on-screen display: English, French, Spanish
- 3.5mm audio/video output
- Stereo headphone jack
- Built-in speakers
- Remote control
- DC power input: requires an AC/DC adapter (included)
- DC battery power: built-in rechargeable battery

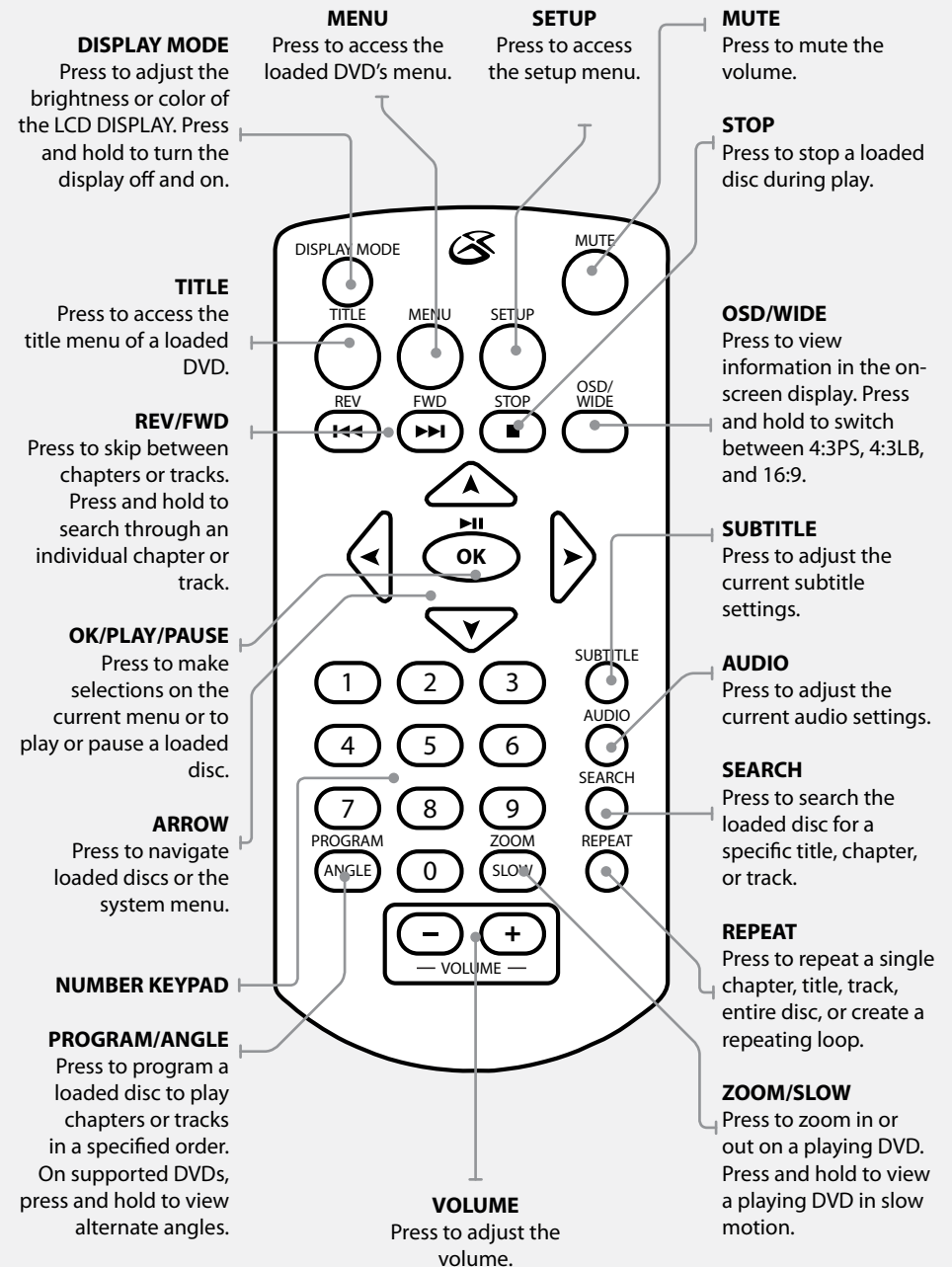
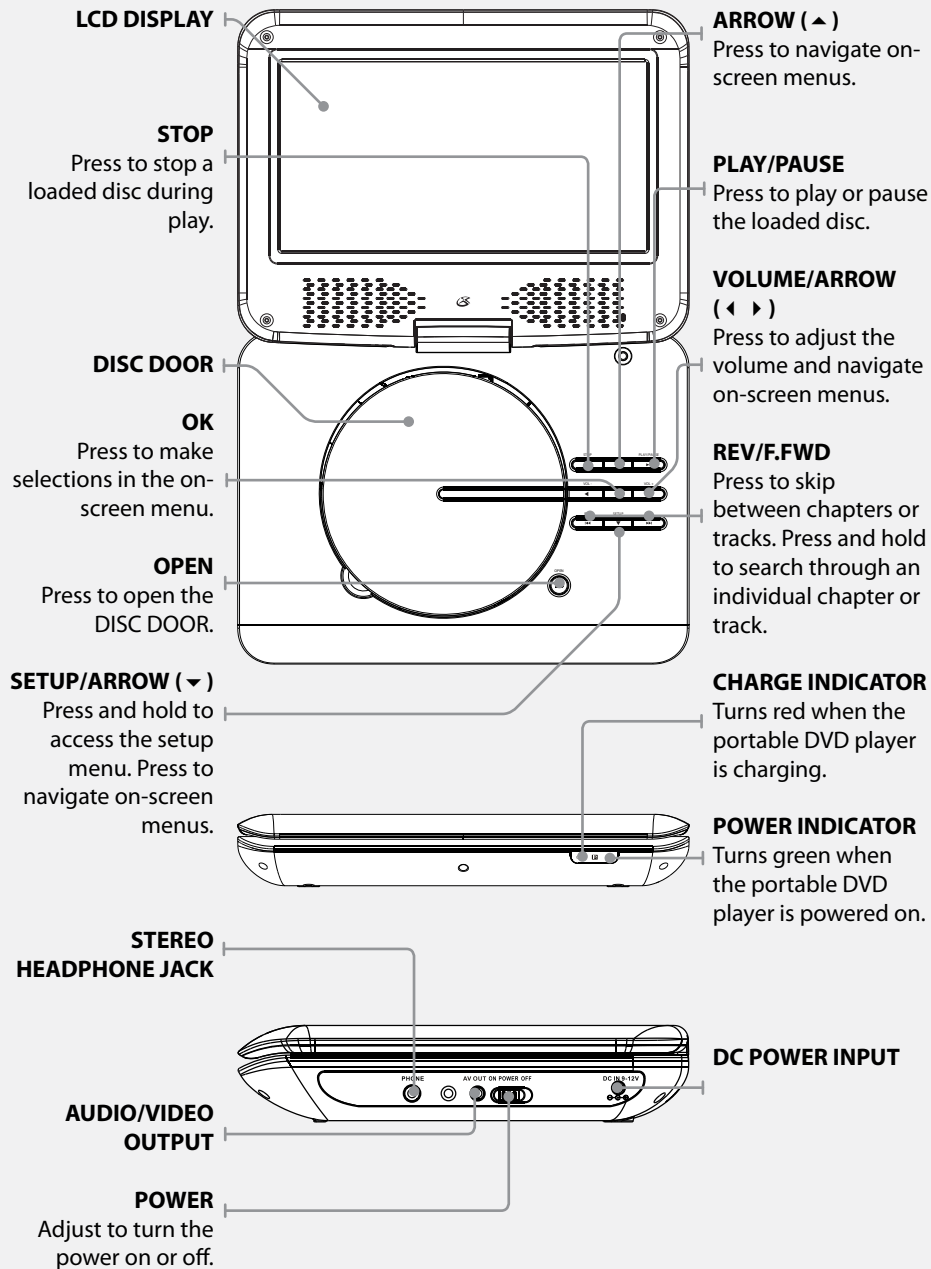
### Included

- AC/DC adapter
- DC Car adapter
- Remote control: requires 2 AAA batteries (included)
- One set of stereo earbuds
- 3.5mm to 3 x RCA A/V adapter
- Warranty card
- User's guide

## Table of Contents

Portable DVD Player .....	4
Features	
Included	
Table of Contents .....	5
Introduction .....	6
Setup .....	8
Power	
Battery Power	
Remote	
Charging the Built-in Battery	
DVD and CD .....	9
Loading a Disc	
Playing a Loaded Disc	
Programming a Loaded Disc	
Setup Menu .....	10
Accessing the Setup Menu	
Setup Menu Contents	
Audio/Video Output .....	11
Using the 3.5mm Audio/Video Output	
Company Information .....	12
International Support	
Contact Information	
Green Initiative	

## Introduction

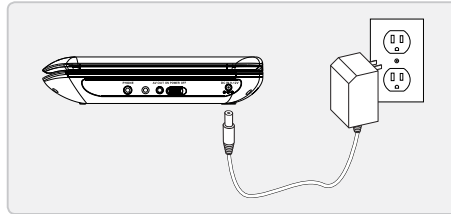


## Setup

### Power

DC power input: requires an AC/DC adapter (included)

The **POWER INDICATOR** will turn green whenever the portable DVD player is powered on.



### Battery Power

DC battery power: built-in rechargeable battery

The **CHARGE INDICATOR** will turn red whenever the built-in rechargeable battery is charging.

The **POWER INDICATOR** will turn green whenever the portable DVD player is powered on.

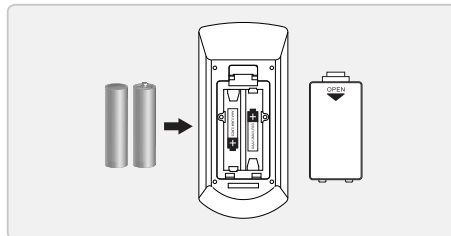
### Charging the Built-in Battery

1. Plug the included AC/DC power adapter into the **DC POWER INPUT** on the portable DVD player and an AC power outlet.
2. Adjust the **POWER** switch to the off position.

The **CHARGE INDICATOR** will turn red whenever the built-in rechargeable battery is charging.

### Remote

Requires 2 AAA batteries (included)

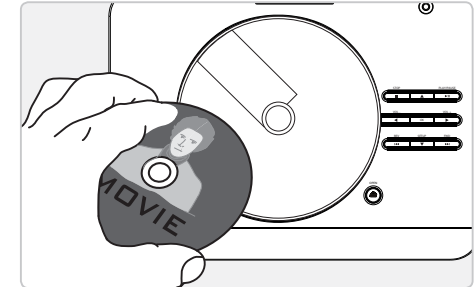


## DVD and CD

### Loading a Disc

1. Press the **OPEN** button to open the **DISC DOOR**.
2. Load a disc into the portable DVD player, label side facing up.
3. Close the **DISC DOOR**.

After a disc is loaded, it will begin playing automatically.



### Playing a Loaded Disc

1. Follow the instructions for [Loading a Disc](#).
2. If the disc does not begin playing automatically, press the **PLAY/PAUSE** button.

### Programming a Loaded Disc

1. Follow the instructions for [Loading a Disc](#) and [Playing a Loaded Disc](#).
2. While the loaded disc is playing, press the **PROGRAM** button on the remote.
3. Use the **ARROW** buttons to select a program slot.
4. Use the **NUMBER KEYPAD** to enter in the chapter and title, or track.

Titles and chapters, or tracks will play in the order they are listed.

5. Repeat step 3 until the desired titles and chapters, or tracks are programmed.
6. Use the **ARROW** buttons to highlight the on-screen PLAY button. Press the **OK** button to begin playing the programmed disc.

## Setup Menu

### Accessing the Setup Menu

1. Press and hold the **SETUP** button to access the setup menu.

### Setup Menu Contents

#### System Setup

TV System

- NTSC
- PAL

Screen Saver

- ON
- OFF

TV Type

- 4:3PS
- 4:3LB
- 16:9

Default

- Restore

#### Language Setup

OSD Language

- Use to adjust the on-screen display language.

Audio Lang

- Use to adjust the audio language of the loaded DVD.

Subtitle Lang

- Use to adjust the subtitle language of the loaded DVD.

Menu Lang

- Use to adjust the DVD menu language of the loaded DVD.

#### Video Setup

Brightness

Contrast

Hue

Saturation

#### Speaker Setup

Downmix

- LT/RT
- Stereo

## Audio/Video Output

### Using the 3.5mm Audio/Video Output

Requires a 3.5mm to 3 x RCA audio/video adapter (included) and an RCA audio/video cable (not included).

1. Connect the 3.5mm to 3 x RCA audio/video adapter to the **3.5mm AUDIO/VIDEO OUTPUT** on the portable DVD player.
2. Connect the RCA audio/video cable to the 3.5mm to 3 x RCA audio/video adapter and the RCA stereo audio inputs and composite video input on a television.
3. Audio and video played through the portable DVD player will now be output through the connected television.

## Company Information

### International Support

To download this User's Guide in English, Spanish, or French, visit the support section at [www.gpx.com](http://www.gpx.com).

Para transferir esta guía de usuario en inglés, español, o francés, visite la sección de la ayuda en [www.gpx.com](http://www.gpx.com).

Pour télécharger ce guide de l'utilisateur en anglais, espagnol, ou français, visitez la section de soutien chez [www.gpx.com](http://www.gpx.com).

### Contact Information

**Phone:** 1-888-999-4215

**Email:** [prodinfo@gpx.com](mailto:prodinfo@gpx.com)

**Parts Email:** [partsinfo@dpi-global.com](mailto:partsinfo@dpi-global.com)

**Website:** [www.gpx.com](http://www.gpx.com)

### Green Initiative



Environmental Commitment to 'Protect for Today and Sustain for Tomorrow'

2009 marked the official launch of DPI, Inc.'s corporate campaign for a greener and cleaner world. DPI is building upon environmental initiatives introduced at all of their facilities to help formulate and sustain significant and important conservation efforts within its manufacturing and marketing communities. In addition to targeting and selecting energy efficient product features, and structuring 'green office' procedures, other initial program efforts include:

- Reduction of all packaging sizes
- Recyclable plastics for clamshell packages, with a plan to eventually replace plastic with recyclable paper
- Recycled fiber board in place of the polyfoam in packing boxes
- Recycled plastics in place of the virgin material in product construction

## Free Manuals Download Website

<http://myh66.com>

<http://usermanuals.us>

<http://www.somanuals.com>

<http://www.4manuals.cc>

<http://www.manual-lib.com>

<http://www.404manual.com>

<http://www.luxmanual.com>

<http://aubethermostatmanual.com>

Golf course search by state

<http://golfingnear.com>

Email search by domain

<http://emailbydomain.com>

Auto manuals search

<http://auto.somanuals.com>

TV manuals search

<http://tv.somanuals.com>