

GMC[®]

GLOBAL MACHINERY COMPANY

INSTRUCTION MANUAL

Detail Sander



2 YEAR
REPLACEMENT
WARRANTY

30 DAY
SATISFACTION
GUARANTEE

• Melbourne • Perth • Auckland • Hong Kong • Shanghai
• Taipei • New York • Verona • London • Paris

SA120
050526 ED3 JJ

Contents

Warranty	2
Introduction	3
Environmental protection	3
Description of symbols	3
Specifications	3
Safety instructions	4
Additional safety rules for sanders	5
Contents of carton	6
Know your product	7
Unpacking	8
Switching on and off	8
Adjusting the speed	8
Changing and rotating the sanding base	8
Selecting the right grade of sandpaper	9
Attaching a sanding sheet	9
Sanding	9
Dust extraction	9
Maintenance	10
General inspection	10
Power cord maintenance	10

Full 2 Years Home Use Warranty

Whilst every effort is made to ensure your complete satisfaction with this tool, occasionally, due to the mass manufacturing techniques, a tool may not live up to our required level of performance and you may need the assistance of our service department.

This product is warranted for a 2-year period for home domestic use from the date of the original purchase. If found to be defective in materials or workmanship, the tool or the offending faulty component will be replaced free of charge with another of the same item. A small freight charge may apply.

The warranty replacement unit is only made available by returning the tool to the place of purchase with a confirmed register receipt. Proof of purchase is essential. We reserve the right to reject any claim where the purchase cannot be verified.

This warranty does not include damage or defects to the tool caused by or resulting from abuse, accidents, alterations or commercial or business use.

It also does not cover any bonus accessories unless the tool is a GMC Platinum Professional model.

Please ensure that you store your receipt in a safe place. Conditions apply to the above warranty.

If you need direction of what constitutes a free of charge warranty claim, please review the guide given on the rear of the Receipt Holder. An indication is given as to the types of claim that are permissible, and those that are not.



Dear Customer

If you require any help with your product, whether it is a Warranty claim, spare part or user information, please phone our Help Line for an immediate response. Phone 1300 880 001 in Australia or 0800 445 721 in New Zealand.

Introduction

Your new GMC power tool will more than satisfy your expectations. It has been manufactured under stringent GMC Quality Standards to meet superior performance criteria.

You will find your new tool easy and safe to operate, and, with proper care, it will give you many years of dependable service.

CAUTION. Carefully read through this entire Instruction Manual before using your new GMC Power Tool. Take special care to heed the Cautions and Warnings.

Your GMC power tool has many features that will make your job faster and easier. Safety, performance, and dependability have been given top priority in the development of this tool, making it easy to maintain and operate.

Environmental protection



Recycle unwanted materials instead of disposing of them as waste. All tools, hoses and packaging should be sorted, taken to the local recycling centre and disposed of in an environmentally safe way.

Description of symbols

The rating plate on your tool may show symbols. These represent important information about the product or instructions on its use.



Wear hearing protection.

Wear eye protection.

Wear breathing protection.



Double insulated for additional protection.



N380

Conforms to relevant standards for electromagnetic compatibility.

Specifications

<i>Voltage:</i>	<i>230-240V ~ 50Hz</i>
<i>Power rating:</i>	<i>260W</i>
<i>No load speed:</i>	<i>6000–10,000 min⁻¹</i>
<i>Sandpaper type:</i>	<i>hook and loop</i>
<i>Base size:</i>	<i>90mm x 90mm x 90mm</i>
<i>Paper size:</i>	<i>92mm x 92mm x 92mm</i>
<i>Orbital diameter:</i>	<i>2mm</i>
<i>Net weight:</i>	<i>1.6kg</i>
<i>Sound pressure level:</i>	<i>81.3 dB(A)</i>

Safety instructions

WARNING. Read and understand all instructions. Failure to follow all instructions listed below may result in electric shock, fire and/or serious injury. The term "power tool" in all of the warnings below refers to your mains-operated (corded) power tool or battery-operated (cordless) power tool.

Save these instructions

Work area

- **Keep work area clean and well lit.** Cluttered and dark areas invite accidents.
- **Do not operate power tools in explosive atmospheres, such as in the presence of flammable liquids, gases, or dust.** Power tools create sparks which may ignite the dust or fumes.
- **Keep children and bystanders away while operating a power tool.** Distractions can cause you to lose control.

Electrical safety

- **Power tool plugs must match the outlet.** Never modify the plug in any way. Do not use any adapter plugs with earthed (grounded) power tools. Unmodified plugs and matching outlets will reduce risk of electric shock.
- **Avoid body contact with earthed or grounded surfaces such as pipes, radiators, ranges and refrigerators.** There is an increased risk of electric shock if your body is earthed or grounded.
- **Do not expose power tools to rain or wet conditions.** Water entering a power tool will increase the risk of electric shock.
- **Do not abuse the cord.** Never use the cord for carrying, pulling or unplugging the power tool. Keep cord away from heat, oil, sharp edges or moving parts. Damaged or entangled cords increase the risk of electric shock.
- **When operating a power tool outdoors, use an outdoor extension cord suitable for outdoor use.** Use of a cord suitable for outdoor use reduces the risk of electric shock.

Personal safety

- **Stay alert, watch what you are doing and use common sense when operating a power tool.** Do not use a power tool while you are tired or under the influence of drugs, alcohol, or medication. A moment of inattention while operating power tools may result in serious personal injury.
- **Use safety equipment.** Always wear eye protection. Safety equipment such as a dust mask, non-skid safety shoes, hard hat, or hearing protection used for appropriate conditions will reduce personal injuries.
- **Avoid accidental starting.** Ensure the switch is in the off-position before plugging in. Carrying power tools with your finger on the switch or plugging in power tools that have the switch on invites accidents.
- **Remove any adjusting key or wrench before turning the tool on.** A wrench or a key that is left attached to a rotating part of the power tool may result in personal injury.
- **Do not overreach.** Keep proper footing and balance at all times. This enables better control of the power tool in unexpected situations.
- **Dress properly.** Do not wear loose clothing or jewellery. Keep your hair, clothing and gloves away from moving parts. Loose clothes, jewellery or long hair can be caught in moving parts.
- **If devices are provided for the connection of dust extraction and collection facilities ensure that these are connected and properly used.** Use of these devices can reduce dust-related hazards.

Power tool use and care

- **Do not force the power tool. Use the correct power tool for your application.** The correct power tool will do the job better and safer at the rate for which it was designed.


- **Do not use the power tool if the switch does not turn it on and off.** Any power tool that cannot be controlled with the switch is dangerous and must be repaired.
- **Disconnect the plug from the power source before making any adjustments, changing accessories, or storing power tools.** Such preventive safety measures reduce the risk of starting the power tool accidentally.
- **Store idle power tools out of the reach of children and do not allow persons unfamiliar with the power tool or these instructions to operate the power tool.** Power tools are dangerous in the hands of untrained users.
- **Maintain power tools.** Check for misalignment or binding of moving parts, breakage of parts and any other condition that may affect the power tool's operation. If damaged, have the power tool repaired before use. Many accidents are caused by poorly maintained power tools.
- **Keep cutting tools sharp and clean.** Properly maintained cutting tools with sharp cutting edges are less likely to bind and are easier to control.
- **Use the power tool, accessories and tool bits etc., in accordance with these instructions and in the manner intended for the particular type of power tool, taking into account the working conditions and the work to be performed.** Use of the power tool for operations different from intended could result in a hazardous situation.

Service

- **Have your power tool serviced by a qualified repair personnel using only identical replacement parts.** This will ensure that the safety of the power tool is maintained.

Additional safety rules for sanders

Remove the plug from the socket before carrying out any adjustment, servicing or maintenance.

- Fully unwind cable drum extensions to avoid potential overheating.
- When an extension cable is required, you must ensure it has the right ampere rating for your power tool and is in a safe electrical condition.
- Ensure your mains supply voltage is the same as your tool rating plate voltage.
- Your tool is double insulated  for additional protection against a possible electrical insulation failure within the tool.
- Always check walls, floors and ceilings to avoid hidden power cables and pipes.
- After long working periods external metal parts and accessories could be hot.
- Do not force the sander; let the tool do the work at a reasonable speed. Overloading will occur if too much pressure is applied and the motor slows resulting in inefficient sanding and possible damage to the sander motor.
- When sanding wood, always connect the dust extraction filter.
- Take special care to guard against harmful and toxic dusts when sanding lead-based painted surfaces, woods and metals, including the following:
 - All persons entering the work area must wear a mask specially designed for protection against toxic dust and fumes such as those arising from the sanding of lead paint .
 - Children and pregnant women must not enter the work area.
 - Do not eat, drink or smoke in the work area.

- *Before using the sander with metal always remove the extraction filter from the outlet as sparks may ignite the dust or the internal bag.*
- *Do not continue to use worn, torn or heavily clogged sanding sheets.*
- *Do not touch the moving sanding sheet.*
- *Ensure that you have removed foreign objects such as nails and screws from the work before commencing sanding.*
- *Rags, cloths, cord, string and the like should never be left around the work area.*

Wear goggles

Wear ear defenders

Wear a breathing mask

Contents of carton

- *10 Hook & loop detail point sanding sheets
(4 x 80G, 4 x 100G, 2 x 120G)*
- *10 Hook & loop finger extension sanding sheets
(4 x 80G, 4 x 100G, 2 x 120G)*
- *Dust extraction adaptor*
- *Allen key*
- *Instruction manual*

Know your product

1. Main handle
2. Body
3. On/off switch
4. Rotatable base
5. Variable speed control
6. Vacuum dust extraction port
7. Allen key
8. Finger sanding extension
9. Dust extraction adaptor



Unpacking

Due to modern mass production techniques, it is unlikely that your GMC Power Tool is faulty or that a part is missing. If you find anything wrong, do not operate the tool until the parts have been replaced or the fault has been rectified. Failure to do so could result in serious personal injury.

Switching on and off

1. Connect the plug to the power supply.
2. Slide the on/off switch (3) forward to the "I" position to start the sander. Slide the on/off switch backwards to the "O" position to stop the sander.
3. Do not switch on the tool when the sanding surface is on the work.

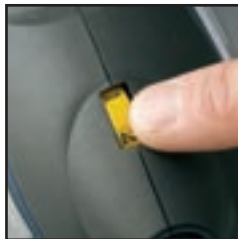


NOTE. Always lift the sander from the work before switching off.

Adjusting the speed

The speed can be adjusted to suit the material being sanded.

1. To adjust the speed, move the variable speed control (5) until you are satisfied that the speed is what you need for the job in hand.



Changing and rotating the sanding base

1. Using the allen key, remove the 3 outer screws from the existing base, and remove the base from the sander. You do not need to loosen the centre screw as this controls the movement of the whole base.
2. Place the finger sanding extension onto the sanding base. Using the allen key, secure the finger sanding extension in position with the 3 screws.
3. You can rotate the sanding base in three different positions. This assures maximum utilization of the sanding paper when using the sander in small, hard-to-reach spots. Simply loosen the screw in the centre of the sanding base, and rotate the base to the new position.



NOTE. To secure the new position, tighten the centre screw.

Selecting the right grade of sandpaper

Different grades of sanding paper can be purchased from your local hardware store. Available grades are: Coarse, Medium and Fine.

Use a coarse grit to sand down rough finishes, medium grit to smooth the work and fine grit to finish off.

It is best to make a trial run on a scrap piece of material to determine the optimum grades of sandpaper for a particular job.

Attaching a sanding sheet

WARNING. Always ensure that the tool is switched off and the plug is removed from the power point before making any adjustments or maintenance procedures.

1. Select the required grade of sandpaper.
2. Match the holes in a suitable sheet with the holes in the base (4) and press the sheet to the base to attach it. To remove the sheet, peel it away from the base.



WARNING. Do not continue to use the sander with a sanding sheet that is over worn or damaged.

WARNING. Do not use the same sanding sheet for wood and metal. Metal particles become embedded in the sandpaper and will scour a wooden surface.

GRIT CHART	
GRIT	TYPE
60 or less	Very Coarse
80 – 100	Coarse
120 – 150	Medium
180 – 220	Fine
240 or more	Very Fine

WARNING. Take care to regularly clean out the build up of dust on the base underneath the sandpaper and not to let the sandpaper wear completely down before replacing it. Failure to observe these two precautionary measures can lead to damage to the hooks and loops on the base and the sandpaper will not attach properly.

Sanding

The sander can be used for most sanding operations on materials such as wood, plastic, metal and painted surfaces.

NOTE. Wear safety goggles, a dust mask and ear defenders.

1. Move the sander over the surface of the work in a circular motion with an even, moderate pressure.

CAUTION. Where possible, clamp smaller workpieces to the bench.

- NOTE.** If there are still scratches on your work after sanding, try either of the following:
2. Go back to a coarser grit and sand the marks out before recommencing with the original choice or,
 3. Try using new sandpaper of the same grit to eliminate the unwanted marks before progressing to a finer grit and finishing the job.

Dust extraction

Connect a dust extraction system or a household vacuum cleaner to the vacuum dust extraction adaptor (9).



Maintenance

WARNING. Always ensure that the tool is switched off and the plug is removed from the power point before making any adjustments or maintenance procedures.

Keep the tool's air vents unclogged and clean at all times.

Regularly check to see if any dust or foreign matter has entered the grills near the motor and around the on/off switch. Use a soft brush to remove any accumulated dust. Wear safety glasses to protect your eyes whilst cleaning.

If the body of the tool needs cleaning, wipe it with a soft damp cloth. A mild detergent can be used but nothing like alcohol, petrol or other cleaning agent.

Never use caustic agents to clean plastic parts.

CAUTION. Water must never come into contact with the tool. Lubricate all moving parts at regular intervals.

General Inspection

Regularly check that all the fixing screws are tight. They may vibrate loose over time.

Power cord maintenance

If the supply cord needs replacing, the task must be carried out by the manufacturer, the manufacturer's agent, or an authorised service centre in order to avoid a safety hazard.

Carefully read the entire Instruction Manual before using this product.

**Before returning this product for a
Warranty Claim or any other reason
Please Call 1300 880 001 (Australia)
or 0800 445 721 (New Zealand)**

**When you make your call, please have
the following information at hand:**

- **GMC Product Type**
- **GMC Product Code**

A GMC Service Engineer will take your call and, in most cases, will be able to solve your problem over the phone.

You are welcome to use this phone-in service to make suggestions or give comments about any GMC product.

With continuing product development changes may have occurred which render the product received slightly different to that shown in this instruction manual. The manufacturer reserves the right to change specifications without notice. Note: Specifications may differ from country to country.



The GMC 777 Helpline operates from 7am to 7pm, 7 days a week (EST). This allows you to contact GMC directly with any queries and technical questions you have regarding our products.

GMC
GLOBAL MACHINERY COMPANY

45-55 South Centre Road
Melbourne Airport
Victoria, Australia 3045

Tel: (03) 8346 1100 Fax: (03) 8346 1200



Save this Manual for future reference.

Free Manuals Download Website

<http://myh66.com>

<http://usermanuals.us>

<http://www.somanuals.com>

<http://www.4manuals.cc>

<http://www.manual-lib.com>

<http://www.404manual.com>

<http://www.luxmanual.com>

<http://aubethermostatmanual.com>

Golf course search by state

<http://golfingnear.com>

Email search by domain

<http://emailbydomain.com>

Auto manuals search

<http://auto.somanuals.com>

TV manuals search

<http://tv.somanuals.com>