



User's Manual

3307568

Version 1.00

4/17/2007

Copyrights

This manual is copyrighted and all rights are reserved. It does not allow any non authorization in copied, photocopied, translated or reproduced to any electronic or machine readable form in whole or in part without prior written consent from the manufacturer.

In general, the manufacturer will not be liable for any direct, indirect, special, incidental or consequential damages arising from the use of inability to use the product or documentation, even if advised of the possibility of such damages. The manufacturer keeps the rights in the subject to change the contents of this manual without prior notices in order to improve the function design, performance, quality and reliability. The author assumes no responsibility for any errors or omissions, which may appear in this manual, nor does it make a commitment to update the information contained herein.

Trademarks

Intel is a registered trademark of Intel Corporation.

Award is a registered trademark of Award Software, Inc.

All other trademarks, products and or product's name mentioned herein are mentioned for identification purposes only, and may be trademarks and/or registered trademarks of their respective companies or owners.

Packing List

Please check package component before you use our products.

Hardware:

3307568 Full-Size CPU Card x 1

Cable Kit:



Floppy flat cable x 1



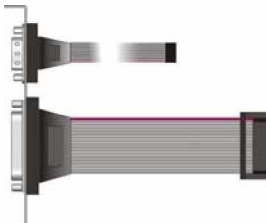
PS/2 Keyboard & Mouse Cable x 1



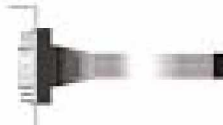
4-pin to 3-pin ATX cable x 1



SATA Cable x 6



DB25 & DB9 cable x 1

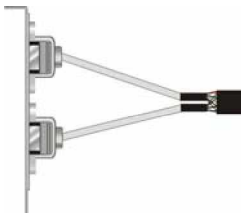


COM Port Cable x 1

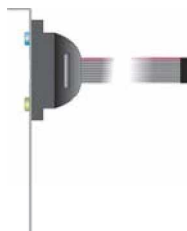


SATA Power Y Cable x 3

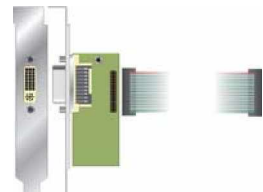
(3307568DG2/BXG2 Only)



USB cable x 2



Audio Port Cable x 1



DVI module with bracket x 1

(3307568A and B Only)

Other Accessories:

Divers CD (including User's Manual) x 1

RAID drivers Disc for Windows 2000, Windows XP and Windows Server 2003

Index

Chapter1 <Introduction>	7
1.1 <Product Overview>	7
1.2 <Product Specification>	8
1.3 <Block Diagram>	10
1.4 <Mechanical Drawing >	11
Chapter 2 <Hardware Setup>	12
2.1 <Connector Location>.....	12
2.2 <Jumper Reference>.....	13
2.3 <Connector Reference>.....	14
2.3.1 <Internal Connectors>	14
2.3.2 <External Connectors>	14
2.4 <CPU and Memory Setup>.....	15
2.4.1 <CPU installation>.....	15
2.4.2 <Memory installation>.....	16
2.5 <CMOS Setup>.....	17
2.6 <Serial ATA installation>.....	18
2.7 <LAN Interface>.....	19
2.8 <Onboard Display Interface>	20
2.8.1 <Analog Display>.....	20
2.8.2 <LVDS Display 3307568C & D Only >.....	21
2.8.3 <DVI Display 3307568A & B Only >.....	25
2.9 <Audio Installation>	26
2.11 <GPIO interface>	28
2.12 <USB2.0 Interface>	29
2.13 <Power and Fan Installation>	30
2.14 <Serial Port>.....	32
2.15 <Switch and Indicator>	34

Chapter 3 <System Configuration>	36
3.1 <SATA configuration>.....	36
3.2 <SATA RAID Configuration>	37
3.3 <Audio Configuration>	41
3.4 <Video Memory Setup>	42
3.5 <Display Properties Setting>.....	44
Chapter 4 <BIOS Setup>	46
Appendix A <I/O Port Pin Assignment>	48
A.1 <Serial ATA Port>.....	48
A.2 <IrDA Port>.....	48
A.3 <VGA Port>	49
A.4 <LAN Port>.....	49
Appedix B <System Resources>	50
Appedix C <Flash BIOS>	54
C.1 BIOS Auto Flash Tool.....	54
C.2 Flash Method	54
Appendix D <Programming GPIO's>	55
Appendix E <Watch Dog timer Setting >	56
Contact Information	57

(This Page is Left for Blank)

Chapter1 <Introduction>

1.1 <Product Overview>

3307568 is the Full-size single board computer with last Intel desktop technology with PICMG form factor. Based on Intel Q965 and ICH8DO, the board integrates a new Core 2 Duo processor 775-pin socket, DDR2 memory socket, Intel Graphic Media Accelerator 3000 technology, Serial ATA II with RAID function for a powerful desktop system.

Intel LGA775 processor

The Intel Core 2 Duo processor now comes with a new form factor with 775-pin PLGA package, for 533/800/1066MHz front-side-bus, 4MB L2 cache, and for 65nm manufacturing technology, the PLGA processor without pin header on solder side can make user installing the processor on the socket easier.

Intel Q965 and ICH8DO chipset

The Intel Q965 integrates DDR2 533/667/800MHz for memory, and Graphic Media Accelerator (GMA) 3000 technology for new graphic engine. It can provide up to 256MB of frame buffer when you install over 1GB of system memory. The ICH8DO integrates with up to 6 USB2.0 interfaces, and serial ATA II interface with RAID function.

Flexible Extension Interface

The board provides one mini-PCI socket.

1.2 <Product Specification>

General Specification

Form Factor	Full-size PICMG CPU card
CPU	Intel® Core 2 Duo / Pentium 4 / Pentium D / Celeron D processor with LGA775 socket Package type: PLGA 775 Front side bus: 533/800/1066MT/s (133/200/266MHz x 4) Intel® Hyper-Threading Technology and Dual core supported
Memory	2 x 240-pin DDR2 533/667/800MHz SDRAM up to 3GB Unbuffered, none-ECC memory supported only
Chipset	Intel® Q965 (Northbridge) and ICH8DO (Southbridge)
BIOS	Phoenix-Award v6.00PG 8Mb SPI flash BIOS
Green Function	Power saving mode includes doze, standby and suspend modes. ACPI version 1.0 and APM version 1.2 compliant
Watchdog Timer	System reset programmable watchdog timer with 1 ~ 255 sec./min. of timeout value
Real Time Clock	Intel® ICH8DO built-in RTC with lithium battery
Serial ATAII	Intel® ICH8DO integrates 6 Serial ATA II interface RAID 0, 1,5,10 Intel Matrix Storage Technology supported

Multi-I/O Port

Chipset	Intel® 82801HDO(ICH8DO) with Winbond® W83627DHG controller
Serial Port	One RS-232 and one RS232/422/485 serial ports
USB Port	Six Hi-Speed USB 2.0 ports with 480Mbps of transfer rate
Parallel Port	One internal bi-direction parallel port with SPP/ECP/EPP mode
Floppy Port	One internal Floppy port
IrDA Port	One IrDA compliant Infrared interface supports SIR
K/B & Mouse	External PS/2 keyboard and mouse port on bracket
GPIO	One 12-pin Digital I/O connector with 8-bit programmable I/O interface
Smart Fan	One CPU fan connector for fan speed controllable

VGA Display Interface

Chipset	Intel® Q965 GMA3000 (Graphic Memory Controller Hub)
Frame Buffer	Up to 256MB shared with system memory
Display Type	CRT, LCD monitor with analog display Onboard 18/24-bit dual channel LVDS interface (3307568C & D Only) Onboard DVI interface (3307568A & B Only)
Connector	External DB15 female connector on bracket Onboard 40-pin LVDS connector (3307568C & D Only) Onboard 26-pin DVI connector (3307568A & B Only)

Ethernet Interface

Controller	One or two Intel 82573L Gigabit Ethernet controller
Type	Triple speed 10/100/1000Base-T Auto-switching Fast Ethernet Full duplex, IEEE802.3U compliant
Connector	Two External RJ45 connectors with LED on bracket

Audio Interface

Chipset	Intel® ICH8DO with Realtek ALC260 HD Audio Intel High Definition Audio compliance
Interface	2 channels sound output
Connector	Internal 10-pin header for line-in/-out, MIC-in, 4-pin header for CD-IN

Expansive Interface

Mini PCI	One Mini-PCI socket TYPE III A (32-bit, 33MHz) Power supply: +3.3V, +5V, 3VSB
----------	---

Power and Environment

Power Requirement	+5V, +12 DC input & 5V _{SB} Requirement
Dimension	338 (L) x 122 (H) mm
Temperature	Operating within 0 ~ 60°C (32 ~ 140°F) Storage within -20 ~ 85°C (-4 ~ 185°F)

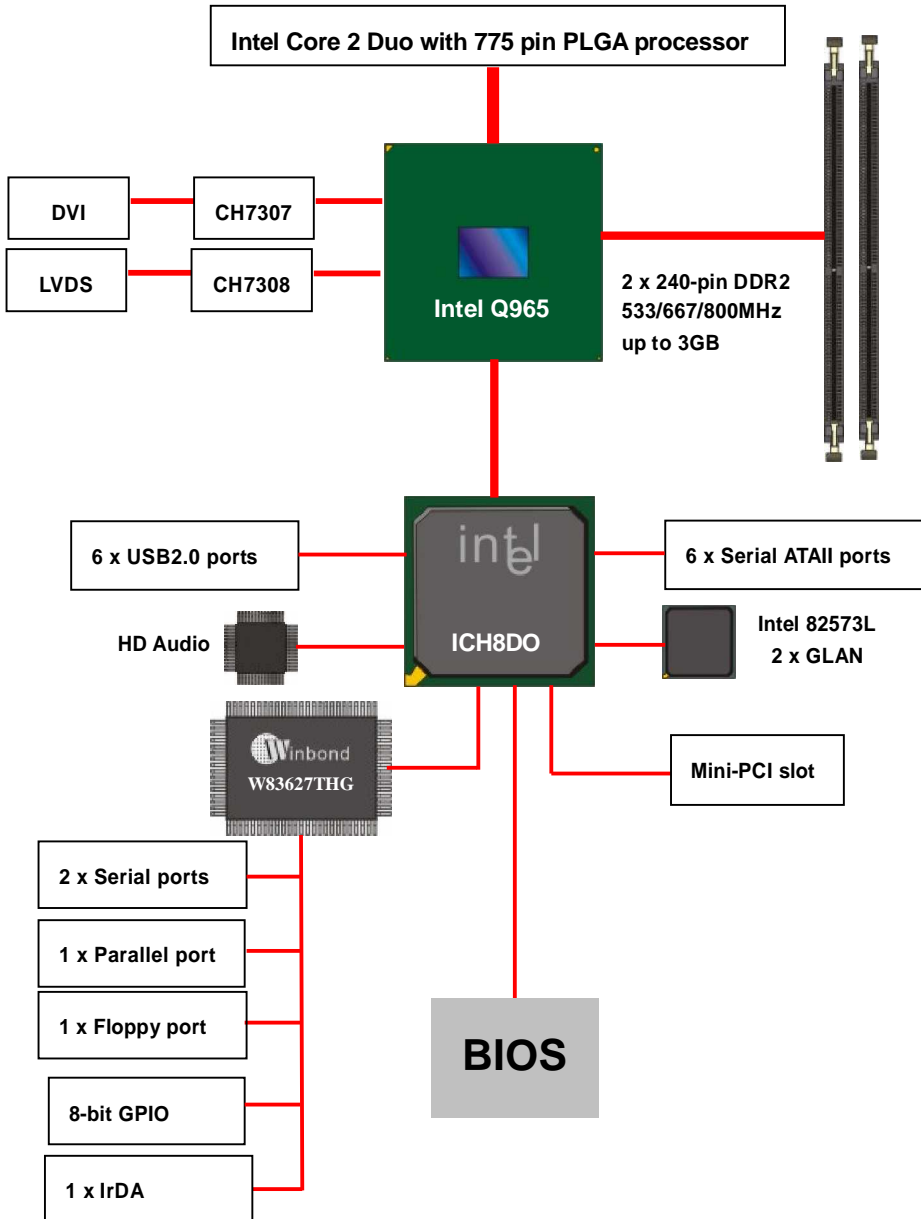
Ordering Code

3307568A	Onboard VGA, Gigabit LAN, Mini-PCI, 6 x SATA, HD Audio, 1 X IrDA, DVI, 3 x USB, Serial port, LPT, GPIO, FDD
3307568C	Onboard VGA, Gigabit LAN, Mini-PCI, 6 x SATA, HD Audio, 1 X IrDA, LVDS, 3 x USB, Serial port, LPT, GPIO, FDD
3307568B	Onboard VGA, 2 x Gigabit LAN, Mini-PCI, 6 x SATA, HD Audio, 1 X IrDA, DVI, 3 x USB, 2 x Serial port, LPT, GPIO, FDD
3307568D	Onboard VGA, 2 x Gigabit LAN, Mini-PCI, 6 x SATA, HD Audio, 1 X IrDA, LVDS, 3 x USB, 2 x Serial port, LPT, GPIO, FDD

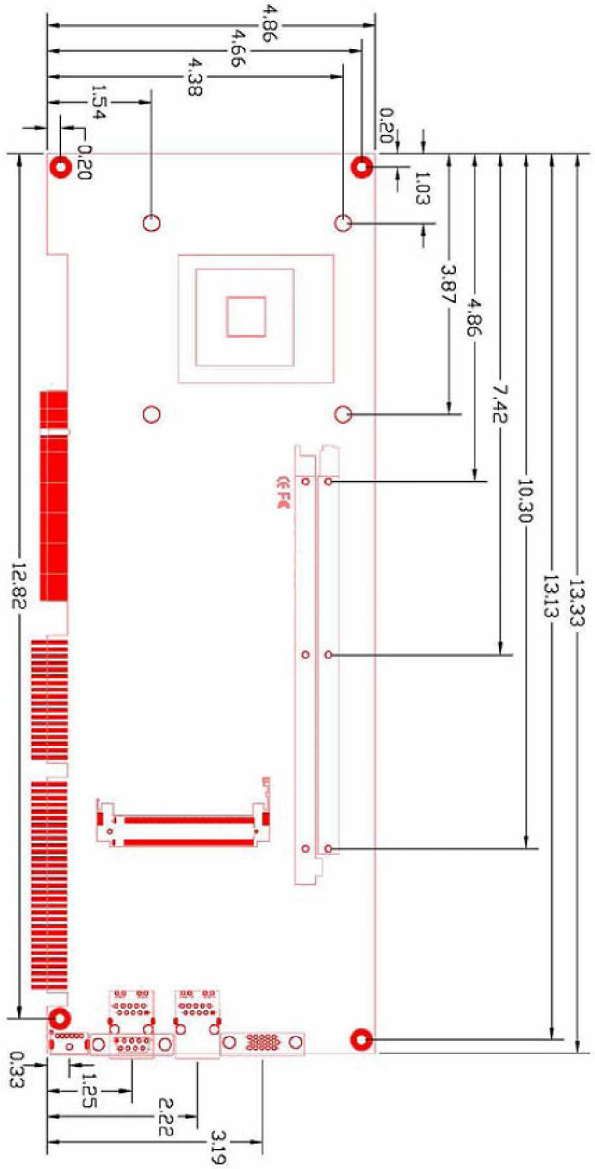
The specifications may be different as the actual production.

For further product information please visit the website at www.globalamericaninc.com

1.3 <Block Diagram>

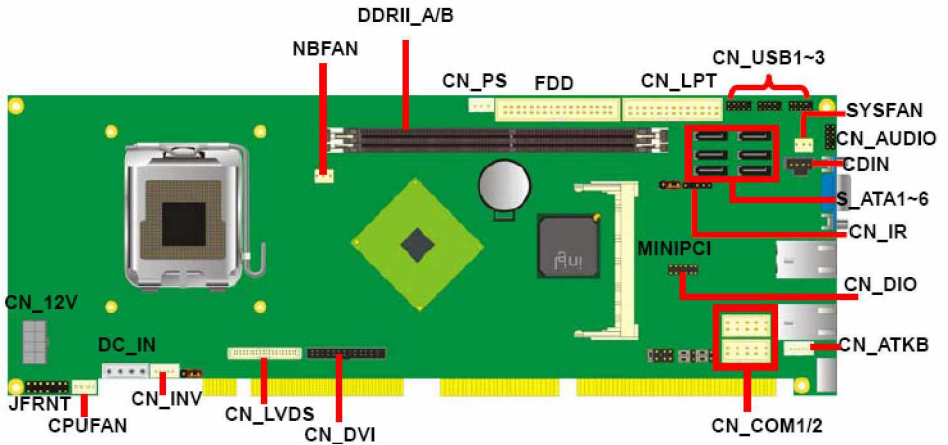


1.4 <Mechanical Drawing >



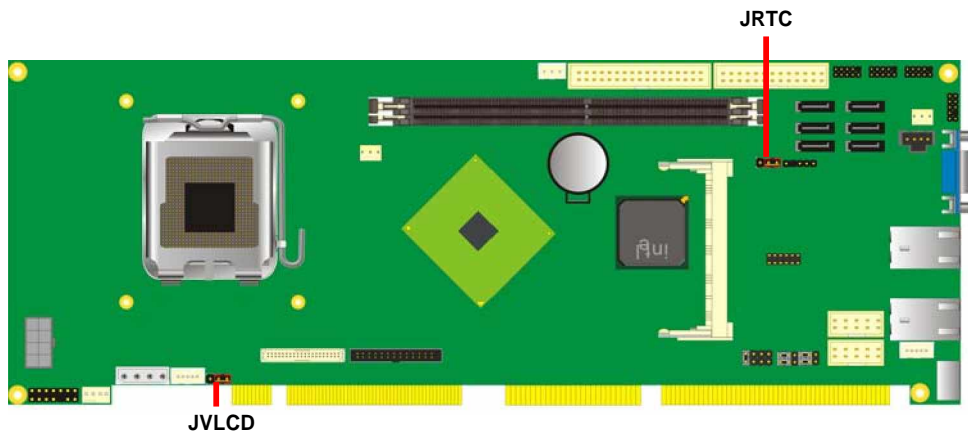
Chapter 2 <Hardware Setup>

2.1 <Connector Location>



2.2 <Jumper Reference>

Jumper	Function
JRTC	CMOS Operating/Clear Setting
JVLCD	Panel Voltage Setting (3307568C & D Only)



2.3 <Connector Reference>

2.3.1 <Internal Connectors>

Connector	Function	Remark
CPU	LGA775 CPU socket	
DDRIIA/B	240 -pin DDR2 SDRAM DIMM socket	
FDD	34-pin floppy connector	
CN_LPT	13 x 2-pin LPT connector	
S_ATAII1/2/3/4/5/6	7-pin Serial ATA II connector	
CN_12V	8-pin +12V additional power supply connector	
CN_AUDIO	5 x 2-pin audio connector	
CDIN	4-pin CD-ROM audio input connector	
CN_PS	3-pin ATX function connector	
DC_IN	4-pin power supply connector	
CN_DIO	6 x 2-pin digital I/O connector	
CN_USB1/2/3	10-pin USB connector	
CPUFAN	4-pin CPU cooler fan connector	
SYSFAN	3-pin system cooler fan connector	
NBFAN	3-pin Northbridge cooler fan connector	
CN_IR	5-pin IrDA connector	
CN_ATKB	5-pin AT keyboard connector	
CN_INV	5-pin LCD inverter connector	3307568XG
CN_LVDS	20 x 2-pin LVDS connector	3307568XG
JFRNT	14-pin front panel switch/indicator connector	
Mini-PCI	1 x 124-pin Mini-PCI socket	
CN_DVI	26-Pin connector	3307568DG
CN_COM1/2	5 x 2-pin com connector	

2.3.2 <External Connectors>

Connector	Function	Remark
CRT	DB15 VGA connector	
RJ45_1/2	One RJ45 LAN connector	
PS2	PS/2 keyboard and mouse connector	

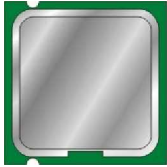
2.4 <CPU and Memory Setup>

2.4.1 <CPU installation>

3307568 has a LGA775 CPU socket onboard; please check following steps to install the processor properly.

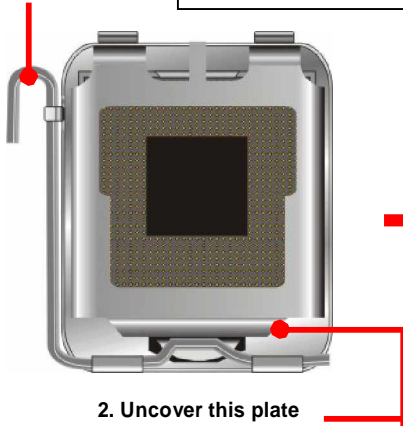
Attention If 3307568 need RMA please Keep CPU socket cover on the CPU Socket.

Warning If CPU Socket internal Pin damage We could not provide warranty.



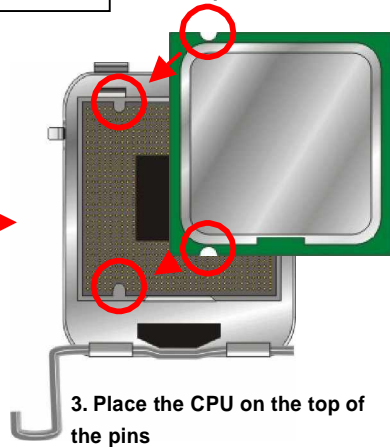
Intel Core 2 Duo processor
 Package type: 775 pin PLGA
 L2 Cache: 4 MB
 FSB: 533/800/1066MHz (266MHz x 4)
 Manufacturing: 65nm, 90nm
 Intel Hyper Threading Technology
 and Core 2 Duo supported

1. Lift this bar



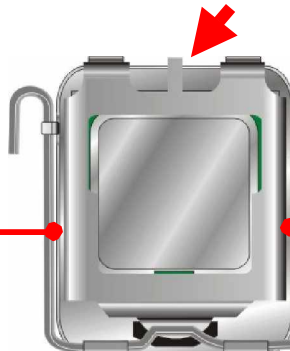
2. Uncover this plate

Check point



3. Place the CPU on the top of the pins

4. Lock this bar

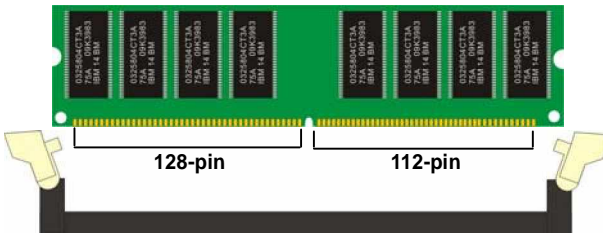
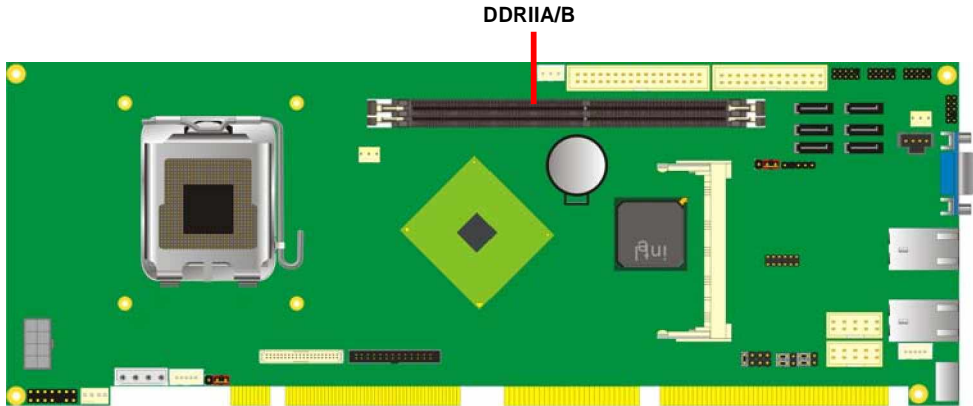


3. Cover this plate

Notice: Please place the CPU on the pins tenderly to avoid bending the pins

2.4.2 <Memory installation>

3307568 has two 240-pin DDR2 DIMM support up to 3GB of memory capacity. The memory frequency supports 533/667/800MHz . Only Non-ECC memory is supported.



Please check the pin number to match the socket side well before installing memory module.

2.5 <CMOS Setup>

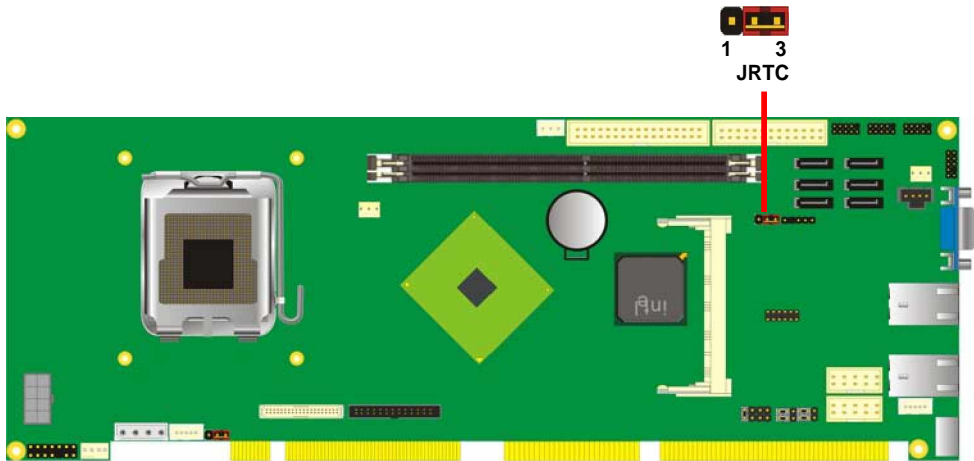
The board's data of CMOS can be setting in BIOS. If the board refuses to boot due to inappropriate CMOS settings, here is how to proceed to clear (reset) the CMOS to its default values.

Jumper: JRTC

Type: Onboard 3-pin jumper

JRTC	Mode
1-2	Clear CMOS
2-3	Normal Operation

Default setting



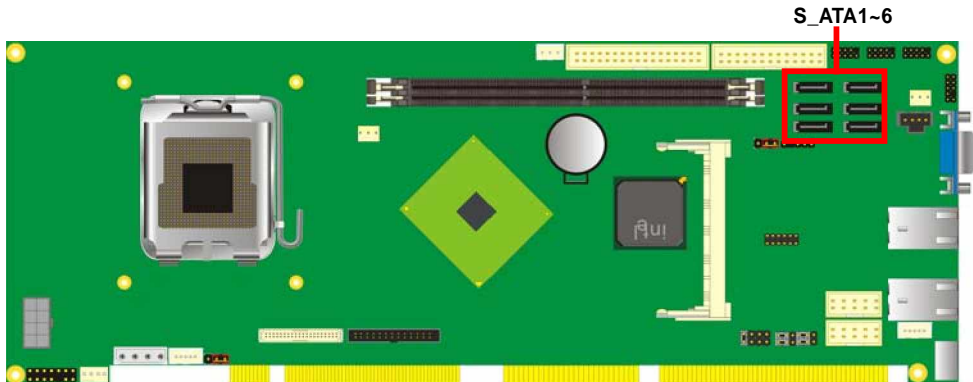
2.6 <Serial ATA installation>

3307568 has six Serial ATA II interfaces with RAID function, the transfer rate of the Serial ATA II can be up to 300MB/s. Please go to <http://www.serialata.org/> for more about Serial ATA technology information. Based on Intel ICH8DO, it supports **Intel Matrix Storage Technology** with combination of RAID 0,1,5 and 10. The main features of RAID on ICH8DO are listed below:

1. Supports for up to RAID volumes on a single, two-hard drive RAID array.
2. Supports for two, two-hard drive RAID arrays on any of six Serial ATA ports.
3. Supports for Serial ATA ATAPI devices.
4. Supports for RAID spares and automatic rebuild.
5. Supports on RAID arrays, including NCQ and native hot plug.

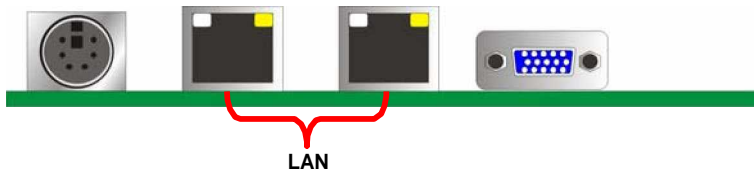
For more information please visit Intel's official website.

For more about the system setup for Serial ATA, please check the chapter of SATA configuration.



2.7 <LAN Interface>

The Intel 82573L supports triple speed of 10/100/1000Base-T, with IEEE802.3 compliance and Wake-On-LAN supported.



2.8 <Onboard Display Interface>

Based on Intel Q965 chipset with built-in graphics, the board provides one DB15 connector on real external I/O port, and one 40-pin LVDS interface with 5-pin LCD backlight inverter connector. (3307568C & D Only)

The board also provides 26-pin DVI interface. (3307568A & B Only)

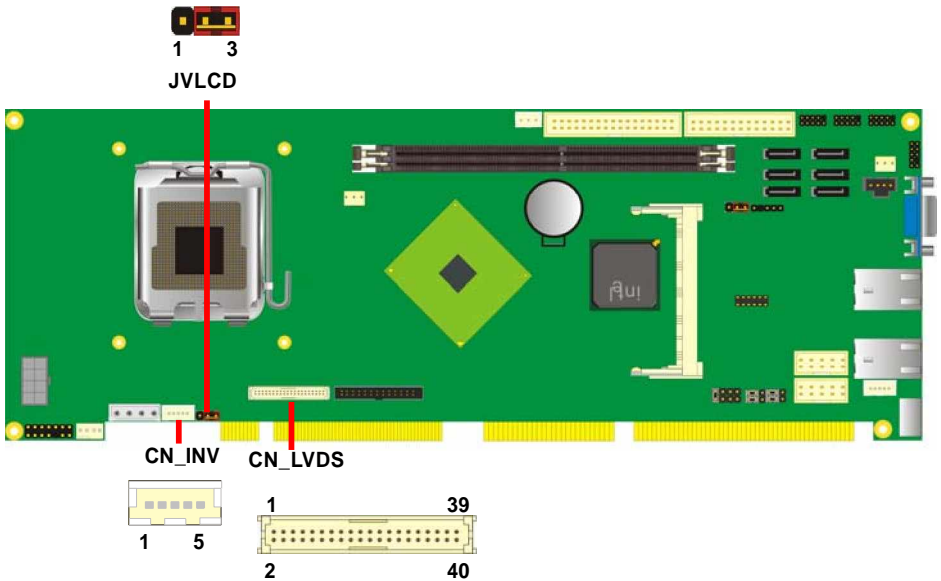
2.8.1 <Analog Display>

Please connect your CRT or LCD monitor with DB15 male connector to the onboard DB15 female connector on bracket.



2.8.2 <LVDS Display 3307568C & D Only >

The board provides one 40-pin LVDS connector for 18/24-bit dual channel panels, supports up to 1600 x 1200 (UXGA) of resolution, with one LCD backlight inverter connector and one jumper for panel voltage setting.



Connector: **CN_INV**

Type: 5-pin LVDS Power Header

Connector model: **JST B5B-XH-A**Connector: **JVLCD**

Type: 3-pin Power select Header

Pin	Description
1	+12V
2	GND
3	GND
4	GND
5	ENABKL

Pin	Description
1	VCC (5V)
2	LCDVCC
3	VCC3 (3.3)

Connector: **CN_LVDS**

Type: onboard 40-pin connector for LVDS connector

Connector model: **HIROSE DF13-40DP-1.25V**

Pin	Signal	Pin	Signal
2	LCDVCC	1	LCDVCC
4	GND	3	GND
6	ATX0-	5	BTX0-
8	ATX0+	7	BTX0+
10	GND	9	GND
12	ATX1-	11	BTX1-
14	ATX1+	13	BTX1+
16	GND	15	GND
18	ATX2-	17	BTX2-
20	ATX2+	19	BTX2+
22	GND	21	GND
24	ACLK-	23	BTX3-
26	ACLK+	25	BTX3+
28	GND	27	GND
30	ATX3-	29	BCLK-
32	ATX3+	31	BCLK+
34	GND	33	GND
36	N/C	35	N/C
38	N/C	37	N/C
40	N/C	39	N/C

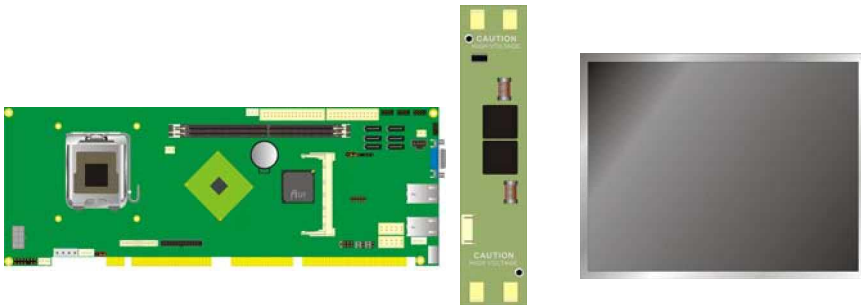
To setup the LCD, you need the component below:

1. A panel with LVDS interfaces.
2. An inverter for panel's backlight power.
3. A LCD cable and an inverter cable.

For the cables, please follow the pin assignment of the connector to make a cable, because every panel has its own pin assignment, so we do not provide a standard cable; please find a local cable manufacture to make cables.

LCD Installation Guide:

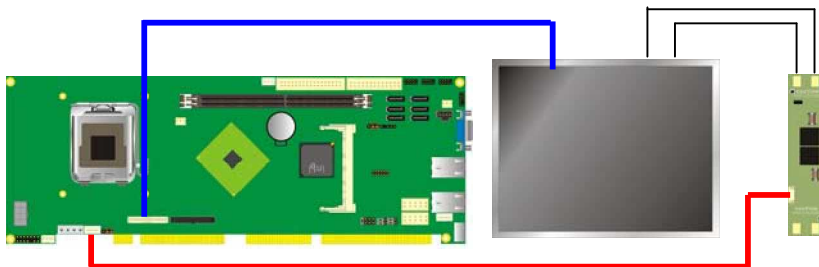
1. Preparing the **3307568**, **LCD panel** and the **backlight inverter**.



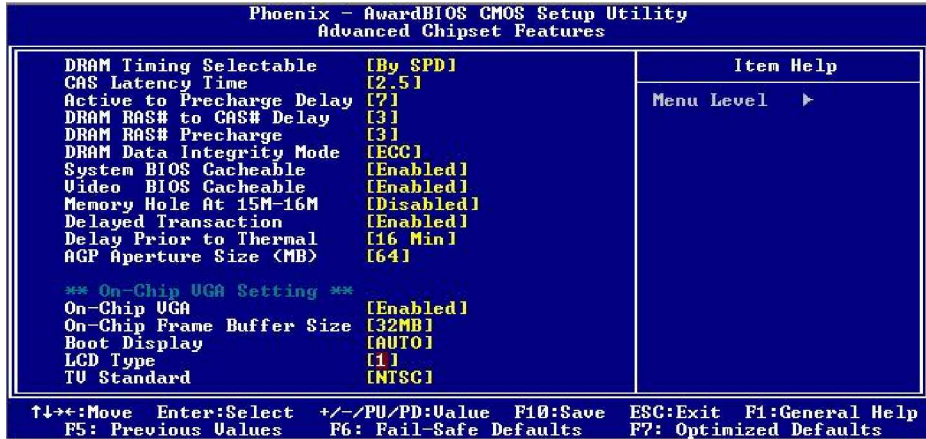
2. Please check the datasheet of the panel to see the voltage of the panel, and set the jumper **JVLCD** to +5V or +3.3V.
3. You would need a LVDS type cable.



4. To connect all of the devices well.



After setup the devices well, you need to select the LCD panel type in the BIOS.



The LCD type mapping is list below:

BIOS panel type selection form			
Single channel		Dual channel	
NO.	Output format	NO.	Output format
1	800 x 600 (18bit)	3	1280 x 1024 (24bit)
2	1024 x 768 (24bit)	4	1366 x 768 (24bit)

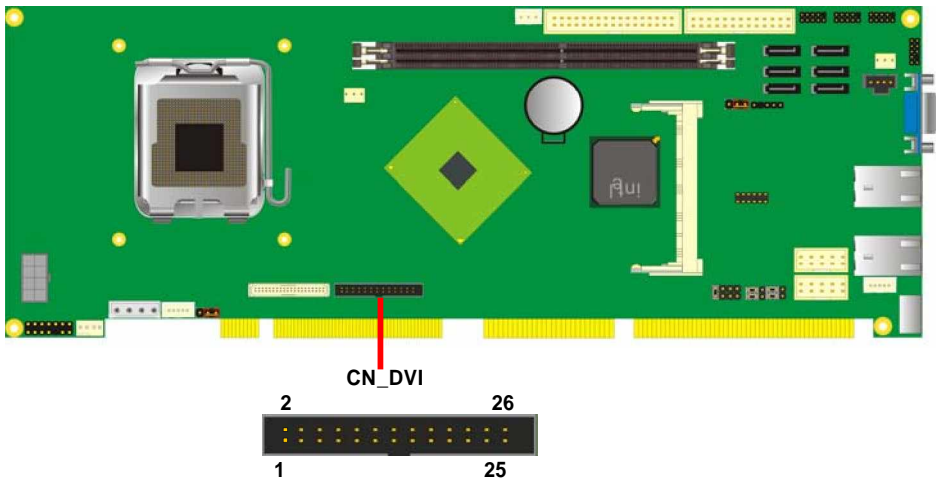
2.8.3 <DVI Display 3307568DG/ DG2 Only >

The board provides optional DVI-D interface with Intel Q965, compliant with DVI 1.0 standard.

Connector: **CN_DVI**

Connector type: 26-pin header connector (pitch = 2.0mm)

Pin Number	Assignment	Pin Number	Assignment
1	TX1+	2	TX1-
3	Ground	4	Ground
5	TXC+	6	TXC-
7	Ground	8	PVDD
9	N/C	10	N/C
11	TX2+	12	TX2-
13	Ground	14	Ground
15	TX0+	16	TX0-
17	N/C	18	HPDET
19	DDCDATA	20	DDCCLK
21	GND	22	N/C
23	N/C	24	N/C
25	N/C	26	N/C



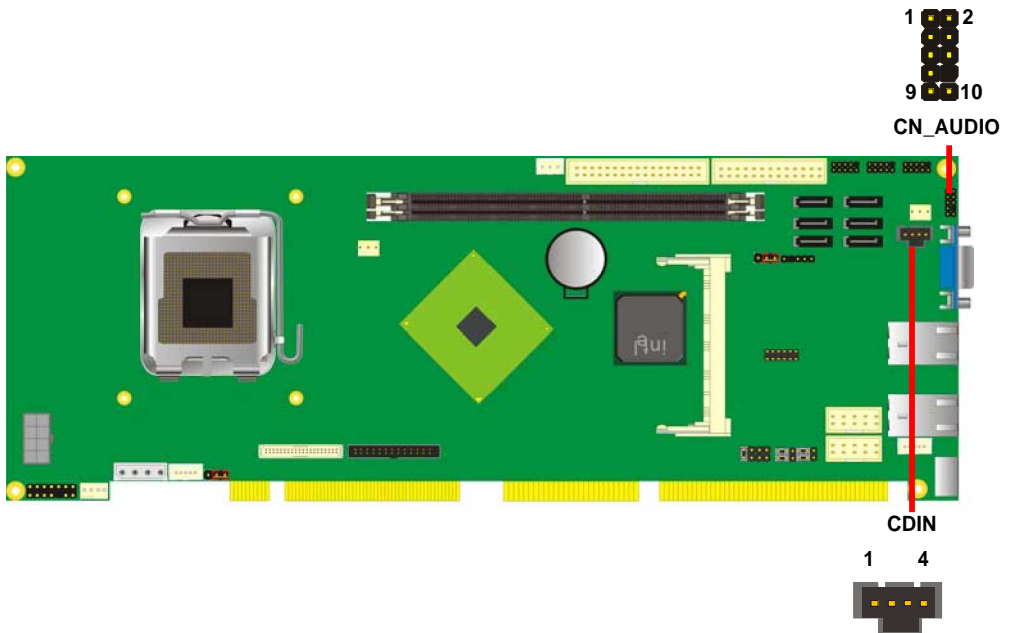
2.9 <Audio Installation>

The board integrates onboard audio interface with REALTEK ALC260 codec, with Intel next generation of audio standard as High Definition Audio, it offers more vivid sound and other advantages than former HD audio compliance.

The main specifications of ALC260 are:

- z **High-performance DACs with 100dB S/N ratio**
- z **Compatible with HD**
- z **Meets Microsoft WHQL/WLP 2.0 audio requirements**

The board provides amplified speaker out and Line-in/MIC-in ports for front I/O panel through audio cable.



Connector: CN_AUDIO

Type: 10-pin (2 x 5) header (pitch = 2.54mm)

Pin	Description	Pin	Description
1	MIC_L	2	Ground
3	MIC_R	4	ACZ_DET
5	Speaker_R	6	MIC Detect
7	SENSE	8	N/C
9	Speaker_L	10	Speaker Detect

Connector: CDIN

Type: 4-pin header (pitch = 2.54mm)

Pin	Description
1	CD – Left
2	Ground
3	Ground
4	CD – Right

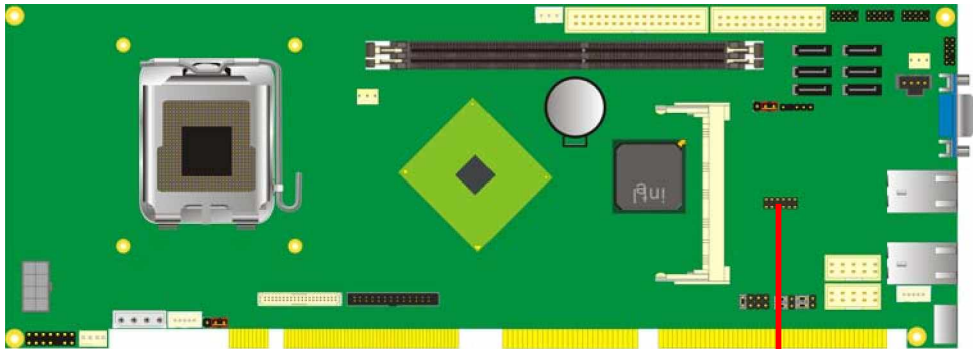
2.11 <GPIO interface>

The board provides a programmable 8-bit digital I/O interface for control panel application.

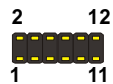
Connector: **CN_DIO**

Type: onboard 2 x 6-pin header, pitch=2.0mm

Pin	Description	Pin	Description
1	Ground	2	Ground
3	GP10	4	GP14
5	GP11	6	GP15
7	GP12	8	GP16
9	GP13	10	GP17
11	VCC	12	+12V



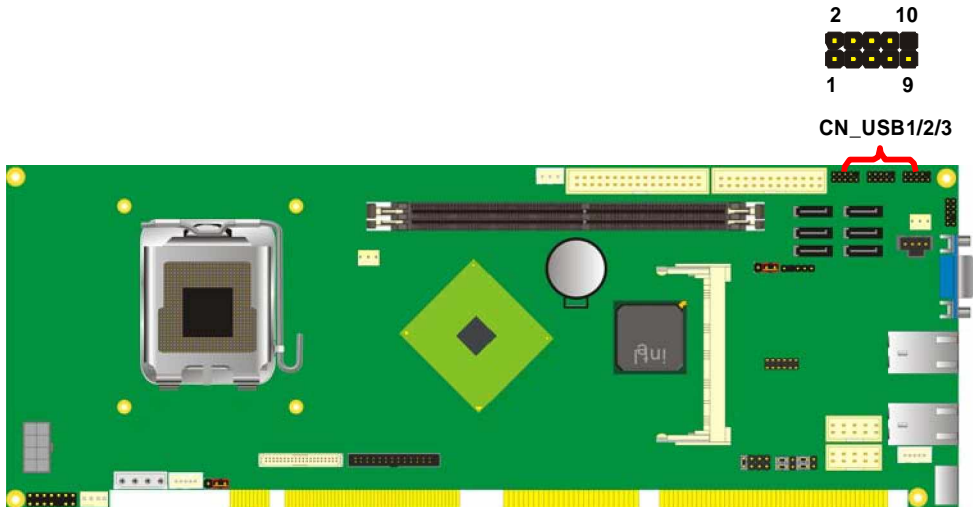
CN_DIO



2.12 <USB2.0 Interface>

Based on Intel ICH8HDO , the board provides 6 USB2.0 ports. The USB2.0 interface provides up to 480Mbps of transferring rate.

The Intel ICH8DO contains two Enhanced Host Controller Interface (EHCI) and five Universal Host Controller Interfaces (UHCI), it can determine whether your connected device is for USB1.1 or USB2.0, and change the transfer rate automatically.



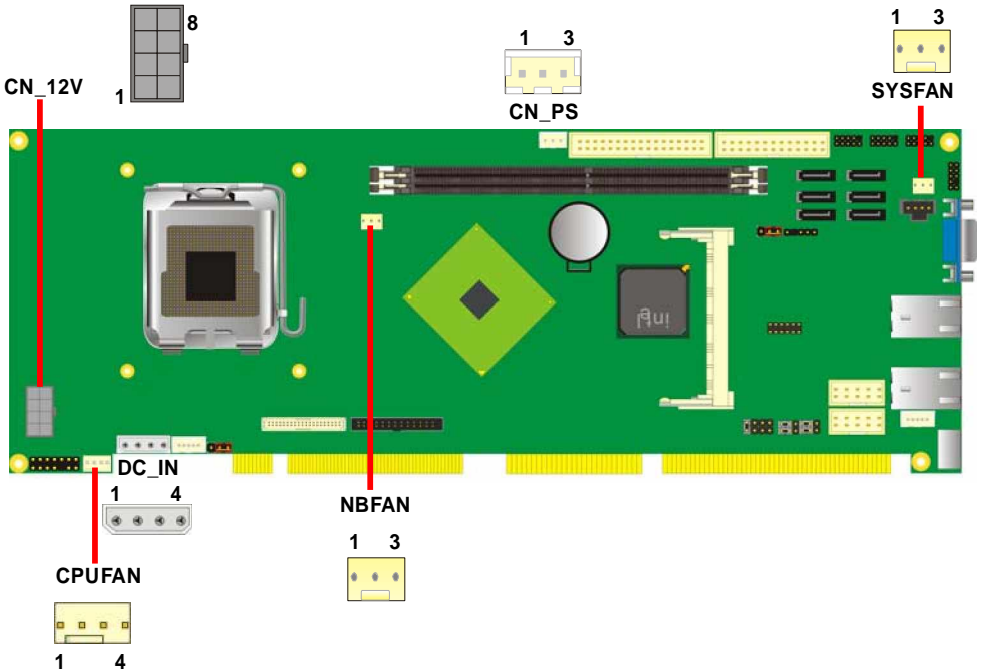
Connector: **CN_USB1/2/3**

Type: 10-pin (5 x 2) header for USB5/6 Ports

Pin	Description	Pin	Description
1	VCC	2	VCC
3	Data0-	4	Data1-
5	Data0+	6	Data1+
7	Ground	8	Ground
9	Ground	10	N/C

2.13 <Power and Fan Installation>

The 3307568 provides a standard ATX power supply with **4-pin** ATX connector and **8-pin** additional 12V connector, and the board provides one **4-pin** fan connector supporting smart fan for CPU cooler and two 3-pin cooler fan connectors for system and Northbridge chip. The 8-pin CN_12V additional power connector is necessary for CPU powering; please connect this well before you finishing the system setup.



Connector: **CN_12V**

Type: 8-pin ATX power connector

PIN assignment			
1	GND	5	+12V
2	GND	6	+12V
3	GND	7	+12V
4	GND	8	+12V

Connector: **DC_IN**

Type: 4-pin P-type connector for +5V/+12V input

Pin	Description	Pin	Description	Pin	Description	Pin	Description
1	+12V	2	Ground	3	Ground	4	+5V

Connector: **CN_PS**

Type: 3-pin ATX function connector

Pin	Description	Pin	Description	Pin	Description
1	5V Standby	2	Ground	3	Power On

Connector: **CPUFAN**

Type: 4-pin fan wafer connector

Pin	Description	Pin	Description
1	Ground	2	+12V
3	Fan Speed Detection	4	Fan Control

Connector: **NBFAN, SYSFAN**

Type: 3-pin fan wafer connector

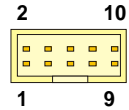
Pin	Description	Pin	Description	Pin	Description
1	Ground	2	+12V	3	Sense

2.14 <Serial Port>

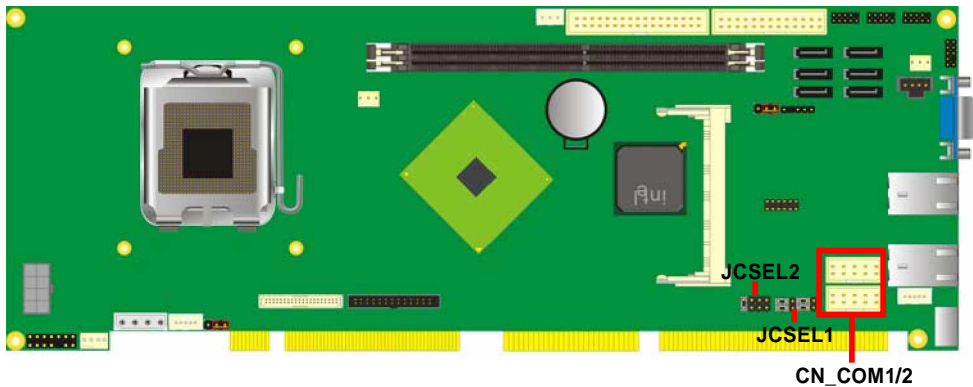
The board supports one RS232 serial port and one jumper selectable RS232/422/485 serial ports. The jumper JCSEL1 & JCSEL2 can let you configure the communicating modes for COM2.


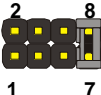






Connector: **CN_COM1/2**

Type: 10-pin (5 x 2) 2.54mm x 2.54mm-pitch header for COM2



Pin	Description	Pin	Description
1	DCD/422RX-/485-	2	RXD/422RX+/485+
3	TXD/422TX+	4	DTR/422TX-
5	GND	6	DSR
7	RTS	8	CTS
9	RI	10	N/C



	JCSEL1	JCSEL2
SIR		
RS-422		
RS-485		
RS-232		

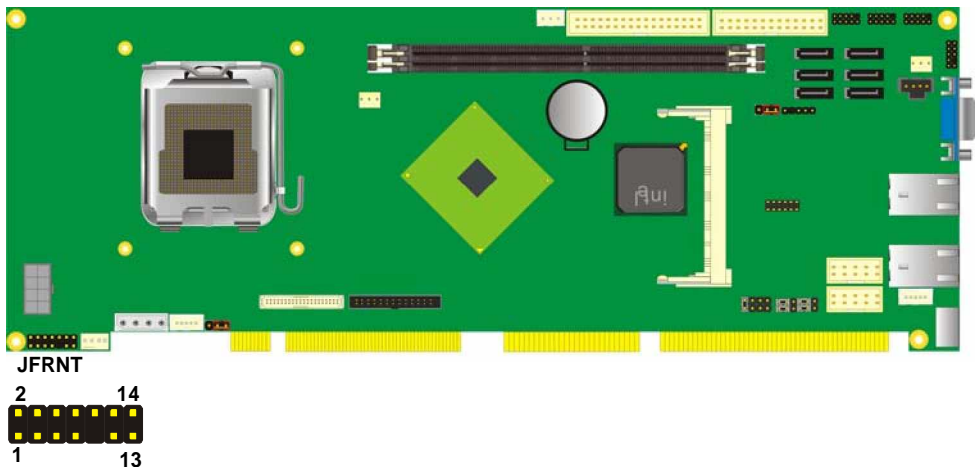
2.15 <Switch and Indicator>

The **JFRNT** provides front control panel of the board, such as power button, reset and beeper, etc. Please check well before you connecting the cables on the chassis.

Connector: **JFRNT**

Type: onboard 14-pin (2 x 7) 2.54-pitch header

Function	Signal	PIN		Signal	Function
IDE LED	HDLED+	1	2	PWDLED+	Power LED
	HDLED-	3	4	N/C	
Reset	Reset+	5	6	PWDLED-	Speaker
	Reset-	7	8	SPKIN+	
N/C		9	10	N/C	
Power Button	PWRBT+	11	12	N/C	
	PWRBT-	13	14	SPKIN-	

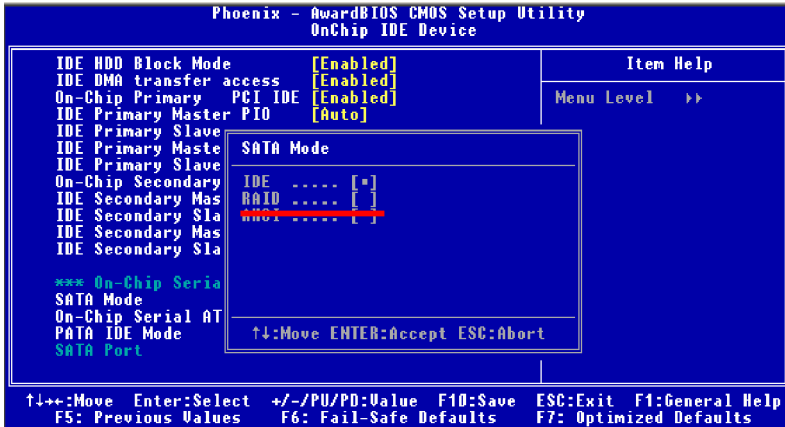


(This Page is Left for Blank)

Chapter 3 <System Configuration>

3.1 <SATA configuration>

SATA Mode:



This option can let you select whether the Serial ATA hard drives would work under normal IDE mode or RAID mode. The RAID mode need more than one HDD is applied.

3.2 <SATA RAID Configuration>

The board integrates Intel ICH8DO with RAID function for Serial ATA II drives, and supports the configurations below:

RAID 0 (Striping): Two hard drives operating as one drive for optimized data R/W performance. It needs two unused drives to build this operation.

RAID 1 (Mirroring): Copies the data from first drive to second drive for data security, and if one drive fails, the system would access the applications to the workable drive. It needs two unused drives or one system used and one unused drive to build this operation. The second drive must be the same or larger size than first one.

RAID 5 (striping with parity)

A RAID 5 array contains three or more hard drives where the data is divided into manageable blocks called strips. Parity is a mathematical method for recreating data that was lost from a single drive, which increases fault-tolerance. The data and parity are striped across all the hard drives in the array. The parity is striped in a rotating sequence to reduce bottlenecks associated with the parity calculations.

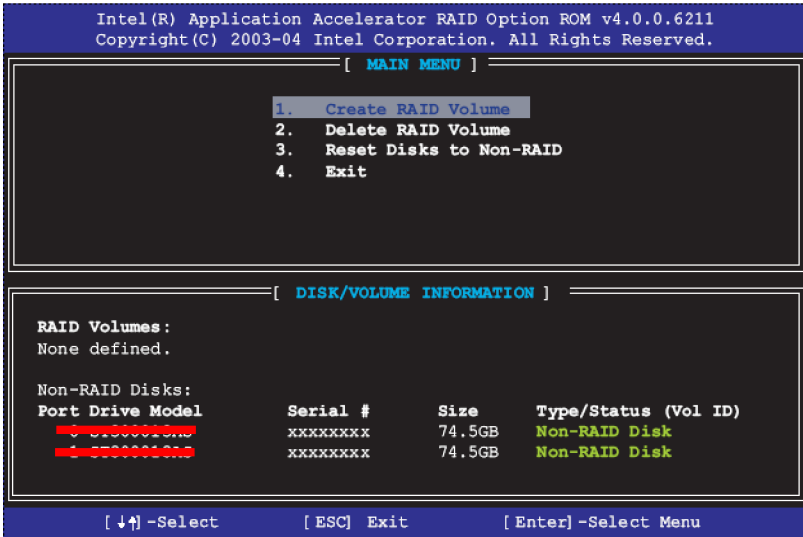
RAID 10 (RAID 0+1)

A RAID 10 array uses four hard drives to create a combination of RAID levels 0 and 1. The data is striped across a two-drive array forming the RAID 0 component. Each of the drives in the RAID 0 array is then mirrored by a RAID 1 component.

Intel Matrix Storage Technology: This technology would allow you to use **RAID 0+1** mode on only two drives (4 drives needed on traditional RAID 0+1). It will create two partitions on each hard drive to simulate **RAID 0** and **RAID 1**. It also can let you modify the partition size without re-formatted.

For more information of Intel Matrix Storage Technology, please visit Intel's website.

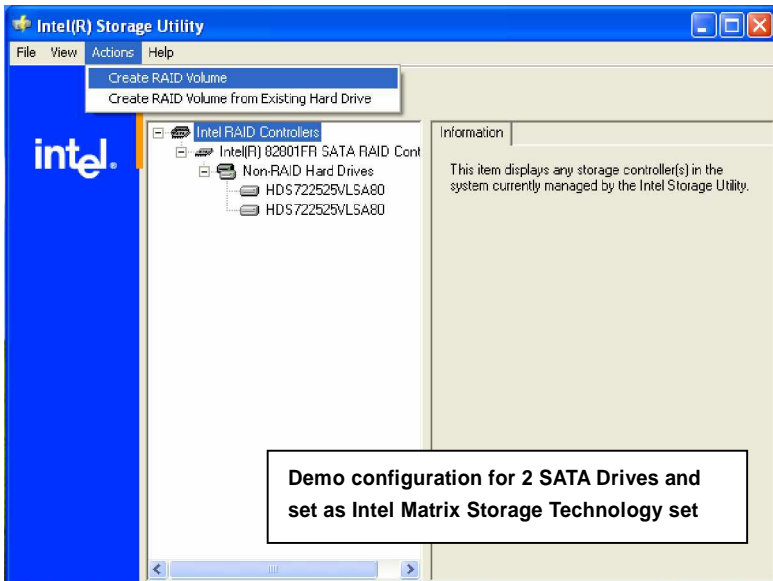
If you need to install an operation system on the RAID set, please use the driver disk attached in the package when it informs you to obtain the RAID drivers.



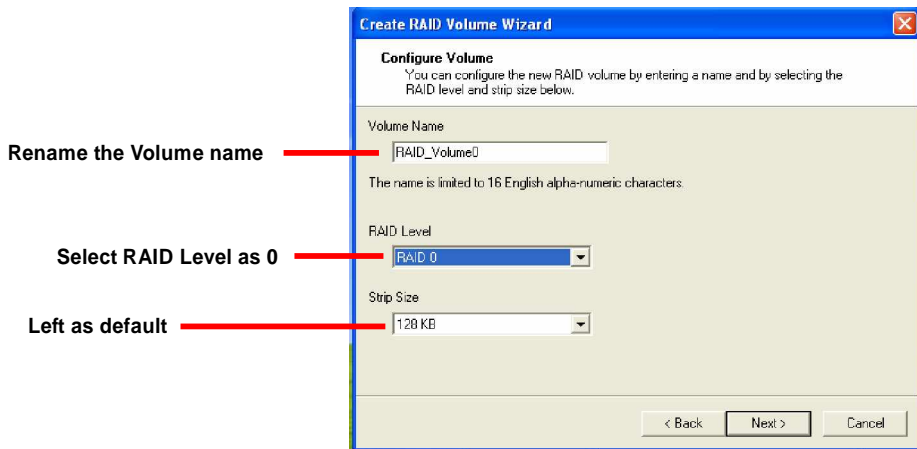
Please press <CTRL+I> to enter the RAID configuration menu.

You can setup the RAID under operation system for Microsoft Windows XP SP1 or Windows 2000 SP4 version, please install the Intel Application Accelerator Ver.4.5 later to support RAID configuration with Intel Matrix Storage Technology.

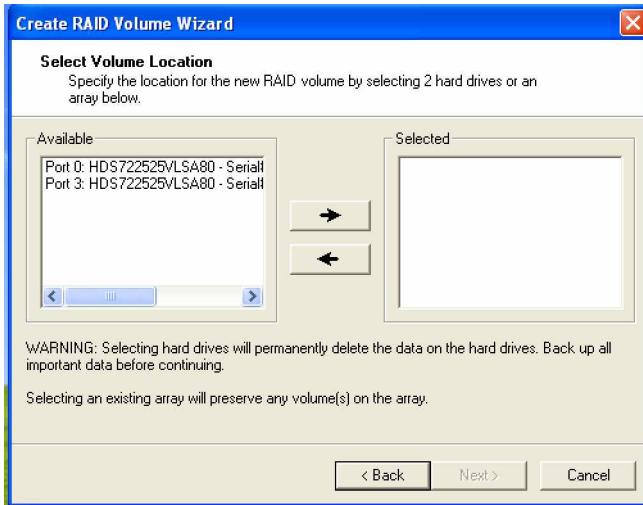
1. After installing Intel Application Accelerator, please execute Intel Storage Utility.



2. Select Actions to Create RAID Volume

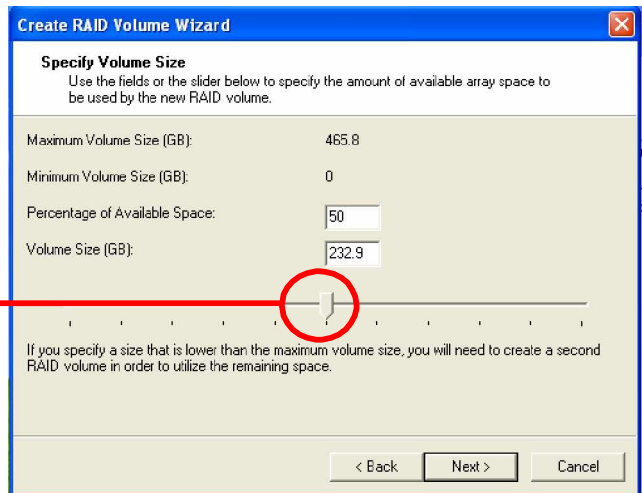


3. Please select two hard drives to prepare to set the RAID volume

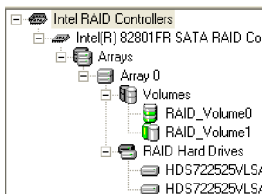


4. Specify the Volume size

Tune this bar to specify the volume size, if you specify the volume size lower than maximum, you can create a second volume for another RAID set. (Make RAID 0+1 on only two hard drives)



5. Repeat the step 1 to create second volume as RAID Level 1.



For other configuration set please click Help on tool bar.

3.3 <Audio Configuration>

The board integrates Intel ICH8DO with REALTEK ALC260 codec. It can support 2-channel sound under system configuration. Please follow the steps below to setup your sound system.

1. Install REALTEK HD Audio driver.



2. Launch the control panel and Sound Effect Manager.
3. Select Speaker Configuration



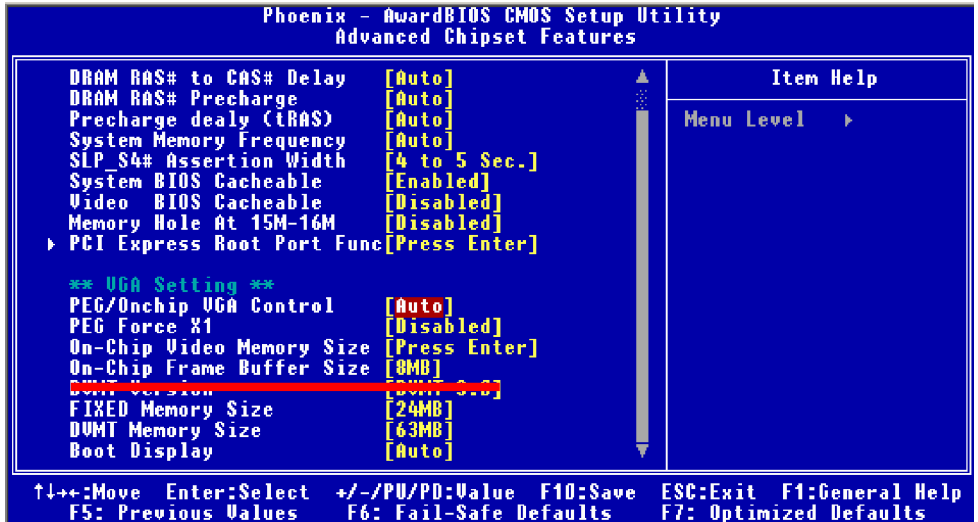
4. Select the sound mode to meet your speaker system.

3.4 <Video Memory Setup>

Based on Intel Q965 chipset with GMA (Graphic Media Accelerator) 3000, the board supports Intel DVMT (Dynamic Video Memory Technology) 3.0, which would allow the video memory be triggered up to 256MB.

To support DVMT, you need to install the Intel GMA 3000 Driver with supported OS.

BIOS Setup:



On-Chip Video Memory Size: This option combines three items below for setup.

On-Chip Frame Buffer Size:

This item can let you select video memory which been allocated for legacy VGA and SVGA graphics support and compatibility. The available option is **1MB** and **8MB**.

Fixed Memory Size:

This item can let you select a static amount of page-locked graphics memory which will be allocated during driver initialization. Once you select the memory amount, it will be no longer available for system memory.

DVMT Memory Size:

This item can let you select a maximum size of dynamic amount usage of video memory, the system would configure the video memory depends on your application, this item is strongly recommend to be selected as **MAX DVMT**.

Fixed + DVMT Memory Size:

You can select the fixed amount and the DVMT amount at the same time for a guaranteed video memory and additional dynamic video memory, please check the table below for available setting.

System Memory	On-Chip Frame Buffer Size	Fixed Memory Size	DVMT Memory Size	Total Graphic Memory
256MB ~ 511MB	1MB	128MB	0MB	128MB
	1MB	0MB	128MB	128MB
	8MB	128MB	0MB	128MB
	8MB	0	128MB	128MB
512MB~1023MB	1MB	128MB	0	128MB
	1MB	256MB	0	256MB
	1MB	0	128MB	128MB
	1MB	0	256MB	256MB
	8MB	128MB	0	128MB
	8MB	256MB	0	256MB
	8MB	0	128MB	128MB
	8MB	0	256MB	256MB

Notice:

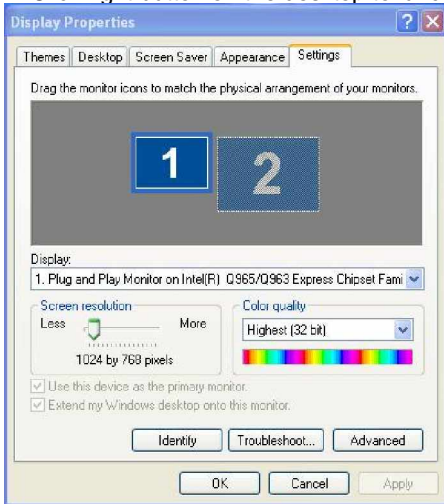
1. The On-Chip Frame Buffer Size would be included in the Fixed Memory.
2. Please select the memory size according to this table.

3.5 <Display Properties Setting>

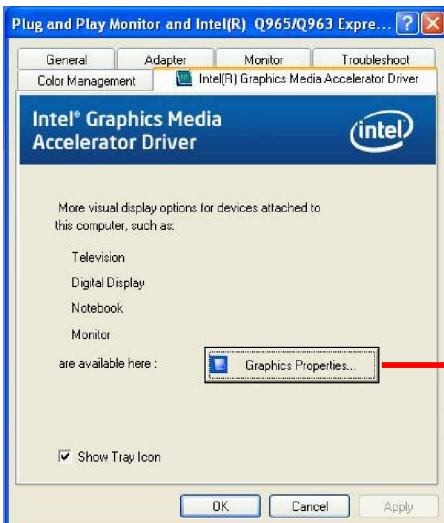
Based on Intel Q965 GMCH with GMA3000 (Graphic Media Accelerator), the board supports two DACs for display device as different resolution and color bit.

Please install the Intel Graphic Driver before you starting setup display devices.

1. Click right button on the desktop to lunch **display properties**



2. Click **Advanced** button for more specificity setup.

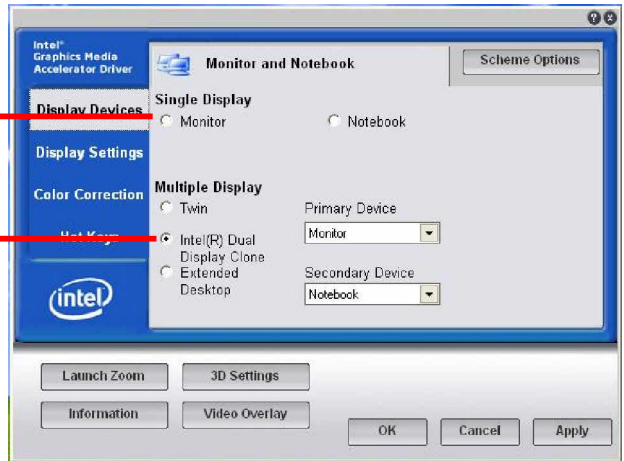


Click **Graphics Properties...** for advanced setup

3. This setup options can let you define each device settings.

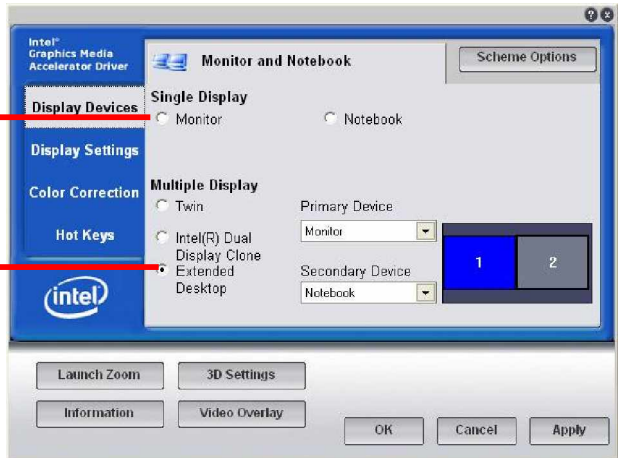
Click **Monitor** to setup the CRT monitor for Colors, Resolution and Refresh Rate

Click **Intel® Dual Display Clone** to setup the dual display mode as same screen



Set the main display device here

Click **Extended Desktop** to setup the dual display mode as different screen display



Chapter 4 <BIOS Setup>

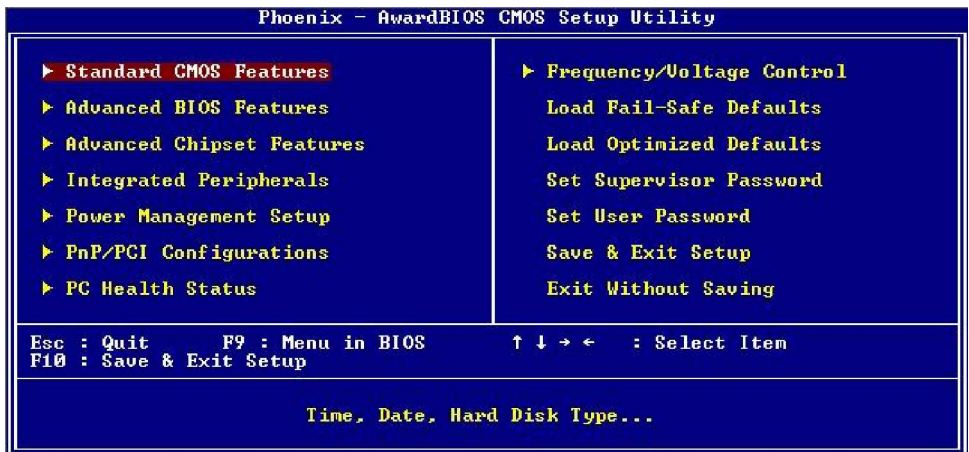
The motherboard uses the Award BIOS for the system configuration. The Award BIOS in the single board computer is a customized version of the industrial standard BIOS for IBM PC AT-compatible computers. It supports Intel x86 and compatible CPU architecture based processors and computers. The BIOS provides critical low-level support for the system central processing, memory and I/O sub-systems.

The BIOS setup program of the single board computer let the customers modify the basic configuration setting. The settings are stored in a dedicated battery-backed memory, NVRAM, retains the information when the power is turned off. If the battery runs out of the power, then the settings of BIOS will come back to the default setting.

The BIOS section of the manual is subject to change without notice and is provided here for reference purpose only. The settings and configurations of the BIOS are current at the time of print, and therefore they may not be exactly the same as that displayed on your screen.

To activate CMOS Setup program, press key immediately after you turn on the system. The following message "Press DEL to enter SETUP" should appear in the lower left hand corner of your screen. When you enter the CMOS Setup Utility, the Main Menu will be displayed as **Figure 4-1**. You can use arrow keys to select your function, press <Enter> key to accept the selection and enter the sub-menu.

Figure 4-1 CMOS Setup Utility Main Screen



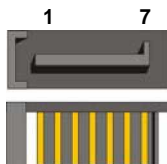
(This Page is Left for Blank)

Appendix A <I/O Port Pin Assignment>

A.1 <Serial ATA Port>

Connector: **S_ATA1/2/3/4/5/6**

Type: 7-pin wafer connector



1	2	3	4	5	6	7
GND	RSATA_TXP1	RSATA_TXN1	GND	RSATA_RXN1	RSATA_RXP1	GND

A.2 <IrDA Port>

Connector: **CN_IR**

Type: 5-pin header for SIR Port

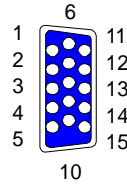


Pin	Description
1	Vcc
2	N/C
3	IRRX
4	Ground
5	IRTX

A.3 <VGA Port>

Connector: CRT

Type: 15-pin D-sub female connector on bracket

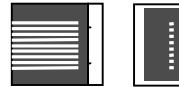


	Description	Pin	Description	Pin	Description
1	RED	6	Ground	11	N/C
2	GREEN	7	Ground	12	DDC_DA
3	BLUE	8	Ground	13	HSYNC
4	N/C	9	+5V	14	VSYNC
5	Ground	10	Ground	15	DDC_CLK

A.4 <LAN Port>

Connector: RJ45/2

Type: RJ45 connector with LED on bracket



Pin	1	2	3	4	5
Description	TRD0+	TRD0-	TRD1+	TRD2+	TRD2-
Pin	6	7	8	9	10
Description	TRD1-	TRD3+	TRD3-	NC	NC

Appendix B <System Resources>

B1.<I/O Port Address Map>

[00000000 - 0000000F]	Direct memory access controller
[00000000 - 00000CF7]	PCI bus
[00000010 - 0000001F]	Motherboard resources
[00000020 - 00000021]	Programmable interrupt controller
[00000022 - 0000003F]	Motherboard resources
[00000040 - 00000043]	System timer
[00000044 - 0000005F]	Motherboard resources
[00000060 - 00000060]	Standard 101/102-Key or Microsoft Natural PS/2 Keyboa
[00000061 - 00000061]	System speaker
[00000062 - 00000063]	Motherboard resources
[00000064 - 00000064]	Standard 101/102-Key or Microsoft Natural PS/2 Keyboa
[00000065 - 0000006F]	Motherboard resources
[00000070 - 00000073]	System CMOS/real time clock
[00000074 - 0000007F]	Motherboard resources
[00000080 - 00000090]	Direct memory access controller
[00000091 - 00000093]	Motherboard resources
[00000094 - 0000009F]	Direct memory access controller
[000000A0 - 000000A1]	Programmable interrupt controller
[000000A2 - 000000BF]	Motherboard resources
[000000C0 - 000000DF]	Direct memory access controller
[000000E0 - 000000EF]	Motherboard resources
[000000F0 - 000000FF]	Numeric data processor
[00000274 - 00000277]	ISAPNP Read Data Port
[00000279 - 00000279]	ISAPNP Read Data Port
[000002F8 - 000002FF]	Communications Port (COM2)
[00000378 - 0000037F]	Printer Port (LPT1)
[000003B0 - 000003BB]	Intel(R) Q965/Q963 Express Chipset Family
[000003C0 - 000003DF]	Intel(R) Q965/Q963 Express Chipset Family
[000003F0 - 000003F5]	Standard floppy disk controller
[000003F7 - 000003F7]	Standard floppy disk controller
[000003F8 - 000003FF]	Communications Port (COM1)
[00000400 - 000004BF]	Motherboard resources
[000004D0 - 000004D1]	Motherboard resources
[00000500 - 0000051F]	Intel(R) ICH8 Family SMBus Controller - 283E
[00000778 - 0000077B]	Printer Port (LPT1)
[00000800 - 0000087F]	Motherboard resources
[00000880 - 0000088F]	Motherboard resources
[00000A79 - 00000A79]	ISAPNP Read Data Port

[00000D00 - 0000FFFF]	PCI bus
[0000A000 - 0000AFFF]	Intel(R) ICH8 Family PCI Express Root Port 1 - 283F
[0000C000 - 0000CFFF]	Intel(R) ICH8 Family PCI Express Root Port 3 - 2843
[0000CF00 - 0000CF1F]	Intel(R) PRO/1000 PL Network Connection
[0000D000 - 0000DFFF]	Intel(R) ICH8 Family PCI Express Root Port 2 - 2841
[0000DF00 - 0000DF1F]	Intel(R) PRO/1000 PL Network Connection #2
[0000ED00 - 0000ED0F]	Intel(R) ICH8 2 port Serial ATA Storage Controller - 2825
[0000EE00 - 0000EE0F]	Intel(R) ICH8 2 port Serial ATA Storage Controller - 2825
[0000EF00 - 0000EF03]	Intel(R) ICH8 2 port Serial ATA Storage Controller - 2825
[0000F000 - 0000F007]	Intel(R) ICH8 2 port Serial ATA Storage Controller - 2825
[0000F100 - 0000F103]	Intel(R) ICH8 2 port Serial ATA Storage Controller - 2825
[0000F200 - 0000F207]	Intel(R) ICH8 2 port Serial ATA Storage Controller - 2825
[0000F400 - 0000F40F]	Intel(R) ICH8 4 port Serial ATA Storage Controller - 2820
[0000F500 - 0000F50F]	Intel(R) ICH8 4 port Serial ATA Storage Controller - 2820
[0000F600 - 0000F603]	Intel(R) ICH8 4 port Serial ATA Storage Controller - 2820
[0000F700 - 0000F707]	Intel(R) ICH8 4 port Serial ATA Storage Controller - 2820
[0000F800 - 0000F803]	Intel(R) ICH8 4 port Serial ATA Storage Controller - 2820
[0000F900 - 0000F907]	Intel(R) ICH8 4 port Serial ATA Storage Controller - 2820
[0000FA00 - 0000FA1F]	Intel(R) ICH8 Family USB Universal Host Controller - 2832
[0000FB00 - 0000FB1F]	Intel(R) ICH8 Family USB Universal Host Controller - 2831
[0000FC00 - 0000FC1F]	Intel(R) ICH8 Family USB Universal Host Controller - 2830
[0000FD00 - 0000FD1F]	Intel(R) ICH8 Family USB Universal Host Controller - 2835
[0000FE00 - 0000FE1F]	Intel(R) ICH8 Family USB Universal Host Controller - 2834
[0000FF00 - 0000FF07]	Intel(R) Q965/Q963 Express Chipset Family

B2.<Memory Address Map>

[00000000 - 0009FFFF]	System board
[000A0000 - 000BFFFF]	Intel(R) Q965/Q963 Express Chipset Family
[000A0000 - 000BFFFF]	PCI bus
[000C0000 - 000DFFFF]	PCI bus
[000E0000 - 000EFFFF]	System board
[000F0000 - 000FFFFFF]	System board
[00100000 - 7F6DFFFF]	System board
[7F6E0000 - 7F6FFFFFF]	System board
[7F700000 - 7F7FFFFFF]	System board
[7F700000 - FEBFFFFFF]	PCI bus
[D0000000 - DFFFFFFF]	Intel(R) Q965/Q963 Express Chipset Family
[E0000000 - EFFFFFFF]	Motherboard resources
[FD500000 - FD5FFFFFF]	Intel(R) ICH8 Family PCI Express Root Port 1 - 283F
[FD600000 - FD6FFFFFF]	Intel(R) Q965/Q963 Express Chipset Family
[FD900000 - FD9FFFFFF]	Intel(R) Q965/Q963 Express Chipset Family
[FDA00000 - FDAFFFFFF]	Intel(R) ICH8 Family PCI Express Root Port 3 - 2843
[FDB00000 - FDBFFFFFF]	Intel(R) ICH8 Family PCI Express Root Port 3 - 2843
[FDBE0000 - FDBFFFFFF]	Intel(R) PRO/1000 PL Network Connection
[FDC00000 - FDCFFFFFF]	Intel(R) ICH8 Family PCI Express Root Port 2 - 2841
[FDD00000 - FDDFFFFFF]	Intel(R) ICH8 Family PCI Express Root Port 2 - 2841
[FDDE0000 - FDDFFFFFF]	Intel(R) PRO/1000 PL Network Connection #2
[FDE00000 - FDEFFFFFF]	Intel(R) ICH8 Family PCI Express Root Port 1 - 283F
[FDF80000 - FDFBFFFF]	Microsoft UAA Bus Driver for High Definition Audio
[FDFD0000 - FDFD0FFF]	Intel(R) ICH8 Family SMBus Controller - 283E
[FDFFE000 - FDFFE3FF]	Intel(R) ICH8 Family USB2 Enhanced Host Controller - 2836
[FDFFF000 - FDFFF3FF]	Intel(R) ICH8 Family USB2 Enhanced Host Controller - 283A
[FEC00000 - FEC00FFF]	System board
[FED14000 - FED1DFFF]	System board
[FED20000 - FED9FFFF]	System board
[FEE00000 - FEE00FFF]	System board
[FFB00000 - FFB7FFFF]	System board
[FFB80000 - FFBFFFFFF]	Intel(R) 82802 Firmware Hub Device
[FFF00000 - FFFFFFFF]	System board

B3.<System IRQ Resources>

- (ISA) 0 System timer
- (ISA) 1 Standard 101/102-Key or Microsoft Natural PS/2 Keyboard
- (ISA) 3 Communications Port (COM2)
- (ISA) 4 Communications Port (COM1)
- (ISA) 6 Standard floppy disk controller
- (ISA) 8 System CMOS/real time clock
- (ISA) 9 Microsoft ACPI-Compliant System
- (ISA) 12 PS/2 Compatible Mouse
- (ISA) 13 Numeric data processor
- (PCI) 11 Intel(R) ICH8 Family SMBus Controller - 283E
- (PCI) 16 Intel(R) Q965/Q963 Express Chipset Family
- (PCI) 16 Intel(R) ICH8 Family PCI Express Root Port 1 - 283F
- (PCI) 16 Intel(R) ICH8 Family USB Universal Host Controller - 2834
- (PCI) 17 Intel(R) ICH8 Family PCI Express Root Port 2 - 2841
- (PCI) 17 Intel(R) PRO/1000 PL Network Connection #2
- (PCI) 18 Intel(R) ICH8 Family PCI Express Root Port 3 - 2843
- (PCI) 18 Intel(R) ICH8 Family USB Universal Host Controller - 2832
- (PCI) 18 Intel(R) ICH8 Family USB2 Enhanced Host Controller - 283A
- (PCI) 18 Intel(R) PRO/1000 PL Network Connection
- (PCI) 19 Intel(R) ICH8 2 port Serial ATA Storage Controller - 2825
- (PCI) 19 Intel(R) ICH8 4 port Serial ATA Storage Controller - 2820
- (PCI) 19 Intel(R) ICH8 Family USB Universal Host Controller - 2831
- (PCI) 21 Intel(R) ICH8 Family USB Universal Host Controller - 2835
- (PCI) 22 Microsoft UAA Bus Driver for High Definition Audio
- (PCI) 23 Intel(R) ICH8 Family USB Universal Host Controller - 2830
- (PCI) 23 Intel(R) ICH8 Family USB2 Enhanced Host Controller - 2836

Appendix C <Flash BIOS>

C.1 BIOS Auto Flash Tool

The board is based on Award BIOS and can be updated easily by the BIOS auto flash tool. You can download the tool online at the address below:

<http://www.award.com>

File name of the tool is "awdf flash.exe", it's the utility that can write the data into the BIOS flash chip and update the BIOS.

C.2 Flash Method

1. Please make a bootable floppy disk.
2. Get the last .bin files you want to update and copy it into the disk.
3. Copy awardflash.exe to the disk.
4. Power on the system and flash the BIOS. (Example: C:/ awardflash XXX.bin)
5. Re-start the system.

Any question about the BIOS re-flash please contact your distributors or visit the web-site at below:

www.globalamericaninc.com

Appendix D <Programming GPIO's>

The GPIO can be programmed with the MSDOS debug program using simple IN/OUT commands. The following lines show an example how to do this.

GPIO0.....GPIO7 bit0.....bit7

```
-o 4E 87 ;enter configuration
-o 4E 87
-o 4E 07
-o 4F 09 ;enable GPIO function
-o 4E 30
-o 4F 02 ;enable GPIO configuration
-o 4E F0
-o 4F xx ;set GPIO as input/output; set '1' for input,'0' for
        output
-o 4E F1
-o 4F xx ;if set GPIO's as output,in this register its value can
        be set
```

Optional :

```
-o 4E F2
-o 4F xx ; Data inversion register ; '1' inverts the current valus
        of the bits ,'0' leaves them as they are
-o 4E 30
-o 4F 02 ; active GPIO's
```

For further information ,please refer to Winbond W83627DHG datasheet.

Appendix E <Watch Dog timer Setting >

The watchdog timer makes the system auto-reset while it stops to work for a period. The integrated watchdog timer can be setup as system reset mode by program.

Timeout Value Range

- 1 to 255
- Second or Minute

Program Sample

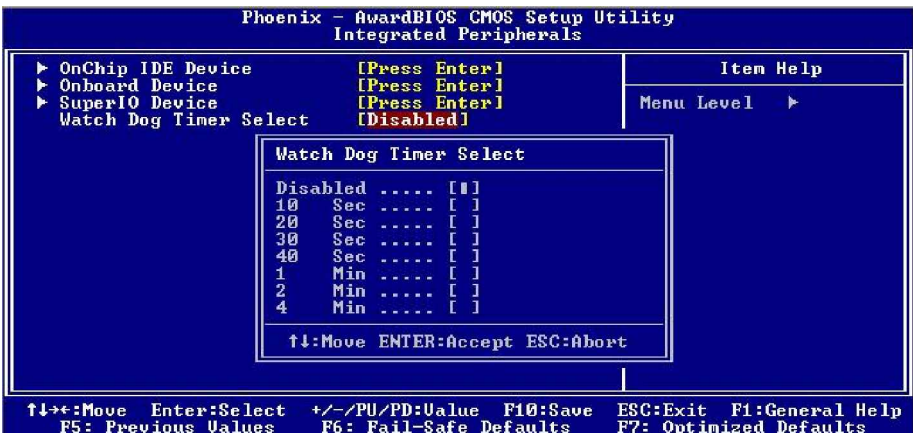
Watchdog timer setup as system reset with 5 second of timeout

```

4E, 87
4E, 87
4E, 07
4F, 08      Logical Device 8
4E, 30      Activate
4F, 01
4E, F5      Set as Second*
4F, 00
4E, F6      Set as 5
4F, 05
    
```

* Minute: bit 3 = 0; Second: bit 3 = 1

You can select Timer setting in the BIOS, after setting the time options, the system will reset according to the period of your selection.



Any advice or comments about our products and service, or anything we can help you with please don't hesitate to contact with us. We will do our best to support you for your products, projects and business.

Global American Inc.

Address: 17 Hampshire Drive
Hudson, NH 03051

TEL: Toll Free (U.S. Only) 800-833-8999
(603)886-3900

FAX: (603)886-4545

Website: <http://www.globalamericaninc.com>

E-Mail: salesinfo@globalamericaninc.com



Free Manuals Download Website

<http://myh66.com>

<http://usermanuals.us>

<http://www.somanuals.com>

<http://www.4manuals.cc>

<http://www.manual-lib.com>

<http://www.404manual.com>

<http://www.luxmanual.com>

<http://aubethermostatmanual.com>

Golf course search by state

<http://golfingnear.com>

Email search by domain

<http://emailbydomain.com>

Auto manuals search

<http://auto.somanuals.com>

TV manuals search

<http://tv.somanuals.com>