



GB Manager User Manual

Instructions for Downloading and Using the GB Manager with GolfBuddy Plus, Pro and Tour

Introduction

The GolfBuddy Manager (GB Manager) allows you to update the course library in your GolfBuddy Plus, Pro or Tour GPS Rangefinder. Although the GolfBuddy comes with courses already pre-loaded into the unit, we are continually updating our course library by adding new courses and updating our existing ones. The GB Manager allows you to keep your GolfBuddy GPS unit updated with the latest course data.

The GB Manager also allows you to customize your GolfBuddy by adding custom graphics and logos to your welcome screen, and allows you to enter your personal information in case your unit is lost or misplaced. It also allows you to view and track your scores from up to 1000 rounds of golf that you are able to store in your unit. You can also perform firmware upgrades and module updates as they become available, to ensure that your unit is functioning at its optimal level.

This manual will guide you through the steps to download the GB Manager, set up a user name and password and will give you instructions on how to use each function on the GB Manager.

If you have any questions, please free to contact our technical support department at (888) 296-1428 between the hours of 8:00 a.m. to 8:00 p.m. EST, and someone will be happy to assist you.

Chapter 1 - Setting up the GB Manager

Step 1 - Download and Install the GolfBuddy Manager

* Important: Do not connect your GolfBuddy to your computer until after you have installed the GB Manager and restarted your computer.

**In order to download GB Manager, your internet browser default must be set to Microsoft Internet Explorer

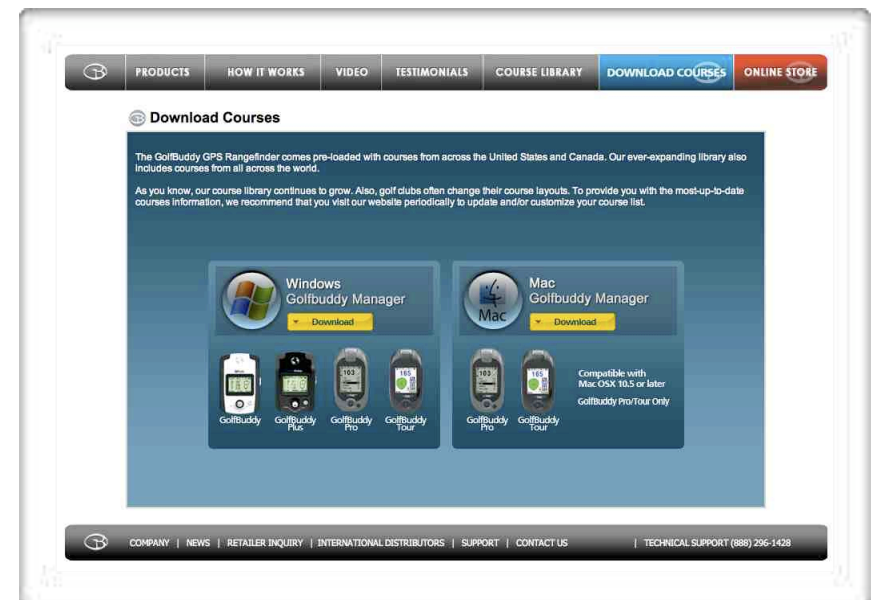
1.1 Go to <http://www.golfbuddyglobal.com>

1.2 Click on the **Download Courses** link on the top menu of the homepage. (fig 1)

1.3 On the **Download Courses** page, click on one of the yellow bars to install the GolfBuddy Manager (GB Manager) for either Windows or Mac, depending on which operating system you are using. (fig. 2)



(fig. 1)



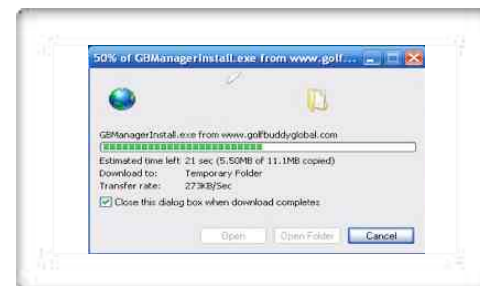
(fig. 2)

1.3.4 Next, an installShield Wizard, welcome screen will appear, (fig. 7) Click “Next” to continue.



(fig.7)

1.3.5 The InstallShield Wizard will then ask you if you would like to begin the installation. (fig. 8) Click “Install” to proceed.



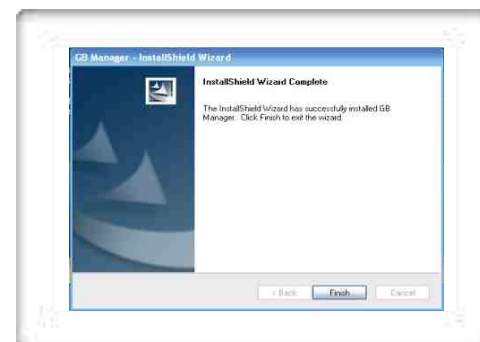
(fig.8)

1.3.6 Once you begin the installing the GB Manager, a progress bar will appear. (fig. 9)



(fig.9)

1.3.7 After the GB Manager has been successfully installed, please make sure to restart your computer before proceeding to the next step.



(fig.10)

Step 2 – Registration: Creating a User Name and Password

In order to access the GB Manager, you must first register and create a user name and password.

2.1 After completing the download and install process in Step 1, the GB Manager log in window should have automatically appeared on your screen. (fig. 11)

After the download process is complete, the GB Manager icon should have been automatically added onto your computer's desktop. (fig. 12) You may double click on this icon each time you would like to access the GB Manager.



(fig. 11)

2.2 On the GB Manager log in window, (fig. 11) click the “*Sign Up*” button towards the bottom of the window to begin the registration process.

Note - Before accessing the registration page, please check the following:

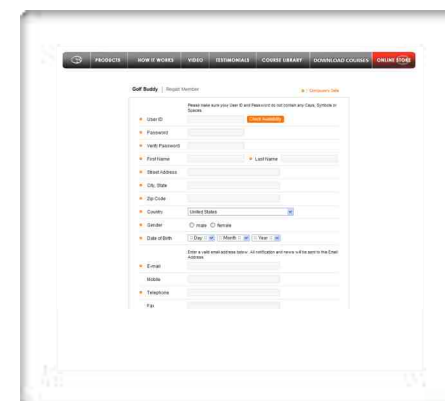
- 1) Make sure you have an active internet connection
- 2) Make sure your default internet browser is set to Windows Internet Explorer



(fig. 12)

2.3 After you click on the “*Sign Up*” button, your internet browser will open up and take you to the registration screen on your internet browser. (fig. 13) Fill out all the required information to complete the process and click submit. Once you have completed the registration, you will be directed to the main page of the GolfBuddy website. You may close your internet browser at this time, as you will no longer need it open in order to run the GB Manager.

Note: Please be sure to click the orange tab labeled “*Check Availability*” next to the User ID blank to check if the User ID you have chosen has not already been taken.

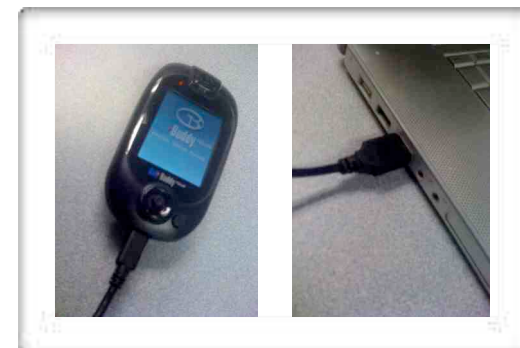


(fig. 13)

Step 3 – Logging in to GB Manager

After you have completed the registration process you are ready to log in to the GB Manager.

3.1 Connect your GolfBuddy unit to your computer by plugging in one end of the USB data cable into your GolfBuddy unit, (fig. 14) and the other end into your computer's USB port. (fig. 15)



(fig.14)

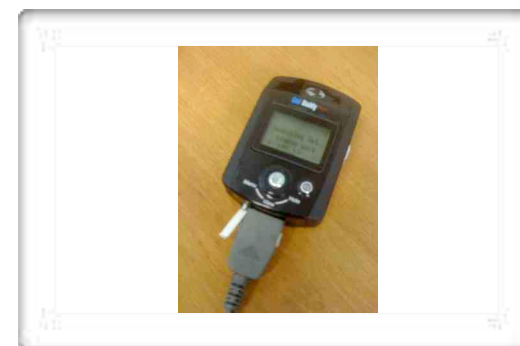
(fig.15)

GolfBuddy Plus users

If you are using a GolfBuddy Plus, you must perform an additional step before logging in to the GB Manager.

- 1) Make sure that your unit is powered off.
- 2) Plug the USB Data Cable into your unit.
- 3) Push in and hold the toggle button, and while you are still holding in the toggle button, push in the power button until you see the message "*Sync With PC*" on the display.

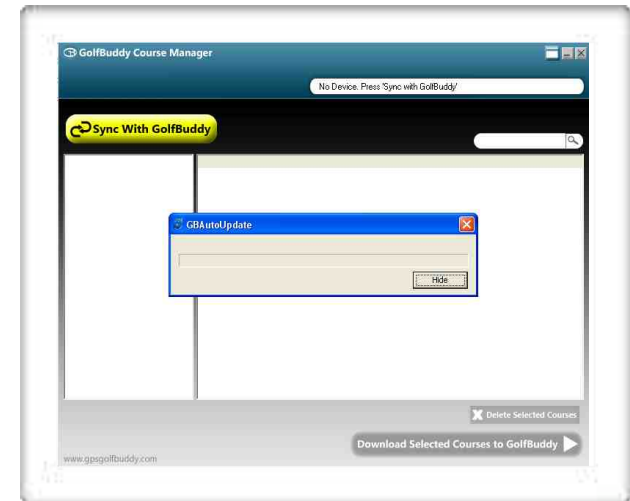
*****Note:** DO NOT disconnect the USB Data Cable from the device at any time, when a progress bar appears on the GB Manager screen. Doing so will result in the unit freezing up and will require the unit to be sent in and serviced by one of our technicians.



(fig.15b)

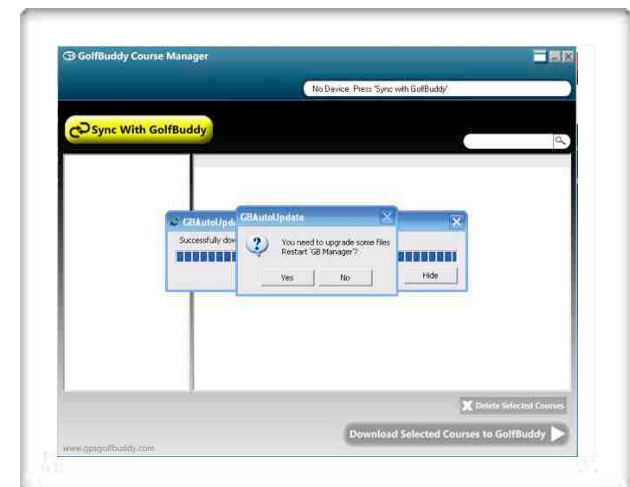
3.2 Go to your computer's desktop and double click the GB Manager icon. (fig. 12) The GB Manager log in window will appear once you click on the icon. (fig. 11) Type in your new User ID and Password and click the green "Log In" tab.

3.3 Once you complete the log in process, the GB manager window will appear and will begin performing an auto update. (fig. 16)



(fig.16)

When the auto update is complete, you will be prompted to restart the GB Manager. (fig. 17)
Click “yes” and repeat step 3.3 to log in to the GB Manager again.



(fig.17)

Chapter 2 - Using the GB Manager

The GolfBuddy Manager (GB Manager) allows you to manage your courses, perform firmware upgrades, track your scores, and customize your GolfBuddy by adding images or logos to your welcome screen.

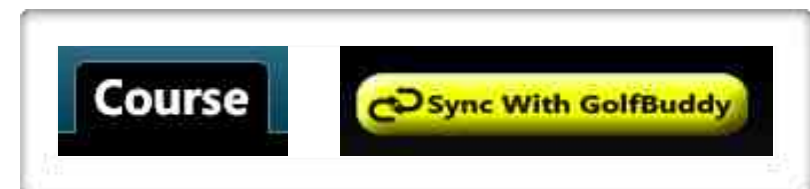
1. Course Tab

The **Course** tab allows you to manage the courses in your GolfBuddy unit by adding new courses, and updating existing course data your unit when they are revised. (fig. 18)



(fig.18)

1.1 Searching For Courses - Click on the tab labeled "Course" (fig.19) and click then click the yellow tab labeled "Sync With GolfBuddy" (fig.20) to refresh the page.

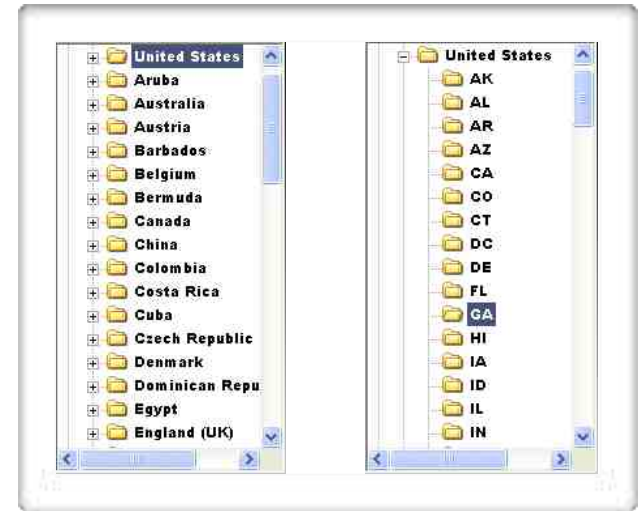


(fig.19)

(fig.20)

1.1.1 Click on a country along the column on the left, (fig.21)

A list of courses for that country will appear along the right column. If you click on a country, a list of states or provinces will appear for that country as subfolders in the column. (fig.22)



(fig.21)

(fig.22)

You can then select an individual subfolder to view a list of courses available for that state or provinces in the right column. (fig. 23)

The image shows a screenshot of a table with 5 columns: Num., Club, Course, City, and Total. The table contains 17 rows of data. The 'Total' column has a dropdown arrow next to it.

Num.	Club	Course	City	Total
1	Eagle's Landin...	Creek	Stockbridge	Latest
2	Eagle's Landin...	Lake	Stockbridge	Latest
3	Eagle's Landin...	New	Stockbridge	Latest
4	Trenton GC	Trenton	Trenton	New
5	Alfred "Tup" H...	Alfred TupHol...	Atlanta	Latest
6	Alpharetta Athl...	West	Alpharetta	Latest
7	Southwestern ...	Southwestern	Americus	Latest
8	Anisley GC	Anisley	Atlanta	Latest
9	Settingdown Cr...	Settingdown Cr...	Roswell	Latest
10	Apple Mountai...	Apple Mountain	Clarksville	Latest
11	Applewood GC	Applewood	Keyesville	Latest
12	Arbor Springs...	Arbor Springs	Newnan	Latest
13	Arrowhead CC	Arrowhead	Jasper	Latest
14	Athens CC	East	Athens	Latest
15	Athens CC	North	Athens	Latest
16	Athens CC	South	Athens	Latest
17	Atlanta Athletic...	Highlands	Duluth	Latest

(fig.23)

You may also search for individual courses by typing in a course name in the search query window located right above the right column. (fig. 24) If the course you are searching for is in our library, it will appear in the right column.



(fig.24)

1.1.2 Notice the five tabs along the top of the right column in the Course window. (Num., Club, Course, City, and Total). (fig. 25)



(fig.25)

By clicking on these tabs, you can categorize and view the courses by course name, city, etc. Notice the drop menu on the far right labeled “total”. (fig. 26) By clicking on this tab, you may scroll down and choose either “New, Latest, or Renovated”. Choosing one of these options will narrow down the list, and only show the selection you wish to view.



(fig.26)

A total number of courses in GolfBuddy’s course library can be found towards the bottom of the window under the right column. (fig. 27)



(fig.27)

New - Newly mapped courses that have been updated to GolfBuddy’s library but have not been loaded into your unit.

Latest - Data is up to date for this course and is already loaded on your unit. No other action needs to be taken.

Renovated - This course is on your unit, but has been updated. These courses should be reloaded to your unit to ensure that you have the most correct and accurate data for this course.

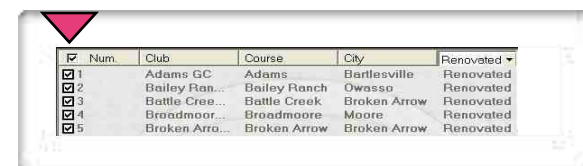
1.2 Downloading Courses

1.2.1 Once you have located the courses you wish to download, check off the white boxes in the right column next to the course or courses you wish to download. (fig. 28)



(fig.28)

Note: Checking off the white box in the tab labeled “Num” will select all the courses in the right column. (fig. 29)



(fig.29)

1.2.2 After you have checked off the selected the courses you wish to update, click the green button labeled “Download Selected Courses to GolfBuddy” to download them to your unit. (fig. 30)

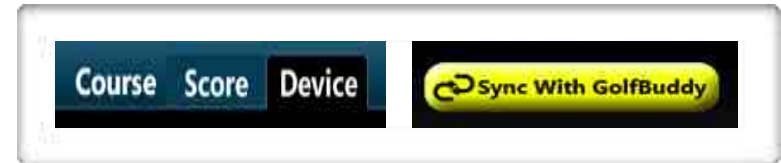


(fig.30)

3. Device Tab

Allows you to customize your GolfBuddy's welcome screen with images or logos that will appear each time your GolfBuddy is powered on, and allows you to type in your user information (name / phone number). Also allows you to perform software updates as they become available.

3.1 Click on the "Device" tab (fig. 36) in the GB Manager, then click "Sync with GolfBuddy" (fig. 37)

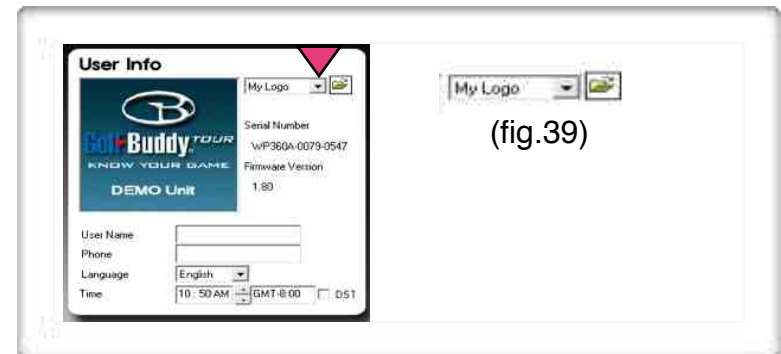


(fig.36)

(fig.37)

3.2 Adding Images to the Welcome Screen - You may add up to three images that will appear each time your GolfBuddy unit is powered on.

3.2.1 On the "User Info" window on the left, (fig. 38) click on folder icon next to the "My Logo" drop menu. (fig. 39)



(fig.38)

(fig.39)

3.2.1 On the "User Info" window on the left, (fig. 38) click on folder icon next to the "My Logo" drop menu. (fig. 39) Once you click on the icon, a search window will appear over the GB Manager window. (fig. 40) Choose a picture from your computer's hard drive and click "OK".



(fig. 40)

(cont. on next page)

(3.2.1 Continued)

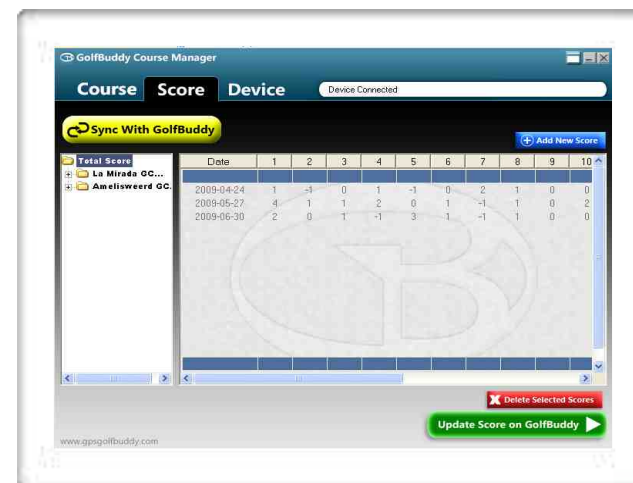
Important Note: after choosing a logo, you must click the green button labeled “*Download User Information*” to save your logo on your unit. (fig. 41)

To set your *Sub Logo* and *Main logo*, click on the drop menu (fig. 42) make a selection, and repeat the steps to insert an additional logo.



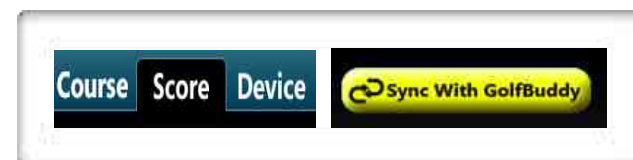
2. Score

The GolfBuddy allows you to track and store scores for up to 1000 rounds in the unit. The score function on the GB Manager makes it easy for you to view your list of scores by categorizing them into folders that are sorted by the course name. It also allows you to add, delete and modify courses that you have recorded onto your unit. (fig.31)



(fig.31)

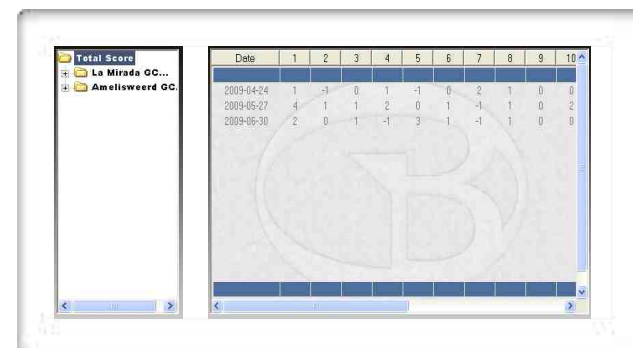
2.1 Viewing Scores - To bring up a list of your recorded scores, click on the “Score” tab (fig. 32) and then click “Sync with GolfBuddy”. (fig. 33).



(fig.32)

(fig.33)

2.1.1 The left column lists all the courses which you have recorded your scores on. Highlighting “Total Scores”, (fig.34) will list all of the scores in the right column, (fig.35) and highlighting a single course on the list will bring up only the scores you have recorded on that particular course.



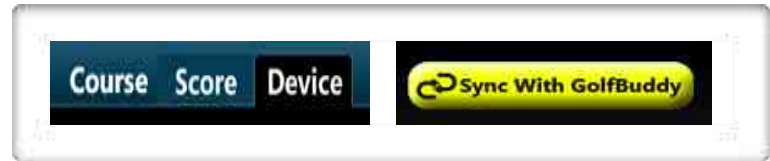
(fig.34)

(fig.35)

3. Device

Allows you to customize your GolfBuddy's welcome screen with images or logos that will appear each time your GolfBuddy is powered on, and allows you to type in your user information (name / phone number). Also allows you to perform software updates as they become available.

3.1 Click on the "Device" tab (fig. 36) in the GB Manager, then click "Sync with GolfBuddy" (fig. 37)

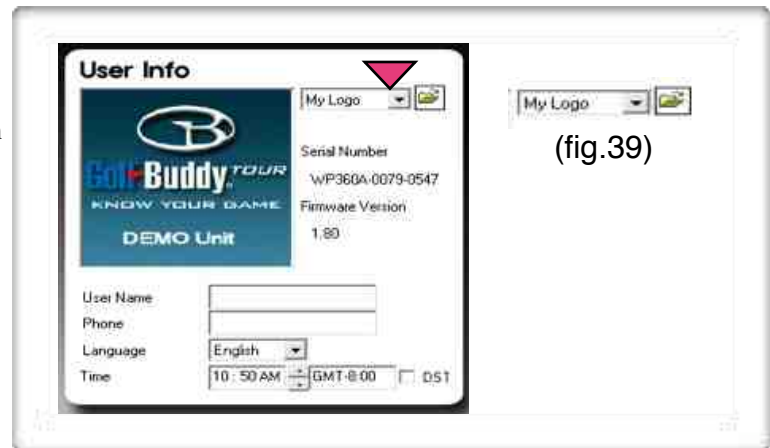


(fig.36)

(fig.37)

3.2 Adding Images to the Welcome Screen - You may add up to three images that will appear each time your GolfBuddy unit is powered on.

3.2.1 On the "User Info" window on the left, (fig. 38) click on folder icon next to the "My Logo" drop menu. (fig. 39)



(fig.38)

(fig.39)

3.2.1 On the "User Info" window on the left, (fig. 38) click on folder icon next to the "My Logo" drop menu. (fig. 39) Once you click on the icon, a search window will appear over the GB Manager window. (fig. 40) Choose a picture from your computer's hard drive and click "OK".



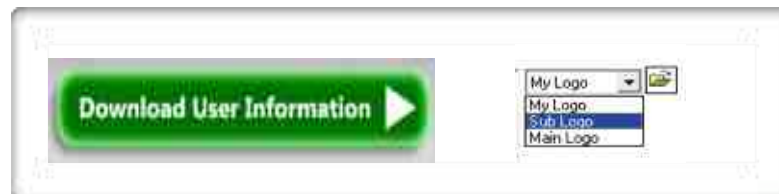
(fig.40)

(cont. on next page)

(3.2.1 Continued)

Important Note: after choosing a logo, you must click the green button labeled “Download User Information” to save your logo on your unit. (fig. 41)

To set your *Sub Logo* and *Main logo*, click on the drop menu (fig. 42) make a selection, and repeat the steps to insert an additional logo.

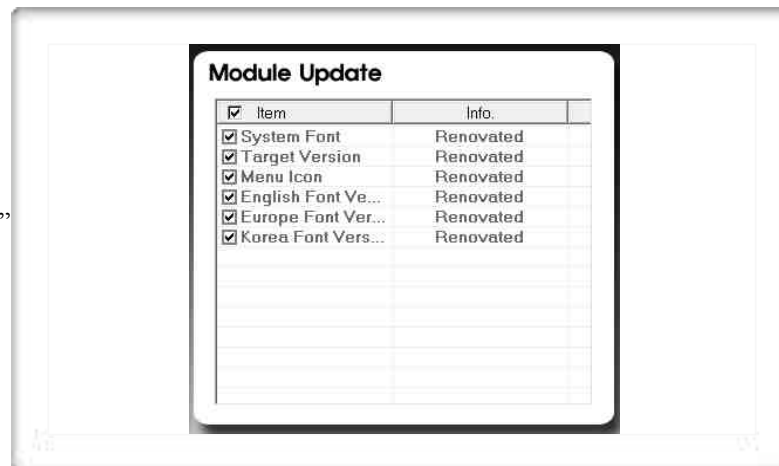


(fig.41)

(fig.42)

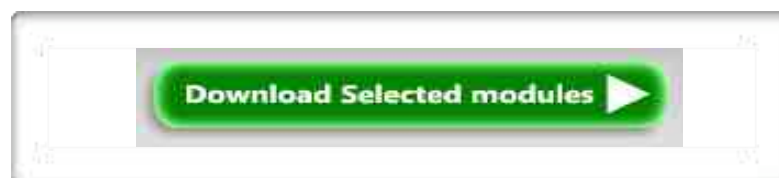
3.3 Module Update

A list of updates is shown in the “**Module Update**” window (fig.43) under the “**Device**” tab. Next to each individual item, under the “*info*” tab, it will be labeled as either “*Latest*, *New* or *Renovated*”. If all the updates are shown as “*Latest*”, it means that your software is current and up to date. However, if they are listed as either, “*New*” or “*Renovated*”, the updates should be downloaded to ensure that your unit performs at its optimum level.



(fig.43)

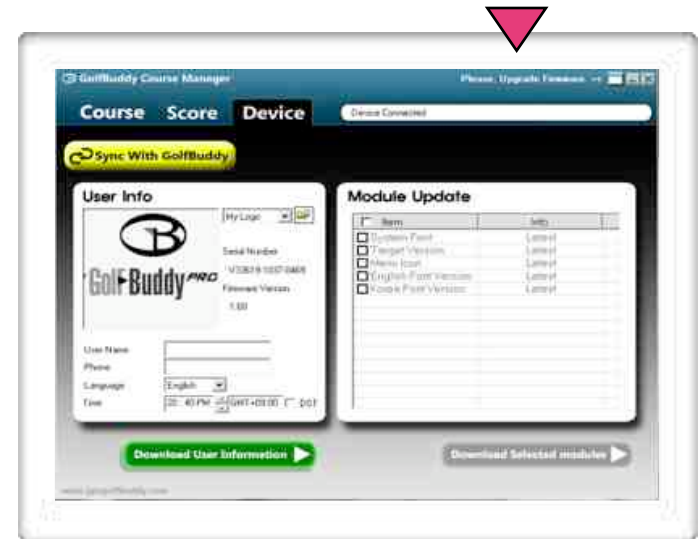
3.2.1 To download module updates, select the box next to the update you wish to download, and then click the green button labeled “Download Selected Modules” . (fig. 44)



(fig.44)

4. Firmware Upgrade

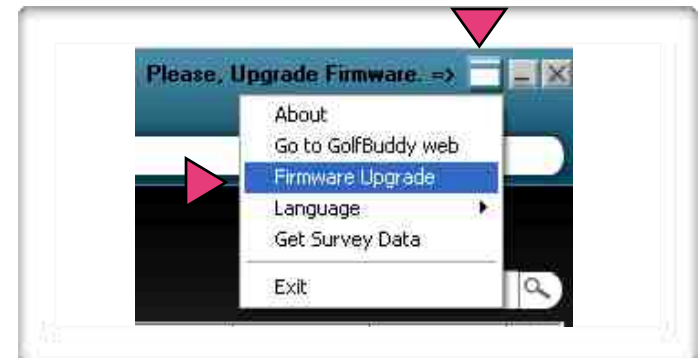
If your GolfBuddy unit is in need of a firmware upgrade, a message prompting you to “*Please Upgrade Firmware*” will appear and flash on the upper right corner of the GB Manager window. (fig. 45)



(fig.45)

4.1 Performing Firmware Upgrade

4.1.1 To begin performing the firmware upgrade, click on the small white box next to the “*Please Upgrade Firmware*” message and select “*Firmware Upgrade*” from the drop menu. (fig. 46)



(fig.46)

4.1.2 Next, a *File Download – Security Warning* will appear. Click Run to continue. (fig. 47)

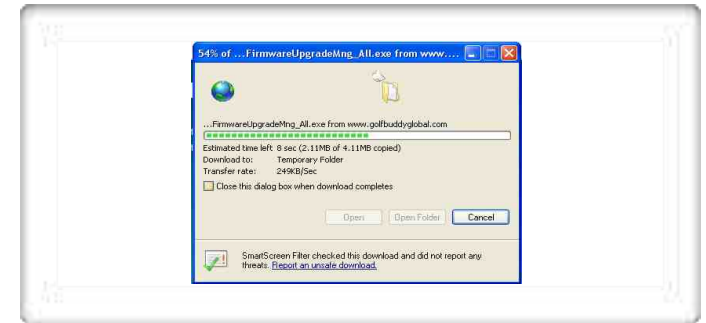
(Cont. on next page)



(fig.47)

(4.1.2 Continued)

Once you click Run, a download progress bar will appear. Wait for the file to finish downloading and do not press cancel. Once the download is complete, another Security Warning will appear. (fig. 48)



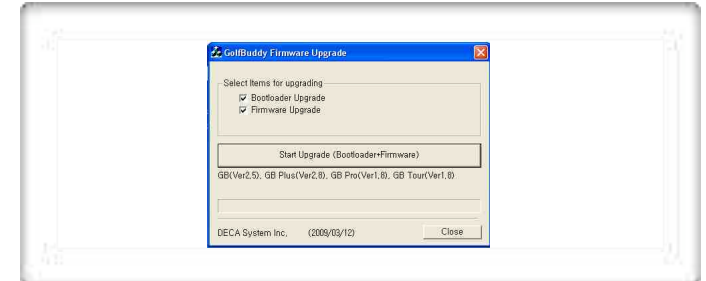
(fig. 48)

Click run again. (fig. 49)



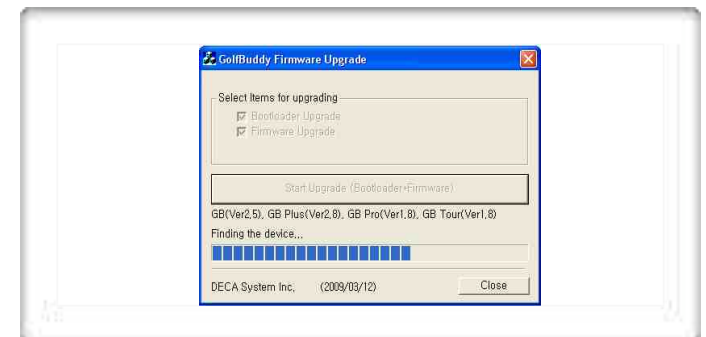
(fig. 49)

4.1.2 Next, a "GolfBuddy Firmware Upgrade" window will appear. (fig. 50)



(fig. 50)

Click "Start Upgrade (Bootloader + Firmware)" and wait for the progress bar to indicate that the installation is complete. (fig. 51)



(fig. 51)

Free Manuals Download Website

<http://myh66.com>

<http://usermanuals.us>

<http://www.somanuals.com>

<http://www.4manuals.cc>

<http://www.manual-lib.com>

<http://www.404manual.com>

<http://www.luxmanual.com>

<http://aubethermostatmanual.com>

Golf course search by state

<http://golfingnear.com>

Email search by domain

<http://emailbydomain.com>

Auto manuals search

<http://auto.somanuals.com>

TV manuals search

<http://tv.somanuals.com>