



design | performance

intelligent wireless for extremely demanding applications





## REV concert handheld

- A rugged, fully machined aluminum handle about the size and shape of a wired microphone encourages proper microphone technique for better performances.
- Optimized analog audio path developed to provide the truest representation of a wired microphone sound possible in a wireless system.
- Interchangeable microphone RC2 head allows a choice of elements to fit the vocalist's style and environment.  
Microphone choices include:  
– N/DYM® 767a, N/DYM 967, RE-410, RE-510
- Backlit LCD display controlled by three buttons mounted out of harm's way inside the battery compartment.
- RF transmit power and audio gain are controlled from the LCD screen controls, no tools required.
- Battery level gauge always visible on the LCD display.
- Two AA batteries power the REV-H for over ten hours of continuous use.
- 5 or 50mW selectable RF output power so you can optimize range or maximize the number of systems on stage.



## bodypack transmitter

- Cast magnesium case is extremely light and durable with a cell phone style beltclip or flat metal clip for comfortable wearing options.
- Backlit LCD display and three control buttons mounted inside the battery housing make programming a channel or frequency is quick and easy.
- Software controlled Guitar mode switches in a 20dB pad, moves the low end response down to 30Hz and changes the audio circuit to optimized guitar mode.
- One on/off switch that also acts as a mute, great for pauses in presentations and worship services.
- On/off button can be disabled to prevent accidental turnoffs during a performance.
- 5 or 50mW selectable RF output power so you can optimize range or maximize the number of systems on stage.
- Unique Smart-Battery circuit means there is no way to put the 9V battery in wrong.
- Battery level gauge always visible on the LCD display. Low battery LED will light when the battery needs a replacement.
- RF transmit power and audio gain are controlled from the LCD screen controls, no tools required.



## Electro-Voice® has been at the forefront of wireless

microphone technology since the advent of the MS-1000 and DNX™ audio processing in 1989. In the '90s EV invented the first scanning wireless, EV® NRU, and in 2002 EV® reinvented wireless with the professional RE-1, currently on tour with Zakk Wylde, Gretchen Wilson, the Reverend Al Green, Parliament, Static-X, and Megadeth, to name just a few. Since its inception, the RE-1 has been applauded by numerous bands, performers and sound engineers as a complete wireless solution – combining outstanding sound, simple set-up, and roadworthy construction. Now Electro-Voice establishes a whole new paradigm in professional wireless.

### enter: REV.

Designing a new EV wireless system proved a daunting task to even the most experienced engineers on the EV team. EV had already proven that it had created a superior product in the RE-1, so creating a product that was sonically superior was a tall order. However, EV's engineers took into account the wish lists from several of today's top FOH engineers—as well as customers from all walks of pro audio—and emerged with an improvement to the RE-1. The result? Perhaps the best sounding and most roadworthy professional wireless created in the industry to date.

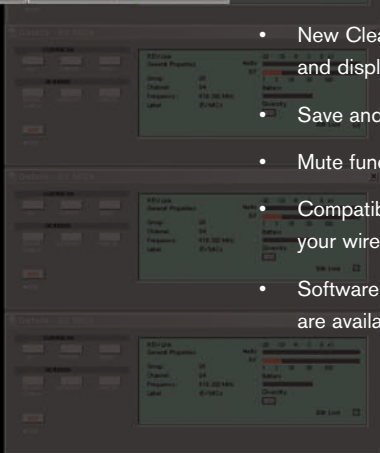
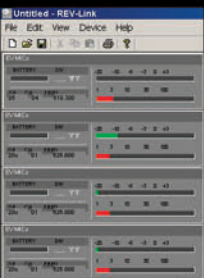
EV's new REV professional wireless system offers an array of new and different features from its predecessor the RE-1. REV's optimized analog audio path was developed to provide the truest representation of a wired microphone sound possible in a wireless system. In addition, REV-Link™ PC software enables remote monitoring, control and programming over a CAN bus connection through an EV UCC-1 converter or EV Netmax N8000 controller.

want full control? you've got it.



## REV-Link software

- Complete monitor and control of all receiver front panel functions.
- Low battery or Low RF level alarms to alert you during a performance.
- Run all forms of ClearScan™ to select clear channels even when mixing frequency bands.
- New ClearScan™ Analyzer mode allows you to sweep the entire band and display the results like a frequency analyzer.
- Save and recall scenes or channel settings for different locations.
- Mute function lets you silence a noise channel at the receiver.
- Compatible with IRIS-Net™ audio networking software so you can monitor your wireless microphones on the same network as your EV remote amplifiers.
- Software is included on CD-ROM with every REV receiver and updates are available at no charge on the EV website [www.electrovoice.com](http://www.electrovoice.com).



Customers also asked for the seamless integration of large numbers of wireless systems. Factory set channel groups allow up to 16 systems to operate simultaneously in one frequency band. Programmable in 25 kHz steps across 24 MHz operating bandwidth, there are over 950 possible channels so you can always find a clear channel. Advanced ClearScan™ automatic group and channel selection allows quick, simple setup in crowded RF environments, which mitigates stress in critical, real-world production situations.



## single & dual receiver

- Optimized analog audio path developed to provide the truest representation of a wired microphone sound possible in a wireless system.
- REV-Link™ PC software for remote monitoring, control and programming over a CAN bus connection through a UCC-1 converter or Netmax N8000.
- Factory set channel groups allow up to 16 systems to operate simultaneously in one frequency band. For groups up to 44 systems, EV can help with the coordination and custom groups are easily programmed.
- Programmable in 25 kHz steps across 24 MHz operating bandwidth, there are over 950 possible channels so you can always find a clear channel.
- Advanced ClearScan™, automatic group and channel selections, allows quick, simple setup.
- Backlit LCD Display shows the Sound Engineer the Group/Channel, transmitter battery status, diversity operation, RF and Audio level meters, and space for a custom name
- REV-D Dual Receiver includes antenna pass through jacks so up to six receivers can be connected to just two antennas. All required cables are included.
- Specially designed "Sound Check" mode provides the ability for one person to walk test the microphone in the performance space with tangible results.
- Patented DSP Posi-Phase™ Diversity System for maximum range and audio quality.
- Combination Tone plus Amplitude squelch for maximum flexibility.
- Balanced XLR line level output and 1/4-inch unbalanced line-level outputs adjustable from the front panel to match the application.
- Guitar mode matches the optimized instrument audio with the REV-BP bodypack.
- Internal universal switching power supply, headset monitoring jack, and DC power on antenna input jacks for optional RF amplifier
- Integrated rack mount ears and front mount antenna cables included.
- Three-Year Limited Warranty.

REV offers two handheld options: a stylish metal compact handle for Concert and Broadcast, and the user friendly Presentation Handheld for rental house and other applications. As well as offering four capsule options, REV features EV's one-of-a-kind guitar optimization setting, which is unique to EV. Guitarists and bassists endorse the REV for its superior, transparent sound, which lacks the artifacts and compression most guitar wireless systems introduce to the signal path. REV is the only wireless guitar system that preserves the tone each player has worked so hard to achieve.



## presentation handheld

- A tough high impact ABS shell using the new RC2 interchangeable microphone elements provides an excellent alternative handheld for rental houses and other users at a lower price point.
- LCD display controlled by three buttons mounted out of harms way inside the battery compartment.
- Accessible on/off switch that also acts as a mute, great for pauses in presentations and worship services.
- On/off button can be disabled to prevent accidental turnoffs during a performance.
- Audio gain is controlled from the LCD screen controls, no tools required.
- One 9V battery powers the REV-PH for over eight hours of continuous use and the Smart-Battery™ feature means there is no way to put the battery in wrong.

## accessories and parts

	model #	order #
Omnidirectional MicroMini™ Lapel Mic:	RE90TX	71753318
Unidirectional MicroMini™ Lapel Mic:	RE92TX	301456000
Lightweight omni headworn Mic:	RE97TX	301XXX000
Headworn Cardioid Condenser Mic:	HM7	HM7
1/2 Wave Rx Antenna (C3 and C5 Bands):	FA-1	860031
1/2 Wave Rx Antenna (C1 and C2 Bands):	CLA-3	870658-3
1/2 Wave Antenna Bracket:	AB-2	71138000
UHF Antenna Amplifier (520 - 806 MHz):	UAA-500	7186400
Antenna /Pwr Distribution (600-780 MHz):	APD4+	301614000
Termination Plug For APD4+:	TP-2	650095
Directional Rx Antenna (450-900 MHz):	LPA-500	LPA500
Low Loss Coaxial Antenna Cable:	CXU-25 ft	71151025
	CXU-50 ft	71151050
	CXU-75 ft	71151075
	CXU-100 ft	71151100
Bodypack Pouch:	WP-1000	879553
Guitar Cord:	MAC-G2	879526
767a Dynamic Head:	RC2-767	ACC000008D7
967 Dynamic Head:	RC2-967	ACC000008D9
RE410 Condenser Head:	RC2-410	ACC000008C4
RE510 Condenser Head:	RC2-510	ACC000008C5
Mic Stand Adapter:	MSA-REV	880308



“

"I've been around the world a dozen times with my EV wireless systems, without incidence of failure. It sounds great. With the advent of the REV, I am even more excited because they're improved on wireless that already stands above the rest of the competitors!"

– **Bruce Reiter, FOH engineer**  
[Static-X, Megadeth, Hatebreed]

"Only EV wireless can handle the blood, guts and abuse of a GWAR show. I defy any other touring pro to put his wireless mics through such carnage and still have them work perfectly. We've been touring with the same EV wireless system for years now, and it's still going strong. And next time we hit the road, it will be with the new REV. For a night-after-night reliability and performance there's no other brand I trust more. I'll show you a pile of broken equipment from other manufacturers. They just can't hang. EV can."

– **Jeremy Smith, FOH engineer**  
[GWAR]

"Night after night I rely on the RE-1 to perform. Now, after hearing and using the REV, I have to say that I'm floored by how great it sounds. All the best of the RE-1 and then some. Right on, guys!"

– **Steve "Sonny" Taylor, FOH engineer**  
[Neal McCoy]

"George Clinton abuses wireless. Our tours are notoriously hard on equipment. EV wireless is rugged and roadworthy and always sounds great. It's made my job that much easier! "

– **Al Davis, FOH engineer**  
[Al Green/Parliament/George Clinton]

"My EV wireless captures the nuances of my bass tone like no other. It rocks! And I don't trust just any other wireless – I'm playing with the Prince of Darkness!"

– **Blasko, bassist**  
[Ozzy Osbourne]

"I recently had the chance to test run the EV REV wireless on tour with Gretchen Wilson. What can I say? It sounds fantastic and is perfect for highly critical, professional applications like ours."

– **David Haskell, FOH engineer**  
[Gretchen Wilson]



## REV-S single and REV-D dual receivers

### Front Panel Controls :

On/Off, Menu, Set, Up, Down Buttons  
1/4" Headset Jack with Selector and Volume

### Indicators LCD:

Group, Channel, Diversity, Label, Set-up

### Backlit Display:

Menu-driven dot matrix

### Back Panel Connectors:

1/4" unbalanced adjustable line level output  
XLR balanced mic/line level output  
RJ-45 CAN interface (x2, parallel)

### Antennas:

Detachable 1/2 wave

### RF Specifications

#### Frequency Range:

C1 Band 614 – 638 MHz (TV Channels 37-41)  
C2 Band 650 – 674 MHz (TV Channels 44-47)  
C3 Band 674 – 698 MHz (TV Channels 48-51)  
C5 Band 722 – 746 MHz (TV Channels 56-59)

### Number of Channels:

950 possible (programmable in 25kHz steps)

### Diversity:

DSP PosiPhase™ True Diversity

### Squelch:

Tone Code plus Adjustable Amplitude

### Receiver Type:

Synthesized PLL Agile UHF

### RF Sensitivity:

<0.8uV for 12 dB SINAD

### Audio Specifications

#### Frequency Response:

100 – 15 kHz +/- 2 dB Microphone  
30 – 15 kHz +/- 2 dB Instrument

### Audio Output Level:

Balanced Line Level 10mV – 1V RMS Adjustable  
Unbalanced Output Adjustable  
8 mV to 0.755V RMS (100k ohm load)

### Distortion:

Less than 0.5% (@ 1kHz, 40 kHz deviation)

### Signal to Noise Ratio:

> 110 dB (A)

### Dynamic Range:

>100 dB

### REV-D Antenna Output:

TNC

### Powered Antenna Inputs:

12Vdc,15mA

### Internal Switching Power Supply:

Universal Cord, 90–240 VAC, 50–60 Hz

### CAN Bus Monitoring & Control:

REV-Link Software

### Size:

1.72" H x 16" W x 12" D  
43.7 mm H x 406.4 mm W x 304.8 mm D

## REV-H handheld transmitter

### Controls:

Power On/Off, Set, Up, Down Buttons

### Displays:

Backlit LCD display showing: Battery Level,  
Channel/Group or Frequency

### Battery Life:

10 hours with two AA alkaline typical

### Antenna:

Internal Proprietary

### Microphone Elements:

EV N/D 767a or N/D 967 Dynamic  
EV RE510 or RE410 Condenser

### Case Material:

Machined Aluminum

### RF Output:

Normal: 5 mW typical  
High: 50 mW typical

### Size:

24.8cm (9.75 in.) x 52mm (2.04 in.)  
(Length x max diameter):

## REV- BP bodypack transmitter

### Controls:

Power On/Off, Set, Up, Down Buttons

### Indicators:

Red LED Low Battery Indicator, Back lit  
LCD display showing: Battery Level,  
Channel/Group, or Frequency

### Battery Life:

8 hours with 9V alkaline typical

### Antenna:

External 1/4 wave detachable

### Connector:

TA4F input for microphone Pin 1 ground,  
Pin 2 Mic input Pin 3 +5V Bias,  
Pin 4 +5V through 3k ohm

### RF Output:

Normal: 5 mW typical  
High: 50 mW typical

### Case Material:

Cast Magnesium

### Size:

3.75 in. H x 2.6 in. W x 0.9 in. D  
94 mm H x 66 mm W x 23 mm D

Americas—Headquarter Americas  
Telex Communications Inc.  
12000 Portland Ave South,  
Burnsville, MN 55337, USA  
USA—Ph: 1-800-392-3497  
Fax: 1-800-955-6831  
Canada—Ph: 1-866-505-5551  
Fax: 1-866-336-8467  
Latin America—Ph: 1-952-887-5532  
Fax: 1-952-736-4212

Europe, Africa & Middle-East  
Headquarter EAME  
EVI Audio GmbH  
Hirschberger Ring 45, D-94315,  
Straubing, Germany  
Phone: +49 9421 706-0,  
Fax: +49 9421 706-265

France: EVI Audio France S.A.,  
Parc de Courcerin,  
Allée Lech Walesa,  
F 77185 Lognes, France  
Phone: +33 1-6480-0090  
Fax: +33 1-6006-5103

UK: Shuttlesound,  
4 The Willows Centre,  
Willow Lane, Mitcham,  
Surrey CR4 4NX, UK  
Phone: +44 208 646 7114  
Fax: +44 208 254 5666

Asia & Pacific Rim—Headquarter Asia  
Singapore: Telex Pte. Ltd.  
3015A Ubi Road 1,  
05-10 Kampong Ubi Industrial  
Estate,  
Singapore 408705  
Phone: +65 6746-8760,  
Fax: +65 6746-1206

Japan: EVI Audio Japan Ltd.  
5-3-8 Funabashi, Setagaya-Ku,  
Tokyo, Japan 156-0055  
Phone: +81 3-5316-5020,  
Fax: +81 3-5316-5031

Hong Kong: Telex EVI Audio (HK)  
Ltd.  
Unit 5,1/F, Topsail Plaza  
11 On Shum Street  
Shek Mun, Shatin HK  
Phone: +852 2351-3628,  
Fax: +852 2351-3329

China: Telex EVI Audio (Shanghai)  
Ltd.  
Room 2210-2215,  
Tower B, Far East International Plaza,  
No. 317, Xianxia Road,  
Shanghai, China, PC: 200051  
Phone: +86 21-6235-1677  
Fax: +86 21-6235-1676





## Free Manuals Download Website

<http://myh66.com>

<http://usermanuals.us>

<http://www.somanuals.com>

<http://www.4manuals.cc>

<http://www.manual-lib.com>

<http://www.404manual.com>

<http://www.luxmanual.com>

<http://aubethermostatmanual.com>

Golf course search by state

<http://golfingnear.com>

Email search by domain

<http://emailbydomain.com>

Auto manuals search

<http://auto.somanuals.com>

TV manuals search

<http://tv.somanuals.com>