

FEATURES

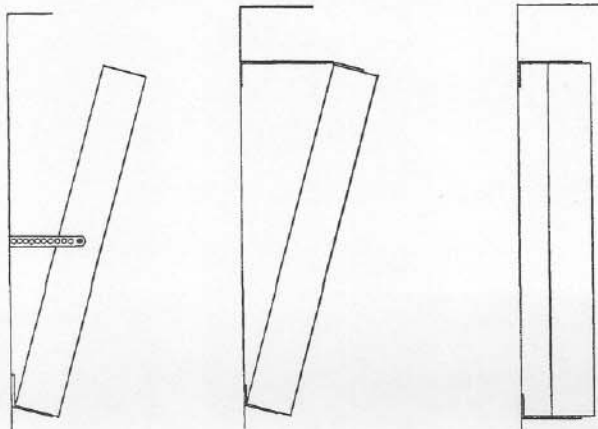
- Broad horizontal, closely controlled vertical distribution of projected sound
- Projected sound concentrated into audience area
- Small, lightweight, inconspicuous assembly
- Smooth, wide range reproduction

The Electro-Voice Model LR4S Line Radiator represents a new concept in controlled sound projection. This speaker, utilizing 12 four-inch cone speakers, has eliminated many of the problems of feedback, "spotty" coverage, and excessive size.

Since it is completely weatherproof, the LR4S is ideally suited for outdoor installations where it is necessary to cover a large audience with a minimum of speakers. It should be mounted above the microphone to eliminate difficult feedback problems and cover the audience uniformly with sound while retaining close control of the pattern of sound being projected.

INSTALLATION

The Model LR4S can be easily installed using the universal bracket supplied. Two strips of bracket material which can be easily cut and bent with ordinary hand tools to fit any mounting position, are included. Suggestions are given in the following drawings. The four 1/4"-20 machine bolts supplied, mate with weld nuts positioned at the top, bottom, and sides of the radiator making it possible to position a mounting bracket at any of these positions. The speaker may then be mounted on a wall, ledge, arch or ceiling, or suspended by a wire.



SPECIFICATIONS

Frequency Response:	200 to 10,000 cps
Sound Pressure Level:	112 db (at 4' with 25 watts input between 2 kc and 4 kc)
EIA Pressure Rating:	49 db
Power Handling Capacity:	
Program Material	25 watts
Peak	50 watts
Nominal Impedance:	8 ohms
Dispersion:	30° vertical 160° horizontal (line radiator mounted with long dimension vertical)
Mounting:	Universal bracket
Size:	52" x 7-1/2" x 4-5/8"
Weight:	
Net	24 lbs.
Shipping	26 lbs.

ARCHITECTS' AND ENGINEERS' SPECIFICATIONS

The loudspeaker shall be of the straight line radiator type, utilizing twelve 4-inch cone speakers. The speakers shall be enclosed in a metal cabinet painted a neutral tan. A metal grille shall be provided. The line radiator assembly shall include an integral electrical filter to reduce effective length of the radiator with an increase of frequency being reproduced. The assembly shall be weatherproof and capable of withstanding driving rain indefinitely without affecting quality of reproduction and articulation. The overall size shall be 52" x 7-1/2" x 4-5/8". Frequency response shall be uniform from 200 to 10,000 cps. Horizontal dispersion (with long axis of speaker vertical) shall be 160° and vertical dispersion shall be 30°. Sound pressure level at 4 feet on axis shall be 112 db when full rated power of 25 watts, from 2000 to 4000 cps with 1 cps sweep, is applied. Nominal impedance shall be 8 ohms. Weight shall be 14 lbs., and mounting hardware shall be supplied. Electro-Voice Model LR4S is specified.

MODEL LR4S LINE RADIATOR

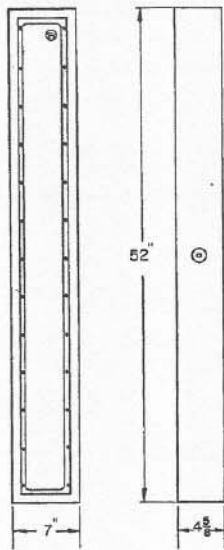


Fig. 1 — Dimensions

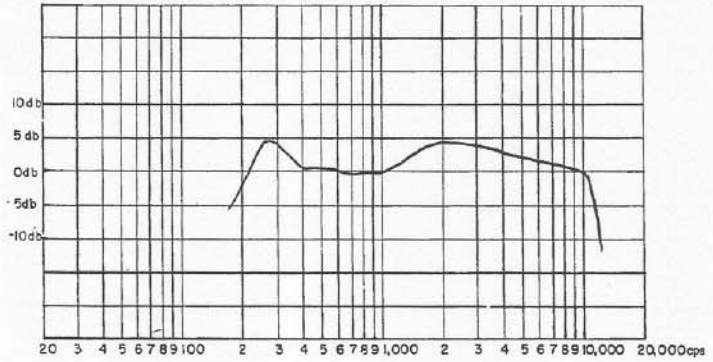


Fig. 2 — Frequency Response

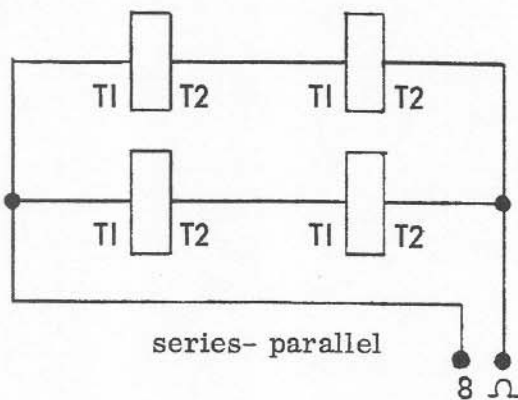
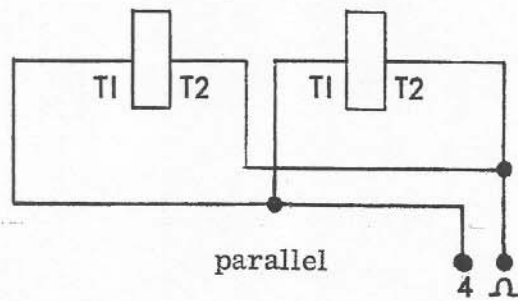
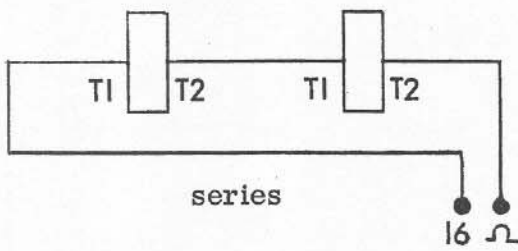
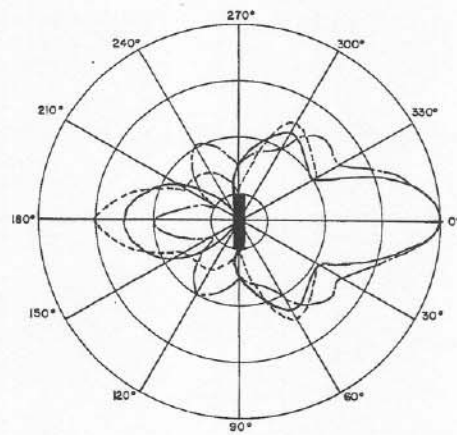
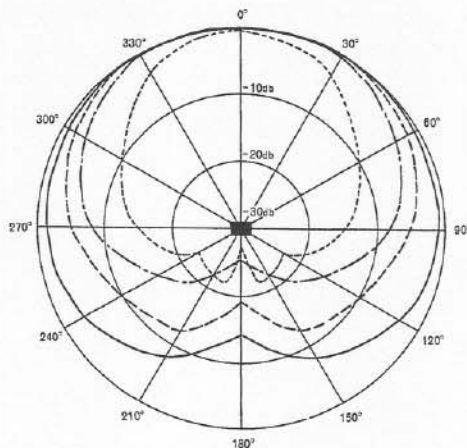


Fig. 3 — Wiring Diagrams



Vertical

500 cps —————
 1000 cps - - - - -
 3000 cps - · - · -
 5000 cps ······



Horizontal

Fig. 4 — Polar Pattern LR4S

Free Manuals Download Website

<http://myh66.com>

<http://usermanuals.us>

<http://www.somanuals.com>

<http://www.4manuals.cc>

<http://www.manual-lib.com>

<http://www.404manual.com>

<http://www.luxmanual.com>

<http://aubethermostatmanual.com>

Golf course search by state

<http://golfingnear.com>

Email search by domain

<http://emailbydomain.com>

Auto manuals search

<http://auto.somanuals.com>

TV manuals search

<http://tv.somanuals.com>