

ESCIENT[®]

FireBall[™]

FP-1 USER'S MANUAL



P/N: M51001-01A1



THANK YOU

The team at Escent would like to take this opportunity to thank you for purchasing an Escent FireBall product. Escent is committed to providing our customers the most technologically advanced, yet easier-than-ever to use products that converge the power of the Internet with home entertainment.

To maximize your enjoyment, please take a few minutes to review this User's Manual. It will guide you through all the features and benefits of your new FireBall.

If you should need assistance please call our Customer Support Staff at 800.372.4368

The Escent Team

PRODUCT INTRODUCTION	5
ABOUT THIS MANUAL	5
RECORD YOUR SERIAL NUMBER	5
MANUAL DISCLAIMERS	5
WARNINGS AND PRECAUTIONS	6
TRADEMARKS & SERVICE MARKS	7
WARRANTY INFORMATION	8
ESCENT PRIVACY POLICY	10
CONTACT INFORMATION	10
COPYRIGHT	10
TERMS AND DEFINITIONS	11
SETUP	12
POWER STATES	12
FRONT AND BACK PANEL OVERVIEW	13
REMOTE OVERVIEW	14
ENTERING TEXT WITH THE REMOTE CONTROL	15
<i>Entering Numeric Entry Mode</i>	15
<i>Typing Characters with the Remote</i>	15
AUDIO / VIDEO OUTPUTS	17
RS-232 CONNECTIONS	18
IR CONNECTIONS	18
ETHERNET CONNECTIONS	19
REGISTRATION	21
ETHERNET CONNECTION TEST	21
CONNECTING YOUR IPOD	22
ACCESSING MUSIC FROM YOUR PC OR MAC	22

ESCENT®

FireBall™ FP-1 User's Manual

LISTENING TO MUSIC	23	EDITING MUSIC INFORMATION	36
BROWSING YOUR MUSIC LIBRARY	23	<i>Editing Track Names</i>	37
SHOW AND HIDE TRACKS	23	<i>Searching for the Original Cover</i>	38
PLAYING THE CURRENT TITLE	24	<i>Tips for Searching for Covers</i>	38
SELECTING A DIFFERENT SONG	24	EDITING RADIO INFORMATION	39
CHANGING THE GUIDE VIEW	25	EDITING PLAYLISTS	40
<i>View By Artist</i>	25	DELETING PLAYLISTS	41
<i>View By Artist-Title</i>	25		
<i>View By List</i>	26	SETTING USER PREFERENCES	42
<i>View By Title-Artist</i>	26	RESYNC YOUR IPOD	42
<i>View By Song-Artist</i>	26	GET COVER ART	43
<i>View By Cover</i>	26	STATUS	44
<i>Using the Guide Views</i>	26	SELECTING YOUR LANGUAGE	45
CHANGING THE CURRENT PLAY MODE	27	SETTING THE SCREEN SAVER PREFERENCES	46
<i>Jukebox Play Modes</i>	27	<i>Activation Idle Time</i>	46
VIEWING BY GENRE	28	<i>Other Modes</i>	46
USING THE JUKEBOX QUEUE	29	<i>Retail Demo Mode</i>	47
<i>Adding Songs and Playing the Jukebox Queue</i>	29	SETTING YOUR TIME ZONE	48
<i>Reordering the Jukebox Queue</i>	30	CUSTOMIZABLE USER INTERFACE	49
<i>Removing a Song from the Jukebox Queue</i>	30	ENABLING PASSWORD PROTECTION	50
<i>Clearing the Entire Jukebox Queue</i>	30	ETHERNET SETTINGS	51
<i>Saving the Jukebox Queue</i>	30	SERVER SETTINGS	52
<i>Exiting Jukebox Mode</i>	30	FIREBALL MUSIC SHARING	53
		VIDEO FORMAT	54
LISTENING TO INTERNET RADIO	31	CENTERING THE FIREBALL SCREEN	55
BROWSING INTERNET RADIO STATIONS	31	ADJUSTING YOUR TV'S BRIGHTNESS	56
PLAYING THE CURRENT STATION	32	ADJUSTING YOUR TV'S CONTRAST	57
		ADJUSTING YOUR TV'S SHARPNESS	58
MANAGING YOUR MEDIA	33	ADJUSTING YOUR TV'S COLOR AND TINT	59
CREATING PLAYLISTS	33		
ADDING INTERNET RADIO STATIONS	34		
UPDATING THE INTERNET RADIO STATIONS LIST	35		

EXTERNAL CONTROL	60	TROUBLESHOOTING	75
IR REMOTE CONTROL	60	NETWORK PROBLEMS	75
DIRECT ACCESS CODES	61	SOFTWARE UPDATE PROBLEMS	75
BUTTON OVERLAY	64		
SERIAL COM PORT	65	ADDITIONAL INFORMATION	76
CONTROLLING FIREBALL FROM OTHER DEVICES	66	SPECIFICATIONS	76
		<i>Video Specifications</i>	76
FIREBALL UTILITIES	67	<i>Audio Specifications</i>	76
GETTING INFORMATION ABOUT YOUR FIREBALL	67	<i>Physical Specifications</i>	76
RESTARTING THE SYSTEM	68	<i>3rd Party Certifications</i>	76
UPDATING THE SOFTWARE	69	<i>FCC Part 15, Subpart B</i>	76
CONTROLLING FIREBALL FROM A		GRACENOTE® END-USER	
WEB BROWSER	70	LICENSE AGREEMENT	77
SETTING UP THE FIREBALL WEB SERVER	70		
USING THE WEB USER INTERFACE	70		
ID3 TAG SUPPORT	71		
NETWORKED AUDIO USING			
FIREBALL MUSIC CLIENTS	72		
SERVERS	72		
CLIENTS	72		
CONFIGURING A FIREBALL SERVER	73		
CONFIGURING A FIREBALL CLIENT	73		
<i>Networking</i>	73		
<i>Server Selection</i>	73		
ESCIENT TECHNICAL SUPPORT	74		

ESCIENT®

FireBall™ FP-1 User's Manual

PRODUCT INTRODUCTION

Thank you for purchasing a FireBall Media Management system from Escient (a division of D&M Holdings).

ABOUT THIS MANUAL

This FireBall User's Manual is intended to provide the reader with an overview of the main features and benefits of the Escient FireBall Media Management Systems. For more information, please refer to the Escient web site (www.escient.com) or contact your Escient dealer.

RECORD YOUR SERIAL NUMBER

The serial number for this unit is located at the rear of the device. Please record the serial number in the space provided below. Refer to it whenever you call Escient Tech Support (800.372.4368) regarding this product.

FireBall Serial Number:

MANUAL DISCLAIMERS

At the time of printing, the screen shot images in this manual matched the interface screens. However, since FireBall has the capability of downloading software updates and enhancements on a regular basis, the resulting screen updates may no longer match the images in this manual. Please check the Escient website for more information about software updates.

ESCIENT®

FireBall™ FP-1 User's Manual



CAUTION
Risk of Electric Shock
Do Not Open



AVIS: Risque De Choc Electrique - Ne Pas Ouvrir

WARNING: To reduce the risk of fire or electric shock do not expose this equipment to rain or moisture

WARNINGS AND PRECAUTIONS

- Do not use this apparatus near water.
- Clean only with a dry cloth.
- Do not block any ventilation openings.
- Do not install near any heat sources such as radiators, heat registers, stoves, or other apparatus (including amplifiers) that produce heat.
- To reduce the risk of electric shock, do not remove the cover. No user serviceable parts are inside. Refer servicing to qualified service personnel.
- To prevent electric shock, do not use a 3 wire to 2 wire adapter plug.
- A three prong grounded outlet is required.
- You are cautioned that any change or modification not expressly approved in this manual or approved in writing by an authorized representative of Escient could void your warranty and/or your authority to operate this equipment.
- Prolonged use of any video device which produces a static (non-moving, non-changing) or repetitive image on your projector, television or plasma display device can cause "screen burn-in". You are encouraged to leave the FireBall screen-saver turned on and set to the lowest possible "time-out" duration. Warning: This device uses the mains plug as the means to disconnect the unit, this unit remains powered unless disconnected from the mains source.

ESCIENT®

FireBall™ FP-1 User's Manual

The logo for Escient, featuring the word "ESCIENT" in a bold, sans-serif font with a registered trademark symbol, set against a stylized swoosh background.The logo for FireBall, featuring the word "FireBall" in a stylized, italicized font with a registered trademark symbol, followed by a graphic of a ball with motion lines.

TRADEMARKS & SERVICE MARKS

Escient®, the Escient logo, and FireBall® are trademarks of Digital Networks North America.

FireBall and Physital are trademarks of Escient®.

Other product names mentioned herein are used for identification purposes only and may be trademarks of their respective companies.

Music recognition technology and related data are provided by Gracenote®. Gracenote is the industry standard in music recognition technology and related content delivery. For more information visit www.gracenote.com.

CD and music-related data from Gracenote, Inc., copyright © 2000-2006 Gracenote.

Gracenote CDDDB® Client Software, copyright 2000-2006 Gracenote. This product and service may practice one or more of the following U.S. Patents: #5,987,525; #6,061,680; #6,154,773, #6,161,132, #6,230,192, #6,230,207, #6,240,459, #6,330,593, and other patents issued or pending.

Gracenote and CDDDB are registered trademarks of Gracenote. The Gracenote logo and logotype, and the "Powered by Gracenote" logo are trademarks of Gracenote.

iPod is a trademark of Apple Computer, Inc., registered in the U.S. and other countries. Includes iPod Universal Dock. Compatible with any iPod with dock connector.

A vertical banner on the right side of the page. It features the word "ESCIENT" in large, white, bold, sans-serif letters on a dark grey background. Below it, in smaller white text, is "FireBall™ FP-1 User's Manual". A small registered trademark symbol is visible at the top right of the banner.

WARRANTY INFORMATION

Terms of Coverage - Each Escient branded media management system sold comes with a standard one (1) year warranty. This warranty provides no-charge coverage under normal product usage, for a period of one year from the date of registration and/or purchase (whichever is earlier). This warranty program provides the following key features and benefits:

- Twelve (12) months service, parts and labor.
- Five (5) day turn around time on all standard in-warranty repairs. No charges to the customer other than in-bound shipping charges which are determined by the shipping method. All return shipments will be via Standard Ground Transportation (approximately 5 business days).
- Twelve (12) months of regular hour telephone support (9AM to 7PM EST), Monday through Friday.
- 24-hour email response from the Escient Support Website.
- Software maintenance updates provided via a broadband or dial-up Internet connections.
- Access to 24-hour music and movie databases and entertainment services providing access to thousands of CD and DVD titles and associated information.

What is Covered - The goal of this warranty is to cover operational problems that might arise with your product during normal use. This includes failure to start, improper operation, or intermittent failures. As part of the warranty, Escient will pay for all labor and materials used in the repair of the system. Escient reserves the right to use new or factory refurbished parts in the repair of these in-warranty systems. Escient will also pay for the return shipment of the repaired system via standard ground transportation. At Escient's discretion, the Company will repair or replace any system sent in for repair. Upon repair, the product will be new or like-new in condition and will meet all necessary regulatory requirements.

What is Not Covered - Escient products are sold through Escient approved dealers. A number of items must remain intact in order for Escient to verify and validate this warranty. Additionally, there are several conditions which violate Escient's warranty program. These include:

- The product was not purchased through an approved Escient Dealer.
- Any product, on which the serial numbers has been defaced, modified or removed physically or electronically will not be covered by an Escient warranty.
- Escient will not cover under warranty damage to the product as a result of accident, misuse, abuse, neglect, fire, water, lightning, or other acts of God or nature, improper storage, unauthorized modification, or failure to follow instructions.
- Any type of unauthorized repair or modifications made to the system resulting in damage to the product will not be covered under this warranty.
- Damage caused to the product as a result of improper shipping or installation.
- Any problems related to the use of the product which is not a direct problem with the product.
- Damage caused to the product as a result of improper installation to third party peripherals or products, or incorrect connection to peripheral or products.

- Additionally, Escient does not cover the following items under the terms of its warranty programs:
- Installation or removal charges.
- Cost of initial technical adjustments (setup costs).
- Battery replacement.

Escient's sole liability for any defective product is limited to the repair or replacement of the product at our discretion. Escient shall not be liable for damages to other property caused by defects in this product, damages based upon inconvenience, loss of use of the product, loss of time or data, commercial loss or any other damages, whether real, incidental or consequential.

Escient shall not be liable for damage or loss of data including but not limited to music recorded to storage devices. It is the customer's responsibility to maintain the original media and/or appropriate backup copies within the specific rights of the media's copyright holder.

How to Return a Product - Contact your dealer or Escient's Customer Support group at 800-372-4368.

Please have the following information ready for your dealer or Escient's Customer Support technician:

- Product Serial Number
- Model Number
- Date of Registration or Purchase
- Place of Purchase

Upon reviewing the request for repair under warranty provisions, Escient's Technical Support group will issue a Return Material Authorization (RMA) number. This number is to be attached to the outside of the shipping carton. Additional instructions will be provided by technical support. Please be sure to use original packing carton and internal packing materials to assure proper shipment of the system. Insurance costs are the responsibility of the customer. Most shippers only provide standard coverage for \$100 in cost so please protect yourself by providing additional insurance for the returned product.

Out of Warranty Repair - Escient provides out of warranty repair service on a cost plus labor basis. Minimum charges will apply. Technical support will provide information on this service at the time of the call.

ESCIENT®

FireBall™ FP-1 User's Manual

ESCIENT PRIVACY POLICY

Escient is committed to providing you with a product that you enjoy and are confident in using, and are committed to providing services in a private and secure environment.

We recognize and respect each individual user's privacy and have created this Privacy Policy to demonstrate our commitment to your privacy.

We want you to be fully informed about the information that we collect, why we collect it, and with whom we share it.

It is our hope that, after reading this notice, you will understand our commitment to privacy and be confident that we will use your information responsibly. By using the Escient FireBall, you are accepting the practices described in this Privacy Policy.

The option to read the Escient Privacy Policy appears on the zip code screen of the Quick Start automatic setup procedure. In addition, you can access the statement at any time by pressing the **SETUP** key and choosing the **GENERAL** menu, and then selecting the **PRIVACY POLICY** option..

CONTACT INFORMATION

Escient may be contacted by using the following information. Once you have worked with your local Escient dealer, we encourage you to contact us if you are in need of any further assistance.

Escient

6640 Intech Blvd. Suite 250

Indianapolis, Indiana 46278

Phone: 800-372-4368 Press "2" for Sales, or "3" for Support

Fax: 317-616-6790

Internet: www.escient.com

Email: support@escient.com

Hours: Monday - Friday 9:00am - 7pm EST

COPYRIGHT

This manual is copyright ©2006 by D&M Holdings and Escient. All rights reserved.

ESCIENT®

FireBall™ FP-1 User's Manual

TERMS AND DEFINITIONS

Following are terms used throughout this manual:

- **Button** - refers to a graphic item on the display screen.
- **Group** - a collection of similar music titles. Standard genre groups are provided and custom groups can be created by the user.
- **Highlight** - highlighting is used to indicate the user's selection on screen. When the selection moves up, down, left, or right, the highlight moves to the next nearest item. No action is taken (except that more information may be displayed on the screen) until the Select key is pressed.
- **Info Text Area** - the portion of the guide screen used to display information about the highlighted title.
- **Playlist** - a collection of one or more music tracks or songs.
- **Title** - a collection of music tracks commonly referred to as a CD, Album or Playlist.
- **Key** - refers to one of the buttons on your remote or keyboard.
- **MP3** - a compressed digital audio format. MP3 files are smaller than the original CD tracks and sound almost identical.
- **FLAC** - a lossless compressed digital audio format. FLAC files are smaller than the original CD tracks and are bit for bit duplicates of the original.
- **WMA** - a digital audio format from Microsoft which stands for Windows Media Audio.
- **AAC** - is a digital audio format similar to MP3 which stands for Advanced Audio Coding
- **Guide** - a grid or list of information, used to browse your media library.
- **Player** - the screen used to display the currently playing media.

SETUP

This manual assumes that you followed the printed “Quick Setup Guide” that came with your FireBall. If you have not properly connected your FireBall to your audio/video system, please go back and follow the “Quick Setup Guide” guide before continuing with this User Manual.

POWER STATES

After the FireBall unit is plugged in, the Standby LED located next to the power button will flash red until the startup process is complete.

Please wait. This may take several minutes.

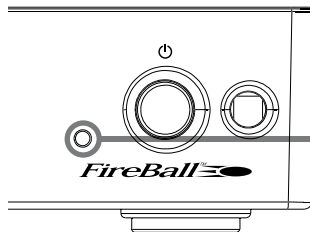
When the Standby LED is solid RED, the FireBall is now in a standby or “sleep” mode. There is no video output when FireBall is in standby mode. Press the Power button (on the front panel or on the remote) once and the video output is displayed on your TV. The unit is now ON and the LED will be solid GREEN.

To change from the ON mode back to the standby or “sleep” mode, press the Power button on the front panel or on the remote once. The video output will go blank and the LED will be solid red.

If power is removed from FireBall for any reason, including a power outage or if the unit is unplugged, FireBall will automatically return to the Standby state as soon as power is restored. When FireBall is turned on again, FireBall will return to the same source mode that it was in when power was lost.

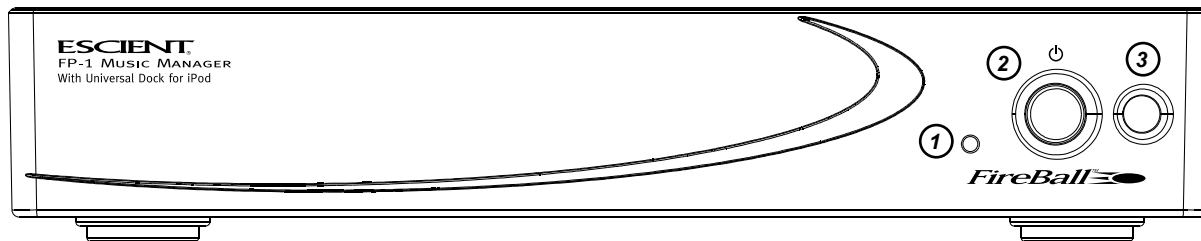
To force the FireBall to restart, PRESS and HOLD the Power button on the front of the unit for 4 seconds, and release it when the standby LED starts blinking.

When the Standby LED is RED and FireBall has completed its startup process, press the Power button once to turn on the FireBall.

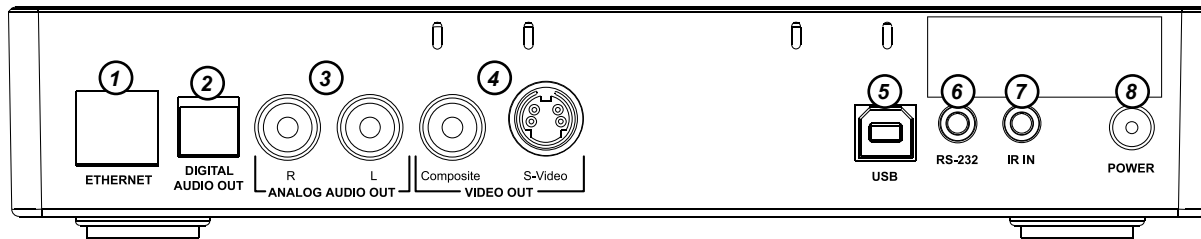


flashing red = starting up
solid red = standby
solid green = on

FRONT AND BACK PANEL OVERVIEW



- 1 - LED - POWER STATES
- 2 - POWER ON/OFF
- 3 - IR WINDOW

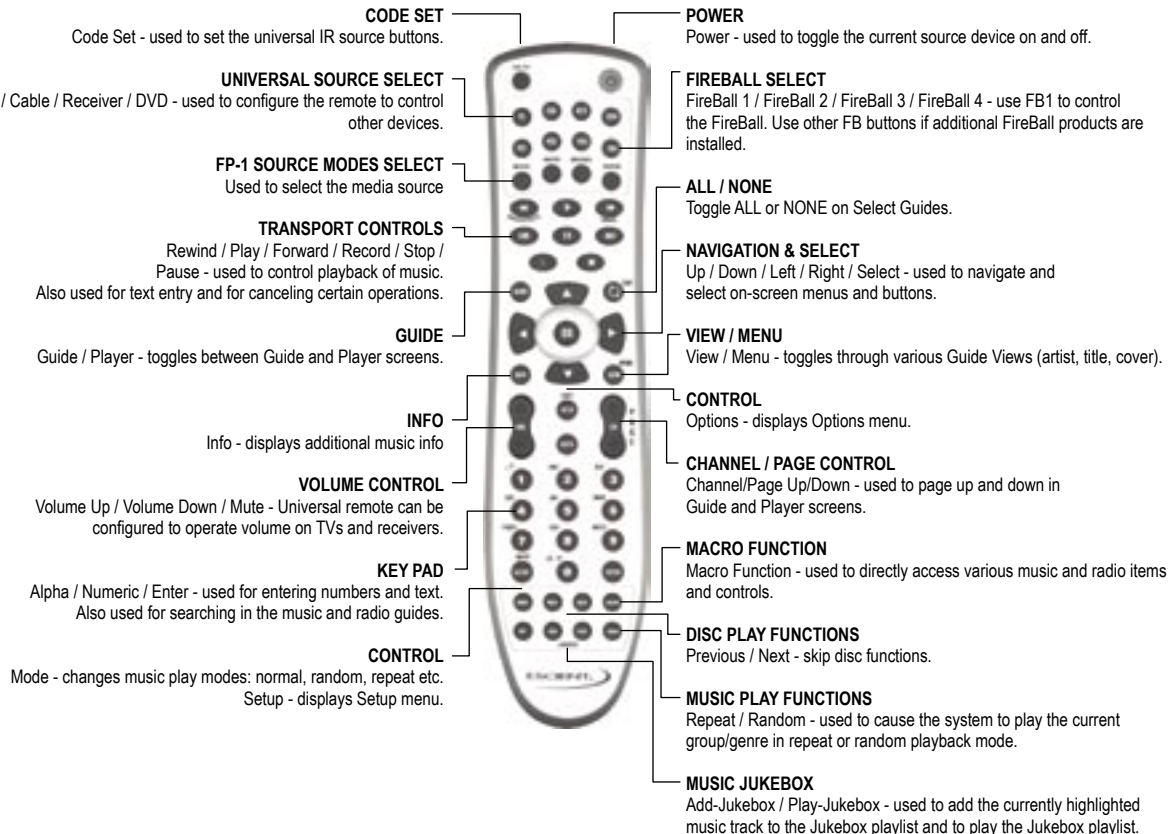


- 1 - ETHERNET
- 2 - DIGITAL AUDIO OPTICAL OUT
- 3 - ANALOG AUDIO OUT RIGHT / LEFT
- 4 - VIDEO OUT: COMPOSITE / S-VIDEO
- 5 - USB
- 6 - RS-232
- 7 - IR
- 8 - POWER

ESSENT[®]

FireBall™ FP-1 User's Manual

REMOTE OVERVIEW





ENTERING TEXT WITH THE REMOTE CONTROL

The remote control can be used to enter text in all text fields. This text entry capability is provided to allow you to fill out short text fields – such as those that occur in the setup and edit screens. FireBall's wireless keyboard should be used when extended typing is required.

Entering Numeric Entry Mode

In fields where FireBall expects only numeric characters to be entered (such as phone number fields), an indicator will appear on the screen that displays the letters “123” indicating that only numbers can be entered.

Typing Characters with the Remote

The remote control based text entry capability is similar to that provided on standard telephones and cell phones. Each numeric key has characters associated with it that can be accessed by pressing the key one or more times. You have .5 seconds after a key is pressed to enter a second character from the same key. If you press the same key within .5 seconds, the second character associated with that key replaces the initial character. If you do not press the same key within .5 seconds, the text cursor moves to the next location so that the same key can be pressed again to enter a second character.

The “2”, “3”, “4”, “5”, “6”, and “8” keys each support three letters and one number and can be pressed from one to seven times to display upper case, lower case, and numeric characters. The “7” and “9” keys both support four letters and one number and can be pressed from one to nine times. The “1” and “0” keys support all of the special characters and will cycle through each character for every key press.

The text characters follow the same convention used by a standard telephone – except in the case of the “1” and “0” keys which contain additional characters.

When entering characters at the beginning of a field or characters that follow a space, FireBall assumes that upper case characters are preferred. Therefore, characters are entered in the following cycle – uppercase, lowercase, and numeric. For example, the first key press enters an uppercase letter corresponding to the first letter associated with the key. Pressing the “2” key once displays an “A” in the text field, pressing the “2” key twice displays a “B”, pressing it again will

display a “C”. The fourth key press displays a lower case “a”, the fifth key press displays a lower case “b”, and the sixth key press displays a lower case “c”. Lastly, pressing the “2” key a seventh time displays the number “2”.

When entering the second character in a text field or the second character following a space, FireBall assumes that lower case is preferred and the character entry cycles in the following pattern – lowercase, uppercase, and numeric.

The following text entry table describes the sequence of characters that appear when specific keys are pressed on the remote:

Key	Alpha Mode 1 st character or 1 st character after a space	Alpha Mode 2 nd character or 2 nd character after a space
1	1. / , ? ' : ; & ~ !	1. / , ? ' : ; & ~ !
2	ABCabc2	abcABC2
3	DEFdef3	defDEF3
4	GHIghi4	ghiGHI4
5	JKLjkl5	jklJKL5
6	MNOmno6	mnoMNO6
7	PQRSpqrs7	pqrsPQRS7
8	TUVtuv8	tuvTUV8
9	WXYZwxyz9	wxyzWXYZ9
0	0@ _ - * # [] () +=	0@ _ - * # [] () +=

AUDIO / VIDEO OUTPUTS

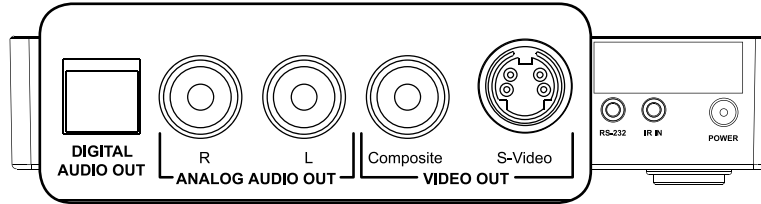
FireBall has two audio and video output formats and connectors including:

AUDIO

- Analog Audio
- Digital Optical Audio

Video

- Component Video
- S-Video



All audio and video outputs are active at the same time, so you can use as many as you like without causing signal degradation.

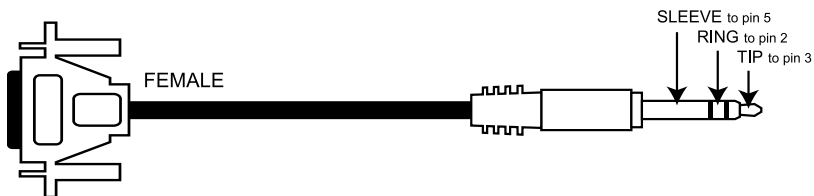
The Digital Optical output will provide the best possible sound quality for the FireBall, but will require that your audio system has an available Digital Optical input. The Analog Audio output is typically for other systems without Digital inputs.

The S-Video output will provide the best possible video quality for the FireBall User Interface, but will require that your video system has an available S-Video input. The composite output is typically used for an a/v distribution system, such as the Xantech AV-61 or the Niles ZR-4630/8630 distribution systems.

RS-232 CONNECTIONS

The COM port is to be used for connecting a wired touch panel or to interface with a third party control system such as AMX or Crestron.

Pin outs for the RS-232 input



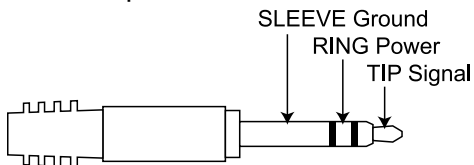
Note: You should use the Ethernet control system for controlling FireBall from a third party control system whenever possible. Using the Ethernet control system frees up the last COM port for other purposes, allows much longer distances between FireBall and the control system, and provides a much faster path for data transfer.

IR CONNECTIONS

The direct IR input jack on the back panel of the FireBall is for controlling FireBall from a wired IR distribution system such as a Xantech system. This connection must be an IR signal with a 36kHz carrier using an 1/8" mono or stereo connector.

The IR input jack provides 12V power. This means that you can directly connect a 12V IR receiver (like the Xantech series 291 units) to the FireBall using a 1/8" stereo connector. A mono 1/8" direct IR input can be safely used as FireBall will automatically detect the different cable and ground the voltage to protect your IR system from damage.

Pin outs for the Wired IR input



ETHERNET CONNECTIONS

The Ethernet jack on the back panel of the FireBall accepts any standard twisted pair CAT5 Ethernet cable. If you are connecting FireBall to a home network, you typically connect a standard Ethernet cable from your Ethernet router or hub to the FireBall.

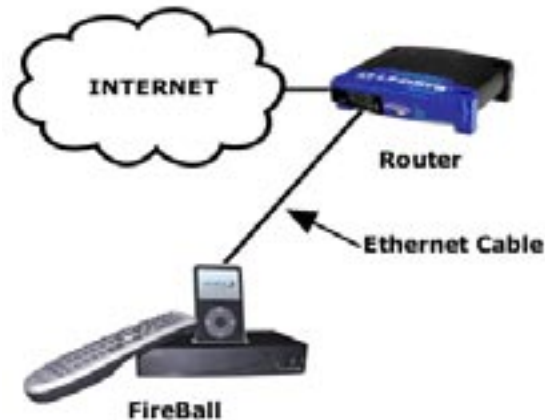
There are different grades, or categories, of twisted-pair cabling. Category 5 is the most reliable and widely compatible, and is highly recommended. It runs easily with 10Mbps networks, and is required for 100Mbps networks. You can buy Category 5 cabling that is pre-made, or you can cut & crimp your own.

Category 5 cables can be purchased or crimped as either straight-through or crossed. A Category 5 cable has 8 thin, color-coded wires inside that run from one end of the cable to the other. Only wires 1, 2, 3, and 6 are used by Ethernet networks for communication. Although only four wires are used, if the cable has 8 wires, all the wires have to be connected in both jacks.

Straight-through cables are used for connecting computers to a hub. Crossed cables are used for connecting a hub to another hub (there is an exception: some hubs have a built-in uplink port that is crossed internally, which allows you to uplink hubs together with a straight cable instead).

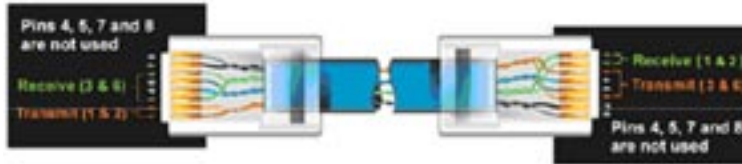
In a straight-through cable, wires 1, 2, 3, and 6 at one end of the cable are also wires 1, 2, 3, and 6 at the other end. In a crossed cable, the order of the wires change from one end to the other: wire 1 becomes 3, and 2 becomes 6.

To figure out which wire is wire number 1, hold the cable so that the end of the plastic RJ-45 tip (the part that goes into a wall jack first) is facing away from you. Flip the clip so that the copper side faces up (the springy clip will now be parallel to the floor). When looking down on the coppers, wire 1 will be on the far left.

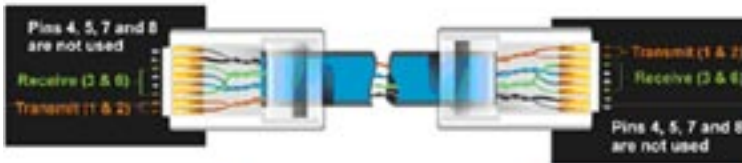


CAT5 cabling should not exceed 100 meters. The following drawing depicts the typical wiring scheme for CAT5.

For more information about wiring an Ethernet network, please refer to the Linksys web site (www.linksys.com).



Pin number	Wire Color	Crossed-Over		Pin number	Wire Color
Pin 1	Orange/White	Wire	Becomes	Pin 1	Green/White
Pin 2	Orange	1	→ 3	Pin 2	Green
Pin 3	Green/White	2	→ 6	Pin 3	Orange/White
Pin 4	Blue	3	→ 1	Pin 4	Blue
Pin 5	Blue/White	6	→ 2	Pin 5	Blue/White
Pin 6	Green			Pin 6	Orange
Pin 7	Brown/White			Pin 7	Brown/White
Pin 8	Brown			Pin 8	Brown



Pin number	Wire Color	Straight-Through		Pin number	Wire Color
Pin 1	Orange/White	Wire	Becomes	Pin 1	Orange/White
Pin 2	Orange	1	→ 1	Pin 2	Orange
Pin 3	Green/White	2	→ 2	Pin 3	Green/White
Pin 4	Blue	3	→ 3	Pin 4	Blue
Pin 5	Blue/White	6	→ 6	Pin 5	Blue/White
Pin 6	Green			Pin 6	Green
Pin 7	Brown/White			Pin 7	Brown/White
Pin 8	Brown			Pin 8	Brown



REGISTRATION

Registering your FireBall is accomplished automatically when you go through the Quick Start process described in the User's Manual. Registration includes properly configuring your FireBall for Internet access and then connecting to the Escient servers to register your serial number and download the latest Internet Radio stations.

If you have trouble completing the automatic registration process, check your connections, access to your Internet service, or select MANUAL to manually configure your network settings. During this process you may use the Ethernet Connection Test to help troubleshoot your network.



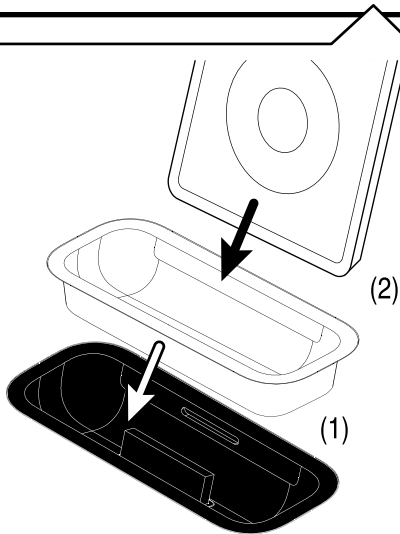
ETHERNET CONNECTION TEST

1. Check the Ethernet Network Link - The green LED next to the FireBall's back panel Ethernet jack should be on when properly connected to an Ethernet network.
2. From the Ethernet Connection Quick Start screen, select the "perform test" button. This will start the Ethernet Connection test which will test the following network settings:
 - a. The ethernet link to your router or hub.
 - b. The DHCP addressing if you selected Dynamic IP Addressing.
 - c. The connection to your default Gateway (your route to the Internet).
 - d. The connection between your router and the Escient server. If any of these tests fail, check your ethernet wiring with the proper test equipment, make sure your router is properly configured as a DHCP router, and that you can access the internet using the same network connection using a PC.



Note: Check with your ISP or network administrator if you need assistance determining whether or not you should use DHCP IP addressing. If you are going to use a static IP address, it must be in the proper range assigned to your subnet. Again, check with your ISP or network administrator before using a static IP address.



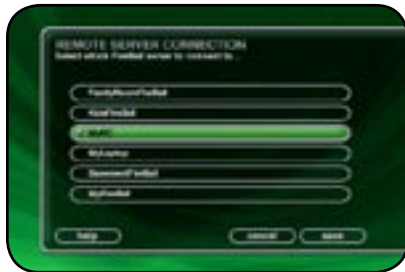


CONNECTING YOUR IPOD

Follow these steps to connect your iPod to the FP-1:

1. Insert the appropriate universal iPod adapter into the iPod docking well on the top of the FP-1
2. Insert your iPod into the dock.
3. The FP-1 will begin to load your iPod's Music and lookup the cover art using your Internet connection.

Note: Please be patient as the initial lookup may take several minutes, depending on the amount of content loaded on your iPod. The FP-1 will remember this data so future docking will not take as long.



ACCESSING MUSIC FROM YOUR PC OR MAC

Accessing music files from a FireBall-PC is the same as accessing music files from another networked FireBall. Follow these steps to connect your FireBall Media Server to a FireBall-PC enabled computer.

1. From your FireBall, select Setup/Network/Remote Server Connection.
2. You should see the name of your FireBall-PC server in the list of server names.
3. Select the FireBall-PC server name and select SAVE.

FireBall's Music Guide will now contain access to both the local and FireBall-PC media in one integrated guide. You can now Browse, Select, and Play any music file regardless of where it's physically located.

LISTENING TO MUSIC

BROWSING YOUR MUSIC LIBRARY

Now that you have gotten your music into your FireBall, it's time to enjoy it! The **Music Guide** allows you to browse, locate, and play all of your music in one easy to use on-screen guide. Press the **MUSIC** key on the remote control to access your music collection.

The **Music Guide** displays a scrolling list of all your Music Titles. Using the remote control, you can navigate up and down the list. As each Title is highlighted, you will notice that the Information Area and Cover Art changes to reflect the currently highlighted Title.

SHOW AND HIDE TRACKS

If you press the **SELECT** key on the remote control, you will expand the current Title to reveal a list of the Title's **TRACKS**.

Press the **SELECT** key again (when a Title is highlighted) to collapse the current Title and hide the track names.



PLAYING THE CURRENT TITLE

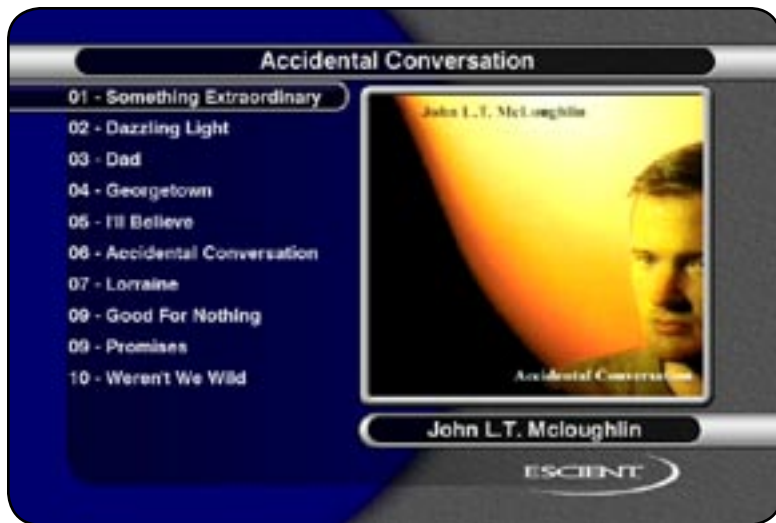
Playing the currently highlighted Title is the same as playing a CD in a conventional CD player. Simply press the **PLAY** key on the remote control and it begins to play from track 1.

*Note: If you press **SELECT** with a Track highlighted, you will start playback from the selected Track.*

You'll notice that a new screen appears with a list of the songs (or tracks) on the current Title, this is the **Music Player** screen. The Music Player displays the artist name, album name, album cover art, and track list for the current Title.

SELECTING A DIFFERENT SONG

In the **Music Player** you can navigate up and down the track list using the remote control. Highlight a different song and press **SELECT** to play the song.





CHANGING THE GUIDE VIEW

The **GUIDE** button on the remote control is used to switch between the Music Guide and Music Player screens. When you are viewing the **Music Player** screen, press the **GUIDE** button to return to the **Music Guide**.

The **Music Guide** provides you with several ways to view the contents of your Music Library. One of the easiest ways to browse and sort your Music Library is by using the Music “**Views**”. There are four Views that you can switch between using the “**MENU/VIEW**” key on the remote control:

- Artist
- Artist - Title
- Title - Artist
- Song
- List
- Cover

View By Artist

View By Artist is the default View and displays your Music Library alphabetically from A to Z using according to the Artist Name. Expanding the Artist Name displays the albums by that artist. Further expanding the albums, displays the songs within each album.

View By Artist-Title

View By Artist-Title displays your Music Library alphabetically from A to Z using according to the Artist Name then the Album Name.





View By List

View By List displays a nine line hierarchical view of your music library starting by Genre, then by Artist, Album, and finally by songs.



View By Title-Artist

View By Title will order the list of Titles alphabetically from A to Z, according to the Album Name then the Artist Name.



View By Song-Artist

View By Song will order the list of Titles alphabetically from A to Z, according to the Song Name.



View By Cover

View By Cover displays a graphical grid of album cover art, sorted alphabetically from A to Z, according to the Artist Name then Album Name.

Using the Guide Views

You can select which Music Guide Views to cycle through when pressing the VIEW button on the remote. This allows you to use all of the views or just the ones that you find most useful for browsing your music library.

Select Music Options, then Guide Views to display the Guide Views options screen. Highlight then select/unselect each view that you want to include in the cycle.





CHANGING THE CURRENT PLAY MODE

The default Play Mode will play the current Title from Track 1 to the last track in order, then stop. If you want to change the order of how tracks are played, there are six different Play Modes to choose from:

- **Normal** - play each track in order in the current Title, then stop.
- **Repeat Track** - repeat the same track over and over until you press stop.
- **Repeat Title** - play each track in the current Title in order then repeat the entire disc until you press stop.
- **Repeat Group** - play each track in each title in the current group and then repeat them until you press stop.
- **Random Title** - randomly select and play a track from within the current title. Continue until you press stop or every track in the current title is played.
- **Random Group** - randomly select and play a track from any title in the current group. Continue until you press stop or every track in the current group is played

To change the current Play Mode, press the **MODE** key on the remote control. Each press of the **MODE** key will switch to the next Play Mode. Stop pressing the **MODE** key when you see the desired Play Mode appear on the screen. You can also directly select a Play Mode using the **OPTIONS** key and the Play Mode menu item.

Jukebox Play Modes

If Jukebox mode is enabled, the available Play Modes will be:

- **Normal** - play the jukebox queue in order, then stop
- **Repeat** - play the jukebox queue in order, over and over without stopping
- **Random** - randomly select and play a track from the jukebox queue until you press stop or every track in the queue has been played.

VIEWING BY GENRE

In addition to the current Guide View, the Music Guide automatically organizes your Music into default “Genres” also called “Groups”. The Group Bar displays a horizontal scrolling list of Genres corresponding to the music in your library. Five Genres or Groups are visible at one time. The “All” genre is the default, which displays all Titles in your Music Library.

Using the **LEFT** and **RIGHT** arrow keys on the remote, you can select a different Genre. Notice that the list of Titles updates to show only Titles in the selected Genre.

- Scroll all the way to the left to return to the All Genre.
- Genre list will scroll to the right to reveal more Genres.
- Refer to the section “Managing Your Media” for instructions on creating your own groups from favorite music titles





USING THE JUKEBOX QUEUE

By default, FireBall plays music from a “playlist” or “disc” based song list, meaning that you select an Artist-Title, Title, or Cover and it plays the entire Album you selected (according to the current Play Mode). If you select something else, what is currently playing is stopped and the newly selected music starts to play.

Alternatively, the Jukebox Mode allows you to create a list of songs (or a song queue if you will) to play while you are listening to something else, similar to the way you would use a traditional coin operated jukebox.

Adding Songs and Playing the Jukebox Queue

Follow these steps to select and play music using the Jukebox Mode:

1. Press the **MUSIC** key on the remote to make sure you are in the Music Source Mode.
2. Locate and highlight any Genre, Artist, Album, or Song in the Music Guide that you want to play in Jukebox mode.
3. Press the **ADD JUKEBOX** key on the remote control to add the highlighted item to your Jukebox Queue.
4. Press the **PLAY JUKEBOX** key on the remote control to display the Music Player screen and play your Jukebox Queue.
5. If you want to add more music to your Jukebox Queue, press the **GUIDE** key on the remote to return to the Music Guide and use the **ADD JUKEBOX** key to add more music. You will notice that music you Add doesn't play right away as it is added to the end of the Jukebox Queue.

*Note: Some FireBall products will have **ADD FAVORITES** and **PLAY FAVORITES** keys on the remote control instead of Jukebox keys. Use these keys to add and play your Jukebox Queue.*

The Jukebox Queue has a limit of 500 songs so FireBall will automatically balance and adjust the contents of the queue as you select items into it. For example, if your Jukebox Queue already has 500 items, you can still use the **ADD JUKEBOX** key to add another artist (which may contain several albums and dozens of songs) to the queue. FireBall will add tracks from the selected artist into the queue while automatically removing other tracks to make room for the new ones.

Reordering the Jukebox Queue

Follow these steps to reorder tracks in the Jukebox Queue:

1. Make sure you are viewing the Music Player screen or press the GUIDE button to hide the Guide and display the Player screen.
2. Highlight the track you want to move.
3. Press the LEFT arrow key on the remote to move the highlighted track up in the Jukebox Queue or press the RIGHT arrow key to move it down.

Removing a Song from the Jukebox Queue

Follow these steps to remove one song at a time in the Jukebox Queue:

1. Make sure you are viewing the Music Player screen or press the GUIDE button to hide the Guide and display the Player screen.
2. Highlight the track you want to remove.
3. Press the TOGGLE key (the one with the double spinning arrows on it) to remove the highlighted track from the Jukebox Queue.

Clearing the Entire Jukebox Queue

Follow these steps to remove all songs from the Jukebox Queue:

1. Press the MUSIC key on the remote to make sure you are in the Music Source Mode.
2. Select the Jukebox Menu Item.
3. Select the Clear Queue button. All songs are cleared from the Jukebox Queue.

Saving the Jukebox Queue

Follow these steps to save the Jukebox Queue as a Playlist:

1. Press the MUSIC key on the remote to make sure you are in the Music Source Mode.
2. Select the Jukebox Menu Item.
3. Select the Save as Playlist button.
4. Follow the same steps for creating and saving a New Playlist.

A new playlist is created on your FireBall and your Jukebox Queue is left intact. This is a way to periodically save the Jukebox Queue for later listening.

Exiting Jukebox Mode

Follow these steps to exit the Jukebox Mode and return to play mode.

1. Press the OPTIONS key to display the Music Options Menu.
2. Select the Jukebox Menu Item.
3. Highlight and uncheck the Jukebox Mode checkbox.
4. Select the SAVE button to save your selection. FireBall will now play in title/album mode once again.

Note: You can also exit Jukebox Mode, by highlighting anything in the Music Guide and pressing the PLAY key on the remote (instead of PLAY JUKEBOX).

ESSENTIAL [®]

FireBall™ FP-1 User's Manual

LISTENING TO INTERNET RADIO

BROWSING INTERNET RADIO STATIONS

The **Radio Guide** displays a scrolling list of Internet Radio Stations. Using the remote control, you can navigate up and down the list. As each Station is highlighted, you will notice that the Information Area and Cover Art changes to reflect the currently highlighted Station.

- Press the **iRADIO** key on the remote control to display the Radio Guide.
- Press the **MUSIC** key to return to the Music Guide



PLAYING THE CURRENT STATION

Playing the currently highlighted Radio Station is the same as selecting and playing an off air radio station on a typical audio receiver. Simply **press the SELECT** key on the remote control and the currently highlighted station will be located, buffered, and then played.

You'll notice that a new screen appears displaying information about the selected station. This is the **Radio Player** screen. The Radio Player displays the station name, location, genre, genre cover art, and status about the current Internet Radio station stream.

- Playing Internet Radio requires a valid Internet connection.
- Although some stations will work over a Dialup Internet Connection, a broadband Internet connection is recommended.
- Due to the dynamic nature of the Internet, you may experience periodic audio drop-outs which could be due to many factors such as Internet access problems, busy networks, etc...
- Internet Radio Stations are not hosted by Escient and may not be available at all times. You can update your Internet Radio Stations list by running Tune Stations. Please refer to the "Managing Your Media" section for more information.
- Cover art, song name, and artist name are displayed only if the information is sent by the Internet Radio Station broadcaster.



ESCIENT®

FireBall™ FP-1 User's Manual



MANAGING YOUR MEDIA

CREATING PLAYLISTS

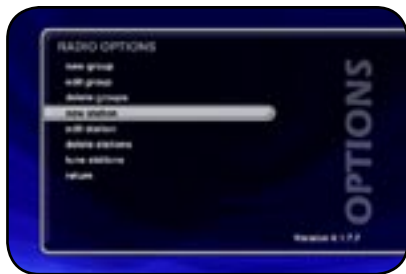
FireBall allows you to organize your favorite songs into custom “Playlists”. A Playlist is simply a group of songs that you choose from your Music Library. Common uses for Playlists are:

- Collections of your favorite songs
- Songs that have a similar tempo or feel (mellow mix)
- Custom albums from one or more of your favorite artists
- Party mixes
- Workout mixes

Follow these steps to create your own custom Playlist:

1. Press the **MUSIC** key to make sure you are in the Music source mode.
2. Press the **OPTIONS** key to display the Music Options Menu
3. Select the **PLAYLIST/NEW PLAYLIST** menu item.
4. Using the remote control or keyboard, enter a name for your Playlist.
5. Select the **CONTINUE** button on screen to advance to the Edit Playlist Select Guide.
The Edit Playlist Select Guide works just like the Music Guide. Navigate up and down to highlight, expand, or collapse music titles.
6. For each song you want to add to the Playlist, highlight the song name and press the **SELECT** key on the remote. A checkmark appears to the right of each selected song indicating that it will be added to the Playlist. Press **SELECT** again to remove the checkmark.
7. When you have selected all of the songs you want to include in the playlist, press the **RECORD** button on the remote control to save the Playlist.

- When you are finished creating your Playlist, the Music Guide is displayed highlighting the newly created Playlist.
- You can play any Playlist the same way you play a music title or CD. Just press the **PLAY** key on the remote control.
- Notice that a Playlist genre is added to the Group Bar. The Playlist genre will always be available as long as you have at least one playlist in your Music Library.
- “This Playlist” in the Group Bar displays which songs are in the current Playlist.
- To Reorder Tracks in “This Playlist” use the **REW** and **FF** keys to move the highlighted song up or down in the Playlist.



ADDING INTERNET RADIO STATIONS

FireBall comes preloaded with several high quality streaming Internet Radio Stations from around the world, but that may not be enough for you, so FireBall also lets you add your own Internet Radio Stations.

Internet Radio stations must conform to these specifications:

- Windows Media WMA or MPEG II layer 3 streams.
- Windows Media 9 or earlier.

To add your own Internet Radio Stations, you will need to obtain the URL or Internet Link to the stream using your PC.

Assuming you have a valid URL for a station, follow these steps to add your own Internet Radio Station to the Radio Guide:

1. Make sure you are in the Radio source mode by pressing the RADIO key on the remote.
 2. Press the OPTIONS key to display the Options Menu
 3. Select the NEW STATION menu item.
 4. Using the remote or keyboard, enter information for the new station including: station name, location, URL, the bit rate of the stream, the genre, the stream type (MP3 or WMA), and the number of channels (mono or stereo). The default cover art will be set according to which genre you select.
 5. Select the SAVE button to save the new station.
- When you are finished creating your new station, the Radio Guide is displayed highlighting the newly created Station.
 - You can play the station just like any other Internet Radio station.



UPDATING THE INTERNET RADIO STATIONS LIST

Escient makes every attempt to insure that the preloaded Internet Radio Stations are alive and well, but due to the dynamic nature of the Internet and the third parties who actually serve up these radio streams, sometimes you will not be able to play a station. The “Tune Stations” feature allows you to download a list of the most recent Internet Radio stations from Escient.

Note: Tune Stations WILL NOT erase any custom stations you may have added, from your Radio Guide. It WILL replace the Escient supplied stations with a fresh new list.

If you want to replace the current Internet Radio Stations with a new list of stations, follow these steps:

- 1. Make sure you are in the Radio source mode by pressing the RADIO key on the remote.**
- 2. Press the OPTIONS key to display the Options Menu**
- 3. Select the TUNE STATIONS menu item.**
- 4. Read the WARNING screen and select OK to proceed.**
- 5. FireBall will Connect to the Escient server and download the latest Internet Radio Stations.**

When you are finished Tuning the Stations, the Radio Guide is displayed showing the new Escient provided Internet Radio Stations and any user added stations.



EDITING MUSIC INFORMATION

FireBall has access to over 4 million CD titles, but you may still encounter a CD that does not return a custom cover or the correct disc information. You can edit the disc information for any FireBall hardware server based Music Title using the Edit Disc and Edit Tracks screens. You can also Search for Cover art for iPod based Titles.

Editing Disc Info

Follow these steps to edit the disc information for the current Music Title:

1. Highlight the Music Title you want to edit in the Music Guide.
2. Press the **OPTIONS** key on the remote control.
3. Select the **EDIT DISC INFO** menu item to display the Edit Disc Information screen.
4. Using the remote control or wireless keyboard, change the artist name, album title, label, year of release, or genre.
5. Select the **SAVE** button to save your changes and return to the previous screen.

Selecting the **PREVIOUS** or **NEXT** buttons will save any edits you have made to the current disc and display the information for the previous or next disc.





Editing Track Names

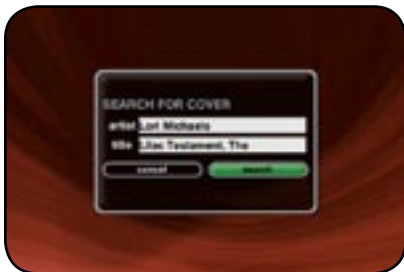
You can also manually edit the Track/Song names for FireBall hardware server based music titles.

Follow these steps to edit the track information for the current Music Title:

1. Highlight the Music Title you want to edit in the Music Guide.
2. Press the OPTIONS key on the remote control.
3. Select the EDIT DISC INFO Info menu item to display the Edit Disc Information screen.
4. Select the EDIT TRACKS button to display the Edit Tracks screen.
5. Using the remote control or wireless keyboard, change the name of each track.
6. Press the SELECT button to advance to the next track.
7. Select the SAVE button to save your changes and return to the previous screen.

ESCIENT®

FireBall™ FP-1 User's Manual



Searching for the Original Cover

Occasionally the wrong cover or the default cover will be displayed for a Music Title. You can manually search for the original cover art by using the “Search for Cover” feature. This is a powerful tool that allows you to search the Escient servers for an exact or partial match using the artist name and/or album name.

Follow these steps to search for a cover:

1. Highlight the Music Title you want to edit in the Music Guide.
2. Press the OPTIONS key on the remote control.
3. Select the EDIT DISC INFO menu item to display the Edit Disc Information screen.
4. Select the SEARCH FOR COVER button to display the Search for Cover screen.
5. The current Artist Name and Album Title are entered as the default search strings. You can change either one of these to modify the search. Note that editing the Artist Name or Title WILL NOT change them in the Music Library. These edits are ONLY used to search for a new cover.
6. Select the SEARCH button to start the search.
7. The Get Music Info screen will be displayed as FireBall attempts to search for the cover using the Artist Name and Title you entered.
8. When the search is complete, you will return to the Edit Disc Information screen where you can verify or edit the results.
9. Select the SAVE button to save your changes and return to the previous screen.

Tips for Searching for Covers

The Escient server uses a fuzzy-match algorithm to locate a matching cover using the Artist Name and Title you enter. There are a few tips to try when searching for covers:

- Remove any punctuation marks from the Artist Name and Title.
- Remove Disc Numbers from the Titles.
- Try different spellings in the Title.
- Try removing part of the Artist Name (if it is more than 2 words).



EDITING RADIO INFORMATION

Similar to editing Music Information, you can also Edit the Radio Information.

Follow these steps to edit the station information for the currently highlighted Internet Radio Station:

1. Make sure you are in the Radio source mode by pressing the RADIO key on the remote.
2. Press the OPTIONS key to display the Options Menu
3. Select the EDIT STATION menu item to display the Edit Station screen.
4. Using the remote or keyboard, edit the information for the new station including: station name, location, URL, the bit rate of the stream, the genre, type of stream (MP3 or WMA), and the number of channels (mono or stereo). The cover art will be set according to which genre you select.
5. Select the SAVE button to save the changes.

ESSENTIAL

FireBall™ FP-1 User's Manual



EDITING PLAYLISTS

You can reorder tracks, change the name, and add or remove tracks from any Playlist you created.

Follow these steps to edit a Playlist:

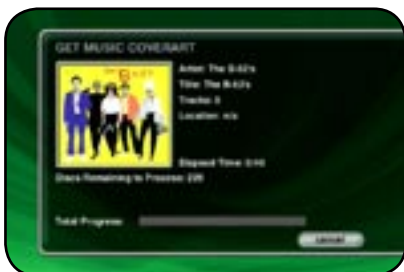
1. Press the **MUSIC** key to make sure you are in the Music source mode.
 2. Highlight the Playlist Name you want to edit. Note: The Playlist group will list all of your Playlists.
 3. Press the **OPTIONS** key to display the Music Options Menu
 4. Select the Playlists/Edit Playlist menu item.
 5. Using the remote control or keyboard, change the name of your Playlist or select the **CONTINUE** button on screen to keep the current name and advance to the Edit Playlist Select Guide.
 6. For each song you want to add to the Playlist, highlight the song name and press the **SELECT** key on the remote. A checkmark appears to the right of each selected song indicating that it will be added to the Playlist.
 7. For each song you want to remove from the Playlist, highlight the song name and press the **SELECT** key on the remote. The checkmark to the right of the song will be removed, indicating that the song should be removed from the Playlist.
 8. When you have added or removed all of the songs you want to include in the playlist, press the **RECORD** button on the remote control to save the Playlist.
- If you remove all songs from a Playlist, the Playlist is automatically deleted.
 - There is a 1000 song maximum for Playlists
 - “This Playlist” in the Group Bar displays which songs are in the current Playlist.
 - To Reorder Tracks in “This Playlist” use the **REW** and **FF** keys to move the highlighted song up or down in the Playlist.



DELETING PLAYLISTS

You may delete entire Playlists from the Music Guide. Follow these steps to permanently delete one or more Playlists from the Music Guide:

1. Press the MUSIC key to make sure you are in the Music source mode.
2. Press the OPTIONS key to display the Options Menu
3. Select the PLAYLISTS/DELETE PLAYLISTS menu item to display the Delete Playlists screen.
4. For each Playlist you want to delete, highlight the Playlist and press the SELECT key on the remote. A checkmark appears to the right of each selected Playlist indicating that it will be deleted. Press the SELECT key again to remove the checkmark.
5. When you have selected all of the Playlists you want to delete, select the DELETE button to permanently remove and delete the checked Playlists.



GET COVER ART

The FP-1 automatically downloads and stores cover art for the music titles on the iPod. If for any reason the cover art is not downloaded then the Get Cover Art function can be used to manually lookup and download all cover art again.

Note: The Music Options Edit Disc function can be used to lookup cover art for individual music titles.



STATUS

The iPod Status screen provides information for the currently docked iPod including how many genres, artists, titles, songs, and playlists are on the iPod.





SELECTING YOUR LANGUAGE

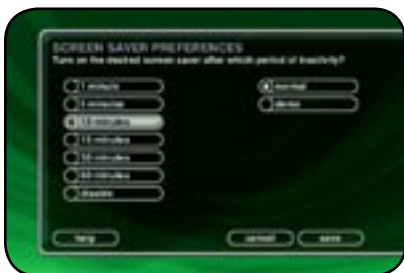
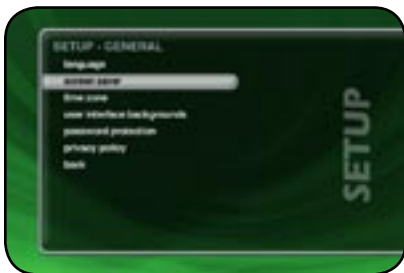
FireBall supports 5 different languages for its on screen menus and text. Follow these steps to set the language of your choice:

Follow these steps to set your preferred language.

1. Press the **SETUP** key on the remote to display the Setup Menu
2. Select the **GENERAL** menu item.
3. Select the **LANGUAGE** menu item.
4. Select the desired language.

ESCIENT[®]

FireBall™ FP-1 User's Manual



SETTING THE SCREEN SAVER PREFERENCES

Screen Savers are provided for each source mode. Screen Savers provide two important functions, to prevent a static image from being displayed on the video output device for extended periods of time and to provide useful information to the user when activated.

Follow these steps to set your screen saver preferences:

1. Press the **SETUP** key on the remote to display the Setup menu.
2. Select the **GENERAL** Menu
3. Select the **SCREEN SAVER** Menu
4. Select your Screen Saver Preferences

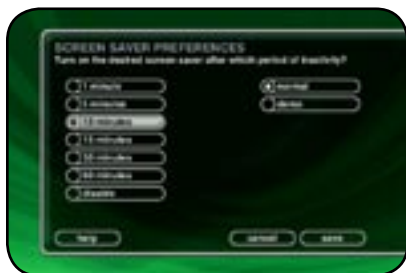
Activation Idle Time

You can specify the amount of idle time that FireBall will wait before activating the screen saver from 1 to 60 minutes.

Warning: Some televisions and plasma monitors are more susceptible to screen burn-in than others, therefore, we recommend using a low activation time (like 1 minute) to reduce the risk of burn-in.

Other Modes

Select either the Normal or Product Demo. The Normal mode displays the current title or station information while the Product Demonstration mode is intended for retail product demos during idle time.



Retail Demo Mode

FireBall has a Retail Demo Mode for use in retail display environments. The Retail Demo Mode (RDM) is a special screen saver that is activated during idle time. The RDM continuously displays key features and benefits of the FireBall product on the attached TV. Pressing any button on the remote will temporarily disable the RDM and allow the user to demo the product. After the specified idle time, the RDM will reactivate as the screensaver.

Follow these steps to enable the Retail Demo Mode in your FireBall display model:

1. Follow the Quick Start instructions to connect and register your demo FireBall.
2. When your FireBall is configured and you see the Music Guide, press the SETUP key on the remote.
3. Select the General menu.
4. Select the Screen Saver menu.
5. Select the Demo Mode option and the number of minutes to wait before displaying the Demo Mode screen saver.
6. Select the Save button.

- The RDM will be activated whenever the FireBall is idle for the specified period of time.
- Do not set the idle time too high as the possibility of screen burn is increased with certain types of displays, particularly "Plasma" type displays.



SETTING YOUR TIME ZONE

Specify which US time zone your FireBall is located in.

Follow these steps to set your Time Zone:

1. Press the **SETUP** key on the remote to display the Setup menu.
2. Select the **GENERAL** Menu
3. Select the **TIME ZONE** Menu
4. Select your Time Zone.

ESCIENT®

FireBall™ FP-1 User's Manual

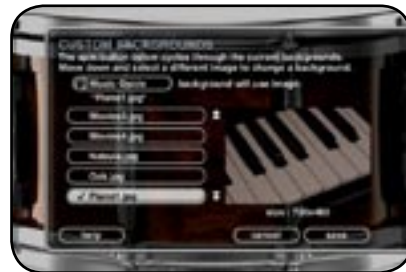


CUSTOMIZABLE USER INTERFACE

In addition to the Escient Classic user interface theme, the FireBall allows you to select a custom theme and select your own background images for each Guide, Player, Options, Setup, and Message screens. You can import your own background images into the Backgrounds shared directory using Windows Networking. Images should be 720x480 and saved in either jpg, gif, or png formats.

Follow these steps to select a custom background on your FireBall:

1. Press the **SETUP** key on the remote.
2. Select the **General** menu.
3. Select the **User Interface Skins** menu.
4. If you selected the **Custom**, you will see the **Custom Backgrounds Select** screen.
 - 4.1. Select the screen you want to set the background for (**Music Guide, Music Player, Music Option, etc...**)
 - 4.2. Scroll down the list and highlight an image. A preview will be displayed to the right of the list.
 - 4.3. Press the **Select** key on the remote to select the desired image.
 - 4.4. Repeat steps 4.1 - 4.3 for each screen you want to customize.
6. Select the **Save** button when you are done to return to the Setup menu.



Note: Some backgrounds look better than others. In general, backgrounds with darker colors and few small details are better.



ENABLING PASSWORD PROTECTION

Optional Password Protection enables you to limit user access to the Setup Menus. This is useful to lock out the ability to change the global user settings and preferences.

Setting a System Password – Follow these steps to setup a new system password:

1. Using the remote control, enter a 4 to 8 digit code into the password field.
2. Press the SELECT key to highlight the VERIFY field.
3. Re-enter the same password for verification.
4. Press the SELECT key to highlight the SAVE button.
5. Press SELECT again to save your password and enable Password Protection on the Setup Menus.

- You must exit Setup and re-enter setup to activate the password protection.
- If a user password is specified, you will be prompted for your password whenever you press the Setup key on the remote.
- If the password entered matches the stored password, full access is granted to the user until the next power off cycle.
- If the password does not match, the user will be asked 2 more times to enter the correct password. If after the third try the password still does not match, the system will not allow the user access to the Setup menus.
- If the user does not specify a System Password, access to the Setup menus will be allowed whenever you press the Setup key.

Removing a System Password – Follow these steps to remove the system password:

1. Press the SETUP key and enter your existing system password.
2. Highlight the CLEAR button on screen and press the SELECT key on your remote.
3. The password and verify fields will be cleared.
4. Highlight the SAVE button and press SELECT.

You will now be able to enter Setup without entering a password.



ETHERNET SETTINGS

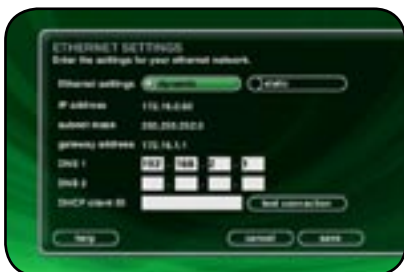
Ethernet is the preferred networking choice which provides you with the best network performance and allows your FireBall to act as a “server” to deliver your music collection throughout your home network using the optional FireBall Music Players.

Ethernet networks require that you configure each device on the network with a valid “address”. These addresses are usually configured automatically by your network hardware. If your PC is setup using Dynamic or “DHCP” addressing, you should most likely use the same for your FireBall.

Connect your FireBall to your Ethernet network using the included Ethernet cable and then follow these steps to specify your Ethernet settings:

- 1. Press the SETUP key on the remote to display the Setup menu.**
- 2. Select the NETWORK Menu**
- 3. Select the ETHERNET SETTINGS Menu**
- 4. Select Dynamic for automatic address configuration or Static if you want to manually enter your TCP/IP address information.**

If you select Static TCP/IP addressing, you will need to obtain a valid IP address, subnet mask, DNS server, and gateway addresses from your network administrator.





SERVER SETTINGS

Your FireBall can act as a “server” delivering audio to optional FireBall “clients” over the network. FireBall’s server also allows you to control it remotely using a web browser on your PC and allows Network File Sharing for backup and import features. The FireBall Name allows you to easily locate and connect to your FireBall by name.

Follow these steps to enter a name for your FireBall:

1. Press the **SETUP** key on the remote to display the Setup menu.
2. Select the **NETWORK** menu.
3. Select the **FIREBALL SERVER SETTINGS** menu.
4. Enter a name for your FireBall using the remote control or wireless keyboard. For example: “Living Room” or “Home Theater” might be a name which helps identify which FireBall you want to connect to.

Follow these steps to enter a password to be used when connecting to your FireBall from a web browser:

1. Press the **SETUP** key on the remote to display the Setup menu.
2. Select the **NETWORK** menu.
3. Select the **FIREBALL SERVER SETTINGS** menu.
4. Enter a password to be used from your PC when connecting from your web browser.

Note: There is no User Name when connecting from a web browser.



FIREBALL MUSIC SHARING

FireBall contains a special music sharing feature that allows the FireBall-PC software and other FireBall Music Servers located on the same network to share their music library into two independent zones. The Music Guide from FireBall-PC or the second FireBall is merged into the Music Guide of the first FireBall to create one seamless Music Guide for browsing and playing all of your music. This effectively can increase the capacity of your FireBall by using FireBall-PC software on your PC or Mac OR by using one FireBall as the master and another one as a second zone or “slave” server.

You can connect any combination of two FireBall AVX, MX, SE, E2, or DVDM Music Servers that have been upgraded to Version 4.0 or later FireBall Features Package.



Follow these steps to connect your FireBall to another FireBall Music Server:

1. Press the **SETUP** key on the remote.
2. Select the **Network** menu.
3. Select the **Remote Server Connection** menu.
4. Select one of the available **FireBall servers** from the server list.
5. Select the **Save** button to save your selection.

When you return to the Music Guide you will have access to all your music from both FireBalls merged into one Music Guide. The “Location” field in the Music Guide will show you where each music title is located.



Repeat the above steps using the other FireBall to access the first FireBall’s music from the second FireBall. You can also select a FireBall-PC “virtual” FireBall if your PC is running the “FireBall-PC” software to integrate and stream more music from your PC/Mac for unlimited storage capacity!



VIDEO FORMAT

Allows you to select 4:3 or 16:9 aspect ratios on your TV screen.

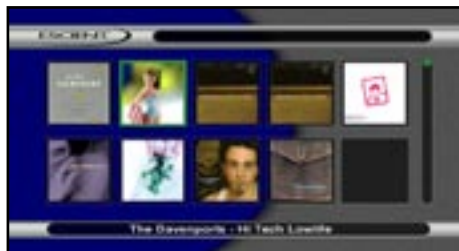
Follow these steps to center the FireBall screen:

1. Press the **SETUP** key on the remote to display the Setup menu.
2. Select the **VIDEO** menu.
3. Select the **VIDEO FORMAT** menu.
4. Using the **Up** and **Down** keys on the remote, select your desired aspect ratio.
5. Press the **SELECT** key on the remote to highlight the **SAVE** button.
6. Press **SELECT** again to save the current desired format.

▼ 4:3 User Interface



▼ 16:9 User Interface





CENTERING THE FIREBALL SCREEN

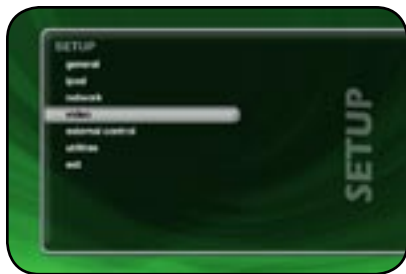
Allows you to center the FireBall user interface horizontally on your TV screen.

Follow these steps to center the FireBall screen:

1. Press the **SETUP** key on the remote to display the Setup menu.
2. Select the **VIDEO** menu.
3. Select the **SCREEN CENTERING** menu.
4. Using the **Left** and **Right** keys on the remote, adjust the screen so that it appears horizontally centered on your TV.
5. Press the **SELECT** key on the remote to highlight the **SAVE** button.
6. Press **SELECT** again to save the current position.

ESSENTIAL[®]

FireBall™ FP-1 User's Manual



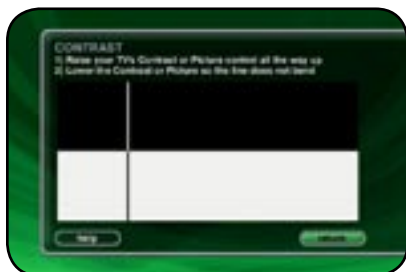
ADJUSTING YOUR TV'S BRIGHTNESS

Follow these steps to adjust the brightness on your TV:

1. Press the **SETUP** key on the remote to display the Setup menu.
2. Select the **VIDEO** menu.
3. Select the **BRIGHTNESS** menu.
4. Turn your TV's brightness control all the way up then lower it to the point where the vertical black bar on the left just disappears. This will get your brightness control as close to the proper setting as possible without the use of special software and hardware.
5. Press **SELECT** to return to the previous menu.

ESSENTIAL®

FireBall™ FP-1 User's Manual



ADJUSTING YOUR TV'S CONTRAST

The Contrast or Picture Adjustment control allows you to optimize the contrast (which is sometimes called Picture) of their TV, using the TV's Contrast or Picture controls. This setting helps reduce video "blooming" and create a clearer, more readable user interface.

Follow these steps to adjust the contrast on your TV:

1. Press the **SETUP** key on the remote to display the Setup menu.
2. Select the **VIDEO** menu.
3. Select the **CONTRAST** menu.
4. Turn your TV's Contrast or Picture control all the way up, then lower it to the point where the vertical line appears straight and does not bend. It may not be possible to make it completely straight on some TV sets. This will get your Contrast control as close to the proper setting as possible without the use of special software and hardware.
5. Press **SELECT** to return to the previous menu

ESSENTIAL[®]

FireBall™ FP-1 User's Manual



ADJUSTING YOUR TV'S SHARPNESS

The Sharpness adjustment allows you to set the Sharpness or Detail control of the TV so that onscreen text is as readable as possible. Proper adjustment of the Sharpness control (sometimes called the Detail control) on your TV, allows you to see video and on screen menus more accurately.

Follow these steps to adjust the sharpness on your TV:

1. Press the **SETUP** key on the remote to display the Setup menu.
2. Select the **VIDEO** menu.
3. Select the **SHARPNESS** menu.
4. Turn your TV's Sharpness or Detail control up and down until the text on the screen is as readable as possible. Be sure to adjust your Brightness and Contrast before adjusting the Sharpness control. This will get your Sharpness control as close to the proper setting as possible without the use of special software and hardware.
5. Press **SELECT** to return to the previous menu



ADJUSTING YOUR TV'S COLOR AND TINT

Color Bars are used to test the TV monitor's ability to reproduce the proper color values.

Follow these steps to adjust the Color and Tint on your TV:

1. Press the **SETUP** key on the remote to display the Setup menu.
2. Select the **VIDEO** menu.
3. Select the **COLOR BARS** menu.
4. Turn your TV's Color and Tint controls up and down until the color bars are at the point where they are not appearing to bleed together and the colors do not appear to be too bright. This will get your Color and Tint controls as close as possible without the use of special software and hardware.
5. Press **SELECT** to return to the previous menu

ESCIEN[®]

FireBall™ FP-1 User's Manual



EXTERNAL CONTROL

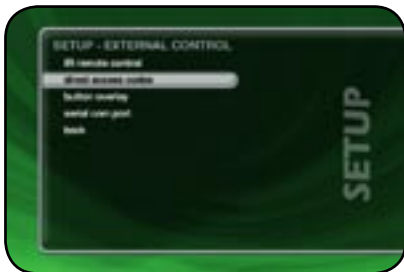
IR REMOTE CONTROL

FireBall is preset from the factory to operate from the FB1 source button, however, the FireBall can be configured to use any one of the four source buttons using the on screen Setup menus. This is useful when there are multiple FireBalls installed at the same location, so all FireBalls don't respond to the same IR commands. Use the following steps to change which source button (**FB1, FB2, FB3, or FB4**) each FireBall will listen for commands from:

Follow these steps to configure your FireBall to be controlled by any of the four IR code banks:

1. Press the Setup key on the remote to display the FireBall setup menu.
2. Select the External Control menu item.
3. Select the IR Remote Control menu item.
4. Select which source button to use to control this FireBall.
5. Press the new source button on your remote to reconfigure the remote and confirm the change by selecting the OK button on screen.

Repeat these steps for each FireBall in your system, selecting a different **FB** button for each.



DIRECT ACCESS CODES

Direct Access Codes are used in conjunction with the MACRO key on the remote control to provide an IR code sequence to access just about any media in your FireBall server. This is useful for programming third-party external control systems and programmable IR remote controls such as the Marantz RC9500.

The Direct Access Codes are available for all music and movie titles, playlists, groups, and radio stations.

Follow these steps to view the direct IR codes for your FireBall content:

1. Press the Setup key on the remote to display the FireBall setup menu.
2. Select the External Control menu item.
3. Select the Direct Access Codes menu item.
4. Select which codes you want to view:
 - a. Music Titles
 - b. Music Discs
 - c. Music Playlists
 - d. Music Groups
 - e. Radio Stations
 - f. Movie Discs
 - g. Movie Groups

Note: You can make a printout of this information by using the FireBall Web Server Interface. Connect to your FireBall's IP address and look under Setup/ Direct Access Codes.



The following table is used to determine the button sequence for direct access code sequences from the Escient IR remote and IR keyboard.

Direct Media Access IR Remote Definitions

Function	Multi-Key Combinations
Direct Play Mode	Macro, 1, [play mode number], Enter
Direct Disc	Macro, 2, [changer number], Macro, [disc number], Enter
Direct Artist-Title	Macro, 3, [artist-title access number], Enter
Direct Group	Macro, 4, [group access number], Enter
Direct Movie Title	Macro, 6, [movie title access number], Enter
Direct Playlist	Macro, 7, [playlist access number], Enter
Direct Track	Macro, 8, [track number], Enter
Direct iRadio Station	Macro, 9, [iRadio access number], Enter

ESCIENT®

FireBall™ FP-1 User's Manual

The following table is used to determine the button sequence for direct access code sequences from the Escient IR remote and IR keyboard.

Direct Media Access IR Remote Definitions

Function	Multi-Key Combinations
Direct Play Mode	Macro, M, [play mode number], Enter
Direct Artist-Title	Macro, A, [artist-title access number], Enter
Direct Movie Title	Macro, V, [movie title access number], Enter
Direct iRadio Station	Macro, R, [iRadio access number], Enter
Direct Disc	Macro, C, [changer number], D, [disc number], Enter
Direct Track	Macro, T, [track number], Enter
Direct Playlist	Macro, P, [playlist access number], Enter
Direct Group	Macro, G, [group access number], Enter

Example 1: Use the keyboard to play disc 14 in changer 1.

Press: MACRO, C, 1, D, 1, 4, ENTER

Example 2: Use the keyboard to play playlist number 5

Press: MACRO, P, 5, ENTER

Example 3: Use the remote to play disc 14 in changer 1.

Press: MACRO, 2, 1, MACRO, 1, 4, ENTER

Example 4: Use the remote to play playlist number 5.

Press: MACRO, 7, 5, ENTER

Example 5: Use the remote to play the movie number 123.

Press: MACRO, 6, 1, 2, 3, ENTER

Note: If you do a lot of editing to your music and movie collection, these numbers may change. If you experience trouble with the Macro key feature, please check that the direct IR numbers are still correct under SETUP.



BUTTON OVERLAY

The Button Overlay feature places button controls onto the FireBall user interface for use with third-party touch panels.

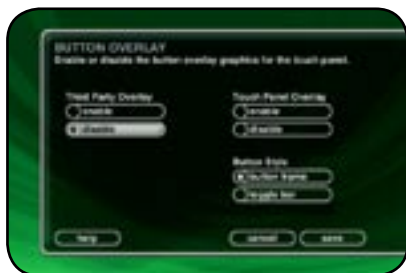
You may choose to manually enable or disable the Third Party Overlay or Escient Touch Panel overlays. There are two types of overlays, the Button Frame and the Toggle Bar. The Button Frame is useful for panels that are capable of displaying video in the overscan area. The Toggle Bar is useful for panels that can not display video in the overscan area. The Toggle Bar should be used for most Third Party touch panel systems.



▼ Button Frame Interface



▼ Toggle Bar Interface





SERIAL COM PORT

The Serial Control COM Port setting is used for two-way external control communications with a third party control system.

If the COM port is not available, you must use the Ethernet based external control for two-way external control communications with a third party control system.

Follow these steps to select which serial port to use for external control:

1. Press the Setup key on the remote to display the FireBall setup menu.
2. Select the External Control menu item.
3. Select the Serial Control COM Port menu item.
4. Select which serial port to use for external control.

CONTROLLING FIREBALL FROM OTHER DEVICES

FireBall provides the user and custom A/V installer with many options for control and integration into any home theater or home automation system using direct IR codes, two-way RS-232 serial control, two-way Ethernet control, and wireless web pad control.

FireBall has built-in support for the following companies' control products:

- **AMX**
- **Crestron**
- **Elan Via**
- **Home Theater Master**
- **Lexicon**
- **Marantz**
- **Net Streams**
- **Opus**
- **Phillips Pronto**
- **RTI**
- **Sonance**
- **Xantech**

Please check the Escient web site or contact your Escient dealer for more information about integrating FireBall into your existing or new home theater or home automation system.

ESCIENT®

FireBall™ FP-1 User's Manual



RESTARTING THE SYSTEM

There are two ways of manually performing a full restart or reboot of the FireBall system, one using the front panel power button and the other using the Restart System menu.

Follow these steps to restart the system using the front panel Power Button:

1. Press and hold the power button for 4 seconds.
2. When the LED on the front panel begins to flash, release the power button.
3. When the LED on the front panel glows solid RED (standby mode), FireBall is ready to use.
4. Press and release the Power button to turn on FireBall.

Follow these steps to restart the system using Utilities menu:

1. Press the SETUP key on the remote to display the Setup menu.
2. Select the UTILITIES menu.
3. Select the RESTART SYSTEM menu.
4. Confirm that you want to restart the system and select the RESTART button.
5. When the LED on the front panel glows solid RED (standby mode), FireBall is ready to use.
6. Press and release the Power button to turn on FireBall.



UPDATING THE SOFTWARE

FireBall will automatically check the Escient server once a week for any FireBall software updates, and automatically install them. You can also manually check for a software update.

Follow these steps to manually update the software:

1. Press the **SETUP** key on the remote to display the Setup menu.
2. Select the **UTILITIES** menu.
3. Select the **UPDATE SOFTWARE** menu.
4. Select the **Check for Update** button.
5. Confirm that you want to update the current software.
6. FireBall will connect to Escient and compare the current software version with the latest release. If a newer version of the FireBall software is available, it will be downloaded and installed.

CONTROLLING FIREBALL FROM A WEB BROWSER

FireBall contains a built-in web server which means you can connect to your FireBall and remotely control it using a standard web browser from a PC, Mac, or PDA over your home network.

SETTING UP THE FIREBALL WEB SERVER

Your FireBall acts as a web server on your network allowing you to connect and control the FireBall using your PC or Mac computer. This web server is automatically configured and started each time the FireBall is plugged in. You connect to the server from your PC or Mac using Internet Explorer or Safari (Mac OSX) using TCP/IP addressing over your home network. You can use a wireless or wired Ethernet network, as long as you have a DHCP router or if you have assigned static IP addresses. Please contact your Escient dealer if you need assistance with setup a home network.

The FireBall Server Name entered on the Server Settings Menu in the SETUP/NETWORK menus is used for the web address to access the FireBall web interface. To access the FireBall web server simply open the web browser on your PC or Mac and enter the FireBall name in the address bar. To access the PDA web interface enter the FireBall name followed by /pda in the address bar. For example, MyFireBall/pda.

USING THE WEB USER INTERFACE

Using the Web User Interface displayed in your Web Browser, you can control almost every aspect of your FireBall. The Web User Interface is setup very similarly to FireBall's own TV user interface allowing access to each source (Music, Movies, Radio) as well as all major features such as Setup, Guide/Player, Options and Edit Screens.

Use your keyboard and mouse to navigate the web interface instead of the IR remote control. Access to all of the major functions is provided by the buttons along the left and right side of the web interface. These buttons duplicate those found on the remote control.



← Fixed 800x600 Web Interface

← Resizable PDA Web Interface

ID3 TAG SUPPORT

All MP3, AAC, and FLAC files should have the proper ID3 tags in each file in order for FireBall to properly add each music file to its internal Library.

The following ID3 tag formats are supported by FireBall:

- ID3v1.0
- ID3v1.1
- ID3v2.2.0
- ID3v2.3.0

Use an ID3 Tag Editor (such as iTunes) to change the ID3 tags to a supported format before importing into FireBall. If your audio files originated from your FireBall, they already have the proper ID tags.

Cover art will be imported into FireBall as long as the cover image is properly embedded into the ID3 tag. Again, use an ID3 Tag Editor on your computer to add cover art images to each audio file prior to importing. Playlists should also be imported directly to the "Import" directory.

ESSENTIAL[®]

FireBall™ FP-1 User's Manual

NETWORKED AUDIO USING FIREBALL MUSIC CLIENTS

SERVERS

A FireBall Server is a Fireball media management system that is capable of “serving” media to other FireBalls over a network. The FireBall is a considered a “server” product. Also, FireBall-PC turns your PC or Mac into a FireBall Server for other FireBall “clients”.

CLIENTS

A FireBall Client is a FireBall that can play media from a FireBall Server over a network. Currently there are several different FireBall products that can play media from FireBall servers:

- FireBall FP-1
- FireBall ZP-1
- FireBall MP-150
- FireBall MP-200
- FireBall DVD-100
- Client-Server networking is limited to the same local subnet. You can not stream over the Internet unless you have a VPN setup between the two FireBalls.
- Only MP3, AAC, and FLAC audio files can be streamed to clients. You can't stream CDs from the internal drive or from external changers.
- Playlists that contain only MP3/AAC/FLAC files will be available on the clients.
- Playlists that contain MP3/AAC/FLAC files and non-streamable tracks will NOT appear on the clients.
- You may have an unlimited number of clients on the network, but you can only stream to 4 clients simultaneously.
- Movies can not be streamed.
- Internet Radio can not be streamed (but it is available on most stand-alone products).

FIREBALL[®]

FireBall™ FP-1 User's Manual

CONFIGURING A FIREBALL SERVER

Every FireBall capable of server functions is automatically enabled to serve MP3, AAC, and FLAC audio whenever it is plugged in and properly configured for your network.

It is recommended that you give each of your FireBall servers a unique name that describes its location using the **SERVER SETTINGS** screen which can be accessed from **Setup/Network /Server Settings**. Names like “LivingRoom”, “HomeTheater”, “MyMusicServer” are all good examples.

Note: Do not use spaces in the FireBall Server Name.

Optionally, you can assign a password for web access to the FireBall. This password is independent from the Parental Controls password and is used to limit access to FireBall’s web server from any standard web browser on your network. If a password is entered here, the user will be asked to enter it when connecting to the FireBall from their PC. This password is provided to protect access to your FireBall through the standard HTTP port 80 on your subnet.

CONFIGURING A FIREBALL CLIENT

Networking

Each FireBall client must be on the same network as the server. This document will assume that you have properly connected your FireBall client to the same network as your FireBall server. Please refer to the HomeNetworkingPrimer support document on the Escent web site for more information about home networking.

Server Selection

FireBall clients will automatically select the first server it sees on the network and connect to it upon startup.

If you have more than one server on your network, you can manually select a different server using the **Server Connection** screen which can be accessed from **Setup/Internet Configuration/Server Connection**.

The Server Connection screen displays a list of FireBall Servers found on your network by their default or user defined “FireBall Name”.

Once you select a server and save your selection, press MUSIC to view the Music Guide on the client. In a few moments, the Music Guide will display the contents of the FireBall server. You can then select and play anything from the Music Guide just as you would from a single FireBall.

ESCIENT TECHNICAL SUPPORT

Contact your dealer or Escient's Customer Support group.

Hours: Monday - Friday 9:00am - 7pm EST

Phone: 800-372-4368 Press "2" for Sales, or "3" for Support

Fax: 317-616-6790

Internet: www.escient.com

Email: support@escient.com

Please have the following information ready for the Escient Customer Support technician:

- Product Serial Number
- Model Number
- Date of Registration or Purchase
- Place of Purchase

ESCIENT®

FireBall™ FP-1 User's Manual

TROUBLESHOOTING

NETWORK PROBLEMS

If you experience problems registering a FireBall or connecting to the Internet to lookup disc information, try these possible fixes before calling Escient Tech Support:

- Make sure that your FireBall is properly connected to your home network and that all cables are in working order.
- FireBall communicates using TCP/IP and UDP over Ethernet networks using ports 80, 443, and 1755. If you have a router installed on your network, make sure that these ports are open for TCP and UDP.
- If Dynamic TCP/IP addressing fails, check your router to make sure that it is configured to assign dynamic IP addresses via DHCP and try rebooting your router.
- If DHCP addressing still isn't working, try using static IP addresses. The Internet Assigned Numbers Authority (IANA) has reserved the following three blocks of the IP address space for private networks: 10.0.0.0 - 10.255.255.255, 172.16.0.0 - 172.31.255.255, and 192.168.0.0 - 192.168.255.255. Note that the first block is nothing but a single class A network number, while the second block is a set of 16 contiguous class B network numbers, and the third block is a set of 255 contiguous class C network numbers. The complete RFC 1918 can be found via FTP on <http://nic.ddn.mil>
- Crestron, AMX, or other third party controllers capable of controlling the FireBall over Ethernet use port 251. Make sure your router has port 251 open if you plan on using two-way control over Ethernet.

SOFTWARE UPDATE PROBLEMS

Manual Software Update Checks

Software Updates are automatically checked once a week starting on the day of the week your FireBall was first registered. You can manually check for a software update by accessing the Software Update menu found under the Setup/Utilities Menu.

ESCIENT®

FireBall™ FP-1 User's Manual

ADDITIONAL INFORMATION

SPECIFICATIONS

Specifications are subject to change without notice. Please check the Escent web site for any changes to the specifications.

Video Specifications

- NTSC
- 10 bit Video DACs
- Frequency Response:
- Composite: -2 dB @ 5MHz
- S-Video: -2 dB @ 5MHz
- SNR: 50 dB
- Crosstalk: 50 dB
- Input Impedance: 75Ohm
- Output Impedance: 75Ohm

Audio Specifications

- Frequency Response: 2 – 20,000 Hz, ± 1 dB
- THD+N (playback) < -80 dB FS A (< 0.01%)
- A_D-DSP-D-A Dynamic Range: > 96 dB FS A @ 1kHz
- Channel Separation: >95 dB
- Full Scale Line Output: > 2 Vrms, 50 k ohms
- S/PDIF Output: 0.4Vpp to 0.6Vpp, <0.05Vdc (75ohm terminated)
- Power Requirements: AC 90-132 VAC, 50-60 Hz
- Power Consumption: < 60 watts

Physical Specifications

Width: ~ 17 3/8"

Height: ~ 4 5/8" w/ feet; ~ 4" w/o feet

Depth: ~ 11 7/8"; Installed 14 3/8"

3rd Party Certifications

- FCC: US Part 15, Class B
- NTSC Video Output: NTSC RS-170A
- cETL Listing
- Conforms to: UL STD 6500-2000
- Certified to: CAN/CSA STD E60065-00
- CE

FCC Part 15, Subpart B

Class B

Note: This equipment has been tested and found to comply with the limits for a Class B digital device, pursuant to Part 15 of the FCC Rules. These limits are designed to provide reasonable protection against harmful interference in a residential installation. This equipment generates, uses, and can radiate radio frequency energy and, if not installed and used in accordance with the instructions, may cause harmful interference to radio communications. However, there is no guarantee that interference will not occur in a particular installation. If this equipment does cause harmful interference to radio or television reception, which can be determined by turning the equipment off and on, the user is encouraged to try to correct the interference by one or more of the following measures:

- Reorient or relocate the receiving antenna.
- Increase the separation between the equipment and receiver.
- Connect the equipment into an outlet on a circuit different from that to which the receiver is connected.
- Consult the dealer or an experienced radio TV technician for help.
- Shielded cables must be used with this unit to ensure compliance with the Class B FCC limits.

ESCENT®

FireBall™ FP-1 User's Manual



GRACENOTE® END-USER LICENSE AGREEMENT USE OF THIS PRODUCT IMPLIES ACCEPTANCE OF THE TERMS BELOW.

This product contains technology and data from Gracenote of Emeryville, California (“Gracenote”). The technology from Gracenote (the “Gracenote Embedded Software”) enables this product to do disc identification and obtain music-related information, including name, artist, track, and title information (“Gracenote Data”), which is included on the Gracenote Database (the “Gracenote Database”).

You agree that you will use Gracenote Data, the Gracenote Database, and Embedded Software for your own personal non-commercial use only. You agree that you will access Gracenote Data only by means of the standard end user functions and features of this product. You agree not to assign, copy, transfer or transmit the Embedded Software or any Gracenote Data to any third party. **YOU AGREE NOT TO USE OR EXPLOIT GRACENOTE DATA, THE GRACENOTE DATABASE, OR GRACENOTE COMPONENT, EXCEPT AS EXPRESSLY PERMITTED HEREIN.**

You agree that your non-exclusive license to use the Gracenote Data, the Gracenote Database, and Embedded Software will terminate if you violate these restrictions. If your license terminates, you agree to cease any and all use of the Gracenote Data, the Gracenote Database, and Gracenote Embedded Software. Gracenote reserves all rights in the Gracenote Data, Gracenote Database, and Gracenote Embedded Software, including all ownership rights. You agree that Gracenote may enforce its rights under this Agreement against you directly in its own name.

The Embedded Software and each item of Gracenote Data are licensed to you “AS IS.” Gracenote makes no representations or warranties, express or implied, regarding the accuracy of any Gracenote Data. Gracenote reserves the right to delete data or to change data categories in any Data updates and for any cause that Gracenote deems sufficient. No warranty is made that the Embedded Software is error-free or that functioning of the Embedded Software will be uninterrupted. Gracenote is not obligated to provide you with any new enhanced or additional data types or categories that Gracenote may choose to provide in the future.

GRACENOTE DISCLAIMS ALL WARRANTIES EXPRESS OR IMPLIED, INCLUDING, BUT NOT LIMITED TO, IMPLIED WARRANTIES OF MERCHANTABILITY, FITNESS FOR A PARTICULAR PURPOSE, TITLE, AND NON-INFRINGEMENT. GRACENOTE DOES NOT WARRANT THE RESULTS THAT WILL BE OBTAINED BY YOUR USE OF THE GRACENOTE COMPONENT OR ANY GRACENOTE SERVER. IN NO CASE WILL GRACENOTE BE LIABLE FOR ANY CONSEQUENTIAL OR INCIDENTAL DAMAGES OR FOR ANY LOST PROFITS OR LOST REVENUES.

Free Manuals Download Website

<http://myh66.com>

<http://usermanuals.us>

<http://www.somanuals.com>

<http://www.4manuals.cc>

<http://www.manual-lib.com>

<http://www.404manual.com>

<http://www.luxmanual.com>

<http://aubethermostatmanual.com>

Golf course search by state

<http://golfingnear.com>

Email search by domain

<http://emailbydomain.com>

Auto manuals search

<http://auto.somanuals.com>

TV manuals search

<http://tv.somanuals.com>